

A photograph of two bulls in a field. In the foreground, a black Angus yearling bull stands in profile, facing left. Behind it, a larger Simmental bull stands facing forward. The ground is covered in straw, and the background shows a grassy field under a clear sky.

Christensen

**SIMMENTAL ONLINE
ONLY**

54th Annual Bull Sale

April 27th, 2025 - Bidding starts at 6pm on DV Auction
75 powerful Simmental / Sim Angus™ / Angus yearling bulls



3 loads of Christensen Simmental steers headed to Kimball Livestock Exchange

[ONLINE ONLY]

54th Offering 75 SIMMENTAL, SIMANGUS™ & ANGUS BULLS

ANNUAL PRODUCTION SALE

SUNDAY, APRIL 27, 2025

Christensen Simmental

Welcome to our online-only production sale!

Dear valued customers and friends, we would like to invite you to our 54th annual bull sale!

We are very excited about the bulls this year. There are several top notch bulls in the line up. I am not very good at blowing our own horn about the quality of these cattle, but the quality is here.

In our line up they are top bulls ALL the way from top to bottom. These bulls will produce calves that will top all markets from finished cattle down to baby calves. They can go from choice and prime to AB and raise premiums.

We decided to go back to the online sale. We really like the online way of marketing. The best part of it is you first choice bull is always there. You don't have to say I should have bought that one that sold earlier.

We invite you to come look at the bulls anytime at your convenience. You can see how they walk in their own environment. The bulls are located 7 WEST and 7 NORTH of Wessington Springs SD. Videos are available at DVA to view any time.

We are going to have some food and drinks around Saturday afternoon and Sunday so come on over and take a look.

A special note of thanks to our crew-Clayton and Sam. They are dedicated workers and make things happen!!

Please feel free to ask any questions!

Chris and Sheila Christensen

Amy - Alex

Collin, Kaci & Hallie Anson and Garrett Anson

View Bulls at 37457 221st; Wessington Springs, SD 57382
[SEE DVAUCTION.COM FOR CLOSING TIME]

CONTACT INFORMATION

Amy.....605.350.0103
Alex.....605.350.0200
Chris.....605.354.4236
Collin.....605.461.8796

VIEW THE BULLS AT THE RANCH!

7 Miles North, 7 Miles West of Wessington Springs, SD

Online viewing and bidding
will begin April 24 on DV AUCTION
Bidding ends April 27 at 6PM

Terms/Conditions

Cattle will be sold under the terms and conditions of the American Simmental Association. Registration papers will be issued for registered animals, if buyer so desires. EPDs may change from the time the catalog is printed to the time registration papers are issued.
RETAINING 1/3 SEMEN INTEREST IN ALL THE BULLS

Breeding Guarantee

All bulls selling for \$4000 or more are guaranteed for the first breeding season (90 days post turnout) We would like to notified immediately if there is a problem. I a replacement bull is available, he will be furnished; if not credit will be given on the next sale.

Terms of the Sale/Payment

Please make arrangements with Christensens immediately following the sale. No animal will be loaded out without payment and shipping arrangements.

DVAuction

Broadcasting Real-Time Auctions

OUR SALE WILL BE BROADCAST ON DVAUCTION AS AN ONLINE ONLY AUCTION!

To get in on the action, follow these simple instructions:

1. Create an account at www.dvauction.com under the "registration" tab.
2. Apply for bidding approval by clicking on the "details" tab at least 24 hours prior to the auction. You will be notified once you are approved.
3. Find the "Christensen Simmental" [Online Only] 54th Annual Simmental Bull Sale" to view the entire sale offering including videos.
4. Begin placing your bids on Wednesday, April 24, 2025, bids close April 27.
5. Proxy Bidding – if you can't make time to keep an eye on the sale or be available for the close out, register a proxy bid and let the DVAuction system represent your bid while you are away. Look for the "Proxy Bid" tab on the auction listing and fill in your maximum bids. DVAuction will handle the rest in strict confidence.
6. All lots will close at the same time. Bidding will be extended by 5 minutes if a bid is placed on any lot within 5 minutes of the closing time.
7. Have some fun and don't hesitate to call Amy, Alex or Chris with any questions you have about the offering.

General Questions / Bidder Approval (402)316-5460 | DVA@dvauction.com

Technical Support (402)316-5460 // support@dvauction.com // www.dvauction.com

ADVANTAGES FOR BIDDING ONLINE FOR THE BUYER

1. Your first choice is always there
2. You can look at the bulls anytime
3. You can bid from anywhere and don't have to interrupt your day
4. Bids are controlled by you and not the auctioneer
5. You can look at your leisure at the bulls in their normal environment



**COLIN & KACI ARE PARENTS TO THIS
BEAUTIFUL LITTLE LADY- MISS HALLIE RAY ANSON
OCT. 8, 2024**

SCHOOLEY KROWN 28K SIRE TO LOTS 1-7



Lot 1



Lot 2

Lot 1

TAG: M041 | 11/16 SM 1/4 AN 1/16 AR | BSTAR
ASA#: 4385352 | DOB: 4/7/24

PGS: KBHR REVOLUTION H071

SIRE: SCHOOLEY KROWN 28K

PGD: SCHOOLEY MISS 3000A 823F

DAM: H878

MGS: CCR COWBOY CUT 5048Z

MGD: W972

ACT BW	ADJ WW	ADJ YW	YRL SC	FRAME	ADG
86	742	1386	40	6	5.41

CE	BW	WW	YW	MCE	MM	MWW	API	TI
13.1	1.3	89.5	137.6	9.3	22.9	67.8	154.1	93.8

Big Growth bull. Popular pedigree with KROWN and COWBOY CUT. High weaning, big gain, good looking all in one. Top 15% of marbling for better carcass premiums.

Lot 2

TAG: 951 | 3/4 SM X 1/4 ANGUS | BLACK
ASA#: COMMERCIAL | DOB: 4/3/24

PGS: KBHR REVOLUTION H071

SIRE: SCHOOLEY KROWN 28K

PGD: SCHOOLEY MISS 3000A 823F

DAM:

MGS: CAFFEE RESOURCE

MGD:

ACT BW	ADJ WW	ADJ YW	YRL SC	FRAME	ADG
83	735	1263	39	5.5	4.77

CE	BW	WW	YW	MCE	MM	MWW	API	TI

This bull comes from one of the top 10 cows in the herd. He punches all the buttons for anything you want to do with him. Great attitude and can't say enough good things

Lot 3

TAG: M062 | 5/8 SM 3/8 AN | BLK STAR
ASA#: 4385376 | DOB: 4/11/24

PGS: KBHR REVOLUTION H071

SIRE: SCHOOLEY KROWN 28K

PGD: SCHOOLEY MISS 3000A 823F

DAM: J009

MGs: OMF EPIC E27

MGD: G665

ACT BW	ADJ WW	ADJ YW	YRL SC	FRAME	ADG
78	626	1101	37	4.7	3.9

CE	BW	WW	YW	MCE	MM	MWW	API	TI
14.4	0	86.4	134.1	8.7	23.1	66.3	150.4	91.6

Moderate frame, should make easy fleshing daughters with excellent udders. High API and TI.

Lot 4

TAG: M079 | 3/8 SM 1/2 AN 1/8 CS | BLK STAR
ASA#: 4385394 | DOB: 4/24/24

PGS: KBHR REVOLUTION H071

SIRE: SCHOOLEY KROWN 28K

PGD: SCHOOLEY MISS 3000A 823F

DAM: J136

MGs:

MGD: W651

ACT BW	ADJ WW	ADJ YW	YRL SC	FRAME	ADG
95	746	1302	39	6.8	5.1

CE	BW	WW	YW	MCE	MM	MWW	API	TI
10.8	2.9	91.37	147.4	704	25.6	71.4	139	90.1

Big cow bull here with blaze face. Big weaning, high gain. Top 25% marbling and TI.

Lot 5

TAG: 626RD | 1/2 SM X 1/2 ANGUS | BLACK
ASA#: COMMERCIAL | DOB: 4/18/24

PGS: KBHR REVOLUTION H071

SIRE: SCHOOLEY KROWN 28K

PGD: SCHOOLEY MISS 3000A 823F

DAM:

MGs: EMBLAZON 5084

MGD:

ACT BW	ADJ WW	ADJ YW	YRL SC	FRAME	ADG
89	751	1262	34	5.3	3.78

CE	BW	WW	YW	MCE	MM	MWW	API	TI

The deepest bodied bull in the sale. Massive is the word I would use to describe him



Lot 5

Lot 6

TAG: 7037 | 3/4 SM X 1/4 ANGUS | BLACK
ASA#: COMMERCIAL | DOB: 4/9/24

PGS: KBHR REVOLUTION H071

SIRE: SCHOOLEY KROWN 28K

PGD: SCHOOLEY MISS 3000A 823F

DAM:

MGs: RANCHER 7037

MGD:

ACT BW	ADJ WW	ADJ YW	YRL SC	FRAME	ADG
87	688	1155	39	5.1	3.25

CE	BW	WW	YW	MCE	MM	MWW	API	TI

Another one of those good Krown bulls. Comes from a really good Rancher daughter

Lot 7

TAG: 3157 | 1/2 SM X 1/2 ANGUS | BLACK
ASA#: COMMERCIAL | DOB: 4/16/24

PGS: KBHR REVOLUTION H071

SIRE: SCHOOLEY KROWN 28K

PGD: SCHOOLEY MISS 3000A 823F

DAM:

MGs: SITZ DASH

MGD:

ACT BW	ADJ WW	ADJ YW	YRL SC	FRAME	ADG
86	665	1211	38	5.2	4.64

CE	BW	WW	YW	MCE	MM	MWW	API	TI

Super long and came out of a 12 year old cow

IR/JLN BOOMER J425

SIRE TO LOTS 8-12



Lot 9

Lot 8 TAG: M032 | 1/2 SM 3/8 AN 1/8 CS | BLACK
 ASA#: 4385395 | DOB: 4/3/24
 PGS: HOOK'S EAGLE 6E
 SIRE: IR/JLN BOOMER J425 PGD: KBHR IR/JLN ASTORIA G119
 DAM: G650 MGS:
 MGD: UC CROCUS U181 BLK

ACT BW	ADJ WW	ADJ YW	YRL SC	FRAME	ADG
90	749	1343	36.5	6.5	4.53

CE	BW	WW	YW	MCE	MM	MWW	API	TI
11.8	0.4	80.9	127.1	6	24	64.5	143.3	87.4

Ranks high for carcass and performance. He will make great feeder cattle that gain fast and hang a superior carcass.

Lot 9 TAG: M036 | 1/2 SM 3/8 CS 1/8 AN | BLACK
 ASA#: 4385427 | DOB: 4/5/24
 PGS: HOOK'S EAGLE 6E
 SIRE: IR/JLN BOOMER J425 PGD: KBHR IR/JLN ASTORIA G119
 DAM: H811 MGS: SHSF FREIGHTLINER D10
 MGD: UC CROCUS A536 BLK

ACT BW	ADJ WW	ADJ YW	YRL SC	FRAME	ADG
80	726	1175	39	6.1	3.66

CE	BW	WW	YW	MCE	MM	MWW	API	TI
14.8	-1	81.4	129.8	7.2	22.1	62.8	145.9	87.4

Balanced traits across the EPD profile. Big rib eye and high APT and TI.



Lot 10

Lot 10 TAG: X45 | 5/8 SM X 3/8 ANGUS | BLACK
 ASA#: COMMERCIAL | DOB: 4/14/24
 PGS: HOOK'S EAGLE 6E
 SIRE: IR/JLN BOOMER J425 PGD: KBHR IR/JLN ASTORIA G119
 DAM: MGS: SAV THUNDERBIRD
 MGD:

ACT BW	ADJ WW	ADJ YW	YRL SC	FRAME	ADG
89	706	1195	35	6.2	4.58

CE	BW	WW	YW	MCE	MM	MWW	API	TI
----	----	----	----	-----	----	-----	-----	----

Excellent is the term I would use here! Great for cows or 2nd calvers

Lot 11

TAG: 6199GR | 3/4 SM X 1/4 ANGUS | BLACK
ASA#: COMMERCIAL | DOB: 4/10/24

PGS: HOOK'S EAGLE 6E

SIRE: IR/JLN BOOMER J425

PGD: KBHR IR/JLN ASTORIA G119

DAM:

MGS: GIBBS CRIMSON TIDE

MGD:

ACT BW	ADJ WW	ADJ YW	YRL SC	FRAME	ADG			
79	663	1179	41	6.6	4.25			
CE	BW	WW	YW	MCE	MM	MWW	API	TI

These Boomers have been coming on really strong

Lot 12

TAG: M075 | PB SM | BLACK
ASA#: 4385382 | DOB: 4/21/24

PGS: HOOK'S EAGLE 6E

SIRE: IR/JLN BOOMER J425

PGD: KBHR IR/JLN ASTORIA G119

DAM: A664

MGS: JS SURE BET 4T

MGD: UC CROCUS R133 BLACK

ACT BW	ADJ WW	ADJ YW	YRL SC	FRAME	ADG			
91	670	1133	41	5.8	3.19			
CE	BW	WW	YW	MCE	MM	MWW	API	TI

11.7 1.1 76.8 117.6 7.7 26.9 65.4 143.1 83.2

Comes from the old A664 cow. She is sired by JS SURE BET, She's 12 years old this Spring and never missed. She is still very sound in feet, legs, eyes and udder. She is big bodies easy fleshing with a good hair coat.



Lot 13

TAG: M047 | 1/4 SM 3/8 AN 3/8 CS | BLACK
ASA#: 4385422 | DOB: 4/8/24

PGS: YON FUU FORCE C398

SIRE: GIBBS 9121G KENWORTH

PGD: GIBB'S 0532X SM STAR P342

DAM: H917

MGS: 3C BURT 8552F B

MGD: UC CROCUS A569 BLK

ACT BW	ADJ WW	ADJ YW	YRL SC	FRAME	ADG			
78	689	1143	41	5.6	3.89			
CE	BW	WW	YW	MCE	MM	MWW	API	TI

15.3 -2 73.8 118.8 10.2 29.8 67.2 146.9 84

Lots of calving ease -could work on heifers. High maternal traits should make excellent females.

Lot 14

TAG: 3097 | 1/2 SM X 1/2 ANGUS | BLACK
ASA#: COMMERCIAL | DOB: 4/13/24

PGS: YON FUU FORCE C398

SIRE: GIBBS 9121G KENWORTH

PGD: GIBB'S 0532X SM STAR P342

DAM:

MGS: EMBLAZON 702

MGD:

ACT BW	ADJ WW	ADJ YW	YRL SC	FRAME	ADG			
84	681	1209	39	6.7	4.06			
CE	BW	WW	YW	MCE	MM	MWW	API	TI

Long bodied bull out of a 10 year old cow. Really grew when he hit the bunk. Kenworth Long.



Lot 15



Lot 16

Lot **15** TAG: 203 | ANGUS | BLACK
 ASA#: COMMERCIAL | DOB: 3/5/24
 PGS: BASIN PAYWEIGHT 1682
 SIRE: DEER VALLEY GROWTH FUND PGD: DEER VALLEY RITA 36113
 DAM: MGS: CONEALY COMRADE
 MGD:

ACT BW	ADJ WW	ADJ YW	YRL SC	FRAME	ADG			
70	658	1133	37	5.2	3.9			
CE	BW	WW	YW	MCE	MM	MWW	API	TI

Heifer Bull! This bull is extra special to us. His mother was the top bred heifer last year. You will not be disappointed.

Lot **16** TAG: M004 | 15/16 AN 1/16 CS | BLACK
 ASA#: 4385361 | DOB: 3/5/24
 PGS: BASIN PAYWEIGHT 1682
 SIRE: DEER VALLEY GROWTH FUND PGD: DEER VALLEY RITA 36113
 DAM: K256 MGS: S A V FINAL ANSWER 0035
 MGD: UC CROCUS Y004 BLK

ACT BW	ADJ WW	ADJ YW	YRL SC	FRAME	ADG			
80	698	1289	35	5.2	4.3			
CE	BW	WW	YW	MCE	MM	MWW	API	TI

14 -0.8 85.7 141.4 9.1 25.2 67.9 161.7 104
 Lots of Angus here. Moderate frame, good rate of gain. Goes back to FINAL ANSWER on dam's side.

Lot 17 TAG: 236 | ANGUS | BLACK
 ASA#: COMMERCIAL | DOB: 3/12/24
 PGS: BASIN PAYWEIGHT 1682
 SIRE: DEER VALLEY GROWTH FUND
 PGD: DEER VALLEY RITA 36113
 MGS: REFLECTION 045
 DAM:
 MGD:

ACT BW	ADJ WW	ADJ YW	YRL SC	FRAME	ADG			
83	648	1204	39	4.7	4.4			
CE	BW	WW	YW	MCE	MM	MWW	API	TI

Heifer Bull with a great gain



Lot 17

Lot 18 TAG: 2013 | 1/2 SM X 1/2 ANGUS | BLACK
 ASA#: COMMERCIAL | DOB: 3/23/24
 PGS: BASIN PAYWEIGHT 1682
 SIRE: DEER VALLEY GROWTH FUND
 PGD: DEER VALLEY RITA 36113
 MGS: RANCHER 16R
 DAM:
 MGD:

ACT BW	ADJ WW	ADJ YW	YRL SC	FRAME	ADG			
78	732	1142	39	4.9	2.92			
CE	BW	WW	YW	MCE	MM	MWW	API	TI

This is a sweet Growth Fund calf! If you need growth and one with a powerful top and deep side this is him. Easy calving

Lot 20 TAG: 292GR | 1/2 SM X 1/2 ANGUS | BLACK
 ASA#: COMMERCIAL | DOB: 3/18/24
 PGS: BASIN PAYWEIGHT 1682
 SIRE: DEER VALLEY GROWTH FUND
 PGD: DEER VALLEY RITA 36113
 MGS: EPIC
 DAM:
 MGD:

ACT BW	ADJ WW	ADJ YW	YRL SC	FRAME	ADG			
63	591	1146	36	4.8	4.92			
CE	BW	WW	YW	MCE	MM	MWW	API	TI

Huge gain. Comes out of a heifer



Lot 20

Lot 21 TAG: 281 | 1/4 SM X 3/4 ANGUS | BLACK
 ASA#: COMMERCIAL | DOB: 3/20/24
 PGS: BASIN PAYWEIGHT 1682
 SIRE: DEER VALLEY GROWTH FUND
 PGD: DEER VALLEY RITA 36113
 MGS: 6400X
 DAM:
 MGD:

ACT BW	ADJ WW	ADJ YW	YRL SC	FRAME	ADG			
77	625	1161	42	4.9	4.58			
CE	BW	WW	YW	MCE	MM	MWW	API	TI

Growth fund has been a game changer for this place. It is calving season and we have several Growth Fund daughters. What beautiful females they are. Perfect teat size and ample supply of milk. Very attractive.



Lot 21

Lot 22 TAG: 219GR | 1/4 SM X 3/4 ANGUS | BLACK
 ASA#: COMMERCIAL | DOB: 3/6/24
 PGS: BASIN PAYWEIGHT 1682
 SIRE: DEER VALLEY GROWTH FUND
 PGD: DEER VALLEY RITA 36113
 DAM: MGS: ROBUST
 MGD:

ACT BW	ADJ WW	ADJ YW	YRL SC	FRAME	ADG			
76	592	1201	40	5.7	4.56			
CE	BW	WW	YW	MCE	MM	MWW	API	TI

Heifer Bull! Took off when he hit the bunk. He is out of a first calf heifer.

Lot 23 TAG: 206 | 1/4 SM X 3/4 ANGUS | BLACK
 ASA#: COMMERCIAL | DOB: 3/7/24
 PGS: BASIN PAYWEIGHT 1682
 SIRE: DEER VALLEY GROWTH FUND
 PGD: DEER VALLEY RITA 36113
 DAM: MGS: 6400X
 MGD:

ACT BW	ADJ WW	ADJ YW	YRL SC	FRAME	ADG			
73	582	1144	39	4.7	4.34			
CE	BW	WW	YW	MCE	MM	MWW	API	TI

Heifer Bull with big gain

Lot 24 TAG: 2022 | 1/2 SM X 1/2 ANGUS | BLACK
 ASA#: COMMERCIAL | DOB: 3/26/24
 PGS: BASIN PAYWEIGHT 1682
 SIRE: DEER VALLEY GROWTH FUND
 PGD: DEER VALLEY RITA 36113
 DAM: MGS: EPIC 810
 MGD:

ACT BW	ADJ WW	ADJ YW	YRL SC	FRAME	ADG			
80	628	1193	40	5.5	4.5			
CE	BW	WW	YW	MCE	MM	MWW	API	TI

Put these Growth Fund together and make a matching set of feeder steers. 1200 pounds at a year.

Lot 25 TAG: 224 | ANGUS | BLACK
 ASA#: COMMERCIAL | DOB: 3/11/24
 PGS: BASIN PAYWEIGHT 1682
 SIRE: DEER VALLEY GROWTH FUND
 PGD: DEER VALLEY RITA 36113
 DAM: MGS: EMBLAZON 5048
 MGD:

ACT BW	ADJ WW	ADJ YW	YRL SC	FRAME	ADG			
63	567	1098	38	4.8	4.41			
CE	BW	WW	YW	MCE	MM	MWW	API	TI

Heifer Bull!



BCLR MANIFESTO - GRAND SIRE TO LOTS 26-28

Lot 26 TAG: 002 | 1/2 SM X 1/2 ANGUS | BLACK
 ASA#: COMMERCIAL | DOB: 4/11/24
 PGS:
 SIRE: MANIFESTO 7054
 PGD:
 DAM: MGS: CONEALY COMRADE
 MGD:

ACT BW	ADJ WW	ADJ YW	YRL SC	FRAME	ADG			
88	733	1196	40	5.7	4.16			
CE	BW	WW	YW	MCE	MM	MWW	API	TI

I really like this bulls dam. She is very attractive and he's got some great growth numbers

Lot 27 TAG: 0190 | 1/2 SM X 1/2 ANGUS | BLACK
 ASA#: COMMERCIAL | DOB: 4/17/24
 PGS:
 SIRE: MANIFESTO 7054
 PGD:
 DAM: MGS: REMEDY 410
 MGD:

ACT BW	ADJ WW	ADJ YW	YRL SC	FRAME	ADG			
85	742	1237	43	6.7	4			
CE	BW	WW	YW	MCE	MM	MWW	API	TI

Go ahead and but this one is you need power and depth of body

Lot 28 TAG: 865 | 5/8 SM X 3/8 ANGUS | BLACK
 ASA#: COMMERCIAL | DOB: 5/9/24
 PGS:
 SIRE: MANIFESTO 7054
 PGD:
 DAM: MGS: MOGK SURE SHOT
 MGD:

ACT BW	ADJ WW	ADJ YW	YRL SC	FRAME	ADG			
87	749	1250	31	6.5	3.34			
CE	BW	WW	YW	MCE	MM	MWW	API	TI

Look at the birth to weaning numbers on him! WOW



LOT 29

KLER PROMOTER G15 - SIRE TO LOTS 29 & 30

Lot 29 TAG: 7148 | 3/4 SM X 1/4 ANGUS | BLK Z
 ASA#: COMMERCIAL | DOB: 4/17/24
 PGS: Rubys Turnpike 771E
 SIRE: KLER PROMOTER G15
 PGD: GW Miss GPRD 028X
 DAM: MGS: RANCHER 7148
 MGD:

ACT BW	ADJ WW	ADJ YW	YRL SC	FRAME	ADG			
86	744	1228	39	5.7	3.43			
CE	BW	WW	YW	MCE	MM	MWW	API	TI

Where are you going to find a zipper faced bull with this much body and a great attitude

Lot 30 TAG: 6108 | 3/4 SM X 1/4 ANGUS | BLACK
 ASA#: COMMERCIAL | DOB: 4/10/24
 PGS: Rubys Turnpike 771E
 SIRE: KLER PROMOTER G15
 PGD: GW Miss GPRD 028X
 DAM: MGS: RANCHER 6048
 MGD:

ACT BW	ADJ WW	ADJ YW	YRL SC	FRAME	ADG			
88	696	1205	39.5	6	3.3			
CE	BW	WW	YW	MCE	MM	MWW	API	TI

Scurred but Promoter has some big growth numbers

Lot 31 TAG: 6177 | 3/4 SM X 1/4 ANGUS | BLACK
 ASA#: COMMERCIAL | DOB: 4/4/24
 PGS: J BAR J NIGHTRIDE 225Z
 SIRE: GW TRIPLE CROWN 018C
 PGD: GW MISS GPRD 359A
 DAM: MGS: 3156 RANCHER
 MGD:

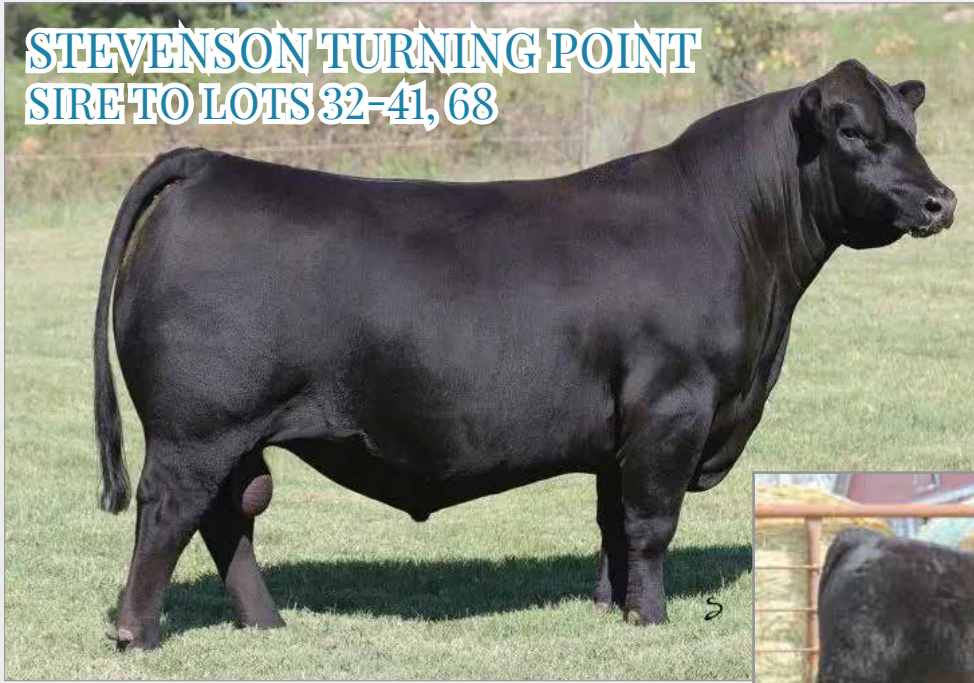
ACT BW	ADJ WW	ADJ YW	YRL SC	FRAME	ADG			
89	687	1135	39	5.6	2.58			
CE	BW	WW	YW	MCE	MM	MWW	API	TI

The only Triple crown in the sale



LOT 31

STEVENSON TURNING POINT SIRE TO LOTS 32-41, 68



Lot 32

Lot 32

TAG: M002 | 5/8 AN 3/8 CS | BLACK
ASA#: 4385426 | DOB: 3/7/24

PGS: PLATTEMERE WEIGH UP K360

SIRE: STEVENSON TURNING POINT

PGD: STEVENSON PRIDE I167X

DAM: K322

MGS: BVD 123F UC FINLY

MGD: G522

ACT BW	ADJ WW	ADJ YW	YRL SC	FRAME	ADG
83	707	1305	42	6.2	4.5

CE	BW	WW	YW	MCE	MM	MWW	API	TI
17.6	-3	78.8	125.8	8.9	26	65.8	145.5	85.5

A statement about these TURNING POINT bulls. They combine calving ease, balanced traits, great type and high maternal. They are attractive, well balanced with good capacity and muscle. They are all born unassisted from first calf heifers.

Lot 33

TAG: M006 | 1/4 CS 3/4 AN | BLK STAR
ASA#: 4385397 | DOB: 3/9/24

PGS: PLATTEMERE WEIGH UP K360

SIRE: STEVENSON TURNING POINT

PGD: STEVENSON PRIDE I167X

DAM: K207

MGS: JC MR HURON 7262G

MGD: H825

ACT BW	ADJ WW	ADJ YW	YRL SC	FRAME	ADG
80	655	1220	39	5.2	4.19

CE	BW	WW	YW	MCE	MM	MWW	API	TI
16.5	-2.1	80.2	131.1	7.3	24.2	64.8	147	87.2

Lot 34

TAG: M010 | 1/4 CS 3/4 AN | BLACK
ASA#: 4385408 | DOB: 3/12/24

PGS: PLATTEMERE WEIGH UP K360

SIRE: STEVENSON TURNING POINT

PGD: STEVENSON PRIDE I167X

DAM: K274

MGS: GW TRIPLE CROWN 018C

MGD: UC CROCUS A737 BLK

ACT BW	ADJ WW	ADJ YW	YRL SC	FRAME	ADG
65	732	1307	40	5.3	4.4

CE	BW	WW	YW	MCE	MM	MWW	API	TI
18.5	-4.4	71.8	118.3	9.1	22.3	58.6	155.3	84.9

Lot 35

TAG: M017 | 1/2 CS 1/2 AN | BLACK
ASA#: COMMERCIAL | DOB: 3/16/24

PGS: PLATTEMERE WEIGH UP K360

SIRE: STEVENSON TURNING POINT

PGD: STEVENSON PRIDE I167X

DAM: QK252

MGS:

MGD:

ACT BW	ADJ WW	ADJ YW	YRL SC	FRAME	ADG
84	762	1144	42	5.8	3.34

CE	BW	WW	YW	MCE	MM	MWW	API	TI

Lot 36

TAG: M016 | 1/2 CS 1/2 AN | BLACK
ASA#: 4385429 | DOB: 3/15/24

PGS: PLATTEMERE WEIGH UP K360

SIRE: STEVENSON TURNING POINT

PGD: STEVENSON PRIDE I167X

DAM: K314

MGS: KOCH BIG TIMBER 685D

MGD: UC CROCUS B721 BLK Z

ACT BW	ADJ WW	ADJ YW	YRL SC	FRAME	ADG
72	655	1150	41	5.8	3.58

CE	BW	WW	YW	MCE	MM	MWW	API	TI
18	-4	73.2	114	8.8	24.1	61.1	146.1	83.5

Lot 37

TAG: M015 | COMMERCIAL | BLACK
ASA#: COMMERCIAL | DOB: 3/15/24

PGS: PLATTEMERE WEIGH UP K360

SIRE: STEVENSON TURNING POINT

PGD: STEVENSON PRIDE I167X

DAM: K236

MGS:

MGD:

ACT BW	ADJ WW	ADJ YW	YRL SC	FRAME	ADG
70	697	1208	41	5.3	3.55

CE	BW	WW	YW	MCE	MM	MWW	API	TI

Lot 38

TAG: M008 | 3/8 CS 5/8 AN | BLACK
ASA#: 4385424 | DOB: 3/11/24

PGS: PLATTEMERE WEIGH UP K360

SIRE: STEVENSON TURNING POINT

PGD: STEVENSON PRIDE I167X

DAM: K243

MGS: GW TRIPLE CROWN 018C

MGD: G534

ACT BW	ADJ WW	ADJ YW	YRL SC	FRAME	ADG
82	642	1193	41	5.3	3.58

CE	BW	WW	YW	MCE	MM	MWW	API	TI
16.1	-1.9	78.3	126.1	7.9	21.4	60.9	144.9	86

Lot 39

TAG: M020 | 3/8 CS 5/8 AN | BLACK
ASA#: 4385387 | DOB: 3/17/24

PGS: PLATTEMERE WEIGH UP K360

SIRE: STEVENSON TURNING POINT

PGD: STEVENSON PRIDE I167X

DAM: K213

MGS: JC MR HURON 7262G

MGD: H893

ACT BW	ADJ WW	ADJ YW	YRL SC	FRAME	ADG
76	669	1139	42	5.8	2.95

CE	BW	WW	YW	MCE	MM	MWW	API	TI
18.5	-4	75.8	124.8	8.3	23.5	61.8	154.9	87.1

Lot 40

TAG: M021 | 1/2 SM 1/2 AN | BLACK
ASA#: COMMERCIAL | DOB: 3/19/24

PGS: PLATTEMERE WEIGH UP K360

SIRE: STEVENSON TURNING POINT

PGD: STEVENSON PRIDE I167X

DAM: K250

MGS: KOCH BIG TIMBER 685D

MGD: G596

ACT BW	ADJ WW	ADJ YW	YRL SC	FRAME	ADG
85	655	1203	41	7.3	3.88

CE	BW	WW	YW	MCE	MM	MWW	API	TI

Lot 41

TAG: M026 | 1/2 CS 1/2 AN | BLACK
ASA#: COMMERCIAL | DOB: 3/22/24

PGS: PLATTEMERE WEIGH UP K360

SIRE: STEVENSON TURNING POINT

PGD: STEVENSON PRIDE I167X

DAM: QK1

MGS:

MGD:

ACT BW	ADJ WW	ADJ YW	YRL SC	FRAME	ADG
83	630	1150	39	5.4	3.47

CE	BW	WW	YW	MCE	MM	MWW	API	TI



BR TOP TIER - SIRE TO LOTS 42 & 43

Lot 42 TAG: 2211 | 3/4 SM X 1/4 ANGUS | BLACK
 ASA#: COMMERCIAL | DOB: 4/24/24
 PGS: KRJ DAKOTA OUTLAW G974
 SIRE: BR TOP TIER
 PGD: KRDL CAEDENCE C37
 DAM: MGS: JF RANCHER 2222
 MGD:

ACT BW	ADJ WW	ADJ YW	YRL SC	FRAME	ADG			
88	747	1241	38	5.8	4.19			
CE	BW	WW	YW	MCE	MM	MWW	API	TI

Out of a 12 year old cow but check out his depth of body. He's been great since he hit the ground!

Lot 43 TAG: 839 | 5/8 SM X 3/8 ANGUS | BLK Z
 ASA#: COMMERCIAL | DOB: 4/18/24
 PGS: KRJ DAKOTA OUTLAW G974
 SIRE: BR TOP TIER
 PGD: KRDL CAEDENCE C37
 DAM: MGS: INTERGRATE 811
 MGD:

ACT BW	ADJ WW	ADJ YW	YRL SC	FRAME	ADG			
86	722	1197	40	6.3	2.84			
CE	BW	WW	YW	MCE	MM	MWW	API	TI

This blaze face bull is super stout and lots of muscle to go along with him.

ANSON SILAGE CUTTING

call 605-461-8796

FULL SERVICE - chopping, hauling & packing



The 1894 version of silage chopping- Collin and Garrett Anson's Great-Great Grandfather had a custom threshing business in south Hand County. They would also load their equipment on a train and thresh near Brookings, SD as well.



BRIDLE BIT RESOURCE G9117 SIRE TO LOTS 44-51



LOT 45

Lot 44 TAG: 060 | 1/2 SM X 1/2 ANGUS | BLACK
ASA#: COMMERCIAL | DOB: 4/6/24
PGS: HOOK'S ENCORE 65E
SIRE: BRIDLE BIT RESOURCE G9117
PGD: BRIDLE BIT MISS B452
DAM: MGS: DASH 704
MGD:

ACT BW	ADJ WW	ADJ YW	YRL SC	FRAME	ADG			
78	746	1239	39	6.1	3.6			
CE	BW	WW	YW	MCE	MM	MWW	API	TI

Big hip bull with a big top. Moderate sized

Lot 45 TAG: 124 | 3/4 SM X 1/4 ANGUS | BLACK
ASA#: COMMERCIAL | DOB: 4/8/24
PGS: HOOK'S ENCORE 65E
SIRE: BRIDLE BIT RESOURCE G9117
PGD: BRIDLE BIT MISS B452
DAM: MGS: CTS REMEDY 1t01
MGD:

ACT BW	ADJ WW	ADJ YW	YRL SC	FRAME	ADG			
77	694	1250	41	5.6	4.17			
CE	BW	WW	YW	MCE	MM	MWW	API	TI

Check out this guy! You could not ask for much more in this Resource son. His beautiful mother was calving in the cold rain the other night. She did not appear to want to go to the barn so I left her out. In short order she had that calf out, up, and sucking. Cows that do the work for you are very valuable.

Lot 46 TAG: 7001 | 3/4 SM X 1/4 ANGUS | BLACK
ASA#: COMMERCIAL | DOB: 5/3/24
PGS: HOOK'S ENCORE 65E
SIRE: BRIDLE BIT RESOURCE G9117
PGD: BRIDLE BIT MISS B452
DAM: MGS: BCLR CASH FLOW
MGD:

ACT BW	ADJ WW	ADJ YW	YRL SC	FRAME	ADG			
93	802	1347	35	6.5	4.3			
CE	BW	WW	YW	MCE	MM	MWW	API	TI

eat Bull on cows! Big and Powerful! Make feeder steers that everyone will line up to buy

Lot 47 TAG: 0160 | 1/2 SM X 1/2 ANGUS | BLACK
ASA#: COMMERCIAL | DOB: 4/12/24
PGS: HOOK'S ENCORE 65E
SIRE: BRIDLE BIT RESOURCE G9117
PGD: BRIDLE BIT MISS B452
DAM: MGS: BALDRIDGE BRONC 612
MGD:

ACT BW	ADJ WW	ADJ YW	YRL SC	FRAME	ADG			
82	743	1283	38	6.7	3.84			
CE	BW	WW	YW	MCE	MM	MWW	API	TI

This bull has been on my radar and you don't want to miss him in this pen



LOT 48

Lot 48 TAG: 066 | 5/8 SM X 3/8 ANGUS | BLACK
 ASA#: COMMERCIAL | DOB: 4/13/24
 PGS: HOOK'S ENCORE 65E
 SIRE: BRIDLE BIT RESOURCE G9117
 PGD: BRIDLE BIT MISS B452
 DAM: MGS: UNITED 119 G
 MGD:

ACT BW	ADJ WW	ADJ YW	YRL SC	FRAME	ADG			
83	702	1166	42	6.2	3.51			
CE	BW	WW	YW	MCE	MM	MWW	API	TI

Big growth numbers and big growth genetics to back it up

Lot 49 TAG: 862 | 5/8 SM X 3/8 ANGUS | BLACK
 ASA#: COMMERCIAL | DOB: 4/14/24
 PGS: HOOK'S ENCORE 65E
 SIRE: BRIDLE BIT RESOURCE G9117
 PGD: BRIDLE BIT MISS B452
 DAM: MGS: 6400X
 MGD:

ACT BW	ADJ WW	ADJ YW	YRL SC	FRAME	ADG			
84	719	1230	36	6.2	4.2			
CE	BW	WW	YW	MCE	MM	MWW	API	TI

He comes with a perfect frame score. Resource calves are really nice calves and gain well

Lot 50 TAG: 135 | 1/2 SM X 1/2 ANGUS | BLACK
 ASA#: COMMERCIAL | DOB: 4/12/24
 PGS: HOOK'S ENCORE 65E
 SIRE: BRIDLE BIT RESOURCE G9117
 PGD: BRIDLE BIT MISS B452
 DAM: MGS: CONEALY COMRADE
 MGD:

ACT BW	ADJ WW	ADJ YW	YRL SC	FRAME	ADG			
83	702	1147	36	5.7	3.23			
CE	BW	WW	YW	MCE	MM	MWW	API	TI

Put these Resource sons together and you won't be disappointed

Lot 51 TAG: 141 | 1/2 SM X 1/2 ANGUS | BLACK
 ASA#: COMMERCIAL | DOB: 4/28/24
 PGS: HOOK'S ENCORE 65E
 SIRE: BRIDLE BIT RESOURCE G9117
 PGD: BRIDLE BIT MISS B452
 DAM: MGS: EMBLAZON 5048
 MGD:

ACT BW	ADJ WW	ADJ YW	YRL SC	FRAME	ADG			
81	734	1127	36	5.9	3.78			
CE	BW	WW	YW	MCE	MM	MWW	API	TI

Gain from birth to weaning is great! One you would like to have steers out of

Lot 52

TAG: 0110 | 1/4 SM X 3/4 ANGUS | BLK Z
ASA#: COMMERCIAL | DOB: 4/12/24

SIRE: DASH 7115

PGS:

PGD:

MGS: COMBUSTABLE 810

DAM:

MGD:

ACT BW	ADJ WW	ADJ YW	YRL SC	FRAME	ADG			
88	714	1253	40	6.7	4.08			
CE	BW	WW	YW	MCE	MM	MWW	API	TI



Lot 52

Lot 53

TAG: 014 | 1/2 SM X 1/2 ANGUS | BLACK
ASA#: COMMERCIAL | DOB: 4/13/24

SIRE: EXAR JACKPOT 0226B

PGS: EXAR Guru 8719B

PGD: EXAR Henrietta Pride 7045

DAM:

MGS: EPIC 810

MGD:

ACT BW	ADJ WW	ADJ YW	YRL SC	FRAME	ADG			
86	763	1270	39	5.7	4.3			
CE	BW	WW	YW	MCE	MM	MWW	API	TI

We went out of element and use this Jackpot Bull and guys he sure didn't disappoint



EXAR JACKPOT 0226B
SIRE TO LOTS 53 & 54

Lot 54

TAG: 924 | 1/2 SM X 1/2 ANGUS | BLACK
ASA#: COMMERCIAL | DOB: 5/2/24

SIRE: EXAR JACKPOT 0226B

PGS: EXAR Guru 8719B

PGD: EXAR Henrietta Pride 7045

DAM:

MGS: COMBUSTABLE 810

MGD:

ACT BW	ADJ WW	ADJ YW	YRL SC	FRAME	ADG			
93	732	1257	35.5	6	3.28			
CE	BW	WW	YW	MCE	MM	MWW	API	TI

Comes from a beautiful, extremely tame blaze face cow

Lot 55

TAG: 971 | 3/4 SM X 1/4 ANGUS | BLACK
ASA#: COMMERCIAL | DOB: 4/8/24

SIRE: GAME CHANGER 4097

PGS: GW ROBUST

PGD: EMBLAZON 5084

DAM:

MGS: RANGE BOSS 8055

MGD:

ACT BW	ADJ WW	ADJ YW	YRL SC	FRAME	ADG			
75	655	1211	39	5.4	4.56			
CE	BW	WW	YW	MCE	MM	MWW	API	TI

Small at birth but come on with a big weaning with a even bigger yearling weight! Check him out.

Lot 56

TAG: 814 | 1/2 SM X 1/2 ANGUS | BLACK
ASA#: COMMERCIAL | DOB: 4/14/24

SIRE: GAME CHANGER 4097

PGS: GW ROBUST

PGD: EMBLAZON 5084

DAM: 814

MGS: SHS FREIGHTLINER

MGD:

ACT BW	ADJ WW	ADJ YW	YRL SC	FRAME	ADG			
83	773	1304	39	5.6	4.5			
CE	BW	WW	YW	MCE	MM	MWW	API	TI

Really good and deep bull with a big hip in him with growth numbers to burn! Comes out of a Rancher Cow. Don't miss this bull.

Lot 57

TAG: 078 | 1/4 SM X 3/4 ANGUS | BLACK
ASA#: COMMERCIAL | DOB: 4/10/24

SIRE: GAME CHANGER 4097

PGS: GW ROBUST

PGD: EMBLAZON 5084

DAM:

MGS: S A V THUNDERBIRD

MGD:

ACT BW	ADJ WW	ADJ YW	YRL SC	FRAME	ADG			
84	708	1302	42	6.1	4.6			
CE	BW	WW	YW	MCE	MM	MWW	API	TI

This boy has the growth power and comes from Alex favorite cow



Lot 59 TAG: 185 | 1/4 SM X 3/4 ANGUS | BLACK
 ASA#: COMMERCIAL | DOB: 4/12/24
 PGS: HOOKS XAVIER
 SIRE: 6400X
 PGD: S A V FINAL ANSWER
 DAM: MGS: CONNEAL CAPITALIST
 MGD:

ACT BW	ADJ WW	ADJ YW	YRL SC	FRAME	ADG			
83	741	1303	38	5.7	4.9			
CE	BW	WW	YW	MCE	MM	MWW	API	TI

This is another great 6400x son. You can't make numbers this good and make the look this nice with a big hip. Tick of white on his belly



CONNEALY GUARD RAIL 923E
 SIRE TO LOTS 61-63

Lot 62 TAG: 251 | ANGUS | BLACK
 ASA#: COMMERCIAL | DOB: 3/11/24
 PGS: TEHAMA TAHOE B767
 SIRE: CONNEALY GUARD RAIL 923E
 PGD: QUEEN BABES OF CONANGA 870J
 DAM: MGS: CONNEAL CAPITALIST
 MGD:

ACT BW	ADJ WW	ADJ YW	YRL SC	FRAME	ADG			
70	616	993	42	5.2	3.09			
CE	BW	WW	YW	MCE	MM	MWW	API	TI

Guard Rail son is 2 generations calving ease

Lot 58 TAG: 184 | 1/2 SM X 1/2 ANGUS | BLACK
 ASA#: COMMERCIAL | DOB: 4/17/24
 PGS: HOOKS XAVIER
 SIRE: 6400X
 PGD: S A V FINAL ANSWER
 DAM: MGS: BALDRIDGE BRONC
 MGD:

ACT BW	ADJ WW	ADJ YW	YRL SC	FRAME	ADG			
85	707	1248	35.5	5.7	4.7			
CE	BW	WW	YW	MCE	MM	MWW	API	TI

6400x is our herd bull and boy does he put a huge top to his calves

Lot 60 TAG: 2038 | 1/8 SM X 7/8 ANGUS | BLACK
 ASA#: COMMERCIAL | DOB: 3/20/24
 PGS: HOOKS XAVIER
 SIRE: 6400X
 PGD: S A V FINAL ANSWER
 DAM: MGS: COW BOS
 MGD:

ACT BW	ADJ WW	ADJ YW	YRL SC	FRAME	ADG			
65	658	1187	34	5.4	4.31			
CE	BW	WW	YW	MCE	MM	MWW	API	TI

Check out this Heifer Bull with an incredible deep body

Lot 61 TAG: 121 | 1/2 SM X 1/2 ANGUS | BLACK
 ASA#: COMMERCIAL | DOB: 4/10/24
 PGS: TEHAMA TAHOE B767
 SIRE: CONNEALY GUARD RAIL 923E
 PGD: QUEEN BABES OF CONANGA 870J
 DAM: MGS: BCLR MANIFESTO
 MGD:

ACT BW	ADJ WW	ADJ YW	YRL SC	FRAME	ADG			
93	770	1339	37	6.6	5.66			
CE	BW	WW	YW	MCE	MM	MWW	API	TI

This guy is one of the biggest bulls in the pen. He got the big growth numbers and would be great for making them big, even feeder steers

Lot 63 TAG: 2030 | 1/4 SM X 3/4 ANGUS | BLACK
 ASA#: COMMERCIAL | DOB: 3/27/24
 PGS: TEHAMA TAHOE B767
 SIRE: CONNEALY GUARD RAIL 923E
 PGD: QUEEN BABES OF CONANGA 870J
 DAM: MGS: OMF EPIC E27
 MGD:

ACT BW	ADJ WW	ADJ YW	YRL SC	FRAME	ADG			
78	640	1146	38	5	4.28			
CE	BW	WW	YW	MCE	MM	MWW	API	TI

Lot 64

TAG: M037 | 1/4 SM 3/8 AN 3/8 CS | BLACK
ASA#: 4385420 | DOB: 4/5/24

PGS: WL ACCOMPLISHMENT 053

SIRE: KS EFFICIENCY K757

PGD: KS HAVANA H344

DAM: K233

MGS: OMF EPIC E27

MGD: G568

ACT BW	ADJ WW	ADJ YW	YRL SC	FRAME	ADG			
85	675	1080	37	5.6	3.47			
CE	BW	WW	YW	MCE	MM	MWW	API	TI
16.2	-2.4	66.6	108.8	9.6	24.8	60.5	141	76.2



WL ACCOMPLISHMENT 053
GRANDSIRE TO LOT 64

Lot 65

TAG: M035 | 1/2 SM 1/2 AN | BLACK
ASA#: 4385355 | DOB: 4/5/24

PGS: SITZ STELLAR 726D

SIRE: HUFFS STELLER 920 229

PGD: HUFFS ELBA SKYE 920

DAM: G549

MGS: 3C PASQUE 4331B B

MGD: UC CROCUS Z213 BLK

ACT BW	ADJ WW	ADJ YW	YRL SC	FRAME	ADG			
85	738	1239	43	5.6	3.19			
CE	BW	WW	YW	MCE	MM	MWW	API	TI
11.4	0.5	67.5	105	7	21.2	55.2	119.3	73.7

Good half Simm half Angus out of our herd sire STELLER. Dam is very gentle with a great udder. He will make some great females.

Lot 67

TAG: M071 | 1/2 SM 1/2 AN | BLACK
ASA#: 4385374 | DOB: 4/18/24

PGS: SITZ STELLAR 726D

SIRE: HUFFS STELLER 920 229

PGD: HUFFS ELBA SKYE 920

DAM: J032

MGS: LCDR MAKIN' WAVES 711E

MGD: UC CROCUS Z321 BLK

ACT BW	ADJ WW	ADJ YW	YRL SC	FRAME	ADG			
90	626	1245	40	6.3	5.03			
CE	BW	WW	YW	MCE	MM	MWW	API	TI
8.2	2.4	65.3	98.9	4.7	21.2	53.7	106.7	69.3

High rate of gain—put them in the feed lot and watch them grow.

Lot 68

TAG: M007 | 1/2 SM 1/2 AN | BLACK
ASA#: 4385398 | DOB: 3/10/24

PGS: PLATTEMERE WEIGH UP K360

SIRE: STEVENSON TURNING POINT

PGD: STEVENSON PRIDE I167X

DAM: K209

MGS: JC MR HURON 7262G

MGD: H819

ACT BW	ADJ WW	ADJ YW	YRL SC	FRAME	ADG			
80	730	1233	42	4.8	3.95			
CE	BW	WW	YW	MCE	MM	MWW	API	TI
14.1	-1.3	65.2	101.7	7.5	23.4	55.9	117.9	75.1

Another STEVENSON TURNING POINT CALVING EASE BULL. Very high maternal and carcass qualities also. STEVENSON TURNING POINT is a popular calving ease sire used by many area breeders. They have a lot of style.

Lot 66

TAG: M055 | 1/4 SM 3/4 AN | BLACK
ASA#: 4385434 | DOB: 4/9/24

PGS: SITZ STELLAR 726D

SIRE: HUFFS STELLER 920 229

PGD: HUFFS ELBA SKYE 920

DAM: G534

MGS:

MGD:

ACT BW	ADJ WW	ADJ YW	YRL SC	FRAME	ADG			
88	693	1258	38.5	6.6	4.28			
CE	BW	WW	YW	MCE	MM	MWW	API	TI
9.5	1.7	69.3	101.1	4.9	22.5	57	102.5	72.4

A larger frame highweaning high gainer that wil produce great feeder cattle.



SITZ STELLAR 726D
GRANDSIRE TO LOTS 65-67



STEVENSON TURNING POINT
SIRE TO LOTS 32-41, 68

Lot 69 TAG: 940 | BLACK
 ASA#: COMMERCIAL | DOB: 4/4/24
 PGS:
 SIRE: RANCHER 3156
 DAM: PGD:
 MGS: United 119
 MGD:

ACT BW	ADJ WW	ADJ YW	YRL SC	FRAME	ADG			
75	695	1223	38	5.1	3.48			
CE	BW	WW	YW	MCE	MM	MWW	API	TI

Lot 71 TAG: 830 | 3/4 SM X 1/4 ANGUS | BLACK
 ASA#: COMMERCIAL | DOB: 4/13/24
 PGS:
 SIRE: RANCHER 6048
 DAM: PGD:
 MGS: EMBLAZON 5048
 MGD:

ACT BW	ADJ WW	ADJ YW	YRL SC	FRAME	ADG			
86	678	1191	38	5.7	4.1			
CE	BW	WW	YW	MCE	MM	MWW	API	TI

Super deep with a big ole butt on this bull. Lots of meat in this guy

Lot 72 TAG: 4112 | 1/4 SM X 3/4 ANGUS | BLACK
 ASA#: COMMERCIAL | DOB: 4/6/24
 PGS:
 SIRE: RANCHER 6084
 DAM: PGD:
 MGS: SAV THUNDERBIRD
 MGD:

ACT BW	ADJ WW	ADJ YW	YRL SC	FRAME	ADG			
78	632	1101	41	6.6	4			
CE	BW	WW	YW	MCE	MM	MWW	API	TI

Easy Calving with a bigger frame. Gain of 4.0

Lot 73 TAG: 6163 | 1/2 SM X 1/2 ANGUS | BLACK
 ASA#: COMMERCIAL | DOB: 5/6/24
 PGS:
 SIRE: RANCHER 6048
 DAM: PGD:
 MGS: EMBLAZON 5048
 MGD:

ACT BW	ADJ WW	ADJ YW	YRL SC	FRAME	ADG			
83	701	1128	37	5	2.72			
CE	BW	WW	YW	MCE	MM	MWW	API	TI

This is the youngest bull on the sale. He is keeping up with the older boys. Emblazon cows have great udders



COLORADO BRIDLE BIT E752 - SIRE TO LOTS 74 & 75

Lot 74 TAG: M025 | 1/2 SM 1/4 AN 1/4 CS | BLACK
 ASA#: 4385419 | DOB: 3/20/24
 PGS: HOOK'S BOZEMAN 8B
 SIRE: COLORADO BRIDLE BIT E752
 DAM: K277
 PGD: BRIDLE BIT MISSB452
 MGS: GW TRIPLE CROWN 018C
 MGD: G624

ACT BW	ADJ WW	ADJ YW	YRL SC	FRAME	ADG			
84	655	1098	41	6	3.59			
CE	BW	WW	YW	MCE	MM	MWW	API	TI

This bull if out of a first calf heifer-high API and TI.

Lot 75 TAG: M028 | 1/2 SM 1/4 CS 1/4 AN | BLACK
 ASA#: 4385356 | DOB: 3/27/24
 PGS: HOOK'S BOZEMAN 8B
 SIRE: COLORADO BRIDLE BIT E752
 DAM: K268
 PGD: BRIDLE BIT MISSB452
 MGS: HOOK'S BLACK HAWK 50B
 MGD: UC CROCUS Y279 BLK

ACT BW	ADJ WW	ADJ YW	YRL SC	FRAME	ADG			
68	660	1186	37	5.5	3.84			
CE	BW	WW	YW	MCE	MM	MWW	API	TI

Very popular calving ease and maternal pedigree. Keep all of his daughters.

Lot 76 TAG: 868 | 1/2 SM X 1/2 ANGUS | BLACK
 ASA#: COMMERCIAL | DOB: 4/1/24
 PGS:
 SIRE: UNITED 119 GR
 DAM: PGD:
 MGS: CAFFEE RESOURCE
 MGD:

ACT BW	ADJ WW	ADJ YW	YRL SC	FRAME	ADG			
80	628	1179	38.5	5.5	3.28			
CE	BW	WW	YW	MCE	MM	MWW	API	TI

Lot **77** TAG: 849 | 3/4 SM X 1/4 ANGUS | BLACK
ASA#: COMMERCIAL | DOB: 4/10/24

SIRE: RANGE BOSS 8055

DAM:

PGS:

PGD:

MGS: MANIFEST 7152

MGD:

ACT BW	ADJ WW	ADJ YW	YRL SC	FRAME	ADG			
83	760	1253	39	6.6	3.2			
CE	BW	WW	YW	MCE	MM	MWW	API	TI

Look at the growth in this 3/4 blood bull

Lot **78** TAG: 6069 | 1/2 SM X 1/2 ANGUS | BLACK
ASA#: COMMERCIAL | DOB: 4/14/24

SIRE: RANGE BOSS 8055

DAM:

PGS:

PGD:

MGS: SURE SHOT 3211

MGD:

ACT BW	ADJ WW	ADJ YW	YRL SC	FRAME	ADG			
83	687	1140	36	5.2	3.36			
CE	BW	WW	YW	MCE	MM	MWW	API	TI

Out of an attractive Sure Shot cow. This is one damn good cow

Lot **79** TAG: 6076 | 1/2 SM X 1/2 ANGUS | BLACK
ASA#: COMMERCIAL | DOB: 4/10/24

SIRE: RANGE BOSS 8055

DAM:

PGS:

PGD:

MGS: SAV THUNDERBIRD

MGD:

ACT BW	ADJ WW	ADJ YW	YRL SC	FRAME	ADG			
84	669	1167	37	6.1	3.95			
CE	BW	WW	YW	MCE	MM	MWW	API	TI

This bull is long made, very attractive with a bigger frame. He's got a nice birth weight with lots of grow

Lot **80** TAG: 049 | 1/4 SM X 3/4 ANGUS | BLACK
ASA#: COMMERCIAL | DOB: 4/5/24

SIRE: IRON HORSE 886

DAM:

PGS:

PGD:

MGS: HOOKS XAVIER14X

MGD:

ACT BW	ADJ WW	ADJ YW	YRL SC	FRAME	ADG			
80	651	1176	37	5.6	4.08			
CE	BW	WW	YW	MCE	MM	MWW	API	TI

Double bred calving ease



Lot 81



Lot **81** TAG: 996 | ANGUS | BLACK
ASA#: COMMERCIAL | DOB: 4/4/24

SIRE: IRON HORSE 886

DAM:

PGS:

PGD:

MGS: EMBLAZON 5048

MGD:

ACT BW	ADJ WW	ADJ YW	YRL SC	FRAME	ADG			
70	637	1143	38	6	3.95			
CE	BW	WW	YW	MCE	MM	MWW	API	TI

Easy calving bull

Lot **82** TAG: 3038 | 1/4 SM X 3/4 ANGUS | BLACK
ASA#: COMMERCIAL | DOB: 4/11/24

SIRE: EPIC 810

DAM:

PGS:

PGD:

MGS: SAV THUNDERBIRD

MGD:

ACT BW	ADJ WW	ADJ YW	YRL SC	FRAME	ADG			
89	634	1160	35	5.7	4.17			
CE	BW	WW	YW	MCE	MM	MWW	API	TI

Deep sided bull



Lot 83

Lot 83 TAG: 0189 | 1/2 SM X 1/2 ANGUS | BLK Z
ASA#: COMMERCIAL | DOB: 3/29/24

SIRE: COLEMAN CHARLO 3121

PGS: COLEMAN CHARLO 0256

PGD: COLEMAN DONNA 714

DAM:

MGS: COMBUSTABLE 810

MGD:

ACT BW	ADJ WW	ADJ YW	YRL SC	FRAME	ADG			
84	675	1097	36	5	2.58			
CE	BW	WW	YW	MCE	MM	MWW	API	TI

If you are looking to add some splash of color this is the bull for you

Lot 84 TAG: 113 | 1/2 SM 1/2 ANGUS | BLACK
ASA#: COMMERCIAL | DOB: 4/18/24

SIRE: COLEMAN CHARLO 3121

PGS: COLEMAN CHARLO 0256

PGD: COLEMAN DONNA 714

DAM:

MGS: MANIFEST 7056

MGD:

ACT BW	ADJ WW	ADJ YW	YRL SC	FRAME	ADG			
98	672	1137	33	5.7	3.94			
CE	BW	WW	YW	MCE	MM	MWW	API	TI

Very attractive dam with a perfect udder. His granddam is a top producer in the herd

Lot 85 TAG: 036 | 1/2 SM X 1/2 ANGUS | BLACK
ASA#: COMMERCIAL | DOB: 4/20/24

SIRE: HURON 0191

PGS: COLEMAN CHARLO 0256

PGD: COLEMAN DONNA 714

DAM:

MGS: EPIC 53

MGD:

ACT BW	ADJ WW	ADJ YW	YRL SC	FRAME	ADG			
70	728	1238	39	6.8	4.2			
CE	BW	WW	YW	MCE	MM	MWW	API	TI

Calving ease bull with long side and big growth

Lot 86 TAG: 089 | 1/2 SM X 1/2 ANGUS | BLACK
ASA#: COMMERCIAL | DOB: 4/16/24

SIRE: COW BOS 0135

PGS:

PGD:

DAM:

MGS: CAFFEE RESOURCE

MGD:

ACT BW	ADJ WW	ADJ YW	YRL SC	FRAME	ADG			
82	751	1277	38	6.7	4.03			
CE	BW	WW	YW	MCE	MM	MWW	API	TI

This was the show off in the pasture as a calf. Even though he has scurs his growth numbers are great!

Lot 87 TAG: 0138 | 1/2 SM X 1/2 ANGUS | BLACK
ASA#: COMMERCIAL | DOB: 4/19/24

SIRE: COW BOS 0135

PGS:

PGD:

DAM:

MGS: OMF EPIC E27

MGD:

ACT BW	ADJ WW	ADJ YW	YRL SC	FRAME	ADG			
80	662	1167	40	5.8	3.67			
CE	BW	WW	YW	MCE	MM	MWW	API	TI

Good easy bull for 2nd calvers

Lot 88 TAG: 7021 | 1/2 SM X 1/2 ANGUS | BLACK
ASA#: COMMERCIAL | DOB: 4/18/24

SIRE: COW BOS 0135

PGS:

PGD:

DAM:

MGS: BCLR CASH FLOW

MGD:

ACT BW	ADJ WW	ADJ YW	YRL SC	FRAME	ADG			
85	677	1183	44	6.7	4.27			
CE	BW	WW	YW	MCE	MM	MWW	API	TI

Got a splash of white and a bigger frame

Lot 89 TAG: 119 | 1/4 SM X 3/4 ANGUS | BLACK
ASA#: COMMERCIAL | DOB: 4/17/24

SIRE: COW BOS 0135

PGS:

PGD:

DAM:

MGS: LAD CAPITALIST 316

MGD:

ACT BW	ADJ WW	ADJ YW	YRL SC	FRAME	ADG			
75	656	1151	39	5.8	4.72			
CE	BW	WW	YW	MCE	MM	MWW	API	TI

Bigger frame bull with a tick of white on head. Big growth numbers from birth to wean. His full sister is the top bred heifer this year

Reference Sires

Reference

A

DEER VALLEY GROWTH FUND | PB AN

SIRE: BASIN PAYWEIGHT 1682

BASIN PAYWEIGHT 0065

21AR O LASS 7017

DAM: DEER VALLEY RITA 36113

PLATTEMERE WEIGH UP K360

DEER VALLEY RITA 9457

AAA REG #	DOB	CE	BW	WW	YW	CEM	MILK	MW	\$C	\$W
18827828	1/22/17	10	1.5	91	168	12	26	108	295	94



DEER VALLEY GROWTH FUND - SIRE TO LOTS 15-25

Reference

B

STEVENSON TURNING POINT | PB AN

SIRE: PLATTEMERE WEIGH UP K360

SITZ UPWARD 307R

BARBARA OF PLATTEMERE 337

DAM: STEVENSON PRIDE 1167X

S A V BISMARCK 5682

FSHK PRIDE 180

AAA REG #	DOB	CE	BW	WW	YW	CEM	MILK	MW	\$C	\$W
#+*18434747	1/21/16	8	-2.7	59	99	10	22	51	281	64



STEVENSON TURNING POINT - SIRE TO LOTS 32-41, 68

Reference

C

SCHOOLEY KROWN 28K | PB SM

SIRE: KBHR REVOLUTION H071

HHS MR 847D

WS MISS SUGAR C4

DAM: SCHOOLEY MISS 3000A 823F

G A R PROPHET

CCR MS SINGLETARY 3000A

ASA REG #	DOB	CE	BW	WW	YW	MCE	MM	MWW	API	TI
4115546	2/14/2022	14.1	0.9	100.6	167.7	8.7	19.8	70.1	165.5	103.7



SCHOOLEY KROWN 28K- SIRE TO LOTS 1-7

Reference

D

BRIDLE BIT RESOURCE G9117 | PB SM

SIRE: HOOK'S ENCORE 65E

HOOK'S BEACON 56B

HOOK'S CHATTER 63C

DAM: BRIDLE BIT MISS B452

SAND RANCH HAND

BRIDLE BIT MISS Y183

ASA REG #	DOB	CE	BW	WW	YW	MCE	MM	MWW	API	TI
3561070	3/12/2019	16.3	-1.2	86.4	140.6	10.6	32.9	76.1	164.4	95.5



BRIDLE BIT RESOURCE G9117 - SIRE TO LOTS 44-51

Detailed Report

Lot #	Animal Information			Decision Indexes			Maternal					Production					Carcass						
	Animal ID Number	Sample Barcode Number	Gender (M/F)	Breed	Igenity Maternal Index	Igenity Production Index	Igenity Terminal Index	BW	CED	CEM	HPR	MILK	STAY	DOC	WW	ADG	YW	RFI	SC	MARB	REA	FAT	TEND
1	M041	AF06882188	M	OT	6.05	6.65	6.80	7	7	6	5	6	5	6	7	7	6	5	8	6	4	7	7
2	951	AF05854191	M	OT	5.8	6.40	6.90	6	8	4	7	5	3	6	7	7	8	5	6	9	3	7	8
3	M062	AF05636442	M	OT	7.1	6.50	5.80	5	9	10	6	7	5	6	7	7	6	4	6	6	5	5	6
4	M079	AF05854232	M	OT	5.6	6.50	7.80	8	6	6	6	4	5	7	7	7	7	4	8	7	2	8	9
5	626RD	AF05636362	M	OT	5.75	6.40	7.05	7	6	6	7	6	5	6	7	7	7	5	7	7	4	9	8
6	7037	AF05636449	M	OT	5.95	6.10	6.35	7	8	6	7	4	5	4	7	7	7	5	8	6	4	9	6
7	3157	AF05854185	M	OT	5.45	6.55	7.00	8	5	5	4	5	6	3	7	8	7	6	6	7	5	7	8
8	M032	AF05636441	M	OT	4.7	6.25	7.90	7	2	1	7	3	5	7	7	8	8	5	6	9	4	4	10
9	M036	AF06882118	M	OT	6	5.80	6.15	6	6	7	5	4	5	6	8	8	8	5	5	7	3	7	6
10	X45	AF05636754	M	OT	5.6	5.70	5.50	5	7	8	4	4	5	7	6	7	7	6	6	7	5	5	5
11	6199GR	AF05636759	M	OT	6.5	7.00	6.75	5	8	8	4	3	7	6	8	8	8	5	6	7	8	5	7
12	M075	AF06882147	M	OT	5.95	5.85	5.70	6	5	8	5	4	6	8	7	8	7	6	5	4	8	2	9
13	M047	AF05636361	M	OT	5.65	5.35	5.20	9	4	5	6	6	7	5	5	6	5	6	3	7	3	4	5
14	3097	AF06882149	M	OT	6.35	6.85	7.00	6	8	7	6	7	6	5	6	8	7	6	4	7	7	6	9
15	203	AF05636446	M	OT	6.75	6.50	6.40	6	7	7	6	7	6	5	9	8	9	7	8	7	6	6	10
16	M004	AF06882148	M	OT	5.7	5.90	6.95	5	7	6	8	3	3	4	7	8	8	5	6	7	8	6	3
17	236	AF06882117	M	OT	5.75	6.00	6.60	5	6	7	6	2	4	6	9	9	9	7	5	6	6	6	10
18	2013	AF06882123	M	OT	5.2	5.45	6.40	7	3	4	6	5	4	3	8	8	8	6	6	6	6	3	8
19	280GR	NE05050921	M	OT	6.05	6.55	7.35	5	7	7	6	4	4	6	8	9	9	5	8	7	7	7	9
20	292GR	AF05854197	M	OT	5.55	5.65	7.05	7	5	3	8	2	4	4	10	10	10	7	7	5	8	6	3
21	281	NE05050924	M	OT	5.9	5.85	7.05	7	5	5	9	4	3	6	10	10	10	8	6	7	7	6	8
22	219GR	AF05854180	M	OT	5.45	5.95	7.50	7	4	3	6	4	4	4	10	9	10	6	5	6	8	5	3
23	206	AF05854187	M	OT	6.5	6.55	6.80	7	5	6	8	4	6	5	9	10	9	6	7	7	7	6	5
24	2022	AF06882180	M	OT	6.3	6.25	6.95	7	5	5	9	2	5	2	10	9	10	6	6	7	6	7	4
25	224	AF06882179	M	OT	5	5.05	6.30	4	6	5	7	5	2	4	7	9	8	8	5	7	5	6	5
26	002	AF05854193	M	OT	5.5	5.90	6.00	6	5	6	6	5	5	7	7	8	8	8	6	8	8	5	3
27	0190	AF05636366	M	OT	5.95	6.50	6.60	7	7	6	7	1	6	9	8	8	8	7	6	7	7	7	6

865	AF05636369	M	OT	5.6	6.25	6.55	8	4	4	6	5	6	6	8	7	5	6	6	5	6	5	6	4	7	6	6	8	6	6	7	7	
7148	AF05854181	M	OT	5.25	6.25	7.35	7	4	3	6	4	5	4	5	4	7	7	7	4	7	4	7	6	4	6	9	4	6	8	6	7	8
6108	AF06882033	M	OT	5.5	5.75	6.55	6	5	5	5	7	4	4	4	7	8	8	5	6	8	5	6	6	7	5	7	5	7	7	7		
6177	AF05636367	M	OT	5.2	5.65	6.20	4	7	4	6	4	5	4	5	5	6	6	5	4	7	6	5	4	7	6	4	4	6	4	6		
M002	AF05854188	M	OT	5.2	5.85	7.00	6	6	5	5	4	4	4	7	7	9	8	6	6	5	8	6	5	8	5	5	9	5	9	9		
M006	AF05636445	M	OT	6.7	6.40	6.20	5	8	8	6	4	6	5	8	7	8	7	8	5	6	7	5	6	7	5	4	6	6	7	6		
M010	AF06882187	M	OT	6	6.55	6.35	4	7	8	6	4	6	6	6	7	6	7	6	7	4	8	6	6	5	7	6	5	7	7			
M017	AF05854195	M	OT	7	6.95	6.25	3	9	8	6	6	8	9	5	5	5	3	5	6	6	6	6	6	6	6	6	7	6	6	6		
M016	NE05050922	M	OT	5.15	5.30	6.05	6	7	6	3	5	3	5	7	6	7	6	7	5	7	6	7	5	7	6	8	5	3	6	6		
M015	AF06882178	M	OT	6.75	7.00	6.65	5	8	8	5	6	7	7	7	7	7	7	7	5	5	7	5	7	7	8	6	5	7	7	7		
M008	AF05636755	M	OT	6.15	6.00	5.55	4	7	8	7	4	5	4	6	7	7	6	7	5	4	8	6	6	6	6	6	7	4	7	4		
M020	AF06882177	M	OT	6	6.25	6.50	5	9	10	4	5	4	6	7	8	7	8	6	7	8	6	7	8	6	7	7	6	5	8	8		
M021	AF06882193	M	OT	5.75	5.90	6.05	5	6	6	5	8	6	7	6	7	6	7	6	8	3	7	5	4	4	7	5	4	4	7	5		
M026	AF05854235	M	OT	6.5	5.90	5.40	3	9	9	7	5	5	7	6	6	6	6	6	6	6	4	7	5	7	5	7	7	5	7	5		
2211	AF06882119	M	OT	4.65	5.15	5.35	7	4	5	4	6	5	6	4	5	4	5	4	6	6	5	6	6	5	6	4	6	5	5	5		
839	AF06882176	M	OT	5.95	6.25	7.10	6	6	6	5	5	5	2	8	8	8	8	5	5	6	8	5	5	6	8	3	4	8	4	8		
060	AF06882185	M	OT	6.7	6.75	6.60	5	6	7	7	7	6	5	8	8	8	8	6	5	8	6	6	5	8	6	7	9	7	7	7		
124	AF06882183	M	OT	5.45	5.30	6.15	6	6	5	6	5	4	6	7	8	7	8	6	5	4	9	6	5	4	9	4	4	7	4	7		
7001	AF05636368	M	OT	5.15	4.80	5.95	7	6	6	5	6	2	6	7	6	6	6	4	5	8	3	4	5	8	3	4	6	6	6	6		
0160	AF05854184	M	OT	5.8	5.90	6.45	8	5	4	6	5	6	6	7	7	7	4	5	4	8	4	5	4	8	4	6	7	7	7	7		
066	AF05636447	M	OT	5.35	5.70	6.20	6	5	7	6	3	4	4	6	7	6	5	6	6	5	6	6	6	5	6	6	7	6	6	7		
862	AF06882191	M	OT	6.2	6.35	5.85	5	6	6	6	5	7	5	6	6	6	6	4	6	6	6	6	6	6	8	6	6	6	6	6		
135	AF06882190	M	OT	6.1	6.20	7.00	8	5	4	6	7	6	2	8	8	8	5	3	5	8	5	3	5	9	3	4	8	8	6	8		
141	AF05636444	M	OT	6.65	6.35	6.50	4	8	8	5	6	6	4	7	6	7	4	4	5	7	4	4	5	7	4	5	7	4	5	7		
0110	AF05854234	M	OT	4.95	6.25	7.95	9	2	2	7	2	4	6	10	8	9	7	8	6	6	10	4	9	7	8	6	10	4	9	10		
014	NE05050923	M	OT	5.65	5.70	6.00	5	7	7	4	5	4	3	7	7	7	5	7	7	5	7	5	7	7	6	6	4	6	6	6		
924	AF06882192	M	OT	5.75	6.20	7.05	6	5	4	7	6	5	5	7	6	7	5	4	6	8	5	4	6	8	5	7	8	6	7	8		
971	AF05854198	M	OT	6.15	6.40	6.05	7	5	6	7	5	7	7	7	6	7	6	5	6	7	5	6	7	5	6	7	6	7	6	6		
814	AF05636365	M	OT	5.05	5.80	6.95	6	4	6	5	3	4	7	7	7	7	6	5	5	9	2	4	8	2	4	8	8	6	4	8		
078	AF05854190	M	OT	5.75	6.00	6.40	7	3	5	4	3	6	4	10	9	9	5	6	5	6	5	6	5	6	6	4	8	6	4	8		
184	AF06882145	M	OT	5.7	6.10	6.85	6	5	6	6	5	4	4	8	8	9	6	5	5	9	6	5	5	9	6	10	8	6	6	10		
185	AF06882154	M	OT	6.1	6.35	7.15	8	6	5	5	5	5	6	9	9	10	4	8	5	8	5	4	8	5	8	5	10	8	5	10		

28 29 30 31 32 33 34 35 36 37 38 39 40 41 42 43 44 45 46 47 48 49 50 51 52 53 54 55 56 57 58 59

60	2038	AF06882182	M	OT	5.8	5.80	7.00	4	5	6	8	5	3	3	3	8	8	8	6	6	5	7	6	6	3	9
61	121	AF05854233	M	OT	4.85	5.15	6.60	10	3	1	6	2	4	9	10	9	9	9	6	6	6	4	8	4	7	8
62	251	AF05636364	M	OT	7.7	6.30	5.55	3	10	9	7	7	7	7	9	9	9	9	7	7	7	6	6	6	5	6
63	2030	AF06882116	M	OT	5.55	5.65	5.85	6	6	5	6	4	5	6	9	10	9	9	10	7	7	5	9	6	10	7
64	M037	AF05854196	M	OT	5.45	5.35	5.85	5	6	6	5	6	4	9	6	7	7	5	3	4	8	5	7	6	6	
65	M035	AF06882175	M	OT	5.75	5.60	6.45	7	5	6	7	6	4	4	7	8	8	6	5	5	6	5	6	5	6	8
66	M055	AF05636750	M	OT	5.3	6.20	7.15	5	5	6	4	6	4	6	6	6	6	4	6	6	6	6	7	5	8	8
67	M071	AF06882186	M	OT	5.75	6.10	7.40	6	6	5	6	7	4	6	7	9	8	5	8	6	6	6	7	4	6	9
68	M007	AF05636758	M	OT	6.35	6.15	5.65	3	10	8	5	2	6	4	7	6	7	5	5	8	5	8	5	6	3	5
69	940	AF05636363	M	OT	6.8	6.35	6.15	7	5	6	8	7	7	5	7	8	8	4	5	6	6	6	5	6	6	6
71	830	AF05854230	M	OT	6.5	6.30	6.00	8	6	6	8	3	7	6	8	6	7	6	5	6	7	5	7	5	7	6
72	4112	AF05854192	M	OT	6.25	5.90	6.20	6	7	4	7	5	6	7	9	7	8	7	8	6	6	6	7	5	6	7
73	6163	AF06882194	M	OT	5.5	6.00	6.90	7	3	2	8	5	6	5	7	7	7	5	7	5	7	5	8	4	6	8
74	M025	AF06882121	M	OT	6.1	6.10	5.80	6	8	9	5	6	6	6	7	5	7	6	7	6	5	9	4	4	6	6
75	M028	AF05854194	M	OT	6.35	6.30	6.50	3	9	9	4	6	5	3	6	7	7	4	5	6	8	3	8	3	5	6
76	868	AF05854238	M	OT	4.95	5.50	7.15	8	3	3	8	4	3	7	8	9	9	7	7	6	8	4	8	4	5	9
77	849	AF06882152	M	OT	5	6.30	7.75	9	3	3	5	2	4	7	9	9	9	4	5	5	10	7	6	6	10	
78	6069	AF06882146	M	OT	5.4	6.10	6.35	4	7	6	6	1	5	6	5	6	5	3	4	6	6	6	6	9	6	
79	6076	AF05636752	M	OT	5.7	5.10	5.70	6	5	5	7	8	4	6	6	7	7	5	5	5	5	5	6	5	4	6
80	049	AF06882189	M	OT	5.95	6.05	6.00	5	5	7	6	4	6	5	7	6	7	6	3	5	8	4	7	6	6	
81	996	AF05854182	M	OT	6.1	6.75	6.40	4	6	7	3	8	7	4	7	6	7	7	4	6	8	6	10	7	7	
82	3038	AF05854186	M	OT	5.35	5.30	5.35	6	5	5	6	6	5	8	5	6	5	5	5	6	5	6	6	7	5	
83	0189	AF06882034	M	OT	5.6	5.85	6.95	6	5	4	6	4	4	7	9	9	9	5	7	6	8	5	5	8	8	
84	113	AF05636751	M	OT	5.55	5.95	6.95	8	3	2	7	5	6	5	9	9	9	7	4	4	9	4	7	9	9	
85	036	AF06882150	M	OT	5.45	6.05	6.10	6	5	5	6	2	6	4	8	8	8	8	6	6	7	6	9	7	7	
86	089	AF05636440	M	OT	4.75	5.55	6.55	7	4	3	4	3	4	5	8	8	8	5	6	5	8	5	9	7	7	
87	0138	AF05636448	M	OT	5.95	6.30	7.15	7	5	4	7	5	6	4	7	6	7	4	7	5	8	3	6	8	8	
88	7021	AF06882181	M	OT	5.6	6.20	7.40	7	5	6	6	4	3	6	7	6	7	2	6	7	8	4	7	7	7	
89	119	AF05854199	M	OT	6.9	6.65	6.15	4	8	7	7	6	8	7	6	5	6	5	6	6	4	10	4	7	6	

Christensen Simmental
37548 221 STREET
WESSINGTON SPRINGS SD 57382



FIRST CLASS MAIL II TIME DATED MATERIAL

Christensen
**SIMMENTAL ONLINE
ONLY**
54th Annual Bull Sale

April 27th, 2025 - Bidding starts at 6pm on DV Auction
75 powerful Simmental / Sim Angus[™] / Angus yearling bulls