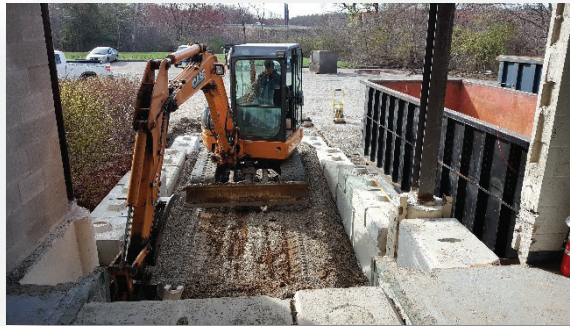




“Instant” Block Construction, Site Demolition and Grading

Case Study	
Date	Spring 2017
Location	205 Flanders Road, Westborough, MA
Facility	76,000 sf industrial manufacturing and warehouse facility
Project Scope	Installation of a drive-in ramp to allow flatbeds and tractor trailers to drive into the building
Time Frame	2 weeks, start to finish, on time, on budget

Conigliaro Block was tasked with installing a new drive in ramp suitable for large flatbed and tractor trailer units weighing over 80,000 lbs. Work included removal and salvage of the existing trash compactor “doghouse” and dock leveler, the cutting and removal of asphalt and steel bollards, the installation of “instant” concrete block walls and the forming and pouring of a ramp with integrated safety curbs. The project was completed in just two weeks to meet tenant’s time requirements.



Call (888) CONIG – 25 for more information