

SYSTEM ANALYSIS AND DESIGN

Worksheet 1: Description of the system

Kelly Holt

Instructional Technology and Distance Education, Nova Southeastern University

IDT 8006 System Analysis and Design

Dr. Judith Converso

February 6, 2023

*Disclaimer this worksheet was submitted per instructions, but it is in part one of three worksheets. As additional research emerged in the process of the needs assessment and analysis, subsequent worksheets incorporated new information. Worksheet 1 as a student sample should not be fully relied upon as context or labels may have been changed and it is only a partial work.

©2023, Please do not distribute. permission granted to Dr. Judith Converso for WS1 student sample only.

SYSTEM ANALYSIS AND DESIGN

XYZ Institution

Description of the system

XYZ Institution is a public, charter high school, grades tenth through twelfth. It has been granted a charter from the XYZ local school district for up to 250 students. XYZ Institution uses a building on XYZ state college campus. Essentially, a hybrid school within a school district subsystem, operated by a state college with a campus subsystem. XYZ Institution is part of the State of Florida k12 public school and school choice subsystem. The charter high school serves a community need and offers an accelerated learning experience for high schoolers. There is academic programming where XYZ students can earn college credit for courses and an associate degree while also receiving a high school diploma. The State of Florida Department of Education (FLDOE) has a strategic plan and four goals:

- Higher Student Achievement
- Seamless Articulation and Maximum Access
- Skilled Workforce and Economic Development
- Quality Efficient Services

XYZ Institution carries out the state's strategic plan. Through observing the system and subsystems diagrammed you can identify there is a seamless articulation and maximum access for the students at XYX Institution. This approach to an education system has many stakeholders. At XYZ Institution the primary stakeholders are students, parents, and families, K12 instructors and college professors, professional staff, administrators and trustees, volunteers, and business clients and partners. There is partner integration with XYZ school district staff,

campus police, and XYZ county health department. XYZ Institution is a subsystem within a system and part of the larger global society.

Figure.1 – Systems and Subsystems Within the System

Using the figures below (or using a larger piece of flip-chart paper) identifying within your institution and partners the system and subsystems relationships from a system and systems approach. You may use more than one to expand the subsystems.

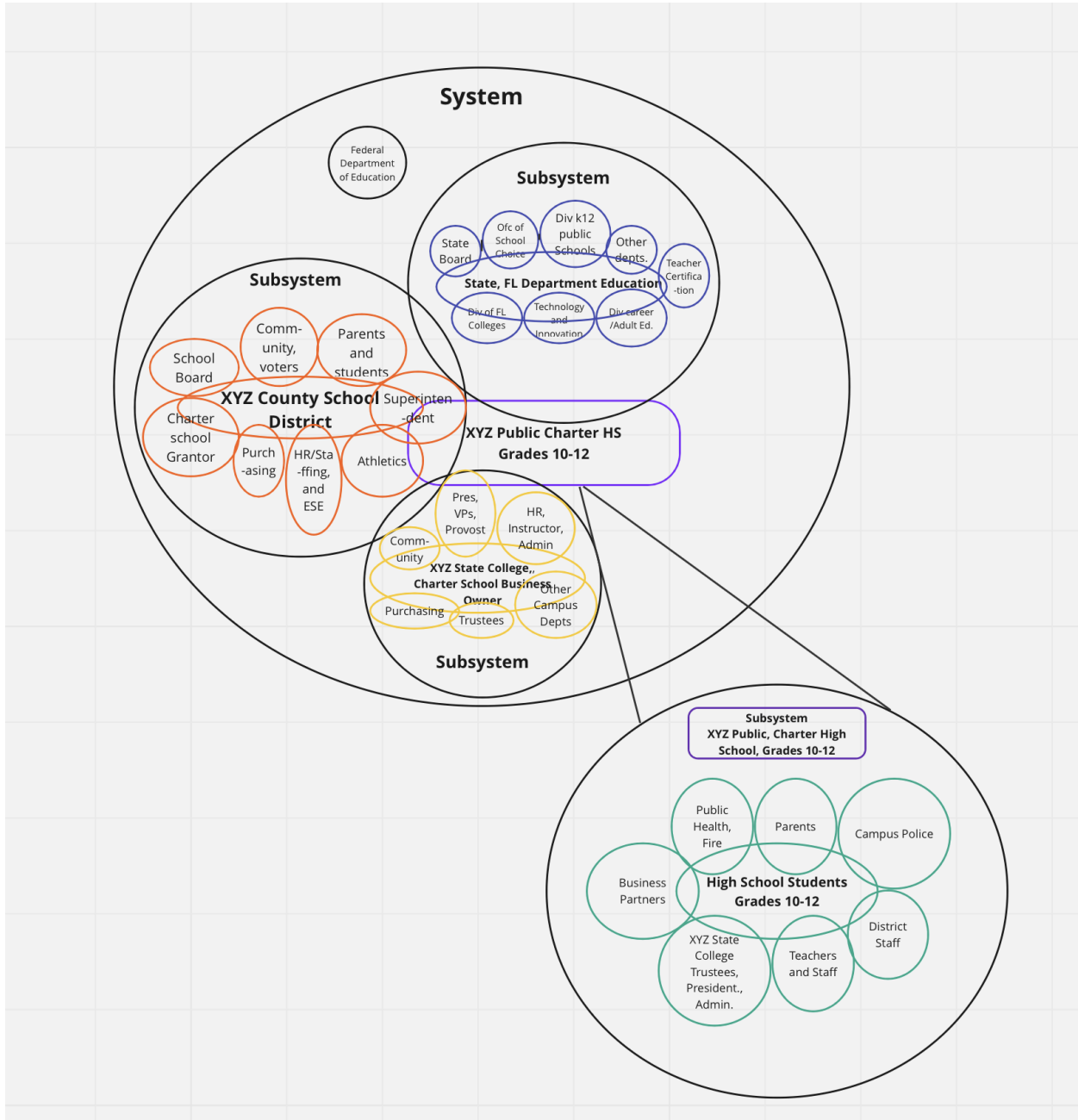


Figure 2. – Your Primary Clients & Beneficiaries: Naming Names

Since clients and beneficiaries may differ slightly between educational institutions at some levels of planning, identify for your institution the possible primary clients and primary beneficiaries of your institutional efforts.

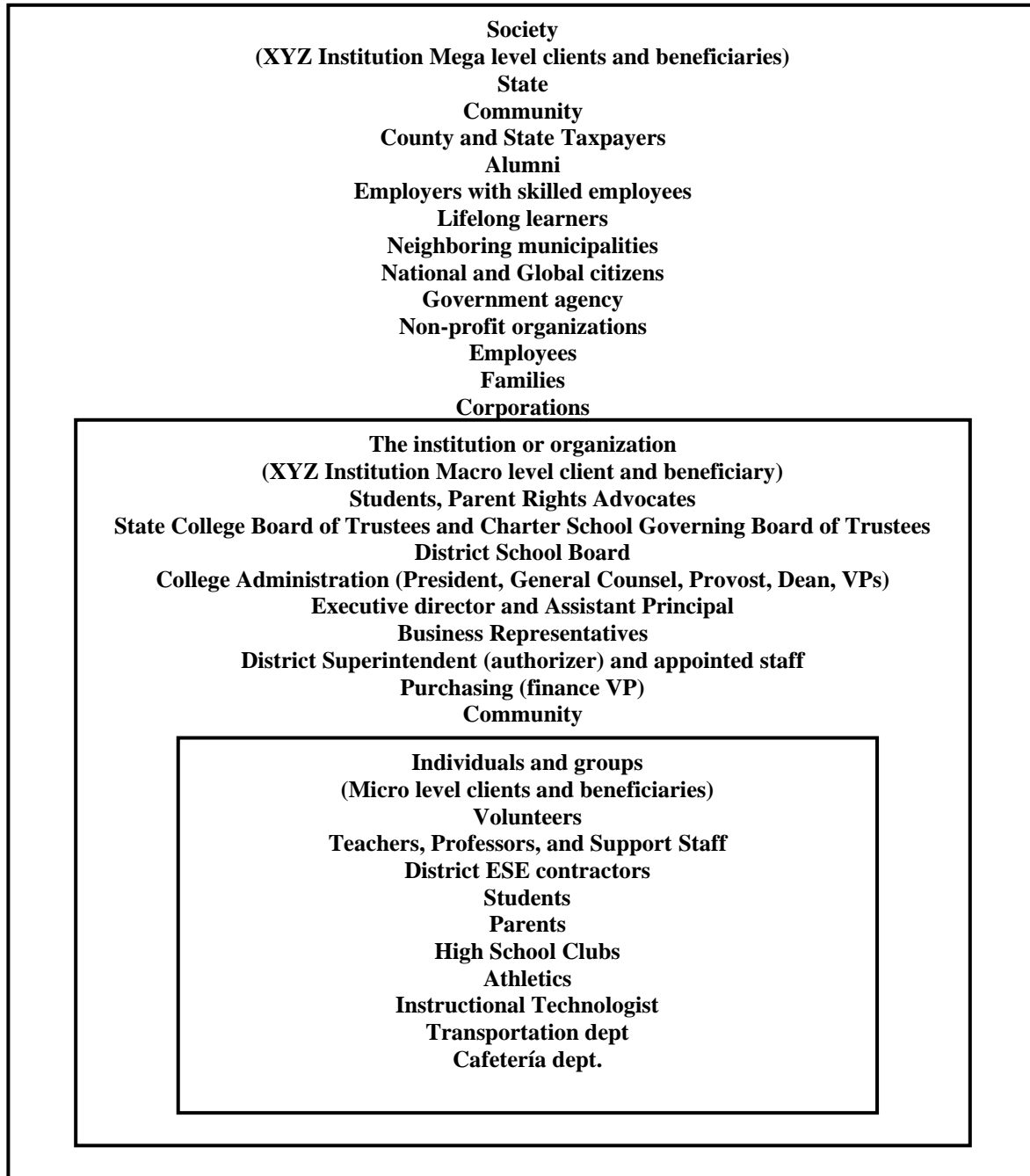


Figure 3 – Identifying the Planning and Assessment Partners and Stakeholders

Complete the following table including the partners and stakeholders that should be included in your institution’s planning and assessment initiative. Additionally, indicate the role of the various partners and stakeholders at each level of planning and assessment.

| Level of Planning and Assessment | Partner and Stakeholder | Role |
|----------------------------------|--|---|
| Mega | FLDOE Commissioner and State Board | Rules, policymaking, enforcement |
| | FLDOE division k12 | Compliance, oversight |
| | FLDOE division school Choice | Compliance, oversight |
| | Alumni | Fundraising, public relations for Sustainability of organization society contributors |
| | Corporations, Business Partners | Labor advisement |
| | County and State Taxpayers | Accountability, observers |
| | Non- profit organizations, NGOs | Mental health, healthcare, self sufficiency services either more or less demand, society contributors |
| | Employees | Gainful employment, society contributors to economy |
| | Families | Stronger, society contributors |
| Macro | Superintendent (authorizer) | District leader and governor of school district |
| | School Board | Elected governing body |
| | Community, voters | Either for or against granting charter to XYZ institution |
| | Parents rights, Advocates, Students | Balances governance and contribute voices |
| | State College Board of Trustees and Charter School Governing Board of Trustees | Oversee contracts for XYZ Charter School, Hiring, Budget, Governance and Advisory |
| | Business Representatives | Advisement of skills and future career needs and advisory |
| | Management Board (Purchasing, Finance) | Oversees books, media, technology, curriculum purchases and budget, and audits. |
| | State College President, Satellite campus President, Provost, Counsel, and other designated appointees | Governance of college policy and alignment with college |
| | Dean of Education, Charter School, and Executive Dir. | Governance, compliance with State, District, and College and its own Charter. |
| Micro | Assistant Principal | Management contributor |

| | | |
|-----------|--|---|
| | Volunteers | Provide support to staff |
| | Parents | Support student and public relations |
| | Clubs, Athletics | Social and leadership development contributors |
| | Students | Active participant, individual consumer of education system |
| | Instructional Technologist | Individual contributor that matches pedagogue with appropriate technology and design. |
| | Teachers, Professors, Guidance Counselors | Direct contributors in planning instruction or career services. |
| | District ESE and FDLRS, transportation, and food service | Support servicers |
| Processes | Teaching | Action planning |
| | learning | Action planning |
| | Managing, implementing | Action planning |
| | governing | Action planning |
| | Fundraising | Action planning |
| | Purchasing (media, curricula) | Action planning |
| | Public relations | Action planning |
| Inputs | Funding | Resource planning |
| | Library, technology, equipment | Resource planning |
| | Students | Resource planning |
| | Employees | Resource planning |
| | Policy and procedures | Resource planning |
| | Regulations, standards, best practices | Resource planning |

Activities selected from

References

Kaufman, R., Watkins, R., & Leigh, D. (2001). *Useful educational results*. Lancaster, PA: Proactive Publishing.

Florida Department of Education, <https://www.fldoe.org/policy/state-board-of-edu/strategic-plan.shtml>