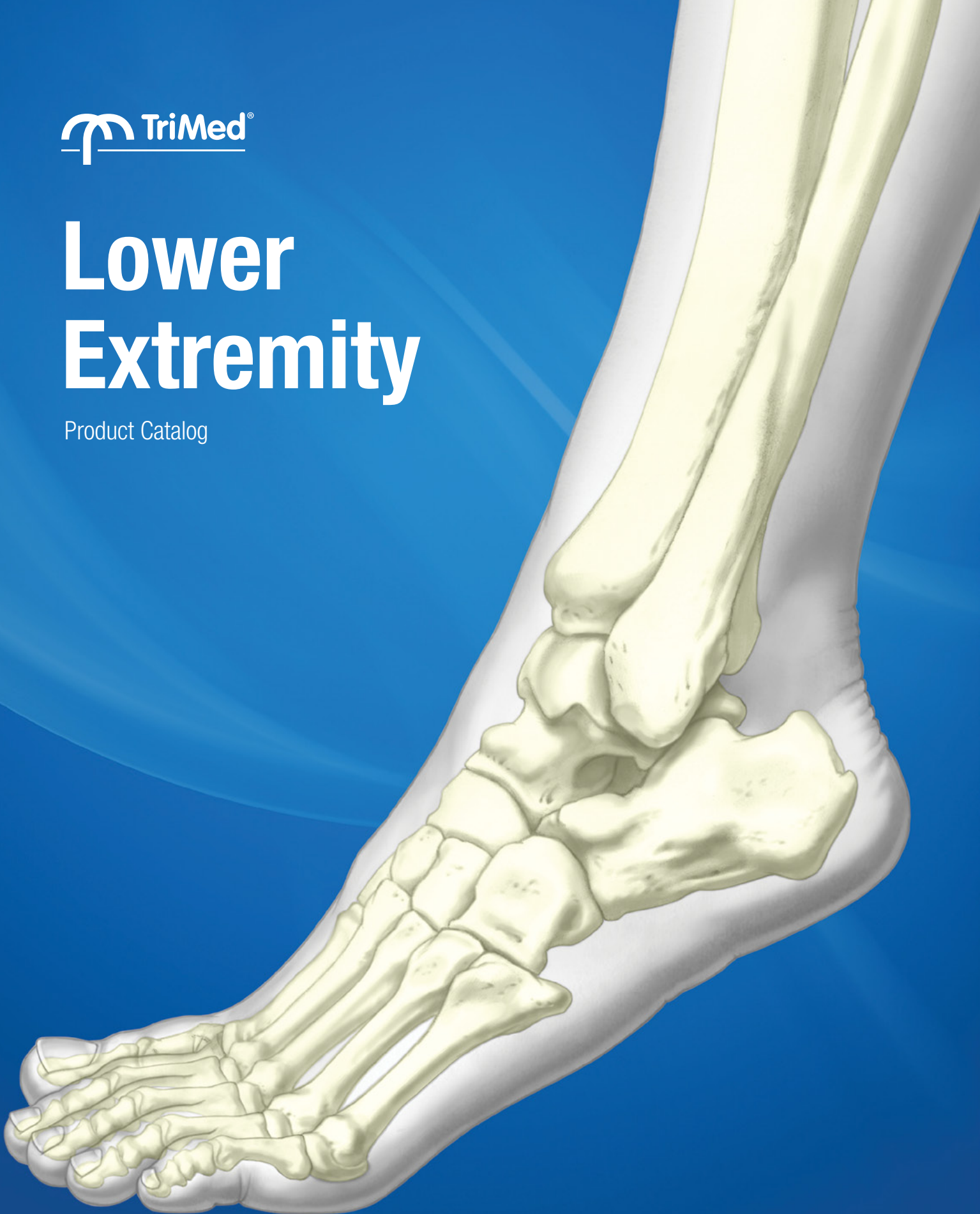




# Lower Extremity

Product Catalog



# Products

## ANKLE FIXATION SYSTEM

- Sidewinder Plate
- Ankle Hook Plate
- Cluster Plate
- Medial Malleolar Sled
- Semi-Tubular Plate
- 4.0 Cannulated Compression Screw
- 4.0 Cortical Screw

## FIFTH METATARSAL FIXATION SYSTEM

- 5th Met Hook Plate
- Jones Screw

## CALCANEAL FRACTURE FIXATION

- Sinus Tarsi Plate
- Perimeter Plate

## CANNULATED SCREW SYSTEM

- Small Headless Screws - 1.7, 2.3, 3.0 & 3.5mm
- Large Headless Screws - 4.5, 5.5 & 7.3mm

## FUSION CUP SYSTEM

- Fusion Cup

## FOOT PLATING SYSTEM

- Straight Plate
- H-Plate
- 1st Met Plate
- 1st MTPJ Plate
- T-Plate
- X-Plate
- Calcaneal Sliding Osteotomy Plate
- Lapidus Plate
- Evans Osteotomy Plate

## DISTAL XTREMITIES SYSTEM

- Straight Plate
- T-Plate



## Sidewinder Plate

Double antiglide plate with opposing compression tabs eliminate need for lag screws

### Typical uses:

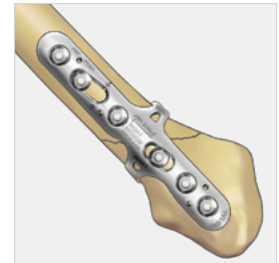
- Short oblique fibula fractures

### Sizes: Lengths:

6 Hole	69mm
7 Hole	76mm

Left & Right

Narrow, Medium & Wide tab widths



## Ankle Hook Plate

Contoured plate with intramedullary hooks for enhanced rotational stability

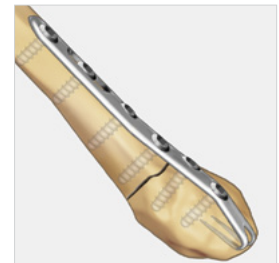
### Typical uses:

- Lateral and medial malleolus fractures

### Sizes: Lengths:

4 Hole	57mm
6 Hole	73mm
8 Hole	88mm
10 Hole*	118mm
12 Hole*	136mm

\* Special Order



## Cluster Plate

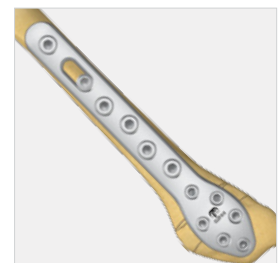
Contoured low profile plate with offset screw holes for biplanar load support and aiding in capturing small fragments

### Typical uses:

- Distal fibula comminuted fractures

### Sizes: Lengths:

6 Hole	92mm
8 Hole	116mm
12 Hole	171mm





## Medial Malleolar Sled

Simple one-piece tension band combining surface and intramedullary fixation

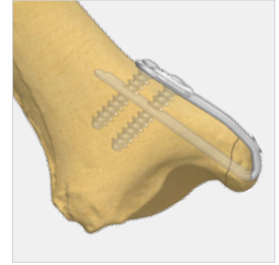
### Typical uses:

- Medial malleolus fractures
- Fixation of medial malleolar osteotomies

### Lengths:

30mm  
37mm  
51mm\*

\* Special Order



## Semi-Tubular Plate

Contoured plate with offset screw holes for greater load support

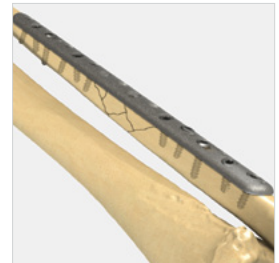
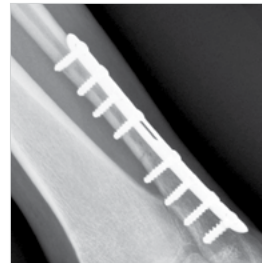
### Typical uses:

- Distal / proximal long bone fixation

### Sizes:      Lengths:

6 Hole	67mm
8 Hole	85mm
10 Hole	103mm
12 Hole	150mm
15 Hole*	178mm

\* Special Order



## 4.0 Cortical Screw

Low-profile, self-tapping screw for enhanced bone purchase

### Typical uses:

- Syndesmosis fixation
- Posterior malleolar fixation

### Lengths:

35-60mm (5mm increments)





## 4.0 Cannulated Compression Screw

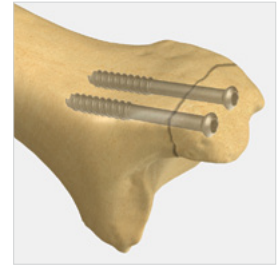
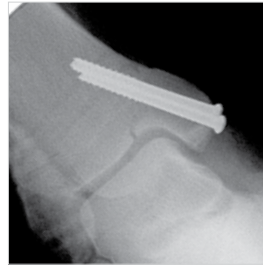
Low-profile, self-drilling, self-tapping screw for fracture fixations

### Typical uses:

- Distal tibial metaphyseal fractures
- Medial malleolus fractures

### Lengths:

35-60mm (5mm increments)



## FIFTH METATARSAL FIXATION SYSTEM



## 5th Met Hook Plate

Small, versatile and low profile plate with intramedullary hooks for rotational support

### Typical uses:

- Proximal fifth metatarsal fractures

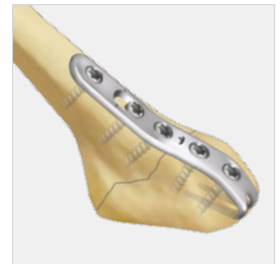
### Sizes:      Lengths:

5 Hole      36mm

7 Hole      48mm

9 Hole\*      69mm

\* Special Order



## Jones Screw

Headless solid screw with tapered tip for ease of insertion

### Typical uses:

- Jones fractures

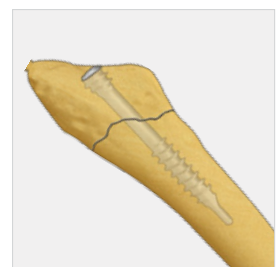
### Sizes:      Lengths:

4.5mm      40 - 60mm

5.5mm      40 - 60mm

6.5mm      40 - 60mm

5mm increments





## Sinus Tarsi Plate

Plate with variable-angle locking pegs for extra support of posterior facet for minimally invasive approach for calcaneal fractures

### Typical uses:

- Calcaneal fractures

### Sizes (One-limb):

7 Hole

8 Hole

### Length:

59mm

69mm

### Sizes (Two-limb):

9 Hole

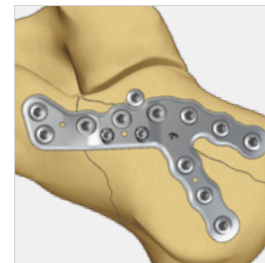
11 Hole

### Length:

59mm

69mm

*Lefts & Rights*



## Perimeter Plate

Low profile, anatomically contoured plates for easy in-situ positioning

### Typical uses:

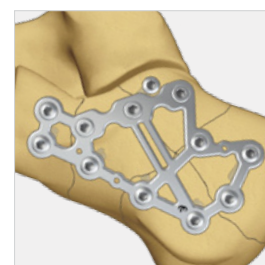
- Calcaneal fractures

### Length:

54mm

66mm

*Lefts & Rights*



## Small Headless Screws - 1.7, 2.3, 3.0 & 3.5mm

Broad array of self-drilling headless cannulated screws all in one tray



### Typical Uses

	1.7	2.3	3.0	3.5
Malleolar Fractures				●
Calcaneal Fractures			●	●
Talus Fractures				●
Midfoot Arthrodeses			●	●
Metatarsal Phalangeal Joint Fusion		●	●	●
Chevron Osteotomy	●	●	●	●
Hallux Interphalangeal Joint Fusion		●	●	●
Proximal Interphalangeal Joint Fusion	●			
Weil Osteotomy	●	●		
Lisfranc Fracture				●
Lapidus Procedure				●
Ludloff Osteotomy			●	
Mau Osteotomy		●	●	
Scarf Osteotomy		●		
Akin Osteotomy	●			

### Sizes:

**1.7** 6-8mm (2mm increments)  
8-14mm (1mm increments)

**2.3** 10-20mm (2mm increments)  
20-26mm (1mm increments)  
26-28mm (2mm increments)

**3.0** 10-20mm (2mm increments)  
20-26mm (1mm increments)  
26-36mm (2mm increments)

**3.5** 16-18mm (2mm increments)\*  
20-32mm (2mm increments)  
35-45mm (5mm increments)

\* Special Order



## Large Headless Screws - 4.5, 5.5 & 7.3mm

Self-drilling large headless cannulated screws with two distal thread length options

### Typical Uses

	4.5	5.5	7.3
Malleolar Fractures	●		
Calcaneal Fractures	●	●	●
Talus Fractures	●	●	
Midfoot Arthrodeses	●	●	●
Calcaneal Osteotomy	●	●	●
Jones Fracture	●	●	
Subtalar Arthrodesis	●		●
Calcaneocuboid Arthrodesis	●	●	
Talonavicular Arthrodesis	●	●	
Lisfranc Fracture	●		



### Sizes:

**4.5** 26-44mm (2mm increments)  
44-64mm (4mm increments)

**5.5** 26-44mm (2mm increments)  
44-64mm (4mm increments)

**7.3** 44-60mm (4mm increments)\*  
60-112mm (4mm increments)

*\* Special Order*  
*Long threads available in selected lengths*

## FUSION CUP SYSTEM



### Fusion Cup

Radiolucent PEEK plate with variable-angle locking screw technology

#### Typical uses:

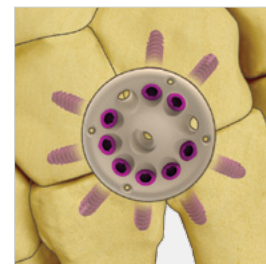
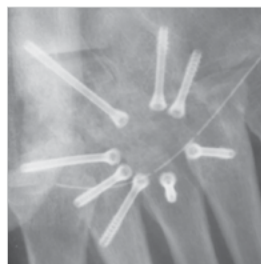
- Lisfranc Fusion
- Talonavicular Fusion
- Calcaneal Cuboid Fusion

#### Sizes:

7 Hole  
10 Hole  
10 Hole

#### Diameters:

14mm  
18mm  
22mm







## Straight Plate

Versatile, low-profile plate for metatarsal and phalangeal osteotomies, fusions and fractures

### Typical uses:

- Metatarsal & Phalangeal osteotomies, fractures and fusions
- TMT fusions

### Sizes:      Lengths:

4 Hole	30mm
6 Hole	46mm



## H-Plate

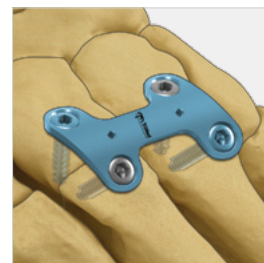
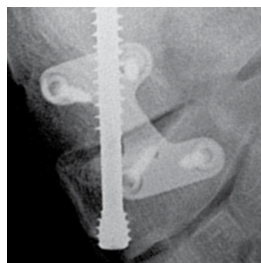
Multipurpose implant for various types of osteotomies, fusions and fractures

### Typical uses:

- Stabilization of arthrodesis or osteotomy

### Lengths:

20mm  
22mm  
28mm



## 1st Met Plate

Plate option for stabilization of the first metatarsal osteotomy site

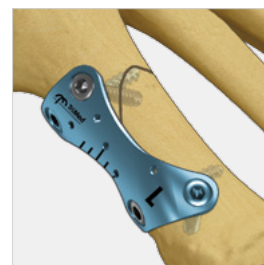
### Typical uses:

- First metatarsal osteotomy (Ludloff Procedure)

### Length:

33mm

*Left & Right*





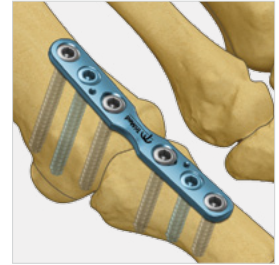
## 1st MTPJ Plate

1st MTPJ fusion plate with integral 7 degree valgus angle

### Typical uses:

- First MTPJ Fusion

**Sizes:** 6 Hole  
**Lengths:** 50mm



## T-Plate

Versatile plate for use in various arthrodeses, osteotomies and fractures

### Typical uses:

- Stabilization of fusions, fractures and osteotomies

**Sizes:** 9 Hole  
**Lengths:** 64mm





## X-Plate

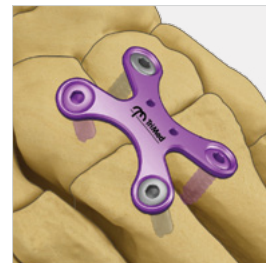
Utility implant for numerous midfoot and rearfoot procedures

### Typical uses:

- Midfoot stabilization of arthrodesis

### Sizes:      Lengths:

Small	36mm
Medium	40mm



## Calcaneal Sliding Osteotomy Plate

Three stepped options for medializing calcaneal osteotomy

### Typical uses:

- Medial displacement calcaneal osteotomy

### Sizes:

6mm	Step
8mm	Step
10mm	Step



## Lapidus Plate

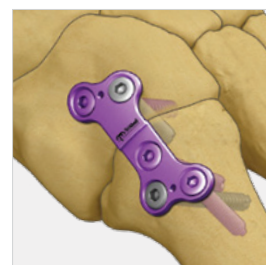
Stepped plate with 3 options for more precise deformity corrections

### Typical uses:

- Lapidus procedure

### Sizes:      Lengths:

0mm Step	42mm
1mm Step	42mm
2mm Step	42mm





## Evans Osteotomy Plate

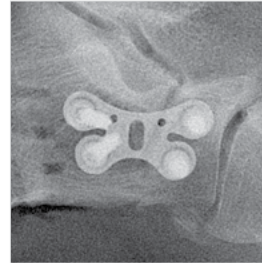
Plate option for stabilization of Evans calcaneal opening wedge osteotomy site

### Typical uses:

- Lateral lengthening calcaneal osteotomy (Evans Calcaneal Osteotomy)

### Length:

31mm



## DISTAL XTREMITIES SYSTEM

### Straight Plate

Versatile, low profile plate to stabilize osteotomies or fractures of extremities

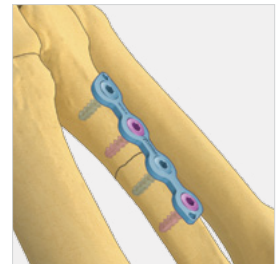
### Typical uses:

- Fractures and osteotomies of extremities



### Sizes: Lengths:

3 Hole	22mm
3 Hole	25mm
4 Hole	30mm
6 Hole	44mm



### T-Plate

Versatile plate for use for various fractures and osteotomies of extremities

### Typical uses:

- Fractures and osteotomies of extremities

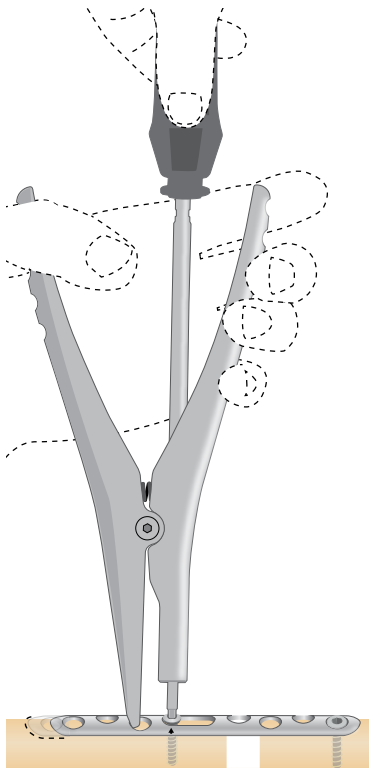


### Sizes: Lengths:

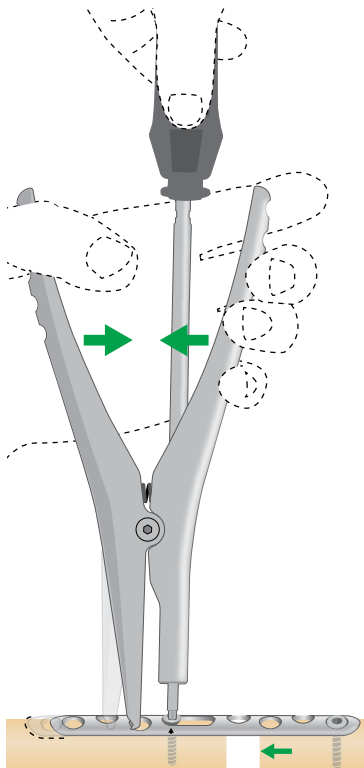
5 Hole	28mm
7 Hole	44mm



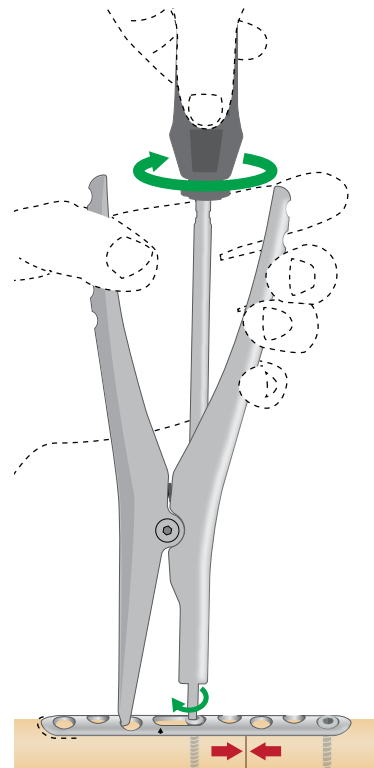
## EXPANDER TOOL - COMPRESSION



Insert driver tip into screw head and engage jaw into hole away from fracture

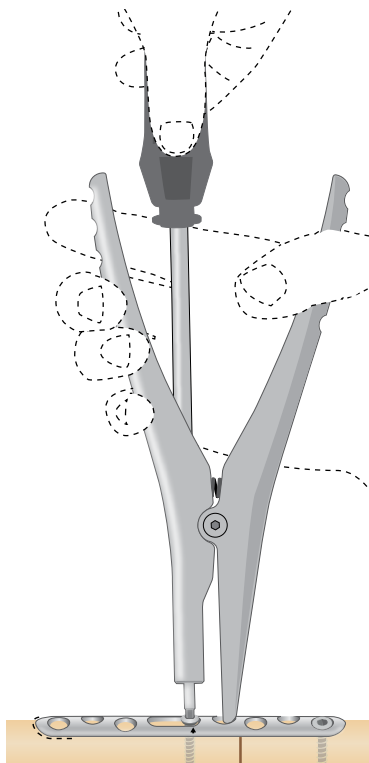


Loosen screw 1/4 turn and slowly squeeze handle to compress fracture

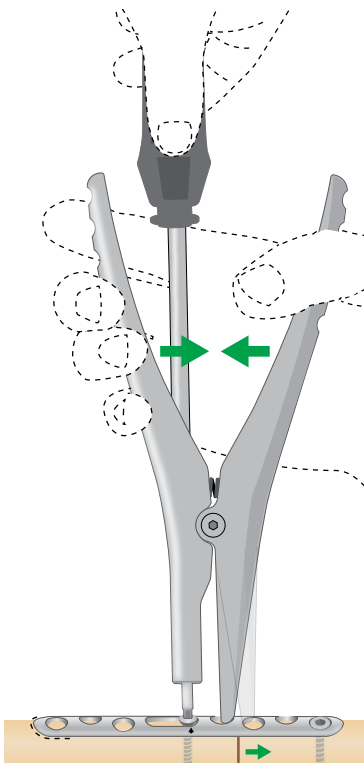


Tighten screw and finalize fixation

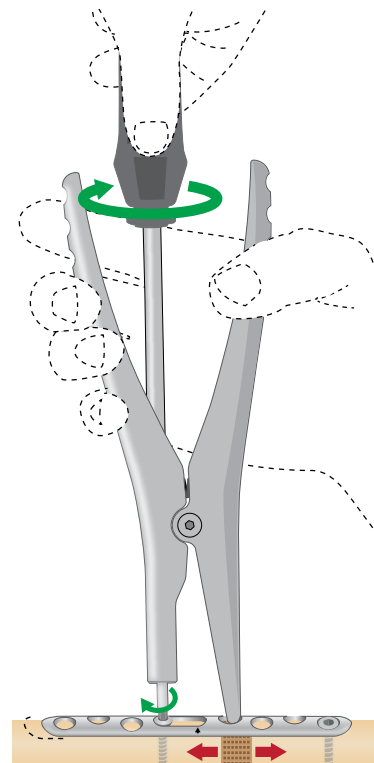
## EXPANDER TOOL - DISTRACTION



Insert driver tip into screw head and engage jaw into hole closer to fracture



Loosen screw 1/4 turn and slowly squeeze handle to distract



Tighten screw, graft and finalize fixation









TriMed, Inc. / 27533 Avenue Hopkins / Valencia, CA 91355 USA / 800-633-7221 / [www.trimedortho.com](http://www.trimedortho.com)

The presently issued U.S. patents are: 6,077,266; 6,113,603; 7,037,308; 7,044,951; 7,195,633; 7,540,874; 7,942,877; 8,177,822; 8,821,508; 8,906,070; 9,089,376; 9,283,010; 9,220,546; 9,237,911; 9,402,665; 9,636,157; 9,861,402. See [trimedortho.com](http://trimedortho.com) for all listed patents.

The technique presented is one suggested surgical technique. The decision to use a specific implant and the surgical technique must be based on sound medical judgment by the surgeon that takes into consideration factors such as the circumstances and configuration of the injury.