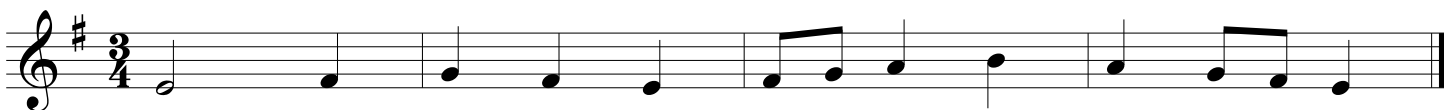


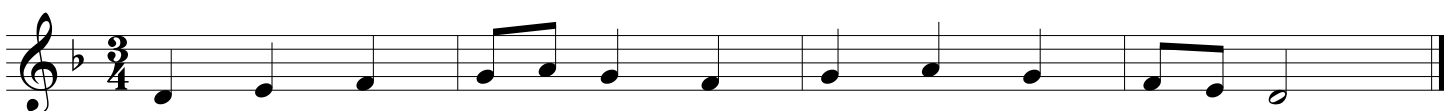
GMEA All State Chorus Sight Reading

Middle School Soprano

2001-02



2002-03



2003-04



GMEA All State Chorus Sight Reading

Middle School Soprano

2004-05



2005-06



2006-07



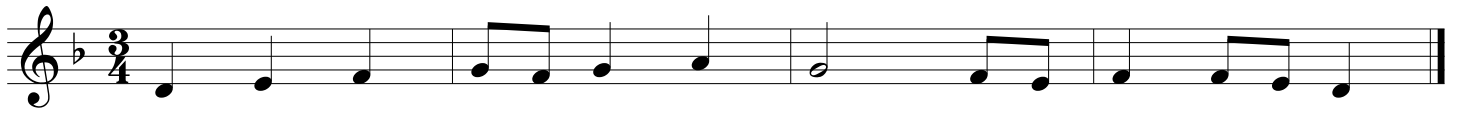
GMEA All State Chorus Sight Reading

Middle School Soprano

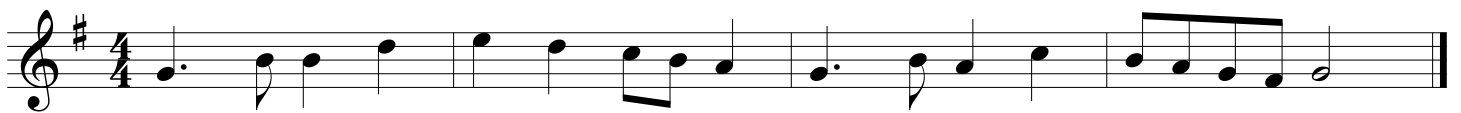
2007-08



2008-09



2009-10



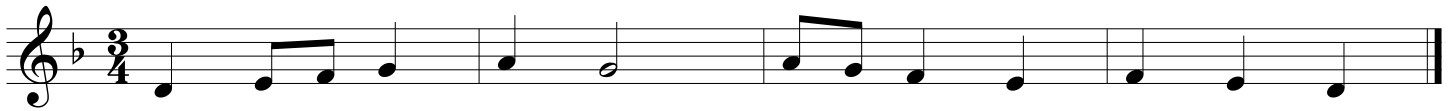
GMEA All State Chorus Sight Reading

Middle School Soprano

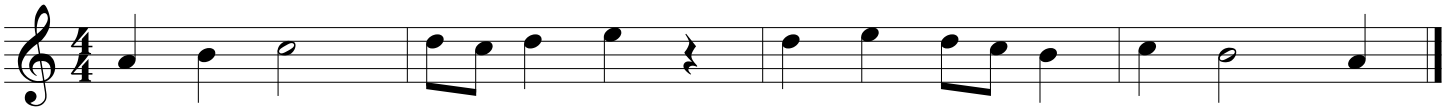
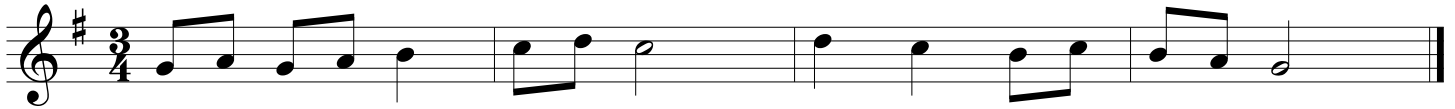
2010-11



2011-12



2012-13



GMEA All State Chorus Sight Reading

Middle School Soprano

2013-14



Three staves of musical notation for the 2013-14 piece. The first staff is in G major (one sharp) and 4/4 time, starting with a quarter rest followed by quarter notes G, A, B, C, D, E, F, G. The second staff is in D major (two sharps) and 4/4 time, starting with a quarter rest followed by quarter notes D, E, F#, G, A, B, C, D. The third staff is in F# major (three sharps) and 4/4 time, starting with a quarter rest followed by quarter notes F#, G, A, B, C, D, E, F#.

2014-15



Three staves of musical notation for the 2014-15 piece. The first staff is in D major (two sharps) and 4/4 time, starting with a quarter rest followed by quarter notes D, E, F#, G, A, B, C, D. The second staff is in D major (two sharps) and 4/4 time, starting with a quarter rest followed by quarter notes D, E, F#, G, A, B, C, D. The third staff is in D major (two sharps) and 4/4 time, starting with a quarter rest followed by quarter notes D, E, F#, G, A, B, C, D.

2015-16



Three staves of musical notation for the 2015-16 piece. The first staff is in D major (two sharps) and 4/4 time, starting with a quarter rest followed by quarter notes D, E, F#, G, A, B, C, D. The second staff is in D major (two sharps) and 4/4 time, starting with a quarter rest followed by quarter notes D, E, F#, G, A, B, C, D. The third staff is in G major (one sharp) and 4/4 time, starting with a quarter rest followed by quarter notes G, A, B, C, D, E, F, G.

GMEA All State Chorus Sight Reading

Middle School Soprano

2016-17

Three staves of musical notation for the 2016-17 exercise. The first staff is in G major (one sharp) and 4/4 time, starting with a treble clef and a key signature of one sharp. The second staff is in C major (no sharps or flats) and 4/4 time, starting with a treble clef. The third staff is in D major (two sharps) and 4/4 time, starting with a treble clef. Each staff contains a single line of music with various note values and rests, ending with a double bar line.

2017-18

Three staves of musical notation for the 2017-18 exercise. The first staff is in C major (no sharps or flats) and 4/4 time, starting with a treble clef. The second staff is in D major (two sharps) and 4/4 time, starting with a treble clef. The third staff is in D major (two sharps) and 4/4 time, starting with a treble clef. Each staff contains a single line of music with various note values and rests, ending with a double bar line.