

WHITTLEY CLUB QLD

BRIBIE ISLAND TO CALOUNDRA PASSAGE TRIP

17/02/23 – 19/02/23

Co-Ordinators: Jon and Kim Heales

Hi Captains and Crew,

Overview – Friday BBQ and prep; Saturday Skippers Canal to Caloundra via the Passage; Sunday Return.

Here are the details and some important info for the upcoming Bribie Island Trip. Note that it is subject to weather and confirmation of the route as a result of our reconnoitre closer to the event. Plan B will be an overnight at Mission Point if there is bad news from the recce.

Friday Earlybirds: For those who wish to arrive Friday and attend the BBQ, you are welcome to moor at our pontoon, this is first in, best position, last year's record was 6 boats. All others can anchor in The Basin near the Marina at Pacific Harbour, Banksia beach, and tender around the corner to our place for a sausage sizzle. Alternatively, if you arrive late or prefer to launch Saturday, you can park boats and trailers across the road from our place on the vacant lot. Everyone is most welcome just please let us know and we'll give you the address via a PM. Don't forget to bring your togs for a swim in the pool or spa. Alternatively, you may wish to moor at Bongaree or elsewhere in the passage and enjoy the local fare.

Saturday Departure: The plan at this stage is to meet in the Bribie passage opposite the entrance to Pacific Harbour (also known as Dux creek or Skippers Canal) about 1Nm north of the Bribie Island VMR at **8:00**. The passage to Caloundra becomes very narrow and shallow about halfway through so we need to go through the narrows, skids, and W's (the shallow parts) at high tide. High tide there is approximately 90 mins after high tide at Bongaree (which is at 8:30). So, we need to traverse the Narrows, the Skids, and W's before 10.00 on a rising tide. We should leave Pacific Harbour around 8:30 to allow plenty of time to get to Mission Point.

There is some great scenery along the route with impressive views of the Glasshouse mountains. We plan to have lunch at the Pelican Waters Tavern, mooring in their basin. For those with Fur buddies, we recommend the Lions Park across the passage on Bribie. Weather permitting, we plan to have Pizzas on the beach at Lions Park (or close by) and anchor for the night. Bad weather alternative will likely be Bells Creek. We'll order Pizzas for dinner (own cost and pickup at the Golden Beach Public Boat Ramp jetty). Alternatively, dine aboard.

Sunday departure for the return back down the passage will be around 8.30. For those who want to return on the ocean side of Bribie they are welcome to do so. Please be directed by, and follow advice from the Caloundra Coastguard (VHF 16 and 73). They are happy to provide coverage over the bar.

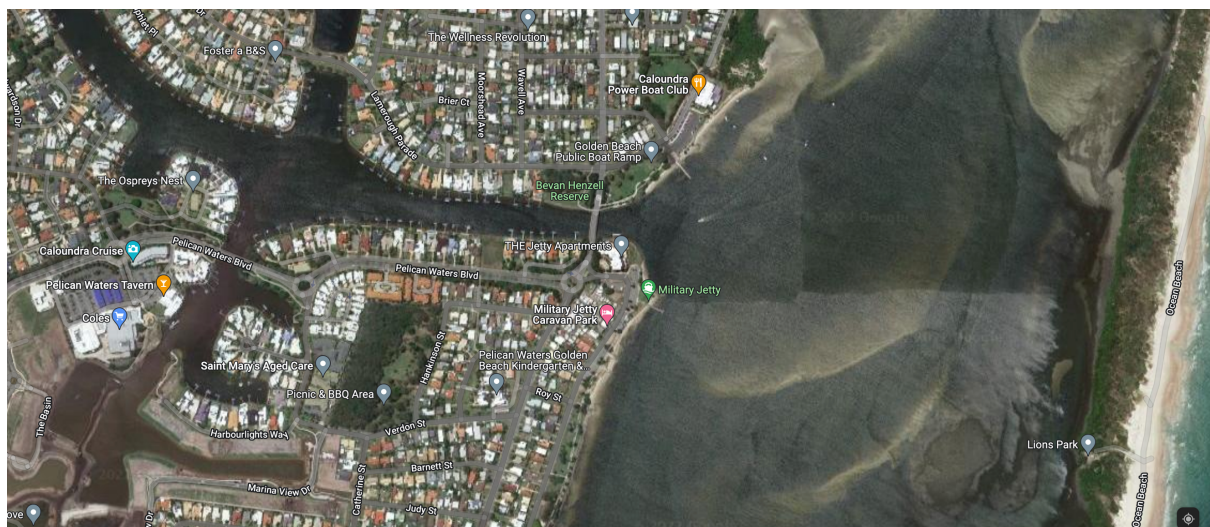
Sunday lunch will be at Bongaree beach. Some great take-away fish and chips is recommended from Saviges Seafood (3/12 First Ave, Bongaree) a short walk from the beach. There are plenty of other alternatives.

Maps:

Here is our meeting point for Saturday morning. Note the marina in Skippers Canal where you can moor in the The Basin on Friday night.



Caloundra Pelican Waters and Lions Park Beach on Bribie:



Launch Facilities

There are a few different options for this trip. If the weather forecast is around 10-15 knots then Scarborough area is ideal as Bribie is a quick skip across Deception Bay. There are 2 public ramps, one at VMR and one next to the Moreton Bay Boat Club.

Closer to Bribie, Spinnaker Sound Marina is also an option which is located on the left a couple of kilometres before the Bribie Bridge. This has a sandy beach adjacent the ramp which is ideal for those not experienced in pontoon manoeuvres at busy boat ramps (it is very sheltered, but has no pontoon). It is also only a few minutes' cruise to the Sandy Point Hotel as well. Alternatively, launch at the VMR on Bribie Is. It has a good pontoon and two ramps, but can be challenging with adverse wind and tidal flow.

Tides

Tides will have a high around mid-morning and low tide into the evening.

Here are Bribe Island, Caloundra, and Brisbane Bar tide times, expect the tide difference to be up to half an hour later for Mission point as we head further up Pumicestone passage.

<

Navionics Routes:

I have prepared three Navionics routings that I'll put up on Facebook for downloading and attachment to emails.

Name	From	To	Nautical Miles (Nm)
Bribie Passage 1	Home (Pacific Harbour)	Mission Point	11.3
Bribie Passage 2	Mission Point	The Skids	8.0
Bribie Passage 3	The Skids	Pelecan Waters	6.9
		Total	26.2 Nm.

Points to Note:

This area has many sandbanks, pay particular attention to your charts or chart plotter, and depth sounder when navigating this area. Also if you're travelling from Caloundra on the ocean side on the Sunday, make sure you contact the Caloundra Coast Guard for coverage.

Changes to Bribie Passage and the north of Bribie Island: As you may have heard, the storms in December 2020 have cut a path through the north of Bribie, dividing the island (just where we had last year's Pizza on the beach!). We plan to do a recce of the area closer to the trip to evaluate the state of the island and cut through. So, please note this plan is subject to change depending on the outcome of our recce.

Remember there are three types of boaties.

- 1. Those that have run aground (ask some of the guys from last trip!)**
- 2. Those that haven't (all of us!)**
- 3. Those that have but won't admit it! (ask the guys from point 2 again!)**

Bring the aeroguard or Mozzie coils for Saturday night as bities may be (that's a strong maybe) present.

Monitor radio on Channel **VHF 72**.

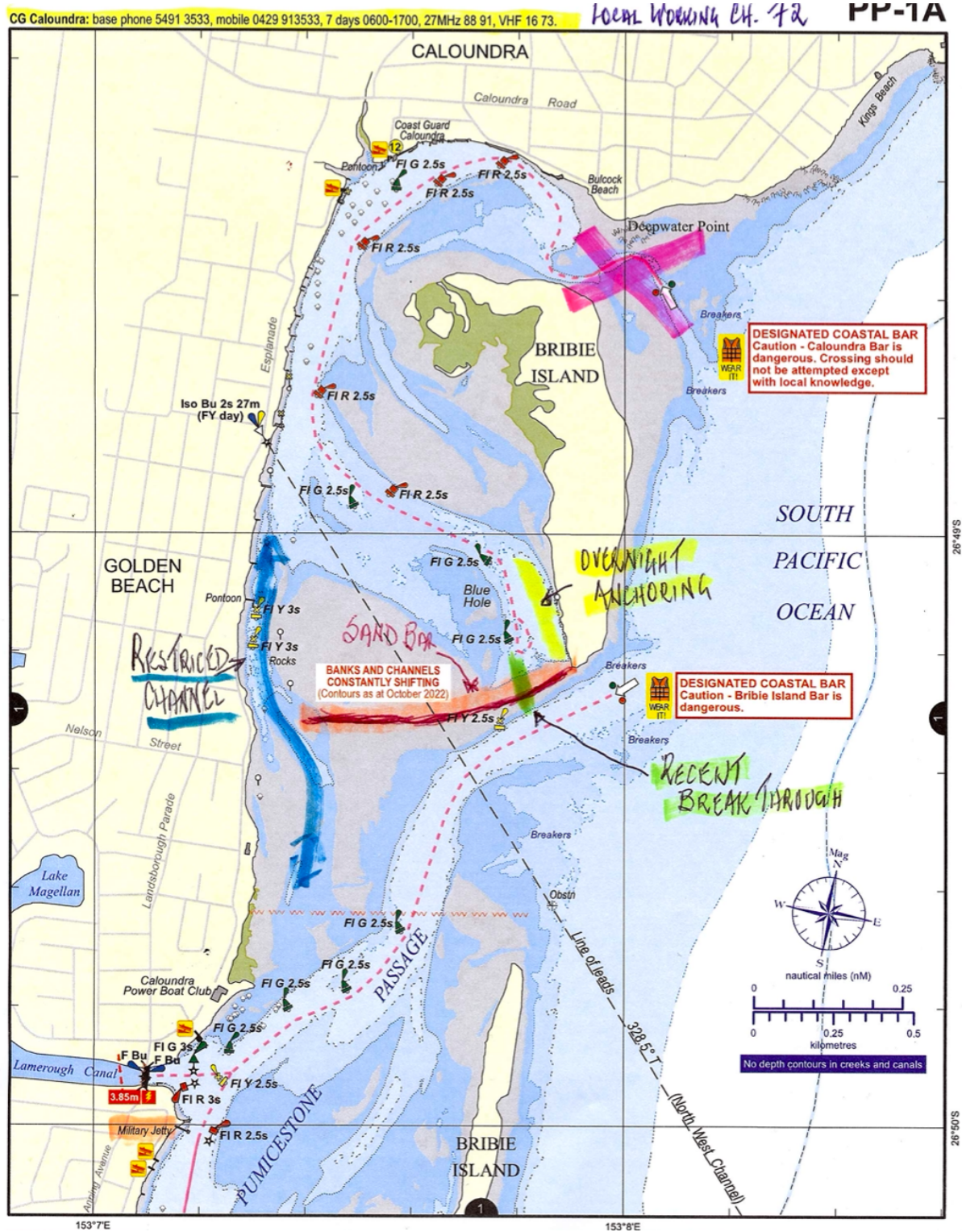
Bribie VMR and Caloundra Coastguard are on VHF 16 and 73.

My mobile number is 0400 240 402 for those wanting to reach me off radio.

Hope to see you there!!

Jon and Kim

Bribie Cut through as a result of the storms!! This is courtesy of Caloundra Coastguard.



The Skids Tide Times and Heights

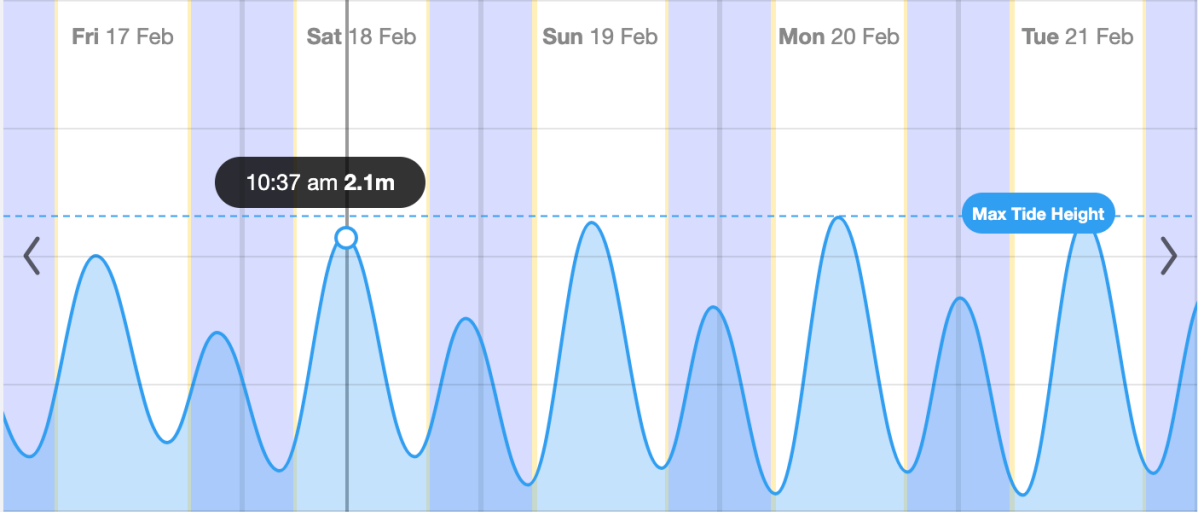
Australia / QLD / Sunshine Coast / 📍



- 1-Day
- 3-Day
- 5-Day



Tide Height



FRI 17 Feb	SAT 18 Feb	SUN 19 Feb	MON 20 Feb	TUE 21 Feb	WED 22 Feb
<div>▼ 2:38 am 0.43m</div>	<div>▼ 3:46 am 0.32m</div>	<div>▼ 4:45 am 0.21m</div>	<div>▼ 5:38 am 0.14m</div>	<div>▲ 12:09 am 1.67m</div>	<div>▲ 12:09 am 1.67m</div>
<div>▲ 9:17 am 2m</div>	<div>▲ 10:16 am 2.15m</div>	<div>▲ 11:07 am 2.26m</div>	<div>▲ 11:55 am 2.3m</div>	<div>▼ 6:28 am 0.13m</div>	<div>▼ 6:28 am 0.13m</div>
<div>▼ 4:28 pm 0.54m</div>	<div>▼ 5:21 pm 0.43m</div>	<div>▼ 6:09 pm 0.34m</div>	<div>▼ 6:53 pm 0.31m</div>	<div>▲ 12:40 pm 2.27m</div>	<div>▲ 12:40 pm 2.27m</div>
<div>▲ 9:29 pm 1.4m</div>	<div>▲ 10:28 pm 1.51m</div>	<div>▲ 11:20 pm 1.6m</div>		<div>▼ 7:35 pm 0.3m</div>	<div>▼ 7:35 pm 0.3m</div>