

# ***Whittley Club Qld – Macintosh Is., Wavebreak Is., Marine Stadium, Budds Beach 18<sup>th</sup>– 20<sup>th</sup> Oct, 2024***

Hi Captains and Crew,

Here is some important info for the upcoming Macintosh Island, Budds Beach, Wavebreak Island, Marine Stadium/ trip:

Co-ordinator – Brian Svensson (0480 175 418), VHF 72. If you are intending on coming along please let either Brian, Jon, or Tim know either by email, [commodore@clubwhittleyqld.org.au](mailto:commodore@clubwhittleyqld.org.au), text or phone, and please answer the invite on our Facebook page. We'll put details of the trip on the trip page's messenger chat as they come to hand, including alternatives.

**Alternative:** The anchorages for this trip are all pretty sheltered, so if boating is out of the question, we'll have lunch on Saturday at ????? (to be decided, see FB trip messenger).

## **Overview**

A trip to Macintosh Island / Budds Beach overnight on Saturday, heading to Marine Stadium on Sunday. Early birds on Friday will be at Wavebreak Island.

## **Earlybird Friday:**

Friday Arrival is an option if you can get time off work, Jon plans to launch SeaDuced at Paradise Point around 13:00, and head to Wavebreak Island to spend the afternoon and evening anchored there for an overnight stay. Brian will be launching BriSandy from Loders Creek Boat ramp (very close to wavebreak Is) around 16:00 Friday. Any newcomers to our club who live on the GC., or who need assistance, he's willing to change launching location to suit their preferences (PM him).

**Happy Hour:** on the beach approximately 4.00 pm, BYO drinks, snacks

**Dinner:** Self catering on boat.

Waypoint: 27° 56.325 S 153° 24.885 E



Wavebreak Island



### **Saturday** – 30<sup>th</sup>: "Macintosh Island"

Meet up at Wave Break Island (swimming, fishing) around 10.30am for a cruise down the Nerang river to Macintosh Island. You might like to take a few deviations through the canals to look at the cheap riverside shacks along the way!! Meet up on the Beach for the usual **Happy Hour** at approximately 4.00 pm in the park followed by dinner. We'll put on a sausage sizzle, but feel free to bring your own as well!

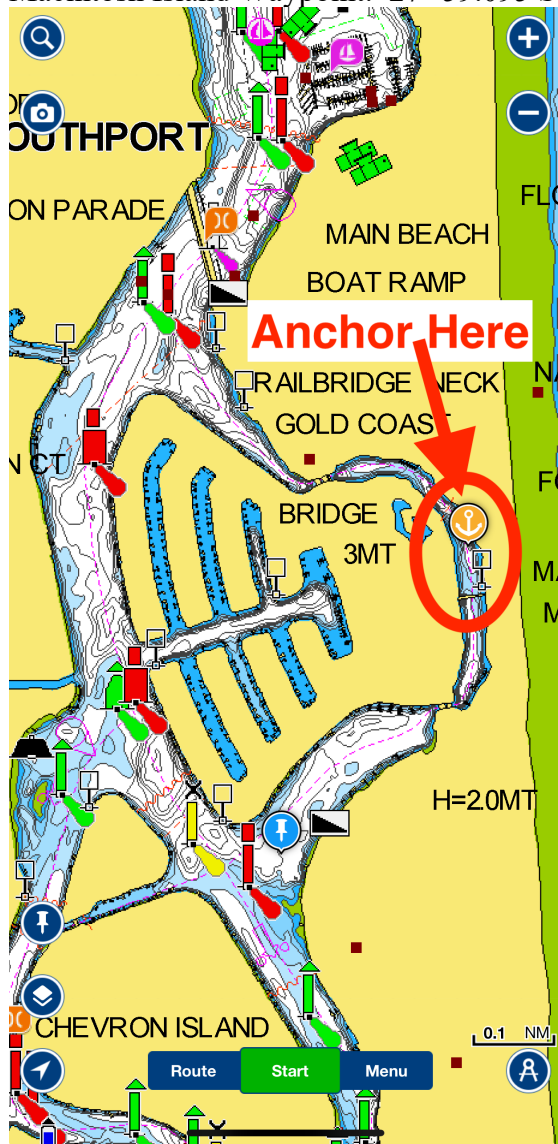
Macintosh Island is a good calm all weather location with a park that has electric BBQ's and a toilet block (no showers). Access to our anchorage is via the Nerang river, under a narrow bridge. Access will be between 10.50am to 13.30pm. An early departure on Sunday is necessary to clear the bridge, between 5.30 – 8.30am.

Macintosh Island Park is a real oasis in the midst of all the glitz and glamour of Main Beach. Surrounded by big shady trees, you'll find a number of playgrounds, cascading streams running through the park, and a bird sanctuary, home to beautiful peacocks roaming through the parklands. For more information see <https://www.goldcoast.qld.gov.au/Things-to-do/Parks-gardens-reserves/Park-Finder/Macintosh-Island-Park>

**Dinner:** Sausage Sizzle + BYO dinner which can be cooked on the BBQ.



Macintosh Island Waypoint: 27° 59.095 S 153° 25.732 E



**Sunday:** – 1<sup>st</sup>: "Marine Stadium"

For those who want, we can meet for coffee/breakfast ashore or head to Bumbles Café for Breaky. Mid morning we'll head to Marine Stadium.

Marine Stadium anchorage gives protection from the winds, surrounded by beach and plenty of shade. There are limited facilities (toilets, no BBQ's). Spend the day swimming, picnic on the beach, or take a walk to the Seaway and see the boats passing in and out through the seaway. Cafe located in the car park of the Spit (there is a toilet at near Café).

Enjoy the Day at Marine Stadium

We'll say "bon voyage" and "au revoir" to those who are leaving to head home.

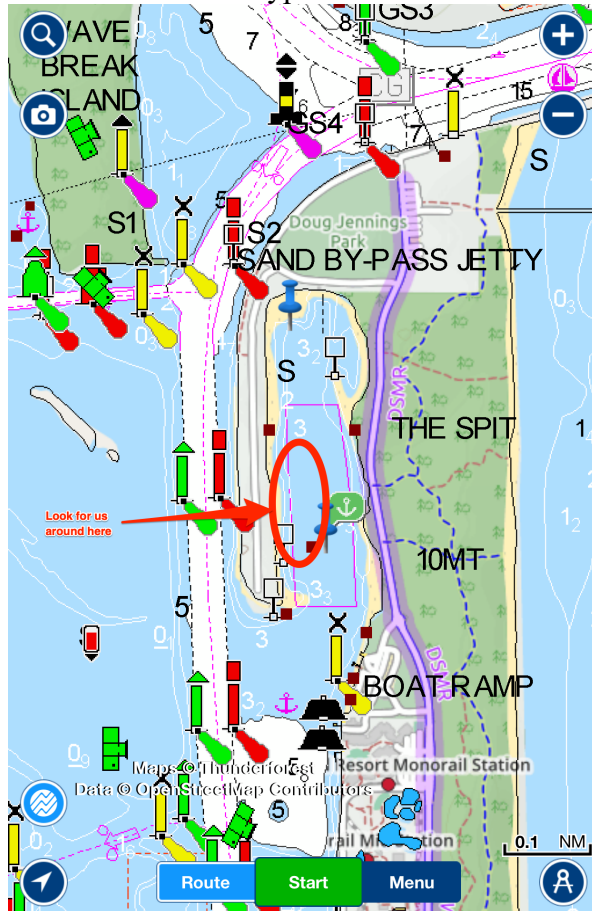
**Happy Hour:** For those staying, Happy Hour on the beach approximately 4.00 pm, BYO drinks, snacks

**Dinner:** Self catering on board or for those who are interested, a Pizza on the Beach. (We will arrange delivery, cost around \$15pp depending on deals).

Waypoint: 27° 56.865 S 153° 25.425 E



Marine Stadium Waypoint: 27° 56.842 S 153° 25.426 E



**Monday – 2<sup>nd</sup> : Depart**

For those staying on till Monday

Enjoy Marine Stadium, or if the weather is favourable, head out through the seaway to see if there are any whales about. Alternatively, you can wet a line!!

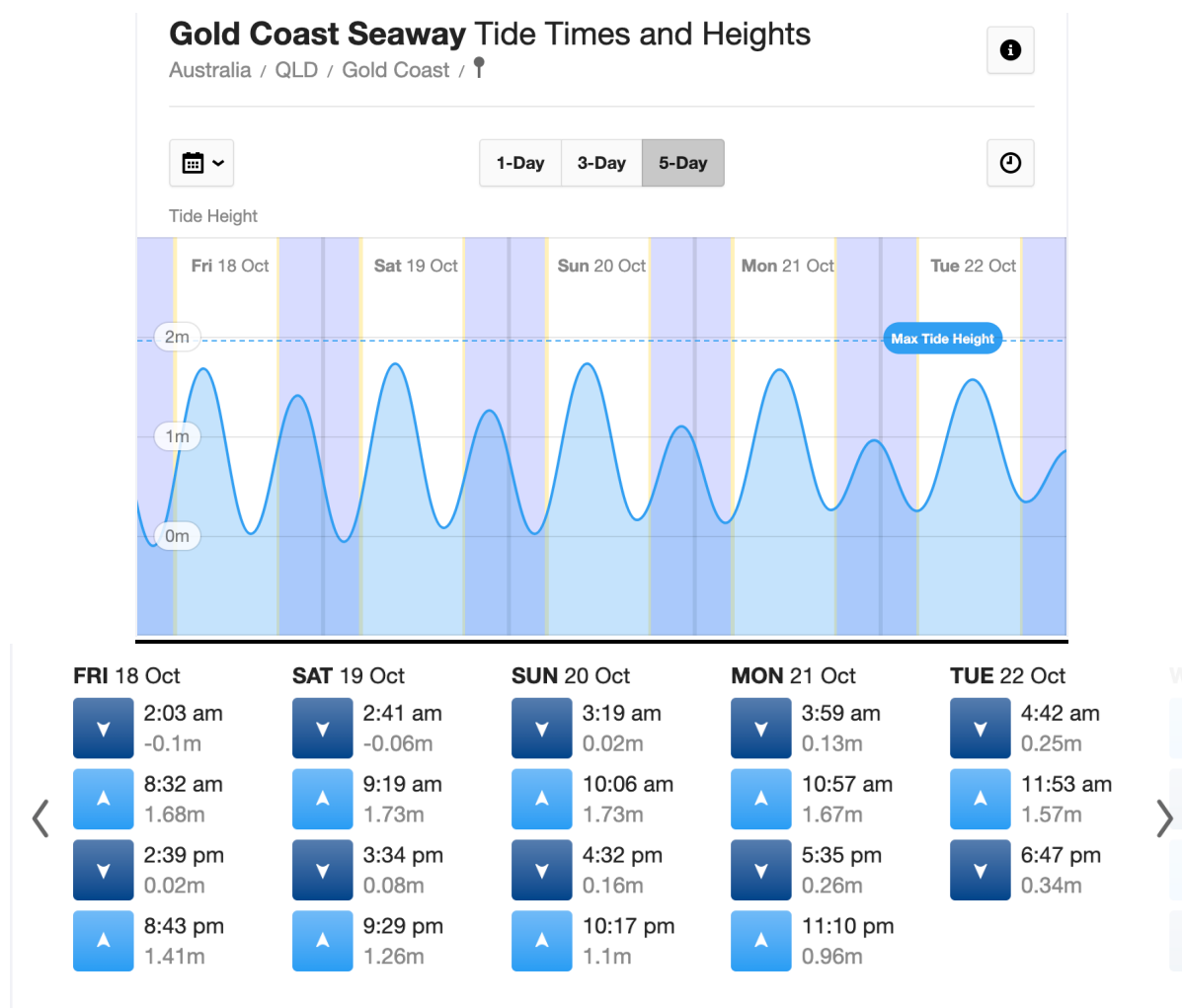
### **Launch Facilities**

There is no organised launching or car and trailer storage for this event. In the past Horizons has been the suggested launching ramp for a \$20 fee. Unfortunately, they have put up their rates to \$25 + \$10 per night after 24 hours. Feel free to launch anywhere that is convenient to yourselves.

On-water fuel is available at Horizons, Southport Yacht Club (Credit Card). Alternatives are Hope Harbour, Runaway Bay, Paradise point (pontoon and plenty of public parking). Cars and trailers have been left overnight at both Paradise Point and Loders Creek (174 Marine Pde) pontoons with no issues reported.

## Tides – Broadwater and Wavebreak Island:

**Tides** will be low Friday at 9:41am so watch the sandbanks on the way over to Wavebreak Island if you are launching early.



## Routing:

Horizon to Budds Beach 18.3Nm.

Wavebreak Is. to Budds Beach 3.7Nm

## Points to Note:

Beware of sandbanks, shallow areas, rocks, markers, and wrecks. It is low tide on Saturday afternoon, so keep an eye on your depth!!

Bring the aeroguard or Mozzie coils for Saturday night as bities may be present.

## Contacts:

Monitor radio on Channel **VHF 72**.

Southport VMR on VHF 16 and 73.

Southport VMR: (07) 5591 2948

## Trip Coordinator

Brian Svensson's mobile is 0480 175 418 and Jon's mobile number is 0400 240 402 for those wanting to reach us off radio. Hope to see you there!!