



| SAT 24 Jan | SUN 25 Jan | MON 26 Jan | TUE 27 Jan | WED 28 Jan |
|---------------------|--------------------|--------------------|---------------------|---------------------|
| ▲ 12:57 am 2.06m | ▲ 1:48 am 2.07m | ▲ 2:48 am 2.09m | ▲ 4:01 am 2.15m | ▲ 5:21 am 2.26m |
| ▼ 6:55 am 0.65m | ▼ 7:48 am 0.77m | ▼ 8:52 am 0.9m | ▼ 10:16 am 0.97m | ▼ 11:52 am 0.95m |
| ▲ 1:05 pm 2.36m | ▲ 1:48 pm 2.2m | ▲ 2:41 pm 2.02m | ▲ 3:53 pm 1.84m | ▲ 5:19 pm 1.75m |
| ▼ 7:45 pm 0.58m | ▼ 8:27 pm 0.59m | ▼ 9:21 pm 0.62m | ▼ 10:26 pm 0.63m | ▼ 11:39 pm 0.61m |

Whittley Club Queensland Peel Island / Little Ships / Australia Day Trip January 24-26th 2026

Hi All,

Please see the following info for the upcoming Australia Day Club Trip.

Saturday 24th

We will launch Bella Vita at Raby Bay at 08:30am which will be about the earliest time to avoid the crowds and the low tide, (06:55am, 0.65m). Meeting up at Horseshoe Bay, Peel Island, for morning swim/ frolic about. We plan to motor over to Deanbilla Bay by late morning. This will be walking distance across to Dunwich village and Straddie brewing Co, where meals and refreshments are available for 12:00 lunch. Please let Michael/ Vanessa know if you wish to attend as bookings are required. Dogs are welcome on a leash. Menu will be posted on the FB site.

Saturday night's anchorage will be at Horseshoe Bay (weather permitting). Dinner is per own arrangements.

Sunday 25th

We will congregate together before travelling across to Little Ship's Club for 12:00 lunch at the bistro with lawn games to follow. We'll anchor and then tender on in to the side jetty. Those without tenders will be ferried across. Booking is essential so as per Straddie brewing Co, please let us know by Friday if you are planning to attend. Dogs on leads are welcome here also.

If lunching on your boat, join us for lawn games from 13:00 onwards.

A Cover band is usually playing from 12:00 until 16:00.

Sunday Night's anchorage will be back at Horseshoe Bay/alternatively plan B will be at LSC.

Expect Sundowners on beach from 16:30, bring something to share. - Dinner is per own arrangements.



Little Ships Club side pontoon entrance

Monday 26th Australia Day



A day of leisure, bring boats into shore, swimming beach walks and games during the day. Whittley Club are supplying a BBQ/sausage sizzle- on the beach from 12:00. BYO Drinks, nibbles etc. Note: All other meals are by own arrangement.

For those wanting to get away on a higher tide, we will say good bye. High tide (14:41pm, 2.01m)

Points to Note:

- Don't forget the Aeroguard insect spray and some slip, slop, slap sunscreen.
- Enough fuel for journey and a little extra (should be 30%) for a safety factor.
- Something 'Aussie' to help celebrate Australia Day ...YAY!!
- Usual beach furniture- folding chair etc.
- Both venue booking menus will also be available via the trip chat.

Any queries, please contact me.

Michael Magrath (Bella Vita)
Whittley Club Queensland
Mobile 0402 933400 / VHF Chanel 72

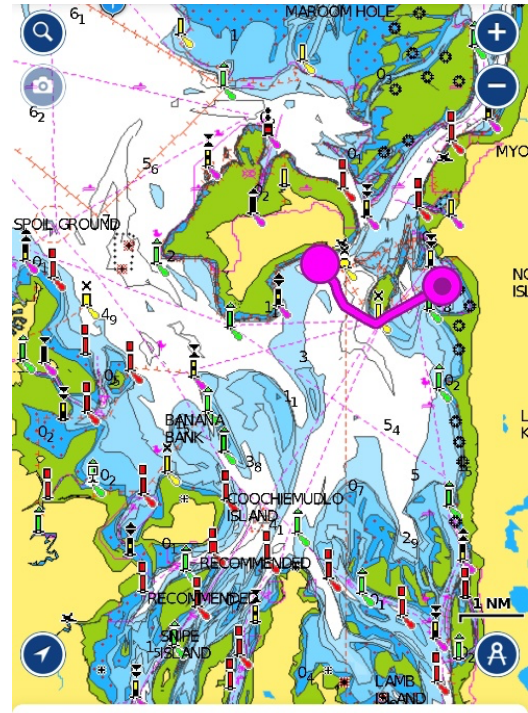
Extra Handy Boating Info

Approx one-way journey times and fuel usage



| Length | Time | Fuel |
|--------|---------|-------|
| 7.8NM | 31m 07s | 11.9L |

Raby Bay/ Peel/ Little ships Club



| Length | Time | Fuel |
|--------|--------|------|
| 2.4NM | 9m 38s | 3.7L |

Peel/ Deanbilla