

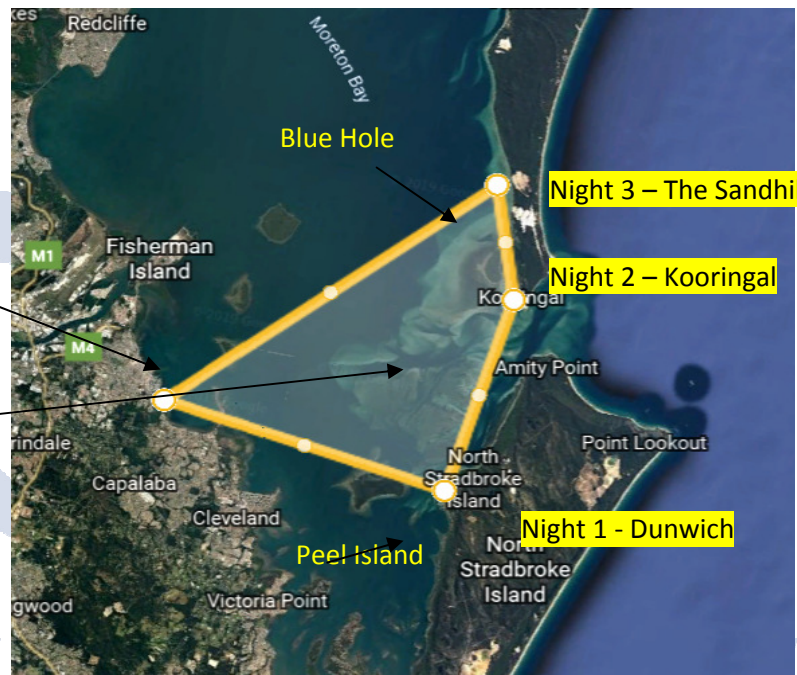
# Club Whittley – Koorinal

## April 19 / 20 / 21 Easter 2019

... Another Kim & Tony adventure...

### Overview

We'd figured that the lower bay may be crowded at Easter, so we've chosen Koorinal at the bottom tip of Moreton Island as the centre point for our excursion. It's Famous for clear water, turtles, dugong, starfish and of course, dolphins. It's Easter so there are big tides, with the High tide being 9:00am and again at 9:22pm on the Friday. Koorinal is an adventure – because it can only be safely accessed by the bigger boats on the top half of tide.



Start– Manly (optional)

Night 3 – The Sandhills

Night 2 – Koorinal

Night 1 - Dunwich

There are massive sandbanks in Moreton Bay, particularly around the Rous Channel, which runs between North Stradbroke Island and Moreton Island. You are guaranteed to might see heaps of turtles and dugongs. For this reason, many of these sandbanks are regulated as “go-slow zones” to avoid propeller and hull strikes on these slow moving marine animals. The “go-slow zones” extend to either a two-metre or five-metre depth contour depending upon location.

The “Little” and “Big” Sand Hills towards the southern end of Moreton Island are a highlight. If you have time, walk across the narrowest part of Moreton Island at the Little Sand Hills, which is only two kilometres across. Just make sure you bring heaps of drinking water with you (and a camera!).

### The ITINERARY

Launch – your choice Manly or Raby Bay or even Horizon Shores. All familiar places. Phone me if you are new and want a little more information. We're launching from Manly at the ramp near MBTBC (Moreton Bay Trailer Boat Club)

#### Friday

Make your own way in your own time – may be stop at Peel for a swim.

The overnight anchorage will be at Adams Beach, Deanbilla Bay – in the town of Dunwich just south of the sand mining jetty. Somewhere different? With an easy walk to the Pub and the shops for extra provision. A nice sandy beach for Happy Hour. At 3:30 pm with beach games. No fixed plans for the evening. (plans will change if there's a Westerly)

## Saturday

Leave Early at 9:00am to make the run to Koorinal on the high tide. The entrance to Days Gutter is very tricky at low tide – phone if you're going to be late. Koorinal is a good all weather anchorage.

Lunch – at the legendary 'Gutter Bar'(it will be a falling tide)

Happy Hour at 3:30pm – it's low tide – so Happy Hour will be on the big sand bar – More beach Games.

**Sunday-** our plans will be subject to weather.

Leave Early at 9:00 am to make the run north to the Sandhills (between Koorinal and Tangalooma).

The inside channel is very shallow but should be fine at the high tide. We'll stop at the famous Blue Hole for a spot of fishing, it's about 7 M deep and fully surrounded by sandbars.

Depending on the Weather - We'll move up to the Sandhills for lunch and possible Overnight anchorage. This Anchorage should be fine if there's any wind with an Easterly component.

If the wind has a westerly component – we will return from Blue Hole to Koorinal at lunch – while the tide is still good. (The decision to return to Koorinal early is to avoid having to do the long round trip back through the Rous channel when the tide is low. This is an option though)

Happy Hour will be at 3:30pm – somewhere. No food or drink options on this day – self-catering.

### Points to Note:

This area has many sandbanks, pay particular attention to your charts or chart plotter when navigating this area particularly during the lower tides. Remember the go slow areas.

Bring the Aero Guard or Mozzie coils for Saturday night as bities may be present.

Fuel - - this trip is about 80km – there are no fuel options.

Monitor radio on Channel **VHF 72**.

Tony's mobile number is 0423 904 635 and Kim's is 0414 336 346 for those wanting to reach us off radio. Tony plans to do some late night crabbing and fishing from the tender.

**Kim and Tony Pullen**

**Trip Co-ordinators**

**Club Whittley Qld**



## Tide Times – Brisbane Bar

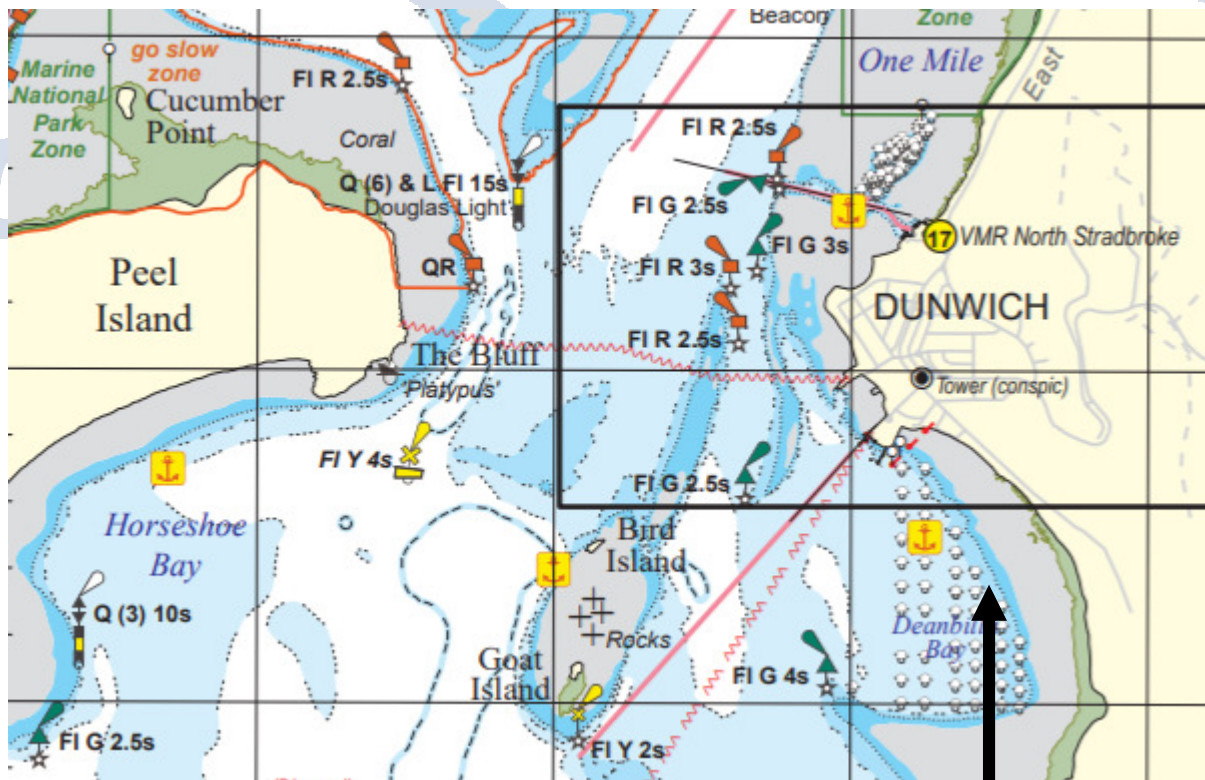
<https://www.msq.qld.gov.au/Tides/Tide-Tables>

<b>19</b>	0328	0.36
	0922	2.42
FR	1551	0.30
○	2153	2.48
<b>20</b>	0416	0.37
	1004	2.32
SA	1626	0.32
	2235	2.51
<b>21</b>	0501	0.43
	1044	2.19
SU	1659	0.36
	2316	2.50
<b>22</b>	0545	0.52
	1124	2.04
MO	1731	0.44
	2356	2.44

## Extracts from Beacon to Beacon

downloads available from <https://www.msq.qld.gov.au/Boating-maps/Moreton-Bay-guides>

### NIGHT 1 - Deanbilla Bay / Dunwich



Night 1

NIGHT 2 – Koorringal / Days Gutter



Night 2