

Your Water News Resource

Cottonwood
Water & Sanitation District

Get Ready for Spring With Garden-in-a-Box

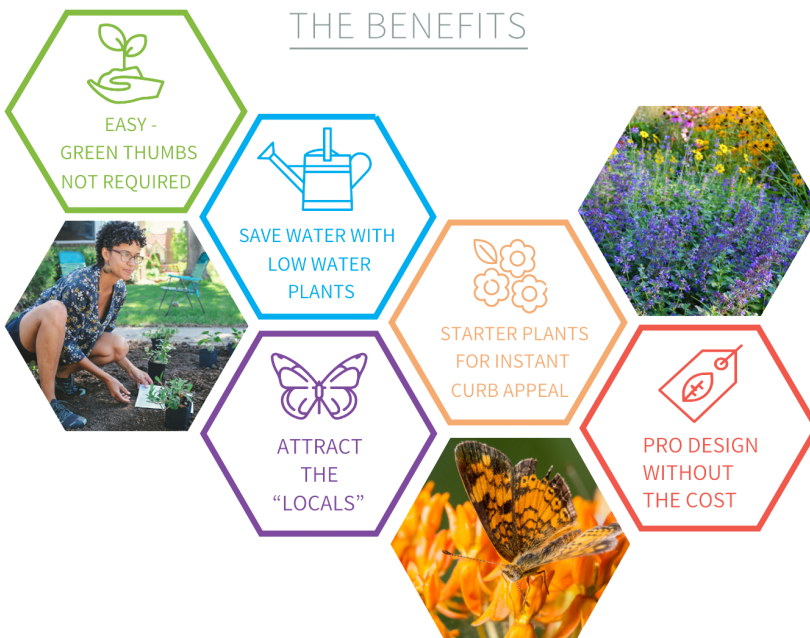
Get ready for the 2025 Garden-in-a-Box program from Resource Central! This popular initiative makes water-wise gardening simple with professionally designed kits that include drought-tolerant plants, detailed planting maps, and easy-to-follow care instructions. With a variety of styles available, each kit features native plants that support local pollinators like bees and butterflies.

These kits sell out fast! Join the interest list today using the website or QR code below to be notified when they go on sale.

Cottonwood Water and Sanitation District customers can receive a \$75 rebate on a Garden-in-a-Box purchase, up to a total of \$5,000 in rebates (2 rebates max per household). Act quickly—funds are limited and available on a first-come, first-served basis!

Learn more at resourcecentral.org/gardens or scan the QR code.

GARDEN IN A BOX THE BENEFITS



Next Meeting of the Board:

Thursday, February 20, 2025

8334 Sandreed Circle, Parker CO

The Public is Invited to Attend



2025 Rate Increase

As of January 1, 2025, the new rates for water usage are effective. This will be reflected on this bill. The tables below show the change in rates.

Remember, your water usage from December-March determines your winter average, so conserve water now to keep your water bills lower through the whole year.

Table 1

Tier:	Water Use Fees			Wastewater Use Fees		
	2024 Water Service Fee Per 1,000 Gallons	2025 Water Service Fee Per 1,000 Gallons	Percentage of Yr to Yr Increase	2024 Sewer Service Fee Per 1,000 Gallons	2025 Sewer Service Fee Per 1,000 Gallons	Percentage of Year to Year Increase
Conserving: Use up to 100% of Allocation	\$4.72	\$4.86	3.00%	\$9.10	\$9.38	3.00%
Excessive: Use exceeds the Conserving tier, up to 150%	\$9.43	\$9.72				
Abusive: Use exceeds the Excessive tier	\$14.15	\$14.57				

Table 2

Water & Wastewater Base Fees

	2024		2025		Percentage of Yr to Yr Increase	
	Water	Sewer	Water	Sewer	Water	Sewer
Base Fee	\$22.48	\$15.30	\$23.05	\$15.68	2.50%	2.50%

Table 3

Wastewater Allocation

Sewer Allocation per Winter Average Use	Min. Allocation for Accounts W/ a Winter Average Use < 1,000 Gal.	Min. Allocation for Accounts W/O a Winter Average Use (Winter Period 2023 - 2024)
Average Water Use Dec. 24 - March 25 & Effective in April '25	1,000 Gal/Mo	District's Winter Average (Dec. '23 - Mar. '24): <u>4,050 Gal/Mo</u> *

*To be updated w/ District's 2024-2025 Winter Average



What is a Winter Average and how is it used?

Your winter average is determined from an average of water consumption records from December-March.

The purpose of this calculation is to identify indoor use averages that can be applied year round, especially during the summer when irrigation is occurring. This average is calculated each March to be used for the next 12 months.

It's important that you keep an eye out for leaks, running toilets, and dripping faucets during these months to make certain your winter average stays low to keep your fees at a minimum for the rest of the year. To see your water usage data and set up leak detection for your home, we highly recommend signing up for EyeOnWater. This service is free for you to use and will help you understand your water use trends and is accessible through an app on your smart device or your computer web browser. With EyeOnWater, you can access all of your water use data in a variety of intervals such as by month, day, or even down to 15-minute intervals. You can set up alerts to notify you of potential leaks or over usage. To sign up for EyeOnWater, use the link on our website at www.cottonwoodwater.org.



58 Inverness Drive East #100

Englewood, CO 80112

Open 8am-5pm Monday-Friday

During normal business hours call:

303-792-9509

After-Hours Water Emergencies:

303-426-3167

Visit Our Website:

www.cottonwoodwater.org