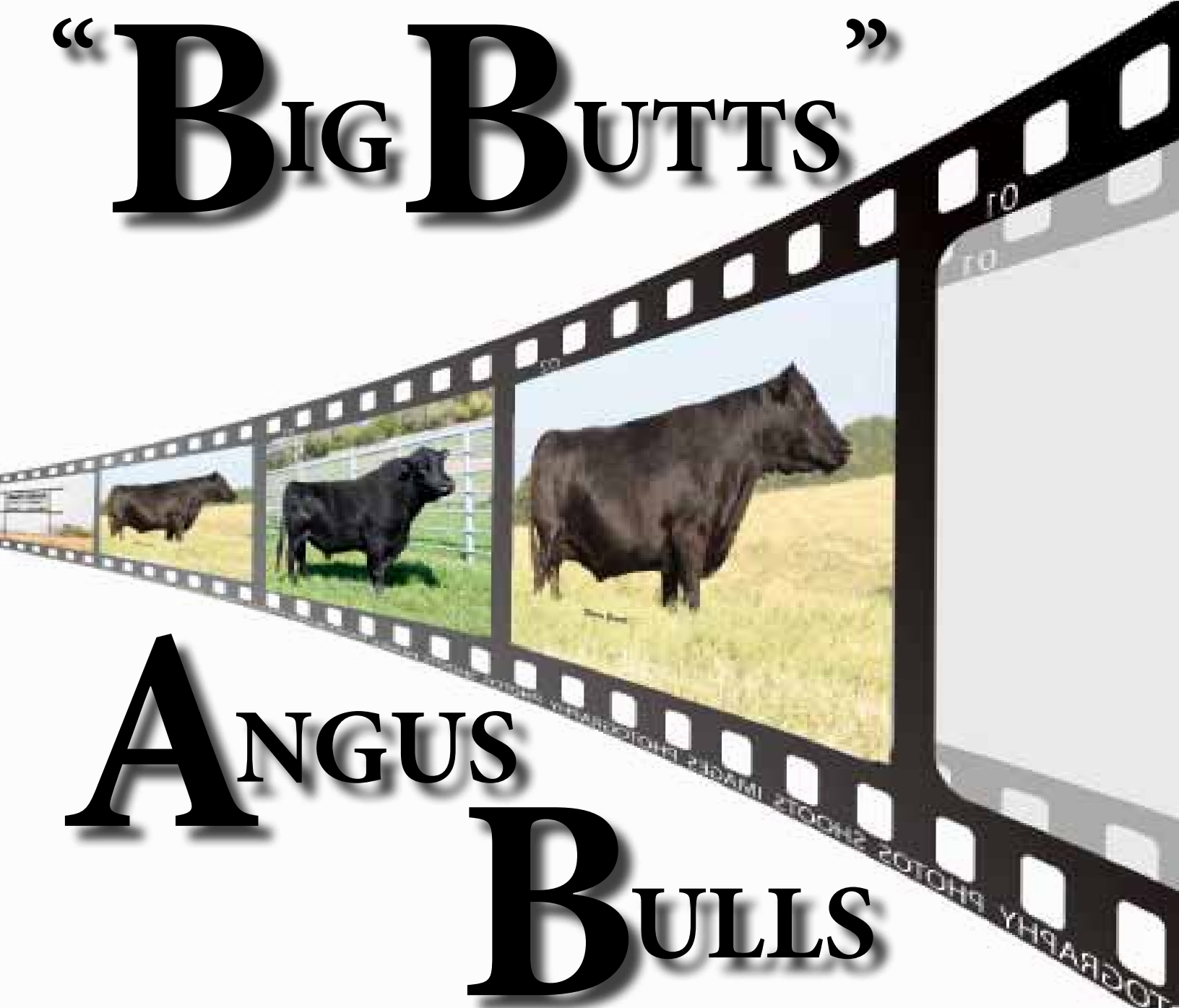


Lesikar Ranch  
& 1860 Farms  
presents

# “BIG BUTTS”



# ANGUS BULLS

3RD HERD BULL SALE ANNUAL

SATURDAY, NOVEMBER 10, 2018 • 1:00 PM

AT THE RANCH NEAR ATHENS, TEXAS



**Harriet & Lyn Lesikar**



**Katie, Jason, Luke & Savannah Lesikar**



**Maria & Martin Lopez  
Athens Manager**



**Ana & Jacinto Nunez  
Poolville Herdsman**

## Lesikar Ranch

A TEXAS TRADITION SINCE 1960

Dear Angus Friends and Fellow Cattlemen,

We would like to take this opportunity to welcome you back to Lesikar Ranch and invite you to attend the 3rd "Big Butts" Bull Sale being held at our Athens Ranch on Saturday, November 10, 2018. The cattle will be available for viewing by appointment before the Sale and all day on Friday, November 9. We will begin by serving a homemade Tamale Lunch at noon, followed by our sale starting at 1:00 pm.

As we are entering the start of a new breeding season, what better time to procure a bull than right when you need it. The bulls that we are offering are ready to be turned out and start breeding immediately. They are Range Ready and can handle any soil condition.

Our genetics are moderate framed, cost efficient, thick and deep. The efficiency of these bulls requires less feed to keep them in shape and for maintenance. Our herd bulls return to the pen in the same condition that they were when they went to pasture to breed for the season. We have integrated a lot of the Ohlde Cattle Company Genetics into our herd to help create these special type of cattle. We pride ourselves on actually having balanced traits and not chasing after 1 or 2 traits. These cattle are what Angus should be and will work like they were meant to. These genetics not only give you the opportunity to retain replacements, but to also to send to a feedlot and make money there.

The top 2 questions that are asked by breeders looking at our bulls, will they work on heifers and how is their docility. Most of our bulls will work on heifers, while still giving the ability for the calf to grow and develop into an outstanding animal. When it comes to docility, we pride ourselves in this trait. The bulls we develop are all docile and that is why we guarantee and stand behind it 100%. What other Ranch is willing to give this guarantee?

We want to express our sincere gratitude to Martin Lopez, Athens Manager and Jacinto Nunez, Poolville Herdsman. Our entire breeding program, along with this sale, would not be possible without all of their hard work and dedication.

Lesikar Ranch is a family ranch with family values. Please bring your family and join ours for a full weekend of fun!

We look forward to seeing you!

*Jason Lesikar*

## Lesikar Ranch

**Jason Lesikar 817-726-7998**

**Office 817-738-2177**

**Lyn & Harriet Lesikar**

**PO Box 121788, Fort Worth Texas 76121**

**[www.lesikarranch.com](http://www.lesikarranch.com)**



# 1860 Farms

Dear Angus Friends and Fellow Cattlemen,

Before the Civil War, before Abraham Lincoln and before the Pony Express made it's first ride, we were farming and ranching on the same piece of land right here in Northeast Texas. Deeded to us by the Great Sam Houston in 1860, over 7 generations of family have kept the dream of working with the land as their most cherished gift to pass on to the next generation. This land has provided a good living for us even in the toughest of times. Today we are returning even more resources back into the land through cover crops, rotational grazing and improved poly-cultures. These farming and ranching practices return nutrients back into the soil that has worked so hard for us over the last 158 years.

Over the next 25 years, we are concentrating on breeding and raising Registered Angus Cattle for seed stock, breeding stock, starter herds, yearling genetics and herd bulls. We play both sides of the fence, chasing the EPD's of Calving Ease Direct (CED), Weaning Weight (WW), Yearling Weight (YW) and Dollar Beef Value (\$B). While we also develop animals that excel in "Grassfed Beef" genetics. These "Grassfed Beef" genetics can provide more performance on a grass and forage diet where Calving Ease Direct (CED), Marbling (MARB), Yearling Weight (YW) and Cow Energy Value (\$EN) are extremely important to ranchers finishing out on natural forage.

Thanks,

*Britt Ross and the Ross Family  
Patty, Lauren, Michael and Sarah*



**Britt & Patty Ross**



**Michael & Britt Ross**



**Patty, Sarah & Britt Ross**



**Hank**



**Britt Ross 214-478-6446  
2830 Marcie Lane  
Rockwall, Texas 75032  
www.1860farms.com**



# 3RD HERD BULL SALE

## SATURDAY, NOVEMBER 10, 2018 • 1:00 PM

### AT THE RANCH NEAR ATHENS, TEXAS

Over 115 Angus Bulls:  
16 mos - 2 year olds  
24 pairs, bred and open heifers

#### AUCTIONEER:



**Jerry Lehmann** 573-999-4759

#### SALE DAY PHONES:

**Jason Lesikar** 817-726-7998  
**Britt Ross** 214-478-6446  
**Katie Lesikar** 817-797-8115  
**Patty Ross** 214-502-1976

#### LIVESTOCK PRESS:

**Radale Tiner**, *Angus Journal* 979-492-2663  
**Phil Stoll**, *Weekly Livestock Reporter* 817-366-7332  
**Greg Goodson**, *Weekly Livestock Reporter* 903-388-2544  
**Shawn McCoy**, *The Cattleman* 817-929-8597  
**Bret Griffith**, *Southern Livestock Standard* 830-719-3163  
**Tom Lester**, *On Assignment* 903-654-1265

If you wish to make purchases but are unable to attend the sale, please contact Lesikar Ranch, 1860 Farms, auctioneer or livestock press representatives to make arrangements.

#### SALE LOCATION:

**Lesikar Ranch**  
12121 CR 3903, Athens, TX 75752  
*See map on back cover*

#### VOLUME BULL DISCOUNT:

5 or more bulls - 5%

#### FIRST BREEDING SEASON GUARANTEE:

We offer a full breeding season guarantee for any injury that would keep the bull from being a breeder for the first breeding season. If a problem occurs, we will give you a suitable replacement or you will receive full credit, minus the salvage value of the original bull, toward another purchase in next year's sale. The bulls have passed a breeding soundness exam. We require that you notify the seller of the bull in case of injury. We also reserve the right to a second opinion by a veterinarian of our choice. In the situation where we need to bring the bull back to the ranch for our vet to examine, it's the buyer's responsibility to get the bull back to our ranch at their expense. We will pay to have our vet examine the bull again, if he passes the exam, it's the buyer's responsibility to come pick up the bull at our ranch at their expense.

#### FOOD AND REFRESHMENTS:

Join us at noon on Saturday for an authentic home-made tamale lunch.

#### TERMS & CONDITIONS:

All cattle are to be settled for on sale day, prior to load out, unless prior arrangements have been made. Terms of the sale are cash or check. The cattle sell under the Terms and Conditions of the American Angus Association. Supplements to the sale book and announcements made from the block take precedence over what is written in the sale book.

#### TRUCKING:

All Bulls need to be loaded out after the sale. If you need to make special arrangements, please contact Jason Lesikar.

#### HERD HEALTH:

All cattle will be accompanied by proper health certificates for immediate shipment. All Bulls have been Trich Tested and 100% Virgin Bulls.

#### INSPECTION OF SALE CATTLE:

Bulls and Females can be inspected at any time at Lesikar Ranch starting on Thursday, November 8. Contact for viewing Jason Lesikar 817-726-7998 or Britt Ross 214-478-6446.

#### LIABILITY:

All persons attending the sale and related functions do so at their own risk. Lesikar Ranch, 1860 Farms, and sale staff assume no liability, legal or otherwise, for any accidents or injuries that may occur.

#### ACCOMMODATIONS:

**Holiday Inn** 903-675-2500  
**Best Western** 903-292-1750  
*Please call to reserve rooms early.*

#### AIR TRAVEL:

Lesikar Ranch is 1.5 hours from Dallas/Fort Worth International Airport.

#### VIEW ON THE INTERNET:

All Cattle have been recorded and the video is available for viewing on the Lesikar Ranch YouTube Channel.

See page 25 for the instructions.

#### DOCILITY GUARANTEE:

We pride ourselves in the docility of our bulls and therefore offer a guarantee on docility. Should the bull become "crazy" in the pens, run at you or from you at any time acting wild, we will give you a suitable replacement or you will receive full credit, minus the salvage value of the original bull, toward another purchase in next year's sale. We don't do crazy and neither should you.

*EPDs current as of 10/08/2018.*

# 2 Year Old Bulls



## Lot 1 - Lesikar Paxton D203

### 1 Lesikar Paxton D203

Birth Date: 9/5/2016 Bull 18895537 Tattoo: D203

O C C Focus 813F  
**O C C Paxton 730P**  
 14940735 [AMF-CAF-D2F-DDF-M1F-NHF-OHF-OSF]

O C C Blackbird 736K

O C C Practical 841P

**Lesikar Barbara B562**  
 18114400

Lesikar Barbara X116

Basin Rainmaker 654X  
 Dixie Erica of C H 1019

O C C Great Plains 943G

O C C Blackbird 824G

O C C Focus 813F

O C C Juanada 968G

O C C Emblazon 854E

Sedgwicks Barbara 087

CED	BW	WW	YW	SC	MILK	SEN			
15	-2.1	35	56		15	18.11			
CWT	5	MARB	0.29	RE	0.32	\$W	30.47	\$B	37.98
		<b>Act. BW</b>	<b>47</b>	<b>Act. WW</b>	<b>420</b>	<b>Act. YW</b>	<b>520</b>		

Ranked in the Top: 2% CED, 3% BW and 3% SEN

What a great way to start off this sale. Lot 1 is a spectacular Bull bringing in some extremely powerful genetics and blood lines into the mix. His Sire is O C C Paxton who brings an enormous amount of power to his offspring. His Dam, Lesikar Barbara B562, stems from the Foundation Donor of the Lesikar Program, Sedgwicks Barbara 087. Her offspring and bloodline have great growth, grass efficiency, maternal instinct, docility, length and muscling. 087 has even produced 2 AI Sires that we collect and sell Semen on. The Sire of Lot 1's Dam, O C C Practical is another great Bull from the Ohlde Herd. His calves have always been some of the more spectacular offspring raised for our Program. This bull will bring genetics to your herd that will help you out whether you are retaining and replacing females or sending your calves to the feedlot.



# 2 Year Old Bulls



## Lot 2 - Lesikar Paxton D766

What a great way to follow Lot 1, with another spectacular Bull, Lot 2. He also is bringing in some extremely powerful genetics and blood lines into the mix. His Sire is O C C Paxton who brings an enormous amount of power to his offspring. His Dam, Lesikar Blackcap Y939, stems from the Foundation Donor of the Lesikar Program, A Plus Blackcap 0037. Her offspring and bloodline have growth, muscling, grass efficiency, maternal traits and instinct, docility and good structure. 0037 goes back to the great G A R Scotch Cap 867 Cow which has been the foundation for many great foundation donors for ranching operations all over the U. S. 0037 has produced several great herd sires along with Lesikar Impact W601, whom we collect and sell semen from. She stems from N Bar Emulation EXT which is one of the great genetics used by many for maternal traits. The Sire of Lot 2's Dam, Jauer 353 Traveler 589 27 is used to promote growth while not trading in any of the genetics that we covet for our program. He has been used on the Foundation Donors to provide what we would call raw power and strength. What a great opportunity to add a tremendous set of genetics by bringing in Paxton, Jauer 589 and EXT into your herd in one nicely wrapped up package.

### 2 Lesikar Paxton D766

Birth Date: 9/17/2016 Bull 18895544 Tattoo: D766

O C C Focus 813F  
**O C C Paxton 730P**  
 14940735 [AMF-CAF-D2F-DDF-M1F-NHF-OHF-OSF]  
 O C C Blackbird 736K

Basin Rainmaker 654X  
 Dixie Erica of C H 1019  
 O C C Great Plains 943G  
 O C C Blackbird 824G

Jauer 353 Traveler 589 27

Jauer 7111 Traveler 353 719

**Lesikar Blackcap Y939**  
 17172860

Jauer 6807 Traveler 27 085  
 N Bar Emulation EXT  
 G A R Scotch Cap 867

A Plus Blackcap 0037

CED	BW	WW	YW	SC	MILK	SEN			
7	1.1	52	83	0.63	20	-0.07			
CWT	25	MARB	0.26	RE	0.62	\$W	45.98	\$B	85.44
Act. BW		68	Act. WW		710	Act. YW		825	

### 3 Lesikar Paxton D226

Birth Date: 11/21/2016 Bull 18895540 Tattoo: D226

O C C Focus 813F  
**O C C Paxton 730P**  
 14940735 [AMF-CAF-D2F-DDF-M1F-NHF-OHF-OSF]  
 O C C Blackbird 736K

Basin Rainmaker 654X  
 Dixie Erica of C H 1019  
 O C C Great Plains 943G  
 O C C Blackbird 824G

O C C Rancher 680R

O C C Emblazon 854E

**Lesikar Primrose B542**  
 17876860

O C C Juanada 775C  
 O C C Emblazon 854E  
 TF Primrose 8303

Lesikar Primrose X133

CED	BW	WW	YW	SC	MILK	SEN			
13	-1.1	36	61		17	13.44			
CWT	3	MARB	0.17	RE	0.43	\$W	30.74	\$B	30.16
Act. BW		53	Act. WW		400	Act. YW			

Ranked in the Top: 10% CED, 10% BW, 5% \$EN and 10% \$YG

# 2 Year Old Bulls

## 4 Lesikar Rancher D743

Birth Date: 8/29/2016 Bull 18895569 Tattoo: D743

O C C Emblazon 854E  
**O C C Rancher 680R**  
15289755

O C C Juanada 775C

D H D Traveler 6807

**Lesikar Erica X773**  
16871964 [M1F-OSF]

Twin Eagles Erica 668K

D H D Traveler 6807  
Dixie Erica of C H 1019  
N Bar Emulation EXT  
O C C Juanada 709V

Q A S Traveler 23-4  
Bemindful Maid D H D 0807  
Papa Durabull 9805  
G A R New Trend 838

CED	BW	WW	YW	SC	MILK	SEN			
7	1.3	33	52	-0.03	20	13.37			
CWT	10	MARB	0.22	RE	0.23	\$W	29.35	\$B	43.47
		Act. BW	69	Act. WW	685	Act. YW	735		

Ranked in the Top: 5% \$EN

## 5 Lesikar Rancher D754

Birth Date: 9/4/2016 Bull 18895567 Tattoo: D754

O C C Emblazon 854E  
**O C C Rancher 680R**  
15289755

O C C Juanada 775C

O C C Jet Stream 825J

**Lesikar Blackcap Z953**  
17175074

G A R Objective 1765

D H D Traveler 6807  
Dixie Erica of C H 1019  
N Bar Emulation EXT  
O C C Juanada 709V

O C C Emblazon 854E  
O C C Juanada 968G  
S S Objective T510 0T26  
G A R 1407 New Design 2453

CED	BW	WW	YW	SC	MILK	SEN			
6	1.5	42	69	-0.28	20	6.1			
CWT	5	MARB	0.39	RE	0.24	\$W	35.86	\$B	44.58
		Act. BW	69	Act. WW	660	Act. YW	675		

Ranked in the Top: 15% \$EN

## 6 Lesikar Rancher D780

Birth Date: 9/29/2016 Bull 19220440 Tattoo: D780

O C C Emblazon 854E  
**O C C Rancher 680R**  
15289755

O C C Juanada 775C

S S Objective T510 0T26

**Lesikar Queenie W454**  
16327081

Premium Gold Queenie 302R

D H D Traveler 6807  
Dixie Erica of C H 1019  
N Bar Emulation EXT  
O C C Juanada 709V

S S Traveler 6807 T510  
S S Miss Rita R011 7R8  
BR Midland  
G A R Ext 916

CED	BW	WW	YW	SC	MILK	SEN			
10	0.2	42	70	0.01	19	6.97			
CWT	14	MARB	0.57	RE	0.31	\$W	36.5	\$B	71.84
		Act. BW	65	Act. WW		Act. YW			

Ranked in the Top: 20% CED and 15% \$EN

## 7 Lesikar Rancher D213

Birth Date: 9/30/2016 Bull 18895568 Tattoo: D213

O C C Emblazon 854E  
**O C C Rancher 680R**  
15289755

O C C Juanada 775C

S A V 8180 Traveler 004

**Lesikar Blackcap Y203**  
17169411

Twin Eagles Blackcap 418P

D H D Traveler 6807  
Dixie Erica of C H 1019  
N Bar Emulation EXT  
O C C Juanada 709V

Sitz Traveler 8180  
Boyd Forever Lady 8003  
Rito 616 of 4B20 6807  
P A B Blackcap 920

CED	BW	WW	YW	SC	MILK	SEN		
13	-1.9	24	45		16	21.46		
CWT		MARB		RE	\$W	18.44	\$B	
		Act. BW	47	Act. WW	345	Act. YW		

Ranked in the Top: 10% CED, 4% BW and 2% \$EN

## 8 Lesikar Rancher D798D

Birth Date: 10/15/2016 Bull 18899557 Tattoo: D798D

O C C Emblazon 854E  
**O C C Rancher 680R**  
15289755

O C C Juanada 775C

O C C Missing Link 830M

**Lesikar Blackcap Y938**  
17175142

G A R Objective 1765

D H D Traveler 6807  
Dixie Erica of C H 1019  
N Bar Emulation EXT  
O C C Juanada 709V

O C C Headliner 661H  
O C C Dixie Erica 946K  
S S Objective T510 0T26  
G A R 1407 New Design 2453

CED	BW	WW	YW	SC	MILK	SEN			
8	0.5	28	50	-0.04	18	16.82			
CWT	-9	MARB	0.26	RE	0.19	\$W	21.41	\$B	6.28
		Act. BW	67	Act. WW	460	Act. YW	600		

Ranked in the Top: 4% \$EN and 15% \$YG



### Lot 8 - Lesikar Rancher D798D

Not every Bull wants to pose for his picture, but look at the power and muscling in his front shoulders. Look at the butt of this Bull, this is what we pride ourselves on having, "BIG BUTTS".



# 2 Year Old Bulls

## 9 Lesikar Practical D730

Birth Date: 8/18/2016 Bull 18895563 Tattoo: D730

O C C Focus 813F Basin Rainmaker 654X  
 Dixie Erica of C H 1019  
**O C C Practical 841P**  
 15269772 O C C Eureka 865E  
 O C C Juanada 968G O C C Juanada 774A  
 Lesikar Emblazon W604 O C C Emblazon 854E  
**Lesikar Evergreen B349**  
 17818662 A Plus Blackcap 0037  
 GDAR SVF Traveler 234D  
 L A R Miss Evergreen L12 MA 4112 of 833 727

CED	BW	WW	YW	SC	MILK	SEN			
10	0.6	34	65	0.15	14	15.51			
CWT	6	MARB	0.31	RE	0.15	\$W	19.97	\$B	41.22
		Act. BW	57	Act. WW	560	Act. YW	775		

Ranked Top 4% \$EN and 20% CED

## 10 Lesikar Broadside D735

Birth Date: 8/23/2016 Bull 18895527 Tattoo: D735

D H D Traveler 6807 Q A S Traveler 23-4  
**O C C Broadside 876B**  
 11952559 [CAF-DDF-M1F-OHF] Bemindful Maid D H D 0807  
 PBC 707 1M F0203  
 Revolution Rose of R R 9239 Revolution Rose of R R 4064  
 O C C Glory 950G O C C Exodus 712E  
**Lesikar Queenie Z178**  
 17573998 O C C Dixie Erica 971E  
 Sitz Alliance 6595  
 Twin Eagles Queenie 500P G A R Ext 916

CED	BW	WW	YW	SC	MILK	SEN			
7	1.8	38	67	0.47	19	8.27			
CWT	20	MARB	0.17	RE	0.25	\$W	28.44	\$B	63.94
		Act. BW	66	Act. WW	685	Act. YW	800		

Ranked in the Top: 10% \$EN

## 11 Lesikar Practical D733

Birth Date: 8/20/2016 Bull 18895558 Tattoo: D733

O C C Focus 813F Basin Rainmaker 654X  
 Dixie Erica of C H 1019  
**O C C Practical 841P**  
 15269772 O C C Eureka 865E  
 O C C Juanada 968G O C C Juanada 774A  
 Lesikar Impact W601 O C C Emblazon 854E  
**Lesikar Racquel A326**  
 17843421 A Plus Blackcap 0037  
 Connealy All Around  
 Lesikar Racquel W845 J&J 1680 Racquel 534

CED	BW	WW	YW	SC	MILK	SEN			
11	0.2	41	78	0.76	17	6.04			
CWT	22	MARB	0.4	RE	0.41	\$W	29.29	\$B	84.13
		Act. BW	60	Act. WW	610	Act. YW	860		

Ranked in the Top: 15% CED, and 15% \$EN

## 12 Lesikar Broadside D738

Birth Date: 8/26/2016 Bull 18895528 Tattoo: D738

D H D Traveler 6807 Q A S Traveler 23-4  
**O C C Broadside 876B**  
 11952559 [CAF-DDF-M1F-OHF] Bemindful Maid D H D 0807  
 PBC 707 1M F0203  
 Revolution Rose of R R 9239 Revolution Rose of R R 4064  
 O C C Paxton 730P O C C Focus 813F  
**Lesikar Blackcap Y838**  
 17175216 O C C Blackbird 736K  
 B C Marathon 7022  
 Lesikar Blackcap U730 HA Blackcap 1137

CED	BW	WW	YW	SC	MILK	SEN			
8	1.5	36	64	-0.12	15	14.69			
CWT	10	MARB	0.06	RE	0.31	\$W	23.2	\$B	39.32
		Act. BW	68	Act. WW	635	Act. YW	800		

Ranked in the Top: 5% \$EN and 15% \$YG

## 13 Lesikar Broadside D212

Birth Date: 9/11/2016 Bull 18895525 Tattoo: D212

D H D Traveler 6807 Q A S Traveler 23-4  
**O C C Broadside 876B**  
 11952559 [CAF-DDF-M1F-OHF] Bemindful Maid D H D 0807  
 PBC 707 1M F0203  
 Revolution Rose of R R 9239 Revolution Rose of R R 4064  
 O C C Jupiter 671J O C C Emblazon 854E  
**Lesikar Primrose Z365**  
 17574021 O C C Dixie Erica 816B  
 Twin Valley Precision E161  
 TF Roth Primrose 8646 B A A R Roth Primrose 096 CV

CED	BW	WW	YW	SC	MILK	SEN			
10	0.8	35	62		16	14.28			
CWT	10	MARB	0.04	RE	0.29	\$W	24.78	\$B	36.67
		Act. BW	65	Act. WW	450	Act. YW			

Ranked in the Top: 5% \$EN and 20% CED

## 14 Lesikar Big Time D758

Birth Date: 9/8/2016 Bull 19028863 Tattoo: D758

O C C Rear End 751R O C C Homer 650H  
**O C C Big Time 746Z**  
 17696450 FCC Revolution Rose 995N  
 O C C Missing Link 830M  
 O C C Dixie Erica 771R O C C Dixie Erica 776M  
 BR Midland Twin Valley Precision E161  
**L A R Barbara R360**  
 15352264 BR Royal Lass 7036-19  
 O C C Backstop 888B  
 Sedgwicks Barbara 087 Sedgwicks Barbara 4171

CED	BW	WW	YW	SC	MILK	SEN			
1	3.6	58	101	1.08	15	-1.79			
CWT	29	MARB	0.38	RE	0.47	\$W	33.91	\$B	103.75
		Act. BW	67	Act. WW	635	Act. YW	800		

## Lot 14 Lesikar Big Time D758





# 2 Year Old Bulls

## 15 Lesikar Big Time D806 [DDP-M1P]

Birth Date: 10/29/2016 Bull 18895763 Tattoo: D806

O C C Rear End 751R  
**O C C Big Time 746Z**  
 17696450

O C C Dixie Erica 771R

L A R Bando 1002

**LAR Juana R290**

15068018 [DDP-M1P]

LAR Juana L22

O C C Homer 650H  
 FCC Revolution Rose 995N  
 O C C Missing Link 830M  
 O C C Dixie Erica 776M

Tehama Bando 155  
 C J Erica Eileen of T W 167  
 Bon View New Design 878  
 Twin Eagles Juana 184J

CED	BW	WW	YW	SC	MILK	SEN			
0	3.3	52	84	1.12	20	-0.51			
CWT	37	MARB	0.28	RE	0.55	\$W	38.8	\$B	110.76
Act. BW		70	Act. WW		750	Act. YW		825	



## Lot 15 - Lesikar Big Time D806

## 16 Lesikar Anchor D812D

Birth Date: 10/31/2016 Bull 19065918 Tattoo: D812D

D H D Traveler 6807  
**O C C Anchor 771A**  
 11684971 [CAF-DDF-M1F-OHF]

O C C Juanada 709V

L A R Bando 1002

**LAR Evergreen R301**

15079082

LAR Evergreen L31

Q A S Traveler 23-4  
 Bemindful Maid D H D 0807  
 Cole Creek Oscar 92R  
 Juanada of Rollin Rock 0355

Tehama Bando 155  
 C J Erica Eileen of T W 167  
 N Bar Emulation EXT  
 M A 9356 of 618 Maximum

CED	BW	WW	YW	SC	MILK	SEN			
5	1.8	24	37	-0.42	13	29.98			
CWT	6	MARB	0.26	RE	0.23	\$W	13.66	\$B	46.73
Act. BW		69	Act. WW		610	Act. YW		650	

Ranked in the Top: 1% SEN, 1% DMI and 15% SYG

## 17 Lesikar Thumper D746

Birth Date: 8/29/2016 Bull 18895596 Tattoo: D746

O C C Eureka 865E  
**O C C Thumper 819T**  
 16293203 [M1F]

O C C Dixie Erica 954K

O C C Jet Stream 825J

**Lesikar Pride Y929**

17175075

LAR Pride P270

O C C Backstop 888B  
 Blackbird of R R 1204  
 O C C Anchor 771A  
 O C C Dixie Erica 907C

O C C Emblazon 854E  
 O C C Juanada 968G  
 Scotch Cap  
 M A 6127 of 9352 Ext

CED	BW	WW	YW	SC	MILK	SEN			
2	3.1	44	69	0.61	20	6.1			
CWT	28	MARB	0.25	RE	0.2	\$W	33.66	\$B	81.62
Act. BW		69	Act. WW		710	Act. YW		800	

Ranked in the Top: 15% SEN

## 18 Lesikar Practical D208

Birth Date: 9/13/2016 Bull 18895559 Tattoo: D208

O C C Focus 813F  
**O C C Practical 841P**  
 15269772

O C C Juanada 968G

O C C Paxton 730P

**Lesikar Blackcap B534**

17820949

Lesikar Blackcap Z291

Basin Rainmaker 654X  
 Dixie Erica of C H 1019  
 O C C Eureka 865E  
 O C C Juanada 774A

O C C Focus 813F  
 O C C Blackbird 736K  
 O C C Jupiter 671J  
 Lesikar Blackcap U424

CED	BW	WW	YW	SC	MILK	SEN			
14	-1.6	38	64		13	17.19			
CWT	8	MARB	0.3	RE	0.2	\$W	28.81	\$B	45.21
Act. BW		47	Act. WW		450	Act. YW			

Ranked in the Top: 4% CED, 5% BW and 3% SEN

## 19 Lesikar Absolute D753

Birth Date: 9/3/2016 Bull 18899548 Tattoo: D753

S A V Final Answer 0035  
**K C F Bennett Absolute**  
 16430795 [AMF-CAF-D2F-DDF-M1F-NHF-OHF]

Thomas Miss Lucy 5152

S S Objective T510 0T26

**G A R Objective 1765**

15129446 [AMF-DDF-NHF]

G A R 1407 New Design 2453

Sitz Traveler 8180  
 S A V Emulous 8145  
 Wulffs Ext 6106  
 Thomas Miss Lucy 3050

S S Traveler 6807 T510  
 S S Miss Rita R011 7R8  
 Bon View New Design 1407  
 G A R Precision 4529

CED	BW	WW	YW	SC	MILK	SEN			
11	-0.5	52	93	0.73	19	2.37			
CWT	20	MARB	0.72	RE	0.53	\$W	48.54	\$B	93.95
Act. BW		64	Act. WW		635	Act. YW		800	

Ranked in the Top: 15% CED, 15% BW, and 20% SEN

## 20 Lesikar Absolute D757

Birth Date: 9/5/2016 Bull 18899550 Tattoo: D757

S A V Final Answer 0035  
**K C F Bennett Absolute**  
 16430795 [AMF-CAF-D2F-DDF-M1F-NHF-OHF]

Thomas Miss Lucy 5152

S S Objective T510 0T26

**G A R Objective 1765**

15129446 [AMF-DDF-NHF]

G A R 1407 New Design 2453

Sitz Traveler 8180  
 S A V Emulous 8145  
 Wulffs Ext 6106  
 Thomas Miss Lucy 3050

S S Traveler 6807 T510  
 S S Miss Rita R011 7R8  
 Bon View New Design 1407  
 G A R Precision 4529

CED	BW	WW	YW	SC	MILK	SEN			
11	-0.5	52	93	0.47	19	2.37			
CWT	24	MARB	0.82	RE	0.38	\$W	48.54	\$B	103.17
Act. BW		69	Act. WW		735	Act. YW		800	

Ranked in the Top: 15% CED, 20% SEN and 15% BW

## 21 Lesikar Impact D725

Birth Date: 8/8/2016 Bull 19000155 Tattoo: D725

O C C Emblazon 854E  
**Lesikar Impact W601**  
 16663828

A Plus Blackcap 0037

G A R Predestined

**Lesikar Rita U350**

16323328 [AMF-DDF]

Twin Lakes 444L Rita 615

D H D Traveler 6807  
 Dixie Erica of C H 1019  
 N Bar Emulation EXT  
 G A R Scotch Cap 867

B/R New Design 036  
 G A R Ext 4206  
 G A R Precision 1680  
 Whitestone Rita 444L

CED	BW	WW	YW	SC	MILK	SEN			
8	2.2	46	88		19	-1			
CWT	27	MARB	0.47	RE	0.42	\$W	30.38	\$B	98.92
Act. BW		64	Act. WW		635	Act. YW		800	

# 2 Year Old Bulls

## 22 Lesikar Impact D742 [DDP]

Birth Date: 8/27/2016 Bull 18891966 Tattoo: D742

O C C Emblazon 854E

D H D Traveler 6807

### Lesikar Impact W601

16663828

A Plus Blackcap 0037

Dixie Erica of C H 1019  
N Bar Emulation EXT  
G A R Scotch Cap 867

Rito 2V1 of 2536 1407

Bon View New Design 1407

### Lesikar Erica T664

15881597 [DDC-AMF-M1F-OSF]

Twin Eagles Erica 668K

G A R Precision 2536  
Papa Durabull 9805  
G A R New Trend 838

CED	BW	WW	YW	SC	MILK	SEN			
8	1.6	45	84	1.04	19	3.32			
CWT	30	MARB	0.12	RE	0.53	SW	35.12	SB	92.11
		Act. BW	68	Act. WW	660	Act. YW	875		

Ranked in the Top: 20% \$EN

## 24 Lesikar Rebound D761

Birth Date: 9/13/2016 Bull 18891968 Tattoo: D761

O C C Emblazon 854E

D H D Traveler 6807

### Lesikar Rebound X931

16663820

Sedgwicks Barbara 087

Dixie Erica of C H 1019  
O C C Backstop 888B  
Sedgwicks Barbara 4171

Lesikar Impact W601

O C C Emblazon 854E

### Lesikar Erica B364

17863008

Lesikar Erica U726

A Plus Blackcap 0037  
Twin Valley Precision E161  
Twin Eagles Erica 668K

CED	BW	WW	YW	SC	MILK	SEN			
8	1.5	33	64	0.08	14	15.94			
CWT	11	MARB	0.02	RE	0.37	SW	17.32	SB	37.51
		Act. BW	63	Act. WW	500	Act. YW	675		

Ranked in the Top: 4% \$EN

## 26 Lesikar Emblazon D689

Birth Date: 2/5/2016 Bull 18514330 Tattoo: D689

O C C Emblazon 854E

D H D Traveler 6807

### Lesikar Emblazon W604

16663831

A Plus Blackcap 0037

Dixie Erica of C H 1019  
N Bar Emulation EXT  
G A R Scotch Cap 867

Connealy Thunder

Baldrige Kaboom K243 KCF

### Lesikar Blackcap X656

16871842

Lesikar Blackcap U730

Parka of Conanga 241  
B C Marathon 7022  
HA Blackcap 1137

CED	BW	WW	YW	SC	MILK	SEN			
9	0.9	54	87	-0.07	17	5.71			
CWT	26	MARB	0.25	RE	0.35	SW	48.12	SB	90.39
		Act. BW	69	Act. WW	600	Act. YW	625		

Ranked in the Top: 15% \$EN

## 28 Lesikar Paxton 720D [DDP-M1P]

Birth Date: 4/28/2016 Bull 18514103 Tattoo: 720D

O C C Paxton 730P

O C C Focus 813F

### Lesikar Paxton Z305

17289419

Lesikar Barbara X933

O C C Blackbird 736K  
O C C Emblazon 854E  
Sedgwicks Barbara 087

G A R Predestined

B/R New Design 036

### Lesikar Juana Z334

17573647 [DDP-M1P]

Lesikar Juana U791

G A R Ext 4206  
ALC Big Eye D09N  
Lesikar Juana S512

CED	BW	WW	YW	SC	MILK	SEN			
7	2.2	40	72		26	-3.26			
CWT	22	MARB	0.61	RE	0.47	SW	34.95	SB	90.95
		Act. BW	62	Act. WW	625	Act. YW			

## 23 Lesikar Impact D762 [DDP]

Birth Date: 9/13/2016 Bull 18891969 Tattoo: D762

O C C Emblazon 854E

D H D Traveler 6807

### Lesikar Impact W601

16663828

A Plus Blackcap 0037

Dixie Erica of C H 1019  
N Bar Emulation EXT  
G A R Scotch Cap 867

G A R Predestined

B/R New Design 036

### Lesikar Barbara U717

16109675 [DDP]

Sedgwicks Barbara 087

G A R Ext 4206  
O C C Backstop 888B  
Sedgwicks Barbara 4171

CED	BW	WW	YW	SC	MILK	SEN			
5	2.9	48	86	0.83	21	-2.72			
CWT	34	MARB	0.18	RE	0.53	SW	34.09	SB	100.11
		Act. BW	69	Act. WW	685	Act. YW	875		

## 25 Lesikar Rebound D769

Birth Date: 9/20/2016 Bull 18891972 Tattoo: D769

O C C Emblazon 854E

D H D Traveler 6807

### Lesikar Rebound X931

16663820

Sedgwicks Barbara 087

Dixie Erica of C H 1019  
O C C Backstop 888B  
Sedgwicks Barbara 4171

Twin Valley Precision E161

G A R Precision 1680

### Lesikar Erica U723

16107503 [NHF-OSF]

Twin Eagles Erica 668K

W C C Blackcap C9  
Papa Durabull 9805  
G A R New Trend 838

CED	BW	WW	YW	SC	MILK	SEN			
7	1.7	27	58	0.26	14	19.89			
CWT	4	MARB	0.22	RE	0.28	SW	11.09	SB	41.94
		Act. BW	70	Act. WW	510	Act. YW	700		

Ranked in the Top: 3% \$EN and 15% DMI

## 27 Lesikar Emblazon D710

Birth Date: 3/4/2016 Bull 18514351 Tattoo: D710

O C C Emblazon 854E

D H D Traveler 6807

### Lesikar Emblazon W604

16663831

A Plus Blackcap 0037

Dixie Erica of C H 1019  
N Bar Emulation EXT  
G A R Scotch Cap 867

Scotch Cap

P S Power Play

### LAR Pride P270

15079083

M A 6127 of 9352 Ext

Hoff Band 07 of S C 509  
N Bar Emulation EXT  
M A 9352 of 163 Travel 71

CED	BW	WW	YW	SC	MILK	SEN			
11	0.8	41	66	0.25	22	4.76			
CWT	25	MARB	0.37	RE	0.24	SW	38.8	SB	80.7
		Act. BW	60	Act. WW	260	Act. YW			

Ranked in the Top: 15% CED and 15% \$EN



Lot 28 - Lesikar Paxton 720D



# 2 Year Old Bulls

## 29 Lesikar Emblazon D707

Birth Date: 2/24/2016 Bull 18514348 Tattoo: D707

O C C Emblazon 854E  
**Lesikar Emblazon W604**  
 16663831  
 A Plus Blackcap 0037

D H D Traveler 6807  
 Dixie Erica of C H 1019  
 N Bar Emulation EXT  
 G A R Scotch Cap 867

S A V Mandan 5664

S A V 8180 Traveler 004

**Lesikar Erica X695**

16871962 [DDF]

S A V Abigale 0451

LAR Designer N127

Lesikar Erica T661

Sedgwicks Erica 6280

CED	BW	WW	YW	SC	MILK	SEN			
9	1.1	48	76	0.48	23	0.76			
CWT	31	MARB	0.24	RE	0.42	\$W	47.58	\$B	98.66
Act. BW		68	Act. WW		560	Act. YW		625	

## 30 Lesikar Paxton D723

Birth Date: 4/25/2016 Bull 18514363 Tattoo: D723

O C C Paxton 730P  
**Lesikar Paxton Y835**  
 17175217  
 L A R Barbara R360

O C C Focus 813F  
 O C C Blackbird 736K  
 BR Midland  
 Sedgwicks Barbara 087

SQ Credence 67S

S S Objective T510 0T26

**Lesikar Barbara Z107**

17573493

Rita 3540 of 021 Rito 111

B/R New Frontier 095

L A R Barbara R347

L A R Barbara M34

CED	BW	WW	YW	SC	MILK	SEN			
8	1.8	49	85		18	1.64			
CWT	17	MARB	0.73	RE	0.23	\$W	36.66	\$B	85.22
Act. BW		67	Act. WW		350	Act. YW			

## 31 Lesikar Paxton D708

Birth Date: 3/3/2016 Bull 18514349 Tattoo: D708

O C C Paxton 730P  
**Lesikar Paxton Y835**  
 17175217  
 L A R Barbara R360

O C C Focus 813F  
 O C C Blackbird 736K  
 BR Midland  
 Sedgwicks Barbara 087

O C C Jupiter 671J

O C C Emblazon 854E

**Lesikar Barbara Z173**

17574027

O C C Dixie Erica 816B

Connealy Lead On

L A R Barbara R362

M A A171 of 9619 Ambush

CED	BW	WW	YW	SC	MILK	SEN			
7	1.4	51	84	0.59	19	0.79			
CWT	15	MARB	0.36	RE	0.27	\$W	42.46	\$B	66.1
Act. BW		64	Act. WW		510	Act. YW		530	

## 32 Lesikar Broadside D770

Birth Date: 9/21/2016 Bull 18895524 Tattoo: D770

D H D Traveler 6807  
**O C C Broadside 876B**  
 11952559 [CAF-DDF-M1F-OHF]  
 Revolution Rose of R R 9239

Q A S Traveler 23-4  
 Bemindful Maid D H D 0807  
 PBC 707 1M F0203  
 Revolution Rose of R R 4064

Lesikar Emblazon W604

O C C Emblazon 854E

**Lesikar Burgess B360**

17818667

A Plus Blackcap 0037

BR Midland

Lesikar Burgess T646

Twin Eagles Burgess 316N

CED	BW	WW	YW	SC	MILK	SEN			
7	2.1	37	59	-0.41	19	11.71			
CWT	9	MARB	0.2	RE	0.19	\$W	29.31	\$B	40.63
Act. BW		65	Act. WW		535	Act. YW		600	

Ranked in the Top: 10% SEN

## 33 Lesikar Broadside D773

Birth Date: 9/24/2016 Bull 19005267 Tattoo: D773

D H D Traveler 6807  
**O C C Broadside 876B**  
 11952559 [CAF-DDF-M1F-OHF]  
 Revolution Rose of R R 9239

Q A S Traveler 23-4  
 Bemindful Maid D H D 0807  
 PBC 707 1M F0203  
 Revolution Rose of R R 4064

G A R Exaltation 3144

N Bar Emulation EXT

**LAR Blackbird S456**

15439247

G A R Scotch Cap 309

Sitz Traveler 8180

Twin Eagles Blackbird 702L

O C C Blackbird 796D

CED	BW	WW	YW	SC	MILK	SEN			
8	1	44	70	-0.33	26	-2.39			
CWT	24	MARB	0.15	RE	0.32	\$W	45.25	\$B	71.23
Act. BW		60	Act. WW		660	Act. YW		725	

## Lot 32 - Lesikar Broadside D770



## 34 Lesikar Rancher D803

Birth Date: 10/20/2016 Bull 18895573 Tattoo: D803

O C C Emblazon 854E  
**O C C Rancher 680R**  
 15289755  
 O C C Juanada 775C

D H D Traveler 6807  
 Dixie Erica of C H 1019  
 N Bar Emulation EXT  
 O C C Juanada 709V

S S Objective T510 0T26

S S Traveler 6807 T510

**Lesikar Erica T689**

15975661 [OSF]

S S Miss Rita R011 7R8

Papa Durabull 9805

Twin Eagles Erica 668K

G A R New Trend 838

CED	BW	WW	YW	SC	MILK	SEN			
9	0.9	39	66		21	6.08			
CWT	10	MARB	0.42	RE	0.21	\$W	34.5	\$B	56.26
Act. BW		69	Act. WW		650	Act. YW		750	

Ranked in the Top: 15% SEN

## 35 Lesikar Rancher D805D

Birth Date: 10/20/2016 Bull 18899562 Tattoo: D805D

O C C Emblazon 854E  
**O C C Rancher 680R**  
 15289755  
 O C C Juanada 775C

D H D Traveler 6807  
 Dixie Erica of C H 1019  
 N Bar Emulation EXT  
 O C C Juanada 709V

Jauer 353 Traveler 589 27

Jauer 7111 Traveler 353 719

**Lesikar Blackcap Y824**

16873722

Jauer 6807 Traveler 27 085

N Bar Emulation EXT

A Plus Blackcap 0037

G A R Scotch Cap 867

CED	BW	WW	YW	SC	MILK	SEN			
6	1.6	42	72		22	2.15			
CWT	21	MARB	0.41	RE	0.34	\$W	36.25	\$B	79.19
Act. BW		62	Act. WW		725	Act. YW		825	

# 2 Year Old Bulls

## 36 Lesikar Eureka D783D

Birth Date: 10/4/2016 Bull 18899552 Tattoo: D783D

O C C Backstop 888B

D H D Traveler 6807

**O C C Eureka 865E**  
12514352 [M1F]

Revolution Rose of R R 9239  
PBC 707 1M F0203

Blackbird of R R 1204

Blackbird of R R 7023

D H D Traveler 6807

Q A S Traveler 23-4

**Lesikar Blackcap Y944**  
17169628

Bemindful Maid D H D 0807  
N Bar Emulation EXT

A Plus Blackcap 0037

G A R Scotch Cap 867

CED	BW	WW	YW	SC	MILK	SEN			
6	1.7	40	63	0.05	22	6.05			
CWT	15	MARB	0.32	RE	0.3	\$W	36.69	\$B	61.52
Act. BW		68	Act. WW		610	Act. YW		725	

Ranked in the Top: 15% \$EN

## 37 Lesikar Absolute D813D

Birth Date: 10/31/2016 Bull 18899565 Tattoo: D813D

S A V Final Answer 0035

Sitz Traveler 8180

**K C F Bennett Absolute**  
16430795 [AMF-CAF-D2F-DDF-M1F-NHF-OHF]

S A V Emulous 8145  
Wulffs Ext 6106

Thomas Miss Lucy 5152

Thomas Miss Lucy 3050

S S Objective T510 OT26

S S Traveler 6807 T510

**G A R Objective 1765**  
15129446 [AMF-DDF-NHF]

S S Miss Rita R011 7R8  
Bon View New Design 1407

G A R 1407 New Design 2453

G A R Precision 4529

CED	BW	WW	YW	SC	MILK	SEN			
11	-0.5	52	93	0.6	19	2.37			
CWT	22	MARB	0.77	RE	0.46	\$W	48.54	\$B	98.67
Act. BW		69	Act. WW		650	Act. YW		700	

Ranked in the Top: 15% CED, 15% BW and 20% \$EN

## 39 Lesikar Impact D219 [DDP]

Birth Date: 10/13/2016 Bull 18891920 Tattoo: D219

O C C Emblazon 854E

D H D Traveler 6807

**Lesikar Impact W601**  
16663828

Dixie Erica of C H 1019  
N Bar Emulation EXT

A Plus Blackcap 0037

G A R Scotch Cap 867

S S Objective T510 OT26

S S Traveler 6807 T510

**Lesikar Miss Wix W551**  
16658859 [DDP]

S S Miss Rita R011 7R8  
B/R New Design 323

MCW MS Wix L657

Three Trees MS Wix 918A

CED	BW	WW	YW	SC	MILK	SEN			
15	-1.4	47	79	0.52	20	1.71			
CWT	22	MARB	0.39	RE	0.37	\$W	43.75	\$B	82.89
Act. BW		53	Act. WW		480	Act. YW			

Ranked in the Top: 2% CED and 10% BW

## Lot 36 - Lesikar Eureka D783D



## 38 Lesikar Impact D223 [DDP]

Birth Date: 10/29/2016 Bull 18891923 Tattoo: D223

O C C Emblazon 854E

D H D Traveler 6807

**Lesikar Impact W601**  
16663828

Dixie Erica of C H 1019  
N Bar Emulation EXT

A Plus Blackcap 0037

G A R Scotch Cap 867

Lesikar Emblazon X947

O C C Emblazon 854E

**Lesikar Precision B553**  
17818678 [DDP]

Sedgwicks Barbara 087  
SQ Credence 67S

Lesikar Precision Y155

G A R Precision 183

CED	BW	WW	YW	SC	MILK	SEN			
14	-0.6	43	74		20	3.91			
CWT	17	MARB	0.17	RE	0.34	\$W	38.56	\$B	60.03
Act. BW		45	Act. WW		475	Act. YW			

Ranked in the Top: 3% CED, 15% BW and 20% \$EN

## 40 Lesikar Impact D791D

Birth Date: 10/9/2016 Bull 19000156 Tattoo: D791D

O C C Emblazon 854E

D H D Traveler 6807

**Lesikar Impact W601**  
16663828

Dixie Erica of C H 1019  
N Bar Emulation EXT

A Plus Blackcap 0037

G A R Scotch Cap 867

LAR Designer N127

B/R New Design 036

**Lesikar Erica U332**  
16139051 [DDF]

Sedgwicks Barbara 087  
B C C Bushwacker 41-93

LAR Erica M57

Sedgwicks Erica 4670

CED	BW	WW	YW	SC	MILK	SEN			
4	2.9	44	75	0.3	21	4.97			
CWT	22	MARB	0.15	RE	0.36	\$W	35.56	\$B	80.64
Act. BW		67	Act. WW		585	Act. YW			

Ranked in the Top: 10% DMI and 15% \$EN



## Lot 37 Lesikar Absolute D813D



# 2 Year Old Bulls

## 41 Lesikar Emblazon D807D

Birth Date: 10/29/2016 Bull 18899563 Tattoo: D807D

O C C Emblazon 854E  
**Lesikar Emblazon W604**  
16663831

A Plus Blackcap 0037

O C C Eureka 865E  
**Lesikar Blackcap A191**  
17574000

A Plus Blackcap 0037

D H D Traveler 6807  
Dixie Erica of C H 1019  
N Bar Emulation EXT  
G A R Scotch Cap 867

O C C Backstop 888B  
Blackbird of R R 1204  
N Bar Emulation EXT  
G A R Scotch Cap 867

CED	BW	WW	YW	SC	MILK	SEN			
8	1.9	46	77	0.16	21	1.28			
CWT	19	MARB	0.21	RE	0.38	\$W	38.33	\$B	66.41
Act. BW		69	Act. WW		635	Act. YW		775	

## 42 Lesikar Rebound D790 [DDP]

Birth Date: 10/8/2016 Bull 18891978 Tattoo: D790

O C C Emblazon 854E  
**Lesikar Rebound X931**  
16663820

Sedgwicks Barbara 087

G A R Predestined  
**Lesikar Erica S629**  
15760029 [DDP-OSF]

Twin Eagles Erica 668K

D H D Traveler 6807  
Dixie Erica of C H 1019  
O C C Backstop 888B  
Sedgwicks Barbara 4171

B/R New Design 036  
G A R Ext 4206  
Papa Durabull 9805  
G A R New Trend 838

CED	BW	WW	YW	SC	MILK	SEN			
9	0.8	33	59		18	13.01			
CWT	8	MARB	0.34	RE	0.3	\$W	25.08	\$B	46.93
Act. BW		66	Act. WW		600	Act. YW		700	

Ranked in the Top: 5% SEN

## Lot 43 Lesikar Paxton D808



## 43 Lesikar Paxton D808

Birth Date: 10/29/2016 Bull 18891979 Tattoo: D808

O C C Paxton 730P  
**Lesikar Paxton A220**  
17820962 [DDF]

LAR Pride N154

O C C Eureka 865E  
**Lesikar Blackcap A187**  
17573991

A Plus Blackcap 0037

O C C Focus 813F  
O C C Blackbird 736K  
B/R New Design 036  
M A 6127 of 9352 Ext

O C C Backstop 888B  
Blackbird of R R 1204  
N Bar Emulation EXT  
G A R Scotch Cap 867

CED	BW	WW	YW	SC	MILK	SEN			
5	1.6	43	76	0.44	19	4.34			
CWT	14	MARB	0.35	RE	0.19	\$W	33	\$B	62.97
Act. BW		69	Act. WW		650	Act. YW		800	

Ranked in the Top: 20% SEN

## 44 Lesikar Surefire D787

Birth Date: 10/6/2016 Bull 18891976 Tattoo: D787

O C C Emblazon 854E  
**Lesikar Surefire X126**  
16873728

Sedgwicks Barbara 087

Connealy All Around  
**Lesikar Racquel W845**  
16327077 [CAF-NHF]

J&J 1680 Racquel 534

D H D Traveler 6807  
Dixie Erica of C H 1019  
O C C Backstop 888B  
Sedgwicks Barbara 4171

Connealy Whitman  
Entrust of Conanga 894  
G A R Precision 1680  
O S U 6079 Racquel 8176

CED	BW	WW	YW	SC	MILK	SEN			
4	2.7	37	60	-0.16	24	4.65			
CWT	19	MARB	0.42	RE	0.42	\$W	31.88	\$B	74.07
Act. BW		68	Act. WW		610	Act. YW		700	

Ranked in the Top: 20% SEN

## 45 Lesikar Surefire D794D

Birth Date: 10/11/2016 Bull 19000157 Tattoo: D794D

O C C Emblazon 854E  
**Lesikar Surefire X126**  
16873728

Sedgwicks Barbara 087

Bon View New Design 878  
**LAR Heatherbloom P224**  
15036916

LAR Heatherbloom M50

D H D Traveler 6807  
Dixie Erica of C H 1019  
O C C Backstop 888B  
Sedgwicks Barbara 4171

B/R New Design 036  
Bon View Gammer 85  
L A R Bando 1002  
Sedgwicks Heatherbloom 5730

CED	BW	WW	YW	SC	MILK	SEN			
5	2.6	17	34	-0.03	21	19.51			
CWT	10	MARB	0.15	RE	0.24	\$W	8.2	\$B	37.86
Act. BW		66	Act. WW		360	Act. YW			

Ranked in the Top: 3% SEN

## 46 Lesikar Surefire D795D [DDP]

Birth Date: 10/14/2016 Bull 18899554 Tattoo: D795D

O C C Emblazon 854E  
**Lesikar Surefire X126**  
16873728

Sedgwicks Barbara 087

G A R Predestined  
**Lesikar Erica S622**  
15760021 [DDC-OSF]

Twin Eagles Erica 668K

D H D Traveler 6807  
Dixie Erica of C H 1019  
O C C Backstop 888B  
Sedgwicks Barbara 4171

B/R New Design 036  
G A R Ext 4206  
Papa Durabull 9805  
G A R New Trend 838

CED	BW	WW	YW	SC	MILK	SEN			
5	2.7	27	46	-0.19	20	15.89			
CWT	4	MARB	0.44	RE	0.14	\$W	17.96	\$B	38.21
Act. BW		68	Act. WW		510	Act. YW		600	

Ranked in the Top: 4% SEN

# 2 Year Old Bulls

## 47 Lesikar Paxton D821

Birth Date: 11/16/2016 Bull 18755751 Tattoo: D821

O C C Paxton 730P  
**Lesikar Paxton A220**  
17820962 [DDF]

LAR Pride N154

Lesikar Impact W601

**Lesikar Lass B413**  
18110688

Lesikar Lass S617

O C C Focus 813F  
O C C Blackbird 736K  
B/R New Design 036  
M A 6127 of 9352 Ext

O C C Emblazon 854E  
A Plus Blackcap 0037  
L A R Designer M69  
LAR Lass P230

CED	BW	WW	YW	SC	MILK	SEN			
11	-1.3	21	45	-0.52	22	20.35			
CWT	-8	MARB	0.35	RE	0.25	\$W	25.78	\$B	31.19
		Act. BW	50	Act. WW	429	Act. YW	632		

Owned by 1860 Farms

Let's say you raise cattle on grass, this is your bull!! A super rare combo of Top 1% DMI, TOP 2% SEN, TOP 10% BW, 15% CED at +11 with a TOP 25% YG!! GGS is B/R New Design 036, GS is OCC Paxton 730P. Cow Families; A Plus Blackcap 0037 & M A 6127 of 9352 Ext. A Plus Blackcap 0037 is the full sister to the \$480,000 Coleman Blackcap 0813, the \$300,000 GAR EXT 2104, & the \$120,000 GAR EXT 2114 cows. B/R New Design 036 is a major producer in all of your Fall Sale Books.

## 49 Lesikar Emblazon D242

Birth Date: 11/11/2016 Bull 18891936 Tattoo: D242

O C C Emblazon 854E  
**Lesikar Emblazon X947**  
16663825

Sedgwicks Barbara 087

BR Midland

**Lesikar Blackcap U817**  
16342443 [CAF]

HA Blackcap 1137

D H D Traveler 6807  
Dixie Erica of C H 1019  
O C C Backstop 888B  
Sedgwicks Barbara 4171

Twin Valley Precision E161  
BR Royal Lass 7036-19  
Bon View New Design 208  
A Plus Blackcap 0140

CED	BW	WW	YW	SC	MILK	SEN			
8	1.6	32	58	0.31	19	12.86			
CWT	12	MARB	0.31	RE	0.3	\$W	24.19	\$B	63.34
		Act. BW	67	Act. WW	465	Act. YW			

Ranked in the Top: 10% SEN and 15% DMI



## Lot 49 - Lesikar Emblazon D242

## 51 Lesikar Emblazon D241

Birth Date: 11/19/2016 Bull 18891935 Tattoo: D241

O C C Emblazon 854E  
**Lesikar Emblazon X947**  
16663825

Sedgwicks Barbara 087

O C C Prototype 847P

**Lesikar Heatherbloom Y213**  
17175272 [DDF-M1F]

Sedgwicks Heatherbloom 5730

D H D Traveler 6807  
Dixie Erica of C H 1019  
O C C Backstop 888B  
Sedgwicks Barbara 4171

O C C Kanga 886K  
O C C Dixie Erica 867K  
Krugerrand of Donamere 490  
Sedgwicks Heatherbloom 5732

CED	BW	WW	YW	SC	MILK	SEN			
8	1.9	27	46		19	17.19			
CWT	12	MARB	0.11	RE	0.37	\$W	19.59	\$B	43.01
		Act. BW	70	Act. WW	430	Act. YW			

Ranked in the Top: 3% SEN and 20% YG

## 48 Lesikar Surefire D820D

Birth Date: 11/15/2016 Bull 19000159 Tattoo: D820D

O C C Emblazon 854E  
**Lesikar Surefire X126**  
16873728

Sedgwicks Barbara 087

L A R Traveler M32

**LAR Heatherbloom R324**  
15156023 [AMF-NHF]

Sedgwicks Heatherbloom 5730

D H D Traveler 6807  
Dixie Erica of C H 1019  
O C C Backstop 888B  
Sedgwicks Barbara 4171  
S S Traveler 6807 T510  
Sedgwicks Barbara 150  
Krugerrand of Donamere 490  
Sedgwicks Heatherbloom 5732

CED	BW	WW	YW	SC	MILK	SEN			
4	2.7	25	48	-0.07	22	12.41			
CWT	10	MARB	0.25	RE	0.3	\$W	15.95	\$B	46.17
		Act. BW	68	Act. WW	635	Act. YW			

Ranked in the Top: 10% SEN



## Lot 48 - Lesikar Surefire D820D

## 50 Lesikar Emblazon D239

Birth Date: 11/13/2016 Bull 18891933 Tattoo: D239

O C C Emblazon 854E  
**Lesikar Emblazon X947**  
16663825

Sedgwicks Barbara 087

S A V Bismarck 5682

**Lesikar Blackcap X961**  
16871845 [CAF]

HA Blackcap 1137

D H D Traveler 6807  
Dixie Erica of C H 1019  
O C C Backstop 888B  
Sedgwicks Barbara 4171

G A R Grid Maker  
S A V Abigale 0451  
Bon View New Design 208  
A Plus Blackcap 0140

CED	BW	WW	YW	SC	MILK	SEN			
9	1.4	32	56		22	9.04			
CWT	10	MARB	0.21	RE	0.35	\$W	27.93	\$B	45.18
		Act. BW	68	Act. WW	460	Act. YW			

Ranked in the Top: 10% SEN

## 52 Lesikar Emblazon D240

Birth Date: 11/21/2016 Bull 18891934 Tattoo: D240

O C C Emblazon 854E  
**Lesikar Emblazon X947**  
16663825

Sedgwicks Barbara 087

O C C Glory 950G

**Lesikar Queen Z300**  
17289364

Lesikar Queen W910

D H D Traveler 6807  
Dixie Erica of C H 1019  
O C C Backstop 888B  
Sedgwicks Barbara 4171

O C C Exodus 712E  
O C C Dixie Erica 971E  
Mytty In Focus  
COR Queen B 7191

CED	BW	WW	YW	SC	MILK	SEN			
9	1	28	53		20	12.95			
CWT		MARB		RE	\$W	21.46	\$B		
		Act. BW	64	Act. WW	380	Act. YW			

Ranked in the Top: 10% SEN



# 2 Year Old Bulls

## 53 Lesikar Emblazon D249

Birth Date: 12/1/2016 Bull 18891942 Tattoo: D249

O C C Emblazon 854E  
**Lesikar Emblazon X947**  
 16663825  
 Sedgwicks Barbara 087  
 O C C Emblazon 854E  
**Lesikar Blackcap X620**  
 16663827  
 A Plus Blackcap 0037

D H D Traveler 6807  
 Dixie Erica of C H 1019  
 O C C Backstop 888B  
 Sedgwicks Barbara 4171  
 D H D Traveler 6807  
 Dixie Erica of C H 1019  
 N Bar Emulation EXT  
 G A R Scotch Cap 867

CED	BW	WW	YW	SC	MILK	SEN			
12	-0.1	41	65		21	6.52			
CWT	16	MARB	0.16	RE	0.45	\$W	39.62	\$B	55.75
		Act. BW	58	Act. WW	475	Act. YW			

Ranked in the Top: 10% CED, 20% BW and 15% SEN

## 54 Lesikar Paxton D227

Birth Date: 11/21/2016 Bull 18891926 Tattoo: D227

O C C Paxton 730P  
**Lesikar Paxton Z305**  
 17289419  
 Lesikar Barbara X933  
 O C C Prototype 847P  
**Lesikar Burgess Y258**  
 17175264 [MIF]  
 Lesikar Burgess W548

O C C Focus 813F  
 O C C Blackbird 736K  
 O C C Emblazon 854E  
 Sedgwicks Barbara 087  
 O C C Kanga 886K  
 O C C Dixie Erica 867K  
 S S Objective T510 0T26  
 Lesikar Burgess T663

CED	BW	WW	YW	SC	MILK	SEN			
8	2	44	76		21	1.72			
CWT	19	MARB	0.3	RE	0.42	\$W	35.32	\$B	72.27
		Act. BW	71	Act. WW	475	Act. YW			

## 55 Lesikar Paxton D246 [DDP]

Birth Date: 11/21/2016 Bull 18891939 Tattoo: D246

O C C Paxton 730P  
**Lesikar Paxton Z305**  
 17289419  
 Lesikar Barbara X933  
 B/R New Design 036  
**LAR Pride P252**  
 15036950 [DDP]  
 M A 6127 of 9352 Ext

O C C Focus 813F  
 O C C Blackbird 736K  
 O C C Emblazon 854E  
 Sedgwicks Barbara 087  
 V D A R New Trend 315  
 B/R Blackcap Empress 76  
 N Bar Emulation EXT  
 M A 9352 of 163 Travel 71

CED	BW	WW	YW	SC	MILK	SEN			
8	1.1	33	60	0.75	28	-0.84			
CWT	21	MARB	0.35	RE	0.18	\$W	33.88	\$B	73.06
		Act. BW	67	Act. WW	435	Act. YW			

## 56 Lesikar Big Time D818

Birth Date: 11/8/2016 Bull 18895761 Tattoo: D818

O C C Rear End 751R  
**O C C Big Time 746Z**  
 17696450  
 O C C Dixie Erica 771R  
 O C C Jupiter 671J  
**Lesikar Queenie Y937**  
 17175055  
 Twin Eagles Queenie 500P

O C C Homer 650H  
 FCC Revolution Rose 995N  
 O C C Missing Link 830M  
 O C C Dixie Erica 776M  
 O C C Emblazon 854E  
 O C C Dixie Erica 816B  
 Sitz Alliance 6595  
 G A R Ext 916

CED	BW	WW	YW	SC	MILK	SEN			
3	2.8	55	97	0.64	14	1.29			
CWT	29	MARB	0.23	RE	0.45	\$W	32.75	\$B	95.63
		Act. BW	69	Act. WW	685	Act. YW	825		

## 57 Lesikar Practical D229

Birth Date: 11/22/2016 Bull 18891927 Tattoo: D229

O C C Practical 841P  
**Lesikar Practical A417**  
 17574098  
 A Plus Blackcap 0037  
 Twin Valley Precision E161  
**Lesikar Erica U823**  
 16325671 [NHF-OSF]  
 Twin Eagles Erica 668K

O C C Focus 813F  
 O C C Juanada 968G  
 N Bar Emulation EXT  
 G A R Scotch Cap 867  
 G A R Precision 1680  
 W C C Blackcap C9  
 Papa Durabull 9805  
 G A R New Trend 838

CED	BW	WW	YW	SC	MILK	SEN			
13	-0.9	30	56		18	14.28			
CWT	18	MARB	0.31	RE	0.31	\$W	24.16	\$B	65.26
		Act. BW	56	Act. WW	400	Act. YW			

Ranked in the Top: 10% CED, 10% BW, and 5% SEN



Lot 56 - Lesikar Big Time D818

## 58 Lesikar Impact D815 [DDP]

Birth Date: 11/4/2016 Bull 18891981 Tattoo: D815

O C C Emblazon 854E  
**Lesikar Impact W601**  
 16663828  
 A Plus Blackcap 0037  
 Lesikar Rebound X931  
**Lesikar Erica B382**  
 18110674 [DDP]  
 Lesikar Erica S622

D H D Traveler 6807  
 Dixie Erica of C H 1019  
 N Bar Emulation EXT  
 G A R Scotch Cap 867  
 O C C Emblazon 854E  
 Sedgwicks Barbara 087  
 G A R Predestined  
 Twin Eagles Erica 668K

CED	BW	WW	YW	SC	MILK	SEN			
11	0.6	40	76	0.22	17	6.92			
CWT	22	MARB	0.12	RE	0.29	\$W	27.99	\$B	67.67
		Act. BW	55	Act. WW	610	Act. YW	750		

Ranked in the Top: 15% CED and 15% SEN

Follow us on Facebook  
 for up-to-date information  
 regarding upcoming Events.

# 19 Month Old Bulls

## 59 Lesikar Impact D826

Birth Date: 11/24/2016 Bull 18891985 Tattoo: D826

O C C Emblazon 854E

D H D Traveler 6807

**Lesikar Impact W601**  
16663828

Dixie Erica of C H 1019  
N Bar Emulation EXT  
G A R Scotch Cap 867

A Plus Blackcap 0037

O C C Broadside 876B

D H D Traveler 6807

**Lesikar Errolline B439**  
18114359

Revolution Rose of R R 9239  
BR Midland

DCF Errolline 6634

Three Trees Errolline 3666

CED	BW	WW	YW	SC	MILK	SEN			
6	3.1	43	85	0	14	6.72			
CWT	20	MARB	0.22	RE	0.26	\$W	18.51	\$B	71.61
		Act. BW	68	Act. WW	510	Act. YW	610		

Ranked in the Top: 15% \$EN

## 60 Lesikar Legacy D244

Birth Date: 11/12/2016 Bull 19000154 Tattoo: D244

O C C Emblazon 854E

D H D Traveler 6807

**Lesikar Legacy W607**  
16663832

Dixie Erica of C H 1019  
N Bar Emulation EXT  
G A R Scotch Cap 867

A Plus Blackcap 0037

N Bar Emulation EXT

Emulation N Bar 5522

**Lesikar Barbara Y256**  
17169356

N Bar Primrose 2424  
O C C Backstop 888B

Sedgwicks Barbara 087

Sedgwicks Barbara 4171

CED	BW	WW	YW	SC	MILK	SEN			
7	1.4	48	79		24	-3.61			
CWT	25	MARB	0.19	RE	0.39	\$W	45.03	\$B	77.55
		Act. BW	64	Act. WW	485	Act. YW			

## 61 Lesikar Impact D225

Birth Date: 11/13/2016 Bull 18891925 Tattoo: D225

O C C Emblazon 854E

D H D Traveler 6807

**Lesikar Impact W601**  
16663828

Dixie Erica of C H 1019  
N Bar Emulation EXT  
G A R Scotch Cap 867

A Plus Blackcap 0037

Lesikar Emblazon X947

O C C Emblazon 854E

**Lesikar Erica B559**  
17863017

Sedgwicks Barbara 087  
B C C Bushwacker 41-93

Lesikar Erica Z293

A H A Ritos Traveler

CED	BW	WW	YW	SC	MILK	SEN			
12	-0.3	45	74		20	3.91			
CWT	20	MARB	0.07	RE	0.25	\$W	41.24	\$B	58.28
		Act. BW	45	Act. WW	505	Act. YW			

Ranked in the Top: 10% CED, 20% BW and 20% \$EN



## Lot 59 - Lesikar Impact D826

## 62 Lesikar Legacy D236

Birth Date: 11/27/2016 Bull 18891931 Tattoo: D236

O C C Emblazon 854E

D H D Traveler 6807

**Lesikar Legacy W607**  
16663832

Dixie Erica of C H 1019  
N Bar Emulation EXT  
G A R Scotch Cap 867

A Plus Blackcap 0037

B C C Bushwacker 41-93

Paramont Ambush 2172

**Lesikar Erica Z293**  
17287200

R C Anita T Bando 918903  
Rito 616 of 4B20 6807

A H A Ritos Traveler

Wright 8180 Traveler 807

CED	BW	WW	YW	SC	MILK	SEN			
6	1.9	50	78		24	-3.17			
CWT	24	MARB	0.28	RE	0.29	\$W	47.05	\$B	78.47
		Act. BW	71	Act. WW	465	Act. YW			

## 63 Lesikar Legacy D245

Birth Date: 11/28/2016 Bull 18891938 Tattoo: D245

O C C Emblazon 854E

D H D Traveler 6807

**Lesikar Legacy W607**  
16663832

Dixie Erica of C H 1019  
N Bar Emulation EXT  
G A R Scotch Cap 867

A Plus Blackcap 0037

O C C Emblazon 854E

D H D Traveler 6807

**Lesikar Barbara X930**  
16663816

Dixie Erica of C H 1019  
O C C Backstop 888B

Sedgwicks Barbara 087

Sedgwicks Barbara 4171

CED	BW	WW	YW	SC	MILK	SEN			
10	0.9	49	80	0.15	20	1.27			
CWT	20	MARB	0.18	RE	0.44	\$W	42.98	\$B	67.85
		Act. BW	64	Act. WW	455	Act. YW			

Ranked in the Top: 20% CED

## 64 Lesikar Paxton D255 [DDP]

Birth Date: 12/6/2016 Bull 18891947 Tattoo: D255

O C C Paxton 730P

O C C Focus 813F

**Lesikar Paxton Z305**  
17289419

O C C Blackbird 736K  
O C C Emblazon 854E

Lesikar Barbara X933

Sedgwicks Barbara 087

G A R Predestined

B/R New Design 036

**Lesikar Barbara W831**  
16328574 [DDC]

G A R Ext 4206  
O C C Backstop 888B

Sedgwicks Barbara 087

Sedgwicks Barbara 4171

CED	BW	WW	YW	SC	MILK	SEN			
5	2.7	36	67		22	4.32			
CWT	22	MARB	0.31	RE	0.43	\$W	25.34	\$B	77.69
		Act. BW	71	Act. WW	425	Act. YW			

Ranked in the Top: 20% \$EN

## 65 Lesikar Paxton D254 [DDP-M1P]

Birth Date: 12/10/2016 Bull 18891946 Tattoo: D254

O C C Paxton 730P

O C C Focus 813F

**Lesikar Paxton Z305**  
17289419

O C C Blackbird 736K  
O C C Emblazon 854E

Lesikar Barbara X933

Sedgwicks Barbara 087

ALC Big Eye D09N

C A Future Direction 5321

**Lesikar Juana U791**  
16324330 [DDP-M1P]

ALC Hazel L12L  
LAR Designer N127

Lesikar Juana S512

Twin Eagles Juana 184J

CED	BW	WW	YW	SC	MILK	SEN			
8	1.6	38	69	0.66	26	-1.95			
CWT	22	MARB	0.37	RE	0.46	\$W	35.08	\$B	80.88
		Act. BW	65	Act. WW	450	Act. YW			



# 19 Month Old Bulls

**66 Lesikar Legacy D251** [M1P]  
 Birth Date: 12/9/2016 Bull 18891944 Tattoo: D251

O C C Emblazon 854E D H D Traveler 6807  
**Lesikar Legacy W607** Dixie Erica of C H 1019  
 16663832 N Bar Emulation EXT  
 A Plus Blackcap 0037 G A R Scotch Cap 867  
 O C C Prototype 847P O C C Kanga 886K  
**Lesikar Queenie Y266** O C C Dixie Erica 867K  
 17175258 [M1P] B/R Destination 727-928  
 Lesikar Queenie W494 Premium Gold Queenie 302R

CED	BW	WW	YW	SC	MILK	SEN			
11	0.3	52	83	0.15	22	-2.71			
CWT	28	MARB	0.48	RE	0.49	\$W	49.25	\$B	98.7
		Act. BW	62	Act. WW	475	Act. YW			

Ranked in the Top: 15% CED

**68 Lesikar Rebound D828**  
 Birth Date: 12/1/2016 Bull 18891986 Tattoo: D828

O C C Emblazon 854E D H D Traveler 6807  
**Lesikar Rebound X931** Dixie Erica of C H 1019  
 16663820 O C C Backstop 888B  
 Sedgwicks Barbara 087 Sedgwicks Barbara 4171  
 Lesikar Impact W601 O C C Emblazon 854E  
**Lesikar Lass B437** A Plus Blackcap 0037  
 18110704 Summitcrest Complete 1P55  
 Lesikar Lass X668 L A R Lass N103

CED	BW	WW	YW	SC	MILK	SEN			
9	0.4	45	81	0.65	19	2.13			
CWT	28	MARB	0.06	RE	0.59	\$W	36.05	\$B	80.52
		Act. BW	57	Act. WW	600	Act. YW	700		

**69 Lesikar Paxton D831**  
 Birth Date: 12/8/2016 Bull 18899566 Tattoo: D831

O C C Paxton 730P O C C Focus 813F  
**Lesikar Paxton A220** O C C Blackbird 736K  
 17820962 [DDF] B/R New Design 036  
 LAR Pride N154 M A 6127 of 9352 Ext  
 Lesikar Rebound X931 O C C Emblazon 854E  
**Lesikar Annie B434** Sedgwicks Barbara 087  
 18110701 Summitcrest Complete 1P55  
 Lesikar Annie X691 Garretts E Bar V Annie 3149

CED	BW	WW	YW	SC	MILK	SEN			
2	1.8	45	85	-0.08	13	14.49			
CWT	24	MARB	0.2	RE	0.67	\$W	31.39	\$B	90.96
		Act. BW	53	Act. WW	295	Act. YW	448		

Owned by 1860 Farms

"Pasture to Rail" is in his genetics with 7 EPD's in the TOP 25% with a Top 3% \$YG & a Top 4% SEN you've got something to brag about. A Grandson of OCC Paxton 730P & a Great Grandson of OCC Emblazon 854E, Summitcrest Complete 1P55 & B/R New Design 036 (a genetic provider for so many herd changing Sires in the Angus Breed)! This is a Nice Breeding Package with proven performance. Take a look at those Fall Catalogs and see who's using these genetic. You will be in good company.

**71 Lesikar Eureka D264**  
 Birth Date: 12/12/2016 Bull 18755781 Tattoo: D264

O C C Eureka 865E O C C Backstop 888B  
**Lesikar Eureka Z371** Blackbird of R R 1204  
 17573968 D H D Traveler 6807  
 MJB Traveler Lady 398 87921 HHF Precision Lady 704 398  
 S A V Mandan 5664 S A V 8180 Traveler 004  
**Lesikar Blackcap Y212** S A V Abigale 0451  
 17169433 Rito 616 of 4B20 6807  
 Twin Eagles Blackcap 418P P A B Blackcap 920

CED	BW	WW	YW	SC	MILK	SEN			
8	1.4	55	89	1.22	22	3.97			
CWT	26	MARB	0.21	RE	0.51	\$W	58.87	\$B	101.82
		Act. BW	64	Act. WW	425	Act. YW	645		

Owned by 1860 Farms

S A V 8180 Traveler 004 alone has over 24,000 progeny on the ground with weaning weights on record! Add in Rito 616 of 4B20 6807 and "This bulls EPD's Pop to life"! Look at the ladies in his pedigree; Blackbird of R R 1204, HHF Precision Lady 704 398, S A V Abigale 0451 & Twin Eagles Blackcap 418P. Add to that TOP 3% DMI & TOP 25% CED, \$W, \$YG, \$EN, SC & TOP 30% RADG & you have a BULL to ENJOY! But wait just one "cotton pickin minute" here, don't forget about these studs in his family tree; DHD Traveler 6807, OCC Eureka 865E & Lesikar Eureka Z371

**67 Lesikar Paxton D265**  
 Birth Date: 12/8/2016 Bull 18755757 Tattoo: D265

O C C Paxton 730P O C C Focus 813F  
**Lesikar Paxton Z305** O C C Blackbird 736K  
 17289419 O C C Emblazon 854E  
 Lesikar Barbara X933 Sedgwicks Barbara 087  
 Vermilion Dateline 7078 Connealy Dateline  
**Lesikar Queen Idelette Z283** Vermilion Blackbird 5044  
 17169881 S A V 8180 Traveler 004  
 Lesikar Queen Idlette W555 LAR Queen Idelette R311

CED	BW	WW	YW	SC	MILK	SEN			
10	-0.3	43	76	0.09	21	7.84			
CWT	23	MARB	0.54	RE	0.49	\$W	44.39	\$B	107.24
		Act. BW	65	Act. WW	440	Act. YW	596		

Owned by 1860 Farms

With 6 Angus Pathfinders in his 3 generation pedigree he has power to share. With SAV 8180 Traveler 004, Connealy Dateline, OCC Paxton & Emblazon on the Sire side while Vermilion Dateline 7078 & Vermilion Blackbird 5044 bring up the ladies in his life. SAV 8180 Traveler 004 is in the most powerful breeding programs in several states. Check out how 44 Farms and Wilks Ranch have utilized his genetics.

KEEP ALL of HIS HEFIERS! Add in a Top 2% DMI, 10% \$EN, 15% BW & 20% CED.



## Lot 68 - Lesikar Rebound D828

**70 Lesikar Paxton D829**  
 Birth Date: 12/1/2016 Bull 18755740 Tattoo: D829

O C C Paxton 730P O C C Focus 813F  
**Lesikar Paxton A220** O C C Blackbird 736K  
 17820962 [DDF] B/R New Design 036  
 LAR Pride N154 M A 6127 of 9352 Ext  
 O C C Broadside 876B D H D Traveler 6807  
**Lesikar Blackcap B427** Revolution Rose of R R 9239  
 18114333 Lesikar Emblazon W604  
 Lesikar Blackcap W464

CED	BW	WW	YW	SC	MILK	SEN	
6	MARB	0.26	RE	0.2	\$W	\$B	
		Act. BW	59	Act. WW	350	Act. YW	660

**72 Lesikar Broadside D833**  
 Birth Date: 12/15/2016 Bull 18895529 Tattoo: D833

D H D Traveler 6807 Q A S Traveler 23-4  
**O C C Broadside 876B** Bemindful Maid D H D 0807  
 11952559 [CAF-DDF-M1F-OHF] PBC 707 1M F0203  
 Revolution Rose of R R 9239 Revolution Rose of R R 4064  
 BR Midland Twin Valley Precision E161  
**DCF Errolline 6634** BR Royal Lass 7036-19  
 15571466 N Bar Prime Time D806  
 Three Trees Errolline 3666 Connealy 6807 647

CED	BW	WW	YW	SC	MILK	SEN			
6	1.8	37	66	-0.16	12	17.56			
CWT	9	MARB	0.32	RE	0.21	\$W	19.48	\$B	49.02
		Act. BW	69	Act. WW	535	Act. YW	575		

Ranked in the Top: 3% \$EN

# 19 Month Old Bulls

## 73 Lesikar Paxton D274 [ DDF ]

Birth Date: 12/18/2016 Bull 18891958 Tattoo: D274

O C C Paxton 730P

**Lesikar Paxton Z311**  
17290572

Lesikar Barbara X934

Lesikar Rebound X931

**Lesikar Barbara B595**  
18110754 [DDP]

Lesikar Barbara W549

O C C Focus 813F  
O C C Blackbird 736K  
O C C Emblazon 854E  
Sedgwicks Barbara 087

O C C Emblazon 854E  
Sedgwicks Barbara 087  
G A R Predestined  
L A R Barbara R352

CED	BW	WW	YW	SC	MILK	SEN			
12	0.5	42	74	1.05	19	12.28			
CWT	11	MARB	0.14	RE	0.56	\$W	41.37	\$B	49.57
Act. BW		65	Act. WW		266	Act. YW		415	

Owned by 1860 Farms

Heifer BULL! TOP 10% CED at +12 ! TOP 10% SEN means he works on grass. Top 20% CEM, 30% BW & SC. Breed him to your favorite cow and hope for a bull calf. OCC Paxton 730P, OCC Emblazon 854E (Twice) & GAR Predestined is why you keep that calf & if it's a heifer that's even better. If your not around to "pull calves" then this is your man. Remember those "Pasture to Rail" test in at 444lbs out at 1263lbs with ADG of 3.54. Think about it while you're not "pullin calves".

## 75 Lesikar Emblazon E837

Birth Date: 1/1/2017 Bull 18892049 Tattoo: E837

O C C Emblazon 854E

**Lesikar Emblazon W604**  
16663831

A Plus Blackcap 0037

Leachman Saugahatchee 3000C

**LAR Princess P237**  
15036926

Sedgwicks Princess 7820

D H D Traveler 6807  
Dixie Erica of C H 1019  
N Bar Emulation EXT  
G A R Scotch Cap 867

N Bar Emulation EXT  
Leachman B C 7100  
H A Quantum 4100  
Sedgwicks Princess 7827

CED	BW	WW	YW	SC	MILK	SEN			
9	1	34	61	-0.45	19	12.3			
CWT	17	MARB	0.16	RE	0.21	\$W	28	\$B	65.37
Act. BW		67	Act. WW		425	Act. YW		810	

Ranked in the Top: 10% SEN

## 77 Lesikar Paxton D275 [ DDP ]

Birth Date: 12/30/2016 Bull 18891959 Tattoo: D275

O C C Paxton 730P

**Lesikar Paxton Z305**  
17289419

Lesikar Barbara X933

LAR Designer N127

**Lesikar Miss X945**  
16658862 [DDP]

Twin Eagles Miss 625K

O C C Focus 813F  
O C C Blackbird 736K  
O C C Emblazon 854E  
Sedgwicks Barbara 087

B/R New Design 036  
Sedgwicks Barbara 087  
V D A R Ambush 1465 S A F  
W C S Ext R70

CED	BW	WW	YW	SC	MILK	SEN			
2	3.5	25	52	0.44	26	5.33			
CWT	19	MARB	0.31	RE	0.38	\$W	15.32	\$B	68.5
Act. BW		73	Act. WW		475	Act. YW		715	

Ranked in the Top: 15% SEN

## 79 Lesikar Emblazon D271D

Birth Date: 12/26/2016 Bull 18891955 Tattoo: D271D

O C C Emblazon 854E

**Lesikar Emblazon X947**  
16663825

Sedgwicks Barbara 087

O C C Anchor 771A

**Lesikar Blackcap Z315**  
17289356

A Plus Blackcap 0037

D H D Traveler 6807  
Dixie Erica of C H 1019  
O C C Backstop 888B  
Sedgwicks Barbara 4171

D H D Traveler 6807  
O C C Juanada 709V  
N Bar Emulation EXT  
G A R Scotch Cap 867

CED	BW	WW	YW	SC	MILK	SEN			
7	1.4	24	38		18	21.79			
CWT	2	MARB		RE	\$W	18.57	\$B		
Act. BW		66	Act. WW		480	Act. YW		620	

Ranked in the Top: 2% SEN

## 74 Lesikar Rancher D835

Birth Date: 12/17/2016 Bull 18895572 Tattoo: D835

O C C Emblazon 854E

**O C C Rancher 680R**  
15289755

O C C Juanada 775C

Mytty In Focus

**Lesikar Ever Entense T700**  
16093057

Kahn Everelda Entense B050

D H D Traveler 6807  
Dixie Erica of C H 1019  
N Bar Emulation EXT  
O C C Juanada 709V

S A F Focus of E R  
Mytty Countess 906  
Baldrige Bob

Sitz Everelda Entense 205

CED	BW	WW	YW	SC	MILK	SEN			
9	0.8	46	75	0.69	23	-0.5			
CWT	24	MARB	0.37	RE	0.42	\$W	43.68	\$B	85.09
Act. BW		69	Act. WW		660	Act. YW		725	

## 76 Lesikar Rancher E838

Birth Date: 1/5/2017 Bull 18895597 Tattoo: E838

O C C Eureka 865E

**O C C Rancher 680K**  
15289755

O C C Dixie Erica 954K

Jauer 353 Traveler 589 27

**Lesikar Blackcap Y813**  
16873717

A Plus Blackcap 0037

O C C Backstop 888B  
Blackbird of R R 1204  
O C C Anchor 771A  
O C C Dixie Erica 907C

Jauer 7111 Traveler 353 719  
Jauer 6807 Traveler 27 085  
N Bar Emulation EXT  
G A R Scotch Cap 867

CED	BW	WW	YW	SC	MILK	SEN			
3	2.1	51	81		20	0.82			
CWT	27	MARB	0.23	RE	0.43	\$W	42.65	\$B	85.27
Act. BW		68	Act. WW		625	Act. YW		910	

## 78 Lesikar Eureka D277

Birth Date: 1/2/2017 Bull 18891961 Tattoo: D277

O C C Eureka 865E

**Lesikar Eureka Z371**  
17573968

MJB Traveler Lady 398 87921

BR Midland

**Lesikar Blackcap U812**  
16286733 [CAF]

HA Blackcap 1137

O C C Backstop 888B  
Blackbird of R R 1204  
D H D Traveler 6807  
HHF Precision Lady 704 398

Twin Valley Precision E161  
BR Royal Lass 7036-19  
Bon View New Design 208  
A Plus Blackcap 0140

CED	BW	WW	YW	SC	MILK	SEN			
11	0.2	39	64	0.35	24	2.94			
CWT	12	MARB	0.46	RE	0.25	\$W	39.39	\$B	61.09
Act. BW		64	Act. WW		585	Act. YW		805	

Ranked in the Top: 15% CED and 20% SEN

## 80 Lesikar Emblazon E291

Birth Date: 1/16/2017 Bull 18892001 Tattoo: E291

O C C Emblazon 854E

**Lesikar Emblazon X947**  
16663825

Sedgwicks Barbara 087

O C C Legend 616L

**Lesikar Lady Belle Y252**  
17175111

MJB Traveler Lady 398 87921

D H D Traveler 6807  
Dixie Erica of C H 1019  
O C C Backstop 888B  
Sedgwicks Barbara 4171

O C C Emblazon 854E  
O C C Blackbird 632J  
D H D Traveler 6807  
HHF Precision Lady 704 398

CED	BW	WW	YW	SC	MILK	SEN			
13	-0.6	28	39	-0.35	20	18.78			
CWT	2	MARB	0.21	RE	0.19	\$W	29.73	\$B	23.75
Act. BW		58	Act. WW		515	Act. YW		610	

Ranked in the Top: 10% CED, 15% BW and 3% SEN



# 19 Month Old Bulls

## 81 Lesikar Practical E292

Birth Date: 1/15/2017 Bull 18892002 Tattoo: E292

O C C Practical 841P  
**Lesikar Practical A417**  
 17574098  
 A Plus Blackcap 0037  
 O C C Glory 950G  
**Lesikar Barbara Z384**  
 17573982  
 Lesikar Barbara X937  
 O C C Focus 813F  
 O C C Juanada 968G  
 N Bar Emulation EXT  
 G A R Scotch Cap 867  
 O C C Exodus 712E  
 O C C Dixie Erica 971E  
 O C C Emblazon 854E  
 Sedgwicks Barbara 087

CED	BW	WW	YW	SC	MILK	SEN			
11	-0.2	41	65	0.73	25	5.52			
CWT	25	MARB	0.58	RE	0.14	\$W	48.03	\$B	102.46
Act. BW		55	Act. WW		280	Act. YW		550	

Owned by 1860 Farms

GG Grandson of N Bar Emulation EXT & OCC Emblazon 854E between them they have over 45,000 calves on the ground w registerd weaning weights, that proven performance. With 6 TOP EPD's in Production & Maternal Percentiles this is one to look at. Top 4% DMI, TOP 15% CED & SEN, TOP 20% BW, TOP 25% CEM & TOP 30% HP his daughters will be some of your long time favorites. Just look at that family tree it is full of EXT & OCC genetics.

## 83 Lesikar Practical E283 [DDP]

Birth Date: 1/15/2017 Bull 18891993 Tattoo: E283

O C C Practical 841P  
**Lesikar Practical A417**  
 17574098  
 A Plus Blackcap 0037  
 SQ Credence 67S  
**Lesikar Blackcap Z310**  
 17287179 [DDP]  
 G A R Expectation 1643  
 O C C Focus 813F  
 O C C Juanada 968G  
 N Bar Emulation EXT  
 G A R Scotch Cap 867  
 S S Objective T510 0T26  
 Rita 3540 of 021 Rito 111  
 G A R Expectation 4915  
 G A R New Design 2609

CED	BW	WW	YW	SC	MILK	SEN			
14	-0.7	50	88	0.74	22	-4.95			
CWT	33	MARB	0.62	RE	0.39	\$W	45.41	\$B	116.89
Act. BW		62	Act. WW		665	Act. YW		950	

Ranked in the Top: 4% CED and 15% BW



## Lot 84 - Lesikar Practical E288

## 86 Lesikar Anchor E844

Birth Date: 1/29/2017 Bull 18895522 Tattoo: E844

D H D Traveler 6807  
**O C C Anchor 771A**  
 11684971 [CAF-DDF-MF-OHF]  
 O C C Juanada 709V  
 B/R New Frontier 095  
**L A R Barbara R347**  
 15344725  
 L A R Barbara M34  
 Q A S Traveler 23-4  
 Bemindful Maid D H D 0807  
 Cole Creek Oscar 92R  
 Juanada of Rollin Rock 0355  
 B/R New Design 036  
 White Fence Pride H1  
 Rito 616 of 4B20 6807  
 Sedgwicks Barbara 7550

CED	BW	WW	YW	SC	MILK	SEN			
6	1.6	37	63	0.15	16	13.85			
CWT	12	MARB	0.43	RE	0.25	\$W	26	\$B	61.87
Act. BW		69	Act. WW		575	Act. YW		675	

Ranked in the Top: 5% SEN and 20% SYG

## 82 Lesikar Practical E280

Birth Date: 1/15/2017 Bull 18891990 Tattoo: E280

O C C Practical 841P  
**Lesikar Practical A417**  
 17574098  
 A Plus Blackcap 0037  
 N Bar Emulation EXT  
**Lesikar Burgess U776**  
 16342432  
 Twin Eagles Burgess 750L  
 O C C Focus 813F  
 O C C Juanada 968G  
 N Bar Emulation EXT  
 G A R Scotch Cap 867  
 Emulation N Bar 5522  
 N Bar Primrose 2424  
 G A R Precision 1680  
 Acf Burgess 9523

CED	BW	WW	YW	SC	MILK	SEN			
8	1.3	42	71	0.69	20	5.23			
CWT	28	MARB	0.31	RE	0.44	\$W	35.38	\$B	89.35
Act. BW		68	Act. WW		595	Act. YW		800	

Ranked in the Top: 15% SEN

## 84 Lesikar Practical E288

Birth Date: 1/16/2017 Bull 18891998 Tattoo: E288

O C C Practical 841P  
**Lesikar Practical A417**  
 17574098  
 A Plus Blackcap 0037  
 O C C Missing Link 830M  
**Lesikar Everelda Entense Y260**  
 17177870  
 Kahn Everelda Entense B050  
 O C C Focus 813F  
 O C C Juanada 968G  
 N Bar Emulation EXT  
 G A R Scotch Cap 867  
 O C C Headliner 661H  
 O C C Dixie Erica 946K  
 Baldrige Bob  
 Sitz Everelda Entense 205

CED	BW	WW	YW	SC	MILK	SEN			
12	-0.2	48	85	1.2	21	-2.27			
CWT	32	MARB	0.32	RE	0.47	\$W	41.91	\$B	102.49
Act. BW		62	Act. WW		620	Act. YW		950	

Ranked in the Top: 10% CED and 20% BW

## 85 Lesikar Practical E320

Birth Date: 2/2/2017 Bull 18755762 Tattoo: E320

O C C Practical 841P  
**Lesikar Practical A417**  
 17574098  
 A Plus Blackcap 0037  
 Lesikar Rebound X931  
**Lesikar Lass X135**  
 17863001  
 Lesikar Lass X135  
 O C C Focus 813F  
 O C C Juanada 968G  
 N Bar Emulation EXT  
 G A R Scotch Cap 867  
 O C C Emblazon 854E  
 Sedgwicks Barbara 087  
 O C C Glory 950G  
 Ma 8039 of 334 Ambush

CED	BW	WW	YW	SC	MILK	SEN			
13	-0.5	29	55	-0.09	21	12.67			
CWT	4	MARB	0.1	RE	0.16	\$W	27.41	\$B	21.98
Act. BW		50	Act. WW			Act. YW		588	

Owned by 1860 Farms

Heifer Bull Deluxe, With a TOP 10% CED at +13, TOP 15% BW & TOP 10% SEN. With his Pedigree of N Bar Emulation EXT, GAR Scotch Cap 867, Sedgwicks Barbara 087 & OCC Glory 950G put him on your favorite heifers & you will be producing heifers worth retaining. Break out all of the Big Time Angus Slae Book you've received in the last 4 months and be impressed by the use of N Bar Emulation EXT in the most valued Lots of so many Ranches. Calving Ease with a History.

## 87 Lesikar Eureka E321

Birth Date: 2/3/2017 Bull 18755779 Tattoo: E321

O C C Eureka 865E  
**Lesikar Eureka Z371**  
 17573968  
 MJB Traveler Lady 398 87921  
 O C C Jupiter 671J  
**Lesikar Blackcap Y204**  
 17175056 [DDF]  
 G A R Expectation 1643  
 O C C Backstop 888B  
 Blackbird of R R 1204  
 D H D Traveler 6807  
 HHF Precision Lady 704 398  
 O C C Emblazon 854E  
 O C C Dixie Erica 816B  
 G A R Expectation 4915  
 G A R New Design 2609

CED	BW	WW	YW	SC	MILK	SEN			
15	-2.4	38	66	-0.09	29	4.69			
CWT	6	MARB	0.14	RE	0.39	\$W	54.72	\$B	46.61
Act. BW		60	Act. WW		414	Act. YW		650	

Owned by 1860 Farms

The Great Angus Stud D H D Traveler 6807 adds a lot to this one. TOP 2% CED, TOP 2% BW, TOP 4% SYG, TOP 15% Milk, 15% Fat, 15% SEN, 15% DMI, TOP 35% CEM & 35% \$W!!! Bring your best girls to the pasture and let this man go to work. Fill in his back ground with some additional "Rock Stars" like; OCC Eureka 865E, OCC Emblazon 854E, GAR Expectation 4915 & OCC Jupiter 671J and you've got some genetics to build a herd with.

# 19 Month Old Bulls

## 88 Lesikar Eureka E306 [DDP]

Birth Date: 2/4/2017 Bull 18892014 Tattoo: E306

O C C Eureka 865E  
**Lesikar Eureka Z371**  
 17573968  
 MJB Traveler Lady 398 87921

O C C Backstop 888B  
 Blackbird of R R 1204  
 D H D Traveler 6807  
 HHF Precision Lady 704 398

CED	BW	WW	YW	SC	MILK	SEN			
9	1.9	40	65	0.66	14	22.69			
CWT	19	MARB	0.29	RE	0.38	\$W	33.83	\$B	68.38
Act. BW		66	Act. WW		270	Act. YW		550	

Owned by 1860 Farms

Grand Sires, DHD Traveler 6807 & OCC Emblazon 854E will make for a heifer calf that is a keeper. With a TOP 2% \$EN, TOP 20 \$YG, TOP 25% FAT, Top 30% CED & 35% CEM you have some built in performance. Remember those "Pasture to Rail" test in at 444lbs out at 1263lbs with ADG of 3.54. 35.29% Prime, 64.71% Choice with premium paid. Sedgwicks Barbara 087 will add to the maternal side and his daughters will be easy keepers; they work on grass, have good udders & make great mothers, as proven by his pedigree.

## 90 Lesikar Eureka E299 [DDP]

Birth Date: 2/2/2017 Bull 18892007 Tattoo: E299

O C C Eureka 865E  
**Lesikar Eureka Z371**  
 17573968  
 MJB Traveler Lady 398 87921

O C C Backstop 888B  
 Blackbird of R R 1204  
 D H D Traveler 6807  
 HHF Precision Lady 704 398

CED	BW	WW	YW	SC	MILK	SEN			
10	0.2	43	71	1.25	24	-0.1			
CWT	18	MARB	0.35	RE	0.34	\$W	42.63	\$B	70.7
Act. BW		66	Act. WW		590	Act. YW		775	

Ranked in the Top: 20% CED

## 89 Lesikar Eureka E317

Birth Date: 2/7/2017 Bull 18755737 Tattoo: E317

O C C Eureka 865E  
**Lesikar Eureka Z371**  
 17573968  
 MJB Traveler Lady 398 87921

O C C Backstop 888B  
 Blackbird of R R 1204  
 D H D Traveler 6807  
 HHF Precision Lady 704 398

CED	BW	WW	YW	SC	MILK	SEN			
17	-2.3	34	56	0.37	30	2.3			
CWT	16	MARB	0.2	RE	0.16	\$W	41.15	\$B	65.17
Act. BW		60	Act. WW			Act. YW		678	

Owned by 1860 Farms

TOP 1% CED at +17! If you have some nice heifers, take this one home, his EPD's are herd changing with TOP 1% CED at +17, Top 3% BW, 15% DMI, 15% Milk, 25% CEM & 25% \$EN. With 6 Angus Pathfinders in his 3 generation pedigree; DHD Traveler, OCC Backstop, OCC Emblazon, Blackbird of R R 1204 and A Plus Blackcap 037, that's impressive. Two of which are our in "14 Sires" line up and between them they have over 20,000 calves on the ground, that's proof positive. This one has it on the top & the bottom. Make him your heifer bull.



Lot 90 - Lesikar Eureka E299

## 91 Lesikar Eureka E304

Birth Date: 2/4/2017 Bull 18892012 Tattoo: E304

O C C Eureka 865E  
**Lesikar Eureka Z371**  
 17573968  
 MJB Traveler Lady 398 87921

O C C Backstop 888B  
 Blackbird of R R 1204  
 D H D Traveler 6807  
 HHF Precision Lady 704 398

CED	BW	WW	YW	SC	MILK	SEN			
9	0.7	42	72	-0.13	24	-0.53			
CWT	16	MARB	0.25	RE	0.56	\$W	39.86	\$B	65.46
Act. BW		68	Act. WW		550	Act. YW		805	

Ranked in the Top: 10% \$YG and 20% Fat

## 92 Lesikar Eureka E309

Birth Date: 2/5/2017 Bull 18892016 Tattoo: E309

O C C Eureka 865E  
**Lesikar Eureka Z371**  
 17573968  
 MJB Traveler Lady 398 87921

O C C Backstop 888B  
 Blackbird of R R 1204  
 D H D Traveler 6807  
 HHF Precision Lady 704 398

CED	BW	WW	YW	SC	MILK	SEN			
10	0.9	34	56	-0.16	20	11.68			
CWT	-1	MARB	0.1	RE	0.18	\$W	29.88	\$B	14.82
Act. BW		68	Act. WW		450	Act. YW		650	

Ranked in the Top: 10% \$EN and 20% CED

## 93 Lesikar Eureka E310

Birth Date: 2/5/2017 Bull 18892017 Tattoo: E310

O C C Eureka 865E  
**Lesikar Eureka Z371**  
 17573968  
 MJB Traveler Lady 398 87921

O C C Backstop 888B  
 Blackbird of R R 1204  
 D H D Traveler 6807  
 HHF Precision Lady 704 398

CED	BW	WW	YW	SC	MILK	SEN			
10	0.6	36	55	0.4	23	10.15			
CWT	9	MARB	0.14	RE	0.45	\$W	38.96	\$B	47.24
Act. BW		64	Act. WW		525	Act. YW		685	

Ranked in the Top: 10% \$EN, 20% CED and 15% \$YG

## 94 Lesikar Eureka E311

Birth Date: 2/5/2017 Bull 18892018 Tattoo: E311

O C C Eureka 865E  
**Lesikar Eureka Z371**  
 17573968  
 MJB Traveler Lady 398 87921

O C C Backstop 888B  
 Blackbird of R R 1204  
 D H D Traveler 6807  
 HHF Precision Lady 704 398

CED	BW	WW	YW	SC	MILK	SEN			
11	0.4	47	69	0.34	26	-1.95			
CWT	22	MARB	0.31	RE	0.46	\$W	51.3	\$B	76.1
Act. BW		66	Act. WW		620	Act. YW		765	

Ranked in the Top: 15% CED



# 19 Month Old Bulls

## 95 Lesikar Eureka E865

Birth Date: 2/4/2017 Bull 18892059 Tattoo: E865

O C C Eureka 865E

**Lesikar Eureka A188**

17574004

A Plus Blackcap 0037

G A R Precision 1680

**Lesikar Blackcap T690**

16048810 [AMF-NHF]

A Plus Blackcap 0037

O C C Backstop 888B

Blackbird of R R 1204

N Bar Emulation EXT

G A R Scotch Cap 867

Tehama Bando 155

9J9 G A R 856

N Bar Emulation EXT

G A R Scotch Cap 867

CED	BW	WW	YW	SC	MILK	SEN			
8	2.4	40	67		22	4.32			
CWT	23	MARB	0.38	RE	0.37	\$W	32.65	\$B	81.63
		Act. BW	66	Act. WW	425	Act. YW	560		

Ranked in the Top: 20% \$EN

## 96 Lesikar Eureka E857

Birth Date: 2/20/2017 Bull 18892057 Tattoo: E857

O C C Eureka 865E

**Lesikar Eureka A188**

17573956

A Plus Blackcap 0037

O C C Broadside 876B

**Lesikar Entense Z134**

17573956

Lesikar Entense U713

O C C Backstop 888B

Blackbird of R R 1204

N Bar Emulation EXT

G A R Scotch Cap 867

D H D Traveler 6807

Revolution Rose of R R 9239

Mytty In Focus

Kahn Everelda Entense B050

CED	BW	WW	YW	SC	MILK	SEN			
8	1.2	40	55	-0.18	23	8.13			
CWT	15	MARB	0.23	RE	0.26	\$W	42.28	\$B	54.03
		Act. BW	69	Act. WW	550	Act. YW	600		

Ranked in the Top: 10% \$EN

## 97 Lesikar Practical E308 [DDP]

Birth Date: 2/4/2017 Bull 19183704 Tattoo: E308

O C C Practical 841P

**Lesikar Practical A417**

17574098

A Plus Blackcap 0037

O C C Jupiter 671J

**Lesikar Blackcap Y218**

17175057 [DDP]

G A R Expectation 1643

O C C Focus 813F

O C C Juanada 968G

N Bar Emulation EXT

G A R Scotch Cap 867

O C C Emblazon 854E

O C C Dixie Erica 816B

G A R Expectation 4915

G A R New Design 2609

CED	BW	WW	YW	SC	MILK	SEN			
11	0.5	29	56		17	15.57			
CWT	6	MARB	0.33	RE	0.23	\$W	19.4	\$B	42.88
		Act. BW	60	Act. WW	570	Act. YW			

Ranked in the Top: 4% \$EN and 15% CED



## Lot 97 - Lesikar Practical E308



## Lot 98 - Lesikar Practical E296

## 98 Lesikar Practical E296 [DDP]

Birth Date: 2/5/2017 Bull 18892005 Tattoo: E296

O C C Practical 841P

**Lesikar Practical A417**

17574098

A Plus Blackcap 0037

G A R Predestined

**Lesikar Barbara X107**

16871783 [DDP]

LAR Barbara N112

O C C Focus 813F

O C C Juanada 968G

N Bar Emulation EXT

G A R Scotch Cap 867

B/R New Design 036

G A R Ext 4206

Sitz Traveler 8180

Sedgwicks Barbara 087

CED	BW	WW	YW	SC	MILK	SEN			
7	2.1	41	80	0.81	19	2.57			
CWT	24	MARB	0.46	RE	0.36	\$W	26.47	\$B	90.93
		Act. BW	68	Act. WW	500	Act. YW	820		

Ranked in the Top: 20% \$EN

## 99 Lesikar Paxton E854

Birth Date: 2/18/2017 Bull 18892055 Tattoo: E854

O C C Paxton 730P

**Lesikar Paxton A220**

17820962 [DDF]

LAR Pride N154

Lesikar Rebound X931

**Lesikar Pride A254**

17818557 [DDF]

Lesikar Pride U412

O C C Focus 813F

O C C Blackbird 736K

B/R New Design 036

M A 6127 of 9352 Ext

O C C Emblazon 854E

Sedgwicks Barbara 087

G A R Retail Product

LAR Pride N154

CED	BW	WW	YW	SC	MILK	SEN			
4	1.2	35	64	0.27	18	10.86			
CWT	12	MARB	0.33	RE	0.26	\$W	25.46	\$B	56.38
		Act. BW	69	Act. WW	460	Act. YW	635		

Ranked in the Top: 10% \$EN

## 100 Lesikar Broadside E327 [DDP]

Birth Date: 2/15/2017 Bull 18892031 Tattoo: E327

O C C Broadside 876B

**Lesikar Broadside B545**

17820903

EF Rita 8475

Lesikar Rebound X931

**Lesikar Pride A482**

17818626 [DDP]

LAR Pride P252

D H D Traveler 6807

Revolution Rose of R R 9239

B C Lookout 7024

G A R 6148 Emulation 829

O C C Emblazon 854E

Sedgwicks Barbara 087

B/R New Design 036

M A 6127 of 9352 Ext

CED	BW	WW	YW	SC	MILK	SEN			
7	1.3	42	69		22	3.46			
CWT	15	MARB	0.18	RE	0.28	\$W	38.27	\$B	54.22
		Act. BW	67	Act. WW	535	Act. YW			

Ranked in the Top: 20% \$EN

# 19 Month Old Bulls

## 101 Lesikar Broadside E322

Birth Date: 2/15/2017 Bull 18892026 Tattoo: E322

O C C Broadside 876B  
**Lesikar Broadside B545**  
 17820903  
 EF Rita 8475  
 Lesikar Legacy W607  
**Lesikar Blackcap A513**  
 17818644  
 Lesikar Blackcap X137

D H D Traveler 6807  
 Revolution Rose of R R 9239  
 B C Lookout 7024  
 G A R 6148 Emulation 829  
 O C C Emblazon 854E  
 A Plus Blackcap 0037  
 O C C Glory 950G  
 LAR Blackcap N160

CED	BW	WW	YW	SC	MILK	SEN			
7	1.3	51	73	-0.21	24	-0.97			
CWT	29	MARB	0.24	RE	0.32	\$W	52.49	\$B	86.57
Act. BW		67	Act. WW		620	Act. YW		695	

## 102 Lesikar Emblazon E852

Birth Date: 2/17/2017 Bull 18892053 Tattoo: E852

O C C Emblazon 854E  
**Lesikar Emblazon W604**  
 16663831  
 A Plus Blackcap 0037  
 BR Midland  
**Lesikar Burgess T662**  
 15881575  
 Twin Eagles Burgess 316N

D H D Traveler 6807  
 Dixie Erica of C H 1019  
 N Bar Emulation EXT  
 G A R Scotch Cap 867  
 Twin Valley Precision E161  
 BR Royal Lass 7036-19  
 Leachman Right Time  
 Acf Burgess 9523

CED	BW	WW	YW	SC	MILK	SEN			
9	0.9	44	68	-0.1	21	5.22			
CWT	21	MARB	0.36	RE	0.17	\$W	41.47	\$B	72.27
Act. BW		64	Act. WW		575	Act. YW		650	

Ranked in the Top: 15% SEN

## 103 Lesikar Emblazon E853

Birth Date: 2/17/2017 Bull 18892054 Tattoo: E853

O C C Emblazon 854E  
**Lesikar Emblazon W604**  
 16663831  
 A Plus Blackcap 0037  
 Mytty In Focus  
**Lesikar Entense U713**  
 16107516  
 Kahn Everelda Entense B050

D H D Traveler 6807  
 Dixie Erica of C H 1019  
 N Bar Emulation EXT  
 G A R Scotch Cap 867  
 S A F Focus of E R  
 Mytty Countess 906  
 Baldrige Bob  
 Sitz Everelda Entense 205

CED	BW	WW	YW	SC	MILK	SEN			
11	0.2	50	76	0.1	22	0.39			
CWT	28	MARB	0.4	RE	0.23	\$W	49.41	\$B	90.89
Act. BW		68	Act. WW		600	Act. YW		710	

Ranked in the Top: 15% CED

## 104 Lesikar Emblazon E858 [DDP]

Birth Date: 2/21/2017 Bull 18892058 Tattoo: E858

O C C Emblazon 854E  
**Lesikar Emblazon W604**  
 16663831  
 A Plus Blackcap 0037  
 G A R Retail Product  
**Lesikar Pride U412**  
 16287580 [DDC]  
 LAR Pride N154

D H D Traveler 6807  
 Dixie Erica of C H 1019  
 N Bar Emulation EXT  
 G A R Scotch Cap 867  
 G A R Precision 1680  
 G A R Ext 4927  
 B/R New Design 036  
 M A 6127 of 9352 Ext

CED	BW	WW	YW	SC	MILK	SEN			
7	1	41	64	0.28	23	4.28			
CWT	26	MARB	0.38	RE	0.17	\$W	40.33	\$B	83.04
Act. BW		67	Act. WW		550	Act. YW		630	

Ranked in the Top: 20% SEN

## 105 Lesikar Legacy E328

Birth Date: 2/21/2017 Bull 18892032 Tattoo: E328

O C C Emblazon 854E  
**Lesikar Legacy W607**  
 16663832  
 A Plus Blackcap 0037  
 Lesikar Emblazon X947  
**Lesikar Lady Z388**  
 17573649  
 Lesikar Lady U761

D H D Traveler 6807  
 Dixie Erica of C H 1019  
 N Bar Emulation EXT  
 G A R Scotch Cap 867  
 O C C Emblazon 854E  
 Sedgwicks Barbara 087  
 L A R Faultless N167  
 Twin Eagles Lady 398J

CED	BW	WW	YW	SC	MILK	SEN			
10	0.9	46	78	0.07	27	-7.27			
CWT	26	MARB	0.24	RE	0.46	\$W	45.92	\$B	82.54
Act. BW		61	Act. WW		625	Act. YW		805	

Ranked in the Top: 20% CED

## 106 Lesikar Eureka E312

Birth Date: 2/5/2017 Bull 18892019 Tattoo: E312

O C C Eureka 865E  
**Lesikar Eureka Z371**  
 17573968  
 MJB Traveler Lady 398 87921  
 Bon View New Design 878  
**L A R Erica M86**  
 14483093  
 M A A006 of 380 Saugahatchee

O C C Backstop 888B  
 Blackbird of R R 1204  
 D H D Traveler 6807  
 HHF Precision Lady 704 398  
 B/R New Design 036  
 Bon View Gammer 85  
 Leachman Saugahatchee 3000C  
 M A 9380 of 847 T C Dividend

CED	BW	WW	YW	SC	MILK	SEN			
9	0.4	24	38	-0.11	29	7.83			
CWT	3	MARB	0.08	RE	0.14	\$W	31.57	\$B	29.35
Act. BW		62	Act. WW		415	Act. YW		570	

Ranked in the Top: 10% SEN and 15% DMI

## 107 Lesikar Eureka E313 [DDP]

Birth Date: 2/5/2017 Bull 18892020 Tattoo: E313

O C C Eureka 865E  
**Lesikar Eureka Z371**  
 17573968  
 MJB Traveler Lady 398 87921  
 Bon View New Design 878  
**Lesikar Princess Z387**  
 17573582 [DDP]  
 Sedgwicks Princess 8940

O C C Backstop 888B  
 Blackbird of R R 1204  
 D H D Traveler 6807  
 HHF Precision Lady 704 398  
 B/R New Design 036  
 Bon View Gammer 85  
 Mc Cumber 124 Traveler 212  
 Sedgwicks Princess 8944

CED	BW	WW	YW	SC	MILK	SEN			
7	1.5	35	67	0.77	26	-1.08			
CWT	16	MARB	0.35	RE	0.36	\$W	31.54	\$B	68.03
Act. BW		68	Act. WW		485	Act. YW		820	

Ranked in the Top: 20% SYG





# 19 Month Old Bulls

## 108 Lesikar Eureka E315

Birth Date: 2/6/2017 Bull 18892022 Tattoo: E315

O C C Eureka 865E  
**Lesikar Eureka Z371**  
 17573968

MJB Traveler Lady 398 87921

Mytty In Focus

**Lesikar Belle Z340**  
 17573507

Lesikar Miss EXT X952

O C C Backstop 888B  
 Blackbird of R R 1204  
 D H D Traveler 6807  
 HHF Precision Lady 704 398

S A F Focus of E R  
 Mytty Countess 906  
 C R A Bextor 872 5205 608

EXAR Miss EXT 5821

CED	BW	WW	YW	SC	MILK	SEN			
12	-0.5	39	67	0.43	25	0.28			
CWT	19	MARB	0.45	RE	0.33	\$W	40.09	\$B	77.38
Act. BW		60	Act. WW		515	Act. YW		745	

Ranked in the Top: 10% CED and 15% BW

## 109 Lesikar Eureka E316

Birth Date: 2/6/2017 Bull 18892023 Tattoo: E316

O C C Eureka 865E  
**Lesikar Eureka Z371**  
 17573968

MJB Traveler Lady 398 87921

BR Midland

**Lesikar Dixie Erica X970**  
 16876920

Twin Eagles Dixie Erica 9H

O C C Backstop 888B  
 Blackbird of R R 1204  
 D H D Traveler 6807  
 HHF Precision Lady 704 398

Twin Valley Precision E161  
 BR Royal Lass 7036-19  
 High Valley 4C6 Ambush  
 O C C Dixie Erica 705F

CED	BW	WW	YW	SC	MILK	SEN			
9	0.7	30	50	-0.17	19	15.52			
CWT	3	MARB	0.4	RE	0.13	\$W	25.34	\$B	37.46
Act. BW		66	Act. WW		450	Act. YW		615	

Ranked in the Top: 4% SEN

## 111 Lesikar Eureka E870

Birth Date: 3/6/2017 Bull 18892061 Tattoo: E870

O C C Eureka 865E  
**Lesikar Eureka A188**  
 17574004

A Plus Blackcap 0037

Lesikar Rebound X931

**Lesikar Erica Z121**  
 17573577

LAR Erica S453

O C C Backstop 888B  
 Blackbird of R R 1204  
 N Bar Emulation EXT  
 G A R Scotch Cap 867

O C C Emblazon 854E  
 Sedgwicks Barbara 087  
 L A R Designer M69  
 LAR Erica M49

CED	BW	WW	YW	SC	MILK	SEN			
7	1.5	43	73	-0.04	17	8.24			
CWT	16	MARB	0.28	RE	0.35	\$W	32.51	\$B	63.97
Act. BW		70	Act. WW		500	Act. YW		700	

Ranked in the Top: 10% SEN

## 113 Lesikar Eureka E886 [ DDF ]

Birth Date: 3/17/2017 Bull 18755742 Tattoo: E886

O C C Eureka 865E  
**Lesikar Eureka A188**  
 17574004

A Plus Blackcap 0037

O C C Glory 950G

**Lesikar Erica Z150**  
 17573989 [DDC]

Lesikar Erica T664

O C C Backstop 888B  
 Blackbird of R R 1204  
 N Bar Emulation EXT  
 G A R Scotch Cap 867

O C C Exodus 712E  
 O C C Dixie Erica 971E  
 Rito 2V1 of 2536 1407  
 Twin Eagles Erica 668K

CED	BW	WW	YW	SC	MILK	SEN			
1	3.6	52	95	0.6	18	10.55			
CWT	27	MARB	0.53	RE	0.35	\$W	44.21	\$B	99.27
Act. BW		69	Act. WW			Act. YW			

Owned by 1860 Farms

Great Grandson of N Bar Emulation EXT & Rito 2V1 of 2536 1407 between them over 43,200 progeny registered with WW. That is some heritage! This is a balancer bull with Top 10% SEN, put him out on grass & let him go to work. GGD is Blackbird of R R 1204 a very nice addition. Lesikar Eureka A188 added to his Top SEN and it will get passed on to his progeny.



## Lot 108 - Lesikar Eureka E315

## 110 Lesikar Eureka E332

Birth Date: 3/9/2017 Bull 18892035 Tattoo: E332

O C C Eureka 865E  
**Lesikar Eureka Z371**  
 17573968

MJB Traveler Lady 398 87921

BR Midland

**MJB Primrose 8359 746**  
 16163749

V A R Primrose 8359

O C C Backstop 888B  
 Blackbird of R R 1204  
 D H D Traveler 6807  
 HHF Precision Lady 704 398

Twin Valley Precision E161  
 BR Royal Lass 7036-19  
 Schoenes Fix It 826  
 N Bar Primrose 2424

CED	BW	WW	YW	SC	MILK	SEN			
13	-0.7	32	57	0.11	22	8.62			
CWT	9	MARB	0.3	RE	0.08	\$W	30.74	\$B	45.29
Act. BW		56	Act. WW		515	Act. YW		685	

Ranked in the Top: 10% CED, 15% BW and 10% SEN

## 112 Lesikar Eureka E867

Birth Date: 3/4/2017 Bull 18755771 Tattoo: E867

O C C Eureka 865E  
**Lesikar Eureka A188**  
 17574004

A Plus Blackcap 0037

Mytty In Focus

**Lesikar Barbara Z110**  
 17573495

Lesikar Barbara X737

O C C Backstop 888B  
 Blackbird of R R 1204  
 N Bar Emulation EXT  
 G A R Scotch Cap 867

S A F Focus of E R  
 Mytty Countess 906  
 S A V 8180 Traveler 004  
 LAR Barbara S465

CED	BW	WW	YW	SC	MILK	SEN			
4	0.6	39	70	0.21	15	15.02			
CWT	22	MARB	0.24	RE	0.62	\$W	29.76	\$B	80.59
Act. BW		67	Act. WW		300	Act. YW		622	

Owned by 1860 Farms

With these 6 Angus Pathfinders you can jump generations ahead with this bull in your herd. Just look at the first 3 Mytty In Focus, N Bar Emulation EXT, SAV 8180 Traveler 004, that is proven production with over 60,000 calves on the ground. These 3 Pathfinder Sires are in all most every Angus Sale Book you have received in the last two months and in many of the preferred "Lots". With 6 EPD's in the Top 35% this one is a Keeper. Top 4% SEN, Top 10% SYG What a Great combo of EPD's! Add to it Top 20% Fat, Top 35% RE, Top 35%BW, Top 35% DMI and you have a "Pasture to Rail" machine.

## 114 Lesikar Paxton E891

Birth Date: 3/23/2017 Bull 18892073 Tattoo: E891

O C C Paxton 730P  
**Lesikar Paxton A220**  
 17820962 [DDF]

LAR Pride N154

O C C Paxton 730P

**Lesikar Annie A329**  
 17820952

Lesikar Annie Y911

O C C Focus 813F  
 O C C Blackbird 736K  
 B/R New Design 036  
 M A 6127 of 9352 Ext

O C C Focus 813F  
 O C C Blackbird 736K  
 O C C Jupiter 671J  
 Garretts E Bar V Annie 3149

CED	BW	WW	YW	SC	MILK	SEN			
7	0.3	46	79	0.45	16	6.87			
CWT	6	MARB	0.24	RE	0.24	\$W	35.42	\$B	42.07
Act. BW		66	Act. WW		475	Act. YW		660	

Ranked in the Top: 15% SEN

# 19 Month Old Bulls

## 115 Lesikar Paxton E894

Birth Date: 3/30/2017 Bull 18755743 Tattoo: E894

O C C Paxton 730P  
**Lesikar Paxton A220**  
 17820962 [DDF]  
 LAR Pride N154  
 O C C Jupiter 671J  
**Lesikar Erica A227**  
 17820923  
 Lesikar Erica Y820

O C C Focus 813F  
 O C C Blackbird 736K  
 B/R New Design 036  
 M A 6127 of 9352 Ext  
 O C C Emblazon 854E  
 O C C Dixie Erica 816B  
 Jauer 353 Traveler 589 27  
 Twin Eagles Erica 668K

CED	BW	WW	YW	SC	MILK	SEN			
5	0.9	41	64	0.75	11	24.29			
CWT	4	MARB	0.31	RE	0.07	SW	32.1	SB	49.78
Act. BW		68	Act. WW		309	Act. YW		526	

Owned by 1860 Farms

Angus Pathfinders that bring it from the "Pasture to the Rail" or any stop in between. Take a look; B/R New Design 036 & Jauer 353 Traveler 589 27 alone add to his proven performance with over 15,000 calves on the ground with weaning weights registered. With TOP 2% SEN at +25.37, Top 10% DMI this bull will add bloodlines that have been long sought after to balance cow size, udders and longevity. He is a Grandson of OCC Paxton 730P and a GG Grandson of OCC Emblazon 854E. Nice, very nice.

## 117 Lesikar Paxton E334

Birth Date: 3/18/2017 Bull 18755739 Tattoo: E334

O C C Paxton 730P  
**Lesikar Paxton Z311**  
 17290572  
 Lesikar Barbara X934  
 Lesikar Rebound X931  
**Lesikar Blackcap B593**  
 18110753  
 Lesikar Blackcap X620

O C C Focus 813F  
 O C C Blackbird 736K  
 O C C Emblazon 854E  
 Sedgwicks Barbara 087  
 O C C Emblazon 854E  
 Sedgwicks Barbara 087  
 O C C Emblazon 854E  
 A Plus Blackcap 0037

CED	BW	WW	YW	SC	MILK	SEN			
13	-0.8	37	61		17	13.44			
CWT	10	MARB	0.03	RE	0.42	SW	31.89	SB	35.8
Act. BW		45	Act. WW			Act. YW		675	

Ranked in the Top: 10% CED, 10% BE and 5% SEN

## 118 Lesikar Broadside E346 [DDP]

Birth Date: 3/22/2017 Bull 18892045 Tattoo: E346

O C C Broadside 876B  
**Lesikar Broadside B545**  
 17820903  
 EF Rita 8475  
 O C C Jupiter 671J  
**Lesikar Rita A458**  
 17820925 [DDP]  
 Lesikar Rita W572

D H D Traveler 6807  
 Revolution Rose of R R 9239  
 B C Lookout 7024  
 G A R 6148 Emulation 829  
 O C C Emblazon 854E  
 O C C Dixie Erica 816B  
 G A R Predestined  
 Twin Lakes 444L Rita 615

CED	BW	WW	YW	SC	MILK	SEN			
10	0.3	42	68	0.19	20	6.53			
CWT	16	MARB	0.2	RE	0.33	SW	38.26	SB	58.75
Act. BW		65	Act. WW		560	Act. YW		685	

Ranked in the Top: 20% CED and 15% SEN

## 120 Lesikar Practical E338

Birth Date: 3/27/2017 Bull 19183400 Tattoo: E338

O C C Practical 841P  
**Lesikar Practical A417**  
 17574098  
 A Plus Blackcap 0037  
 Connealy All Around  
**Lesikar Burgess W568**  
 16658724 [CAF]  
 Lesikar Burgess T667

O C C Focus 813F  
 O C C Juanada 968G  
 N Bar Emulation EXT  
 G A R Scotch Cap 867  
 Connealy Whitman  
 Entrust of Conanga 894  
 BR Midland  
 Twin Eagles Burgess 316N

CED	BW	WW	YW	SC	MILK	SEN			
10	0.4	54	87		20	-1.86			
CWT	30	MARB	0.62	RE	0.36	SW	48.38	SB	108.64
Act. BW		51	Act. WW		650	Act. YW			

Ranked in the Top: 20% CED

## 116 Lesikar Paxton E331

Birth Date: 3/4/2017 Bull 18892034 Tattoo: E331

O C C Paxton 730P  
**Lesikar Paxton Z311**  
 17290572  
 Lesikar Barbara X934  
 O C C Paxton 730P  
**Lesikar Flossie B590**  
 18114382  
 Lesikar Flossie Z302

O C C Focus 813F  
 O C C Blackbird 736K  
 O C C Emblazon 854E  
 Sedgwicks Barbara 087  
 O C C Focus 813F  
 O C C Blackbird 736K  
 O C C Jet Stream 825J  
 M A A006 of 380 Saugahatchee

CED	BW	WW	YW	SC	MILK	SEN			
11	-0.4	33	51	0.37	17	17.68			
CWT	0	MARB	0.11	RE	0.47	SW	29.22	SB	18.74
Act. BW		61	Act. WW		495	Act. YW		590	

Ranked in the Top: 3% SEN, 15% CED, 15% BW and 10% SYG



Lot 116 - Lesikar Paxton 331

## 119 Lesikar Practical E342

Birth Date: 3/20/2017 Bull 18892041 Tattoo: E342

O C C Practical 841P  
**Lesikar Practical A417**  
 17574098  
 A Plus Blackcap 0037  
 O C C Paxton 730P  
**Lesikar Corene Y238**  
 17175220  
 LAR Corene M82

O C C Focus 813F  
 O C C Juanada 968G  
 N Bar Emulation EXT  
 G A R Scotch Cap 867  
 O C C Focus 813F  
 O C C Blackbird 736K  
 Rito 616 of 4B20 6807  
 Twin Eagles Miss 625K

CED	BW	WW	YW	SC	MILK	SEN			
11	-0.4	48	82	0.89	19	1.69			
CWT	30	MARB	0.42	RE	0.35	SW	41.49	SB	100.97
Act. BW		60	Act. WW		655	Act. YW		810	

Ranked in the Top: 15% CED and 15% BW

## 121 Lesikar Emblazon E873 [DDP]

Birth Date: 3/7/2017 Bull 18892063 Tattoo: E873

O C C Emblazon 854E  
**Lesikar Emblazon W604**  
 16663831  
 A Plus Blackcap 0037  
 G A R Predestined  
**Lesikar Blackbird S581**  
 15732955 [DDC-AMF-NHF]  
 LAR Blackbird N101

D H D Traveler 6807  
 Dixie Erica of C H 1019  
 N Bar Emulation EXT  
 G A R Scotch Cap 867  
 B/R New Design 036  
 G A R Ext 4206  
 G A R Precision 1680  
 Twin Eagles Blackbird 702L

CED	BW	WW	YW	SC	MILK	SEN			
6	2.7	43	73	0.38	20	4.35			
CWT	23	MARB	0.44	RE	0.33	SW	31.71	SB	84.02
Act. BW		67	Act. WW		480	Act. YW		650	

Ranked in the Top: 20% SEN



# 19 Month Old Bulls

## 122 Lesikar Emblazon E883

Birth Date: 3/12/2017 Bull 18892069 Tattoo: E883

O C C Emblazon 854E  
**Lesikar Emblazon W604**  
16663831

A Plus Blackcap 0037

L A R Designer M69

**Lesikar Pride S618**  
15760043 [DDF-MIF-OHF]

LAR Pride P238

D H D Traveler 6807  
Dixie Erica of C H 1019  
N Bar Emulation EXT  
G A R Scotch Cap 867

B/R New Design 036

Lady Traveler B57  
B/R New Frontier 095

Sedgwicks Pride 7780

CED	BW	WW	YW	SC	MILK	SEN			
9	0.7	47	81	0.45	20	0.82			
CWT	24	MARB	0.45	RE	0.4	\$W	39.74	\$B	90.19
Act. BW		67	Act. WW		560	Act. YW		760	

## 123 Lesikar Emblazon E884

Birth Date: 3/16/2017 Bull 18892070 Tattoo: E884

O C C Emblazon 854E  
**Lesikar Emblazon W604**  
16663831

A Plus Blackcap 0037

L A R Designer M69

**LAR Erica S453**  
15439206 [DDF]

LAR Erica M49

D H D Traveler 6807  
Dixie Erica of C H 1019  
N Bar Emulation EXT  
G A R Scotch Cap 867

B/R New Design 036

Lady Traveler B57  
L A R Bando 1002

Twin Eagles Dixie Erica 9H

CED	BW	WW	YW	SC	MILK	SEN			
10	0.3	44	78	-0.88	18	4.75			
CWT	20	MARB	0.41	RE	0.31	\$W	34.91	\$B	78.92
Act. BW		68	Act. WW		460	Act. YW		700	

Ranked in the Top: 20% CED and 15% SEN

## 124 Lesikar Eureka E356

Birth Date: 4/16/2017 Bull 18892047 Tattoo: E356

O C C Eureka 865E  
**Lesikar Eureka Z371**  
17573968

MJB Traveler Lady 398 87921

O C C Paxton 730P

**Lesikar Dixie Erica Z326**  
17574058

Lesikar Dixie Erica X970

O C C Backstop 888B  
Blackbird of R R 1204  
D H D Traveler 6807  
HHF Precision Lady 704 398

O C C Focus 813F

O C C Blackbird 736K  
BR Midland

Twin Eagles Dixie Erica 9H

CED	BW	WW	YW	SC	MILK	SEN			
11	-0.3	34	53	0.21	19	14.26			
CWT	2	MARB	0.25	RE	0.24	\$W	31.95	\$B	29.11
Act. BW		62	Act. WW		495	Act. YW		585	

Ranked in the Top: 5% SEN, 15% CED and 20% BW



**Katie and Savannah**

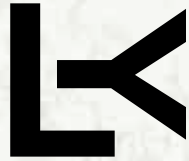


**Luke learning about Hay**

**Follow us on Facebook for up-to-date information regarding upcoming Events.**



**For video of the Bulls, please visit YouTube: Lesikar Ranch Channel**  
Click Subscribe



**LESIKAR NATURAL  
MEATS, LLC  
(817) 738-2177**



**WHERE YOUR MEAT IS ALWAYS  
ANTIBIOTIC AND HORMONE FREE**

All of the beef comes from the Lesikar Ranch Registered Angus Herd. The genetics of these cattle provide for more rapid growth and development. For you this translates into a better product, grown without the use of man-made chemicals and stimulants.



**AGRI ★ TECH**  
**Animal Health**



**Traditionally Serving Your Animal Health & Ranch Supply Needs**

**Website [www.agritechanimalhealth.com](http://www.agritechanimalhealth.com)**

**Central Texas Reps**

**Chad Spitzer 817-307-2817 Mickey Walker 817-988-2466**

**Stephenville & North Central Texas Reps**

**Lana Dill 254-485-4820 Wade Spitzer 817-304-1830**

**Marlin & Waco Rep**

**Ashley Johnson 254-883-5500 LeeAnne Myers 409-782-5538**



## 125 Lesikar Blackcap B444 [ DDF ]

Birth Date: 11/1/2014 Cow 18110706 Tattoo: B444

O C C Emblazon 854E

D H D Traveler 6807

**Lesikar Rebound X931**  
16663820

Dixie Erica of C H 1019

O C C Backstop 888B

Sedgwicks Barbara 087

Sedgwicks Barbara 4171

Bon View New Design 1407

B/R New Design 036

**Lesikar Blackcap Z124**

17573528 [DDP]

Z J H 125P

Bon View Pride 664

Connealy Lead On

Twin Eagles Blackcap 382J

CED	BW		WW		YW		MILK		SEN	
0.25	8	0.37	-0.2	0.31	37	0.28	63	0.16	20	10.42
CWT	15	MARB	0.27	RE	0.35	FAT	0.013			
\$W	35.05	\$F	17.05	\$G	26.11	\$B	69.36			

Owned by 1860 Farms

She is safe in calf to Quaker Hill Rampage. Due Date: March 6, 2019

What a production machine, with the tools to create the cattle you want. With 5 of our "14 Sires" in her Pedigree; B/R New Design 036, D H D Traveler 6807, Bon View New Design 1407, OCC Emblazon 854E & Connealy Lead On. B/R New Design 036 is the sire of GAR Predestined & they are both in the pedigree of the "Lot 1" Goode Quannah 5307 of the 2 Bar Angus fall sale. Her calf is F001 a VAR Reserve 1111 Daughter, with Sedgwicks Barbara & Lesikar Blackcap cow families. F001 has 7 EPD's in the Top 25%: Top 10% \$YG, Top 20% BW, Top 20% \$EN, Top 20% FAT, Top 25% CED, Top 25% DMI and Top 25% \$G. So many more great breeding's are possible with this combination of bloodlines. Safe in calf to Quaker Hill Rampage OA36! Due approx. March 2019 what a 3-in-1!

## 125A 1860 Blackcap Reserve F001

Birth Date: 1/4/2018 Cow 19051321 Tattoo: F001

Sire: **V A R Reserve 1111 [ AMF-CAF-DDF-M1F-NHF ]**  
16916944

BW: 57

CED	BW	WW	YW	SEN
I 9	I -0.1	I 43	I 76	3.3

We have a VAR Reserve 1111 Daughter, with Sedgwicks Barbara & Lesikar Blackcap cow families. 7 EPD's in the Top 25%: Top 10% \$YG, Top 20% BW, Top 20% \$EN, Top 20% FAT, Top 25% CED, Top 25% DMI and 25% \$G. WOW calving ease, with \$YG and \$G. She will be a favorite in your pasture, front or back. Dam is Power House B444

## 127 Lesikar Erica Y918

Birth Date: 11/11/2011 Cow 17175050

O C C Emblazon 854E

D H D Traveler 6807

**O C C Jupiter 671J**  
13509906

Dixie Erica of C H 1019

D H D Traveler 6807

O C C Dixie Erica 816B

Dixie Erica of C H 1019

Twin Valley Precision E161

G A R Precision 1680

**Lesikar Erica U726**

16107500 [NHF-OSF]

Twin Eagles Erica 668K

W C C Blackcap C9

Papa Durabull 9805

G A R New Trend 838

CED	BW		WW		YW		MILK		SEN	
0.24	10	0.4	0.9	0.34	41	0.25	72	0.26	16	19.41
CWT	14	MARB	0.2	RE	0.37	FAT	0.023			
\$W	39.24	\$F	28.77	\$G	21.86	\$B	63.66			

Owned by 1860 Farms

She is safe in calf to Quaker Hill Rampage. Due Date: March 6, 2019

With these 6 Outstanding Angus Pathfinders in her 3 generation pedigree, D H D Traveler 6807 (in twice), Papa Durabull 9805, O C C Emblazon 854E, G A R Precision 1680 & Precision E161, Dixie Erica of C H 1019 you have confirmed progeny by the 10's of thousands. Now bring in the additional cow families of Twin Valley & O C C Dixie Erica 816B and you've got "Pasture to Rail" proven Profit. With Top 5% \$EN, Top 15% CED, Top 25% DMI you've got something here. With an F004 heifer calf at her side in Undeniable Proof of her capabilities, look what genetics she passed on to her progeny. "Kicker, Kicker, Alert, Alert" she is Safe in calf to Quaker Hill Rampage OA36, approx. due date March of 2019. They are all yours, take all three home, let no one take your perfect 3-in-1 from you.

## 126 Lesikar Lucy Y932

Birth Date: 12/16/2011 Cow 17169924 Tattoo: Y932

S S Objective T510 0T26

S S Traveler 6807 T510

**SQ Credence 67S**

15705880 [AMF-CAF-DDF-M1F-NHF-OSF]

S S Miss Rita R011 7R8

Rito 111 of 2536 Rito 616

Rita 3540 of 021 Rito 111

Rita 021 of 7R11 RDA

GDAR SVF Traveler 234D

Traveler 124 G D A R

**LAR Lucy M72**

14248062

G D A R Forever Lady 718

N Bar Emulation EXT

TBR Miss Ext J121

T B R Lucilla B180

CED	BW		WW		YW		MILK		SEN	
0.26	7	0.41	3.2	0.35	51	0.26	80	0.29	19	5.36
CWT	22	MARB	0.67	RE	0.47	FAT	0.009			
\$W	41.12	\$F	31.57	\$G	43.24	\$B	98.85			

Owned by 1860 Farms

She is safe in calf to G A R Absolute D5388. Pasture Exposed: January 4, 2018 to March 27, 2018

12 EPD's in the 45%, Top 35% WW, Top 45% DMI, Top 40% CEM, Top 35% MW, Top 45% MH, Top 25% \$EN, Top 25% Marb, Top 35% RE, Top 20% \$G, Top 20% \$QG, Top 25% \$YG. 7 Angus Pathfinders-N Bar Emulation EXT, Rito 111 of 2536 Rito 616, Traveler 124 G D A R, S S Objective T510 0T26, SQ Credence 67S, GDAR SVF Traveler 234D & S S Traveler 6807 T510. Calf at her side is F002 and has 7 Angus Pathfinders in her pedigree. Snap! Bang! Zoom Batman look at this match up! She is bred to the Calving Ease Specialist GAR Absolute D5388!! This 3-in-1 bundle is going to be special, so very, very, special! He has 17 EPD's in the Top 45%, this breeding is going to be off the hook! He has Top CED of +15, Top 10% BW, Top 10% RE, Top 25% \$EN, Top 25% Marb, Top 35% CW... HOLD-ON wait for it Top 20% WW, Top 20% YW, Top 40% \$W, Top 25% \$G, Top 20% \$F, Top 25% \$QG and Wait for it, TOP 25% \$B!! Calf due Nov/Dec and may be on the ground as we speak.

## 126A 1860Emblazon Lucy F002

Birth Date: 1/13/2018 Bull 19039190 Tattoo: F002

Sire: **Lesikar Emblazon W604**  
16663831

BW: 72

CED	BW	WW	YW	SEN
I 8	I 2.5	I 52	I 80	6.45

With sires like Lesikar Emblazon, OCC Emblazon, DHD Traveler 6807, N Bar Emulation EXT, combined with Rita 3540 of 21 Rito 111, Dixie of Erica, LAR Lucy, you got both sides covered. Top 15% \$EN, Top 15% DMI & Top 35% CED this girl will produce calves on grass and forage. Dam is Y932.

## 127A 1860 Erica Big Time

Birth Date: 1/30/2018 Cow 19044635 Tattoo: F004

Sire: **O C C Big Time 746Z**  
17696450

BW: 67

CED	BW	WW	YW	SEN
I 4	I 2.6	I 54	I 92	7.48

This is an OCC girl all the way with some Erica added in. If you like Ohlde Cattle Company genetics & want to have an OCC Girl to breed a bull to then this is the one! OCC Emblazon 845E, OCC Rear End, OCC Homer, OCC Jupiter 671J, OCC Missing Link 830M, OCC Eureka 865E, OCC Dixie & OCC Dixie. You might as well be standing in Kansas. Look into your Fall Sales Books from Colorado and Kansas (shoot, any sale book that cares about "Pasture to Rail" results). Dam is Y918.





**128 Lesikar Lena Y183 [ DDP ]**

Birth Date: 3/3/2011 Cow 17169911 Tattoo: Y183

B/R New Design 036

V D A R New Trend 315

**LAR Designer N127**

B/R Blackcap Empress 76

14726644 [ DDP ]

O C C Backstop 888B

Sedgwicks Barbara 087

Sedgwicks Barbara 4171

O C C Flashback 824F

O C C Backstop 888B

**Sedgwicks Lena 0680**

Revolution Rose of R R 4290

13769294 [ DDP ]

G D A R Cash Flow 6203

Circle S Lena 068

D S Miss Rachel 873

CED	BW	WW	YW	MILK	SEN
0.2	1	0.41	3.7	0.34	28
0.3	53	0.3	53	0.28	27
CWT	20	MARB	0.15	RE	0.24
\$W	20.97	\$F	6.57	\$G	19.17
				\$B	72.26

Owned by 1860 Farms

She is safe in calf to 3F Epic. Due Date: March 6, 2019

B/R New Design 036 and OCC Backstop 888B add to this girl's ability to calve every year. She has prodigious maternal instincts and with a gorgeous Heifer calf at her side 1860 Lena Traveler F005. This little power house is packed with B/R New Design 036 and DHD Traveler 6807 in her pedigree and is a keeper at 8 months old. Think of the potentials with this youngster! Momma is Safe in calf to 3F Epic 4631, approx. due date March of 2019. This spring will be one to look forward to.



**Cattle that "Work for you"**

**130 Lesikar Pride Y836**

Birth Date: 8/15/2011 Cow 17169870 Tattoo: Y836

Baldrige Kaboom K243 KCF

Jauer 353 Traveler 589 27

**Connealy Kaboom 7324**

Pleasanta of Conanga 736

15148658 [ AMF-CAF-NHF ]

Connealy Leadtime

Black Cami of Conanga 177

Black Max of Conanga 6184

L A R Designer M69

B/R New Design 036

**Lesikar Pride S618**

Lady Traveler B57

15760043 [ DDF-M1F-OHF ]

B/R New Frontier 095

LAR Pride P238

Sedgwicks Pride 7780

CED	BW	WW	YW	MILK	SEN
0.21	5	0.4	1.6	0.33	49
0.21	93	0.21	93	0.26	16
CWT	29	MARB	0.48	RE	0.44
\$W	31.53	\$F	52.13	\$G	36.4
				\$B	107.32

Owned by 1860 Farms

She is safe in calf to Quaker Hill Rampage. Due Date: March 6, 2019

B/R New Design 036, Jauer 353 Traveler 589, Baldrige Kaboom K243 KCF, Connealy Kaboom 7324, add to her lineage along with an 8 month old Bull calf at her side 1860 Absolute Consensus F012. This little guy brings on GAR Absolute D5388, KCF Bennett Absolute & SAV Final Answer 0035 in his back ground

**128A 1860 Lena Tour Duty F005 [ DDP ]**

Birth Date: 2/17/2018 Cow 19222860 Tattoo: F005

Sire:

**R B Tour Of Duty 177 [ AMF-CAF-DDF-M1F-NHF ]**  
16984170

BW: 62

CED	BW	WW	YW	SEN
I 5	I 2.6	I 46	I 83	-12.68

All Star "Top Lot" Producers DHD Traveler & B/R New Design O36 start this one off with a bang! In the Fall Sales Books I received these boys are big on the First pages & are Top Selling producers for a lot of the "Big Time" breeders in Texas and Oklahoma. MJB Traveler Lady, LAR, Sedgwicks & Lena, on the cow side makes for a great momma. Wow! Dam is Y183 a pasture "Fav".

**129 Lesikar Erica A441**

Birth Date: 4/1/2013 Cow 17573575 Tattoo: A441

O C C Emblazon 854E

D H D Traveler 6807

**Lesikar Legacy W607**

Dixie Erica of C H 1019

16663832

N Bar Emulation EXT

A Plus Blackcap 0037

G A R Scotch Cap 867

Bon View New Design 878

B/R New Design 036

**L A R Erica M86**

Bon View Gammer 85

14483093

Leachman Saugahatchee 3000C

M A A006 of 380 Saugahatchee

M A 9380 of 847 T C Dividend

CED	BW	WW	YW	MILK	SEN
0.2	9	0.38	1	0.31	44
0.2	72	0.2	72	0.2	31
CWT	22	MARB	0.18	RE	0.45
\$W	53.43	\$F	28.98	\$G	20.49
				\$B	81.34

Owned by 1860 Farms

She is safe in calf to S A V Brilliance. Due Date: March 6, 2019

Hold On, LOOK at Her Pedigree! D H D Traveler 6807, N Bar Emulation EXT, G A R Scotch Cap 867, B/R New Design 036, Bon View New Design 878, & O C C Emblazon 854E. They are the back bone of so many great breedings! Like GAR Grid Maker GGS to Hover Dam, Connealy Reflection GGS x 2 to Jindra Acclaim and DHD who is GGS to the upcoming Lots 4 & 5 of the Pharo CC Fall sale. These genetics have produced Extreme Profits for lots of cowboys. Calf by her side is F011 with 6 EPD's in the Top 35%. Top 10% CED, Top 20% BW, Top 30% DMI, Top 30% RE, Top 35% \$EN & Top 35% \$W. What a combo package with calving ease, Ribeye, \$EN & \$W. Safe in calf to SAV Brilliance 8077 the sire to so many of Express Ranches "From the Blood of Champions" show calves! Due approx. March 2019

**129A 1860 GAR KCF Bennett F011**

Birth Date: 3/1/2018 Bull 19181492 Tattoo: F011

Sire:

**G A R Absolute D5388 [ OSF ]**  
18279287

BW: 63

CED	BW	WW	YW	SEN
I 12	I 0	I 53	I 93	-2.33

6 EPD's in the Top 35%. Top 10% CED, Top 20% BW, Top 30% DMI, Top 30% RE, Top 35% \$EN & Top 35% \$W. What a combo package with calving ease, Ribeye, \$EN & \$W. His Sire (GAR Absolute D5388), Grand Sire (KCF Bennett Absolute), & GGS (SAV Final Answer 0035), say it all. Now add Emblazon, and Bon View New Design, along with Rita & A Plus Blackcap cow families, and you have a foundation for production. Let's just a "new fav" is in the pasture. Dam is A441.

**130A 1860 Absolute Consensus F012**

Birth Date: 3/2/2018 Bull 19181503 Tattoo: F012

Sire:

**G A R Absolute D5388 [ OSF ]**  
18279287

BW: 58

CED	BW	WW	YW	SEN
I 12	I -0.7	I 54	I 100	-0.08

Fire it up! SAV Final Answer, Baldrige Kaboom, Connealy Kaboom, KCF Bennett Absolute, & GAR Absolute D5388 make for a strong bull. On his mamma's side we added in Lucy, Rita, Conanga & Pride. Top 10% CED, Top 15% BW, Top 30% \$EN, Top 35% YW, Top 35% \$F, make for a Great Package! Absolute, Connealy, & Baldrige this might just be the Final Answer you're looking for. Dam is Y836.





### 131 Lesikar Blackcap Y212

Birth Date: 8/13/2011 Cow 17169433 Tattoo: Y212

S A V 8180 Traveler 004  
**S A V Mandan 5664**  
 15107825 [AMF-CAF-DDF-M1F-NHF-OHF-OSF]  
 S A V Abigale 0451  
 Rito 616 of 4B20 6807  
**Twin Eagles Blackcap 418P**  
 14802510 [AMF-NHF]  
 P A B Blackcap 920

Sitz Traveler 8180  
 Boyd Forever Lady 8003  
 Schoenes Fix It 826  
 S A V Abigale 6062  
 D H D Traveler 6807  
 Rita 4B20 of 0FB1 Bando  
 G A R Precision 1680  
 A Plus Blackcap 8102

CED	BW	WW	YW	MILK	SEN					
0.23	2	0.34	2.8	0.29	47	0.25	88	0.32	18	4.92
CWT	30	MARB	0.46	RE	0.64	FAT	0.012			
SW	33.5	SF	56.52	SG	35.63	SB	119.34			

Owned by 1860 Farms

She is safe in calf to Quaker Hill Rampage. Due Date: March 6, 2019

S A V 8180 Traveler 004, D H D Traveler 6807, Rito 616 of 4B20 6807, G A R Precision 1680 are a great line up. Rito is one of the highest rated bulls for docility in the breed, & she has a 7 month old Bull calf by her side 1860 Paxton Traveler F017. With BR New Design 036 & Paxton 730P in his lineage your off to a good start. Let's bring on a power house in Quaker Hill Rampage OA 36 and you have some extreme prospects for the future. Safe in calf to Quaker Hill Rampage OA36, and your 3rd one hits the ground approximately March of 2019

### 132 Lesikar Barbara Z135

Birth Date: 9/30/2012 Cow 17573498 Tattoo: Z135

O C C Emblazon 854E  
**Lesikar Impact W601**  
 16663828  
 A Plus Blackcap 0037  
 GDAR SVF Traveler 234D  
**Sedgwicks Barbara 5880**  
 13722343  
 Sedgwicks Barbara 588

D H D Traveler 6807  
 Dixie Erica of C H 1019  
 N Bar Emulation EXT  
 G A R Scotch Cap 867  
 Traveler 124 G D A R  
 G D A R Forever Lady 718  
 O C C Backstop 888B  
 Sedgwicks Barbara 7603

CED	BW	WW	YW	MILK	SEN					
0.24	5	0.42	3.7	0.35	44	0.24	80	0.28	21	5.06
CWT	29	MARB	-0.05	RE	0.56	FAT	-0.019			
SW	32.88	SF	38.45	SG	9.64	SB	83.16			

Owned by 1860 Farms

She is safe in calf to Quaker Hill Rampage. Due Date: March 6, 2019

6 EPD's in Top 30%. This girl brings Sedgwicks, A plus and Scotch Cap into one animal; Sedgwicks Barbara 7603, Sedgwicks Barbara 588, Sedgwicks Barbara 5880, A Plus Blackcap 0037, G A R Scotch Cap 867. What a POWER House! She is a GG Grand Daughter of N Bar Emulation EXT & DHD Traveler 6807. Grand Daughter OCC Emblazon 854E & GDAR SVF Traveler 234D and has a F018 calf at her side F018 is proof positive that this is very special as we add in G A R Absolute D5388, K C F Bennett Absolute & S A V Final Answer 0035 this calf is superior, distinct and exceptional. "Warning, Warning, Warning Will Robinson" she is Safe in calf to Quaker Hill Rampage OA36, approx. due date March of 2019. They are all yours, take all three home, let no one take your perfect 3-in-1 from you.

### 132A 1860 Barbara Absolute F018

Birth Date: 3/10/2018 Cow 19181494 Tattoo: F018

Sire: **G A R Absolute D5388 [ OSF ]**  
 18279287

BW: 56

CED	BW	WW	YW	SEN
I 12	I 0.4	I 51	I 93	3.84

WHAT-A-COW! With 8 EPD's in the TOP 45%. Top 10% CED, Top 20% SEN, Top 25% BW, Top 25% RE, Top 35% RADG, Top 30% \$YG, Top 40% DMI & Top 45% \$F. LOOK at the numbers for Calving Ease, Production & Profit! Look at the Angus Pathfinders in her Pedigree; SAV, KCF, Rita, OCC, GAR, Sedgwicks, GAR-EGL, Lucy...WOW! This could be your new "Money Maker". Dam is Z135.

### 131A 1860 Paxton Traveler F017

Birth Date: 3/10/2018 Bull 19184951 Tattoo: F017

Sire: **Lesikar Paxton A220 [ DDF ]**  
 17820962

BW: 67

CED	BW	WW	YW	SEN
I 4	I 1.1	I 41	I 75	9.05

Here is a Grand Son of Paxton, with B/R New Design and SAV 8180 Traveler as GGS. Rito, Blackcap & Pride add in the maternal families. This is Balance and Production with Top 10% \$EN & Top 35% \$YG, combined with Top 35% RADG and you have Beef Production. "Pasture to Rail" results are in his heritage with 10's of thousands of big brothers and sisters on the ground and registered with weaning weights at AAA. Dam is Y212

### 133 Lesikar Erica X695 [ DDF ]

Birth Date: 8/19/2010 Cow 16871962 Tattoo: X695

S A V 8180 Traveler 004  
**S A V Mandan 5664**  
 15107825 [AMF-CAF-DDF-M1F-NHF-OHF-OSF]  
 S A V Abigale 0451  
 LAR Designer N127  
**Lesikar Erica T661**  
 15881585 [DDP]  
 Sedgwicks Erica 6280

Sitz Traveler 8180  
 Boyd Forever Lady 8003  
 Schoenes Fix It 826  
 S A V Abigale 6062  
 B/R New Design 036  
 Sedgwicks Barbara 087  
 TC Dividend 963  
 Sedgwicks Erica 628

CED	BW	WW	YW	MILK	SEN					
0.24	6	0.42	1.8	0.35	39	0.25	71	0.3	29	-5.05
CWT	26	MARB	0.13	RE	0.49	FAT	0.023			
SW	39.72	SF	21.44	SG	17.52	SB	78.02			

Owned by 1860 Farms

She is safe in calf to Quaker Hill Rampage. Due Date: March 6, 2019

Add B/R New Design 036, SAV 8180 Traveler 004, Sitz Traveler 8180, TC Dividend 963 to the Quaker Hill Rampage OA 36 and these genetics have the ability to make explosive progeny. With a beautiful 7 month old heifer calf 1860 Sedgwicks Traveler F019 at her side. If you like heifers with a history, look at her family tree, it provides you a solid pedigree to build on. Safe in calf to Quaker Hill Rampage OA36, approx. due date March of 2019, this will be an exciting birth.

### 133A 1860 Erica Sedgwicks F019

Birth Date: 3/12/2018 Cow 19181506 Tattoo: F019

Sire: **Lesikar Paxton A220 [ DDF ]**  
 17820962

BW: 58

CED	BW	WW	YW	SEN
I 7	I 0.1	I 36	I 64	6.21

If you like cows with a history, look at this family tree; SAV 8180 Traveler 004, OCC Paxton, B/R New Design 036, OCC Blackbird, LAR Pride & Sedgwicks all give you a solid pedigree to build on. Top 15% \$EN, Top 15% DMI & Top 25% \$BW, all add in some great balance. This girl will go to work on grass and make the best of good pasture even in dry years. With SAV 8180 Traveler 004, OCC Paxton, B/R New Design 036, OCC Blackbird, LAR Pride & Sedgwicks this may be the sleeper in the sale just because she is young...don't let that fool you. Sneak in an early bid on her and maybe she's yours to take home. Dam is X695.





### 134 Lesikar Barbara X737

Birth Date: 9/21/2010 Cow 16871786 Tattoo: X737

Sitz Traveler 8180 G D A R Traveler 71  
**S A V 8180 Traveler 004** Sitz Everelda Entense 1137  
 13512009 [AMF-CAF-D2F-DDF-M1F-NHF-OHF-OSF-RDF] A A R New Trend  
 Boyd Forever Lady 8003 S V F Forever Lady 57D  
 G A R Exaltation 3144 N Bar Emulation EXT  
**LAR Barbara S465** G A R Scotch Cap 309  
 15482466 [AMF-NHF] G A R Precision 1680  
 Sedgwicks Barbara 150 Sedgwicks Barbara 158

CED	BW	WW	YW	MILK	SEN
0.26	4	0.44	1.8	0.37	35
0.25	69	0.34	28		-5.62
CWT	27	MARB	0.42	RE	0.37
		FAT	0.02		
\$W	30.58	\$F	19.43	\$G	31.26
		\$B	92.53		

Owned by 1860 Farms

She is safe in calf to Quaker Hill Rampage. Due Date: March 6, 2019

N Bar Emulation EXT and S A V 8180 Traveler 004 are in her pedigree and with a 7 month old Bull calf 1860 N Bar Traveler F020 at her side (look at his genetics). Now Add in Quaker Hill Rampage OA 36 and his power house of genetics that he passes on to his progeny and this is one exhilarating pregnancy. Think of the possibilities when these genetics meet! She is proven and calves on time like clockwork. Safe in calf to Quaker Hill Rampage OA36, approx. due date March of 2019, these are exciting possibilities.

### 134A 1860 N Bar Traveler F020

Birth Date: 3/13/2018 Bull 19181509 Tattoo: F020

Sire: **Lesikar Eureka A188**  
17574004

BW: 71

CED	BW	WW	YW	SEN
I 4	I 2.5	I 39	I 67	1.67

N Bar Emulation EXT, And SAV 8180 Traveler 004 are both highly sought after this fall in all of the "Big Time" Angus Sales because they "equal" big time production & profit. With a total of 7 Pathfinders in his 3 generation Pedigree add to the above; OCC Backstop 888B, GAR Exaltation 3144 & OCC Eureka. 2 Pathfinders are on the maternal side with Blackbird RR of 1204 and GAR Scotch Cap 867. Here is a foundation of great bloodlines and this is your opportunity add them to your breeding program. Dam is X737.

### 136 Lesikar Erica Z150 [ DDC ]

Birth Date: 10/18/2012 Cow 17573989 Tattoo: Z150

O C C Exodus 712E O C C Bonanza 880B  
**O C C Glory 950G** Dixie Erica of C H 1019  
 13096423 O C C Counterbalance 920C  
 O C C Dixie Erica 971E O C C Dixie Erica 907C  
 Rito 2V1 of 2536 1407 Bon View New Design 1407  
**Lesikar Erica T664** G A R Precision 2536  
 15881597 [DDC-AMF-M1F-OSF] Papa Durabull 9805  
 Twin Eagles Erica 668K G A R New Trend 838

CED	BW	WW	YW	MILK	SEN
0.24	0	0.39	4.1	0.33	40
0.25	83	0.26	15		13.78
CWT	24	MARB	0.27	RE	0.41
		FAT	0		
\$W	19.77	\$F	38.28	\$G	26.42
		\$B	82.29		

Owned by 1860 Farms

She is safe in calf to Quaker Hill Rampage. Due Date: March 6, 2019

This your chance to go deep into the great Ohlde Cattle Co. genetics with Bon View New Design 1407 & Papa Durabull 9805 added to the mix. Just look at this packed OCC line-up; OCC Glory 950G, OCC Exodus 712E, OCC Bonanza 880B, OCC Dixie Erica 971E, OCC Counterbalance 920C & OCC Dixie Erica 907C. With an F023 bull calf at her side it is Proven Production, look at that little stinker with 9 EPD's in the Top 45% of the Angus Breed. "Pull back on them reins and steady your horse" she is Safe in calf to Quaker Hill Rampage OA36, and your 3rd one hits the ground approximately March of 2019.

### 135 Lesikar Erica Z373 [ DDP-OSF ]

Birth Date: 11/28/2012 Cow 17573586 Tattoo: Z373

O C C Emblazon 854E D H D Traveler 6807  
**Lesikar Emblazon X947** Dixie Erica of C H 1019  
 16663825 O C C Backstop 888B  
 Sedgwicks Barbara 678 Sedgwicks Barbara 4171  
 SQ Credence 67S S S Objective T510 0T26  
**Lesikar Erica W902** Rita 3540 of 021 Rito 111  
 16658799 [DDP-OSF] G A R Predestined  
 Lesikar Erica S624 Twin Eagles Erica 668K

CED	BW	WW	YW	MILK	SEN
0.19	8	0.36	2.3	0.29	40
0.18	67	0.2	19		12.68
CWT	19	MARB	0.45	RE	0.36
		FAT	0.007		
\$W	34.35	\$F	11.75	\$G	34.52
		\$B	76.81		

Owned by 1860 Farms

She is safe in calf to Quaker Hill Rampage. Due Date: March 6, 2019

An exciting find she is a GG Grand Daughter of D H D Traveler 6807, G A R Predestined, O C C Backstop 888B & S S Objective T510 0T26. Now hang on to your saddle horn she is also the GG Grand Daughter of Dixie Erica of C H 1019, Sedgwicks Barbara 4171, Rita 3540 of 021 Rito 111 & Twin Eagles Erica 668K. Talk about a stacked deck just look at those genetics! Look at the calf by her side F020. F020 adds to the Power with N Bar Emulation EXT, and SAV 8180 Traveler 004 which are both highly sought after this fall in all of the "Big Time" Angus Sales because they "equal" big time production & profit. Here is a foundation of great bloodlines and this is your opportunity add them to your breeding program. She is Safe in calf to Quaker Hill Rampage OA36, approx. due date March of 2019. They are all yours, take all three home, let no one take your perfect 3-in-1 from you.

### 135A 1860 Eureka Traveler F022 [ DDP ]

Birth Date: 3/14/2018 Bull 19181491 Tattoo: F022

Sire: **Lesikar Eureka Z371**  
17573968

BW: 66

CED	BW	WW	YW	SEN
I 9	I 1.7	I 41	I 65	6.95

Production, from "Pasture, to Rail"! This bull has 6 EPD's in the Top 45% of the Angus Breed. Top 15% \$EN, Top 20% \$YG, Top 30% CED, Top 35% DMI Top, Top 40% Fat & 45% CEM. 6 Pathfinders in his 3 generation Pedigree are almost always "At the Top of the Sale". These production specialists are DHD Traveler 6807, OCC Backstop, Emblazon, and Eureka. On his maternal side we bring in the cow families of Blackbird RR 1204, MJB Traveler Lady 398 87921, and Sedgwicks Barbara, keep all of his daughters. Dam is Z373

### 136A 1860 Absolute KCF Ben F023 [ DDP ]

Birth Date: 3/14/2018 Bull 19181489 Tattoo: F023

Sire: **G A R Absolute D5388 [ OSF ]**  
18279287

BW: 63

CED	BW	WW	YW	SEN
I 10	I 0.7	I 49	I 95	6.61

Keep this one's daughters! With 9 EPD's in the Top 45% of the Angus Breed. Make this one your Heifer Bull, for a year or two then bump him up to a herd bull. Top 15% \$EN, Top 20% CED, Top 35% BW, Top 35% RE, Top 45% YW, Top 40% RADG, Top 40% CS, Top 45% \$F, Top 45% \$YG. GAR Absolute, KCF Bennett Absolute, SAV Traveler, OCC Exodus & OCC Glory. OCC Dixie Erica is why you keep all of his daughters. Hand feed him and show him off every time you have company over, your guest will get a kick out of it. Dam is Z150.



### 137 Lesikar Erica B379

Birth Date: 8/31/2014 Cow 18114314 Tattoo: B379

D H D Traveler 6807  
**O C C Anchor 771A**  
 11684971 [CAF-DDF-M1F-OHF]  
 O C C Juanada 709V

Q A S Traveler 23-4  
 Bemindful Maid D H D 0807  
 Cole Creek Oscar 92R  
 Juanada of Rollin Rock 0355

Lesikar Emblazon W604  
**Lesikar Erica Z950**  
 17169855

O C C Emblazon 854E  
 A Plus Blackcap 0037  
 Twin Valley Precision E161  
 Twin Eagles Erica 668K

Lesikar Erica U723

CED	BW	WW	YW	MILK	SEN
0.27	6	0.39	1.3	0.32	32
0.23	54	0.23	18	22.63	
CWT	9	MARB	0.2	RE	-0.01
		FAT	0.01		
\$W	32.34	\$F	8.3	\$G	20.11
		\$B	52.19		

Owned by 1860 Farms

She is safe in calf to S A V Brilliance. Due Date: March 6, 2019

Study her pedigree. DHD Traveler 6807 GS to OCC Homer 650H who is GGS to Lots 1, 2, 3 & 5 of the Fall Pharo Cattle Co. Sale. QAS Traveler 23-4 who is GS to Sitz Traveler 8180 who is GS to SAV Brilliance 8077 used in so many Angus Show Champions. QAS Traveler 23-4 is the GGS to Connealy Onward who is GGS to HA Cowboy Up 5405. Add to the list with OCC Emblazon 854E & OCC Anchor 771A. The Calf by her side F025 is "sharp" with N Bar Emulation EXT & D H D Traveler 6807 who are Top Lot Producers. Just look in the first few pages at of all the Fall sales books. Safe in calf to SAV Brilliance 8077 the sire to so many of Express Ranches "From the Blood of Champions" show calves! Due approx. March 2019

### 137A 1860 N Bar Emulation F025

Birth Date: 3/18/2018 Bull 19181482 Tattoo: F025

Sire: **Lesikar Eureka A188**  
 17574004

BW: 64

CED	BW	WW	YW	SEN
I 6	I 1.8	I 37	I 58	14.88

N Bar Emulation EXT & D H D Traveler 6807, are Very, Very Top Lot Producers. Just look in the first few pages at of all the Fall sales books. Top 4% \$EN, if your girls are getting a little too big to make a living and produce a calf every year on pasture then this bull will add some \$EN to your herd (\$EN expressed in dollars savings per cow per year). OCC Anchor & A Plus Blackcap 0037 are why you retain all of his heifers. Dam is B379.

### 139 Lesikar Dixie Erica Z390

Birth Date: 12/20/2012 Cow 17573538 Tattoo: Z390

Paramont Ambush 2172  
**B C C Bushwacker 41-93**  
 12048084 [AMF-CAF-D2F-DDF-M1F-NHF-OHF-OSF]  
 R C Anita T Bando 918903

Bandolier Eston Durness 42B  
 E W S Miss Burgess 1720  
 Tehama Bando 155  
 R C Traveling Ann 8903

G D A R Rolls Royce 203  
**Twin Eagles Dixie Erica 9152**  
 13572770

G D A R Royce 131  
 G D A R Forever Lady 719  
 Q A S Traveler 23-4  
 Dixie Erica of R R 9275

O C C Dixie Erica 824B

CED	BW	WW	YW	MILK	SEN
0.25	8	0.4	-0.4	0.34	32
0.27	48	0.27	22	11.03	
CWT	15	MARB	0.31	RE	0.14
		FAT	0.008		
\$W	32.71	\$F	-8.24	\$G	26.55
		\$B	63.82		

Owned by 1860 Farms

She is safe in calf to G A R Absolute D5388. Pasture Exposed: June 9, 2018 to July 31, 2018

Q A S Traveler 23-4 is one of the most herd changing Angus to come along. Look in your Fall catalogs & look only at the best they have to offer and this is where you will find Q A S Traveler 23-4! 8 EPD's in the Top 45% this girl brings some serious balance to her progeny. Top 15% BW, Top 15% \$EN, Top 30% CED and so much more. Look at what she has standing beside her F035! F035 is the Great Grand Daughter of D H D Traveler 6807! If you've looked through any of the Fall Sale books you will have seen DHD in the first few opening Lots. Very sought after performance genetics that are passed on to the next generation Top 10% \$EN, combined that with Top 20% DMI, Top 20% BW, Top 25% CED & Top 35% YG & profit going from "pasture to rail". She is bred to the Calving Ease Specialist G A R Absolute D5388!! This 3-in-1 bundle is going to be special due approx. March/April 2019.



### 138 Lesikar Barbara B595 [DDP]

Birth Date: 9/25/2014 Cow 18110754 Tattoo: B595

O C C Emblazon 854E  
**Lesikar Rebound X931**  
 16663820

D H D Traveler 6807  
 Dixie Erica of C H 1019  
 O C C Backstop 888B  
 Sedgwick's Barbara 4171

Sedgwick's Barbara 087

G A R Predestined  
**Lesikar Barbara W549**  
 16658686 [DDC]

B/R New Design 036  
 G A R Ext 4206  
 BR Midland  
 Sedgwick's Barbara 087

L A R Barbara R352

CED	BW	WW	YW	MILK	SEN
0.2	7	0.28	2	0.23	41
0.21	75	0.19	17	12.55	
CWT	14	MARB	0.42	RE	0.44
		FAT	0.032		
\$W	32.07	\$F	27.94	\$G	32.62
		\$B	69.18		

Owned by 1860 Farms

She is safe in calf to Quaker Hill Rampage. Due Date: March 6, 2019

Let talk about just one of her GGS the Great BR Midland. At the "Big Event" this August I watched as Exar Rock Star 7844B sold a 1/2 interest for \$105,000. I was surprised to see his GGS was BR Midland. I was super surprised to see BR Midland in such a high percentage of Express's Donor's and "From the Blood of Champions" Show stock. DHD Traveler 6807, OCC Emblazon 854E, B/R New Design 036 & G A R Predestined. With a 6 month old Heifer at her side 1860 Barbara Traveler F034 and Safe in calf to Quaker Hill Rampage OA36, approx. due date March of 2019. Wowzzer!

### 138A 1860 Barbara Traveler F034 [DDP]

Birth Date: 4/11/2018 Cow 19181483 Tattoo: F034

Sire: **Lesikar Paxton Y201**  
 17175214

BW: 61

CED	BW	WW	YW	SEN
I 8	I 1.3	I 42	I 74	7.8

Great Grand Daughter of G A R Predestined makes this one a keeper! With a Top 10% \$EN and Top 35% CED this will be great "Range Genetics" you can turn out and enjoy. Her "Easy Doing" performance will make for a production machine that'll produce results. Keep all of her heifers and build that CED and \$EN into herd. Dam is B595.

### 139A 1860 Dixie Traveler F035

Birth Date: 4/9/2018 Cow 19181493 Tattoo: F035

Sire: **Lesikar Eureka Z371**  
 17573968

BW: 60

CED	BW	WW	YW	SEN
I 9	I 0	I 36	I 55	7.29

Great Grand Daughter of D H D Traveler 6807! If you've looked through any of the Fall Sale books you will have seen DHD in the first few opening Lots. Very sought after performance genetics that are passed on to the next generation. Top 10% \$EN, combined that with Top 20% DMI, Top 20% BW, Top 25% CED & Top 35% YG & profit going from "pasture to rail". Add in OCC Dixie Erica 824B, Twin Eagles Dixie Erica 9152, Blackbird of R R 1204, & MJB Traveler Lady 398 87921. Slip in an early bid and she could be yours. Dam is Z390.



# Bred / Open Heifers

## 140 Lesikar Barbara Z170

Birth Date: 11/30/2012 Cow 17573503 Tattoo: Z170

O C C Emblazon 854E  
**Lesikar Emblazon W604**  
 16663831  
 A Plus Blackcap 0037  
 Sitz Traveler 8180  
**LAR Barbara R300**  
 15079079  
 Sedgwicks Barbara 087  
 D H D Traveler 6807  
 Dixie Erica of C H 1019  
 N Bar Emulation EXT  
 G A R Scotch Cap 867  
 G D A R Traveler 71  
 Sitz Everelda Entense 1137  
 O C C Backstop 888B  
 Sedgwicks Barbara 4171

CED	BW	WW	YW	MILK	SEN
0.22	6	0.4	2.3	0.33	47
0.23	82	0.25	18	8.23	
CWT	MARB	RE	FAT	0.03	
17	0.19	0.11	0.03	0.03	
\$W	\$F	\$G	\$B	\$B	76.74
38.5	50.76	17.9			

Owned by 1860 Farms

She sells open and ready to breed.

## 141 Lesikar Blackcap Y204 [ DDF ]

Birth Date: 8/9/2011 Cow 17175056 Tattoo: Y204

O C C Emblazon 854E  
**O C C Jupiter 671J**  
 13509906  
 O C C Dixie Erica 816B  
 G A R Expectation 4915  
**G A R Expectation 1643**  
 14504612 [DDC-NHF]  
 G A R New Design 2609  
 D H D Traveler 6807  
 Dixie Erica of C H 1019  
 D H D Traveler 6807  
 Dixie Erica of C H 1019  
 N Bar Emulation EXT  
 G A R Traveler 2421  
 B/R New Design 036  
 G A R Precision 706

CED	BW	WW	YW	MILK	SEN
0.21	14	0.28	-2	0.26	31
0.25	60	0.24	19	16.23	
CWT	MARB	RE	FAT	-0.012	
6	0.26	0.38	0.03	-0.012	
\$W	\$F	\$G	\$B	\$B	51.4
31.6	14.87	28.59			

Owned by 1860 Farms

She is safe in calf to G A R Absolute D5388. Pasture Exposed: January 4, 2018 to March 27, 2018

Hidden jewel of the day, just look at her pedigree, D H D Traveler 6807 (Twice), N Bar Emulation EXT, B/R New Design 036, O C C Emblazon 854E, O C C Jupiter 671J, G A R Expectation 4915 Top 1% CED at +15, Top 2% BW, Top 5% \$YG, Top 10% \$EN, Top 20% CEM, Top 20% Fat & Top 25% DMI What a Production machine and she will pass it on to her progeny as she did with E321 (in this sale). Look at what she passed on to this young man. TOP 2% CED, TOP 2% BW, TOP 4% \$YG, TOP 15% Milk, 15% Fat, 15% \$EN, 15% DMI, TOP 35% CEM & 35% \$W!!! Look, Look, take a gander at this, she is bred to the Calving Ease Specialist G A R Absolute D5388!! This 2-in-1 bundle is going to be special, sooooo special! He has 17 EPD's in the Top 45%, this breeding is going to be off the hook! Calf due October/Nov and may be on the ground as we speak.

## 143 Lesikar Rita E279

Birth Date: 1/1/2017 Cow 18755760 Tattoo: E279

O C C Paxton 730P  
**Lesikar Paxton Z305**  
 17289419  
 Lesikar Barbara X933  
 O C C Glory 950G  
**Lesikar Rita Z306**  
 17289363 [DDF]  
 Lesikar Rita W572  
 O C C Focus 813F  
 O C C Blackbird 736K  
 O C C Emblazon 854E  
 Sedgwicks Barbara 087  
 O C C Exodus 712E  
 O C C Dixie Erica 971E  
 G A R Predestined  
 Twin Lakes 444L Rita 615

CED	BW	WW	YW	MILK	SEN
0.32	10	0.52	0.8	0.44	41
0.38	71	0.27	26	4.92	
CWT	MARB	RE	FAT	0.015	
21	0.53	0.68	0.03	0.015	
\$W	\$F	\$G	\$B	\$B	97.1
48.2	27.83	39.75			

Owned by 1860 Farms

She is safe in calf to 3F Epic. Due Date: March 6, 2019

Talk about a Package! 8 EPD's in the Top 35%! CED + 10, Top 15% \$YG & DMI, Top 15% \$EN, Top 25% RE, Top 30% Milk & Top 35% BW & \$G! This is a calf-producing gold mine! G A R Predestined, OCC Emblazon, OCC Paxton are just for starters. Add in Sedgwicks Barbara 087, a prolific bull producing Mamacita. Wowzzer, she is Confirmed Safe in Calf to 3F Epic 4631 the Angus Sire used in the "Big Event" at Express to produce some of their Top and High selling Lots and is the Sire to EXAR Monumental 6056B (just take a look at him). Your pride and joy will arrive approx. March 2019.

Power House of Genetics! This girl has them all with D H D Traveler 6807, N Bar Emulation EXT, O C C Emblazon 854E & then add to that 3 of the best cow families ever; A Plus Blackcap 0037, G A R Scotch Cap 867 & Sedgwicks Barbara 087 and you have a Power House of Genetics! New calf on the ground F047 LOOK at this "Little Man"! With so many proven progeny from this bull's Parentage, Sire, and Grand Sires it's a "Sure Thing"! Look at his family tree; GAR Absolute D5388, KCF Bennett Absolute, SAV Final Answer 0035, W604, GAR-EGL Protégé, OCC Emblazon 854E, & Sitz Traveler 8180. This is a great 2-in-1 that will change your future herd!

## 140A 1860 Absolute Bennett F047

Birth Date: 8/23/2018 Bull Pending Tattoo: F047

"Take Gamble", "Make a Bet" or call it an "Investment in the Future". LOOK at this "Little Man"! With so many proven progeny from this bull's Parentage, Sire, and Grand Sires it's a "Sure Thing"! GAR Absolute D5388, KCF Bennett Absolute, SAV Final Answer 0035, W604, GAR-EGL Protégé, OCC Emblazon 854E, & Sitz Traveler 8180 add so much history to his pedigree. Now add Lucy, Rita x2, LAR, Barbara, & A Plus Blackcap cow families. Don't let anyone take this one from you, "he's your bull". Dam is Z170.

## 142 Lesikar Lass B413

Birth Date: 9/14/2014 Cow 18110688 Tattoo: B413

O C C Emblazon 854E  
**Lesikar Impact W601**  
 16663828  
 A Plus Blackcap 0037  
 L A R Designer M69  
**Lesikar Lass S617**  
 15760041 [DDF]  
 LAR Lass P230  
 D H D Traveler 6807  
 Dixie Erica of C H 1019  
 N Bar Emulation EXT  
 G A R Scotch Cap 867  
 B/R New Design 036  
 Lady Traveler B57  
 Baldridge Nebraska 901  
 LAR Lass M46

CED	BW	WW	YW	MILK	SEN
0.2	10	0.38	0.4	0.32	33
0.29	64	0.17	18	13.43	
CWT	MARB	RE	FAT	0.005	
13	0.29	0.45	0.03	0.005	
\$W	\$F	\$G	\$B	\$B	73.69
26.14	26.75	28.76			

Owned by 1860 Farms

She is safe in calf to Quaker Hill Rampage. Due Date: March 6, 2019

WOW!! B413 has 6 Angus Pathfinders in just 3 generations, N Bar Emulation EXT, D H D Traveler 6807, B/R New Design 036, Baldridge Nebraska 901, OCC Emblazon 854E & G A R Scotch Cap 867 you know that just permeates power in her offspring. She impressive herself with Top 5% DMI, Top 10% \$EN, Top 15% CED, Top 20% RADG, Top 25% BW, Top 35% RE, and 15% YG. Take them to the pasture and let them make "bank" for your future because she is Safe in Calf to Quaker Hill Rampage OA36, and your little money maker hits the ground approximately March of 2019.

## 144 Lesikar Lucy E851

Birth Date: 2/10/2017 Cow 18755765 Tattoo: E851

O C C Eureka 865E  
**Lesikar Eureka A188**  
 17574004  
 A Plus Blackcap 0037  
 SQ Credence 67S  
**Lesikar Lucy Y932**  
 17169924  
 LAR Lucy M72  
 O C C Backstop 888B  
 Blackbird of R R 1204  
 N Bar Emulation EXT  
 G A R Scotch Cap 867  
 S S Objective T510 0T26  
 Rita 3540 of 021 Rito 111  
 GDAR SVF Traveler 234D  
 TBR Miss Ext J121

CED	BW	WW	YW	MILK	SEN
0.29	9	0.48	3.6	0.41	51
0.36	72	0.25	19	7.35	
CWT	MARB	RE	FAT	0.039	
22	0.45	0.25	0.03	0.039	
\$W	\$F	\$G	\$B	\$B	88.33
41.71	22	30.41			

Owned by 1860 Farms

She is safe in calf to 3F Epic. Due Date: March 6, 2019

A Great Grand Daughter of N Bar Emulation EXT who is known for his herd altering progeny. With 8 Pathfinders in her 3 generations and Confirmed Safe in Calf to 3F Epic 4631 the Angus Sire used in the "Big Event" at Express to produce some of their Top and Highest selling Lots this last August. 3F is also the Sire to EXAR Monumental 6056B (just take a look at him). This March you will have some powerful genetics on the ground and the opportunity to do something very special on this girls 2nd breeding. This may be the one you've been looking for! She is due approx. March 2019.



# Open Heifers

## 145 Lesikar Erica D822D

Birth Date: 11/17/2016 Cow 18755752 Tattoo: D822D

O C C Paxton 730P

O C C Focus 813F

### Lesikar Paxton A220

17820962 [DDF]

O C C Blackbird 736K

B/R New Design 036

LAR Pride N154

M A 6127 of 9352 Ext

Lesikar Impact W601

O C C Emblazon 854E

### Lesikar Erica B403

18110681

A Plus Blackcap 0037

LAR Designer N127

Lesikar Erica U332

LAR Erica M57

CED	BW	WW	YW	MILK	SEN
0.29	0	0.47	1.1	0.39	42
				0.26	16
CWT	14	MARB	0.15	RE	0.23
				FAT	0.003
\$W	40.36	\$F	21.85	\$G	19.39
				\$B	65.18

Owned by 1860 Farms

She sells open and ready to breed.

OCC Paxton 730P, OCC Emblazon 854E, B/R New Design 036 along with the great A Plus Blackcap 0037 make for some very productive Grandparents. A Plus Blackcap 0037 is the full sister to the \$480,000 Coleman Blackcap 0813, the \$300,000 GAR EXT 2104, & the \$120,000 GAR EXT 2114 cows. This girl has Top 3% \$EN & Top 4% DMI means she works on grass. Put her with a great bull, or AI her, she will do the rest. She sells Open and ready to breed to the bull of your choice

## 147 Lesikar Erica E330

Birth Date: 2/28/2017 Cow 18755770 Tattoo: E330

O C C Broadside 876B

D H D Traveler 6807

### Lesikar Broadside B545

17820903

Revolution Rose of R R 9239

B C Lookout 7024

EF Rita 8475

G A R 6148 Emulation 829

Lesikar Legacy W607

O C C Emblazon 854E

### Lesikar Erica A441

17573575

A Plus Blackcap 0037

Bon View New Design 878

L A R Erica M86

M A A006 of 380 Saugahatchee

CED	BW	WW	YW	MILK	SEN
0.31	5	0.52	2.5	0.44	40
				0.39	68
				0.27	32
CWT	14	MARB	0.04	RE	0.55
				FAT	0.004
\$W	45.53	\$F	21.24	\$G	15.69
				\$B	55.32

Owned by 1860 Farms

She sells open and ready to breed.

Start off with some of the best sires in the Angus Breed; D H D Traveler 6807, G A R 6148 Emulation 829, OCC Emblazon 854E & Bon View New Design 878. Hold on to your Cowboy Hat and add in just one of her GGD, A Plus Blackcap 0037 the full sister to the \$480,000 Coleman Blackcap 0813, the \$300,00 GAR EXT 2104 & the \$120,000 GAR EXT 2114 what a great family. This combination of genetics is hard to come by in a Range Ready heifer at East Texas Auction prices. Here she is, open & ready to breed. The breeding prospects are infinite and very enchanting.

## 146 Lesikar Blackcap D825

Birth Date: 11/23/2016 Cow 18755754 Tattoo: D825

O C C Emblazon 854E

D H D Traveler 6807

### Lesikar Rebound X931

16663820

Dixie Erica of C H 1019

O C C Backstop 888B

Sedgwicks Barbara 087

Sedgwicks Barbara 4171

Lesikar Rebound X931

O C C Emblazon 854E

### Lesikar Blackcap B444

18110706 [DDF]

Sedgwicks Barbara 087

Bon View New Design 1407

Lesikar Blackcap Z124

Z J H 125P

CED	BW	WW	YW	MILK	SEN
0.22	9	0.35	-0.5	0.3	35
				0.26	62
				0.17	16
CWT	13	MARB	0.02	RE	0.39
				FAT	0.012
\$W	28.84	\$F	17.68	\$G	12.62
				\$B	52.54

Owned by 1860 Farms

She sells open and ready to breed.

"Here She Is" where can you find a pedigree loaded like this, with DHD Traveler 6807, OCC Emblazon 854E (two times), Bon View New Design 1407 & Sedgwicks Barbara 087 the \$395,000 donor cow of so many great "Pasture to Rail" cattle. Top 10 \$YG means her progeny pay on the rail & Top 20% DMI means she can work on grass. Do you use your best bull or AI her to the Top Sire of your choice? She sells open and ready to go into production.

## 148 Lesikar Erica E882

Birth Date: 3/12/2017 Cow 18892068 Tattoo: E882

O C C Paxton 730P

O C C Focus 813F

### Lesikar Paxton A220

17820962 [DDF]

O C C Blackbird 736K

B/R New Design 036

LAR Pride N154

M A 6127 of 9352 Ext

Lesikar Emblazon W604

O C C Emblazon 854E

### Lesikar Erica A231

17818546

A Plus Blackcap 0037

L A R Bando 1002

LAR Evergreen R301

LAR Evergreen L31

CED	BW	WW	YW	MILK	SEN
0.29	-1	0.5	2.4	0.41	35
				0.36	61
				0.25	16
CWT	11	MARB	0.5	RE	0.07
				FAT	0.003
\$W	24.8	\$F	19.64	\$G	35.41
				\$B	74.49

Owned by 1860 Farms

She sells open and ready to breed.

This is a beautiful heifer that is the right size, & will put a calf on the ground with some vigor in its blood every year. B/R New Design 036, OCC Paxton 730P, Lesikar Paxton A220 & OCC Emblazon 854E in her pedigree will give you a great base to start up a new line of Range Girls. B/R New Design 036 is the sire of the Great Sire GAR Predestined & so many others. With Top 3% \$EN and Top 5% DMI this girl will work on grass & forage and produce the right type of Range Ready cattle you need. What an opportunity to add to your genetics she sells Open and ready to breed to the bull of your choice.



# Thank you for attending the sale!





LIVESTOCK NUTRITION CENTER

## BETTER FEED, BETTER RESULTS

Livestock Nutrition Center specializes in blending customized rations, supplements and premixes to meet the specific nutritional needs of your operation. We understand that management, performance objectives and feeding practices can be vastly different between operations, and that these differences dictate specific nutritional or formulation requirements. Our experienced sales staff will work with you to design a feeding program that is specific to your operation.



LNC-ONLINE.COM

**Champion**  
Genetics

### SEMEN COLLECTION & PROCESSING

At Our Facility or On-Farm

CSS Available Facility

Storage - Shipping

AI Breeding - Embryo Collection

Semen and Embryo Export

18035 FM 17  
CANTON, TX 75103  
PHONE : 903-567-4044  
FAX : 903-567-6587

We appreciate the opportunity to help with **The Lesikar Ranch** and their outstanding cows and herd sires, assisting them in obtaining their genetic goals.

Come by and take a look.



# Reference Sires



Sedgwicks Barbara 087 is one of the foundation donors here in the Lesikar Ranch Program. She has never been heavily promoted and this is her first photo ever taken. She is not only an easy keeper, but a prolific producer as well. She combines the traits of feed efficiency, carcass merit and productivity, which are so essentially vital for ranches trying to make a return on their investments. Throughout her career at Lesikar Ranch, she has produced and sold over \$395,000 worth of progeny marking her place in history here as the #1 money producing dam for the Program.

Sedgwicks Barbara 087 family is a diverse and relatively large one. In 2010, she gave the Lesikar Ranch Program an outstanding set of Flush Brothers, Lesikar Rebound X931 and Lesikar Surefire X126. These two Bulls have been collected and used as part of the AI Program here. Their calves are absolutely outstanding and are always in top of their class. The Barbara Family has its roots deep in our Program and has been extremely beneficial to us.

## Sedgwicks Barbara 087 [ DDF ]

Birth Date: 1/19/2000 Cow 13710141 Tattoo: 087

D H D Traveler 6807

Q A S Traveler 23-4

**O C C Backstop 888B**

Bemindful Maid D H D 0807

11952561

PBC 707 1M F0203

Revolution Rose of R R 9239

Revolution Rose of R R 4064

G D A R Nugget 6180

Rito 2100 G D A R

**Sedgwicks Barbara 4171**

Primrose Lady 338 G D A R

11546060 [DDF]

Molitor Vancer 3105

Sedgwicks Barbara 322

Sedgwicks Barbara 272

CED	BW	WW	YW	MILK	SEN		
1	3.4	31	58	22	9.25		
CWT	17	MARB	-0.12	RE	0.47	FAT	-0.015
SW	19.95	SF	19.41	SG	5.46	SB	59.29

## Lesikar Rebound X931



## Lesikar Rebound X931

Birth Date: 2/13/2010 Bull 16663820 Tattoo: X931

D H D Traveler 6807

Q A S Traveler 23-4

**O C C Emblazon 854E**

Bemindful Maid D H D 0807

12514348 [AMF-CAF-D2F-DDF-M1F-NHF-OHF]

PBC 707 1M F0203

Dixie Erica of C H 1019

Dixie Erica of C H 615

O C C Backstop 888B

D H D Traveler 6807

**Sedgwicks Barbara 087**

Revolution Rose of R R 9239

13710141 [DDF]

G D A R Nugget 6180

Sedgwicks Barbara 4171

Sedgwicks Barbara 322

CED	BW	WW	YW	MILK	SEN		
10	-0.3	31	56	12	22.76		
CWT	6	MARB	-0.04	RE	0.36	FAT	0.013
SW	19.03	SF	6.01	SG	9.19	SB	29.08

## Lesikar Surefire X126



## Lesikar Surefire X126

Birth Date: 11/10/2010 Bull 16873728 Tattoo: X126

D H D Traveler 6807

Q A S Traveler 23-4

**O C C Emblazon 854E**

Bemindful Maid D H D 0807

12514348 [AMF-CAF-D2F-DDF-M1F-NHF-OHF]

PBC 707 1M F0203

Dixie Erica of C H 1019

Dixie Erica of C H 615

O C C Backstop 888B

D H D Traveler 6807

**Sedgwicks Barbara 087**

Revolution Rose of R R 9239

13710141 [DDF]

G D A R Nugget 6180

Sedgwicks Barbara 4171

Sedgwicks Barbara 322

CED	BW	WW	YW	MILK	SEN		
4	3	27	45	18	19.36		
CWT	7	MARB	0.04	RE	0.28	FAT	0.024
SW	15.72	SF	-8.56	SG	12.83	SB	34.26

## Lesikar Emblazon X947

Birth Date: 3/3/2010 Bull 16663825 Tattoo: X947

D H D Traveler 6807

Q A S Traveler 23-4

**O C C Emblazon 854E**

Bemindful Maid D H D 0807

12514348 [AMF-CAF-D2F-DDF-M1F-NHF-OHF]

PBC 707 1M F0203

Dixie Erica of C H 1019

Dixie Erica of C H 615

O C C Backstop 888B

D H D Traveler 6807

**Sedgwicks Barbara 087**

Revolution Rose of R R 9239

13710141 [DDF]

G D A R Nugget 6180

Sedgwicks Barbara 4171

Sedgwicks Barbara 322

CED	BW	WW	YW	MILK	SEN		
9	1.6	29	48	22	13.59		
CWT	4	MARB	-0.01	RE	0.34	FAT	0.007
SW	27.16	SF	-6.31	SG	11.75	SB	25.71

# Semen Available Private Treaty



# Reference Sires

**A Plus Blackcap 0037** is another great foundation donor of the Lesikar Ranch Program. She is the result of one of the most successful matings to date of the great Pathfinder Sire N Bar EXT with the legendary Pathfinder Dam GAR Scotch Cap 867. Full sisters to 0037 include the \$120,000 GAR EXT 2114, the \$300,000 GAR EXT 2104, and the \$480,000 valuation Coleman Blackcap 0813. This outstanding donor ranks 2nd at Lesikar Ranch for progeny sold, bringing in almost \$313,000.

**A Plus Blackcap 0037** is on the same path as the Barbara Family, extending its roots deep in to the Program here. In 2009, 0037 gave the Lesikar Ranch Program a tremendous gift. Three Full Flush Brothers that were powerful and impressive in every way. Lesikar Impact W601, Lesikar Emlazon W604, Lesikar Legacy W607 have been leading the herd in calves for years now. Legacy and Emlazon are used in the pasture to cover any females that AI might not have taken on, while Impact is collected and used solely for AI purposes. Each of these brothers produce calves that are identical.



**Lesikar Impact W601**

## A Plus Blackcap 0037

Birth Date: 2/24/2000 Cow 13651640 Tattoo: 0037

Emulation N Bar 5522 Emulation 31  
**N Bar Emulation EXT** Ankony 8F78 Lass 8F275  
 10776479 [AMF-CAF-D2F-DDF-M1F-NHF-OHF] Emulation 31  
 N Bar Primrose 2424 Primrose N Bar 9962  
 Scotch Cap P S Power Play  
**G A R Scotch Cap 867** Hoff Band 07 of S C 509  
 11047903 PBC 707 1M F0203  
 Blackcap G A R 51 Blackcap G A R 726

CED	BW	WW	YW	MILK	SEN		
7	1.5	49	80	27	-4.6		
CWT	37	MARB	0.4	RE	0.31	FAT	0.034
SW	52.25	SF	42.94	SG	26.91	SB	124.79

## Lesikar Impact W601

Birth Date: 12/22/2009 Bull 16663828 Tattoo: W601

D H D Traveler 6807 Q A S Traveler 23-4  
**O C C Emlazon 854E** Bemindful Maid D H D 0807  
 12514348 [AMF-CAF-D2F-DDF-M1F-NHF-OHF] PBC 707 1M F0203  
 Dixie Erica of C H 1019 Dixie Erica of C H 615  
 N Bar Emulation EXT Emulation N Bar 5522  
**A Plus Blackcap 0037** N Bar Primrose 2424  
 13651640 Scotch Cap  
 G A R Scotch Cap 867 Blackcap G A R 51

CED	BW	WW	YW	MILK	SEN		
12	0.9	45	81	15	11.61		
CWT	24	MARB	0.03	RE	0.31	FAT	0.023
SW	35.29	SF	39.95	SG	10.25	SB	73.64

## Lesikar Legacy W607

Birth Date: 12/31/2009 Bull 16663832 Tattoo: W607

D H D Traveler 6807 Q A S Traveler 23-4  
**O C C Emlazon 854E** Bemindful Maid D H D 0807  
 12514348 [AMF-CAF-D2F-DDF-M1F-NHF-OHF] PBC 707 1M F0203  
 Dixie Erica of C H 1019 Dixie Erica of C H 615  
 N Bar Emulation EXT Emulation N Bar 5522  
**A Plus Blackcap 0037** N Bar Primrose 2424  
 13651640 Scotch Cap  
 G A R Scotch Cap 867 Blackcap G A R 51

CED	BW	WW	YW	MILK	SEN		
11	0.6	59	93	26	-4.24		
CWT	32	MARB	0.32	RE	0.44	FAT	0.036
SW	67.29	SF	51.24	SG	25.12	SB	107.36



**Lesikar Emlazon W604**

## Lesikar Emlazon W604

Birth Date: 12/28/2009 Bull 16663831 Tattoo: W604

D H D Traveler 6807 Q A S Traveler 23-4  
**O C C Emlazon 854E** Bemindful Maid D H D 0807  
 12514348 [AMF-CAF-D2F-DDF-M1F-NHF-OHF] PBC 707 1M F0203  
 Dixie Erica of C H 1019 Dixie Erica of C H 615  
 N Bar Emulation EXT Emulation N Bar 5522  
**A Plus Blackcap 0037** N Bar Primrose 2424  
 13651640 Scotch Cap  
 G A R Scotch Cap 867 Blackcap G A R 51

CED	BW	WW	YW	MILK	SEN		
11	0.5	50	76	18	10.36		
CWT	23	MARB	0.26	RE	0.26	FAT	0.041
SW	49.57	SF	32.94	SG	21.2	SB	85.65

# Semen Available Private Treaty



# Reference Sires

## Lesikar Practical A417

Birth Date: 2/22/2013 Bull 17574098 Tattoo: A417

O C C Focus 813F Basin Rainmaker 654X  
**O C C Practical 841P** Dixie Erica of C H 1019  
 15269772 O C C Eureka 865E  
 O C C Juanada 968G O C C Juanada 774A  
 N Bar Emulation EXT Emulation N Bar 5522  
**A Plus Blackcap 0037** N Bar Primrose 2424  
 13651640 Scotch Cap  
 G A R Scotch Cap 867 Blackcap G A R 51

CED	BW	WW	YW	MILK	SEN		
13	0	41	71	17	15.11		
<b>CWT</b>	<b>21</b>	<b>MARB</b>	<b>0.44</b>	<b>RE</b>	<b>0.2</b>	<b>FAT</b>	<b>0.021</b>
<b>SW</b>	<b>38.69</b>	<b>SF</b>	<b>23.35</b>	<b>SG</b>	<b>31.25</b>	<b>SB</b>	<b>84.1</b>

## Lesikar Eureka Z371

Birth Date: 11/23/2012 Bull 17573968 Tattoo: Z371

O C C Backstop 888B D H D Traveler 6807  
**O C C Eureka 865E** Revolution Rose of R R 9239  
 12514352 [M1F] PBC 707 1M F0203  
 Blackbird of R R 1204 Blackbird of R R 7023  
 D H D Traveler 6807 Q A S Traveler 23-4  
**MJB Traveler Lady 398 87921** Bemindful Maid D H D 0807  
 16346694 [AMF-NHF] G A R Precision 1680  
 HHF Precision Lady 704 398 G A R Ext 704

CED	BW	WW	YW	MILK	SEN		
11	0.2	39	61	28	4.87		
<b>CWT</b>	<b>12</b>	<b>MARB</b>	<b>0.22</b>	<b>RE</b>	<b>0.36</b>	<b>FAT</b>	<b>-0.002</b>
<b>SW</b>	<b>50.48</b>	<b>SF</b>	<b>8.63</b>	<b>SG</b>	<b>24.89</b>	<b>SB</b>	<b>57.4</b>

## Lesikar Paxton A220 [ DDF ]

Birth Date: 8/16/2013 Bull 17820962 Tattoo: A220

O C C Focus 813F Basin Rainmaker 654X  
**O C C Paxton 730P** Dixie Erica of C H 1019  
 14940735 [AMF-CAF-D2F-DDF-M1F-NHF-OHF-OSF] O C C Great Plains 943G  
 O C C Blackbird 736K O C C Blackbird 824G  
 B/R New Design 036 V D A R New Trend 315  
**LAR Pride N154** B/R Blackcap Empress 76  
 14726628 [DDC] N Bar Emulation EXT  
 M A 6127 of 9352 Ext M A 9352 of 163 Travel 71

CED	BW	WW	YW	MILK	SEN		
6	-0.3	34	61	18	16.23		
<b>CWT</b>	<b>6</b>	<b>MARB</b>	<b>0.34</b>	<b>RE</b>	<b>0.16</b>	<b>FAT</b>	<b>0.004</b>
<b>SW</b>	<b>31.58</b>	<b>SF</b>	<b>21.94</b>	<b>SG</b>	<b>29.66</b>	<b>SB</b>	<b>59.78</b>

## Lesikar Paxton Z305

Birth Date: 2/20/2012 Bull 17289419 Tattoo: Z305

O C C Focus 813F Basin Rainmaker 654X  
**O C C Paxton 730P** Dixie Erica of C H 1019  
 14940735 [AMF-CAF-D2F-DDF-M1F-NHF-OHF-OSF] O C C Great Plains 943G  
 O C C Blackbird 736K O C C Blackbird 824G  
 O C C Emblazon 854E D H D Traveler 6807  
**Lesikar Barbara X933** Dixie Erica of C H 1019  
 16663818 O C C Backstop 888B  
 Sedgwicks Barbara 087 Sedgwicks Barbara 4171

CED	BW	WW	YW	MILK	SEN		
11	0.5	34	63	23	12.66		
<b>CWT</b>	<b>11</b>	<b>MARB</b>	<b>0.21</b>	<b>RE</b>	<b>0.38</b>	<b>FAT</b>	<b>0.01</b>
<b>SW</b>	<b>38.49</b>	<b>SF</b>	<b>22.11</b>	<b>SG</b>	<b>23.86</b>	<b>SB</b>	<b>61.89</b>

## Lesikar Eureka A188

Birth Date: 1/14/2013 Bull 17574004 Tattoo: A188

O C C Backstop 888B D H D Traveler 6807  
**O C C Eureka 865E** Revolution Rose of R R 9239  
 12514352 [M1F] PBC 707 1M F0203  
 Blackbird of R R 1204 Blackbird of R R 7023  
 N Bar Emulation EXT Emulation N Bar 5522  
**A Plus Blackcap 0037** N Bar Primrose 2424  
 13651640 Scotch Cap  
 G A R Scotch Cap 867 Blackcap G A R 51

CED	BW	WW	YW	MILK	SEN		
7	1.9	40	59	23	11.24		
<b>CWT</b>	<b>16</b>	<b>MARB</b>	<b>0.29</b>	<b>RE</b>	<b>0.27</b>	<b>FAT</b>	<b>0.019</b>
<b>SW</b>	<b>43.56</b>	<b>SF</b>	<b>9.26</b>	<b>SG</b>	<b>25.81</b>	<b>SB</b>	<b>71.03</b>

## Lesikar Broadside B545

Birth Date: 2/26/2014 Bull 17820903 Tattoo: B545

D H D Traveler 6807 Q A S Traveler 23-4  
**O C C Broadside 876B** Bemindful Maid D H D 0807  
 11952559 [CAF-DDF-M1F-OHF] PBC 707 1M F0203  
 Revolution Rose of R R 9239 Revolution Rose of R R 4064  
 B C Lookout 7024 O C C Legend 616L  
**EF Rita 8475** Gibbet Hill Mignonne E37  
 16208168 [AMF-NHF] Finks 5522-6148  
 G A R 6148 Emulation 829 G A R 6807 Traveler 504

CED	BW	WW	YW	MILK	SEN		
8	1.5	45	72	18	9.38		
<b>CWT</b>	<b>17</b>	<b>MARB</b>	<b>0.17</b>	<b>RE</b>	<b>0.28</b>	<b>FAT</b>	<b>0.008</b>
<b>SW</b>	<b>39.14</b>	<b>SF</b>	<b>17.08</b>	<b>SG</b>	<b>20.14</b>	<b>SB</b>	<b>58.98</b>

## Lesikar Paxton Y201

Birth Date: 8/7/2011 Bull 17175214 Tattoo: Y201

O C C Focus 813F Basin Rainmaker 654X  
**O C C Paxton 730P** Dixie Erica of C H 1019  
 14940735 [AMF-CAF-D2F-DDF-M1F-NHF-OHF-OSF] O C C Great Plains 943G  
 O C C Blackbird 736K O C C Blackbird 824G  
 B C Lookout 7024 O C C Legend 616L  
**EF Rita 8475** Gibbet Hill Mignonne E37  
 16208168 [AMF-NHF] Finks 5522-6148  
 G A R 6148 Emulation 829 G A R 6807 Traveler 504

CED	BW	WW	YW	MILK	SEN		
10	0.3	44	73	17	11		
<b>CWT</b>	<b>7</b>	<b>MARB</b>	<b>0.19</b>	<b>RE</b>	<b>0.27</b>	<b>FAT</b>	<b>0.01</b>
<b>SW</b>	<b>38.8</b>	<b>SF</b>	<b>23.79</b>	<b>SG</b>	<b>22.37</b>	<b>SB</b>	<b>44.46</b>



Luke feeding "Pudding"

# Semen Available Private Treaty

# Reference Sires

## OCC Anchor 771A [CAF-DDF-M1F-OHF]

Birth Date: 3/10/1991 Bull #11684971 Tattoo: 771A

QAS Traveler 23-4  
**DHD Traveler 6807**  
 #10858958  
 Bemindful Maid DHD 0807  
 Cole Creek Oscar 92R  
**OCC Juanada 709V**  
 11012561  
 Juanada of Rollin Rock 0355

Band 234 of Ideal 3163  
 QAS Blackbird Eve 601 1  
 PBC 707 1M F0203  
 Bemindful Maid of RR 1079  
 Baldrige Oscar  
 Cole Creek Elleenshone 923  
 Shoshone Vantage JB23  
 Juanada of Rollin Rock 5138

CED	BW	WW	YW	MILK	SEN
5	2	23	35	10	45.82
CWT	-5	MARB 0.16	RE	0.25	FAT -0.025
SW	19.98	SF -20.68	SG	24.43	SB 19.81

## OCC Broadside 876B [CAF-DDF-M1F-OHF]

Birth Date: 9/3/1992 Bull 11952559 Tattoo: 876B

QAS Traveler 23-4  
**DHD Traveler 6807**  
 #10858958  
 Bemindful Maid DHD 0807  
 PBC 707 1M F0203  
**Revolution Rose of RR 9239**  
 9547870  
 Revolution Rose of RR 4064

Band 234 of Ideal 3163  
 QAS Blackbird Eve 601 1  
 PBC 707 1M F0203  
 Bemindful Maid of RR 1079  
 RR Rito 707  
 Evocate Princess T  
 Knudsens Bonanza 95  
 Revolution Rose of RR 1023

CED	BW	WW	YW	MILK	SEN
10	1.4	30	55	17	19.64
CWT	6	MARB -0.05	RE	0.28	FAT -0.011
SW	23.64	SF -5.84	SG	9.58	SB 18.51

## OCC Paxton 730P [AMF-CAF-D2F-DDF-M1F-NHF-OHF-OSF]

Birth Date: 3/14/2004 Bull #\*14940735 Tattoo: 730P

Basin Rainmaker 654X  
**OCC Focus 813F**  
 12739373  
 Dixie Erica of CH 1019  
 OCC Great Plains 943G  
**OCC Blackbird 736K**  
 13776651  
 OCC Blackbird 824G

Basin Rainmaker DS 380U  
 Basin Bardolene 423U  
 PBC 707 1M F0203  
 Dixie Erica of CH 615  
 N Bar Emulation EXT  
 Dixie Erica of CH 1019  
 OCC Anchor 771A  
 OCC Blackbird 778A

CED	BW	WW	YW	MILK	SEN
13	-1.2	40	66	14	34.36
CWT	-2	MARB 0.11	RE	0.33	FAT 0.019
SW	50.97	SF 14.91	SG	18.86	SB 20.66

## OCC Rancher 680R

Birth Date: 3/16/2005 Bull #\*15289755 Tattoo: 680R

DHD Traveler 6807  
**OCC Emblazon 854E**  
 #\*12514348  
 Dixie Erica of CH 1019  
 N Bar Emulation EXT  
**OCC Juanada 775C**  
 12058322  
 OCC Juanada 709V

QAS Traveler 23-4  
 Bemindful Maid DHD 0807  
 PBC 707 1M F0203  
 Dixie Erica of CH 615  
 Emulation N Bar 5522  
 N Bar Primrose 2424  
 Cole Creek Oscar 92R  
 Juanada of Rollin Rock 0355

CED	BW	WW	YW	MILK	SEN
8	0.7	32	53	17	21.29
CWT	-2	MARB 0.39	RE	0.19	FAT 0.014
SW	29.58	SF -6.44	SG	32.36	SB 29.58

## KCF Bennett Absolute



## OCC Big Time 746Z

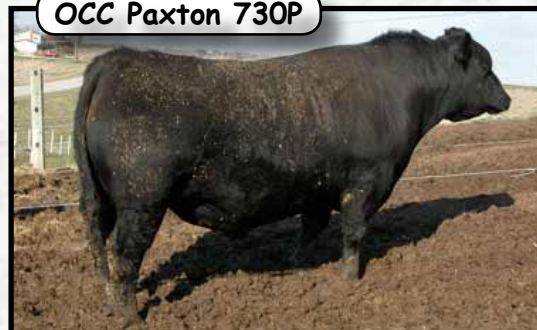
Birth Date: 4/6/2012 Bull \*17696450 Tattoo: 746Z

OCC Homer 650H  
**OCC Rear End 751R**  
 15649977  
 FCC Revolution Rose 995N  
 OCC Missing Link 830M  
**OCC Dixie Erica 771R**  
 \*15919582  
 OCC Dixie Erica 776M

OCC Focus 813F  
 OCC Dixie Erica 816B  
 OCC Joker 620J  
 OCC Revolution Rose 887H  
 OCC Headliner 661H  
 OCC Dixie Erica 946K  
 OCC Eureka 865E  
 OCC Dixie Erica 606G

CED	BW	WW	YW	MILK	SEN
-2	4.1	65	111	13	0.69
CWT	44	MARB 0.18	RE	0.68	FAT -0.006
SW	42.97	SF 80.9	SG	21.75	SB 133.59

## OCC Paxton 730P



## OCC Practical 841P

Birth Date: 9/27/2004 Bull 15269772 Tattoo: 841P

Basin Rainmaker 654X  
**OCC Focus 813F**  
 12739373  
 Dixie Erica of CH 1019  
 OCC Eureka 865E  
**OCC Juanada 968G**  
 13071882  
 OCC Juanada 774A

Basin Rainmaker DS 380U  
 Basin Bardolene 423U  
 PBC 707 1M F0203  
 Dixie Erica of CH 615  
 OCC Backstop 888B  
 Blackbird of RR 1204  
 DHD Traveler 6807  
 OCC Heros Juanada 700Y

CED	BW	WW	YW	MILK	SEN
14	-2.1	19	39	11	36.84
CWT	-7	MARB 0.39	RE	-0.05	FAT 0.033
SW	14.07	SF -14.95	SG	29.52	SB 15.78

## OCC Thumper 819T [M1F]

Birth Date: 9/1/2007 Bull #\*16293203 Tattoo: 819T

OCC Backstop 888B  
**OCC Eureka 865E**  
 #\*12514352  
 Blackbird of RR 1204  
 OCC Anchor 771A  
**OCC Dixie Erica 954K**  
 \*13890929  
 OCC Dixie Erica 907C

DHD Traveler 6807  
 Revolution Rose of RR 9239  
 PBC 707 1M F0203  
 Blackbird of RR 7023  
 DHD Traveler 6807  
 OCC Juanada 709V  
 N Bar Emulation EXT  
 Dixie Erica of CH 1019

CED	BW	WW	YW	MILK	SEN
0	3.1	44	73	15	15.24
CWT	20	MARB 0.16	RE	0.32	FAT 0.011
SW	30.99	SF 18.29	SG	19.41	SB 63.81

## KCF Bennett Absolute [AMF-CAF-DDF-M1F-NHF-OHF]

Birth Date: 3/8/2009 Bull #\*16430795 Tattoo: W299

Sitz Traveler 8180  
**SAV Final Answer 0035**  
 #\*13592905  
 SAV Emulous 8145  
 Wulffs Ext 6106  
**Thomas Miss Lucy 5152**  
 15005375 [AMF-DDF-NHF]  
 Thomas Miss Lucy 3050

GDAR Traveler 71  
 Sitz Everelda Entense 1137  
 Bon View Bando 598  
 SAV Sky Emulous 2124  
 N Bar Emulation EXT  
 Wulffs Erica Dianna C116  
 Rito 616 of 4B20 6807  
 Thomas Miss Lucy 1723

CED	BW	WW	YW	MILK	SEN
11	-0.2	62	115	17	4.04
CWT	44	MARB 0.71	RE	0.74	FAT 0.03
SW	62.79	SF 87.04	SG	42.36	SB 154.21



## G A R Absolute D5388 [ OSF ]

Birth Date: 9/14/2015 Bull 18279287 Tattoo: D5388

S A V Final Answer 0035

Sitz Traveler 8180

**K C F Bennett Absolute**

S A V Emulous 8145

16430795 [AMF-CAF-DDF-M1F-NHF-OHF]

Wulffs Ext 6106

Thomas Miss Lucy 5152

Thomas Miss Lucy 3050

GAR-EGL Protege

Rito 112 of 2536 Rito 616

**Rita 1P26 of 7M89 Protege**

L B 6807 Isabel 339

16877735 [DDF]

G A R Predestined

Rita 7M89 of Rita 5FH8 Pred

Rita 5FH8 of Rita 2V5 FD

CED	BW	WW	YW	MILK	SEN		
15	-1.3	61	112	13	3.74		
CWT	41	MARB	0.7	RE	0.82	FAT	0.054
SW	50.67	SF	77.21	SG	41.08	SB	139.87



G A R Absolute D5388

## Quaker Hill Rampage 0A36 [AMF-CAF-DDF-M1F-NHF]

Birth Date: 9/11/2010 Bull \*16925771 Tattoo: 0A36

Boyd New Day 8005

A A R New Trend

**MCC Daybreak**

S V F Forever Lady 57D

#14777016

S A F Focus of E R

MCC Miss Focus 134

M C C Miss Chief 519

Ideal 4355 of 0T26 2440

S S Objective T510 0T26

**QHF Blackcap 6E2 of 4V16 4355**

Ideal 2440 of 7407 7275

15601886

Rito 2V1 of 2536 1407

QHF Blackcap 4V16 of 1H8

Quaker Hill Blackcap 1H8

CED	BW	WW	YW	MILK	SEN		
10	2.5	82	140	18	-15.41		
CWT	61	MARB	0.45	RE	1.36	FAT	-0.07
SW	67.55	SF	110.58	SG	42.04	SB	175.02



3F Epic 4631

## 3F Epic 4631 [NHC-AMF-CAF-DDF-M1F-OHF-OSF]

Birth Date: 1/25/2014 Bull 17950219 Tattoo: 4631

Connealy Final Product

Connealy Product 568

**Varilek Product 2010 04**

Ebonista of Conanga 471

\*17310103

S A V Bismarck 5682

Varilek Pearl 0006 014

Varilek Pearl 8115 825

EF Complement 8088

Basin Franchise P142

**Zebo Queen 1072**

EF Everelda Entense 6117

17056212

EXAR New Look 2971

EXG Blackcap 6247 PPC

PPC Classic Blackcap 4980

CED	BW	WW	YW	MILK	SEN		
12	-0.3	89	156	24	-31.5		
CWT	75	MARB	0.82	RE	0.46	FAT	0.074
SW	82.02	SF	137.22	SG	32.14	SB	186.6

## Quaker Hill Rampage 0A36



## S A V Brilliance 8077 [AMF-CAF-DDF-M1F-NHF-OSF]

Birth Date: 2/24/2008 Bull #\*16107774 Tattoo: 8077

G A R Grid Maker

G D A R Traveler 044

**S A V Bismarck 5682**

G A R Precision 2536

#\*15109865 [RDF]

Schoenes Fix It 826

S A V Abigale 0451

S A V Abigale 6062

S A V 8180 Traveler 004

Sitz Traveler 8180

**S A V Blackcap May 5270**

Boyd Forever Lady 8003

15108286

S A F 598 Bando 5175

S A V May 2420

S A V May 7238

CED	BW	WW	YW	MILK	SEN		
10	0.2	49	84	26	11.2		
CWT	29	MARB	0.3	RE	0.57	FAT	0.045
SW	67.88	SF	36.03	SG	25.06	SB	93.14



S A V Brilliance 8077

# Lesikar Ranch

2120 Ridgmar Blvd, Ste 7  
Fort Worth, Texas 76116

