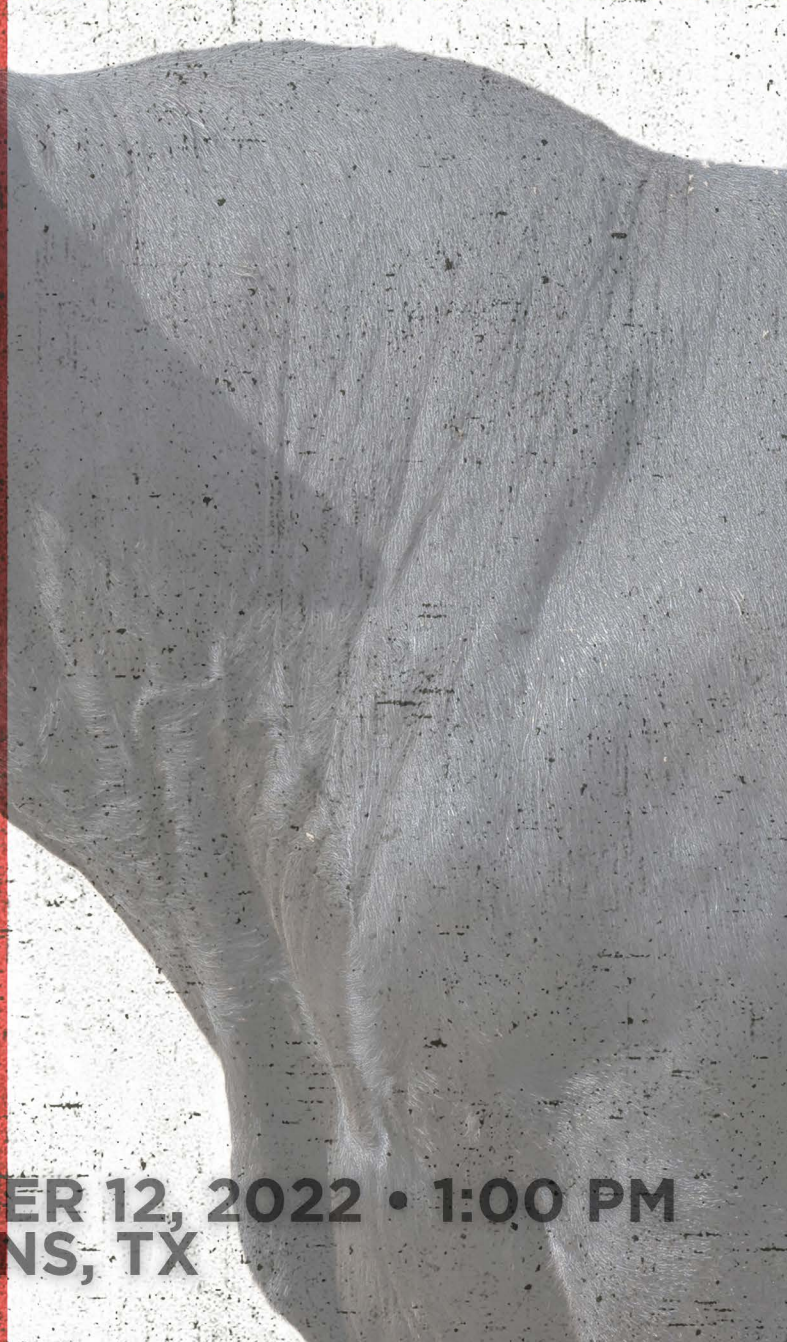




LESIKAR RANCH

BIG BUTTS 7TH ANNUAL
HERD BULL SALE



SATURDAY NOVEMBER 12, 2022 • 1:00 PM
ATHENS, TX

LESIKAR RANCH

A TEXAS TRADITION SINCE 1960



Dear Angus Friends and Fellow Cattlemen,

We would like to take this opportunity to welcome you back to Lesikar Ranch. We invite you to attend the 7th "Big Butts" Bull Sale being held at our Athens Ranch on Saturday, November 12, 2022. The Bulls will be available for viewing by appointment before the sale and all day on Friday, November 11. We will begin by serving a fried catfish lunch at noon, followed by our sale starting at 1:00 pm. If you cannot make the sale in person, please join us online with CCI.Live to view and purchase bulls.

As we enter the start of a new 2022 breeding season, what better time to procure a new bull or upgrade your old one? The bulls we are offering are ready to be turned out and start breeding immediately. They are range ready and can handle any soil condition.

Our genetics are moderate framed, cost efficient, thick and deep. The efficiency of these bulls requires less feed for maintenance or to keep them in shape. Our herd bulls return to the pen in the same condition that they were when they went to pasture to breed for the season. We have integrated a lot of the "older" foundation genetics into our herd to help create these special type of cattle. Our genetics not only give you the opportunity to retain replacements, but also to send to a feedlot and make money there.

The top 2 questions that are asked by breeders looking at our bulls are: Will they work on heifers? and How is their docility? Most of our bulls will work on heifers, while still giving the ability for the calf to grow and develop into an outstanding animal. When it comes to docility, we pride ourselves in this trait. The bulls we develop are all docile, we guaran-tee it. What other ranch is willing to give that guarantee?

We would like to express our sincere gratitude to Martin Lopez, Athens Manager and Jacinto Nunez, Poolville Herd Manager. Our entire breeding program, along with this sale, would not be possible without all of their hard work and dedication.

Lesikar Ranch is a family ranch with family values. Please bring your family and join ours for a full weekend of fun!

We look forward to seeing you!

Jason Lesikar



Lesikar Ranch

Jason Lesikar • 817.726.7998 | Office • 817.738.2177

Lyn & Harriet Lesikar

PO Box 121788, Fort Worth, Texas 76121

www.lesikarranch.com



HARRIET & LYN LESIKAR



**KATIE, JASON, LUKE
& SAVANNAH LESIKAR**



**MARIA & MARTIN LOPEZ
ATHENS MANAGER**



**ANA & JACINTO NUNEZ
POOLVILLE HERD MANAGER**

7TH HERD BULL SALE

SATURDAY, NOVEMBER 12, 2022 • 1 PM
at the ranch near Athens, Texas



AUCTIONEER:
Jerry Lehmann..... 573-999-4759

SALE DAY PHONES:

Jason Lesikar 817-726-7998
Sale Barn Office..... 903-675-SALE
If you wish to make purchased but are unable to attend the sale, please contact Lesikar Ranch, auctioneer, or livestock press representatives to make arrangements.

LIVESTOCK PRESS:

Radale Tiner, *Angus Journal* 979-492-2663
Greg Goodrum, *Weekly Livestock Reporter*.... 903-388-2544
Kenny Dolsen, *Southern Livestock Standard*.... 254-485-8454

SALE LOCATION:

Lesikar Ranch • 12121 CR 3903, Athens, TX 75752
See map on page 2

AIR TRAVEL:

Lesikar Ranch is 1.5 hours from Dallas/Fort Worth International Airport.

ACCOMMODATIONS:

Holiday Inn 903-675-2500
Best Western 903-292-1750

FOOD AND REFRESHMENTS:

Join us at noon on Saturday for a Fried Catfish lunch.

TERMS & CONDITIONS:

All cattle are to be settled for on sale day, prior to load out, unless prior arrangements have been made. Terms of the sale are cash or check. The cattle sell under the Terms and Conditions of the American Angus Association. Supplements to the sale book and announcements made from the block take precedence over what is written in the sale book.

TRUCKING:

All bulls need to be loaded out after the sale. If you are unable to haul the bulls yourself or need to make special arrangements, please contact Jason Lesikar. Lesikar ranch makes no guarantees regarding the cost of shipping. Those arrangements are between buyer and hauler.

HERD HEALTH:

ANGUS MEDIA EPDs contained in the hard copy of this sale book were current as of print date. Digital versions of this sale book can be viewed online at www.angus.org and will have EPDs updated every Friday with the exception of EPD references in footnotes and photos. Any PDF downloads from the website will contain EPDs current as of the date downloaded. References: American Angus Association®, AHIR®, AngusLinkSM, CAB®, Pathfinder®.

All Cattle will be accompanied by proper health certificates for immediate shipment. All bulls are 100% virgin bulls and have had a fertility, Trich and soundness exam within 30 days of the sale. Any bull needing to go outside the state requiring health papers for transport, will be held at our ranch and have paperwork updated post sale.

INSPECTION OF SALE CATTLE:

Bulls can be inspected at any time at Lesikar Ranch starting on Thursday, November, 10. Contact Jason Lesikar for viewing.

DNA Testing:

All the Bulls have been tested through Angus GS for DNA results.

LIABILITY:

All persons attending the sale and related functions do so at their own risk. Lesikar Ranch, staff and sale staff assume no liability, legal or otherwise, for any accidents or injuries that may occur.

View on the Internet:


All cattle have been recorded and the video is available for viewing on youtube.com or CCI.Live. See page 15 for the instructions.

EPDs current as of 10/28/2022. For updated EPDs, view the online salebook at Angus.org.

Auction and minimum prices:

All animals will sell in sale book order.
All bulls will enter the sale ring on sale day.
Bidding will begin at the minimum prices published in our sale book.
Each bull will be sold to the highest bidder.
Bidding will be in person, via phone or over the internet.

Online Bidding:

 View the sale from your phone, tablet or desktop computer and bid with confidence!
Visit www.CCI.Live for complete sale information and online registration.

SALE INFORMATION

Lesikar Breeding Guarantee:

We offer a full breeding season guarantee for any injury that would keep the bull from being a breeder for the first breeding season. All the bulls have passed a breeding soundness exam by our veterinarian. We require that you notify Lesikar Ranch about the bull in case of injury. If a problem occurs, we will give you a suitable replacement or you will receive full credit, minus the salvage value of the original bull, toward another purchase in next year's sale. We also reserve the right to a second opinion by a veterinarian of our choice. In the situation where we need to bring the bull back to the ranch for our vet to examine, it's the buyer's responsibility to get the bull back to our ranch at their expense. We will pay to have our vet examine the bull again, if he passes the exam, it's the buyer's responsibility to come pick up the bull at our ranch at their expense.

Docility Guarantee:

We pride ourselves in the docility of our bulls and therefore offer a docility guarantee. Should the bull become "crazy" in the pens, run at you or from you at any time acting wild, we will give you a suitable replacement or you will receive full credit, minus the salvage value of the original bull, toward another purchase in next year's sale See Guarantee Terms.

Breeding/Docility Guarantee Terms:

1. Lesikar Ranch must be involved in the sale of a returned bull. otherwise, no credit will be issued.
2. A returned bull must weigh 70% of sale day weight upon return in order for any credit to be issued.
3. In the event a bull is re-sold to a third party after the Lesikar Ranch Bull Sale, the guarantee is void.



Driving the science of better breeding

There's little room for error in the cattle business. Producers need the most advanced information to make smart selection decisions, and Angus Genetics Inc. (AGI) provides it through genomic-enhanced expected progeny differences (GE-EPDs).

GE-EPDs have become the industry standard for herd improvement, building on decades of science-backed genetic evaluation tools originated and maintained through the American Angus Association®, home to the largest and ever-growing single-breed beef cattle database.

EPDs that traditionally contained all pedigree, performance and progeny information now also include results from available genomic, or DNA, tests. Breeders who use genomic technology give buyers access to AGI-generated GE-EPDs that provide:

Increased predictability and decreased risk for young and unproven animals due to enhanced accuracy of EPDs

Better characterization of genetics for difficult-to-measure performance traits (such as carcass traits, maternal traits and feed efficiency)

The ability to make more rapid progress for traits that are important to you, due to:

- more accurate selection
- easier identification of genetic outliers
- the ability to propagate young animals with confidence earlier in their lives

In fact, GE-EPDs on unproven animals have the same amount of accuracy as if they had recorded 10-36 calves, depending on the trait. That's valuable insight, offered regularly through the breed's weekly national cattle evaluation.

3

Trait	Progeny Equivalent	Trait	Progeny Equivalent
Calving Ease Direct	26	Heifer Pregnancy	17
Birth Weight	23	Calving Ease Maternal	20
Weaning Weight	27	Milk	36
Yearling Weight	23	Mature Weight	15
Dry Matter Intake	12	Mature Height	9
Scrotal Circumference	15	Carcass Weight	15
Docility	12	Yearling Height	17
Claw Set	10	Carcass Marbling	11
Foot Angle	10	Carcass Ribeye	17
		Carcass Fat	14

How do you know if EPDs are genomic-enhanced?

Ask your breeder, refer to the registration paper, or look for the AGI GE-EPD logo, Angus GS™ powered by partner Neogen GeneSeek or the HD50k by partner Zoetis. These images indicate animals for which low-density or high-density genomic testing has been conducted and incorporated by AGI into GE-EPDs





Lot 1 - Lesikar Payweight H627

4

1 LESIKAR PAYWEIGHT H627

Birth Date: 11-06-2020 Bull 20083509 Tattoo: H627

#**Basin Payweight 006S	#Vermilion Payweight J847	\$M	+69	70%
#**Basin Payweight 1682	+Basin Lucy 3829	\$W	+64	30%
17038724 21AR O Lass 7017	#HARB Pendleton 765 J H	\$F	+59	95%
ANGUSGS	21AR O Lass F24A	\$G	+40	70%
Powered by <i>Meigen GenScan</i>	Jauer 7111 Traveler 353 719	\$B	+98	95%
#Jauer 353 Traveler 589 27	Jauer 6807 Traveler 27 085	\$C	+196	90%
+Lesikar Blackcap Y939	#*N Bar Emulation EXT	\$A:H	+68	70%
17172860 +A Plus Blackcap 0037	#G A R Scotch Cap 867	\$A:J	+31	75%

CED	BW	WW	YW	SC	MILK	RE	MARB	ACT. BW WEIGHT (AS OF 10/20/22)	71
+10	+1	+52	+81	+59	+31	+50	+44	1375	
20%	25%	75%	90%	70%	20%	70%	35%	BASE PRICE	3000

CED	BW	WW	YW	DMI	YH	SC	DOC	HP	CEM	MILK	MW	MH	CW	MARB	RE	FAT	TEND
20	21	59	95	4	78	67	95	39	36	37	83	79	94	78	65	78	16

2 LESIKAR PAYWEIGHT H595

Birth Date: 09-10-2020 Bull 20083482 Tattoo: H595

#**Basin Payweight 006S	#Vermilion Payweight J847	\$M	+79	80%
#**Basin Payweight 1682	+Basin Lucy 3829	\$W	+67	25%
17038724 21AR O Lass 7017	#HARB Pendleton 765 J H	\$F	+60	95%
ANGUSGS	21AR O Lass F24A	\$G	+34	85%
Powered by <i>Meigen GenScan</i>	#+O C C Backstop 888B	\$B	+94	95%
#*O C C Eureka 865E	#Blackbird of R R 1204	\$C	+201	90%
+Lesikar Blackcap A190	#*N Bar Emulation EXT	\$A:H	+65	70%
17573997 +A Plus Blackcap 0037	#G A R Scotch Cap 867	\$A:J	+32	75%

CED	BW	WW	YW	SC	MILK	RE	MARB	ACT. BW WEIGHT (AS OF 10/20/22)	70
+5	+1.2	+56	+88	+1.55	+32	+38	+32	1370	
65%	50%	65%	85%	15%	15%	85%	15%	BASE PRICE	3000

CED	BW	WW	YW	DMI	YH	SC	DOC	HP	CEM	MILK	MW	MH	CW	MARB	RE	FAT	TEND
53	35	40	89	37	84	8	3	49	66	28	77	84	82	76	77	70	90

  @lesikarranch

For up-to-date information regarding upcoming events, check out our Facebook and Instagram!

3 LESIKAR CAPITALIST H588

Birth Date: 09-03-2020 Bull *20083542 Tattoo: H588

*#Connealy Capitalist 028		#*S A V Final Answer 0035		\$M	+64	55%
+*LD Capitalist 316		Prides Pita of Conanga 8821		\$W	+61	40%
17666102	LD Dixie Erica 2053	#C A Future Direction 5321		\$F	+104	15%
ANGUS <small>Powered by Neogen GenesSeek</small>		LD Dixie Erica Oar 0853		\$G	+52	45%
#Lesikar Emblazon W604		+*O C C Emblazon 854E		\$B	+156	25%
Lesikar Juana C493		+A Plus Blackcap 0037		\$C	+266	25%
18110774	LAR Juana R290	L A R Bando 1002		\$A:H	+145	20%
		LAR Juana L22		\$A:J	+132	20%

CED	BW	WW	YW	SC	MILK	RE	MARB	ACT. BW WEIGHT (AS OF 10/20/22)
+8	+1.7	+60	+103	-.01	+28	+83	+57	65
35%	65%	55%	60%	95%	35%	20%	50%	1450
								BASE PRICE 3000

CED	BW	WW	YW	DM	YH	SC	DOC	HP	CEM	MILK	MW	MH	CW	MARB	RE	FAT	TEND
44	80	40	41	33	50	87	55	48	85	22	50	85	20	64	14	59	66

5 LESIKAR CAPITALIST H578

Birth Date: 08-31-2020 Bull 20183602 Tattoo: H578

*#Connealy Capitalist 028		#*S A V Final Answer 0035		\$M	+74	80%
+*LD Capitalist 316		Prides Pita of Conanga 8821		\$W	+55	55%
17666102	LD Dixie Erica 2053	#C A Future Direction 5321		\$F	+75	70%
ANGUS <small>Powered by Neogen GenesSeek</small>		LD Dixie Erica Oar 0853		\$G	+29	90%
*#O C C Paxton 730P		+O C C Focus 813F		\$B	+104	90%
Lesikar Blackcap Y838		O C C Blackbird 736K		\$C	+209	80%
17175216	+Lesikar Blackcap U730	#B C Marathon 7022		\$A:H	+67	70%
		HA Blackcap 1137		\$A:J	+23	80%

CED	BW	WW	YW	SC	MILK	RE	MARB	ACT. BW WEIGHT (AS OF 10/20/22)
+11	-1	+48	+80	+43	+23	+24	+32	72
15%	25%	85%	90%	80%	75%	95%	25%	1430
								BASE PRICE 3000

CED	BW	WW	YW	DM	YH	SC	DOC	HP	CEM	MILK	MW	MH	CW	MARB	RE	FAT	TEND
22	26	72	86	37	99	74	95	36	89	85	93	99	71	75	94	97	86

4 LESIKAR CAPITALIST H575

Birth Date: 08-27-2020 Bull 20083590 Tattoo: H575

*#Connealy Capitalist 028		#*S A V Final Answer 0035		\$M	+54	80%
+*LD Capitalist 316		Prides Pita of Conanga 8821		\$W	+58	45%
17666102	LD Dixie Erica 2053	#C A Future Direction 5321		\$F	+117	4%
ANGUS <small>Powered by Neogen GenesSeek</small>		LD Dixie Erica Oar 0853		\$G	+42	65%
#Jauer 353 Traveler 589 27		Jauer 7111 Traveler 353 719		\$B	+159	25%
+Lesikar Blackcap Y812		Jauer 6807 Traveler 27 085		\$C	+260	30%
16873716	+A Plus Blackcap 0037	#*N Bar Emulation EXT		\$A:H	+134	25%
		#G A R Scotch Cap 867		\$A:J	+143	15%

CED	BW	WW	YW	SC	MILK	RE	MARB	ACT. BW WEIGHT (AS OF 10/20/22)
+1	+3.5	+70	+121	-.12	+23	+86	+36	65
90%	95%	25%	30%	95%	75%	20%	75%	1530
								BASE PRICE 3000

CED	BW	WW	YW	DM	YH	SC	DOC	HP	CEM	MILK	MW	MH	CW	MARB	RE	FAT	TEND
90	96	8	9	67	14	84	99	33	77	57	9	13	3	83	12	52	66

6 LESIKAR CAPITALIST H587

Birth Date: 09-03-2020 Bull *19991339 Tattoo: H587

*#Connealy Capitalist 028		#*S A V Final Answer 0035		\$M	+63	95%
+*LD Capitalist 316		Prides Pita of Conanga 8821		\$W	+69	20%
17666102	LD Dixie Erica 2053	#C A Future Direction 5321		\$F	+73	75%
ANGUS <small>Powered by Neogen GenesSeek</small>		LD Dixie Erica Oar 0853		\$G	+23	95%
*#O C C Emblazon 854E		+*O C C Jupiter 671J		\$B	+95	95%
Lesikar Blackcap C657C		+O C C Dixie Erica 816B		\$C	+186	95%
18515142	Lesikar Blackcap Y892	O C C Legend 616L		\$A:H	+50	80%
		+Lesikar Blackcap W463		\$A:J	+12	85%

CED	BW	WW	YW	SC	MILK	RE	MARB	ACT. BW WEIGHT (AS OF 10/20/22)
+10	+1.4	+60	+101	+28	+31	+42	+11	65
20%	55%	55%	65%	85%	20%	80%	50%	1485
								BASE PRICE 3000

CED	BW	WW	YW	DM	YH	SC	DOC	HP	CEM	MILK	MW	MH	CW	MARB	RE	FAT	TEND
11	43	55	80	39	73	74	64	98	83	20	91	86	58	97	72	86	43



Lot 3 - Lesikar Capitalist H588



Lot 8 - Lesikar Capitalist H591

6

7 LESIKAR CAPITALIST H572

Birth Date: 08-20-2020 Bull *20082940 Tattoo: H572

#*Connealy Capitalist 028	#*S A V Final Answer 0035	\$M	+67	80%
+*LD Capitalist 316	Prides Pita of Conanga 8821	\$W	+59	45%
17666102 LD Dixie Erica 2053	#C A Future Direction 5321	\$F	+82	55%
ANGUSGS	LD Dixie Erica Oar 0853	\$G	+39	75%
Powered by <i>Neogen GenScan</i>	#+O C C Emblazon 854E	\$B	+122	75%
#*O C C Jupiter 671J	+O C C Dixie Erica 816B	\$C	+225	70%
Lesikar Blackcap D676	Lesikar Paxton Y835	\$A:H	+121	35%
18514317 Lesikar Blackcap A327	+Lesikar Blackcap Y821	\$A:J	+109	35%

CED	BW	WW	YW	SC	MILK	RE	MARB	ACT. BW WEIGHT (AS OF 10/20/22)	71
+13	+4	+61	+102	+12	+20	+70	+36	1500	
10%	35%	50%	65%	90%	90%	40%	40%	BASE PRICE	3000

CED	BW	WW	YW	DMI	YH	SC	DOC	HP	CEM	MILK	MW	MH	CW	MARB	RE	FAT	TEND
6	38	41	60	40	80	74	74	67	48	80	67	78	65	82	43	70	76

8 LESIKAR CAPITALIST H591

Birth Date: 09-04-2020 Bull 20083562 Tattoo: H591

#*Connealy Capitalist 028	#*S A V Final Answer 0035	\$M	+63	90%
+*LD Capitalist 316	Prides Pita of Conanga 8821	\$W	+76	10%
17666102 LD Dixie Erica 2053	#C A Future Direction 5321	\$F	+98	25%
ANGUSGS	LD Dixie Erica Oar 0853	\$G	+32	90%
Powered by <i>Neogen GenScan</i>	*O C C Headliner 661H	\$B	+130	60%
#*O C C Missing Link 830M	+*O C C Dixie Erica 946K	\$C	+232	60%
+Lesikar Blackcap Y902	#*S Objective T510 OT26	\$A:H	+115	40%
17175138 G A R Objective 1765	+G A R 1407 New Design 2453	\$A:J	+116	30%

CED	BW	WW	YW	SC	MILK	RE	MARB	ACT. BW WEIGHT (AS OF 10/20/22)	65
+9	+8	+72	+129	+1.23	+32	+65	+24	1525	
30%	40%	20%	20%	30%	15%	45%	50%	BASE PRICE	3000

CED	BW	WW	YW	DMI	YH	SC	DOC	HP	CEM	MILK	MW	MH	CW	MARB	RE	FAT	TEND
18	22	40	15	87	52	19	83	32	95	32	53	67	34	93	33	79	11



9 LESIKAR CAPITALIST H825

Birth Date: 09-02-2020 Bull 20083613 Tattoo: H825



ANGUSGS
 Powered by *Meigen GenScan*

+*LD Capitalist 316
 17666102 LD Dixie Erica 2053
 #C A Future Direction 5321
 #C A Future Direction 5321
+Lesikar Ester U738
 16173986 +Thomas Ester 0660
 #B/R New Design 036
 #Thomas Ester 4123

**S A V Final Answer 0035
 Prides Pita of Conanga 8821
 #C A Future Direction 5321
 LD Dixie Erica Oar 0853
 #G A R Precision 1680
 C A Miss Power Fix 308
 #B/R New Design 036
 #Thomas Ester 4123

CED	BW	WW	YW	SC	MILK	RE	MARB	ACT. BW WEIGHT (AS OF 10/20/22)	71
+5	+1.4	+60	+97	+39	+23	+54	+75	1220	
65%	55%	55%	70%	80%	75%	65%	85%	3000	

CED	BW	WW	YW	DMI	YH	SC	DOC	HP	CEM	MILK	MW	MH	CW	MARB	RE	FAT	TEND
27	33	74	80	7	69	63	92	96	69	74	59	62	76	38	74	73	14

12 LESIKAR CAPITALIST H844

Birth Date: 09-24-2020 Bull *20083508 Tattoo: H844

ANGUSGS
 Powered by *Meigen GenScan*

+*LD Capitalist 316
 17666102 LD Dixie Erica 2053
 #C A Future Direction 5321
 LD Dixie Erica Oar 0853
Lesikar Traveler LadyE381
 19183473 +Lesikar Traveler Lady B615
 #S A V Final Answer 0035
 #Sitz Traveler 8180
 S A V Emulous 8145
 #+*O C C Eureka 865E
 +MJB Traveler Lady 398 87921

**S A V Final Answer 0035
 Prides Pita of Conanga 8821
 #C A Future Direction 5321
 LD Dixie Erica Oar 0853
 #Sitz Traveler 8180
 S A V Emulous 8145
 #+*O C C Eureka 865E
 +MJB Traveler Lady 398 87921

CED	BW	WW	YW	SC	MILK	RE	MARB	ACT. BW WEIGHT (AS OF 10/20/22)	71
+10	-7	+65	+109	+1.02	+19	+56	+38	1240	
20%	15%	40%	50%	40%	95%	60%	90%	3000	

CED	BW	WW	YW	DMI	YH	SC	DOC	HP	CEM	MILK	MW	MH	CW	MARB	RE	FAT	TEND
8	11	54	58	39	72	29	84	89	30	83	39	69	61	76	66	92	52

10 LESIKAR CAPITALIST H597

Birth Date: 09-10-2020 Bull 20083586 Tattoo: H597

ANGUSGS
 Powered by *Meigen GenScan*

+*LD Capitalist 316
 17666102 LD Dixie Erica 2053
 #Jauer 353 Traveler 589 27
+Lesikar Blackcap Y824
 16873722 +A Plus Blackcap 0037
 #**N Bar Emulation EXT
 #G A R Scotch Cap 867

**S A V Final Answer 0035
 Prides Pita of Conanga 8821
 #C A Future Direction 5321
 LD Dixie Erica Oar 0853
 Jauer 7111 Traveler 353 719
 Jauer 6807 Traveler 27 085
 #**N Bar Emulation EXT
 #G A R Scotch Cap 867

CED	BW	WW	YW	SC	MILK	RE	MARB	ACT. BW WEIGHT (AS OF 10/20/22)	65
+7	+1.4	+64	+109	+32	+35	+47	+42	1525	
45%	55%	40%	50%	85%	10%	75%	45%	3000	

CED	BW	WW	YW	DMI	YH	SC	DOC	HP	CEM	MILK	MW	MH	CW	MARB	RE	FAT	TEND
69	79	25	35	69	31	57	92	39	56	7	43	48	22	72	75	67	95

13 LESIKAR CAPITALIST H843

Birth Date: 09-25-2020 Bull *20083517 Tattoo: H843

ANGUSGS
 Powered by *Meigen GenScan*

+*LD Capitalist 316
 17666102 LD Dixie Erica 2053
 O C C Practical 841P
Lesikar Evergreen D202
 18895557 Lesikar Evergreen B561
 Lesikar Evergreen Z282Z

**S A V Final Answer 0035
 Prides Pita of Conanga 8821
 #C A Future Direction 5321
 LD Dixie Erica Oar 0853
 +O C C Focus 813F
 O C C Juanada 968G
 +Lesikar Rebound X931
 Lesikar Evergreen Z282Z

CED	BW	WW	YW	SC	MILK	RE	MARB	ACT. BW WEIGHT (AS OF 10/20/22)	71
+9	+4	+49	+82	-.29	+16	+41	+19	1345	
30%	35%	85%	90%	95%	95%	80%	40%	3000	

CED	BW	WW	YW	DMI	YH	SC	DOC	HP	CEM	MILK	MW	MH	CW	MARB	RE	FAT	TEND
18	25	92	91	34	99	94	95	74	86	93	99	98	89	86	87	95	40

11 LESIKAR CAPITALIST H608

Birth Date: 09-22-2020 Bull 20083558 Tattoo: H608

ANGUSGS
 Powered by *Meigen GenScan*

+*LD Capitalist 316
 17666102 LD Dixie Erica 2053
 #Lesikar Legacy W607
Lesikar Princess A428
 17573578 +Twin Eagles Princess 775L

**S A V Final Answer 0035
 Prides Pita of Conanga 8821
 #C A Future Direction 5321
 LD Dixie Erica Oar 0853
 #+O C C Emblazon 854E
 +A Plus Blackcap 0037
 #+GDAR SVF Traveler 234D
 Twin Eagles Princess 8320

CED	BW	WW	YW	SC	MILK	RE	MARB	ACT. BW WEIGHT (AS OF 10/20/22)	70
+7	+4	+60	+102	+91	+23	+74	+68	1385	
45%	35%	55%	65%	50%	75%	30%	65%	3000	

CED	BW	WW	YW	DMI	YH	SC	DOC	HP	CEM	MILK	MW	MH	CW	MARB	RE	FAT	TEND
59	58	49	50	48	39	33	79	81	34	76	59	41	50	50	18	66	81



Lot 11 - Lesikar Capitalist H608

14 LESIKAR CAPITALIST H847

Birth Date: 10-01-2020 Bull 20083600 Tattoo: H847

#*Connealy Capitalist 028	#*S A V Final Answer 0035	\$M	+79	50%
+*LD Capitalist 316	Prides Pita of Conanga 8821	\$W	+61	40%
17666102	#C A Future Direction 5321	\$F	+84	50%
ANGUSGS	LD Dixie Erica Oar 0853	\$G	+48	50%
Powered by <i>Angus Genetics</i>	#B/R New Design 036	\$B	+131	60%
Lesikar Miss X945	+Sedgwicks Barbara 087	\$C	+249	45%
16658862	#+V D A R Ambush 1465 S A F	\$A.H	+93	55%
	W C S Ext R70	\$A.J	+57	65%

CED	BW	WW	YW	SC	MILK	RE	MARB	ACT. BW WEIGHT (AS OF 10/20/22)	BASE PRICE
+6	+1.2	+55	+90	+89	+30	+4.7	+63	71	1475
55%	50%	70%	80%	50%	25%	75%	15%		3000

CED	BW	WW	YW	DMI	YH	SC	DOC	HP	CEM	MILK	MW	MH	CW	MARB	RE	FAT	TEND
66	56	65	95	9	69	35	24	18	23	24	89	89	70	52	89	97	56

17 LESIKAR CAPITALIST H619

Birth Date: 10-21-2020 Bull 20083572 Tattoo: H619

#*Connealy Capitalist 028	#*S A V Final Answer 0035	\$M	+81	35%
+*LD Capitalist 316	Prides Pita of Conanga 8821	\$W	+74	10%
17666102	#C A Future Direction 5321	\$F	+82	55%
ANGUSGS	LD Dixie Erica Oar 0853	\$G	+52	45%
Powered by <i>Angus Genetics</i>	#+O C C Emblazon 854E	\$B	+135	55%
Lesikar Pride Y929	O C C Juanada 968G	\$C	+256	35%
17175075	#Scotch Cap	\$A.H	+115	40%
	M A 6127 of 9352 Ext	\$A.J	+95	40%

CED	BW	WW	YW	SC	MILK	RE	MARB	ACT. BW WEIGHT (AS OF 10/20/22)	BASE PRICE
+9	+9	+63	+105	+38	+33	+5.6	+7.4	83	1440
30%	45%	45%	55%	80%	10%	60%	10%		3000

CED	BW	WW	YW	DMI	YH	SC	DOC	HP	CEM	MILK	MW	MH	CW	MARB	RE	FAT	TEND
10	34	14	30	81	15	55	57	45	67	15	54	44	16	36	52	97	30

15 LESIKAR CAPITALIST H614

Birth Date: 10-16-2020 Bull *20083547 Tattoo: H614

#*Connealy Capitalist 028	#*S A V Final Answer 0035	\$M	+78	70%
+*LD Capitalist 316	Prides Pita of Conanga 8821	\$W	+65	30%
17666102	#C A Future Direction 5321	\$F	+76	70%
ANGUSGS	LD Dixie Erica Oar 0853	\$G	+36	80%
Powered by <i>Angus Genetics</i>	#+O C C Emblazon 854E	\$B	+112	85%
Lesikar Erica B559	+Sedgwicks Barbara 087	\$C	+223	70%
17863017	#B C C Bushwacker 41-93	\$A.H	+102	45%
	A H A Ritos Traveler	\$A.J	+78	50%

CED	BW	WW	YW	SC	MILK	RE	MARB	ACT. BW WEIGHT (AS OF 10/20/22)	BASE PRICE
+6	-.5	+61	+101	-.06	+25	+3.9	+4.2	77	1325
55%	15%	50%	65%	95%	60%	85%	15%		3000

CED	BW	WW	YW	DMI	YH	SC	DOC	HP	CEM	MILK	MW	MH	CW	MARB	RE	FAT	TEND
28	8	60	64	24	95	86	90	12	32	56	65	86	80	65	79	92	43

18 LESIKAR CAPITALIST H851

Birth Date: 10-22-2020 Bull *20083537 Tattoo: H851

#*Connealy Capitalist 028	#*S A V Final Answer 0035	\$M	+75	80%
+*LD Capitalist 316	Prides Pita of Conanga 8821	\$W	+67	25%
17666102	#C A Future Direction 5321	\$F	+77	65%
ANGUSGS	LD Dixie Erica Oar 0853	\$G	+36	80%
Powered by <i>Angus Genetics</i>	#+O C C Focus 813F	\$B	+112	85%
Lesikar Barbara B562	O C C Juanada 968G	\$C	+220	75%
18114400	#+O C C Emblazon 854E	\$A.H	+64	70%
	+Sedgwicks Barbara 087	\$A.J	+23	80%

CED	BW	WW	YW	SC	MILK	RE	MARB	ACT. BW WEIGHT (AS OF 10/20/22)	BASE PRICE
+7	+1.5	+61	+95	+31	+26	+4.2	+3.3	77	1320
45%	60%	50%	75%	85%	50%	80%	20%		3000

CED	BW	WW	YW	DMI	YH	SC	DOC	HP	CEM	MILK	MW	MH	CW	MARB	RE	FAT	TEND
43	65	22	68	52	49	74	79	62	94	36	74	87	28	82	60	50	12

16 LESIKAR CAPITALIST H850

Birth Date: 10-16-2020 Bull *20083521 Tattoo: H850

#*Connealy Capitalist 028	#*S A V Final Answer 0035	\$M	+86	65%
+*LD Capitalist 316	Prides Pita of Conanga 8821	\$W	+74	10%
17666102	#C A Future Direction 5321	\$F	+81	60%
ANGUSGS	LD Dixie Erica Oar 0853	\$G	+44	60%
Powered by <i>Angus Genetics</i>	#+O C C Emblazon 854E	\$B	+125	70%
Lesikar Blackcap D248	+Sedgwicks Barbara 087	\$C	+248	45%
18891941	#+O C C Emblazon 854E	\$A.H	+108	45%
	+A Plus Blackcap 0037	\$A.J	+76	55%

CED	BW	WW	YW	SC	MILK	RE	MARB	ACT. BW WEIGHT (AS OF 10/20/22)	BASE PRICE
+11	+1	+61	+102	+82	+33	+6.5	+5.0	71	1400
15%	25%	50%	65%	55%	10%	45%	5%		3000

CED	BW	WW	YW	DMI	YH	SC	DOC	HP	CEM	MILK	MW	MH	CW	MARB	RE	FAT	TEND
9	28	39	47	72	69	31	42	42	76	11	77	91	29	64	37	86	83



Lot 16 - Lesikar Capitalist H850

19 LESIKAR CAPITALIST H852

Birth Date: 10-19-2020 Bull *20083518 Tattoo: H852

#*Connealy Capitalist 028	#*S A V Final Answer 0035	\$M	+68	85%
+*LD Capitalist 316	Prides Pita of Conanga 8821	\$W	+65	30%
17666102	LD Dixie Erica 2053	\$F	+89	40%
ANGUSGS	#C A Future Direction 5321	\$G	+33	85%
LD Dixie Erica Oar 0853	#O C C Emblazon 854E	\$B	+122	75%
+Lesikar Rebound X931	+Sedgwicks Barbara 087	\$C	+226	70%
*Lesikar Heatherbloom D830	#*O C C Paxton 730P	\$A:H	+116	35%
18891987	Lesikar Heatherbloom B448	\$A:J	+94	40%
	LAR Heatherbloom P224			

CED	BW	WW	YW	SC	MILK	RE	MARB	ACT. BW WEIGHT (AS OF 10/20/22)	BASE PRICE
+14	-7	+65	+108	+25	+21	+64	+27	72	1360
4%	15%	40%	50%	85%	85%	45%	40%	3000	

CED	BW	WW	YW	DMI	YH	SC	DOC	HP	CEM	MILK	MW	MH	CW	MARB	RE	FAT	TEND
19	55	15	41	67	61	72	35	48	88	64	48	79	25	91	29	74	72

22 LESIKAR CAPITALIST H625

Birth Date: 11-03-2020 Bull *20083486 Tattoo: H625

#*Connealy Capitalist 028	#*S A V Final Answer 0035	\$M	+68	95%
+*LD Capitalist 316	Prides Pita of Conanga 8821	\$W	+57	50%
17666102	LD Dixie Erica 2053	\$F	+91	35%
ANGUSGS	#C A Future Direction 5321	\$G	+36	80%
LD Dixie Erica Oar 0853	+Rito 707 of Ideal 3407 7075	\$B	+126	65%
+Lesikar Blackcap F292	*S A V Blackcap May 4136	\$C	+231	60%
19402166	+Lesikar Blackcap Y812	\$A:H	+120	35%
	#Jauer 353 Traveler 589 27	\$A:J	+114	30%
	+A Plus Blackcap 0037			

CED	BW	WW	YW	SC	MILK	RE	MARB	ACT. BW WEIGHT (AS OF 10/20/22)	BASE PRICE
+7	+1.8	+69	+121	+1.01	+17	+92	+1.18	70	1290
45%	65%	30%	30%	40%	95%	15%	40%	3000	

CED	BW	WW	YW	DMI	YH	SC	DOC	HP	CEM	MILK	MW	MH	CW	MARB	RE	FAT	TEND
10	25	53	50	62	86	24	36	36	82	86	61	87	67	94	19	43	61

20 LESIKAR CAPITALIST H860

Birth Date: 10-19-2020 Bull 20083603 Tattoo: H860

#*Connealy Capitalist 028	#*S A V Final Answer 0035	\$M	+68	45%
+*LD Capitalist 316	Prides Pita of Conanga 8821	\$W	+72	15%
17666102	LD Dixie Erica 2053	\$F	+81	60%
ANGUSGS	#C A Future Direction 5321	\$G	+48	50%
LD Dixie Erica Oar 0853	#Connealy Whitman	\$B	+129	65%
+*Connealy All Around	Entrust of Conanga 894	\$C	+235	60%
Lesikar Burgess W568	#BR Midland	\$A:H	+101	50%
16658724	+Lesikar Burgess T667	\$A:J	+82	50%
	+Twin Eagles Burgess 316N			

CED	BW	WW	YW	SC	MILK	RE	MARB	ACT. BW WEIGHT (AS OF 10/20/22)	BASE PRICE
+3	+2.4	+61	+96	-.20	+36	+51	+66	71	1320
80%	80%	50%	75%	95%	4%	70%	40%	3000	

CED	BW	WW	YW	DMI	YH	SC	DOC	HP	CEM	MILK	MW	MH	CW	MARB	RE	FAT	TEND
84	89	54	76	51	59	88	75	81	78	6	76	75	51	55	71	100	26



Lot 22 - Lesikar Capitalist H625

9

21 LESIKAR CAPITALIST H620

Birth Date: 10-28-2020 Bull *20083539 Tattoo: H620

#*Connealy Capitalist 028	#*S A V Final Answer 0035	\$M	+73	55%
+*LD Capitalist 316	Prides Pita of Conanga 8821	\$W	+48	75%
17666102	LD Dixie Erica 2053	\$F	+86	45%
ANGUSGS	#C A Future Direction 5321	\$G	+47	55%
LD Dixie Erica Oar 0853	#D H D Traveler 6807	\$B	+133	55%
#O C C Anchor 771A	O C C Juanada 709V	\$C	+246	45%
Lesikar Blackcap B605	#BR Midland	\$A:H	+116	35%
18114322	+Lesikar Blackcap U812	\$A:J	+84	50%
	HA Blackcap 1137			

CED	BW	WW	YW	SC	MILK	RE	MARB	ACT. BW WEIGHT (AS OF 10/20/22)	BASE PRICE
+8	+2.3	+51	+88	-.46	+22	+51	+57	83	1310
35%	75%	80%	85%	95%	80%	70%	25%	3000	

CED	BW	WW	YW	DMI	YH	SC	DOC	HP	CEM	MILK	MW	MH	CW	MARB	RE	FAT	TEND
13	46	86	75	8	83	94	67	29	81	72	86	88	75	58	56	65	3

23 LESIKAR CAPITALIST H866

Birth Date: 11-01-2020 Bull 20083606 Tattoo: H866

#*Connealy Capitalist 028	#*S A V Final Answer 0035	\$M	+67	70%
+*LD Capitalist 316	Prides Pita of Conanga 8821	\$W	+62	35%
17666102	LD Dixie Erica 2053	\$F	+101	20%
ANGUSGS	#C A Future Direction 5321	\$G	+39	75%
LD Dixie Erica Oar 0853	#*Twin Valley Precision E161	\$B	+139	50%
#BR Midland	BR Royal Lass 7036-19	\$C	+247	45%
+Lesikar Blackcap U817	#Bon View New Design 208	\$A:H	+44	80%
16342443	HA Blackcap 1137	\$A:J	+29	80%
	+A Plus Blackcap 0140			

CED	BW	WW	YW	SC	MILK	RE	MARB	ACT. BW WEIGHT (AS OF 10/20/22)	BASE PRICE
+6	+1.9	+73	+125	+1.20	+19	+44	+42	71	1375
55%	65%	20%	25%	30%	95%	80%	40%	3000	

CED	BW	WW	YW	DMI	YH	SC	DOC	HP	CEM	MILK	MW	MH	CW	MARB	RE	FAT	TEND
94	63	16	28	35	25	26	86	40	11	77	25	25	35	74	78	82	14



Lot 25 - Lesikar Innovation H599

24 LESIKAR CAPITALIST H867

Birth Date: 11-03-2020 Bull 20083568 Tattoo: H867

*Connealy Capitalist 028		**S A V Final Answer 0035		\$M	+73	85%
*LD Capitalist 316		Prides Pita of Conanga 8821		\$W	+55	55%
17666102	LD Dixie Erica 2053	#C A Future Direction 5321		\$F	+75	70%
ANGUSGS <small>Powered by Neogen GenScan</small>		LD Dixie Erica Oar 0853		\$G	+29	90%
O C C Legend 616L		#+O C C Emblazon 854E		\$B	+103	90%
*Lesikar Lady Belle Y252		O C C Blackbird 632J		\$C	+207	85%
17175111	+MJB Traveler Lady 398 87921	#D H D Traveler 6807		\$A:H	+21	90%
		+HHF Precision Lady 704 398		\$A:J	-16	95%

CED	BW	WW	YW	SC	MILK	RE	MARB	ACT. BW WEIGHT (AS OF 10/20/22)	71
+11	-.2	+50	+81	+1.21	+23	+33	+26	1345	
15%	20%	80%	90%	30%	75%	90%	25%	3000	

CED	BW	WW	YW	DMI	YH	SC	DOC	HP	CEM	MILK	MW	MH	CW	MARB	RE	FAT	TEND
20	31	79	93	5	76	14	84	82	21	74	95	88	78	92	81	81	72

26 LESIKAR INNOVATION H607

Birth Date: 09-21-2020 Bull *20082915 Tattoo: H607

*Connealy Impression		#Connealy Reflection		\$M	+51	70%
*MAR Innovation 251		Pearl Pammy of Conanga 194		\$W	+48	75%
16983331	**MAR Final Kahuna 856	**S A V Final Answer 0035		\$F	+64	90%
ANGUSGS <small>Powered by Neogen GenScan</small>		#MAR Kahuna Precision 328 674		\$G	+42	65%
#+O C C Emblazon 854E		#D H D Traveler 6807		\$B	+106	90%
Lesikar Blackcap D744		Dixie Erica of C H 1019		\$C	+188	95%
18891967	+Lesikar Blackcap Y812	#Jauer 353 Traveler 589 27		\$A:H	+68	70%
		+A Plus Blackcap 0037		\$A:J	+60	60%

CED	BW	WW	YW	SC	MILK	RE	MARB	ACT. BW WEIGHT (AS OF 10/20/22)	62
+4	+2.3	+53	+90	+6.64	+22	+53	+44	1330	
70%	75%	75%	80%	65%	80%	65%	85%	3000	

CED	BW	WW	YW	DMI	YH	SC	DOC	HP	CEM	MILK	MW	MH	CW	MARB	RE	FAT	TEND
75	74	60	59	17	40	79	79	83	65	60	66	67	78	69	57	34	98

25 LESIKAR INNOVATION H599

Birth Date: 09-14-2020 Bull *20083527 Tattoo: H599

*Connealy Impression		#Connealy Reflection		\$M	+21	25%
*MAR Innovation 251		Pearl Pammy of Conanga 194		\$W	+44	85%
16983331	**MAR Final Kahuna 856	**S A V Final Answer 0035		\$F	+94	30%
ANGUSGS <small>Powered by Neogen GenScan</small>		#MAR Kahuna Precision 328 674		\$G	+63	20%
#Lesikar Traveler Z946		#D H D Traveler 6807		\$B	+157	25%
Lesikar Blackcap C658C		+A Plus Blackcap 0037		\$C	+225	70%
18515144	+Lesikar Blackcap Y813	#Jauer 353 Traveler 589 27		\$A:H	+128	30%
		+A Plus Blackcap 0037		\$A:J	+114	30%

CED	BW	WW	YW	SC	MILK	RE	MARB	ACT. BW WEIGHT (AS OF 10/20/22)	70
-1	+3.1	+65	+114	+1.29	+18	+63	+86	1530	
95%	90%	40%	40%	25%	95%	50%	95%	3000	

CED	BW	WW	YW	DMI	YH	SC	DOC	HP	CEM	MILK	MW	MH	CW	MARB	RE	FAT	TEND
94	85	34	19	17	27	32	93	72	77	89	5	13	45	29	40	41	36

27 LESIKAR INNOVATION H828

Birth Date: 09-15-2020 Bull +*20082916 Tattoo: H828

*Connealy Impression		#Connealy Reflection		\$M	+83	65%
*MAR Innovation 251		Pearl Pammy of Conanga 194		\$W	+56	50%
16983331	**MAR Final Kahuna 856	**S A V Final Answer 0035		\$F	+74	75%
ANGUSGS <small>Powered by Neogen GenScan</small>		#MAR Kahuna Precision 328 674		\$G	+44	60%
#+Leachman Right Time		#*N Bar Emulation EXT		\$B	+118	80%
*Coleman Donna 3216		Leachman Erica 0025		\$C	+236	55%
17783513	+*Coleman Donna 714	#*Connealy Onward		\$A:H	+76	65%
		+*Coleman Donna 386		\$A:J	+72	55%

CED	BW	WW	YW	SC	MILK	RE	MARB	ACT. BW WEIGHT (AS OF 10/20/22)	71
+3	+1.0	+57	+95	+1.27	+24	+47	+48	1380	
80%	45%	65%	75%	25%	65%	75%	10%	3000	

CED	BW	WW	YW	DMI	YH	SC	DOC	HP	CEM	MILK	MW	MH	CW	MARB	RE	FAT	TEND
42	17	68	80	21	47	34	12	11	21	64	77	32	84	56	73	38	49



Lot 28 - Lesikar Big Time H574

28 LESIKAR BIG TIME H574

Birth Date: 08-23-2020 Bull 20082941 Tattoo: H574

O C C Rear End 751R #*O C C Homer 650H **\$M +65 95%**
 *O C C Big Time 746Z +FCC Revolution Rose 995N **\$W +50 70%**
 17696450 *O C C Dixie Erica 771R #*O C C Missing Link 830M **\$F +85 50%**
ANGUSGS O C C Dixie Erica 776M **\$G +26 95%**
Powered by Angogen Genesort #O C C Jet Stream 825J #+O C C Emblazon 854E **\$B +111 85%**
Lesikar Blackcap Z953 O C C Juanada 968G **\$C +209 80%**
 17175074 G A R Objective 1765 #*S S Objective T510 OT26 **\$A:H +78 65%**
 +G A R 1407 New Design 2453 **\$A:J +47 70%**

CED	BW	WW	YW	SC	MILK	RE	MARB	ACT. BW WEIGHT (AS OF 10/20/22)	83
+3	+2.6	+53	+89	+7.4	+24	+63	+0.4	1425	
80%	80%	75%	85%	60%	65%	50%	45%	BASE PRICE	3000

CED	BW	WW	YW	DMI	YH	SC	DOC	HP	CEM	MILK	MW	MH	CW	MARB	RE	FAT	TEND
88	93	37	64	16	89	31	53	21	47	80	61	83	26	94	30	24	92

29 LESIKAR TOUR OF DUTY H857

Birth Date: 11-18-2020 Bull 20083451 Tattoo: H857

#**Werner War Party 2417 #**Connealy Onward **\$M +58 65%**
 #**R B Tour Of Duty 177 +BAAR USA Lady Jaye 489 **\$W +60 40%**
 16984170 **B A Lady 6807 305 #Vermilion Dateline 7078 **\$F +69 85%**
ANGUSGS +G D Lady Hi Flyer 302 **\$G +46 55%**
Powered by Angogen Genesort #Connealy Thunder #Baldridge Kaboom K243 KCF **\$B +115 80%**
Lesikar Pride X163 #Parka of Conanga 241 **\$C +207 85%**
 16871861 +LAR Pride P247 #D H D Traveler 6807 **\$A:H +4 90%**
 M A 6127 of 9352 Ext **\$A:J -13 95%**

CED	BW	WW	YW	SC	MILK	RE	MARB	ACT. BW WEIGHT (AS OF 10/20/22)	71
+8	+1.1	+60	+103	+1.08	+30	+43	+4.8	1430	
35%	50%	55%	60%	35%	25%	80%	65%	BASE PRICE	3000

CED	BW	WW	YW	DMI	YH	SC	DOC	HP	CEM	MILK	MW	MH	CW	MARB	RE	FAT	TEND
24	25	47	66	31	12	39	67	22	17	35	29	25	69	66	60	9	73



Lot 29 - Lesikar Tour of Duty H857

30 LESIKAR BISMARCK H824

Birth Date: 08-26-2020 Bull *20082900 Tattoo: H824

#**G A R Grid Maker	#G D A R Traveler 044	\$M	+48	95%
#S A V Bismarck 5682	G A R Precision 2536	\$W	+42	85%
15109865	S A V Abigale 0451	\$F	+61	95%
ANGUSGS	#Schoenes Fix It 826	\$G	+28	95%
Powered by Angus GenSnek	S A V Abigale 6062	\$B	+89	95%
+Lesikar Eureka A188	#*O C C Eureka 865E	\$C	+163	95%
Lesikar Pride E137	+A Plus Blackcap 0037	\$A:H	+4	90%
19183580	+Lesikar Impact W601	\$A:J	-39	95%
	Lesikar Pride Z996			

CED	BW	WW	YW	SC	MILK	RE	MARB	ACT. BW WEIGHT (AS OF 10/20/22)	BASE PRICE
+7	+1.3	+50	+80	+36	+15	+50	+13	71	1300
45%	55%	80%	90%	80%	95%	70%	90%	3000	

CED	BW	WW	YW	DMI	YH	SC	DOC	HP	CEM	MILK	MW	MH	CW	MARB	RE	FAT	TEND
86	85	26	70	34	56	65	89	51	76	98	55	54	60	90	57	30	77

33 LESIKAR PIONEER H568

Birth Date: 08-17-2020 Bull 20082908 Tattoo: H568

#*S A V Final Answer 0035	#Sitz Traveler 8180	\$M	+62	95%
#S A V Pioneer 7301	S A V Emulous 8145	\$W	+64	30%
15688392	#+Boyd New Day 8005	\$F	+76	70%
ANGUSGS	S A V Blackbird 1082	\$G	+32	90%
Powered by Angus GenSnek	#*O C C Paxton 730P	\$B	+108	90%
Lesikar Paxton Y835	+L A R Barbara R360	\$C	+202	85%
Lesikar Annie D700	+*O C C Jupiter 671J	\$A:H	+85	60%
18514341	Garretts E Bar V Annie 3149	\$A:J	+80	50%

CED	BW	WW	YW	SC	MILK	RE	MARB	ACT. BW WEIGHT (AS OF 10/20/22)	BASE PRICE
-1	+3.1	+69	+112	+89	+24	+80	+18	83	1575
95%	90%	95%	45%	50%	65%	25%	55%	3000	

CED	BW	WW	YW	DMI	YH	SC	DOC	HP	CEM	MILK	MW	MH	CW	MARB	RE	FAT	TEND
92	86	20	57	65	82	44	94	38	38	71	61	84	69	87	38	81	89

31 LESIKAR BISMARCK H826

Birth Date: 09-02-2020 Bull *20082901 Tattoo: H826

#**G A R Grid Maker	#G D A R Traveler 044	\$M	+74	80%
#S A V Bismarck 5682	G A R Precision 2536	\$W	+63	35%
15109865	S A V Abigale 0451	\$F	+87	45%
ANGUSGS	#Schoenes Fix It 826	\$G	+33	85%
Powered by Angus GenSnek	S A V Abigale 6062	\$B	+120	75%
+Lesikar Impact W601	#+O C C Emblazon 854E	\$C	+230	65%
Lesikar Queen Idelette B589	+A Plus Blackcap 0037	\$A:H	+88	55%
18110752	#Vermilion Dateline 7078	\$A:J	+51	65%
	Lesikar Queen Idelette W555			

CED	BW	WW	YW	SC	MILK	RE	MARB	ACT. BW WEIGHT (AS OF 10/20/22)	BASE PRICE
+9	+8	+59	+102	+25	+29	+45	+32	71	1295
30%	40%	55%	65%	85%	30%	75%	25%	3000	

CED	BW	WW	YW	DMI	YH	SC	DOC	HP	CEM	MILK	MW	MH	CW	MARB	RE	FAT	TEND
54	59	16	25	13	32	76	31	16	91	25	26	22	20	77	40	71	56



Lot 33 - Lesikar Pioneer H568

32 LESIKAR BISMARCK H839 [M1F]

Birth Date: 08-28-2020 Bull *20082903 Tattoo: H839

#**G A R Grid Maker	#G D A R Traveler 044	\$M	+67	75%
#S A V Bismarck 5682	G A R Precision 2536	\$W	+49	70%
15109865	S A V Abigale 0451	\$F	+51	95%
ANGUSGS	#Schoenes Fix It 826	\$G	+33	85%
Powered by Angus GenSnek	S A V Abigale 6062	\$B	+85	95%
+Lesikar Eureka Z371	#*O C C Eureka 865E	\$C	+177	95%
Lesikar EvereldaEntense F494	+MJB Traveler Lady 398 87921	\$A:H	-64	95%
19183405	+Lesikar Everelda EntenseY260	\$A:J	-80	95%
	#*O C C Missing Link 830M			
	+Kahn Everelda Entense B050			

CED	BW	WW	YW	SC	MILK	RE	MARB	ACT. BW WEIGHT (AS OF 10/20/22)	BASE PRICE
+10	+1.0	+48	+85	+37	+24	+15	+38	71	1160
20%	45%	85%	85%	80%	65%	95%	40%	3000	

CED	BW	WW	YW	DMI	YH	SC	DOC	HP	CEM	MILK	MW	MH	CW	MARB	RE	FAT	TEND
8	22	64	77	38	55	61	93	58	13	69	82	56	78	65	82	46	45



34 LESIKAR PIONEER J726

Birth Date: 08-15-2021 Bull *20235333 Tattoo: J726

#*S A V Final Answer 0035	#Sitz Traveler 8180	\$M	+57	80%
#S A V Pioneer 7301	S A V Emulous 8145	\$W	+55	55%
15688392	S A V Blackbird 5297	\$F	+82	55%
ANGUS <small>Powered by Neogen Genesick</small>	#+Boyd New Day 8005	\$G	+35	80%
Lesikar Barbara E936	S A V Blackbird 1082	\$B	+117	80%
19183468	*O C C Big Time 746Z	\$C	+209	80%
	O C C Rear End 751R	\$A:H	+54	75%
	*O C C Dixie Erica 771R	\$A:J	+22	80%
	#BR Midland			
	+Sedgwicks Barbara 087			

CED	BW	WW	YW	SC	MILK	RE	MARB	ACT. BW WEIGHT (AS OF 10/20/22)	FAT	TEND
+10	-2	+57	+110	+1.78	+25	+44	+36	77		
20%	20%	65%	50%	10%	60%	80%	70%	960		
								BASE PRICE	3000	

CED	BW	WW	YW	DMI	YH	SC	DOC	HP	CEM	MILK	MW	MH	CW	MARB	RE	FAT	TEND
92	24	35	15	78	41	9	51	42	94	40	30	39	40	76	70	77	20

36 LESIKAR RESERVE H564

Birth Date: 08-13-2020 Bull *20083430 Tattoo: H564

**B/R New Day 454	#+Boyd New Day 8005	\$M	+86	90%
##*V A R Reserve 1111	B/R Ruby 1224	\$W	+63	35%
16916944	**Sandpoint Blackbird 8809	\$F	+66	90%
ANGUS <small>Powered by Neogen Genesick</small>	#*Connealy Onward	\$G	+34	85%
Lesikar Blackcap F146	+Riverbend Blackbird 4301	\$B	+101	95%
19183316	+Lesikar Eureka A188	\$C	+217	75%
	+A Plus Blackcap 0037	\$A:H	+87	60%
	*+O C C Jupiter 671J	\$A:J	+63	60%
	Lesikar Blackcap B445			
	Lesikar Blackcap Y892			

CED	BW	WW	YW	SC	MILK	RE	MARB	ACT. BW WEIGHT (AS OF 10/20/22)	FAT	TEND
+10	+8	+62	+99	+1.10	+22	+75	+20	65		
20%	40%	45%	70%	35%	80%	30%	5%	1325		
								BASE PRICE	2500	

CED	BW	WW	YW	DMI	YH	SC	DOC	HP	CEM	MILK	MW	MH	CW	MARB	RE	FAT	TEND
40	53	26	56	69	78	31	32	21	68	84	63	78	52	94	17	34	54

35 LESIKAR RESOURCE H872

Birth Date: 12-27-2020 Bull *20082933 Tattoo: H872

+Rito 707 of Ideal 3407 7075	#R R Rito 707	\$M	+40	95%
##*S A V Resource 1441	Ideal 3407 of 1418 076	\$W	+54	60%
17016597	*S A V Blackcap May 4136	\$F	+98	25%
ANGUS <small>Powered by Neogen Genesick</small>	#S A V 8180 Traveler 004	\$G	+32	90%
Lesikar Blackcap B616	#+S A V May 2397	\$B	+130	60%
18114321	+O C C Broadside 876B	\$C	+209	80%
	#D H D Traveler 6807	\$A:H	-18	95%
	Revolution Rose of R R 9239	\$A:J	-15	95%
	*O C C Paxton 730P			
	Z J H 126P			

CED	BW	WW	YW	SC	MILK	RE	MARB	ACT. BW WEIGHT (AS OF 10/20/22)	FAT	TEND
-2	+4.2	+77	+143	+1.17	+22	+71	+11	71		
95%	95%	15%	10%	30%	80%	35%	95%	1280		
								BASE PRICE	2500	

CED	BW	WW	YW	DMI	YH	SC	DOC	HP	CEM	MILK	MW	MH	CW	MARB	RE	FAT	TEND
91	87	10	9	99	23	27	33	75	87	72	5	27	9	94	15	5	4

37 LESIKAR RESERVE H573

Birth Date: 08-21-2020 Bull 20083443 Tattoo: H573

**B/R New Day 454	#+Boyd New Day 8005	\$M	+50	90%
##*V A R Reserve 1111	B/R Ruby 1224	\$W	+30	95%
16916944	**Sandpoint Blackbird 8809	\$F	+85	50%
ANGUS <small>Powered by Neogen Genesick</small>	#*Connealy Onward	\$G	+35	80%
+Lesikar Erica Y820	+Riverbend Blackbird 4301	\$B	+121	75%
16873679	#Jauer 353 Traveler 589 27	\$C	+207	85%
	Jauer 7111 Traveler 353 719	\$A:H	+62	70%
	Jauer 6807 Traveler 27 085	\$A:J	+24	80%
	#Papa Durabull 9805			
	G A R New Trend 838			

CED	BW	WW	YW	SC	MILK	RE	MARB	ACT. BW WEIGHT (AS OF 10/20/22)	FAT	TEND
+6	+1.5	+35	+71	-0.89	+23	+73	+20	83		
55%	60%	95%	95%	95%	75%	35%	85%	1310		
								BASE PRICE	2500	

CED	BW	WW	YW	DMI	YH	SC	DOC	HP	CEM	MILK	MW	MH	CW	MARB	RE	FAT	TEND
65	67	82	44	17	55	100	61	58	75	66	48	54	36	93	19	15	92



Lot 36 - Lesikar Reserve H564

38 LESIKAR RESERVE H876

Birth Date: 11-20-2020 Bull *20083429 Tattoo: H876

#*B/R New Day 454	#*Boyd New Day 8005	\$M	+40	50%
#**V A R Reserve 1111	B/R Ruby 1224	\$W	+36	95%
16916944	+*Sandpoint Blackbird 8809	\$F	+75	70%
ANGUS <small>Powered by Neogen Genesink</small>	+*Connealy Onward	\$G	+55	35%
Lesikar Princess F505	+Riverbend Blackbird 4301	\$B	+130	60%
19183435	Lesikar Princess Y201	\$C	+209	80%
	EF Rita 8475	\$A:H	+103	45%
	Lesikar Princess W874	\$A:J	+58	65%
	**S S Objective T510 OT26			
	Sedgwicks Princess 8940			

CED	BW	WW	YW	SC	MILK	RE	MARB	ACT. BW WEIGHT (AS OF 10/20/22)	BASE PRICE
+9	+1.1	+45	+93	-.18	+22	+66	+63	79	1230
30%	50%	90%	75%	95%	80%	45%	95%	2500	

CED	BW	WW	YW	DMI	YH	SC	DOC	HP	CEM	MILK	MW	MH	CW	MARB	RE	FAT	TEND
49	60	75	23	45	85	94	87	58	68	85	37	78	74	58	29	12	87

40 LESIKAR CONSENSUS H553

Birth Date: 08-08-2020 Bull *20082911 Tattoo: H553

#*Connealy Consensus	#KMK Alliance 6595 187	\$M	+82	80%
#*Connealy Consensus 7229	Blinda of Conanga 004	\$W	+70	15%
16447771	Blue Lilly of Conanga 16	\$F	+97	25%
ANGUS <small>Powered by Neogen Genesink</small>	#Woodhill Admiral 77K	\$G	+37	80%
+Lesikar Blackcap D756	Blue Cash of Conanga 6020	\$B	+134	55%
18899549	**K C F Bennett Absolute	\$C	+256	35%
	Thomas Miss Lucy 5152	\$A:H	+117	35%
	G A R Objective 1765	\$A:J	+123	25%
	**S S Objective T510 OT26			
	+G A R 1407 New Design 2453			

CED	BW	WW	YW	SC	MILK	RE	MARB	ACT. BW WEIGHT (AS OF 10/20/22)	BASE PRICE
+9	-.2	+66	+115	+.29	+27	+70	+33	61	1450
30%	20%	35%	35%	40%	45%	40%	10%	2500	

CED	BW	WW	YW	DMI	YH	SC	DOC	HP	CEM	MILK	MW	MH	CW	MARB	RE	FAT	TEND
61	37	36	52	42	37	84	32	14	61	66	66	44	39	91	39	82	33

39 LESIKAR ABSOLUTE H602

Birth Date: 09-18-2020 Bull *20083455 Tattoo: H602

#*S A V Final Answer 0035	#Sitz Traveler 8180	\$M	+58	45%
#*K C F Bennett Absolute	S A V Emulous 8145	\$W	+52	65%
16430795	Thomas Miss Lucy 5152	\$F	+75	70%
ANGUS <small>Powered by Neogen Genesink</small>	+*Wulffs Ext 6106	\$G	+49	50%
*Lesikar Burgess D678	Thomas Miss Lucy 3050	\$B	+124	70%
18514319	+Lesikar Surefire X126	\$C	+219	75%
	+*O C C Emblazon 854E	\$A:H	+74	65%
	+Sedgwicks Barbara 087	\$A:J	+65	60%
	+Lesikar Impact W601			
	+LAR Burgess S503			

CED	BW	WW	YW	SC	MILK	RE	MARB	ACT. BW WEIGHT (AS OF 10/20/22)	BASE PRICE
+3	+2.0	+51	+86	+.71	+26	+54	+64	65	1220
80%	70%	80%	85%	60%	50%	65%	65%	2500	

CED	BW	WW	YW	DMI	YH	SC	DOC	HP	CEM	MILK	MW	MH	CW	MARB	RE	FAT	TEND
88	87	66	64	32	20	43	57	83	71	99	75	55	54	48	37	64	57

41 LESIKAR CONSENSUS H605

Birth Date: 09-20-2020 Bull *20083402 Tattoo: H605

#*Connealy Consensus	#KMK Alliance 6595 187	\$M	+60	40%
#*Connealy Consensus 7229	Blinda of Conanga 004	\$W	+55	55%
16447771	Blue Lilly of Conanga 16	\$F	+43	95%
ANGUS <small>Powered by Neogen Genesink</small>	#Woodhill Admiral 77K	\$G	+53	40%
+Lesikar Blackcap C577	Blue Cash of Conanga 6020	\$B	+97	95%
18514149	+*O C C Emblazon 854E	\$C	+186	95%
	#D H D Traveler 6807	\$A:H	+34	85%
	Dixie Erica of C H 1019	\$A:J	+5	85%
	**S S Objective T510 OT26			
	+G A R 1407 New Design 2453			

CED	BW	WW	YW	SC	MILK	RE	MARB	ACT. BW WEIGHT (AS OF 10/20/22)	BASE PRICE
+8	-.1	+42	+68	+.94	+34	+45	+72	70	1380
35%	25%	95%	95%	45%	10%	75%	60%	2500	

CED	BW	WW	YW	DMI	YH	SC	DOC	HP	CEM	MILK	MW	MH	CW	MARB	RE	FAT	TEND
54	50	91	96	12	36	30	26	61	100	20	93	63	94	40	45	40	77

14



Lot 41 - Lesikar Consensus H605



Lot 42 - Lesikar Consensus H618

42 LESIKAR CONSENSUS H618

Birth Date: 10-21-2020 Bull +20083408 Tattoo: H618

#*Connealy Consensus 16447771	#KMK Alliance 6595 I87 Blinda of Conanga 004 #Woodhill Admiral 77K Blue Cash of Conanga 6020	\$M +80 45% \$W +61 40% \$F +60 95% \$G +53 40% \$B +113 85% \$C +227 65% \$A:H +35 85% \$A:J -11 90%
#D H D Traveler 6807 #*Connealy Consensus 7229 Blue Lilly of Conanga 16	#Q A S Traveler 23-4 #Bemindful Maid D H D 0807 +G A R Precision 1680 +G A R Ext 704	
+*MJB Traveler Lady 398 87921 16346694	+HHF Precision Lady 704 398	

CED	BW	WW	YW	SC	MILK	RE	MARB	ACT. BW WEIGHT (AS OF 10/20/22)	95
+8	+2.2	+55	+90	+90	+30	+47	+64	1465	
35%	75%	70%	80%	50%	25%	75%	15%	BASE PRICE	2500

CED	BW	WW	YW	DMI	YH	SC	DOC	HP	CEM	MILK	MW	MH	CW	MARB	RE	FAT	TEND
60	90	50	73	61	85	27	56	69	48	40	78	75	71	48	50	6	95

43 LESIKAR JET BLACK J895

Birth Date: 02-14-2021 Bull +*20083706 Tattoo: J895

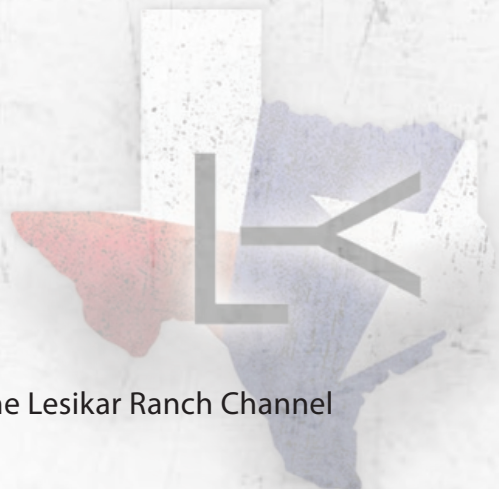
*Bar R Jet Black 5063 18389838	#*Connealy Black Granite Bar R Iris Anita 0113	\$M +54 30% \$W +76 10% \$F +115 5% \$G +61 25% \$B +177 10% \$C +284 15% \$A:H +171 10% \$A:J +160 10%
#*V A R Discovery 2240 +*Gabriel Total Discovery 548 18388222	#*Connealy Consensus 7229 #Eura Elga of Conanga 9109 #*Sitz Upward 307R Bar R Anita 7081 **A A R Ten X 7008 S A +*Deer Valley Rita 0308 #TC Total 410 +DZ New Design 1407-4007	

CED	BW	WW	YW	SC	MILK	RE	MARB	ACT. BW WEIGHT (AS OF 10/20/22)	79
+7	+7	+82	+155	+1.34	+29	+71	+81	1330	
45%	40%	5%	2%	25%	30%	35%	75%	BASE PRICE	2500

CED	BW	WW	YW	DMI	YH	SC	DOC	HP	CEM	MILK	MW	MH	CW	MARB	RE	FAT	TEND
44	41	14	2	93	55	17	7	93	73	47	8	20	11	25	31	49	55



To watch lot videos, subscribe to our YouTube channel: The Lesikar Ranch Channel





Lot 44 - Lesikar Jet Black J917

16

44 LESIKAR JET BLACK J917

Birth Date: 02-23-2021 Bull +*20083703 Tattoo: J917

#*Connealy Black Granite	#*Connealy Consensus 7229	\$M	+70	45%
*Bar R Jet Black 5063	#Eura Elga of Conanga 9109	\$W	+75	10%
18389838 Bar R Iris Anita 0113	#*Sitz Upward 307R	\$F	+115	5%
ANGUSGS #*V A R Discovery 2240	Bar R Anita 7081	\$G	+50	45%
Powered by <i>Angus Genetics</i>	#*A A R Ten X 7008 S A	\$B	+165	15%
+*Gabriel Total Discovery 548	+*Deer Valley Rita 0308	\$C	+284	15%
18388222 +*DZ Total 8T05	#TC Total 410	\$A:H	+105	45%
	+DZ New Design 1407-4007	\$A:J	+100	40%

CED	BW	WW	YW	SC	MILK	RE	MARB	ACT. BW WEIGHT (AS OF 10/20/22)	79
+10	+7	+83	+152	+1.18	+26	+52	+64	1340	
20%	40%	5%	3%	30%	50%	65%	35%	BASE PRICE	2500

CED	BW	WW	YW	DMI	YH	SC	DOC	HP	CEM	MILK	MW	MH	CW	MARB	RE	FAT	TEND
39	41	7	4	98	29	22	9	12	9	76	8	20	6	43	54	53	70

45 LESIKAR JET BLACK J912

Birth Date: 02-25-2021 Bull +*20083704 Tattoo: J912

#*Connealy Black Granite	#*Connealy Consensus 7229	\$M	+77	15%
*Bar R Jet Black 5063	#Eura Elga of Conanga 9109	\$W	+85	2%
18389838 Bar R Iris Anita 0113	#*Sitz Upward 307R	\$F	+109	10%
ANGUSGS #*V A R Discovery 2240	Bar R Anita 7081	\$G	+66	20%
Powered by <i>Angus Genetics</i>	#*A A R Ten X 7008 S A	\$B	+175	10%
+*Gabriel Total Discovery 548	+*Deer Valley Rita 0308	\$C	+304	4%
18388222 +*DZ Total 8T05	#TC Total 410	\$A:H	+138	20%
	+DZ New Design 1407-4007	\$A:J	+123	25%

CED	BW	WW	YW	SC	MILK	RE	MARB	ACT. BW WEIGHT (AS OF 10/20/22)	79
+7	+2.2	+91	+153	+1.21	+27	+57	+99	1410	
45%	75%	1%	3%	30%	45%	60%	15%	BASE PRICE	2500

CED	BW	WW	YW	DMI	YH	SC	DOC	HP	CEM	MILK	MW	MH	CW	MARB	RE	FAT	TEND
56	79	2	8	93	23	17	3	52	37	58	12	16	3	15	46	81	85



46 LESIKAR JET BLACK J913

Birth Date: 03-01-2021 Bull +*20083705 Tattoo: J913

#*Connealy Black Granite	#*Connealy Consensus 7229	\$M	+50	40%
*Bar R Jet Black 5063	#Eura Elga of Conanga 9109	\$W	+68	20%
18389838	#*Sitz Upward 307R	\$F	+117	4%
	Bar R Anita 7081	\$G	+50	45%
ANGUS <small>Powered by Neogen Genesick</small>	#*A A R Ten X 7008 S A	\$B	+168	15%
#*V A R Discovery 2240	+*Deer Valley Rita 0308	\$C	+268	25%
+*Gabriel Total Discovery 548	#TC Total 410	\$A:H	+88	55%
18388222	+*DZ Total 8T05	\$A:J	+74	55%
	+DZ New Design 1407-4007			

CED	BW	WW	YW	SC	MILK	RE	MARB	ACT. BW WEIGHT (AS OF 10/20/22)	79
+4	+3.5	+87	+154	+1.36	+22	+4.0	+7.0	1300	
70%	95%	3%	3%	20%	80%	80%	85%	2500	

CED	BW	WW	YW	DMI	YH	SC	DOC	HP	CEM	MILK	MW	MH	CW	MARB	RE	FAT	TEND
60	82	10	5	96	51	22	44	86	38	75	5	32	5	31	84	86	75

48 LESIKAR INNOVATION J897

Birth Date: 02-17-2021 Bull *20082922 Tattoo: J897

#*Connealy Impression	#Connealy Reflection	\$M	+51	80%
#*MAR Innovation 251	Pearl Pammy of Conanga 194	\$W	+50	70%
16983331	#*S A V Final Answer 0035	\$F	+84	50%
	#MAR Kahuna Precision 328 674	\$G	+43	65%
ANGUS <small>Powered by Neogen Genesick</small>	#+O C C Rancher 680R	\$B	+127	65%
Lesikar Burgess D789	O C C Juanada 775C	\$C	+216	75%
18895571	#BR Midland	\$A:H	+92	55%
	+Lesikar Burgess U818	\$A:J	+80	50%
	+Twin Eagles Burgess 750L			

CED	BW	WW	YW	SC	MILK	RE	MARB	ACT. BW WEIGHT (AS OF 10/20/22)	79
+1	+1.7	+54	+102	+3.9	+28	+6.7	+3.4	1310	
90%	65%	70%	65%	80%	35%	40%	85%	2500	

CED	BW	WW	YW	DMI	YH	SC	DOC	HP	CEM	MILK	MW	MH	CW	MARB	RE	FAT	TEND
84	52	77	34	9	62	84	65	46	44	39	34	55	68	85	32	3	41

47 LESIKAR JET BLACK J672

Birth Date: 03-02-2021 Bull 20083713 Tattoo: J672

#*Connealy Black Granite	#*Connealy Consensus 7229	\$M	+49	65%
*Bar R Jet Black 5063	#Eura Elga of Conanga 9109	\$W	+49	70%
18389838	#*Sitz Upward 307R	\$F	+100	20%
	Bar R Anita 7081	\$G	+43	65%
	#Q A S Traveler 23-4	\$B	+143	45%
	#Bemindful Maid D H D 0807	\$C	+234	60%
Lesikar Blackcap Y877	#*N Bar Emulation EXT	\$A:H	+96	50%
17169585	+A Plus Blackcap 0037	\$A:J	+72	55%
	#G A R Scotch Cap 867			

CED	BW	WW	YW	SC	MILK	RE	MARB	ACT. BW WEIGHT (AS OF 10/20/22)	89
+4	+4.6	+71	+126	+1.71	+22	+4.9	+5.0	1405	
70%	95%	25%	25%	60%	80%	70%	85%	2500	

CED	BW	WW	YW	DMI	YH	SC	DOC	HP	CEM	MILK	MW	MH	CW	MARB	RE	FAT	TEND
60	82	10	5	96	51	22	44	86	38	75	5	32	5	31	84	86	75

49 LESIKAR TAHOE J889

Birth Date: 01-01-2021 Bull 20082956 Tattoo: J889

*Tehama Upward Y238	#*Sitz Upward 307R	\$M	+54	35%
#**Tehama Tahoe B767	+Tehama Elite Blackbird T735	\$W	+68	20%
17817177	Tehama Mary Blackbird Y684	\$F	+67	90%
	#*S A V Final Answer 0035	\$G	+59	30%
ANGUS <small>Powered by Neogen Genesick</small>	Tehama Mary Blackbird T073	\$B	+126	65%
Lesikar Dixie Erica Z326	+O C C Focus 813F	\$C	+217	75%
17574058	O C C Blackbird 736K	\$A:H	+128	30%
	#BR Midland	\$A:J	+105	35%
	Twin Eagles Dixie Erica 9H			

CED	BW	WW	YW	SC	MILK	RE	MARB	ACT. BW WEIGHT (AS OF 10/20/22)	77
+9	+2	+62	+103	+2.22	+28	+7.5	+7.3	1430	
30%	30%	45%	60%	90%	35%	30%	75%	2500	

CED	BW	WW	YW	DMI	YH	SC	DOC	HP	CEM	MILK	MW	MH	CW	MARB	RE	FAT	TEND
32	45	60	73	50	97	73	91	53	94	63	65	93	72	35	16	44	56



Lot 49 - Lesikar Tahoe J889



Lot 53 - Lesikar Tahoe J671

50 LESIKAR TAHOE J892

Birth Date: 01-23-2021 Bull *20082958 Tattoo: J892

	*Tehama Upward Y238	**Sitz Upward 307R	\$M	+91	45%
#**Tehama Tahoe B767	+Tehama Elite Blackbird T735		\$W	+80	4%
17817177	+*Tehama Mary Blackbird Y684	**S A V Final Answer 0035	\$F	+72	80%
ANGUSGS		Tehama Mary Blackbird T073	\$G	+53	40%
Powered by Neogen Genesink	+Lesikar Legacy W607	#+O C C Emblazon 854E	\$B	+125	70%
Lesikar Dixie Erica C636	+A Plus Blackcap 0037		\$C	+253	40%
18110807	+Lesikar Dixie Erica X970	#BR Midland	\$A:H	+106	45%
		Twin Eagles Dixie Erica 9H	\$A:J	+79	50%

CED	BW	WW	YW	SC	MILK	RE	MARB	ACT. BW WEIGHT (AS OF 10/20/22)	77
+6	+1.5	+73	+124	+1.25	+29	+5.6	+6.7	1310	
55%	60%	20%	25%	30%	60%	2%		2500	

CED	BW	WW	YW	DMI	YH	SC	DOC	HP	CEM	MILK	MW	MH	CW	MARB	RE	FAT	TEND
56	72	24	29	56	55	15	6	11	99	51	80	87	56	33	63	72	58

52 LESIKAR TAHOE J663

Birth Date: 02-16-2021 Bull *20082976 Tattoo: J663

	*Tehama Upward Y238	**Sitz Upward 307R	\$M	+77	55%
#**Tehama Tahoe B767	+Tehama Elite Blackbird T735		\$W	+68	20%
17817177	+*Tehama Mary Blackbird Y684	**S A V Final Answer 0035	\$F	+74	75%
ANGUSGS		Tehama Mary Blackbird T073	\$G	+45	60%
Powered by Neogen Genesink	+Lesikar Surefire X126	#+O C C Emblazon 854E	\$B	+119	75%
Lesikar Juana F322	+Sedgwicks Barbara 087		\$C	+231	60%
19402237	Lesikar Juana X675	#+S A V Mandan 5664	\$A:H	+72	65%
		LAR Juana R290	\$A:J	+27	80%

CED	BW	WW	YW	SC	MILK	RE	MARB	ACT. BW WEIGHT (AS OF 10/20/22)	60
+5	+2.1	+58	+94	+1.04	+32	+4.8	+5.5	1150	
65%	70%	60%	75%	40%	15%	70%	15%	2500	

CED	BW	WW	YW	DMI	YH	SC	DOC	HP	CEM	MILK	MW	MH	CW	MARB	RE	FAT	TEND
86	92	39	70	33	67	22	89	64	56	26	86	85	38	57	62	81	47

51 LESIKAR TAHOE J657

Birth Date: 02-15-2021 Bull *20082963 Tattoo: J657

	*Tehama Upward Y238	**Sitz Upward 307R	\$M	+68	70%
#**Tehama Tahoe B767	+Tehama Elite Blackbird T735		\$W	+77	10%
17817177	+*Tehama Mary Blackbird Y684	**S A V Final Answer 0035	\$F	+77	65%
ANGUSGS		Tehama Mary Blackbird T073	\$G	+46	55%
Powered by Neogen Genesink	#*O C C Paxton 730P	+O C C Focus 813F	\$B	+123	70%
Lesikar Blackcap A245	O C C Blackbird 736K		\$C	+228	65%
17820957	+Lesikar Blackcap Y817	#Jauer 353 Traveler 589 27	\$A:H	+120	35%
		+A Plus Blackcap 0037	\$A:J	+94	40%

CED	BW	WW	YW	SC	MILK	RE	MARB	ACT. BW WEIGHT (AS OF 10/20/22)	71
+6	+1.6	+81	+138	+0.87	+24	+6.3	+4.6	1210	
55%	60%	10%	10%	50%	65%	50%	40%	2500	

CED	BW	WW	YW	DMI	YH	SC	DOC	HP	CEM	MILK	MW	MH	CW	MARB	RE	FAT	TEND
83	89	21	18	93	95	33	85	26	77	88	55	96	60	77	47	34	98

53 LESIKAR TAHOE J671

Birth Date: 03-02-2021 Bull *20082973 Tattoo: J671

	*Tehama Upward Y238	**Sitz Upward 307R	\$M	+97	50%
#**Tehama Tahoe B767	+Tehama Elite Blackbird T735		\$W	+78	5%
17817177	+*Tehama Mary Blackbird Y684	**S A V Final Answer 0035	\$F	+57	95%
ANGUSGS		Tehama Mary Blackbird T073	\$G	+55	35%
Powered by Neogen Genesink	#*Connealy Consensus 7229	#*Connealy Consensus	\$B	+112	85%
Lesikar Blackcap E982	Blue Lilly of Conanga 16		\$C	+242	50%
19183521	Lesikar Blackcap A330	#*O C C Paxton 730P	\$A:H	+98	50%
		+Lesikar Blackcap Y905	\$A:J	+67	60%

CED	BW	WW	YW	SC	MILK	RE	MARB	ACT. BW WEIGHT (AS OF 10/20/22)	77
+9	+5	+70	+117	+0.80	+28	+5.1	+6.3	1320	
30%	35%	25%	35%	55%	35%	70%	1%	2500	

CED	BW	WW	YW	DMI	YH	SC	DOC	HP	CEM	MILK	MW	MH	CW	MARB	RE	FAT	TEND
33	41	40	44	49	84	44	27	6	87	61	91	96	88	48	51	7	33

54 LESIKAR TAHOE J675 [DDC]

Birth Date: 03-03-2021 Bull 20082974 Tattoo: J675

*Tehama Upward Y238	**Sitz Upward 307R	\$M	+53	65%
#**Tehama Tahoe B767	+Tehama Elite Blackbird T735	\$W	+77	10%
17817177	+*Tehama Mary Blackbird Y684	\$F	+82	55%
ANGUSGS	**S A V Final Answer 0035	\$G	+50	45%
Powered by <small>Angus Genetics</small>	Tehama Mary Blackbird T073	\$B	+132	60%
Lesikar Pride F202	#+O C C Emblazon 854E	\$C	+224	70%
19183380	+A Plus Blackcap 0037	\$A:H	+103	45%
	#B/R New Design 036	\$A:J	+103	35%
	M A 6127 of 9352 Ext			

CED	BW	WW	YW	SC	MILK	RE	MARB	ACT. BW WEIGHT (AS OF 10/20/22)	BASE PRICE
+8	+9	+69	+120	+1.23	+38	+75	+50	60	1385
35%	45%	30%	30%	30%	2%	30%	80%		2500

CED	BW	WW	YW	DMI	YH	SC	DOC	HP	CEM	MILK	MW	MH	CW	MARB	RE	FAT	TEND
80	88	34	28	63	37	15	67	72	80	18	51	57	36	73	21	15	27

56 LESIKAR RESERVE J911

Birth Date: 02-13-2021 Bull *20083424 Tattoo: J911

#*B/R New Day 454	**Boyd New Day 8005	\$M	+85	40%
#**V A R Reserve 1111	B/R Ruby 1224	\$W	+55	55%
16916944	+*Sandpoint Blackbird 8809	\$F	+71	80%
ANGUSGS	**Riverbend Blackbird 4301	\$G	+62	25%
Powered by <small>Angus Genetics</small>	+Rito 707 of Ideal 3407 7075	\$B	+133	55%
*Lesikar Donna F527	*S A V Blackcap May 4136	\$C	+258	35%
19425084	+*Coleman Donna 3216	\$A:H	+114	40%
	#Leachman Right Time	\$A:J	+96	40%
	+*Coleman Donna 714			

CED	BW	WW	YW	SC	MILK	RE	MARB	ACT. BW WEIGHT (AS OF 10/20/22)	BASE PRICE
+11	+5	+55	+99	+3.8	+25	+84	+71	78	1160
15%	35%	70%	70%	80%	60%	20%	5%		2500

CED	BW	WW	YW	DMI	YH	SC	DOC	HP	CEM	MILK	MW	MH	CW	MARB	RE	FAT	TEND
4	9	66	59	78	45	69	53	2	59	51	63	39	54	34	13	7	45

55 LESIKAR TAHOE J684

Birth Date: 03-17-2021 Bull 20082978 Tattoo: J684

*Tehama Upward Y238	**Sitz Upward 307R	\$M	+74	90%
#**Tehama Tahoe B767	+Tehama Elite Blackbird T735	\$W	+65	30%
17817177	+*Tehama Mary Blackbird Y684	\$F	+56	95%
ANGUSGS	**S A V Final Answer 0035	\$G	+29	90%
Powered by <small>Angus Genetics</small>	Tehama Mary Blackbird T073	\$B	+85	95%
+Lesikar Primrose Z318	#+O C C Eureka 865E	\$C	+184	95%
17289355	#Blackbird of R R 1204	\$A:H	+45	80%
	**Twin Valley Precision E161	\$A:J	+9	85%
	+B A A R Roth Primrose 096 CV			

CED	BW	WW	YW	SC	MILK	RE	MARB	ACT. BW WEIGHT (AS OF 10/20/22)	BASE PRICE
+11	-.9	+56	+92	+1.32	+28	+46	+21	65	1260
15%	15%	65%	80%	25%	35%	75%	25%		2500

CED	BW	WW	YW	DMI	YH	SC	DOC	HP	CEM	MILK	MW	MH	CW	MARB	RE	FAT	TEND
44	59	38	62	40	66	19	61	13	98	53	75	77	70	93	64	73	71

57 LESIKAR POWERBALL J922

Birth Date: 04-10-2021 Bull *20083693 Tattoo: J922

#*PA Power Tool 9108	**G A R Predestined	\$M	+55	50%
#*Raven Powerball 53	*Shamrocks Beebee Queen 3095	\$W	+58	45%
17632447	+*Raven Emma E 4241	\$F	+79	65%
ANGUSGS	**Hoover Dam	\$G	+45	60%
Powered by <small>Angus Genetics</small>	PCAR Emma E 2215	\$B	+124	70%
Lesikar Juana A479	#Rito 616 of 4B20 6807	\$C	+216	75%
17822874	G A R Precision 2536	\$A:H	+17	90%
	+LAR Designer N127	\$A:J	-13	95%
	Twin Eagles Juana 184J			

CED	BW	WW	YW	SC	MILK	RE	MARB	ACT. BW WEIGHT (AS OF 10/20/22)	BASE PRICE
+0	+2.4	+61	+101	+1.16	+24	+26	+60	77	1280
95%	80%	50%	65%	35%	65%	95%	75%		2500

CED	BW	WW	YW	DMI	YH	SC	DOC	HP	CEM	MILK	MW	MH	CW	MARB	RE	FAT	TEND
84	57	37	80	18	50	16	72	83	90	41	76	55	49	52	91	79	38



Lot 57 - Lesikar Powerball J922



Lot 59 - Lesikar Big Time J650

58 LESIKAR CONSENSUS J914

Birth Date: 03-10-2021 Bull #*20083406 Tattoo: J914

#*Connealy Consensus	#KMK Alliance 6595 I87	\$M	+80	80%
#*Connealy Consensus 7229	Blinda of Conanga 004	\$W	+61	40%
16447771 Blue Lilly of Conanga 16	#Woodhill Admiral 77K	\$F	+76	70%
ANGUSGS #*O C C Emblazon 854E	Blue Cash of Conanga 6020	\$G	+39	75%
16663816 +Lesikar Barbara X930	#D H D Traveler 6807	\$B	+115	80%
+Sedgwicks Barbara 087	Dixie Erica of C H 1019	\$C	+229	65%
	#*O C C Backstop 888B	\$A:H	+93	55%
	Sedgwicks Barbara 4171	\$A:J	+61	60%

CED	BW	WW	YW	SC	MILK	RE	MARB	ACT. BW WEIGHT (AS OF 10/20/22)	75
+12	+4	+57	+93	+49	+23	+46	+34	1420	
10%	35%	65%	75%	75%	75%	15%		2500	

CED	BW	WW	YW	DMI	YH	SC	DOC	HP	CEM	MILK	MW	MH	CW	MARB	RE	FAT	TEND
19	42	34	77	12	63	60	16	51	91	74	88	81	54	80	48	15	23

60 LESIKAR BIG TIME J664

Birth Date: 02-20-2021 Bull #*20082995 Tattoo: J664

*O C C Big Time 746Z	O C C Rear End 751R	\$M	+46	95%
Lesikar Big Time E400	*O C C Dixie Erica 771R	\$W	+41	90%
19183564 Lesikar Blackbird X134	O C C Legend 616L	\$F	+85	50%
ANGUSGS #O C C Anchor 771A	+LAR Blackbird P235	\$G	+33	85%
Lesikar Barbara B584	#D H D Traveler 6807	\$B	+119	75%
18114320 +Lesikar Barbara W855	O C C Juanada 709V	\$C	+200	90%
	#B/R Destination 727-928	\$A:H	+82	60%
	+Sedgwicks Barbara 087	\$A:J	+63	60%

CED	BW	WW	YW	SC	MILK	RE	MARB	ACT. BW WEIGHT (AS OF 10/20/22)	71
+3	+2.9	+54	+99	-26	+21	+76	+15	1310	
80%	85%	70%	70%	95%	85%	30%	90%	2500	

CED	BW	WW	YW	DMI	YH	SC	DOC	HP	CEM	MILK	MW	MH	CW	MARB	RE	FAT	TEND
73	76	61	43	62	78	88	76	25	76	77	29	58	41	93	14	26	11

59 LESIKAR BIG TIME J650

Birth Date: 01-30-2021 Bull 20082989 Tattoo: J650

*O C C Big Time 746Z	O C C Rear End 751R	\$M	+66	60%
Lesikar Big Time E400	*O C C Dixie Erica 771R	\$W	+53	60%
19183564 Lesikar Blackbird X134	O C C Legend 616L	\$F	+46	95%
ANGUSGS #*B C Lookout 7024	+LAR Blackbird P235	\$G	+43	65%
+Lesikar Blackcap Y878	O C C Legend 616L	\$B	+89	95%
17169586 +A Plus Blackcap 0037	Gibbet Hill Mignonne E37	\$C	+181	95%
	#*N Bar Emulation EXT	\$A:H	+69	70%
	#G A R Scotch Cap 867	\$A:J	+41	70%

CED	BW	WW	YW	SC	MILK	RE	MARB	ACT. BW WEIGHT (AS OF 10/20/22)	65
+11	-.6	+46	+76	+51	+25	+39	+52	1220	
15%	15%	90%	95%	75%	60%	85%	45%	2500	

CED	BW	WW	YW	DMI	YH	SC	DOC	HP	CEM	MILK	MW	MH	CW	MARB	RE	FAT	TEND
20	26	79	84	29	97	52	97	59	60	68	94	98	93	46	71	54	14

61 LESIKAR CONSENSUS J909

Birth Date: 02-07-2021 Bull #*20082985 Tattoo: J909

#*Connealy Consensus 7229	#*Connealy Consensus	\$M	+55	90%
Lesikar Consensus E112	Blue Lilly of Conanga 16	\$W	+43	85%
19183549 +Lesikar Blackcap Z169	#*O C C Emblazon 854E	\$F	+69	85%
ANGUSGS +Lesikar Emblazon W604	+A Plus Blackcap 0037	\$G	+26	95%
Lesikar Juana F181	#*O C C Emblazon 854E	\$B	+95	95%
19183356 LAR Juana R290	+A Plus Blackcap 0037	\$C	+178	95%
	L A R Bando 1002	\$A:H	-85	95%
	LAR Juana L22	\$A:J	-73	95%

CED	BW	WW	YW	SC	MILK	RE	MARB	ACT. BW WEIGHT (AS OF 10/20/22)	79
+5	+2.8	+59	+101	-.09	+15	+08	+25	1210	
65%	85%	55%	65%	95%	95%	95%	75%	2500	

CED	BW	WW	YW	DMI	YH	SC	DOC	HP	CEM	MILK	MW	MH	CW	MARB	RE	FAT	TEND
63	74	36	51	66	47	83	53	74	50	97	53	71	62	74	99	75	37

62 LESIKAR CONSENSUS J910

Birth Date: 02-13-2021 Bull *20082983 Tattoo: J910

Lesikar Consensus E112		Blue Lilly of Conanga 16		\$M	+61	90%
19183549	+Lesikar Blackcap Z169	#+O C C Emblazon 854E		\$W	+53	60%
ANGUSGS <small>Powered by Hogen GenSeek</small>		#A Plus Blackcap 0037		\$F	+79	65%
Lesikar Evergreen F514		O C C Rear End 751R		\$G	+32	90%
19408232	Lesikar Evergreen X920	*O C C Big Time 746Z		\$B	+111	85%
		*O C C Dixie Erica 771R		\$C	+205	85%
		#*Mytty In Focus		\$A:H	+104	45%
		#+TF Evergreen 7445		\$A:J	+82	50%

CED	BW	WW	YW	SC	MILK	RE	MARB	ACT. BW WEIGHT (AS OF 10/20/22)	FAT	TEND
+6	+3.0	+69	+117	+1.35	+16	+55	+23	1140		
55%	85%	30%	35%	20%	95%	60%	60%	2500		

CED	BW	WW	YW	DMI	YH	SC	DOC	HP	CEM	MILK	MW	MH	CW	MARB	RE	FAT	TEND
52	82	10	26	50	89	15	37	22	93	96	22	63	38	83	46	46	5

65 LESIKAR JET BLACK J949 [DDC]

Birth Date: 08-16-2021 Bull 20231929 Tattoo: J949

*Bar R Jet Black 5063		#Eura Elga of Conanga 9109		\$M	+54	40%
18389838	Bar R Iris Anita 0113	#*Sitz Upward 307R		\$W	+53	60%
		Bar R Anita 7081		\$F	+106	15%
		#Sitz Traveler 8180		\$G	+53	40%
		S A V Emulous 8145		\$B	+160	20%
Lesikar Dixie Erica F547		+Lesikar Surefire X126		\$C	+262	30%
19402204	Lesikar Dixie Erica D834	Lesikar Dixie Erica T679		\$A:H	+151	15%
				\$A:J	+149	15%

CED	BW	WW	YW	SC	MILK	RE	MARB	ACT. BW WEIGHT (AS OF 10/20/22)	FAT	TEND
+7	+3.1	+69	+122	+1.21	+22	+66	+68	830		
45%	90%	30%	30%	30%	80%	45%	75%	2500		

CED	BW	WW	YW	DMI	YH	SC	DOC	HP	CEM	MILK	MW	MH	CW	MARB	RE	FAT	TEND
52	82	10	26	50	89	15	37	22	93	96	22	63	38	83	46	46	5

63 LESIKAR CONSENSUS J925

Birth Date: 02-21-2021 Bull 20083714 Tattoo: J925

Lesikar Consensus E112		Blue Lilly of Conanga 16		\$M	+66	60%
19183549	+Lesikar Blackcap Z169	#+O C C Emblazon 854E		\$W	+54	60%
ANGUSGS <small>Powered by Hogen GenSeek</small>		#A Plus Blackcap 0037		\$F	+60	95%
Lesikar Evergreen Z369		*O C C Emblazon 854E		\$G	+48	50%
17573606	Lesikar Evergreen W558	+A Plus Blackcap 0037		\$B	+107	90%
		#+Dr J Analyst M250		\$C	+205	85%
		+LAR Evergreen L31		\$A:H	+38	85%
				\$A:J	+1	90%

CED	BW	WW	YW	SC	MILK	RE	MARB	ACT. BW WEIGHT (AS OF 10/20/22)	FAT	TEND
+6	+1.4	+53	+93	+4.0	+26	+55	+52	1100		
55%	55%	75%	75%	80%	50%	60%	45%	2500		

CED	BW	WW	YW	DMI	YH	SC	DOC	HP	CEM	MILK	MW	MH	CW	MARB	RE	FAT	TEND
74	75	37	39	57	50	64	81	31	83	63	62	64	70	61	43	19	5

66 LESIKAR PEYTON J727

Birth Date: 08-16-2021 Bull 20227638 Tattoo: J727

*E W A Peyton 642		#*Quaker Hill Blackcap 0A32		\$M	+61	55%
18675107	#*E W A 444 of 968 Progress	#*G A R Progress		\$W	+69	20%
ANGUSGS <small>Powered by Hogen GenSeek</small>		+Edgewood Lady 968		\$F	+113	10%
Lesikar Blackcap Y812		Jauer 7111 Traveler 353 719		\$G	+56	35%
16873716	+A Plus Blackcap 0037	Jauer 6807 Traveler 27 085		\$B	+168	15%
		#*N Bar Emulation EXT		\$C	+279	15%
		#G A R Scotch Cap 867		\$A:H	+150	15%
				\$A:J	+138	20%

CED	BW	WW	YW	SC	MILK	RE	MARB	ACT. BW WEIGHT (AS OF 10/20/22)	FAT	TEND
+11	+1.0	+68	+130	+7.5	+33	+99	+59	1100		
15%	45%	30%	20%	60%	10%	10%	60%	2500		

CED	BW	WW	YW	DMI	YH	SC	DOC	HP	CEM	MILK	MW	MH	CW	MARB	RE	FAT	TEND
12	33	33	6	78	50	44	78	10	47	20	28	43	11	50	10	36	87

64 LESIKAR EMBLAZON J648

Birth Date: 01-20-2021 Bull 20082894 Tattoo: J648

+Lesikar Emblazon W604		Dixie Erica of CH 1019		\$M	+29	95%
16663831	+A Plus Blackcap 0037	#*N Bar Emulation EXT		\$W	+31	95%
ANGUSGS <small>Powered by Hogen GenSeek</small>		#G A R Scotch Cap 867		\$F	+53	95%
Lesikar Primrose Z337		#+O C C Emblazon 854E		\$G	+17	95%
17573573	+Lesikar Primrose X968	+A Plus Blackcap 0037		\$B	+70	95%
		#D H D Traveler 6807		\$C	+120	95%
		+LaGrand Primrose 8244		\$A:H	+15	90%
				\$A:J	-13	95%

CED	BW	WW	YW	SC	MILK	RE	MARB	ACT. BW WEIGHT (AS OF 10/20/22)	FAT	TEND
+9	+1.4	+50	+84	+1.12	+10	+48	-.07	1200		
30%	55%	80%	90%	90%	95%	70%	95%	2500		

CED	BW	WW	YW	DMI	YH	SC	DOC	HP	CEM	MILK	MW	MH	CW	MARB	RE	FAT	TEND
43	75	57	68	51	73	76	82	72	90	100	42	58	87	98	53	51	75



Lot 66 - Lesikar Peyton J727



Lot 67 - Lesikar Perseverance J718

67 LESIKAR PERSEVERANCE J718

Birth Date: 08-12-2021 Bull *20227724 Tattoo: J718

#**Basin Payweight 1682	#**Basin Payweight 006S	\$M	+66	95%
+*Deer Valley Growth Fund	21AR O Lass 7017	\$W	+80	4%
18827828	+*Deer Valley Rita 36113	\$F	+100	20%
ANGUSGS	#**Plattemere Weigh Up K360	\$G	+25	95%
Powered by Neogen GenScan	+Deer Valley Rita 9457	\$B	+125	70%
#*O C C Paxton 730P	+O C C Focus 813F	\$C	+228	65%
Lesikar Blackcap C500	O C C Blackbird 736K	\$A:H	+104	45%
18114384	#*O C C Missing Link 830M	\$A:J	+97	40%
	G A R Objective 1765			

CED	BW	WW	YW	SC	MILK	RE	MARB	ACT. BW WEIGHT (AS OF 10/20/22)	89
+6	+3.3	+96	+163	+1.61	+21	+70	+0	1000	
55%	90%	1%	1%	15%	85%	40%	45%	2500	

CED	BW	WW	YW	DMI	YH	SC	DOC	HP	CEM	MILK	MW	MH	CW	MARB	RE	FAT	TEND
27	69	2	20	97	46	10	57	15	21	91	21	64	15	93	26	27	18

69 LESIKAR GROWTH FUND J960

Birth Date: 09-06-2021 Bull *20227709 Tattoo: J960

#**Basin Payweight 1682	#**Basin Payweight 006S	\$M	+71	65%
+*Deer Valley Growth Fund	21AR O Lass 7017	\$W	+77	10%
18827828	+*Deer Valley Rita 36113	\$F	+99	20%
ANGUSGS	#**Plattemere Weigh Up K360	\$G	+39	75%
Powered by Neogen GenScan	+Deer Valley Rita 9457	\$B	+138	50%
#*O C C Emblazon 854E	+Sedgwicks Barbara 087	\$C	+250	40%
Lesikar Queenie D272	#B/R Destination 727-928	\$A:H	+103	45%
18891956	+Lesikar Queenie W494	\$A:J	+96	40%
	+Premium Gold Queenie 302R			

CED	BW	WW	YW	SC	MILK	RE	MARB	ACT. BW WEIGHT (AS OF 10/20/22)	83
+6	+2.0	+72	+126	+0.85	+38	+46	+50	815	
55%	70%	20%	25%	55%	2%	75%	30%	2500	

CED	BW	WW	YW	DMI	YH	SC	DOC	HP	CEM	MILK	MW	MH	CW	MARB	RE	FAT	TEND
33	38	50	39	66	59	55	31	24	7	7	37	26	46	41	79	95	85

68 LESIKAR GROWTH FUND J953

Birth Date: 08-30-2021 Bull *20227690 Tattoo: J953

#**Basin Payweight 1682	#**Basin Payweight 006S	\$M	+55	95%
+*Deer Valley Growth Fund	21AR O Lass 7017	\$W	+72	15%
18827828	+*Deer Valley Rita 36113	\$F	+95	30%
ANGUSGS	#**Plattemere Weigh Up K360	\$G	+14	95%
Powered by Neogen GenScan	+Deer Valley Rita 9457	\$B	+109	85%
#S A V Pioneer 7301	#*S A V Final Answer 0035	\$C	+196	90%
*Lesikar Princess F539	S A V Blackbird 5297	\$A:H	+43	80%
19402201	Lesikar Princess D788	\$A:J	+19	80%
	+Lesikar Princess U732			

CED	BW	WW	YW	SC	MILK	RE	MARB	ACT. BW WEIGHT (AS OF 10/20/22)	77
+6	+9	+68	+123	+0.42	+34	+21	+07	880	
55%	45%	30%	25%	80%	10%	95%	75%	2500	

CED	BW	WW	YW	DMI	YH	SC	DOC	HP	CEM	MILK	MW	MH	CW	MARB	RE	FAT	TEND
29	18	44	50	67	72	81	90	54	11	16	34	53	53	87	98	100	33



70 LESIKAR GROWTH FUND J748

Birth Date: 09-09-2021 Bull *20227687 Tattoo: J748

#**Basin Payweight 1682	#**Basin Payweight 006S	\$M	+68	60%
+*Deer Valley Growth Fund	21AR O Lass 7017	\$W	+78	5%
18827828	**Deer Valley Rita 36113	\$F	+91	35%
ANGUS <small>Powered by Herdgen Genetics</small>	**Plattemere Weigh Up K360	\$G	+45	60%
Lesikar Blackcap F301	+Deer Valley Rita 9457	\$B	+137	50%
19403170	#*Connealy Consensus 7229	\$C	+246	45%
	Blue Lilly of Conanga 16	\$A.H	+138	20%
	+Lesikar Blackcap Z169	\$A.J	+140	15%
	#+O C C Emblazon 854E			
	+A Plus Blackcap 0037			

CED	BW	WW	YW	SC	MILK	RE	MARB	ACT. BW WEIGHT (AS OF 10/20/22)	59
+11	+8	+86	+151	+92	+23	+71	+53	1000	
15%	40%	3%	3%	50%	75%	35%	40%	BASE PRICE	2500

CED	BW	WW	YW	DMI	YH	SC	DOC	HP	CEM	MILK	MW	MH	CW	MARB	RE	FAT	TEND
44	76	3	6	88	44	36	2	19	65	85	8	23	28	50	33	83	31

71 LESIKAR GROWTH FUND J970

Birth Date: 09-18-2021 Bull +*20227699 Tattoo: J970

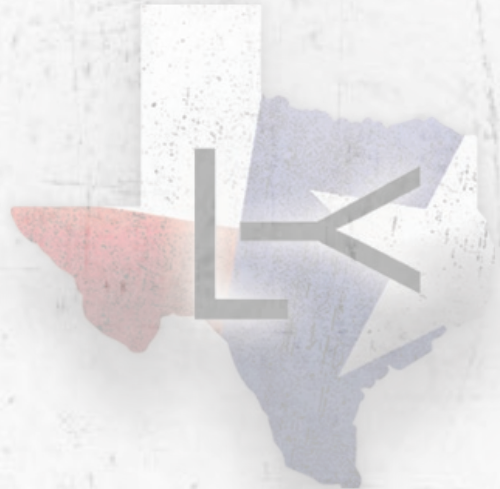
#**Basin Payweight 1682	#**Basin Payweight 006S	\$M	+79	85%
+*Deer Valley Growth Fund	21AR O Lass 7017	\$W	+83	2%
18827828	**Deer Valley Rita 36113	\$F	+101	20%
ANGUS <small>Powered by Herdgen Genetics</small>	**Plattemere Weigh Up K360	\$G	+31	90%
+*McKellar Britta May 8052	+Deer Valley Rita 9457	\$B	+131	60%
19155249	#*S A V Renown 3439	\$C	+249	45%
	+Rito 707 of Ideal 3407 7075	\$A.H	+117	35%
	*S A V Blackcap May 4136	\$A.J	+118	30%
	#*Connealy Consensus			
	#+Britt of Conanga 1251 877N			

CED	BW	WW	YW	SC	MILK	RE	MARB	ACT. BW WEIGHT (AS OF 10/20/22)	77
+4	+1.3	+83	+145	+58	+32	+60	+27	800	
70%	55%	5%	5%	70%	15%	55%	15%	BASE PRICE	2500

CED	BW	WW	YW	DMI	YH	SC	DOC	HP	CEM	MILK	MW	MH	CW	MARB	RE	FAT	TEND
25	25	30	29	59	78	62	24	33	21	34	31	57	47	71	71	95	29



Lot 70 - Lesikar Growth Fund J748





Lot 72 - Lesikar Perseverance J736

72 LESIKAR PERSEVERANCE J736

Birth Date: 08-20-2021 Bull *20231965 Tattoo: J736

#*Plattemere Weigh Up K360 #*Sitz Upward 307R
Mead Perseverance R1266 #Barbara of Plattemere 337
 19162202 #Mead Miss Marathon L835 #Connealy Answer 71
ANGUS GS #Mead Miss Marathon J630
Powered by Waggon Genetics +O C C Broadside 876B #D H D Traveler 6807
Lesikar Blackcap B401 Revolution Rose of R R R 9239
 18114331 +Lesikar Blackcap Z979 #O C C Anchor 771A
 +A Plus Blackcap 0037

\$M +83 60%
\$W +59 45%
\$F +68 85%
\$G +45 60%
\$B +113 85%
\$C +230 65%
\$A:H +81 60%
\$A:J +39 75%

CED	BW	WW	YW	SC	MILK	RE	MARB	ACT. BW WEIGHT (AS OF 10/20/22)	95
+6	+1.9	+53	+101	+1.17	+32	+46	+54	950	
55%	65%	75%	65%	90%	15%	75%	10%	BASE PRICE	2500

CED	BW	WW	YW	DMI	YH	SC	DOC	HP	CEM	MILK	MW	MH	CW	MARB	RE	FAT	TEND
33	36	73	60	48	98	83	88	25	77	21	92	91	83	37	73	77	57

74 LESIKAR PERSEVERANCE J766

Birth Date: 10-07-2021 Bull 20231943 Tattoo: J766

#*Plattemere Weigh Up K360 #*Sitz Upward 307R
Mead Perseverance R1266 #Barbara of Plattemere 337
 19162202 #Mead Miss Marathon L835 #Connealy Answer 71
 #Mead Miss Marathon J630
 #*MAR Innovation 251 #*Connealy Impression
Lesikar Blackcap F304 #*MAR Final Kahuna 856
 19402225 Lesikar Blackcap Y807 #Connealy Thunder
 R B Blackcap 738

\$M +79 20%
\$W +71 15%
\$F +101 20%
\$G +69 15%
\$B +169 15%
\$C +298 10%
\$A:H +165 10%
\$A:J +142 15%

CED	BW	WW	YW	SC	MILK	RE	MARB	ACT. BW WEIGHT (AS OF 10/20/22)	65
+6	+4	+72	+123	+1.79	+29	+1.81	+93	900	
55%	35%	20%	25%	55%	30%	25%	15%	BASE PRICE	2500

CED	BW	WW	YW	DMI	YH	SC	DOC	HP	CEM	MILK	MW	MH	CW	MARB	RE	FAT	TEND
33	36	73	60	48	98	83	88	25	77	21	92	91	83	37	73	77	57

24

73 LESIKAR PERSEVERANCE J963

Birth Date: 09-08-2021 Bull *20231947 Tattoo: J963

#*Plattemere Weigh Up K360 #*Sitz Upward 307R
Mead Perseverance R1266 #Barbara of Plattemere 337
 19162202 #Mead Miss Marathon L835 #Connealy Answer 71
ANGUS GS #Mead Miss Marathon J630
Powered by Waggon Genetics +Lesikar Rebound X931 #+O C C Emblazon 854E
***Lesikar Lass E382** +Sedgwicks Barbara 087
 19183474 Lesikar Lass B603 +Lesikar Legacy W607
 Lesikar Lass W909

\$M +69 45%
\$W +61 40%
\$F +79 65%
\$G +45 60%
\$B +124 70%
\$C +230 65%
\$A:H -46 95%
\$A:J -45 95%

CED	BW	WW	YW	SC	MILK	RE	MARB	ACT. BW WEIGHT (AS OF 10/20/22)	83
+4	+4	+57	+99	+1.15	+28	+24	+64	780	
70%	35%	65%	70%	35%	95%	35%		BASE PRICE	2500

CED	BW	WW	YW	DMI	YH	SC	DOC	HP	CEM	MILK	MW	MH	CW	MARB	RE	FAT	TEND
39	15	38	56	62	69	24	77	43	75	37	46	47	30	31	83	88	80



Lot 74 - Lesikar Perseverance J766

75 LESIKAR POWERBALL J942

Birth Date: 08-10-2021 Bull *20231942 Tattoo: J942

#*PA Power Tool 9108	#*G A R Predestined	\$M	+78	80%
#*Raven Powerball 53	*Shamrocks Beebee Queen 3095	\$W	+50	70%
17632447	**Hoover Dam	\$F	+69	85%
ANGUSGS	PCAR Emma E 2215	\$G	+41	70%
Powered by <i>Angus Genetics</i>	**+O C C Eureka 865E	\$B	+110	85%
Lesikar Barbara G651	+MJB Traveler Lady 398 87921	\$C	+221	70%
19512685	+Lesikar Legacy W607	\$A:H	+79	65%
	+Lesikar Barbara Z278	\$A:J	+42	70%

CED	BW	WW	YW	SC	MILK	RE	MARB	ACT. BW WEIGHT (AS OF 10/20/22)	BASE PRICE
+11	+0	+53	+89	+1.29	+18	+61	+36	85	2500
15%	25%	75%	85%	25%	95%	50%	15%		

CED	BW	WW	YW	DMI	YH	SC	DOC	HP	CEM	MILK	MW	MH	CW	MARB	RE	FAT	TEND
31	23	72	79	65	94	12	38	8	100	83	85	94	71	78	39	22	74

78 LESIKAR EMERALD J944

Birth Date: 08-12-2021 Bull *20231981 Tattoo: J944

#*Connealy Confidence Plus	#*Connealy Confidence 0100	\$M	+70	45%
*Connealy Emerald	Elbanna of Conanga 1209	\$W	+59	45%
19257149	*Connealy Armory	\$F	+87	45%
ANGUSGS	+Jazzy of Conanga 4660 860C	\$G	+58	30%
Powered by <i>Angus Genetics</i>	#Sitz Traveler 8180	\$B	+145	40%
*Lesikar Blackcap F511	S A V Emulous 8145	\$C	+258	35%
19402187	+O C C Broadside 876B	\$A:H	+136	25%
	Lesikar Blackcap B616	\$A:J	+127	25%
	Lesikar Blackcap Z333			

CED	BW	WW	YW	SC	MILK	RE	MARB	ACT. BW WEIGHT (AS OF 10/20/22)	BASE PRICE
+8	+0	+62	+113	+35	+22	+92	+66	71	800
35%	25%	45%	45%	85%	80%	15%	35%		2500

CED	BW	WW	YW	DMI	YH	SC	DOC	HP	CEM	MILK	MW	MH	CW	MARB	RE	FAT	TEND
36	23	63	49	27	66	79	50	57	58	86	87	83	74	39	8	38	10

76 LESIKAR POWERBALL J950

Birth Date: 08-16-2021 Bull *20231956 Tattoo: J950

#*PA Power Tool 9108	#*G A R Predestined	\$M	+69	20%
#*Raven Powerball 53	*Shamrocks Beebee Queen 3095	\$W	+46	80%
17632447	**Hoover Dam	\$F	+64	90%
ANGUSGS	PCAR Emma E 2215	\$G	+63	20%
Powered by <i>Angus Genetics</i>	**O C C Paxton 730P	\$B	+127	65%
Lesikar Barbara F501	+Lesikar Barbara X933	\$C	+234	60%
19183428	+Lesikar Barbara W831	\$A:H	+34	85%
	#*G A R Predestined	\$A:J	-10	90%
	+Sedgwicks Barbara 087			

CED	BW	WW	YW	SC	MILK	RE	MARB	ACT. BW WEIGHT (AS OF 10/20/22)	BASE PRICE
+9	+1.2	+53	+98	+1.35	+19	+36	+93	89	820
30%	50%	75%	70%	20%	95%	85%	35%		2500

CED	BW	WW	YW	DMI	YH	SC	DOC	HP	CEM	MILK	MW	MH	CW	MARB	RE	FAT	TEND
71	69	72	56	74	82	15	33	18	100	75	85	93	82	18	79	45	54

79 LESIKAR EMERALD J964

Birth Date: 09-09-2021 Bull *20231990 Tattoo: J964

#*Connealy Confidence Plus	#*Connealy Confidence 0100	\$M	+64	50%
*Connealy Emerald	Elbanna of Conanga 1209	\$W	+50	70%
19257149	*Connealy Armory	\$F	+73	75%
ANGUSGS	+Jazzy of Conanga 4660 860C	\$G	+54	40%
Powered by <i>Angus Genetics</i>	#+O C C Emblazon 854E	\$B	+127	65%
Lesikar Barbara D261	+A Plus Blackcap 0037	\$C	+229	65%
18891951	+Lesikar Barbara Z278	\$A:H	+114	40%
	#Jauer 353 Traveler 589 27	\$A:J	+95	40%
	+Sedgwicks Barbara 087			

CED	BW	WW	YW	SC	MILK	RE	MARB	ACT. BW WEIGHT (AS OF 10/20/22)	BASE PRICE
+4	+5	+49	+89	+43	+23	+78	+61	83	760
70%	35%	85%	85%	80%	75%	25%	50%		2500

CED	BW	WW	YW	DMI	YH	SC	DOC	HP	CEM	MILK	MW	MH	CW	MARB	RE	FAT	TEND
73	41	88	88	5	97	73	82	69	23	84	99	97	93	49	19	30	48

77 LESIKAR CONSENSUS J737

Birth Date: 08-30-2021 Bull *20297783 Tattoo: J737

#*Connealy Consensus	#KMK Alliance 6595 I87	\$M	+83	45%
#*Connealy Consensus 7229	Blinda of Conanga 004	\$W	+73	15%
16447771	#Woodhill Admiral 77K	\$F	+76	70%
ANGUSGS	Blue Cash of Conanga 6020	\$G	+50	45%
Powered by <i>Angus Genetics</i>	#+O C C Emblazon 854E	\$B	+126	65%
Lesikar Pride E967	+A Plus Blackcap 0037	\$C	+246	45%
19183503	#O C C Jet Stream 825J	\$A:H	+25	85%
	LAR Pride P270	\$A:J	-3	90%

CED	BW	WW	YW	SC	MILK	RE	MARB	ACT. BW WEIGHT (AS OF 10/20/22)	BASE PRICE
+4	+2.8	+67	+107	+61	+31	+49	+65	83	950
70%	85%	35%	55%	70%	20%	70%	10%		2500

CED	BW	WW	YW	DMI	YH	SC	DOC	HP	CEM	MILK	MW	MH	CW	MARB	RE	FAT	TEND
93	92	18	59	52	49	49	51	61	67	45	90	72	32	35	62	59	87



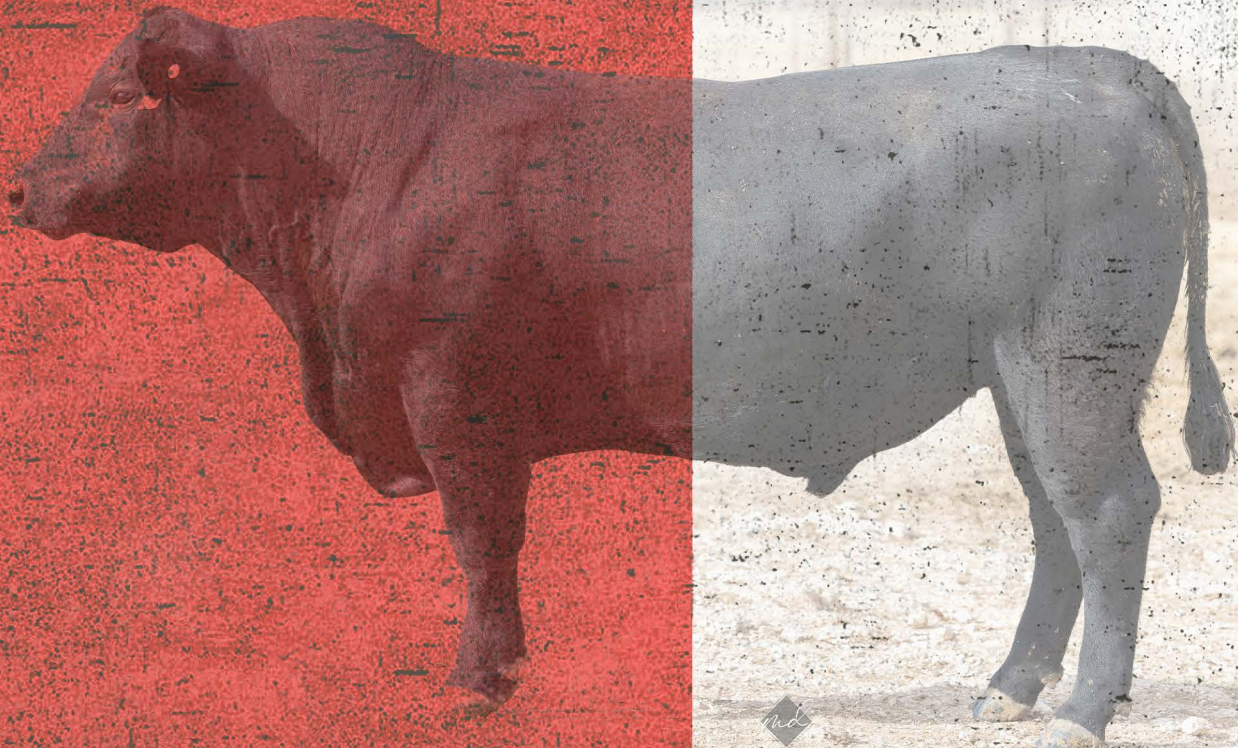


Lesikar Ranch
PO Box 121788
Fort Worth, Texas 76121

PSRT
FIRST CLASS
U.S. POSTAGE
PAID
St. Joseph, MO
Permit #2017

LESIKAR RANCH

BIG BUTTS 7TH ANNUAL HERD BULL SALE



**SATURDAY NOVEMBER 12, 2022 • 1:00 PM
ATHENS, TX**