

LESIKAR RANCH



— 8TH ANNUAL —
BIG BUTTS

ANGUS HERD BULL & FEMALE SALE

WEDNESDAY, NOVEMBER 15, 2023
1PM | ATHENS, TEXAS

Lesikar Ranch

A TEXAS TRADITION SINCE 1960



Harriet & Lyn Lesikar



Katie, Jason, Luke & Savannah Lesikar



Katelin & Scarlett Parrish



**Maria & Martin Lopez
Athens Manager**



**Ana & Jacinto Nunez
Poolville Herd Manager**



**Matthew Bagwell
Poolville Herdsman**

Dear Angus Friends and Fellow Cattlemen,

We would like to take this opportunity to welcome you back to Lesikar Ranch. We invite you to attend the 8th "Big Butts" Bull and Fall Female Sale being held at our Athens Ranch on Wednesday, November 15, 2023. The cattle will be available for viewing by appointment before the sale and all day on Tuesday, November 14. We will begin by serving a fried catfish lunch at noon, followed by our sale starting at 1:00 pm. If you cannot make the sale in person, please join us online with CCI.Live to view and purchase any bulls and females.

As we enter the start of a new 2023 breeding season, what better time to procure a new bull or upgrade your old one? The bulls we are offering are ready to be turned out and start breeding immediately. They are range ready and can handle any soil condition.

Looking through the catalog, you will notice that we have been concentrating on cattle that have great Maternal traits and growth. The Sires we use bring great value to the Angus breed and the cattle we raise and are offering to you. Having great pride in our program allows us the confidence to stand behind and guarantee all of our cattle.

Our genetics are moderate framed, cost efficient, great maternal traits and growth. The efficiency of these cattle requires less feed to keep them in shape and for maintenance. Especially during a time when a lot of area has not seen the normal rains. These cattle have not only survived but are producing and paying their way during these difficult weather times.

We would like to express our sincere gratitude to Martin Lopez, Athens Manager and Jacinto Nunez, Poolville Herd Manager and Matthew Bagwell, Poolville Herdsman. Our entire breeding program, along with this sale, would not be possible without all of their hard work and dedication.

Lesikar Ranch is a family ranch with family values. Please bring your family and join ours for a full day of fun!

We look forward to seeing you!

Jason Lesikar

8th ANNUAL ANGUS HERD BULL & FEMALE SALE

WEDNESDAY, NOVEMBER 15, 2023 | 1:00 PM

at the ranch near Athens, Texas



AUCTIONEER:

Jerry Lehmann
573-999-4759

SALE MANAGER:

American Angus Hall of Fame816-532-0811
Tom Burke816-853-2697
Kurt Schaff816-520-6447
Alex Popplewell270-566-8822

*Buyers unable to attend the sale may send their bids to the
sale manager, regional manager, field representatives or auctioneer.*

SALE DAY PHONES:

Jason Lesikar817-726-7998
Sale Barn Office 903-675-SALE (7253)

LIVESTOCK PRESS:

Radale Tiner, *Angus Journal* 979-492-2663
Phil Stoll, *Weekly Livestock Reporter* 817-366-7332
Greg Goodrum, *Weekly Livestock Reporter* 903-388-2544
Kenny Dolsen, *Southern Livestock Standard*254-485-8454

SALE LOCATION:

Lesikar Ranch
12121 CR 3903, Athens, TX 75752 (See map on page IBC.)

VIDEO: All cattle have been recorded and the video is available for viewing on the Lesikar Ranch You Tube Page.



Online Bidding: View the Sale from your phone, tablet or desktop computer and bid with confidence! Visit www.CCI.Live for complete Sale Information and online registration.

ACCOMMODATIONS:

Holiday Inn903-675-2500
Best Western903-292-1750
Please call to reserve rooms early.

AIR TRAVEL: Lesikar Ranch is 1.5 hours from Dallas/Fort Worth International Airport.

FOOD AND REFRESHMENTS:

Join us at noon on Wednesday for lunch.

TERMS & CONDITIONS: All cattle are to be settled for on sale day, prior to load out, unless prior arrangements have been made. Terms of the sale are cash or check. The cattle sell under the Terms and Conditions of the American Angus Association. Supplements to the sale book and announcements made from the block take precedence over what is written in the sale book.

TRUCKING: Cattle may be loaded following the sale or may remain at the ranch until trucking can be arranged. If you are unable to haul the cattle yourself, please contact Jason Lesikar for help in getting Trucking arranged. Lesikar Ranch makes no guarantees regarding the cost of shipping. Those arrangements are between buyer and hauler.

HERD HEALTH: All cattle will be accompanied by proper health certificates for immediate shipment. All Bulls are 100% virgin bulls and have had a fertility, Trich and soundness exam within 30 days of the Sale. Any bull needing to go outside the state requiring health papers for transport, will be held at our ranch and have paperwork updated post sale.

INSPECTION OF SALE CATTLE: Cattle will be available for viewing any time on Tuesday, November 14th at the ranch near Athens, Texas. If you would like to view the cattle prior to the 14th, please contact Jason Lesikar, 817-726-7998.

DNA TESTING: All the cattle have been tested through ANGUS GS for DNA results.

PREGNANCY EXAMINATION INFORMATION:

All females as listed A.I. bred in the sale book were not exposed to a bull. Pregnancy verification was performed using BioPRYN Testing.

LIABILITY: All persons attending the sale and related functions do so at their own risk. Lesikar Ranch, staff and sale staff assume no liability, legal or otherwise, for any accidents or injuries that may occur.



SALE BOOK PREPARED BY:

Tom Burke, Kurt Schaff, Alex Popplewell
American Angus Hall of Fame,
at the World Angus Headquarters
PO Box 660, Smithville, MO 64089-0660

Phone: (816) 532-0811 | Fax: (816) 532-0851

E-Mail: angushall@angushall.com | Website: www.angushall.com

ANGUS MEDIA EPDs contained in the hard copy of this sale book were current as of print date. Digital versions of this sale book can be viewed online at www.angus.org and will have EPDs updated every Friday with the exception of EPD references in footnotes and photos. Any PDF downloads from the website will contain EPDs current as of the date downloaded. References: American Angus Association®, AHIR®, AngusLinkSM, CAB®, Pathfinder®.

Lesikar Reference Sires

A DEER VALLEY GROWTH FUND

Birth Date: 01-22-2017 Bull **18827828 Tattoo: 71122

#**Basin Payweight 006S #*Plattemere Weigh Up K360

SIRE: #Basin Payweight 1682** **DAM: **Deer Valley Rita 36113**
 17038724 21AR O Lass 7017 17785214 +Deer Valley Rita 9457

CED	BW	WW	YW	SC	MILK	RE	MARB
+8	+1.4	+89	+165	+79	+31	+74	+44
40%	55%	3%	1%	55%	20%	30%	65%
\$M	\$W	\$F	\$G	\$B	\$C	\$A.H	\$A.J
+69	+92	+125	+40	+166	+284	+152	+138
30%	1%	3%	60%	20%	15%	15%	20%



B CONNEALY EMERALD

Birth Date: 01-06-2018 Bull *19257149 Tattoo: 848X

#*Connealy Confidence 0100 #*Connealy Armory

SIRE: #*Connealy Confidence Plus **DAM: Jace of Conanga 6571**
 17585576 Elbanna of Conanga 1209 18637888 +Jazzy of Conanga 4660 860C

CED	BW	WW	YW	SC	MILK	RE	MARB
+6	-.1	+62	+123	+68	+20	+1.11	+92
55%	25%	50%	30%	60%	85%	3%	20%
\$M	\$W	\$F	\$G	\$B	\$C	\$A.H	\$A.J
+70	+58	+89	+76	+165	+284	+177	+160
25%	55%	45%	10%	20%	15%	10%	10%



C MEAD PERSEVERANCE R1266

Birth Date: 08-31-2017 Bull 19162202 Tattoo: R1266

#*Sitz Upward 307R #Connealy Answer 71

SIRE: #*Plattemere Weigh Up K360 **DAM: #Mead Miss Marathon L835**
 16692552 #Barbara of Plattemere 337 17547751 #Mead Miss Marathon J630

CED	BW	WW	YW	SC	MILK	RE	MARB
+7	+1.1	+86	+145	+37	+27	+65	+99
45%	50%	4%	10%	80%	45%	40%	15%
\$M	\$W	\$F	\$G	\$B	\$C	\$A.H	\$A.J
+76	+81	+100	+71	+170	+296	+130	+88
15%	4%	25%	15%	15%	10%	25%	40%



D E W A PEYTON 642

Birth Date: 09-07-2016 Bull *18675107 Tattoo: 642

#*EXAR Denver 2002B #**G A R Progress

SIRE: **Quaker Hill Manning 4EX9 **DAM: #**E W A 444 of 968 Progress**
 17831034 +*Quaker Hill Blackcap 0A32 18076783 +Edgewood Lady 968

CED	BW	WW	YW	SC	MILK	RE	MARB
+10	+2.0	+95	+165	+43	+29	+81	+1.25
25%	70%	1%	1%	80%	35%	20%	5%
\$M	\$W	\$F	\$G	\$B	\$C	\$A.H	\$A.J
+62	+90	+136	+83	+220	+347	+175	+172
45%	1%	1%	5%	1%	1%	10%	10%



E TEHAMA TAHOE B767

Birth Date: 09-06-2013 Bull #**17817177 Tattoo: B767

#*Sitz Upward 307R #*S A V Final Answer 0035

SIRE: *Tehama Upward Y238 **DAM: **Tehama Mary Blackbird Y684**
 16760354 +Tehama Elite Blackbird T735 16876258 Tehama Mary Blackbird T073

CED	BW	WW	YW	SC	MILK	RE	MARB
+9	+1	+80	+135	+1.24	+29	+74	+91
30%	25%	10%	15%	25%	35%	30%	20%
\$M	\$W	\$F	\$G	\$B	\$C	\$A.H	\$A.J
+75	+93	+86	+67	+153	+273	+164	+141
15%	1%	50%	20%	30%	20%	10%	20%



Lesikar Reference Sires

F G A R HOME TOWN

Birth Date: 09-06-2018 Bull *19266718 Tattoo: 7488

#G A R Early Bird #**G A R Sure Fire

SIRE: ****G A R Ashland** **DAM:** ****Chair Rock Sure Fire 6095**
 18217198 *Chair Rock Ambush 1018 18644754 *Chair Rock Progress 3005

CED	BW	WW	YW	SC	MILK	RE	MARB
+15	-.8	+59	+113	+96	+18	+1.04	+1.64
3%	15%	60%	50%	45%	95%	5%	1%
\$M	\$W	\$F	\$G	\$B	\$C	\$A.H	\$A.J
+56	+50	+101	+113	+214	+334	+240	+217
65%	75%	25%	1%	1%	2%	1%	1%



G G A R DUAL THREAT

Birth Date: 09-03-2017 Bull **19123898 Tattoo: 507G

#Connealy In Sure 8524 #MCC Daybreak

SIRE: ****G A R Sure Fire** **DAM:** ****G A R Daybreak A3010**
 17328461 +Chair Rock 5050 G A R 8086 17584199 *G A R 5050 New Design A91

CED	BW	WW	YW	SC	MILK	RE	MARB
+12	-1.1	+63	+121	+1.36	+37	+1.19	+1.15
10%	10%	50%	35%	20%	4%	2%	10%
\$M	\$W	\$F	\$G	\$B	\$C	\$A.H	\$A.J
+65	+68	+121	+84	+205	+331	+210	+211
40%	25%	4%	5%	2%	2%	2%	2%



H BAR R JET BLACK 5063

Birth Date: 07-30-2015 Bull *18389838 Tattoo: 5063

#Connealy Consensus 7229 #Sitz Upward 307R

SIRE: ****Connealy Black Granite** **DAM:** **Bar R Iris Anita 0113**
 17028963 #Eura Elga of Conanga 9109 16858609 Bar R Anita 7081

CED	BW	WW	YW	SC	MILK	RE	MARB
+13	+1.4	+79	+142	+1.30	+24	+77	+68
10%	55%	15%	10%	25%	65%	25%	40%
\$M	\$W	\$F	\$G	\$B	\$C	\$A.H	\$A.J
+52	+75	+121	+55	+176	+280	+180	+185
70%	15%	4%	35%	15%	20%	5%	4%



I CONNEALY COMMERCE

Birth Date: 11-11-2020 Bull *20132642 Tattoo: 023R

#**G A R Sunrise *Connealy Cade

SIRE: ****G A R Sunbeam** **DAM:** ***Avira of Conanga 814R**
 18636166 *G A R Ingenuity 3132 19515454 *Avie of Conanga 624P

CED	BW	WW	YW	SC	MILK	RE	MARB
+16	+1.1	+94	+158	+1.05	+31	+1.05	+92
2%	50%	1%	3%	35%	20%	5%	20%
\$M	\$W	\$F	\$G	\$B	\$C	\$A.H	\$A.J
+78	+92	+109	+72	+181	+313	+193	+196
15%	1%	15%	15%	10%	4%	3%	3%



J E & B WILDCAT 9402

Birth Date: 10-01-2019 Bull *19810163 Tattoo: 9402

#*V A R Discovery 2240 #*Connealy Confidence Plus

SIRE: ****GAR Discovery 6737H** **DAM:** **E&B Lady Plus 643**
 18749135 *G A R Ingenuity 3132 18645816 #E&B Lady Credence 190

CED	BW	WW	YW	SC	MILK	RE	MARB
+14	+3	+83	+148	+0.4	+25	+94	+1.43
4%	30%	10%	10%	95%	60%	10%	2%
\$M	\$W	\$F	\$G	\$B	\$C	\$A.H	\$A.J
+72	+74	+130	+96	+227	+366	+239	+218
25%	15%	2%	2%	1%	1%	1%	1%



Lesikar Ranch Angus Bulls



Lesikar Growth Fund K110 - Lot 1



Lesikar Growth Fund K121 - Lot 2

1 LESIKAR GROWTH FUND K110

Birth Date: 01-04-2022 Bull 20498302 Tattoo: K110

#+*Basin Payweight 1682	#+*Basin Payweight 006S	\$M	+52	80%
+*Deer Valley Growth Fund	21AR O Lass 7017	\$W	+82	3%
18827828	+*Deer Valley Rita 36113	\$F	+124	2%
ANGUS <small>365</small>	#*Plattmehere Weigh Up K360	\$G	+33	85%
#S A V 8180 Traveler 004	+Deer Valley Rita 9457	\$B	+157	30%
+Lesikar Burgess X928	#Sitz Traveler 8180	\$C	+256	40%
16658728	+Boyd Forever Lady 8003	\$A,H	+144	25%
	#+Leachman Right Time	\$A,J	+146	20%
	+Acf Burgess 9523			

CED	BW	WW	YW	SC	MILK	RE	MARB
+5	+7	+86	+153	+51	+32	+84	+26
65%	40%	4%	4%	75%	15%	25%	90%

CED	BW	WW	YW	DMI	YH	SC	DOC	HP	CEM	MILK	MW	MH	CW	MARB	RE	FAT	TEND
29	17	1	4	100	14	67	66	74	7	24	1	3	1	66	29	97	3

2 LESIKAR GROWTH FUND K121

Birth Date: 01-16-2022 Bull 20390996 Tattoo: K121

#+*Basin Payweight 1682	#+*Basin Payweight 006S	\$M	+84	10%
+*Deer Valley Growth Fund	21AR O Lass 7017	\$W	+72	15%
18827828	+*Deer Valley Rita 36113	\$F	+115	5%
ANGUS <small>365</small>	#*Plattmehere Weigh Up K360	\$G	+31	90%
#+S A V Bismarck 5682	+Deer Valley Rita 9457	\$B	+146	40%
+Lesikar Blackcap X961	#+*G A R Grid Maker	\$C	+273	25%
16871845	S A V Abigale 0451	\$A,H	+144	25%
	#Bon View New Design 208	\$A,J	+123	30%
	+A Plus Blackcap 0140			

CED	BW	WW	YW	SC	MILK	RE	MARB
+10	+2	+75	+135	+1.25	+21	+58	+30
20%	30%	20%	15%	30%	85%	60%	85%

CED	BW	WW	YW	DMI	YH	SC	DOC	HP	CEM	MILK	MW	MH	CW	MARB	RE	FAT	TEND
33	33	18	19	42	73	41	40	17	41	81	69	73	21	79	61	88	31

Lesikar Ranch Angus Bulls



Lesikar Growth Fund K131 - Lot 3



Lesikar Growth Fund J990 - Lot 4



3 LESIKAR GROWTH FUND K131

Birth Date: 02-27-2022 Bull *20390984 Tattoo: K131

#+*Basin Payweight 1682	#+*Basin Payweight 006S	\$M +64	50%
+*Deer Valley Growth Fund	21AR O Lass 7017	\$W +72	15%
18827828	+*Deer Valley Rita 36113	\$F +92	35%
ANGUS ³⁶	#*Plattemere Weigh Up K360	\$G +31	90%
<small>Powered by MyAngus.com</small>	+Deer Valley Rita 9457	\$B +124	70%
#+O C C Emblazon 854E	#D H D Traveler 6807	\$C +225	70%
+Lesikar Traveler Lady B619	Dixie Erica of C H 1019	\$A,H +113	45%
18126205	+MJB Traveler Lady 398 87921	\$A,J +114	35%
	#D H D Traveler 6807		
	+HHF Precision Lady 704 398		

CED	BW	WW	YW	SC	MILK	RE	MARB
+9	+1.1	+74	+141	+46	+32	+.73	+.23
30%	50%	20%	10%	80%	15%	40%	90%

CED	BW	WW	YW	DMI	YH	SC	DOC	HP	CEM	MILK	MW	MH	CW	MARB	RE	FAT	TEND
39	60	26	6	93	58	73	18	52	10	37	23	49	43	89	45	88	98

4 LESIKAR GROWTH FUND J990

Birth Date: 11-01-2021 Bull *20227680 Tattoo: J990

#+*Basin Payweight 1682	#+*Basin Payweight 006S	\$M +50	85%
+*Deer Valley Growth Fund	21AR O Lass 7017	\$W +72	15%
18827828	+*Deer Valley Rita 36113	\$F +85	50%
ANGUS ³⁶	#*Plattemere Weigh Up K360	\$G +47	60%
<small>Powered by MyAngus.com</small>	+Deer Valley Rita 9457	\$B +132	60%
#+O C C Emblazon 854E	#+O C C Emblazon 854E	\$C +221	75%
Lesikar Blackbird G602	+Sedgwicks Barbara 087	\$A,H +97	55%
19512635	Lesikar Blackbird B570	\$A,J +52	70%
	+O C C Broadside 876B		
	Lesikar Blackbird X134		

CED	BW	WW	YW	SC	MILK	RE	MARB
+13	-.6	+66	+116	+44	+35	+.54	+.60
10%	15%	40%	45%	80%	10%	65%	55%

CED	BW	WW	YW	DMI	YH	SC	DOC	HP	CEM	MILK	MW	MH	CW	MARB	RE	FAT	TEND
10	14	47	61	46	87	77	94	36	66	20	31	67	44	52	51	91	72

For up-to-date information regarding upcoming Events.

Follow us on:



Lesikar Ranch Angus Bulls



Lesikar Growth Fund J983 - Lot 5

5 LESIKAR GROWTH FUND J983

Birth Date: 10-21-2021 Bull *20227705 Tattoo: J983

#**Basin Payweight 1682	#**Basin Payweight 006S	\$M	+74	25%
**Deer Valley Growth Fund	21AR O Lass 7017	\$W	+66	30%
18827828	**Deer Valley Rita 36113	\$F	+82	55%
ANGUS <small>Powered by Angus Connect</small>	**Plattemere Weigh Up K360	\$G	+30	90%
O C C Practical 841P	+Deer Valley Rita 9457	\$B	+112	85%
Lesikar Blackcap D778	+O C C Focus 813F	\$C	+219	75%
18895554	O C C Juanada 968G	\$A.H	+10	90%
Lesikar Blackcap B391	+O C C Broadside 876B	\$A.J	-17	95%
	+Lesikar Blackcap Y817			

CED	BW	WW	YW	SC	MILK	RE	MARB
+14	+3	+67	+119	+91	+23	+20	+36
4%	30%	40%	40%	50%	75%	95%	80%

CED	BW	WW	YW	DMI	YH	SC	DOC	HP	CEM	MILK	MW	MH	CW	MARB	RE	FAT	TEND
14	43	19	37	94	55	58	85	28	4	73	48	60	37	50	97	90	7

6 LESIKAR GROWTH FUND K821

Birth Date: 02-14-2022 Bull *20390980 Tattoo: K821

#**Basin Payweight 1682	#**Basin Payweight 006S	\$M	+58	70%
**Deer Valley Growth Fund	21AR O Lass 7017	\$W	+65	35%
18827828	**Deer Valley Rita 36113	\$F	+87	45%
ANGUS <small>Powered by Angus Connect</small>	**Plattemere Weigh Up K360	\$G	+56	40%
+Lesikar Rebound X931	+Deer Valley Rita 9457	\$B	+143	45%
Lesikar Burgess C672	+O C C Emblazon 854E	\$C	+243	50%
18514406	+Sedgwicks Barbara 087	\$A.H	+127	35%
+LAR Burgess S503	#B/R New Design 036	\$A.J	+102	40%
	+Twin Eagles Burgess 316N			

CED	BW	WW	YW	SC	MILK	RE	MARB
+6	+8	+63	+112	+24	+29	+64	+73
55%	40%	50%	50%	90%	35%	50%	40%

CED	BW	WW	YW	DMI	YH	SC	DOC	HP	CEM	MILK	MW	MH	CW	MARB	RE	FAT	TEND
31	15	68	60	48	80	79	72	10	68	44	55	81	56	30	42	79	63



Lesikar Growth Fund K124 - Lot 10

7 LESIKAR GROWTH FUND K130

Birth Date: 02-23-2022 Bull *20390972 Tattoo: K130

#**Basin Payweight 1682	#**Basin Payweight 006S	\$M	+67	40%
**Deer Valley Growth Fund	21AR O Lass 7017	\$W	+69	25%
18827828	**Deer Valley Rita 36113	\$F	+88	45%
ANGUS <small>Powered by Angus Connect</small>	**Plattemere Weigh Up K360	\$G	+23	95%
+Lesikar Rebound X931	+Deer Valley Rita 9457	\$B	+111	85%
*Lesikar Heatherbloom D830	+O C C Emblazon 854E	\$C	+211	85%
18891987	Lesikar Heatherbloom B448	\$A.H	+106	50%
	+Sedgwicks Barbara 087	\$A.J	+79	55%
	+*O C C Paxton 730P			
	LAR Heatherbloom P224			

CED	BW	WW	YW	SC	MILK	RE	MARB
+12	+5	+69	+125	+44	+28	+76	+05
10%	35%	35%	30%	80%	40%	35%	95%

CED	BW	WW	YW	DMI	YH	SC	DOC	HP	CEM	MILK	MW	MH	CW	MARB	RE	FAT	TEND
16	44	49	29	44	95	82	47	32	51	75	51	88	78	93	52	74	58

8 LESIKAR GROWTH FUND K803

Birth Date: 01-08-2022 Bull *20390987 Tattoo: K803

#**Basin Payweight 1682	#**Basin Payweight 006S	\$M	+91	3%
**Deer Valley Growth Fund	21AR O Lass 7017	\$W	+73	15%
18827828	**Deer Valley Rita 36113	\$F	+88	45%
ANGUS <small>Powered by Angus Connect</small>	**Plattemere Weigh Up K360	\$G	+40	75%
+Lesikar Emblazon X947	+Deer Valley Rita 9457	\$B	+129	65%
Lesikar Erica B559	+O C C Emblazon 854E	\$C	+258	35%
17863017	Lesikar Erica Z293	\$A.H	+108	45%
	#B C C Bushwacker 41-93	\$A.J	+93	45%
	A H A Ritos Traveler			

CED	BW	WW	YW	SC	MILK	RE	MARB
+9	-.5	+61	+102	+27	+30	+59	+44
30%	20%	55%	70%	85%	25%	60%	75%

CED	BW	WW	YW	DMI	YH	SC	DOC	HP	CEM	MILK	MW	MH	CW	MARB	RE	FAT	TEND
24	10	74	85	20	70	73	77	12	14	54	99	92	62	62	69	89	75

9 LESIKAR GROWTH FUND K853

Birth Date: 04-14-2022 Bull *20390957 Tattoo: K853

#**Basin Payweight 1682	#**Basin Payweight 006S	\$M	+69	35%
**Deer Valley Growth Fund	21AR O Lass 7017	\$W	+77	10%
18827828	**Deer Valley Rita 36113	\$F	+91	35%
ANGUS <small>Powered by Angus Connect</small>	**Plattemere Weigh Up K360	\$G	+46	60%
+Lesikar Surefire X126	+Deer Valley Rita 9457	\$B	+138	50%
Lesikar Juana F322	+O C C Emblazon 854E	\$C	+248	45%
19402237	Lesikar Juana X675	\$A.H	+90	60%
	#S A V Mandan 5664	\$A.J	+58	65%
	LAR Juana R290			

CED	BW	WW	YW	SC	MILK	RE	MARB
+6	+3.6	+73	+120	+1.37	+35	+58	+56
55%	95%	25%	35%	20%	10%	60%	60%

CED	BW	WW	YW	DMI	YH	SC	DOC	HP	CEM	MILK	MW	MH	CW	MARB	RE	FAT	TEND
51	89	20	59	38	44	27	66	91	74	14	75	91	32	57	68	88	14

10 LESIKAR GROWTH FUND K124

Birth Date: 02-12-2022 Bull *20390981 Tattoo: K124

#**Basin Payweight 1682	#**Basin Payweight 006S	\$M	+62	55%
**Deer Valley Growth Fund	21AR O Lass 7017	\$W	+76	10%
18827828	**Deer Valley Rita 36113	\$F	+112	10%
ANGUS <small>Powered by Angus Connect</small>	**Plattemere Weigh Up K360	\$G	+53	45%
+Lesikar Legacy W607	+Deer Valley Rita 9457	\$B	+165	20%
Lesikar Blackcap C753	+O C C Emblazon 854E	\$C	+276	20%
18514295	+Lesikar Blackcap Y218	\$A.H	+121	40%
	+A Plus Blackcap 0037	\$A.J	+98	45%
	+*O C C Jupiter 671J			
	+G A R Expectation 1643			

CED	BW	WW	YW	SC	MILK	RE	MARB
+10	-.2	+78	+143	+68	+30	+76	+60
20%	20%	15%	10%	65%	25%	35%	55%

CED	BW	WW	YW	DMI	YH	SC	DOC	HP	CEM	MILK	MW	MH	CW	MARB	RE	FAT	TEND
6	9	12	6	90	33	49	73	17	4	53	11	26	6	39	31	39	55

Lesikar Ranch Angus Bulls

11 LESIKAR GROWTH FUND J104

Birth Date: 12-30-2021 Bull 20386555 Tattoo: J104

#**Basin Payweight 1682	#**Basin Payweight 006S	\$M	+82	10%
*Deer Valley Growth Fund	21AR O Lass 7017	\$W	+75	10%
18827828	#*Plattemere Weigh Up K360	\$F	+88	45%
ANGUS <small>Powered by Angus Connect</small>	+Deer Valley Rita 9457	\$G	+39	75%
O C C Legend 616L	#+O C C Emblazon 854E	\$B	+127	70%
*Lesikar Lady Belle Y252	O C C Blackbird 632J	\$C	+247	50%
17175111	#D H D Traveler 6807	\$A,H	+5	95%
	+HHF Precision Lady 704 398	\$A,J	-14	95%

CED	BW	WW	YW	SC	MILK	RE	MARB
+4	+3.6	+76	+127	+1.19	+30	+1.18	+56
70%	95%	15%	25%	30%	25%	95%	60%

CED	BW	WW	YW	DMI	YH	SC	DOC	HP	CEM	MILK	MW	MH	CW	MARB	RE	FAT	TEND
81	95	9	30	68	37	27	37	44	81	37	58	80	25	62	97	100	63



Lesikar Growth Fund J104 - Lot 11

12 LESIKAR GROWTH FUND K109

Birth Date: 01-03-2022 Bull *20390971 Tattoo: K109

#**Basin Payweight 1682	#**Basin Payweight 006S	\$M	+81	10%
*Deer Valley Growth Fund	21AR O Lass 7017	\$W	+72	15%
18827828	#*Plattemere Weigh Up K360	\$F	+75	75%
ANGUS <small>Powered by Angus Connect</small>	+Deer Valley Rita 9457	\$G	+56	40%
+Lesikar Eureka Z371	#*O C C Eureka 865E	\$B	+131	60%
Lesikar Blackcap F496	+MJB Traveler Lady 398 87921	\$C	+251	45%
19183376	#*O C C Paxton 730P	\$A,H	+106	50%
	+Lesikar Blackcap X620	\$A,J	+92	45%

CED	BW	WW	YW	SC	MILK	RE	MARB
+1	+2.1	+64	+113	+61	+35	+69	+69
90%	70%	45%	50%	70%	10%	45%	45%

CED	BW	WW	YW	DMI	YH	SC	DOC	HP	CEM	MILK	MW	MH	CW	MARB	RE	FAT	TEND
52	30	55	70	41	61	43	57	10	57	20	93	90	55	49	52	63	60



15 LESIKAR GROWTH FUND J995

Birth Date: 12-09-2021 Bull *20390965 Tattoo: J995

#**Basin Payweight 1682	#**Basin Payweight 006S	\$M	+81	10%
*Deer Valley Growth Fund	21AR O Lass 7017	\$W	+78	10%
18827828	#*Plattemere Weigh Up K360	\$F	+92	35%
ANGUS <small>Powered by Angus Connect</small>	+Deer Valley Rita 9457	\$G	+41	70%
+Lesikar Traveler Z946	#D H D Traveler 6807	\$B	+133	60%
Lesikar Burgess F493	+A Plus Blackcap 0037	\$C	+254	40%
19183886	#*Connealy All Around	\$A,H	+82	65%
	+Lesikar Burgess T667	\$A,J	+49	70%

CED	BW	WW	YW	SC	MILK	RE	MARB
+11	-.3	+61	+106	+14	+44	+53	+52
15%	20%	55%	60%	90%	1%	70%	65%

CED	BW	WW	YW	DMI	YH	SC	DOC	HP	CEM	MILK	MW	MH	CW	MARB	RE	FAT	TEND
1	1	77	81	12	76	94	21	20	5	2	88	85	74	57	90	100	65

13 LESIKAR GROWTH FUND K117

Birth Date: 01-12-2022 Bull *20390970 Tattoo: K117

#**Basin Payweight 1682	#**Basin Payweight 006S	\$M	+78	15%
*Deer Valley Growth Fund	21AR O Lass 7017	\$W	+77	10%
18827828	#*Plattemere Weigh Up K360	\$F	+78	65%
ANGUS <small>Powered by Angus Connect</small>	+Deer Valley Rita 9457	\$G	+50	50%
Lesikar Paxton Y201	#*O C C Paxton 730P	\$B	+128	65%
Lesikar Princess F505	EF Rita 8475	\$C	+244	50%
19183435	#*S S Objective T510 OT26	\$A,H	+141	25%
	Sedgwicks Princess 8940	\$A,J	+117	35%

CED	BW	WW	YW	SC	MILK	RE	MARB
+9	-.3	+75	+130	+57	+26	+61	+70
30%	20%	20%	20%	70%	55%	55%	45%

CED	BW	WW	YW	DMI	YH	SC	DOC	HP	CEM	MILK	MW	MH	CW	MARB	RE	FAT	TEND
17	12	27	30	76	99	72	17	43	48	73	45	93	67	28	52	99	81

16 LESIKAR GROWTH FUND J980

Birth Date: 10-15-2021 Bull *20227688 Tattoo: J980

#**Basin Payweight 1682	#**Basin Payweight 006S	\$M	+77	20%
*Deer Valley Growth Fund	21AR O Lass 7017	\$W	+81	4%
18827828	#*Plattemere Weigh Up K360	\$F	+112	10%
ANGUS <small>Powered by Angus Connect</small>	+Deer Valley Rita 9457	\$G	+24	95%
+Lesikar Traveler Z946	#D H D Traveler 6807	\$B	+135	55%
Lesikar Precision G574	+A Plus Blackcap 0037	\$C	+252	45%
19402255	#O C C Anchor 771A	\$A,H	+105	50%
	+*G A R Precision 183	\$A,J	+107	40%

CED	BW	WW	YW	SC	MILK	RE	MARB
+7	+1.4	+74	+135	+04	+41	+83	+0
45%	55%	20%	15%	95%	1%	25%	95%

CED	BW	WW	YW	DMI	YH	SC	DOC	HP	CEM	MILK	MW	MH	CW	MARB	RE	FAT	TEND
35	47	22	13	88	44	93	13	28	18	4	41	44	17	96	42	32	42

14 LESIKAR GROWTH FUND K134

Birth Date: 03-04-2022 Bull *20390949 Tattoo: K134

#**Basin Payweight 1682	#**Basin Payweight 006S	\$M	+60	60%
*Deer Valley Growth Fund	21AR O Lass 7017	\$W	+65	35%
18827828	#*Plattemere Weigh Up K360	\$F	+92	35%
ANGUS <small>Powered by Angus Connect</small>	+Deer Valley Rita 9457	\$G	+50	50%
+Lesikar Broadside B545	+O C C Broadside 876B	\$B	+142	45%
Lesikar Princess G644	EF Rita 8475	\$C	+244	50%
19512677	+Lesikar Legacy W607	\$A,H	+89	60%
	+Twin Eagles Princess 775L	\$A,J	+51	70%

CED	BW	WW	YW	SC	MILK	RE	MARB
+13	-.2	+61	+116	+27	+34	+47	+65
10%	20%	55%	45%	85%	10%	75%	50%

CED	BW	WW	YW	DMI	YH	SC	DOC	HP	CEM	MILK	MW	MH	CW	MARB	RE	FAT	TEND
7	22	55	35	58	49	74	73	46	26	21	42	58	35	38	65	62	82



Lesikar Growth Fund J980 - Lot 16

Lesikar Ranch Angus Bulls



Lesikar Payweight J706 - Lot 17

17 LESIKAR PAYWEIGHT J706

Birth Date: 08-08-2021 Bull *20231835 Tattoo: J706

#**Basin Payweight 006S	#Vermilion Payweight J847	\$M	+74	25%
#**Basin Payweight 1682	+Basin Lucy 3829	\$W	+68	25%
17038724 21AR O Lass 7017	#HARB Pendleton 765 J H	\$F	+103	15%
ANGUS^{3S}	21AR O Lass F24A	\$G	+62	30%
Powered by Angus Connect	#+O C C Emblazon 854E	\$B	+165	20%
*+O C C Rancher 680R	O C C Juanada 775C	\$C	+288	15%
Lesikar Queenie D772	#*S S Objective T510 0T26	\$A,H	+107	50%
19028864 +Lesikar Queenie W458	+Premium Gold Queenie 302R	\$A,J	+57	65%

CED	BW	WW	YW	SC	MILK	RE	MARB
+6	+2.5	+70	+125	+29	+26	+36	+92
55%	80%	30%	30%	85%	55%	90%	25%

CED	BW	WW	YW	DMI	YH	SC	DOC	HP	CEM	MILK	MW	MH	CW	MARB	RE	FAT	TEND
67	81	20	10	93	86	72	58	35	19	57	51	89	15	19	92	57	51

18 LESIKAR JET BLACK K135

Birth Date: 03-06-2022 Bull **20311495 Tattoo: K135

#*Connealy Black Granite	#*Connealy Consensus 7229	\$M	+66	45%
*Bar R Jet Black 5063	#Eura Elga of Conanga 9109	\$W	+72	15%
18389838 Bar R Iris Anita 0113	#*Sitz Upward 307R	\$F	+111	10%
ANGUS^{3S}	Bar R Anita 7081	\$G	+64	25%
Powered by Angus Connect	#*B/R Future Direction 4268	\$B	+175	15%
#**WR Journey-1X74	2 Bar 5050 New Design 7831	\$C	+293	15%
*+Elm Creek Rita 7J10	#**Rito 9Q13 of Rita 5F56 GHM	\$A,H	+185	10%
19059190 +*Elm Creek Rita 4Q16	+*DZ Ingenuity 2N16	\$A,J	+195	4%

CED	BW	WW	YW	SC	MILK	RE	MARB
+11	+2.4	+82	+138	+1.57	+23	+1.02	+74
15%	80%	10%	15%	15%	75%	10%	40%

CED	BW	WW	YW	DMI	YH	SC	DOC	HP	CEM	MILK	MW	MH	CW	MARB	RE	FAT	TEND
40	78	31	44	10	63	9	31	53	90	68	34	26	30	48	10	33	78



Lesikar Jet Black K135 - Lot 18

19 LESIKAR TAHOE K113

Birth Date: 01-08-2022 Bull *20390953 Tattoo: K113

*Tehama Upward Y238	#*Sitz Upward 307R	\$M	+65	50%
#**Tehama Tahoe B767	+Tehama Elite Blackbird T735	\$W	+55	65%
17817177 +*Tehama Mary Blackbird Y684	#*S A V Final Answer 0035	\$F	+61	95%
ANGUS^{3S}	Tehama Mary Blackbird T073	\$G	+56	40%
Powered by Angus Connect	#D H D Traveler 6807	\$B	+116	80%
+Lesikar Traveler Z946	+A Plus Blackcap 0037	\$C	+215	80%
Lesikar Rita G639	+Lesikar Rebound X931	\$A,H	+109	45%
19512676 Lesikar Rita C629	Lesikar Rita Z306	\$A,J	+87	50%

CED	BW	WW	YW	SC	MILK	RE	MARB
+10	-.1	+54	+91	-.03	+21	+55	+70
20%	25%	75%	85%	95%	85%	60%	45%

CED	BW	WW	YW	DMI	YH	SC	DOC	HP	CEM	MILK	MW	MH	CW	MARB	RE	FAT	TEND
48	63	63	66	66	92	93	51	18	98	96	80	97	90	46	52	46	76

20 LESIKAR PIONEER J756

Birth Date: 09-21-2021 Bull 20225803 Tattoo: J756

#S A V Pioneer 7301	#*S A V Final Answer 0035	\$M	+59	65%
Lesikar Pioneer F228	S A V Blackbird 5297	\$W	+64	35%
19402130 +Lesikar Blackcap Y878	#+B C Lookout 7024	\$F	+61	95%
ANGUS^{3S}	+A Plus Blackcap 0037	\$G	+48	55%
Powered by Angus Connect	+O C C Exodus 712E	\$B	+109	90%
#O C C Glory 950G	O C C Dixie Erica 971E	\$C	+200	90%
Lesikar Queenie Z178	#Sitz Alliance 6595	\$A,H	+58	75%
17573998 +Twin Eagles Queenie 500P	#+G A R Ext 916	\$A,J	+31	80%

CED	BW	WW	YW	SC	MILK	RE	MARB
+8	+9	+56	+92	+1.66	+31	+23	+69
35%	45%	70%	80%	10%	20%	95%	45%

CED	BW	WW	YW	DMI	YH	SC	DOC	HP	CEM	MILK	MW	MH	CW	MARB	RE	FAT	TEND
40	52	42	58	40	36	10	49	67	64	23	60	44	82	40	93	84	15

21 LESIKAR EMERALD J757

Birth Date: 09-21-2021 Bull *20233605 Tattoo: J757

#*Connealy Confidence Plus	#*Connealy Confidence 0100	\$M	+69	35%
*Connealy Emerald	Elbanna of Conanga 1209	\$W	+62	40%
19257149 Jace of Conanga 6571	#*Connealy Armory	\$F	+71	85%
ANGUS^{3S}	+Jazzy of Conanga 4660 860C	\$G	+69	20%
Powered by Angus Connect	#*B/R New Day 454	\$B	+140	50%
#**V A R Reserve 1111	+*Sandpoint Blackbird 8809	\$C	+251	45%
Lesikar Dixie Erica F271	+LAR Designer N127	\$A,H	+121	40%
19403166 Lesikar Dixie Erica U326	L A R Dixie Erica P194	\$A,J	+104	40%

CED	BW	WW	YW	SC	MILK	RE	MARB
+5	+1.3	+61	+104	+1.03	+26	+72	+90
65%	55%	55%	65%	40%	55%	40%	25%

CED	BW	WW	YW	DMI	YH	SC	DOC	HP	CEM	MILK	MW	MH	CW	MARB	RE	FAT	TEND
44	33	61	68	34	71	59	85	44	82	87	80	82	80	27	46	25	33

22 LESIKAR EMERALD J986

Birth Date: 10-27-2021 Bull *20231996 Tattoo: J986

#*Connealy Confidence Plus	#*Connealy Confidence 0100	\$M	+81	10%
*Connealy Emerald	Elbanna of Conanga 1209	\$W	+56	60%
19257149 Jace of Conanga 6571	#*Connealy Armory	\$F	+76	70%
ANGUS^{3S}	+Jazzy of Conanga 4660 860C	\$G	+67	20%
Powered by Angus Connect	+O C C Focus 813F	\$B	+143	45%
O C C Practical 841P	O C C Juanada 968G	\$C	+266	30%
Lesikar Blackcap C724	#O C C Anchor 771A	\$A,H	+135	30%
18514266 +Lesikar Blackcap A431	+A Plus Blackcap 0037	\$A,J	+86	50%

CED	BW	WW	YW	SC	MILK	RE	MARB
+11	-1.2	+50	+92	+1.10	+24	+56	+97
15%	10%	85%	80%	95%	70%	65%	20%

CED	BW	WW	YW	DMI	YH	SC	DOC	HP	CEM	MILK	MW	MH	CW	MARB	RE	FAT	TEND
14	13	75	65	25	98	76	73	12	84	58	84	97	79	17	46	70	54

Lesikar Ranch Angus Bulls

23 LESIKAR EMERALD J798

Birth Date: 12-20-2021 Bull *20391506 Tattoo: J798

*Connealy Confidence Plus	Elbanna of Conanga 1209	\$M	+50	85%
*Connealy Emerald	Elbanna of Conanga 1209	\$W	+68	25%
19257149 Jace of Conanga 6571	*Connealy Armory	\$F	+117	5%
ANGUS 3S	+Jazzy of Conanga 4660 860C	\$G	+45	60%
+Lesikar Emblazon W604	*#O C C Emblazon 854E	\$B	+162	25%
Lesikar Queenie G387	+A Plus Blackcap 0037	\$C	+260	35%
19512631 Lesikar Queenie Y937	+*O C C Jupiter 671J	\$A.H	+153	20%
	+Twin Eagles Queenie 500P	\$A.J	+149	20%

CED	BW	WW	YW	SC	MILK	RE	MARB
+4	+2.7	+89	+154	+0	+17	+1.12	+29
70%	85%	3%	3%	95%	95%	4%	85%

CED	BW	WW	YW	DMI	YH	SC	DOC	HP	CEM	MILK	MW	MH	CW	MARB	RE	FAT	TEND
68	77	4	6	92	52	73	37	59	96	96	5	29	6	78	4	5	37



Lesikar Emerald J100 - Lot 27

24 LESIKAR EMERALD J784

Birth Date: 11-04-2021 Bull *20391511 Tattoo: J784

*Connealy Confidence Plus	Elbanna of Conanga 1209	\$M	+70	35%
*Connealy Emerald	Elbanna of Conanga 1209	\$W	+57	55%
19257149 Jace of Conanga 6571	*Connealy Armory	\$F	+66	90%
ANGUS 3S	+Jazzy of Conanga 4660 860C	\$G	+49	55%
+Lesikar Rebound X931	*#O C C Emblazon 854E	\$B	+115	80%
*Lesikar Juana E945	+Sedgwicks Barbara 087	\$C	+219	75%
19222769 Lesikar Juana C493	+Lesikar Emblazon W604	\$A.H	+47	80%
	LAR Juana R290	\$A.J	+5	90%

CED	BW	WW	YW	SC	MILK	RE	MARB
+6	+1.3	+61	+103	+70	+22	+50	+66
55%	55%	55%	65%	65%	80%	75%	50%

CED	BW	WW	YW	DMI	YH	SC	DOC	HP	CEM	MILK	MW	MH	CW	MARB	RE	FAT	TEND
52	50	55	74	44	77	68	15	11	100	80	63	80	86	48	63	89	52

27 LESIKAR EMERALD J100

Birth Date: 12-21-2021 Bull 20386554 Tattoo: J100

*Connealy Confidence Plus	Elbanna of Conanga 1209	\$M	+67	40%
*Connealy Emerald	Elbanna of Conanga 1209	\$W	+59	50%
19257149 Jace of Conanga 6571	*Connealy Armory	\$F	+86	50%
ANGUS 3S	+Jazzy of Conanga 4660 860C	\$G	+55	40%
#S A V 8180 Traveler 004	*Sitz Traveler 8180	\$B	+141	50%
*Lesikar Blackcap Y203	+Boyd Forever Lady 8003	\$C	+250	45%
17169411 +Twin Eagles Blackcap 418P	*#Rito 616 of 4B20 6807	\$A.H	+105	50%
	+P A B Blackcap 920	\$A.J	+78	55%

CED	BW	WW	YW	SC	MILK	RE	MARB
+6	+2.2	+67	+121	+1.06	+23	+73	+65
55%	75%	40%	35%	40%	75%	40%	50%

CED	BW	WW	YW	DMI	YH	SC	DOC	HP	CEM	MILK	MW	MH	CW	MARB	RE	FAT	TEND
30	44	61	48	36	74	33	56	43	27	90	64	65	80	56	58	40	31

25 LESIKAR TAHOE K141

Birth Date: 03-10-2022 Bull 20391528 Tattoo: K141

*Connealy Confidence Plus	Elbanna of Conanga 1209	\$M	+83	10%
*Connealy Emerald	Elbanna of Conanga 1209	\$W	+67	30%
19257149 Jace of Conanga 6571	*Connealy Armory	\$F	+67	90%
ANGUS 3S	+Jazzy of Conanga 4660 860C	\$G	+35	80%
*#O C C Missing Link 830M	*O C C Headliner 661H	\$B	+102	95%
*Lesikar Blackcap Y901	+*O C C Dixie Erica 946K	\$C	+215	80%
17175137 G A R Objective 1765	*#S S Objective T510 OT26	\$A.H	+69	70%
	+G A R 1407 New Design 2453	\$A.J	+37	75%

CED	BW	WW	YW	SC	MILK	RE	MARB
+7	+4	+65	+109	+32	+24	+53	+32
45%	35%	45%	55%	85%	70%	70%	85%

CED	BW	WW	YW	DMI	YH	SC	DOC	HP	CEM	MILK	MW	MH	CW	MARB	RE	FAT	TEND
28	12	47	66	51	73	75	43	34	66	75	60	65	73	93	42	38	40

28 LESIKAR EMERALD K125

Birth Date: 02-16-2022 Bull 20391529 Tattoo: K125

*Connealy Confidence Plus	Elbanna of Conanga 1209	\$M	+56	75%
*Connealy Emerald	Elbanna of Conanga 1209	\$W	+54	65%
19257149 Jace of Conanga 6571	*Connealy Armory	\$F	+90	40%
ANGUS 3S	+Jazzy of Conanga 4660 860C	\$G	+45	60%
*#G A R Predestined	*#B/R New Design 036	\$B	+135	55%
Lesikar Barbara X107	+*G A R Ext 4206	\$C	+231	65%
16871783 +LAR Barbara N112	*Sitz Traveler 8180	\$A.H	+25	90%
	+Sedgwicks Barbara 087	\$A.J	-2	90%

CED	BW	WW	YW	SC	MILK	RE	MARB
+2	+1.1	+61	+103	+20	+18	+61	+48
85%	50%	55%	65%	90%	95%	55%	70%

CED	BW	WW	YW	DMI	YH	SC	DOC	HP	CEM	MILK	MW	MH	CW	MARB	RE	FAT	TEND
41	9	86	81	21	79	94	36	96	15	92	79	69	88	84	71	14	10

26 LESIKAR EMERALD K108

Birth Date: 01-03-2022 Bull 20391531 Tattoo: K108

*Connealy Confidence Plus	Elbanna of Conanga 1209	\$M	+55	75%
*Connealy Emerald	Elbanna of Conanga 1209	\$W	+52	70%
19257149 Jace of Conanga 6571	*Connealy Armory	\$F	+79	65%
ANGUS 3S	+Jazzy of Conanga 4660 860C	\$G	+61	30%
+LAR Designer N127	*#B/R New Design 036	\$B	+140	50%
Lesikar Miss X945	+Sedgwicks Barbara 087	\$C	+237	60%
16658862 +Twin Eagles Miss 625K	*#V D A R Ambush 1465 S A F	\$A.H	+109	45%
	W C S Ext R70	\$A.J	+99	45%

CED	BW	WW	YW	SC	MILK	RE	MARB
-1	+2.6	+53	+97	+77	+32	+82	+72
95%	80%	80%	75%	60%	15%	25%	45%

CED	BW	WW	YW	DMI	YH	SC	DOC	HP	CEM	MILK	MW	MH	CW	MARB	RE	FAT	TEND
93	72	72	58	14	70	59	27	21	77	30	51	51	83	44	24	21	34

29 LESIKAR EMERALD K112

Birth Date: 01-05-2022 Bull *20391509 Tattoo: K112

*Connealy Confidence Plus	Elbanna of Conanga 1209	\$M	+60	60%
*Connealy Emerald	Elbanna of Conanga 1209	\$W	+55	65%
19257149 Jace of Conanga 6571	*Connealy Armory	\$F	+44	95%
ANGUS 3S	+Jazzy of Conanga 4660 860C	\$G	+61	30%
*#Schiefelbein Effective 61	*#CAR Efficient 534	\$B	+106	90%
*Lesikar Miss F538	+*Frosty Answer 3979	\$C	+197	90%
19402200 Lesikar Miss C746	Lesikar Paxton Y201	\$A.H	+86	60%
	Lesikar Miss X945	\$A.J	+40	75%

CED	BW	WW	YW	SC	MILK	RE	MARB
+10	-2.1	+45	+87	+79	+30	+38	+89
20%	3%	95%	90%	60%	25%	85%	25%

CED	BW	WW	YW	DMI	YH	SC	DOC	HP	CEM	MILK	MW	MH	CW	MARB	RE	FAT	TEND
3	1	97	95	11	99	56	68	67	69	50	93	99	100	30	88	84	11

Lesikar Ranch Angus Bulls



Lesikar Consensus J786 - Lot 30

33 LESIKAR PERSEVERANCE J710

Birth Date: 08-09-2021 Bull *20231953 Tattoo: J710

#*Plattemere Weigh Up K360	#*Sitz Upward 307R	\$M	+51	85%
Mead Perseverance R1266	#Barbara of Plattemere 337	\$W	+60	45%
19162202 #Mead Miss Marathon L835	#Connealy Answer 71	\$F	+83	55%
ANGUS #Lesikar Paxton Y835	#Mead Miss Marathon J630	\$G	+52	45%
Lesikar Pride D699	#*O C C Paxton 730P	\$B	+135	55%
18514340 Lesikar Pride Z165	+L A R Barbara R360	\$C	+226	70%
	+Lesikar Emblazon W604	\$A,H	+100	50%
	Lesikar Pride S618	\$A,J	+63	65%

CED	BW	WW	YW	SC	MILK	RE	MARB
+10	-.2	+64	+110	+1.06	+22	+67	+61
20%	20%	45%	55%	40%	80%	45%	55%

CED	BW	WW	YW	DMI	YH	SC	DOC	HP	CEM	MILK	MW	MH	CW	MARB	RE	FAT	TEND
50	38	37	35	86	77	43	95	38	81	79	36	52	62	48	51	43	96

30 LESIKAR CONSENSUS J786

Birth Date: 11-06-2021 Bull 20391482 Tattoo: J786

#*Connealy Consensus	#KMK Alliance 6595 I87	\$M	+75	20%
#*Connealy Consensus 7229	Blinda of Conanga 004	\$W	+60	45%
16447771 Blue Lilly of Conanga 16	#Woodhill Admiral 77K	\$F	+68	90%
ANGUS #Jauer 7111 Traveler 353 719	Blue Cash of Conanga 6020	\$G	+44	65%
+Lesikar Blackcap Y939	Jauer 6807 Traveler 27 085	\$B	+112	85%
17172860 +A Plus Blackcap 0037	#*N Bar Emulation EXT	\$C	+220	75%
	#G A R Scotch Cap 867	\$A,H	+65	75%
		\$A,J	+26	80%

CED	BW	WW	YW	SC	MILK	RE	MARB
+9	+6	+55	+86	-.14	+22	+64	+45
30%	35%	75%	90%	95%	80%	50%	75%

CED	BW	WW	YW	DMI	YH	SC	DOC	HP	CEM	MILK	MW	MH	CW	MARB	RE	FAT	TEND
34	30	32	81	39	49	95	94	33	95	65	75	66	70	67	34	34	81

34 LESIKAR PERSEVERANCE J716

Birth Date: 08-10-2021 Bull 20231968 Tattoo: J716

#*Plattemere Weigh Up K360	#*Sitz Upward 307R	\$M	+75	20%
Mead Perseverance R1266	#Barbara of Plattemere 337	\$W	+61	45%
19162202 #Mead Miss Marathon L835	#Connealy Answer 71	\$F	+71	85%
ANGUS #*O C C Paxton 730P	#Mead Miss Marathon J630	\$G	+70	20%
Lesikar Blackcap Y838	+O C C Focus 813F	\$B	+141	50%
17175216 +Lesikar Blackcap U730	O C C Blackbird 736K	\$C	+258	35%
	#B C Marathon 7022	\$A,H	+82	65%
	HA Blackcap 1137	\$A,J	+35	75%

CED	BW	WW	YW	SC	MILK	RE	MARB
+4	+1.2	+61	+102	+83	+23	+45	+99
70%	50%	55%	70%	55%	75%	80%	20%

CED	BW	WW	YW	DMI	YH	SC	DOC	HP	CEM	MILK	MW	MH	CW	MARB	RE	FAT	TEND
73	56	42	43	57	59	48	42	14	83	68	55	47	47	10	57	16	67

31 LESIKAR CONSENSUS J770

Birth Date: 10-14-2021 Bull 20231934 Tattoo: J770

#*Connealy Consensus	#KMK Alliance 6595 I87	\$M	+74	25%
#*Connealy Consensus 7229	Blinda of Conanga 004	\$W	+62	40%
16447771 Blue Lilly of Conanga 16	#Woodhill Admiral 77K	\$F	+30	95%
ANGUS #*O C C Paxton 730P	Blue Cash of Conanga 6020	\$G	+49	55%
+Lesikar Blackcap C641C	+O C C Focus 813F	\$B	+79	95%
18515111 G A R Objective 1765	O C C Blackbird 736K	\$C	+176	95%
	#*S S Objective T510 OT26	\$A,H	+43	85%
	+G A R 1407 New Design 2453	\$A,J	-13	95%

CED	BW	WW	YW	SC	MILK	RE	MARB
+14	-3.4	+41	+64	+69	+27	+20	+66
4%	1%	95%	95%	65%	45%	95%	50%

CED	BW	WW	YW	DMI	YH	SC	DOC	HP	CEM	MILK	MW	MH	CW	MARB	RE	FAT	TEND
42	17	82	99	20	100	42	71	51	91	71	100	100	99	49	91	31	52

35 LESIKAR PERSEVERANCE J753

Birth Date: 09-20-2021 Bull *20231954 Tattoo: J753

#*Plattemere Weigh Up K360	#*Sitz Upward 307R	\$M	+67	40%
Mead Perseverance R1266	#Barbara of Plattemere 337	\$W	+69	25%
19162202 #Mead Miss Marathon L835	#Connealy Answer 71	\$F	+88	45%
ANGUS +Lesikar Surefire X126	#Mead Miss Marathon J630	\$G	+52	45%
Lesikar Erica D680	#*O C C Emblazon 854E	\$B	+141	50%
18514321 Lesikar Erica Z131	+Sedgwicks Barbara 087	\$C	+250	45%
	+Lesikar Emblazon W604	\$A,H	+106	50%
	Lesikar Erica X635	\$A,J	+69	60%

CED	BW	WW	YW	SC	MILK	RE	MARB
+8	-.2	+66	+112	-.09	+29	+78	+56
35%	20%	40%	50%	95%	35%	30%	60%

CED	BW	WW	YW	DMI	YH	SC	DOC	HP	CEM	MILK	MW	MH	CW	MARB	RE	FAT	TEND
68	65	19	31	40	31	94	2	47	96	33	22	35	11	55	13	26	81

32 LESIKAR PERSEVERANCE J780

Birth Date: 10-30-2021 Bull *20231866 Tattoo: J780

#*Plattemere Weigh Up K360	#*Sitz Upward 307R	\$M	+69	35%
Mead Perseverance R1266	#Barbara of Plattemere 337	\$W	+70	20%
19162202 #Mead Miss Marathon L835	#Connealy Answer 71	\$F	+89	40%
ANGUS #*Connealy Consensus 7229	#Mead Miss Marathon J630	\$G	+40	75%
Lesikar Lady G427	#*Connealy Consensus	\$B	+128	65%
19672543 Lesikar Lady A207	Blue Lilly of Conanga 16	\$C	+235	60%
	+Lesikar Emblazon W604	\$A,H	+125	35%
	P A R Miss Emulous Bando 041	\$A,J	+116	35%

CED	BW	WW	YW	SC	MILK	RE	MARB
+8	+1.6	+69	+117	+36	+27	+84	+36
35%	60%	35%	40%	85%	45%	25%	80%

CED	BW	WW	YW	DMI	YH	SC	DOC	HP	CEM	MILK	MW	MH	CW	MARB	RE	FAT	TEND
71	67	16	40	63	71	74	40	78	78	41	51	58	21	77	18	75	67

36 LESIKAR PERSEVERANCE J101

Birth Date: 12-22-2021 Bull *20401669 Tattoo: J101

#*Plattemere Weigh Up K360	#*Sitz Upward 307R	\$M	+61	60%
Mead Perseverance R1266	#Barbara of Plattemere 337	\$W	+56	60%
19162202 #Mead Miss Marathon L835	#Connealy Answer 71	\$F	+78	65%
ANGUS +Lesikar Practical A417	#Mead Miss Marathon J630	\$G	+44	65%
Lesikar Erica E301	O C C Practical 841P	\$B	+122	75%
18892009 Lesikar Erica Z359	+A Plus Blackcap 0037	\$C	+219	75%
	+Lesikar Rebound X931	\$A,H	+50	80%
	Lesikar Erica X941	\$A,J	+7	85%

CED	BW	WW	YW	SC	MILK	RE	MARB
+4	+2.5	+60	+103	+69	+25	+44	+51
70%	80%	60%	65%	65%	60%	80%	65%

CED	BW	WW	YW	DMI	YH	SC	DOC	HP	CEM	MILK	MW	MH	CW	MARB	RE	FAT	TEND
62	71	34	39	48	82	46	68	25	81	63	46	78	50	58	70	43	54

Lesikar Ranch Angus Bulls

37 LESIKAR PERSEVERANCE K122

Birth Date: 01-20-2022 Bull 20401672 Tattoo: K122



*Plattemere Weigh Up K360	*Sitz Upward 307R	\$M	+84	10%
Mead Perseverance R1266	#Barbara of Plattemere 337	\$W	+72	15%
19162202 #Mead Miss Marathon L835	#Connealy Answer 71	\$F	+72	80%
ANGUS 3S	#Mead Miss Marathon J630	\$G	+56	40%
#O C C Glory 950G	+O C C Exodus 712E	\$B	+128	65%
Lesikar Blackcap Y271	O C C Dixie Erica 971E	\$C	+250	45%
17175028 +Lesikar Blackcap W603	+#O C C Emblazon 854E	\$A,H	+101	50%
	+A Plus Blackcap 0037	\$A,J	+72	60%

CED	BW	WW	YW	SC	MILK	RE	MARB
+5	+2.5	+74	+125	-40	+27	+58	+73
65%	80%	20%	30%	95%	45%	60%	40%

CED	BW	WW	YW	DMI	YH	SC	DOC	HP	CEM	MILK	MW	MH	CW	MARB	RE	FAT	TEND
62	68	8	23	59	35	97	29	28	79	27	33	56	22	23	36	65	46

41 LESIKAR HOMETOWN K136

Birth Date: 03-06-2022 Bull +*20315029 Tattoo: K136



*G A R Ashland	*G A R Early Bird	\$M	+72	30%
*G A R Home Town	+*Chair Rock Ambush 1018	\$W	+68	25%
19266718 +*Chair Rock Sure Fire 6095	#*G A R Sure Fire	\$F	+120	3%
ANGUS 3S	+*Chair Rock Progress 3005	\$G	+102	2%
#*V A R Discovery 2240	#*A A R Ten X 7008 S A	\$B	+222	1%
+*Gabriel Total Discovery 548	+*Deer Valley Rita 0308	\$C	+360	1%
18388222 +*DZ Total 8T05	#TC Total 410	\$A,H	+214	2%
	+DZ New Design 1407-4007	\$A,J	+218	2%

CED	BW	WW	YW	SC	MILK	RE	MARB
+6	+3.2	+83	+145	+91	+23	+98	+1.49
55%	90%	10%	10%	50%	75%	10%	2%

CED	BW	WW	YW	DMI	YH	SC	DOC	HP	CEM	MILK	MW	MH	CW	MARB	RE	FAT	TEND
67	87	44	21	64	58	26	53	53	18	81	43	67	17	3	29	19	52

38 LESIKAR PERSEVERANCE K107 [M1F]

Birth Date: 01-03-2022 Bull 20499812 Tattoo: K107

*Plattemere Weigh Up K360	*Sitz Upward 307R	\$M	+60	60%
Mead Perseverance R1266	#Barbara of Plattemere 337	\$W	+61	45%
19162202 #Mead Miss Marathon L835	#Connealy Answer 71	\$F	+77	70%
ANGUS 3S	#Mead Miss Marathon J630	\$G	+47	60%
+Lesikar Eureka Z371	#*O C C Eureka 865E	\$B	+124	70%
Lesikar EvereldaEntense F494	+MJB Traveler Lady 398 87921	\$C	+221	75%
19183405 +Lesikar Everelda EntenseY260	#*O C C Missing Link 830M	\$A,H	+83	65%
	+Kahn Everelda Entense B050	\$A,J	+36	75%

CED	BW	WW	YW	SC	MILK	RE	MARB
+7	+1.0	+66	+114	+32	+25	+1.47	+1.57
45%	45%	40%	45%	85%	60%	75%	60%

CED	BW	WW	YW	DMI	YH	SC	DOC	HP	CEM	MILK	MW	MH	CW	MARB	RE	FAT	TEND
N/A	N/A	N/A	N/A	N/A	N/A	N/A	N/A	N/A	N/A	N/A	N/A	N/A	N/A	N/A	N/A	N/A	N/A

42 LESIKAR HOMETOWN K137

Birth Date: 03-07-2022 Bull +*20315030 Tattoo: K137



*G A R Ashland	*G A R Early Bird	\$M	+54	80%
*G A R Home Town	+*Chair Rock Ambush 1018	\$W	+67	30%
19266718 +*Chair Rock Sure Fire 6095	#*G A R Sure Fire	\$F	+106	15%
ANGUS 3S	+*Chair Rock Progress 3005	\$G	+102	2%
#*V A R Discovery 2240	#*A A R Ten X 7008 S A	\$B	+208	2%
+*Gabriel Total Discovery 548	+*Deer Valley Rita 0308	\$C	+324	3%
18388222 +*DZ Total 8T05	#TC Total 410	\$A,H	+210	3%
	+DZ New Design 1407-4007	\$A,J	+182	10%

CED	BW	WW	YW	SC	MILK	RE	MARB
+7	+2	+68	+123	+80	+30	+89	+1.50
45%	30%	35%	30%	55%	25%	20%	2%

CED	BW	WW	YW	DMI	YH	SC	DOC	HP	CEM	MILK	MW	MH	CW	MARB	RE	FAT	TEND
58	47	63	26	50	65	32	60	52	40	23	32	65	51	4	33	10	88

39 LESIKAR DUAL THREAT K834

Birth Date: 03-06-2022 Bull *20390837 Tattoo: K834

*G A R Sure Fire	#Connealy In Sure 8524	\$M	+72	30%
*G A R Dual Threat	+Chair Rock 5050 G A R 8086	\$W	+65	35%
19123898 +*G A R Daybreak A3010	#MCC Daybreak	\$F	+81	60%
ANGUS 3S	*G A R 5050 New Design A91	\$G	+51	50%
#+S A V Bismarck 5682	+*G A R Grid Maker	\$B	+132	60%
*Lesikar Blackcap G482	S A V Abigale 0451	\$C	+243	50%
19671591 Lesikar Blackcap D767	+*O C C Rancher 680R	\$A,H	+128	35%
	+Lesikar Blackcap Y902	\$A,J	+121	30%

CED	BW	WW	YW	SC	MILK	RE	MARB
+13	-.8	+52	+87	+75	+35	+86	+55
10%	15%	80%	90%	60%	10%	20%	60%

CED	BW	WW	YW	DMI	YH	SC	DOC	HP	CEM	MILK	MW	MH	CW	MARB	RE	FAT	TEND
32	24	93	95	7	90	48	18	23	89	23	93	86	80	69	4	33	93

43 LESIKAR HOMETOWN K138

Birth Date: 03-06-2022 Bull +*20315031 Tattoo: K138



*G A R Ashland	*G A R Early Bird	\$M	+74	25%
*G A R Home Town	+*Chair Rock Ambush 1018	\$W	+69	25%
19266718 +*Chair Rock Sure Fire 6095	#*G A R Sure Fire	\$F	+107	15%
ANGUS 3S	+*Chair Rock Progress 3005	\$G	+87	5%
#*V A R Discovery 2240	#*A A R Ten X 7008 S A	\$B	+193	5%
+*Gabriel Total Discovery 548	+*Deer Valley Rita 0308	\$C	+324	3%
18388222 +*DZ Total 8T05	#TC Total 410	\$A,H	+190	5%
	+DZ New Design 1407-4007	\$A,J	+165	15%

CED	BW	WW	YW	SC	MILK	RE	MARB
+4	+1.4	+68	+121	+49	+29	+82	+1.22
70%	55%	35%	35%	75%	35%	25%	10%

CED	BW	WW	YW	DMI	YH	SC	DOC	HP	CEM	MILK	MW	MH	CW	MARB	RE	FAT	TEND
57	49	77	62	34	92	67	17	44	23	42	87	81	62	6	56	18	90

40 LESIKAR DUAL THREAT K838

Birth Date: 03-10-2022 Bull *20390840 Tattoo: K838

*G A R Sure Fire	#Connealy In Sure 8524	\$M	+73	25%
*G A R Dual Threat	+Chair Rock 5050 G A R 8086	\$W	+66	30%
19123898 +*G A R Daybreak A3010	#MCC Daybreak	\$F	+82	55%
ANGUS 3S	*G A R 5050 New Design A91	\$G	+36	80%
#+S A V Final Answer 0035	#Sitz Traveler 8180	\$B	+119	80%
*Lesikar Erica G452	S A V Emulous 8145	\$C	+227	70%
19671579 Lesikar Erica D771	+*O C C Paxton 730P	\$A,H	+92	60%
	Lesikar Erica B385	\$A,J	+72	60%

CED	BW	WW	YW	SC	MILK	RE	MARB
+13	-1.6	+57	+106	+1.34	+33	+37	+51
10%	10%	70%	60%	25%	15%	90%	65%

CED	BW	WW	YW	DMI	YH	SC	DOC	HP	CEM	MILK	MW	MH	CW	MARB	RE	FAT	TEND
14	10	60	39	49	43	16	26	9	68	16	67	71	69	56	74	100	39

44 LESIKAR GROWTH FUND K142

Birth Date: 03-14-2022 Bull *20390941 Tattoo: K142

+*Basin Payweight 1682	#+Basin Payweight 006S	\$M	+66	45%
+*Deer Valley Growth Fund	21AR O Lass 7017	\$W	+75	10%
18827828 +*Deer Valley Rita 36113	#Plattemere Weigh Up K360	\$F	+86	50%
ANGUS 3S	+Deer Valley Rita 9457	\$G	+20	95%
+Lesikar Emblazon X947	+#O C C Emblazon 854E	\$B	+106	90%
Lesikar Blackcap D248	+Sedgwicks Barbara 087	\$C	+203	90%
18891941 +Lesikar Blackcap W605	+#O C C Emblazon 854E	\$A,H	+78	65%
	+A Plus Blackcap 0037	\$A,J	+49	70%

CED	BW	WW	YW	SC	MILK	RE	MARB
+11	-.7	+65	+106	-.03	+32	+46	+1.18
15%	15%	45%	60%	95%	15%	80%	95%

CED	BW	WW	YW	DMI	YH	SC	DOC	HP	CEM	MILK	MW	MH	CW	MARB	RE	FAT	TEND
11	16	36	81	51	83	94	56	58	27	46	72	85	44	89	72	100	16

Lesikar Ranch Angus Bulls



Lesikar Peyton J997 - Lot 45

48 LESIKAR PEYTON K123

Birth Date: 01-22-2022 Bull *20497855 Tattoo: K123

+*Quaker Hill Manning 4EX9 #*EXAR Denver 2002B

*E W A Peyton 642 #*Quaker Hill Blackcap 0A32

18675107 #+*E W A 444 of 968 Progress #+*G A R Progress

ANGUS3S #+*WR Journey-1X74 +Edgewood Lady 968

#+*Elm Creek Rita 7J10 *B/R Future Direction 4268

19059190 #+*Elm Creek Rita 4Q16 *Rito 9Q13 of Rita 5F56 GHM

#+*DZ Ingenuity 2N16

\$M	+55	75%
\$W	+80	5%
\$F	+120	3%
\$G	+96	3%
\$B	+216	2%
\$C	+335	2%
\$A,H	+223	2%
\$A,J	+231	1%

CED	BW	WW	YW	SC	MILK	RE	MARB
+8	+2.3	+82	+142	+4.1	+35	+1.10	+1.39
35%	75%	10%	10%	80%	10%	4%	4%

CED	BW	WW	YW	DMI	YH	SC	DOC	HP	CEM	MILK	MW	MH	CW	MARB	RE	FAT	TEND
38	63	45	32	18	57	70	81	69	28	8	28	35	20	3	8	78	96

49 LESIKAR PEYTON K106

Birth Date: 01-05-2022 Bull *20497845 Tattoo: K106

+*Quaker Hill Manning 4EX9 #*EXAR Denver 2002B

*E W A Peyton 642 #*Quaker Hill Blackcap 0A32

18675107 #+*E W A 444 of 968 Progress #+*G A R Progress

ANGUS3S #+*Byergo Black Magic 3348 *Silveiras Conversion 8064

#+*ECC Magic Rita 0B1 *Byergo Elia Cupcake 5900

19626988 #+*DZ Fut Dir 4268 2D08 *B/R Future Direction 4268

#+*DZ Total 8T05

\$M	+80	15%
\$W	+69	25%
\$F	+113	10%
\$G	+67	20%
\$B	+179	10%
\$C	+312	5%
\$A,H	+134	30%
\$A,J	+123	30%

CED	BW	WW	YW	SC	MILK	RE	MARB
+8	+2.3	+77	+133	+1.4	+24	+8.8	+8.2
35%	75%	15%	20%	90%	70%	20%	35%

CED	BW	WW	YW	DMI	YH	SC	DOC	HP	CEM	MILK	MW	MH	CW	MARB	RE	FAT	TEND
20	43	55	33	21	35	89	6	6	45	75	50	58	52	28	30	14	82

50 LESIKAR PEYTON K115

Birth Date: 01-10-2022 Bull 20390823 Tattoo: K115

+*Quaker Hill Manning 4EX9 #*EXAR Denver 2002B

*E W A Peyton 642 #*Quaker Hill Blackcap 0A32

18675107 #+*E W A 444 of 968 Progress #+*G A R Progress

ANGUS3S #+*Edgewood Lady 968 +Edgewood Lady 968

#+*O C C Emblazon 854E #D H D Traveler 6807

+Lesikar Barbara X937 Dixie Erica of C H 1019

16587374 +Sedgwicks Barbara 087 #+*O C C Backstop 888B

Sedgwicks Barbara 4171

\$M	+59	65%
\$W	+72	15%
\$F	+119	4%
\$G	+42	70%
\$B	+161	25%
\$C	+268	30%
\$A,H	+120	40%
\$A,J	+106	40%

CED	BW	WW	YW	SC	MILK	RE	MARB
+8	+2.1	+75	+128	-.20	+29	+7.4	+4.0
35%	70%	20%	25%	95%	35%	35%	80%

CED	BW	WW	YW	DMI	YH	SC	DOC	HP	CEM	MILK	MW	MH	CW	MARB	RE	FAT	TEND
47	71	20	27	27	17	97	78	48	90	25	29	25	9	68	34	31	23

51 LESIKAR PEYTON K841

Birth Date: 03-20-2022 Bull 20390820 Tattoo: K841

+*Quaker Hill Manning 4EX9 #*EXAR Denver 2002B

*E W A Peyton 642 #*Quaker Hill Blackcap 0A32

18675107 #+*E W A 444 of 968 Progress #+*G A R Progress

ANGUS3S #+*Edgewood Lady 968 +Edgewood Lady 968

#O C C Jet Stream 825J #+*O C C Emblazon 854E

Lesikar Pride Y929 O C C Juanada 968G

17175075 LAR Pride P270 #Scotch Cap

M A 6127 of 9352 Ext

\$M	+67	40%
\$W	+62	40%
\$F	+102	20%
\$G	+71	15%
\$B	+173	15%
\$C	+291	15%
\$A,H	+110	45%
\$A,J	+63	65%

CED	BW	WW	YW	SC	MILK	RE	MARB
+10	+1.2	+64	+113	+4.7	+25	+4.5	+1.13
20%	50%	45%	50%	80%	60%	80%	15%

CED	BW	WW	YW	DMI	YH	SC	DOC	HP	CEM	MILK	MW	MH	CW	MARB	RE	FAT	TEND
40	67	51	30	44	72	57	53	28	73	67	54	53	30	7	75	86	74

45 LESIKAR PEYTON J997

Birth Date: 12-15-2021 Bull *20497853 Tattoo: J997

+*Quaker Hill Manning 4EX9 #*EXAR Denver 2002B

*E W A Peyton 642 #*Quaker Hill Blackcap 0A32

18675107 #+*E W A 444 of 968 Progress #+*G A R Progress

ANGUS3S #+*MCC Daybreak +Edgewood Lady 968

#+*Quaker Hill Rampage 0A36 #MCC Daybreak

*Springfield Rita 8010 #*QHF Blackcap 6E2 of 4V16 4355

19166183 *Springfield Rita 5190 #*V A R Generation 2100

#+*Springfield Rita 1230 ET

\$M	+59	65%
\$W	+67	30%
\$F	+123	3%
\$G	+75	15%
\$B	+197	4%
\$C	+315	5%
\$A,H	+119	40%
\$A,J	+116	35%

CED	BW	WW	YW	SC	MILK	RE	MARB
+8	+2.1	+81	+145	+6.1	+24	+5.7	+1.11
35%	70%	10%	10%	70%	70%	65%	15%

CED	BW	WW	YW	DMI	YH	SC	DOC	HP	CEM	MILK	MW	MH	CW	MARB	RE	FAT	TEND
38	46	54	37	28	34	71	34	1	66	69	39	45	44	11	88	76	67

46 LESIKAR PEYTON J994

Birth Date: 12-06-2021 Bull *20227630 Tattoo: J994

+*Quaker Hill Manning 4EX9 #*EXAR Denver 2002B

*E W A Peyton 642 #*Quaker Hill Blackcap 0A32

18675107 #+*E W A 444 of 968 Progress #+*G A R Progress

ANGUS3S #+*Edgewood Lady 968 +Edgewood Lady 968

#*Jindra Acclaim #*Jindra 3rd Dimension

*Gabriel Rita 8441 #*Jindra Blackbird Lassy 1111

19281726 #+*Gabriel Total Discovery 548 #*V A R Discovery 2240

#+*DZ Total 8T05

\$M	+55	75%
\$W	+79	5%
\$F	+120	3%
\$G	+68	20%
\$B	+188	10%
\$C	+299	10%
\$A,H	+138	25%
\$A,J	+119	30%

CED	BW	WW	YW	SC	MILK	RE	MARB
+10	+1.2	+86	+152	+6.4	+32	+6.6	+9.6
20%	50%	4%	4%	70%	15%	50%	20%

CED	BW	WW	YW	DMI	YH	SC	DOC	HP	CEM	MILK	MW	MH	CW	MARB	RE	FAT	TEND
10	16	28	23	34	55	56	20	15	61	27	19	37	39	15	66	72	52

47 LESIKAR PEYTON J985

Birth Date: 10-26-2021 Bull #+20227592 Tattoo: J985

+*Quaker Hill Manning 4EX9 #*EXAR Denver 2002B

*E W A Peyton 642 #*Quaker Hill Blackcap 0A32

18675107 #+*E W A 444 of 968 Progress #+*G A R Progress

ANGUS3S #+*Edgewood Lady 968 +Edgewood Lady 968

#+*FF Rito Righteous 6R41 #+*Quaker Hill Rampage 0A36

*Gabriel 3522M Eva 8410 #+*FF Rita 3R30 of 9Q23 5M2

19179735 #+*SJH Waylon of 7010 3522M #*Baldrige Waylon W34

Maplecrest Eva 7010

\$M	+58	70%
\$W	+85	2%
\$F	+113	10%
\$G	+76	15%
\$B	+189	10%
\$C	+303	10%
\$A,H	+191	5%
\$A,J	+200	3%

CED	BW	WW	YW	SC	MILK	RE	MARB
+9	+2.6	+89	+156	+4.9	+34	+1.08	+9.4
30%	80%	3%	3%	75%	10%	5%	25%

CED	BW	WW	YW	DMI	YH	SC	DOC	HP	CEM	MILK	MW	MH	CW	MARB	RE	FAT	TEND
31	48	8	17	67	31	45	75	50	26	16	32	35	19	30	17	17	98

Lesikar Ranch Angus Females



Lesikar Blackcap J890 - Lot 52

53 LESIKAR BARBARA J888

Birth Date: 02-04-2021 Cow 20082955 Tattoo: J888

*Tehama Upward Y238 #*Sitz Upward 307R

#**Tehama Tahoe B767 +Tehama Elite Blackbird T735

17817177 *Tehama Mary Blackbird Y684 #*S A V Final Answer 0035

Tehama Mary Blackbird T073

#+O C C Emblazon 854E #D H D Traveler 6807

+Lesikar Barbara X934 Dixie Erica of C H 1019

16663819 +Sedgwicks Barbara 087 #+O C C Backstop 888B

Sedgwicks Barbara 4171

\$M	+69	25%
\$W	+66	20%
\$F	+79	60%
\$G	+46	45%
\$B	+125	55%
\$C	+231	45%
\$A,H	+101	30%
\$A,J	+69	40%

CED	BW	WW	YW	SC	MILK	RE	MARB
+5	+1.0	+61	+100	+74	+26	+64	+50
55%	45%	40%	50%	55%	55%	35%	55%

CED	BW	WW	YW	DMI	YH	SC	DOC	HP	CEM	MILK	MW	MH	CW	MARB	RE	FAT	TEND
N/A	N/A	N/A	N/A	N/A	N/A	N/A	N/A	N/A	N/A	N/A	N/A	N/A	N/A	N/A	N/A	N/A	N/A

• Will sell with a calf at side (Lot 53A) by CONNEALY COMMERCE.

52 LESIKAR BLACKCAP J890

Birth Date: 02-07-2021 Cow 20082957 Tattoo: J890

*Tehama Upward Y238 #*Sitz Upward 307R

#**Tehama Tahoe B767 +Tehama Elite Blackbird T735

17817177 *Tehama Mary Blackbird Y684 #*S A V Final Answer 0035

Tehama Mary Blackbird T073

#BR Midland #**Twin Valley Precision E161

+Lesikar Blackcap U812 BR Royal Lass 7036-19

16286733 HA Blackcap 1137 #Bon View New Design 208

+A Plus Blackcap 0140

\$M	+70	35%
\$W	+69	20%
\$F	+69	85%
\$G	+60	30%
\$B	+128	65%
\$C	+236	60%
\$A,H	+89	60%
\$A,J	+42	75%

CED	BW	WW	YW	SC	MILK	RE	MARB
+11	-.3	+64	+117	+1.18	+32	+35	+87
15%	20%	45%	40%	30%	15%	90%	30%

CED	BW	WW	YW	DMI	YH	SC	DOC	HP	CEM	MILK	MW	MH	CW	MARB	RE	FAT	TEND
14	38	39	21	75	78	29	19	14	84	40	53	82	74	20	81	67	57

• Bred to calve December 20, 2023, to CONNEALY COMMERCE. Examined safe.

54 LESIKAR EVERGREEN H862

Birth Date: 11-30-2020 Cow 20082945 Tattoo: H862

*Tehama Upward Y238 #*Sitz Upward 307R

#**Tehama Tahoe B767 +Tehama Elite Blackbird T735

17817177 *Tehama Mary Blackbird Y684 #*S A V Final Answer 0035

Tehama Mary Blackbird T073

+O C C Echelon 857E #D H D Traveler 6807

Lesikar Evergreen Z299 Dixie Erica of C H 1019

17289354 Lesikar Evergreen X920 #*Mytty In Focus

#+TF Evergreen 7445

\$M	+70	25%
\$W	+65	20%
\$F	+79	60%
\$G	+50	35%
\$B	+129	50%
\$C	+237	40%
\$A,H	+101	30%
\$A,J	+58	45%

CED	BW	WW	YW	SC	MILK	RE	MARB
+11	+2	+61	+105	+84	+26	+50	+65
15%	25%	40%	40%	45%	55%	55%	35%

CED	BW	WW	YW	DMI	YH	SC	DOC	HP	CEM	MILK	MW	MH	CW	MARB	RE	FAT	TEND
N/A	N/A	N/A	N/A	N/A	N/A	N/A	N/A	N/A	N/A	N/A	N/A	N/A	N/A	N/A	N/A	N/A	N/A

• Sells with a bull calf at side (Lot 54A) calved September 5, 2023, by CONNEALY COMMERCE. Tattoo L360.

55 LESIKAR ERICA H859

Birth Date: 12-04-2020 Cow 20082942 Tattoo: H859

*Tehama Upward Y238 #*Sitz Upward 307R

#**Tehama Tahoe B767 +Tehama Elite Blackbird T735

17817177 *Tehama Mary Blackbird Y684 #*S A V Final Answer 0035

Tehama Mary Blackbird T073

+Lesikar Practical A417 O C C Practical 841P

Lesikar Erica E301 +A Plus Blackcap 0037

18892009 Lesikar Erica Z359 +Lesikar Rebound X931

Lesikar Erica X941

\$M	+64	40%
\$W	+57	45%
\$F	+69	80%
\$G	+59	20%
\$B	+128	50%
\$C	+230	45%
\$A,H	+100	30%
\$A,J	+52	50%

CED	BW	WW	YW	SC	MILK	RE	MARB
+8	+1.5	+58	+97	+77	+22	+41	+80
30%	55%	45%	55%	50%	80%	70%	20%

CED	BW	WW	YW	DMI	YH	SC	DOC	HP	CEM	MILK	MW	MH	CW	MARB	RE	FAT	TEND
N/A	N/A	N/A	N/A	N/A	N/A	N/A	N/A	N/A	N/A	N/A	N/A	N/A	N/A	N/A	N/A	N/A	N/A

• Sells with a bull calf at side (Lot 55A) calved September 4, 2023, by GAR DUAL THREAT. Tattoo L358.

Please visit us at:

The Lesikar Ranch Channel

type Lesikar Ranch in the search bar

Lesikar Ranch Angus Females



Britta of Conanga 157E - Grandam of Lot 56.

56 LESIKAR BRITTA MAY H728

Birth Date: 01-06-2020 Cow *19671699 Tattoo: H728

**Connealy Capitalist 028	**S A V Final Answer 0035	\$M	+68	40%
#**LD Capitalist 316	Prides Pita of Conanga 8821	\$W	+72	15%
17666102 LD Dixie Erica 2053	#C A Future Direction 5321	\$F	+89	40%
	LD Dixie Erica Oar 0853	\$G	+30	90%
	+Rito 707 of Ideal 3407 7075	\$B	+120	80%
ANGUS 35	*S A V Blackcap May 4136	\$C	+224	70%
#**McKellar Britta May 8052	**Connealy Consensus	\$A,H	+108	45%
19155249 Britta of Conanga 157E	#+Britt of Conanga 1251 877N	\$A,J	+112	35%

CED	BW	WW	YW	SC	MILK	RE	MARB
+6	+6	+75	+122	+67	+22	+86	+17
55%	35%	15%	30%	65%	80%	25%	95%

CED	BW	WW	YW	DMI	YH	SC	DOC	HP	CEM	MILK	MW	MH	CW	MARB	RE	FAT	TEND
47	37	13	58	64	48	49	43	49	88	60	39	49	31	87	11	58	61

• Will sell with a calf at side (Lot 56A) by GAR DUAL THREAT.

57 LESIKAR PRIMROSE H830

Birth Date: 09-17-2020 Cow 20083617 Tattoo: H830

**Connealy Capitalist 028	**S A V Final Answer 0035	\$M	+44	95%
#**LD Capitalist 316	Prides Pita of Conanga 8821	\$W	+50	75%
17666102 LD Dixie Erica 2053	#C A Future Direction 5321	\$F	+98	25%
	LD Dixie Erica Oar 0853	\$G	+56	40%
	#Summitcrest High Prime 0H29	\$B	+154	30%
#TF Primrose 8303	#Gardens Prime Time	\$C	+244	50%
16046400 LaGrand Primrose 2231	Summitcrest Missie 2F55	\$A,H	+143	25%
	**Twin Valley Precision E161	\$A,J	+130	25%
	+B A R Roth Primrose 096 CV			

CED	BW	WW	YW	SC	MILK	RE	MARB
+10	-.2	+52	+94	+33	+24	+82	+67
20%	20%	80%	80%	85%	70%	30%	50%

CED	BW	WW	YW	DMI	YH	SC	DOC	HP	CEM	MILK	MW	MH	CW	MARB	RE	FAT	TEND
N/A	N/A	N/A	N/A	N/A	N/A	N/A	N/A	N/A	N/A	N/A	N/A	N/A	N/A	N/A	N/A	N/A	N/A

Bred to calve February 1, 2024, to CONNEALY COMMERCE. Examined Safe.

58 LESIKAR BLACKCAP H552

Birth Date: 08-06-2020 Cow 20082895 Tattoo: H552

#Sitz Traveler 8180	#G D A R Traveler 71	\$M	+59	65%
#**S A V Final Answer 0035	Sitz Everelda Entense 1137	\$W	+41	95%
13592905 SA V Emulous 8145	#Bon View Bando 598	\$F	+55	95%
	S A V Sky Emulous 2124	\$G	+44	65%
	#*O C C Paxton 730P	\$B	+99	95%
Lesikar Paxton Y835	+L A R Barbara R360	\$C	+187	95%
Lesikar Blackcap C504	+#B C Lookout 7024	\$A,H	+74	70%
18110782 +Lesikar Blackcap Y875	+A Plus Blackcap 0037	\$A,J	+31	80%

CED	BW	WW	YW	SC	MILK	RE	MARB
+12	-.5	+44	+77	+1.00	+19	+28	+58
10%	15%	95%	95%	45%	95%	95%	60%

CED	BW	WW	YW	DMI	YH	SC	DOC	HP	CEM	MILK	MW	MH	CW	MARB	RE	FAT	TEND
N/A	N/A	N/A	N/A	N/A	N/A	N/A	N/A	N/A	N/A	N/A	N/A	N/A	N/A	N/A	N/A	N/A	N/A

Bred to calve January 6, 2024, to CONNEALY COMMERCE. Examined Safe.

59 LESIKAR BLACKCAP J712

Birth Date: 08-10-2021 Cow 20232010 Tattoo: J712

#*Connealy Confidence Plus	#*Connealy Confidence 0100	\$M	+73	25%
*Connealy Emerald	Elbanna of Conanga 1209	\$W	+74	10%
19257149 Jace of Conanga 6571	#*Connealy Armory	\$F	+82	55%
	+Jazzy of Conanga 4660 860C	\$G	+69	20%
ANGUS 35	#Jauer 353 Traveler 589 27	\$B	+151	35%
+Lesikar Blackcap Y824	Jauer 7111 Traveler 353 719	\$C	+269	25%
16873722 +A Plus Blackcap 0037	Jauer 6807 Traveler 27 085	\$A,H	+139	25%
	#*N Bar Emulation EXT	\$A,J	+128	25%
	#G A R Scotch Cap 867			

CED	BW	WW	YW	SC	MILK	RE	MARB
+2	+3.1	+76	+132	+77	+32	+94	+85
85%	90%	15%	20%	60%	15%	15%	35%

CED	BW	WW	YW	DMI	YH	SC	DOC	HP	CEM	MILK	MW	MH	CW	MARB	RE	FAT	TEND
50	66	5	21	88	40	59	64	45	51	17	31	34	25	32	8	21	64

Bred to calve November 24, 2023, to CONNEALY COMMERCE. Examined Safe.

60 LESIKAR BLACKCAP J729

Birth Date: 08-16-2021 Cow *20231978 Tattoo: J729

#*Connealy Confidence Plus	#*Connealy Confidence 0100	\$M	+65	45%
*Connealy Emerald	Elbanna of Conanga 1209	\$W	+60	45%
19257149 Jace of Conanga 6571	#*Connealy Armory	\$F	+59	95%
	+Jazzy of Conanga 4660 860C	\$G	+57	35%
ANGUS 35	+Lesikar Emblazon W604	\$B	+117	80%
Lesikar Blackcap G368	+A Plus Blackcap 0037	\$C	+217	80%
19512616 #+Lesikar Blackcap X673	#TC Total 410	\$A,H	+106	50%
	G A R Objective 1765	\$A,J	+88	50%

CED	BW	WW	YW	SC	MILK	RE	MARB
+5	+4	+55	+100	+11	+32	+82	+63
60%	30%	75%	70%	90%	15%	30%	55%

CED	BW	WW	YW	DMI	YH	SC	DOC	HP	CEM	MILK	MW	MH	CW	MARB	RE	FAT	TEND
56	32	79	54	20	84	93	28	32	74	48	55	80	91	49	28	20	51

Bred to calve December 20, 2023, to CONNEALY COMMERCE. Examined Safe.

61 LESIKAR BLACKCAP J740

Birth Date: 08-31-2021 Cow *20231994 Tattoo: J740

#*Connealy Confidence Plus	#*Connealy Confidence 0100	\$M	+72	30%
*Connealy Emerald	Elbanna of Conanga 1209	\$W	+67	25%
19257149 Jace of Conanga 6571	#*Connealy Armory	\$F	+76	70%
	+Jazzy of Conanga 4660 860C	\$G	+63	25%
ANGUS 35	Lesikar Paxton Y835	\$B	+139	50%
Lesikar Blackcap D688	#*O C C Paxton 730P	\$C	+252	40%
18514329 Lesikar Blackcap Z124	+L A R Barbara R360	\$A,H	+116	40%
	#Bon View New Design 1407	\$A,J	+116	35%
	Z J H 125P			

CED	BW	WW	YW	SC	MILK	RE	MARB
+9	+8	+61	+114	+1.21	+32	+72	+82
30%	40%	55%	45%	30%	15%	40%	35%

CED	BW	WW	YW	DMI	YH	SC	DOC	HP	CEM	MILK	MW	MH	CW	MARB	RE	FAT	TEND
38	36	63	47	71	36	29	82	43	26	51	83	68	72	34	22	46	24

Bred to calve November 24, 2023, to E&B WILDCAT 9402. Examined Safe.

62 LESIKAR JUANA J754

Birth Date: 09-20-2021 Cow *20231967 Tattoo: J754

#Plattemere Weigh Up K360	#*Sitz Upward 307R	\$M	+79	15%
Mead Perseverance R1266	#Barbara of Plattemere 337	\$W	+65	30%
19162202 #Mead Miss Marathon L835	#Connealy Answer 71	\$F	+72	80%
	#Mead Miss Marathon J630	\$G	+52	45%
ANGUS 35	+Lesikar Emblazon W604	\$B	+124	75%
Lesikar Juana C493	#*O C C Emblazon 854E	\$C	+240	55%
18110774 LAR Juana R290	+A Plus Blackcap 0037	\$A,H	+20	90%
	L A R Bando 1002	\$A,J	-13	95%
	LAR Juana L22			

CED	BW	WW	YW	SC	MILK	RE	MARB
+4	+2.9	+60	+93	+4.0	+29	+4.0	+71
70%	85%	60%	80%	80%	30%	85%	45%

CED	BW	WW	YW	DMI	YH	SC	DOC	HP	CEM	MILK	MW	MH	CW	MARB	RE	FAT	TEND
92	95	24	73	30	38	83	18	45	73	32	80	46	48	38	33	61	46

Bred to calve December 16, 2023, to E&B WILDCAT 9402. Examined Safe.

Lesikar Ranch Angus Females

63 LESIKAR BLACKCAP H571 [DDP]



Birth Date: 08-19-2020 Cow 20083405 Tattoo: H571

#*Connealy Consensus	#KMK Alliance 6595 I87	\$M	+72	30%
#*Connealy Consensus 7229	Blinda of Conanga 004	\$W	+42	90%
16447771 Blue Lilly of Conanga 16	#Woodhill Admiral 77K	\$F	+81	60%
	Blue Cash of Conanga 6020	\$G	+61	30%
#Connealy Thunder	#Baldridge Kaboom K243 KCF	\$B	+142	45%
Lesikar Blackcap Y807	#Parka of Conanga 241	\$C	+256	40%
16871850 R B Blackcap 738	#*G A R Predestined	\$A.H	+111	45%
	+Twin Eagles Blackcap 418P	\$A.J	+73	55%

CED	BW	WW	YW	SC	MILK	RE	MARB
+2	+2.6	+48	+89	+1.72	+25	+1.60	+1.80
85%	80%	90%	85%	60%	60%	60%	40%

CED	BW	WW	YW	DMI	YH	SC	DOC	HP	CEM	MILK	MW	MH	CW	MARB	RE	FAT	TEND
N/A	N/A	N/A	N/A	N/A	N/A	N/A	N/A	N/A	N/A	N/A	N/A	N/A	N/A	N/A	N/A	N/A	N/A

Bred to calve December 10, 2023, to E&B WILDCAT 9402. Examined Safe.

64 LESIKAR DIXIE ERICA J662

Birth Date: 02-16-2021 Cow 20083403 Tattoo: J662

#*Connealy Consensus	#KMK Alliance 6595 I87	\$M	+72	20%
#*Connealy Consensus 7229	Blinda of Conanga 004	\$W	+61	30%
16447771 Blue Lilly of Conanga 16	#Woodhill Admiral 77K	\$F	+58	95%
	Blue Cash of Conanga 6020	\$G	+47	40%
+Lesikar Legacy W607	#*O C C Emblazon 854E	\$B	+105	85%
Lesikar Dixie Erica B599	+A Plus Blackcap 0037	\$C	+208	70%
18110756 Lesikar Dixie Erica Z290	#B C C Bushwacker 41-93	\$A.H	+52	65%
	L A R Dixie Erica P194	\$A.J	+0	75%

CED	BW	WW	YW	SC	MILK	RE	MARB
+7	+1	+51	+83	+1.50	+27	+1.34	+1.64
40%	25%	70%	80%	70%	45%	80%	35%

CED	BW	WW	YW	DMI	YH	SC	DOC	HP	CEM	MILK	MW	MH	CW	MARB	RE	FAT	TEND
N/A	N/A	N/A	N/A	N/A	N/A	N/A	N/A	N/A	N/A	N/A	N/A	N/A	N/A	N/A	N/A	N/A	N/A

Sells with a bull calf at side (Lot 64A) calved August 15, 2023, by DEER VALLEY GROWTH FUND. Tattoo L985.

65 LESIKAR ESTER J900

Birth Date: 03-01-2021 Cow *20082924 Tattoo: J900

#*Connealy Impression	#Connealy Reflection	\$M	+71	20%
#*MAR Innovation 251	Pearl Pammy of Conanga 194	\$W	+49	70%
16983331 #*MAR Final Kahuna 856	#*S A V Final Answer 0035	\$F	+37	95%
	#MAR Kahuna Precision 328 674	\$G	+38	65%
ANGUS 3S	#*O C C Eureka 865E	\$B	+75	95%
+Lesikar Eureka Z371	+MJB Traveler Lady 398 87921	\$C	+168	95%
Lesikar Ester E314	#C A Future Direction 5321	\$A.H	+46	65%
18892021 +Lesikar Ester U738	+Thomas Ester 0660	\$A.J	+22	65%

CED	BW	WW	YW	SC	MILK	RE	MARB
+6	+5	+40	+58	+1.74	+22	+1.28	+1.42
50%	30%	90%	95%	55%	80%	85%	65%

CED	BW	WW	YW	DMI	YH	SC	DOC	HP	CEM	MILK	MW	MH	CW	MARB	RE	FAT	TEND
25	20	96	100	1	95	67	97	73	35	68	100	100	100	73	95	54	67

Sells with a heifer calf at side (Lot 65A) calved September 10, 2023, by CONNEALY COMMERCE. Tattoo L366.

66 LESIKAR CORENE H814

Birth Date: 04-29-2020 Cow 19830007 Tattoo: H814

#*O C C Emblazon 854E	#D H D Traveler 6807	\$M	+35	95%
+Lesikar Emblazon X947	Dixie Erica of C H 1019	\$W	+32	95%
16663825 +Sedgwicks Barbara 087	#*O C C Backstop 888B	\$F	+66	85%
	Sedgwicks Barbara 4171	\$G	+40	60%
ANGUS 3S	#S S Traveler 6807 T510	\$B	+106	80%
#*S S Objective T510 0T26	S S Miss Rita R011 7R8	\$C	+172	95%
Lesikar Corene W854	#Rito 616 of 4B20 6807	\$A.H	+75	50%
16658732 LAR Corene M82	+Twin Eagles Miss 625K	\$A.J	+37	55%

CED	BW	WW	YW	SC	MILK	RE	MARB
+12	+1	+39	+76	-.24	+21	+1.37	+1.50
10%	25%	95%	85%	95%	85%	75%	55%

CED	BW	WW	YW	DMI	YH	SC	DOC	HP	CEM	MILK	MW	MH	CW	MARB	RE	FAT	TEND
30	38	100	90	2	98	96	78	61	72	94	76	87	100	63	78	45	97

Sells with a bull calf at side (Lot 66A) calved August 14, 2023, by G A R DUAL THREAT. Tattoo L341.

67 LESIKAR RITA H770

Birth Date: 03-24-2020 Cow 19829967 Tattoo: H770

#O C C Anchor 771A	#D H D Traveler 6807	\$M	+32	95%
+Lesikar Anchor A429	O C C Juanada 709V	\$W	+34	95%
17573955 +A Plus Blackcap 0037	#*N Bar Emulation EXT	\$F	+57	95%
ANGUS 3S	#G A R Scotch Cap 867	\$G	+38	75%
#*O C C Paxton 730P	+O C C Focus 813F	\$B	+94	95%
+*Lesikar Rita C730	O C C Blackbird 736K	\$C	+154	95%
18514272 EF Rita 8475	#*B C Lookout 7024	\$A.H	-7	95%
	+G A R 6148 Emulation 829	\$A.J	-50	95%

CED	BW	WW	YW	SC	MILK	RE	MARB
+7	+1.8	+46	+75	-.72	+11	+1.25	+1.46
45%	65%	90%	90%	95%	95%	95%	75%

CED	BW	WW	YW	DMI	YH	SC	DOC	HP	CEM	MILK	MW	MH	CW	MARB	RE	FAT	TEND
43	67	72	86	15	64	94	94	95	83	99	73	67	94	66	79	39	7

Will sell with a calf at side (Lot 67A) by CONNEALY COMMERCE.

68 LESIKAR LASS H781

Birth Date: 04-07-2020 Cow 19829976 Tattoo: H781

+O C C Broadside 876B	#D H D Traveler 6807	\$M	+81	10%
+Lesikar Broadside B545	Revolution Rose of R R 9239	\$W	+51	70%
17820903 EF Rita 8475	#*B C Lookout 7024	\$F	+56	95%
ANGUS 3S	+G A R 6148 Emulation 829	\$G	+40	75%
+Lesikar Legacy W607	#*O C C Emblazon 854E	\$B	+96	95%
Lesikar Lass B603	+A Plus Blackcap 0037	\$C	+206	85%
18110760 Lesikar Lass W909	#G A R Retail Product	\$A.H	+40	85%
	Ma 8039 of 334 Ambush	\$A.J	-10	90%

CED	BW	WW	YW	SC	MILK	RE	MARB
+6	-1.2	+41	+66	-.15	+25	+1.31	+1.51
55%	10%	95%	95%	95%	60%	95%	70%

CED	BW	WW	YW	DMI	YH	SC	DOC	HP	CEM	MILK	MW	MH	CW	MARB	RE	FAT	TEND
49	18	77	92	41	90	85	31	22	46	45	88	88	86	50	78	62	55

Bred to calve January 5, 2024, to AF MAGNUM AI 8084. Examined Safe.

69 LESIKAR PRIMROSE H771

Birth Date: 03-25-2020 Cow 19835349 Tattoo: H771

+O C C Broadside 876B	#D H D Traveler 6807	\$M	+57	60%
+Lesikar Broadside B545	Revolution Rose of R R 9239	\$W	+38	90%
17820903 EF Rita 8475	#*B C Lookout 7024	\$F	+33	95%
ANGUS 3S	+G A R 6148 Emulation 829	\$G	+32	75%
#*O C C Eureka 865E	#*O C C Backstop 888B	\$B	+65	95%
+Lesikar Primrose Z318	#Blackbird of R R 1204	\$C	+141	95%
17289355 +TF Roth Primrose 8646	#*Twin Valley Precision E161	\$A.H	-11	90%
	+B A A R Roth Primrose 096 CV	\$A.J	-65	95%

CED	BW	WW	YW	SC	MILK	RE	MARB
+12	-.1	+24	+32	+1.83	+29	+1.21	+1.33
10%	20%	95%	95%	50%	35%	90%	75%

CED	BW	WW	YW	DMI	YH	SC	DOC	HP	CEM	MILK	MW	MH	CW	MARB	RE	FAT	TEND
47	66	98	100	7	93	48	78	49	87	23	99	99	99	78	89	53	67

Will sell with a calf at side (Lot 69A) by CONNEALY COMMERCE.

70 LESIKAR BLACKCAP H794

Birth Date: 04-30-2020 Cow 19830013 Tattoo: H794

#*O C C Paxton 730P	+O C C Focus 813F	\$M	+58	55%
Lesikar Paxton Z305	O C C Blackbird 736K	\$W	+45	80%
17289419 +Lesikar Barbara X933	#*O C C Emblazon 854E	\$F	+39	95%
ANGUS 3S	+Sedgwicks Barbara 087	\$G	+27	85%
#*O C C Paxton 730P	+O C C Focus 813F	\$B	+66	95%
Lesikar Blackcap D824	O C C Blackbird 736K	\$C	+144	95%
18895538 Lesikar Blackcap B389	#O C C Anchor 771A	\$A.H	-104	95%
	+Lesikar Blackcap U730	\$A.J	-123	95%

CED	BW	WW	YW	SC	MILK	RE	MARB
+11	-2.8	+30	+63	+1.80	+29	-.14	+1.40
15%	1%	95%	95%	50%	35%	95%	65%

CED	BW	WW	YW	DMI	YH	SC	DOC	HP	CEM	MILK	MW	MH	CW	MARB	RE	FAT	TEND
10	2	99	84	24	93	57	94	62	38	10	99	100	98	61	100	80	84

Bred to calve December 19, 2023, to POSS WINCHESTER. Examined Safe.

Lesikar Ranch Angus Females



GAR EXT 2104 - Famous full sister to the Lesikar foundation female, A Plus Blackcap 0037, whose descendants sell.

71 LESIKAR BLACKCAP G491

Birth Date: 12-11-2019 Cow 19671610 Tattoo: G491

#*G A R Grid Maker	#G D A R Traveler 044	\$M	+62	45%
#*S A V Bismarck 5682	G A R Precision 2536	\$W	+64	25%
15109865 S A V Abigale 0451	#Schoenes Fix It 826	\$F	+78	60%
ANGUS Presented by Angus Descendant	S A V Abigale 6062	\$G	+27	85%
#D H D Traveler 6807	#Q A S Traveler 23-4	\$B	+105	85%
+Lesikar Blackcap Y877	#Bemindful Maid D H D 0807	\$C	+198	80%
17169585 +A Plus Blackcap 0037	#*N Bar Emulation EXT	\$C	-9	90%
	#G A R Scotch Cap 867	\$A.H	-9	90%
		\$A.J	-30	90%

CED	BW	WW	YW	SC	MILK	RE	MARB
+9	+2.7	+66	+111	+62	+27	+28	+29
25%	80%	25%	30%	65%	45%	85%	80%

CED	BW	WW	YW	DMI	YH	SC	DOC	HP	CEM	MILK	MW	MH	CW	MARB	RE	FAT	TEND
55	90	19	35	72	22	65	81	80	95	44	51	51	52	76	83	80	39

Sells with a bull calf at side (Lot 71A) calved September 1, 2023, by KENNY ROGERS. Tattoo L130.

72 LESIKAR ERICA G452

Birth Date: 09-24-2019 Cow *19671579 Tattoo: G452

#Sitz Traveler 8180	#G D A R Traveler 71	\$M	+68	30%
#*S A V Final Answer 0035	Sitz Everelda Entense 1137	\$W	+50	65%
13592905 S A V Emulous 8145	#Bon View Bando 598	\$F	+36	95%
ANGUS Presented by Angus Descendant	S A V Sky Emulous 2124	\$G	+22	95%
#*O C C Paxton 730P	+O C C Focus 813F	\$B	+58	95%
Lesikar Erica D771	O C C Blackbird 736K	\$C	+143	95%
18895536 Lesikar Erica B385	*O C C Thumper 819T	\$C	+20	80%
	Roden Lady Frontier 5137	\$A.H	+20	80%
		\$A.J	-26	85%

CED	BW	WW	YW	SC	MILK	RE	MARB
+14	-2.2	+36	+62	+93	+24	-.08	+32
3%	2%	95%	95%	40%	70%	95%	75%

CED	BW	WW	YW	DMI	YH	SC	DOC	HP	CEM	MILK	MW	MH	CW	MARB	RE	FAT	TEND
8	4	90	89	17	97	40	82	21	62	50	97	100	99	80	99	99	12

Sells with a bull calf at side (Lot 72A) calved August 23, 2023, by TAR DOMINANCE 0031. Tattoo L115.



OCC Paxton 730P - His granddaughters sell.

73 LESIKAR BLACKCAP D747

Birth Date: 08-31-2016 Cow +18899546 Tattoo: D747

**S A V Final Answer 0035	#Sitz Traveler 8180	\$M	+56	65%
#*K C F Bennett Absolute	S A V Emulous 8145	\$W	+55	50%
16430795 Thomas Miss Lucy 5152	#+Wulffs Ext 6106	\$F	+75	70%
ANGUS Presented by Angus Descendant	Thomas Miss Lucy 3050	\$G	+53	30%
#*S S Objective T510 0T26	#S S Traveler 6807 T510	\$B	+127	55%
G A R Objective 1765	S S Miss Rita R011 7R8	\$C	+221	55%
15129446 +G A R 1407 New Design 2453	#Bon View New Design 1407	\$A.H	+76	50%
	+G A R Precision 4529	\$A.J	+36	60%

CED	BW	WW	YW	SC	MILK	RE	MARB
+9	-1.0	+54	+90	+1.19	+21	+3.4	+7.4
25%	10%	60%	70%	25%	85%	80%	25%

CED	BW	WW	YW	DMI	YH	SC	DOC	HP	CEM	MILK	MW	MH	CW	MARB	RE	FAT	TEND
56	32	68	80	18	50	38	55	89	63	74	60	56	76	55	87	64	91

• Will sell with a calf at side (Lot 73A) by KENNY ROGERS.

74 LESIKAR BLACKCAP F304 [DDF]

Birth Date: 10-15-2018 Cow 19402225 Tattoo: F304

#*Connealy Impression	#Connealy Reflection	\$M	+71	20%
#*MAR Innovation 251	Pearl Pammy of Conanga 194	\$W	+61	30%
16983331 #*MAR Final Kahuna 856	#*S A V Final Answer 0035	\$F	+101	15%
ANGUS Presented by Angus Descendant	#MAR Kahuna Precision 328 674	\$G	+65	15%
#Connealy Thunder	#Baldridge Kaboom K243 KCF	\$B	+166	10%
Lesikar Blackcap Y807	#Parka of Conanga 241	\$C	+286	10%
16871850 R B Blackcap 738	#*G A R Predestined	\$A.H	+137	15%
	+Twin Eagles Blackcap 418P	\$A.J	+128	15%

CED	BW	WW	YW	SC	MILK	RE	MARB
-6	+3.4	+63	+109	+1.10	+29	+8.8	+7.9
95%	90%	30%	35%	30%	35%	10%	20%

CED	BW	WW	YW	DMI	YH	SC	DOC	HP	CEM	MILK	MW	MH	CW	MARB	RE	FAT	TEND
93	68	61	53	27	67	46	46	27	65	33	76	64	32	34	20	53	30

Sells with a bull calf at side (Lot 74A) calved August 23, 2023, by KENNY ROGERS. Tattoo L109.

75 LESIKAR BURGESS G476

Birth Date: 11-21-2019 Cow 19670504 Tattoo: G476

#*O C C Paxton 730P	+O C C Focus 813F	\$M	+29	95%
Lesikar Paxton A220	O C C Blackbird 736K	\$W	+44	80%
17820962 #+LAR Pride N154	#B/R New Design 036	\$F	+85	45%
ANGUS Presented by Angus Descendant	M A 6127 of 9352 Ext	\$G	+40	60%
+Lesikar Emblazon W604	#+O C C Emblazon 854E	\$B	+125	55%
Lesikar Burgess D711	+A Plus Blackcap 0037	\$C	+191	85%
18514352 Lesikar Burgess X709	#*Connealy All Around	\$A.H	-64	95%
	+Lesikar Burgess T662	\$A.J	-63	95%

CED	BW	WW	YW	SC	MILK	RE	MARB
-6	+5.0	+58	+94	+33	+23	+4.1	+4.5
95%	95%	45%	60%	80%	75%	70%	60%

CED	BW	WW	YW	DMI	YH	SC	DOC	HP	CEM	MILK	MW	MH	CW	MARB	RE	FAT	TEND
99	97	28	61	68	7	76	100	86	87	62	14	23	16	62	76	43	73

Sells with a heifer calf at side (Lot 75A) calved August 23, 2023, by KENNY ROGERS. Tattoo L114.

76 LESIKAR BURGESS F201

Birth Date: 03-16-2018 Cow 19183379 Tattoo: F201

#*O C C Paxton 730P	+O C C Focus 813F	\$M	+51	75%
Lesikar Paxton A323	O C C Blackbird 736K	\$W	+64	25%
17820951 +Lesikar Blackcap Y902	#*O C C Missing Link 830M	\$F	+75	70%
ANGUS Presented by Angus Descendant	G A R Objective 1765	\$G	+37	65%
+Lesikar Impact W601	#+O C C Emblazon 854E	\$B	+111	75%
Lesikar Burgess C592	+A Plus Blackcap 0037	\$C	+195	80%
18514162 +Lesikar Burgess T663	#BR Midland	\$A.H	+34	70%
	+Twin Eagles Burgess 316N	\$A.J	+0	75%

CED	BW	WW	YW	SC	MILK	RE	MARB
+3	+2.3	+72	+115	-27	+21	+4.8	+3.7
75%	75%	15%	25%	95%	85%	60%	70%

CED	BW	WW	YW	DMI	YH	SC	DOC	HP	CEM	MILK	MW	MH	CW	MARB	RE	FAT	TEND
83	75	8	33	72	24	89	95	77	89	69	16	21	29	57	33	28	62

Sells with a bull calf at side (Lot 76A) calved August 20, 2023, by AF MAGNUM AI 8084. Tattoo L104.

Lesikar Ranch Angus Females

77 LESIKAR BLACKCAP G392

Birth Date: 03-29-2019 Cow 19512651 Tattoo: G392

#*O C C Paxton 730P

+O C C Focus 813F

\$M +52 75%

Lesikar Paxton A220

O C C Blackbird 736K

\$W +36 95%

17820962 #+LAR Pride N154

#B/R New Design 036

\$F +65 90%

ANGUS 3S

#+*O C C Eureka 865E

M A 6127 of 9352 Ext

\$G +28 85%

+Lesikar Blackcap A189

#+O C C Backstop 888B

\$B +94 95%

17573994 +A Plus Blackcap 0037

#Blackbird of R R 1204

\$C +174 95%

#*N Bar Emulation EXT

\$A,H -96 95%

#G A R Scotch Cap 867

\$A,J -92 95%

CED	BW	WW	YW	SC	MILK	RE	MARB
+3	+3.8	+42	+70	+29	+22	+0.7	+32
75%	95%	90%	90%	85%	80%	95%	75%

CED	BW	WW	YW	DMI	YH	SC	DOC	HP	CEM	MILK	MW	MH	CW	MARB	RE	FAT	TEND
89	96	69	89	11	18	79	60	85	98	75	77	59	80	79	98	59	31

Bred to calve November 24, 2023, to LAR MAN IN BLACK. Examined Safe.

78 LESIKAR BLACKCAP E121

Birth Date: 11-27-2017 Cow 19183561 Tattoo: E121

#*O C C Paxton 730P

+O C C Focus 813F

\$M +63 40%

Lesikar Paxton A220

O C C Blackbird 736K

\$W +38 90%

17820962 #+LAR Pride N154

#B/R New Design 036

\$F +60 95%

ANGUS 3S

#+*O C C Eureka 865E

M A 6127 of 9352 Ext

\$G +30 80%

+Lesikar Blackcap B366

#+O C C Backstop 888B

\$B +90 95%

17876835 +A Plus Blackcap 0037

#Blackbird of R R 1204

\$C +180 90%

#*N Bar Emulation EXT

\$A,H -33 75%

#G A R Scotch Cap 867

\$A,J -13 80%

CED	BW	WW	YW	SC	MILK	RE	MARB
+12	-2.1	+34	+66	-.37	+22	+32	+30
10%	3%	95%	95%	95%	80%	80%	80%

CED	BW	WW	YW	DMI	YH	SC	DOC	HP	CEM	MILK	MW	MH	CW	MARB	RE	FAT	TEND
9	3	93	81	25	90	98	94	11	81	80	92	98	96	72	80	58	48

• Will sell with a calf at side (Lot 78A) by TAR DOMINANCE 0031.

79 LESIKAR BLACKCAP G367

Birth Date: 02-08-2019 Cow 19512615 Tattoo: G367

#*O C C Paxton 730P

+O C C Focus 813F

\$M +55 65%

Lesikar Paxton A220

O C C Blackbird 736K

\$W +58 40%

17820962 #+LAR Pride N154

#B/R New Design 036

\$F +40 95%

ANGUS 3S

#*O C C Paxton 730P

+O C C Focus 813F

\$G +42 55%

Lesikar Blackcap A245

O C C Blackbird 736K

\$B +82 95%

17820957 +Lesikar Blackcap Y817

#Jauer 353 Traveler 589 27

\$C +161 95%

+A Plus Blackcap 0037

\$A,H -52 95%

\$A,J -78 95%

CED	BW	WW	YW	SC	MILK	RE	MARB
+2	+1.1	+54	+85	+32	+21	+30	+45
80%	45%	60%	75%	80%	85%	85%	60%

CED	BW	WW	YW	DMI	YH	SC	DOC	HP	CEM	MILK	MW	MH	CW	MARB	RE	FAT	TEND
61	41	56	94	43	55	71	100	76	77	89	95	93	95	71	94	25	95

Sells with a bull calf at side (Lot 79A) calved September 14, 2023, by TAR DOMINANCE 0031. Tattoo L147.

80 LESIKAR RITA D269 [DDF]

Birth Date: 12-18-2016 Cow 18891954 Tattoo: D269

#*O C C Paxton 730P

+O C C Focus 813F

\$M +67 30%

Lesikar Paxton Z305

O C C Blackbird 736K

\$W +52 60%

17289419 +Lesikar Barbara X933

#+O C C Emblazon 854E

\$F +46 95%

ANGUS 3S

#*G A R Predestined

+Sedgwicks Barbara 087

\$G +34 70%

+Lesikar Rita W572

#B/R New Design 036

\$B +81 95%

16658943 +Twin Lakes 444L Rita 615

#+G A R Ext 4206

\$C +172 95%

#G A R Precision 1680

\$A,H +26 75%

+Whitstone Rita 444L

\$A,J -29 90%

CED	BW	WW	YW	SC	MILK	RE	MARB
+12	+4	+41	+63	+03	+24	+16	+46
10%	30%	90%	95%	95%	70%	95%	60%

CED	BW	WW	YW	DMI	YH	SC	DOC	HP	CEM	MILK	MW	MH	CW	MARB	RE	FAT	TEND
56	73	91	98	3	99	84	81	71	48	76	99	100	99	68	95	89	92

Sells with a bull calf at side (Lot 80A) calved September 11, 2023, by CONNEALY COMMERCE. Tattoo L368.



GAR EXT 2114 - Famous full sister to the Lesikar foundation female, A Plus Blackcap 0037, whose descendants sell.

81 LESIKAR BLACKCAP G598

Birth Date: 03-23-2019 Cow 19512634 Tattoo: G598

#O C C Anchor 771A

#D H D Traveler 6807

\$M +62 45%

+Lesikar Anchor A429

O C C Juanada 709V

\$W +39 90%

17573955 +A Plus Blackcap 0037

#*N Bar Emulation EXT

\$F +61 95%

ANGUS 3S

#+O C C Emblazon 854E

#G A R Scotch Cap 867

\$G +31 80%

+Lesikar Blackcap X620

#D H D Traveler 6807

\$B +92 95%

16663827 +A Plus Blackcap 0037

Dixie Erica of C H 1019

\$C +181 90%

#*N Bar Emulation EXT

\$A,H -26 90%

#G A R Scotch Cap 867

\$A,J -61 95%

CED	BW	WW	YW	SC	MILK	RE	MARB
+7	+2.3	+45	+77	+16	+17	+21	+29
40%	75%	85%	85%	90%	95%	90%	80%

CED	BW	WW	YW	DMI	YH	SC	DOC	HP	CEM	MILK	MW	MH	CW	MARB	RE	FAT	TEND
30	46	84	85	31	84	90	96	69	88	94	93	85	94	72	96	18	21

Will sell with a calf at side (Lot 81A) by KENNY ROGERS.

82 LESIKAR BLACKCAP G599

Birth Date: 03-24-2019 Cow 19512637 Tattoo: G599

#O C C Anchor 771A

#D H D Traveler 6807

\$M +69 25%

+Lesikar Anchor A429

O C C Juanada 709V

\$W +49 70%

17573955 +A Plus Blackcap 0037

#*N Bar Emulation EXT

\$F +58 95%

ANGUS 3S

#+S A V Bismarck 5682

#G A R Scotch Cap 867

\$G +32 75%

+Lesikar Blackcap X961

S A V Abigale 0451

\$B +90 95%

16871845 HA Blackcap 1137

#Bon View New Design 208

\$C +186 90%

+A Plus Blackcap 0140

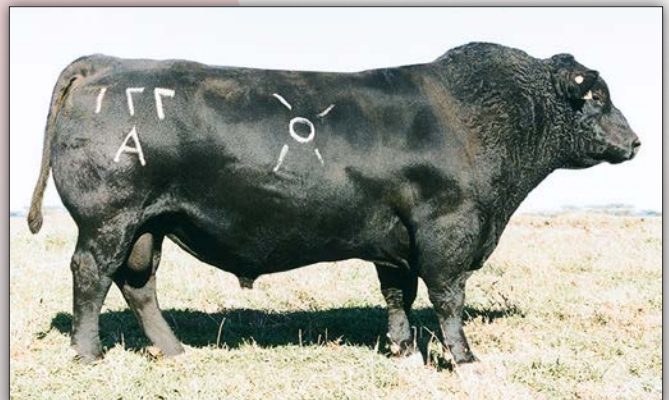
\$A,H +77 45%

\$A,J +51 50%

CED	BW	WW	YW	SC	MILK	RE	MARB
+13	-.2	+42	+70	-.23	+21	+49	+25
4%	20%	90%	90%	95%	85%	55%	85%

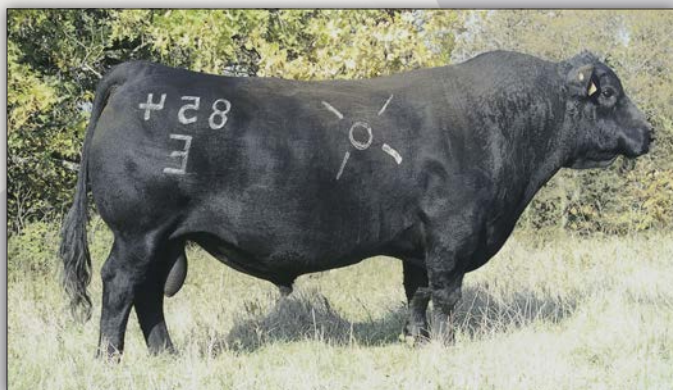
CED	BW	WW	YW	DMI	YH	SC	DOC	HP	CEM	MILK	MW	MH	CW	MARB	RE	FAT	TEND
12	45	69	86	6	93	92	89	51	81	85	97	94	92	89	52	30	49

Bred to calve December 25, 2023, to LAR MAN IN BLACK. Examined Safe.



OCC Anchor 771A - His granddaughters sell.

Lesikar Ranch Angus Females



OCC Emblazon 854E - His granddaughters sell.

83 LESIKAR BLACKCAP G425

Birth Date: 08-30-2019 Cow 19730244 Tattoo: G425

O C C Rear End 751R	#*O C C Homer 650H	\$M	+59	65%
*O C C Big Time 746Z	+FCC Revolution Rose 995N	\$W	+46	85%
17696450	*O C C Dixie Erica 771R	\$F	+48	95%
ANGUS CS	O C C Dixie Erica 776M	\$G	+30	90%
#O C C Jet Stream 825J	#*O C C Emblazon 854E	\$B	+78	95%
Lesikar Blackcap Z953	O C C Juanada 968G	\$C	+160	95%
17175074	G A R Objective 1765	\$A,H	+49	80%
	#*S S Objective T510 0T26	\$A,J	+35	75%
	+G A R 1407 New Design 2453			

CED	BW	WW	YW	SC	MILK	RE	MARB
+8	+4	+45	+72	+62	+21	+64	+25
35%	30%	95%	95%	70%	85%	55%	90%

CED	BW	WW	YW	DMI	YH	SC	DOC	HP	CEM	MILK	MW	MH	CW	MARB	RE	FAT	TEND
54	61	71	93	44	92	48	62	49	100	90	74	90	90	85	41	93	45

- Bred to calve February 5, 2024, to AF Magnum AI 8084. Examined Safe.

84 LESIKAR BLACKCAP D248

Birth Date: 11-12-2016 Cow 18891941 Tattoo: D248

#*O C C Emblazon 854E	#D H D Traveler 6807	\$M	+66	35%
+Lesikar Emblazon X947	Dixie Erica of C H 1019	\$W	+43	85%
16663825	+Sedgwicks Barbara 087	\$F	+51	95%
ANGUS CS	#*O C C Backstop 888B	\$G	+27	85%
#*O C C Emblazon 854E	Sedgwicks Barbara 4171	\$B	+78	95%
+Lesikar Blackcap W605	#D H D Traveler 6807	\$C	+167	95%
16600073	Dixie Erica of C H 1019	\$A,H	-7	90%
	+A Plus Blackcap 0037	\$A,J	-61	95%
	#*N Bar Emulation EXT			
	#G A R Scotch Cap 867			

CED	BW	WW	YW	SC	MILK	RE	MARB
+14	-1.4	+29	+49	-38	+25	+20	+27
3%	5%	95%	95%	95%	60%	95%	80%

CED	BW	WW	YW	DMI	YH	SC	DOC	HP	CEM	MILK	MW	MH	CW	MARB	RE	FAT	TEND
7	15	96	97	15	95	95	98	44	81	57	100	100	89	70	74	43	58

- Sells with a bull calf at side (Lot 84A) calved August 26, 2023, by TAR DOMINANCE 0031. Tattoo L348.



OCC Eureka 865E - Grandsire of Lot 88.

85 LESIKAR ESTER F280

Birth Date: 09-05-2018 Cow 19402159 Tattoo: F280

#+O C C Emblazon 854E	#D H D Traveler 6807	\$M	+66	35%
+Lesikar Emblazon W604	Dixie Erica of C H 1019	\$W	+55	50%
16663831	+A Plus Blackcap 0037	\$F	+60	95%
ANGUS CS	#*N Bar Emulation EXT	\$G	+56	25%
Lesikar Direction T47	#G A R Scotch Cap 867	\$B	+115	70%
Lesikar Ester W480	#Morgans Direction 111 9901	\$C	+215	65%
16325707	HA Blackcap 1137	\$A,H	+34	70%
	#B/R New Design 036	\$A,J	+0	75%
	#Thomas Ester 4123			

CED	BW	WW	YW	SC	MILK	RE	MARB
+12	-.2	+38	+72	+23	+43	+46	+74
10%	20%	95%	90%	85%	1%	60%	25%

CED	BW	WW	YW	DMI	YH	SC	DOC	HP	CEM	MILK	MW	MH	CW	MARB	RE	FAT	TEND
26	40	86	64	54	33	72	96	19	57	1	83	49	78	29	73	52	24

- Sells with a heifer calf at side (Lot 85A) calved August 26, 2023, by KENNY ROGERS. Tattoo L120.

86 LESIKAR BURGESS F274

Birth Date: 09-01-2018 Cow *19402259 Tattoo: F274

#+O C C Emblazon 854E	#D H D Traveler 6807	\$M	+68	30%
+Lesikar Rebound X931	Dixie Erica of C H 1019	\$W	+40	90%
16663820	+Sedgwicks Barbara 087	\$F	+67	85%
ANGUS CS	#*O C C Backstop 888B	\$G	+11	95%
+Lesikar Impact W601	Sedgwicks Barbara 4171	\$B	+78	95%
Lesikar Burgess A321	#*O C C Emblazon 854E	\$C	+169	95%
17818605	+A Plus Blackcap 0037	\$A,H	+18	80%
	#B/R New Design 036	\$A,J	-19	85%
	+Twin Eagles Burgess 316N			

CED	BW	WW	YW	SC	MILK	RE	MARB
+5	+2.3	+37	+58	-.02	+24	+61	-.16
55%	75%	95%	95%	95%	70%	35%	95%

CED	BW	WW	YW	DMI	YH	SC	DOC	HP	CEM	MILK	MW	MH	CW	MARB	RE	FAT	TEND
96	98	78	84	14	75	90	71	15	88	62	83	92	79	97	25	41	48

- Will sell with a calf at side (Lot 86A) by AF MAGNUM AI 8084.

87 LESIKAR LENA E942

Birth Date: 09-04-2017 Cow 19183481 Tattoo: E942

#+O C C Emblazon 854E	#D H D Traveler 6807	\$M	+59	55%
+Lesikar Rebound X931	Dixie Erica of C H 1019	\$W	+47	75%
16663820	+Sedgwicks Barbara 087	\$F	+68	85%
ANGUS CS	#*O C C Backstop 888B	\$G	+2	95%
+L A R Faultless N167	Sedgwicks Barbara 4171	\$B	+70	95%
Lesikar Lena W843	#G A R Precision 1680	\$C	+150	95%
16325705	M A 6127 of 9352 Ext	\$A,H	-80	95%
	+O C C Flashback 824F	\$A,J	-105	95%
	Circle S Lena 068			

CED	BW	WW	YW	SC	MILK	RE	MARB
+7	-.1	+40	+62	+50	+26	+28	-.16
40%	20%	90%	95%	70%	55%	85%	95%

CED	BW	WW	YW	DMI	YH	SC	DOC	HP	CEM	MILK	MW	MH	CW	MARB	RE	FAT	TEND
50	32	75	94	25	64	82	65	11	50	33	74	85	80	100	91	99	42

- Will sell with a calf at side (Lot 87A) by AF MANGNUM AI 8084.

88 LESIKAR BLACKCAP E998

Birth Date: 11-01-2017 Cow 19183536 Tattoo: E998

#+*O C C Eureka 865E	#*O C C Backstop 888B	\$M	+61	50%
+Lesikar Eureka A188	#Blackbird of R R 1204	\$W	+50	65%
17574004	+A Plus Blackcap 0037	\$F	+51	95%
ANGUS CS	#*N Bar Emulation EXT	\$G	+49	40%
#*Mytty In Focus	#G A R Scotch Cap 867	\$B	+100	90%
Lesikar Blackcap W588	#S A F Focus of E R	\$C	+191	85%
16658712	Mytty Countess 906	\$A,H	-21	90%
	#G A R Precision 1680	\$A,J	-63	95%
	+A Plus Blackcap 0037			

CED	BW	WW	YW	SC	MILK	RE	MARB
+8	+1	+36	+58	+1.24	+31	-.19	+85
30%	25%	95%	95%	20%	20%	95%	20%

CED	BW	WW	YW	DMI	YH	SC	DOC	HP	CEM	MILK	MW	MH	CW	MARB	RE	FAT	TEND
69	59	80	95	14	57	11	62	91	84	17	95	70	93	18	100	96	96

- Sells with a bull calf at side (Lot 88A) calved August 16, 2023.

Lesikar Ranch Angus Females

89 LESIKAR BLACKCAP J998

Birth Date: 12-22-2021 Cow 20391527 Tattoo: J998



*#Connealy Confidence Plus	#*Connealy Confidence 0100	\$M	+70	35%
*#Connealy Emerald	Elbanna of Conanga 1209	\$W	+46	85%
19257149	Jace of Conanga 6571	\$F	+64	95%
	#*Connealy Armory	\$G	+54	40%
	+Jazzy of Conanga 4660 860C	\$B	+118	80%
	#O C C Anchor 771A	\$C	+223	75%
#Lesikar Blackcap Z317	O C C Juanada 709V	\$A,H	+94	55%
17289360	+A Plus Blackcap 0037	\$A,J	+52	70%
	#*N Bar Emulation EXT			
	#G A R Scotch Cap 867			



Lesikar Blackcap J998 - Lot 89

CED	BW	WW	YW	SC	MILK	RE	MARB
+8	+1	+51	+92	1+.38	+20	1+.58	1+.64
35%	25%	85%	80%		90%	65%	55%

CED	BW	WW	YW	DMI	YH	SC	DOC	HP	CEM	MILK	MW	MH	CW	MARB	RE	FAT	TEND
N/A	N/A	N/A	N/A	N/A	N/A	N/A	N/A	N/A	N/A	N/A	N/A	N/A	N/A	N/A	N/A	N/A	N/A

• Bred to calve February 19, 2024, to CONNEALY COMMERCE. Examined Safe.

90 LESIKAR LASS J992

Birth Date: 11-09-2021 Cow 20231945 Tattoo: J992

#*Plattemere Weigh Up K360	#*Sitz Upward 307R	\$M	+66	45%
Mead Perseverance R1266	#Barbara of Plattemere 337	\$W	+61	40%
19162202	#Mead Miss Marathon L835	\$F	+86	45%
	#Connealy Answer 71	\$G	+50	50%
	#Mead Miss Marathon J630	\$B	+136	55%
	#*O C C Emblazon 854E	\$C	+242	55%
	+Lesikar Rebound X931	\$A,H	+113	45%
Lesikar Lass E132	+Sedgwicks Barbara 087	\$A,J	+80	55%
19183577	Lesikar Lass B437			
	+Lesikar Impact W601			
	Lesikar Lass X668			

CED	BW	WW	YW	SC	MILK	RE	MARB
+5	+1.7	+66	+109	1+.45	+25	1+.75	1+.56
60%	65%	40%	55%	75%	60%	35%	65%

CED	BW	WW	YW	DMI	YH	SC	DOC	HP	CEM	MILK	MW	MH	CW	MARB	RE	FAT	TEND
N/A	N/A	N/A	N/A	N/A	N/A	N/A	N/A	N/A	N/A	N/A	N/A	N/A	N/A	N/A	N/A	N/A	N/A

• Bred to calve January 7, 2024, to CONNEALY COMMERCE. Examined Safe.

91 LESIKAR BLACKCAP J789

Birth Date: 11-15-2021 Cow *20386557 Tattoo: J789

*Tehama Upward Y238	#*Sitz Upward 307R	\$M	+83	10%
#*Tehama Tahoe B767	+Tehama Elite Blackbird T735	\$W	+70	20%
17817177	**Tehama Mary Blackbird Y684	\$F	+74	75%
	**S A V Final Answer 0035	\$G	+42	70%
	Tehama Mary Blackbird T073	\$B	+116	80%
	*O C C Big Time 746Z	\$C	+233	65%
Lesikar Blackcap E904	O C C Rear End 751R	\$A,H	+100	50%
19183440	+Lesikar Blackcap Y817	\$A,J	+95	45%
	*O C C Dixie Erica 771R			
	#Jauer 353 Traveler 589 27			
	+A Plus Blackcap 0037			

CED	BW	WW	YW	SC	MILK	RE	MARB
+5	+1.7	+72	+118	+86	+21	+75	+43
60%	65%	25%	35%	50%	85%	35%	75%

CED	BW	WW	YW	DMI	YH	SC	DOC	HP	CEM	MILK	MW	MH	CW	MARB	RE	FAT	TEND
91	95	9	22	79	50	47	25	24	73	85	71	83	54	69	20	67	74

• Open.

92 LESIKAR BLACKCAP K806

Birth Date: 01-16-2022 Cow 20390969 Tattoo: K806

#*Basin Payweight 1682	#*Basin Payweight 006S	\$M	+77	15%
*#Deer Valley Growth Fund	21AR O Lass 7017	\$W	+69	20%
18827828	*#Deer Valley Rita 36113	\$F	+98	25%
	#*Plattemere Weigh Up K360	\$G	+34	85%
	+Deer Valley Rita 9457	\$B	+132	60%
	#*S A V Final Answer 0035	\$C	+248	45%
Lesikar Blackcap E961	S A V Emulous 8145	\$A,H	+122	35%
19183500	+Lesikar Blackcap Y902	\$A,J	+116	35%
	#*O C C Missing Link 830M			
	G A R Objective 1765			

CED	BW	WW	YW	SC	MILK	RE	MARB
+8	+1.3	+71	+127	1+.59	+33	1+.57	1+.36
35%	55%	25%	25%	70%	10%	65%	85%

CED	BW	WW	YW	DMI	YH	SC	DOC	HP	CEM	MILK	MW	MH	CW	MARB	RE	FAT	TEND
N/A	N/A	N/A	N/A	N/A	N/A	N/A	N/A	N/A	N/A	N/A	N/A	N/A	N/A	N/A	N/A	N/A	N/A

• Open.

93 LESIKAR BLACKCAP K879

Birth Date: 08-12-2022 Cow *20471012 Tattoo: K879

#*Basin Payweight 1682	#*Basin Payweight 006S	\$M	+60	60%
*#Deer Valley Growth Fund	21AR O Lass 7017	\$W	+84	2%
18827828	*#Deer Valley Rita 36113	\$F	+112	10%
	#*Plattemere Weigh Up K360	\$G	+35	80%
	+Deer Valley Rita 9457	\$B	+147	40%
	#*Connealy Consensus 7229	\$C	+251	45%
Lesikar Blackcap E986	Blue Lilly of Conanga 16	\$A,H	-18	95%
19183527	+Lesikar Blackcap Y877	\$A,J	+8	85%
	#D H D Traveler 6807			
	+A Plus Blackcap 0037			

CED	BW	WW	YW	SC	MILK	RE	MARB
+1	+3.0	+89	+153	+61	+34	+38	+38
90%	90%	2%	3%	70%	10%	90%	80%

CED	BW	WW	YW	DMI	YH	SC	DOC	HP	CEM	MILK	MW	MH	CW	MARB	RE	FAT	TEND
78	76	7	9	92	24	51	74	34	69	30	24	20	9	79	84	56	62

• Open.

94 LESIKAR BLACKCAP K895

Birth Date: 08-29-2022 Cow *20474286 Tattoo: K895

#*TEX Playbook 5437	#*Basin Payweight 1682	\$M	+97	1%
*#BJ Surpass	+*Rita 1C43 of 9M26 Complete	\$W	+74	10%
19774516	*#BJ Prophet 5275	\$F	+101	20%
	*#*G A R Prophet	\$G	+72	15%
	*#BJ Complete 1165	\$B	+173	15%
	#*Connealy Consensus 7229	\$C	+321	4%
*Lesikar Blackcap G460	Blue Lilly of Conanga 16	\$A,H	+148	20%
19672513	*Lesikar Blackcap E899	\$A,J	+125	30%
	+Lesikar Rebound X931			
	Lesikar Blackcap A336			

CED	BW	WW	YW	SC	MILK	RE	MARB
+11	+5	+63	+115	+09	+35	+51	+1.08
15%	35%	50%	40%	90%	10%	75%	15%

CED	BW	WW	YW	DMI	YH	SC	DOC	HP	CEM	MILK	MW	MH	CW	MARB	RE	FAT	TEND
37	54	42	35	82	32	86	40	15	92	13	91	48	23	7	65	73	76

• Open.

95 LESIKAR ESTER K949

Birth Date: 11-06-2022 Cow 20594655 Tattoo: K949

#*TEX Playbook 5437	#*Basin Payweight 1682	\$M	+95	1%
*#BJ Surpass	+*Rita 1C43 of 9M26 Complete	\$W	+84	2%
19774516	*#BJ Prophet 5275	\$F	+86	45%
	#*G A R Prophet	\$G	+58	35%
	*#BJ Complete 1165	\$B	+144	45%
	#*O C C Emblazon 854E	\$C	+282	20%
Lesikar Ester H594	+A Plus Blackcap 0037	\$A,H	+132	30%
20082893	Lesikar Ester W480	\$A,J	+96	45%
	+Thomas Ester 0660			

CED	BW	WW	YW	SC	MILK	RE	MARB
+13	-.3	+67	+119	+30	+41	+74	+73
10%	20%	35%	35%	85%	1%	40%	45%

CED	BW	WW	YW	DMI	YH	SC	DOC	HP	CEM	MILK	MW	MH	CW	MARB	RE	FAT	TEND
7	10	29	28	89	85	72	93	4	68	3	81	76	25	38	42	40	48

• Open.

Reference Sires

K AF MAGNUM AI 8084

Birth Date: 09-24-2018 Bull *19436773 Tattoo: 8084

#*K C F Bennett Southside #**GAR-EGL Protege

SIRE: *Mead Magnitude 18543414 #*Mead Primrose N198
DAM: **AF Miss Annie 4051 18084022 #AF Miss Annie 9080

CED	BW	WW	YW	SC	MILK	RE	MARB
+10	+2.1	+95	+165	+5.4	+23	+1.03	+1.00
25%	70%	1%	1%	70%	70%	5%	15%
\$M	\$W	\$F	\$G	\$B	\$C	\$A.H	\$A.J
+57	+78	+118	+76	+195	+310	+193	+212
60%	10%	5%	10%	4%	5%	3%	2%



L TAR DOMINANCE 0031

Birth Date: 04-03-2020 Bull *19719061 Tattoo: 0031

+*Quaker Hill Manning 4EX9 #*Connealy In Sure 8524

SIRE: *E W A Peyton 642 18675107 #**E W A 444 of 968 Progress
DAM: **2 Bar Insure 5155 18047513 +*2 Bar Prediction 2080

CED	BW	WW	YW	SC	MILK	RE	MARB
+7	+2.5	+94	+163	+1.42	+29	+1.01	+1.47
45%	80%	1%	2%	15%	35%	10%	2%
\$M	\$W	\$F	\$G	\$B	\$C	\$A.H	\$A.J
+76	+84	+133	+101	+234	+379	+216	+218
15%	2%	1%	1%	1%	1%	1%	1%



M LAR MAN IN BLACK

Birth Date: 01-27-2020 Bull *19955191 Tattoo: 075

#*Connealy Black Granite #*Sitz Top Game 561X

SIRE: *Bar R Jet Black 5063 18389838 Bar R Iris Anita 0113
DAM: #JMB Maxine TG 2131 17262346 #JMB Maxine Deluxe 9034

CED	BW	WW	YW	SC	MILK	RE	MARB
+10	+2.6	+95	+167	+1.43	+22	+0.85	+1.04
25%	80%	1%	1%	15%	75%	20%	15%
\$M	\$W	\$F	\$G	\$B	\$C	\$A.H	\$A.J
+61	+74	+130	+71	+202	+323	+201	+215
50%	15%	2%	15%	3%	3%	2%	1%



N KENNY ROGERS

Birth Date: 01-09-2021 Bull +*20092065 Tattoo: 1102

#**Baldridge Colonel C251 #*Hoover Dam

SIRE: *SydGen KCF Gavel 8361 19195196 *K C F Miss Fortress B398
DAM: #Foxhovens Kintry Annie 532 18265366 #Foxhovens Kintry Annie 315

CED	BW	WW	YW	SC	MILK	RE	MARB
+8	+2.1	+99	+171	+0.72	+37	+1.12	+1.16
40%	70%	1%	1%	60%	4%	3%	10%
\$M	\$W	\$F	\$G	\$B	\$C	\$A.H	\$A.J
+54	+90	+125	+91	+216	+334	+227	+240
65%	1%	3%	3%	1%	2%	1%	1%



O BJ SURPASS

Birth Date: 09-01-2019 Bull +*19774516 Tattoo: 9156

#**Basin Payweight 1682 #**G A R Prophet

SIRE: #**TEX Playbook 5437 18414912 +*Rita 1C43 of 9M26 Complete
DAM: **BJ Prophet 5275 18531298 *BJ Complete 1165

CED	BW	WW	YW	SC	MILK	RE	MARB
+13	-.4	+67	+108	+0.75	+33	+0.67	+0.80
10%	20%	40%	55%	60%	15%	40%	25%
\$M	\$W	\$F	\$G	\$B	\$C	\$A.H	\$A.J
+114	+79	+90	+61	+151	+310	+151	+126
1%	10%	45%	25%	30%	5%	15%	25%



COMMENTS FROM OUR SALE MANAGERS:

We are delighted to extend an invitation to you for the 8th Annual Lesikar Ranch "Big Butts" Herd Bull & Female Sale. The Angus Genetics being offered are exceptional and boast some of the most elite pedigrees found in America. The Lesikar Family has bred and fed their cattle with great care, ensuring the cattle are presented in peak condition. They have used modern-day technology, such as genomic testing, to meet the demands of today's beef market. The sale features many breed-leading sires, including Growth Fund, Tahoe, Commerce, Dual Threat, Peyton, and many more, who have impressive numbers and performance records.

Whether you are searching for a herd sire or a production female, you will undoubtedly find what you need in this sale. We look forward to seeing you in Athens, Texas, on Wednesday, November 15th. If you require any assistance or have any questions, please do not hesitate to contact us at the American Angus Hall of Fame. We are always here to serve you!



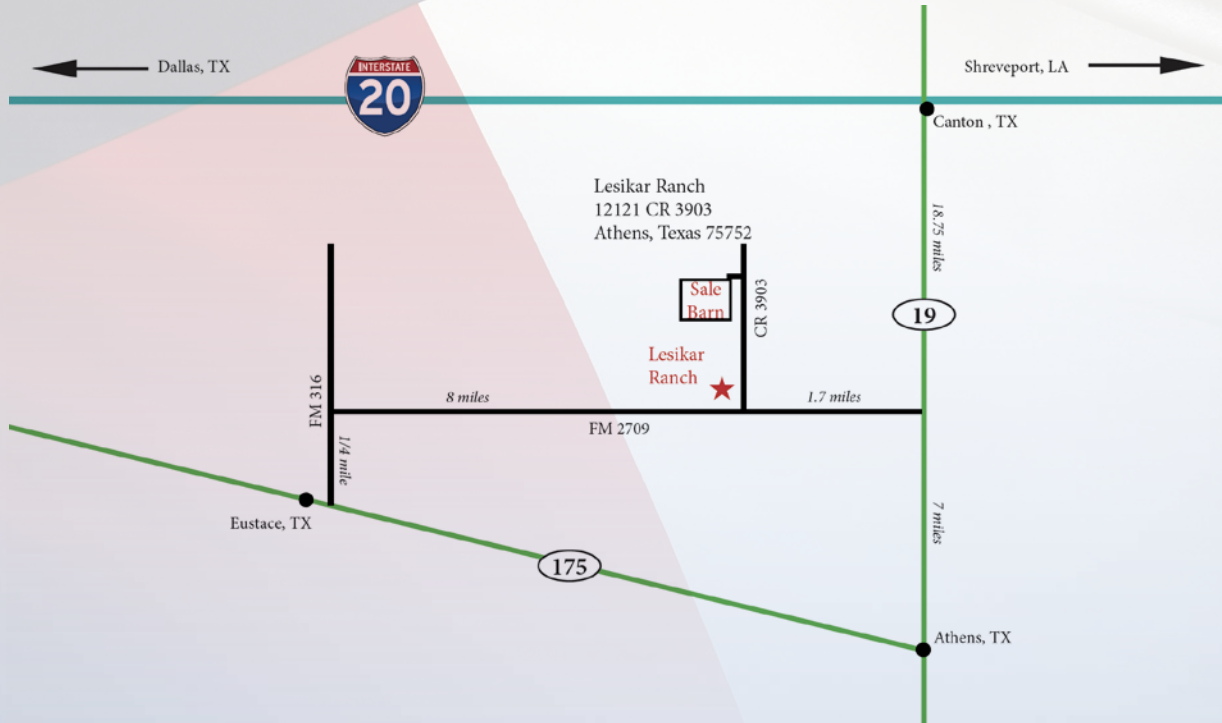
Tom Burke
(816) 853-2697



Kurt Schaff
(816) 520-6447



Alex Popplewell
(270) 566-8822



LESIKAR BREEDING GUARANTEE:

We offer a full breeding season guarantee for any injury that would keep the bull from being a breeder for the first breeding season. All the bulls have passed a breeding soundness exam by our veterinarian. We require that you notify Lesikar Ranch about the bull in case of injury. If a problem occurs, we will give you a suitable replacement or you will receive full credit, minus the salvage value of the original bull, toward another purchase in next year's sale. We also reserve the right to a second opinion by a veterinarian of our choice. In the situation where we need to bring the bull back to the ranch for our vet to examine, it's the buyer's responsibility to get the bull back to our ranch at their expense. We will pay to have our vet examine the bull again, if he passes the exam, it's the buyer's responsibility to come pick up the bull at our ranch at their expense.

THANK YOU FOR COMING TO THE SALE



Lesikar Ranch
6655 Corporation Parkway
Fort Worth, Texas 76126



BIG BUTTS

ANGUS HERD BULL & FEMALE SALE

WEDNESDAY, NOVEMBER 15, 2023
1PM | ATHENS, TEXAS