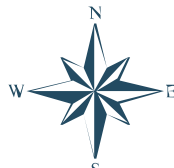


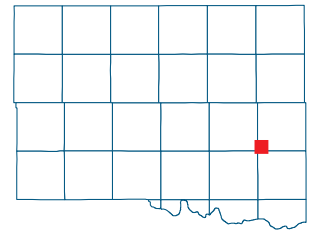


Assessor's Office
 200 N Choctaw Ave.
 El Reno, OK 73036
 Phone: (405) 295-6331
 FAX: (405) 422-2406



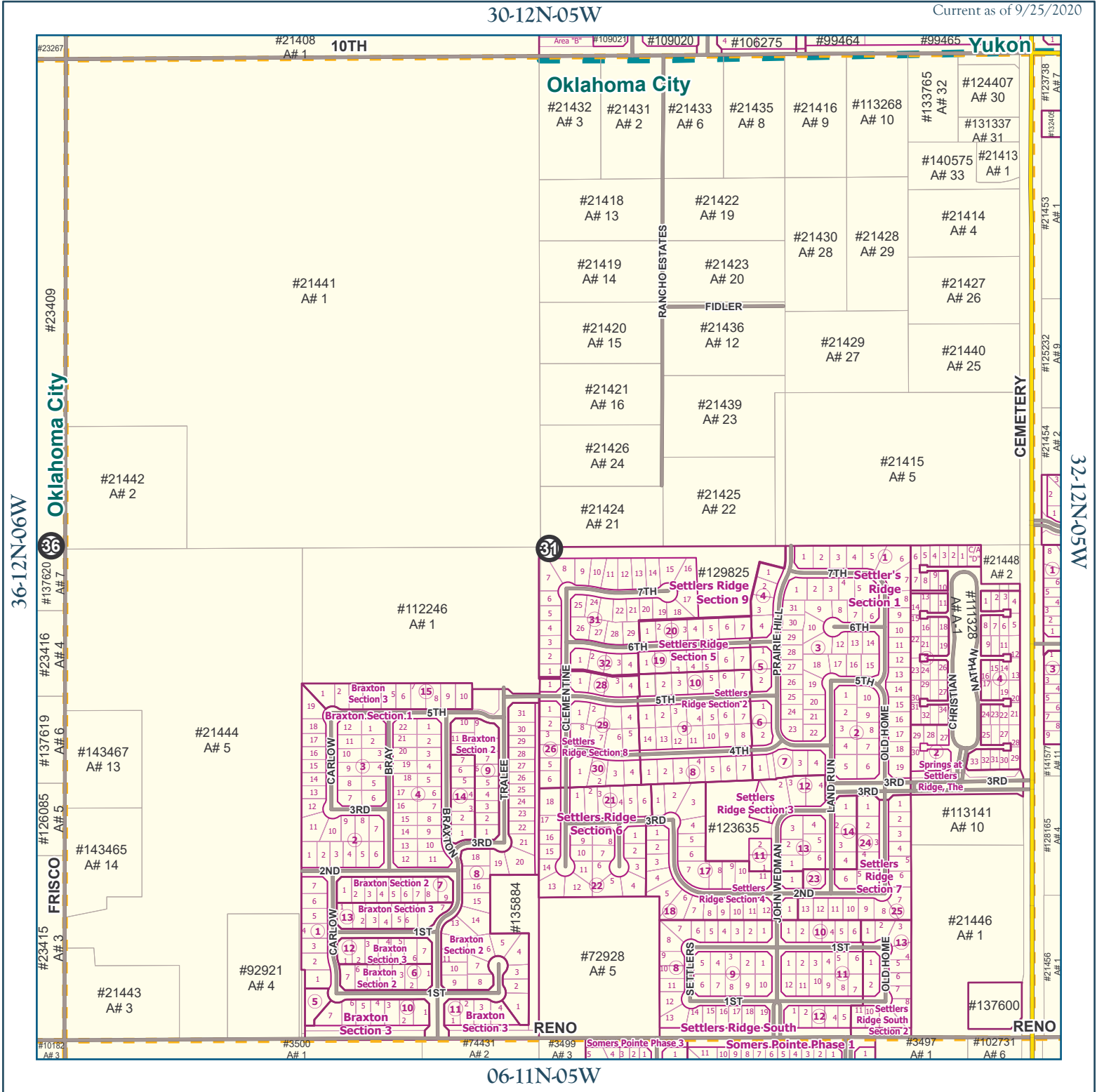
Section 31 12N-05W

Oklahoma City



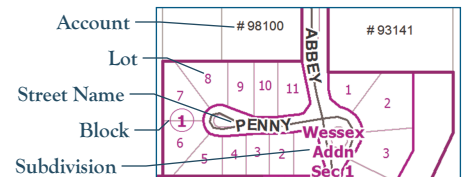
30-12N-05W

Current as of 9/25/2020



- Interstates
- Turnpikes
- U.S. and State Highways

- Major Roads
- Minor Roads
- Railroads
- City Limits



This map/data was created and assembled by the Canadian County Assessor's Office for your informational, planning reference and guidance only. None of these materials should be utilized by you or other parties without the benefit of advice and instruction from appropriate professional services. These materials are not verified by a Registered Professional Land Surveyor for the State of Oklahoma and are not intended to be used as such. Canadian County makes no warranty, express or implied, related to the accuracy or content of these materials and map/data.