

SEP Readiness Brief – Alamo Defense Labs

Supporting the U.S. Army Soldier Enhancement Program (SEP)

Date: September 2025

Alamo Defense Labs
18838 FM 2252, Building 600
San Antonio, TX
Phone: 210-446-8138
Email: paul@alamobrass.com



1. Executive Summary

Alamo Defense Labs is committed to bridging innovative defense solutions with rapid Army adoption. Our flagship solution, the Kikimora rifle platform (Galil ACE 2 chambered in 8.6 Blackout), together with partner ammunition (Fort Scott Munitions) and in-house testing, offers a commercially available, cost-effective, and operationally relevant technology. This aligns with the Army SEP's 'buy, try, decide' model.

2. The Capability Gap

Current dismounted Soldiers require increased lethality and effective terminal performance without excessive recoil or weight burden. While 5.56 NATO is widely available, it has limitations in terminal effect. 7.62 NATO provides power but adds weight and logistical load. The 8.6 Blackout offers a balanced solution, delivering superior stopping power in both CQB and mid-range engagements.

3. Our Solution – Kikimora Platform

The Kikimora platform is based on the proven Galil ACE 2, optimized for the 8.6 Blackout caliber. With an 11” barrel and compatibility with both super and subsonic loads, the system provides flexibility for suppressed and unsuppressed operations.

Key Benefits:

- Enhanced lethality with Fort Scott's 285gr solid copper spun ammunition (Tumble-Upon-Impact design)
- Reduced signature and optimized suppressor integration
- COTS-ready with existing commercial supply chains
- Adaptable to dismounted Soldier mission profiles

4. Testing & Validation

Alamo Defense Labs provides in-house ballistic gel block testing and body armor evaluation. Partner data from Fort Scott Munitions validates the ballistic performance of 8.6 Blackout ammunition. Future field trials and SEP evaluations are proposed to further validate performance in operational environments.

5. SEP Alignment

- COTS / NDI Status: Off-the-shelf rifle platform and ammunition are commercially available
- Low Risk: Built on established manufacturing bases and logistics channels
- Cost-Effective: No new production infrastructure required
- High Payoff: Improved lethality, adaptability, and reduced Soldier burden

6. Implementation Path

Alamo Defense Labs proposes a 30–60 day limited evaluation of the Kikimora system under the SEP program. Commercial scalability ensures production and delivery can expand rapidly following successful trials. We seek engagement with PEO Soldier to initiate evaluation and feedback.

7. Company Profile

Alamo Defense Labs is based in San Antonio, Texas, and specializes in ammunition development, weapon systems integration, and Soldier-focused defense research. We maintain strong partnerships with ammunition manufacturers, provide independent testing facilities, and are committed to rapidly fielding innovative technologies for U.S. defense.

Appendices



RIFLE AMMUNITION

8.6 BLACKOUT 285GR TUMBLE UPON IMPACT® SUB-MUNITION



HUNTING



MATCH GRADE



DEFENSE

BARRIER BLIND®

BARRIER BLIND®

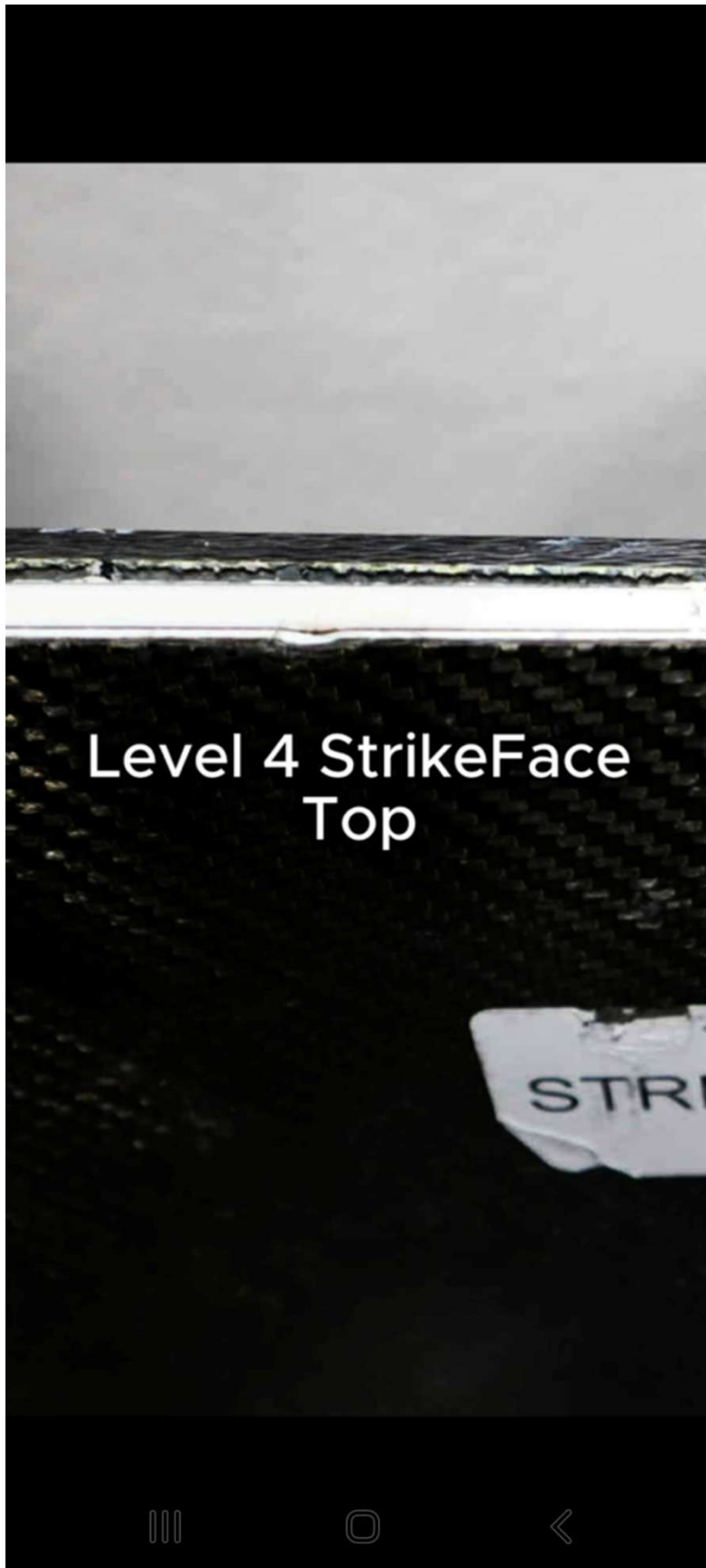
	CALIBER	8.6 BLACKOUT TUI® SUB
	CARTRIDGE ID	86BLK-285-SCV2SS
	CARTRIDGE UPC	758381722393
	PROJECTILE ID	.338-285-SCP2
	PROJECTILE UPC	758381722324
	BULLET TYPE	SOLID COPPER SPUN SCS®
	BULLET WEIGHT	285GR
	OAL	1.965"
	COAL	2.800"
	PRIMER	LARGE RIFLE
	TEST BARREL LENGTH AND TWIST	12" 1:3"
	TEST BARREL VELOCITY	1056 FPS
	BALLISTIC COEFFICIENT	.700
	BOX QUANTITY	20 ROUNDS
	CASE QUANTITY	10 BOXES / 200 ROUNDS

US FEDERAL PATENT# 9541362 US FEDERAL PATENT# 9746296

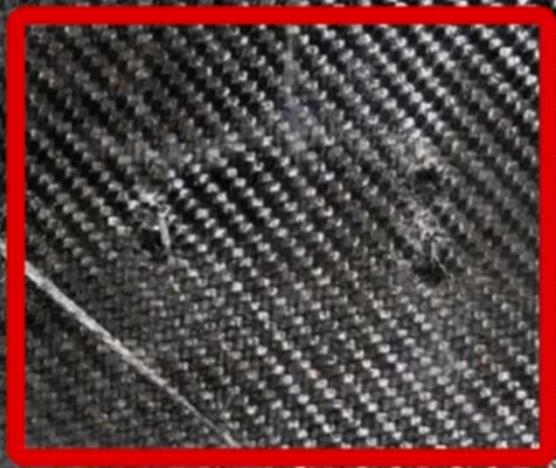
* Components subject to change to maintain quality assurance standards and consistency.

Level 4 StrikeFace Top





Level 4 StrikeFace
Front



**Level 4 StrikeFace
Back**

