

COMPASS

PHOENIX RELOCATION GUIDE

EVERYTHING YOU NEED TO KNOW BEFORE MOVING



[SCOTTSDALEPROPERTYGUIDE.COM](https://scottsdalepropertyguide.com)

hey there. NICE TO MEET YOU!

SO YOU'RE THINKING OF BUYING YOUR
FIRST HOME?

Hi There! We're Scott and Eliza, your
father/daughter real estate team with over
30 years of experience - with a personalized
touch to each home buyer and seller.

We shine when partnering strategy and
your specific home buying needs to come
alongside you as you're buying your first
home, expanding for a growing family, or
downsizing.

Let's find your perfect Phoenix home and
start this exciting new chapter! Ready to
begin? Here are some great details for your
consideration of Phoenix, and we are
delighted with the opportunity to work with
you!





Welcome to Phoenix

THE VALLEY OF THE SUN: WHERE URBAN ENERGY MEETS DESERT BEAUTY

Phoenix, Arizona, is a dynamic city known for its stunning Sonoran Desert scenery, vibrant culture, and booming economy. As the fifth-largest city in the U.S., Phoenix offers a unique mix of Southwestern charm and modern metropolitan living.

This city blends history with innovation, from the historic charm of the Roosevelt Row Arts District to the luxury shopping and dining in the Biltmore area. Outdoor enthusiasts can explore Camelback Mountain, South Mountain Park, and the Desert Botanical Garden, while sports fans can cheer for the Phoenix Suns, Arizona Cardinals, and Arizona Diamondbacks.

Beyond recreation, Phoenix is a hub for industries like healthcare, technology, aerospace, and finance. Communities such as Arcadia, Ahwatukee, and Desert Ridge provide a range of housing options, from family-friendly suburbs to stylish urban condos. Excellent schools, top-tier universities, and year-round sunshine make Phoenix an attractive destination for families, young professionals, and retirees alike.

With its growing job market, outdoor lifestyle, and welcoming community, Phoenix is one of the most desirable cities to live in the Southwest. Whether you're seeking new opportunities, a warm climate, or an exciting change of pace, Phoenix has something for everyone.

Phoenix's Housing Market

HOME PRICES, RENTAL RATES, AND NEIGHBORHOOD CHOICES



MEDIAN HOME SALE PRICE:

\$450,000 (as of early 2024)

Higher-Priced Areas:

- Arcadia: \$1.5 million+
- Paradise Valley: \$2.5 million+
- Biltmore Estates: \$1.2 million+

More Affordable Areas:

- North Mountain Village: \$400,000+
- Laveen: \$375,000+
- Maryvale: \$350,000+

***Note that these median figures vary based on factors such as square footage, lot size, amenities, age, and renovations.

RENTAL RATES

For renters, a general range for a one-bedroom apartment is \$1,500-\$2,800+ per month, while two-bedroom units typically range \$2,200-\$3,800+. Rental prices fluctuate based on unit size, amenities, and location.

One-Bedroom Apartments:

- Downtown Phoenix: \$2,000 - \$3,200
- Arcadia: \$1,800 - \$2,800
- Central Phoenix (Midtown/Uptown): \$1,500 - \$2,500

Two-Bedroom Apartments:

- Biltmore Area: \$2,500 - \$3,800
- Desert Ridge: \$2,400 - \$3,600
- North Phoenix: \$2,200 - \$3,500

Popular Residential Areas

THERE ARE SO MANY GREAT AREAS TO LIVE

- **DOWNTOWN PHOENIX**
Central Phoenix , average home \$600K, population 20,000.
- **ARCADIA**
5-10 miles east of Downtown, average home \$1.5M+, population 10,000.
- **PARADISE VALLEY**
10-15 miles northeast of Downtown, average home \$2.5M+, population 15,000.
- **BILTMORE AREA**
5-7 miles northeast of Downtown, average home \$1.2M, population 6,000.
- **DESERT RIDGE**
15-20 miles north of Downtown, average home \$750K, population 17,000.
- **NORTH PHOENIX**
20-25 miles north of Downtown, average home \$550K, population 130,000.

We would love the opportunity to help guide you through the housing market, help you find the perfect neighborhoods and homes for your lifestyle, and represent your best interests in every step of the process.



Employment Opportunities

MAJOR INDUSTRIES AND TOP EMPLOYERS

01.

HEALTHCARE:

Banner Health, Dignity Health, Mayo Clinic

02.

MUSIC/ENTERTAINMENT:

Live Nation Entertainment, iHeartMedia Phoenix, Arizona Opera

03.

AUTOMOTIVE:

Carvana, DriveTime Automotive Group, Discount Tire

04.

HIGHER EDUCATION:

Arizona State University, Phoenix Union High School District

05.

TOURISM:

Arizona Grand Resort & Spa, The Phoenician, JW Marriott Phoenix Desert Ridge Resort

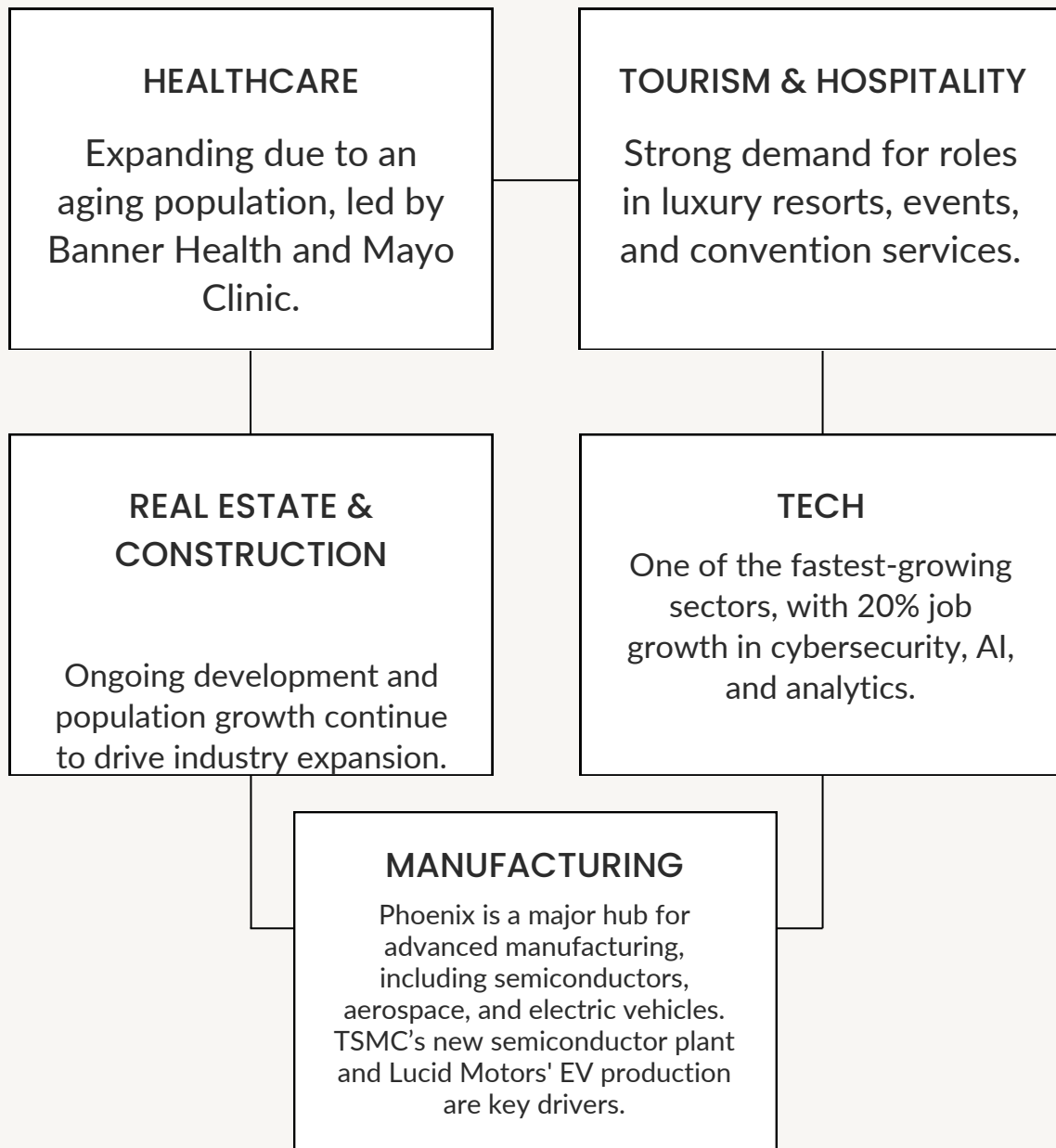
06.

FINANCE/BANKING:

Charles Schwab, Wells Fargo, Bank of America

Job Market Outlook and Growth Areas

THRIVING JOB MARKET AND KEY GROWTH SECTORS



RESOURCES FOR JOB SEEKERS

ARIZONA@WORK – Maricopa County – Job search, training, career counseling.

City of Phoenix Career Services – Resume help, job listings.

Greater Phoenix Economic Council Job Board – Local job opportunities and business resources.



Phoenix Cost of Living

AFFORDABLE COST OF LIVING: WHAT TO EXPECT

Overall, Phoenix residents can expect living costs to be about 2-4% below the national average, depending on household makeup and lifestyle preferences.

BREAKDOWN OF TYPICAL EXPENSES



HOUSING

About 17.5% above the national average but lower than cities like LA.



TRANSPORTATION

About 6.5% below the national average.



UTILITIES

Around 3.2% lower than the national average.



HEALTHCARE

Doctor's visit averages \$110.



GROCERIES

Roughly 4% higher than the national average.



Education in Phoenix

PHOENIX'S RICH EDUCATIONAL LANDSCAPE

OVERVIEW OF PUBLIC SCHOOL SYSTEM:

Phoenix is served by multiple districts, including Phoenix Union High School District and Paradise Valley Unified School District, educating thousands of students with a student-teacher ratio of approximately 18:1. Many schools rank among Arizona's best.

HIGHLIGHTS OF TOP-RATED SCHOOLS:

- Desert Vista High School (9/10 rating)
- BASIS Phoenix (Charter, nationally ranked)
- Madison Traditional Academy (K-8, highly rated)
- Great Hearts Academies (Classical charter schools)

PRIVATE & CHARTER SCHOOLS:

- Brophy College Preparatory (Private, all-boys, top-rated)
- Xavier College Preparatory (Private, all-girls, top-rated)
- Arizona School for the Arts (Charter, arts-focused)

HIGHER EDUCATION:

- Arizona State University (ASU) – Downtown Phoenix Campus
- Grand Canyon University (Private Christian university)
- Phoenix College (Community college with strong transfer programs)



School Zoning & Districts

FINDING THE RIGHT FIT FOR YOUR FAMILY

Phoenix is served by multiple school districts, with zoning based on home address. Families also have options for open enrollment, charter schools, and private institutions.

MAJOR SCHOOL DISTRICTS

- Phoenix Union High School District (PUHSD): Serves central Phoenix with schools like Camelback High and North High.
- Paradise Valley Unified School District (PVUSD): Covers north Phoenix with schools like Pinnacle High and Horizon High.
- Deer Valley Unified School District (DVUSD): Serves northwest Phoenix, including Sandra Day O'Connor High.

OPEN ENROLLMENT

Most districts, including PUHSD and PVUSD, offer open enrollment, allowing transfers based on availability.

CHARTER & PRIVATE SCHOOLS

- Charter: BASIS Phoenix, Great Hearts Academies
- Private: Brophy College Prep, Xavier College Prep, Arizona Lutheran Academy

If you're considering a move, we can provide detailed school zone information based on any home you're interested in. Let's find the best fit for your family!

Healthcare in Phoenix

As a major healthcare hub, Phoenix offers top-rated hospitals, specialized care, and various insurance options, ensuring residents have access to high-quality medical services.

MAJOR HOSPITALS AND HEALTHCARE FACILITIES:

- Mayo Clinic – Phoenix/Scottsdale (Ranked among the best hospitals in the nation)
- Banner – University Medical Center Phoenix
- HonorHealth John C. Lincoln Medical Center
- St. Joseph's Hospital & Medical Center (Dignity Health)
- Phoenix Children's Hospital

HEALTH INSURANCE OPTIONS AND COSTS

Most large employers offer company-sponsored health insurance. Based on recent data:

- Average individual premium: \$450–\$500/month
- Average family premium: \$1,500–\$1,700/month

Phoenix's medical community meets diverse health needs with exceptional care, offering numerous facilities, specialists, and insurance options.





Entertainment and Lifestyle

ENTERTAINMENT, DINING, AND NIGHTLIFE FUN

RESTAURANTS:

- Steak 44
- Pizzeria Bianco
- Durant's
- The Henry
- Kai Restaurant

NIGHTLIFE:

- Cobra Arcade Bar
- Bitter & Twisted
- Valley Bar
- Blue Martini Lounge
- Dierks Bentley's Whiskey Row

ENTERTAINMENT:

- Dierks Bentley's Whiskey Row
- Heard MuseumOdySea Aquarium
- Musical Instrument Museum (MIM)
- Casino Arizona & Talking Stick Resort Casino
- Phoenix Art Museum

PARKS:

- South Mountain Park & Preserve
- Papago Park
- Encanto Park
- Phoenix Mountains Preserve
- Margaret T. Hance Park

OUTDOOR ACTIVITIES:

- Camelback Mountain
- South Mountain Park & Preserve
- Salt River Tubing
- Hot Air Balloon Rides
- Golf at TPC Scottsdale

FAMILY-FRIENDLY ACTIVITIES:

- Phoenix Zoo
- Arizona Science Center
- Children's Museum of Phoenix
- OdySea Aquarium
- Enchanted Island Amusement Park

VENUES:

- Footprint Center
- State Farm Stadium
- Ak-Chin Pavilion
- The Van Buren
- Desert Diamond Arena

SPORTS:

- Phoenix Suns (NBA)
- Arizona Cardinals (NFL)
- Arizona Diamondbacks (MLB)
- Arizona Coyotes (NHL)
- Phoenix Rising FC
- Spring Training – MLB Cactus League



Annual Festivals & Events

THRIVING JOB MARKET AND KEY GROWTH SECTORS



Arizona Matsuri	●	February 22–23
February 21–22	●	Innings Festival
M3F Music Festival	●	March 7–8
March 21–23	●	Arizona Jazz Fest
Arizona Renaissance Festival	●	February 8 to March 30
April 3–13	●	Phoenix Film Festival
Phoenix Pride Festival & Parade	●	April 5–6
October 3–26	●	Arizona State Fair
Las Noches de las Luminarias	●	December 4–30



Relocation Tips

MAKE YOUR TRANSITION SMOOTH AND STRESS-FREE

Moving to a new city like Phoenix can be exciting, but proper preparation ensures a smooth and stress-free transition. Here are some key tips to help:

MOVING COMPANIES AND SERVICES:

- Muscular Moving Men & Storage
- Camelback Moving
- Just-In Time Moving & Storage
- Mentors Moving & Storage
- Poindexter Moving

SETTING UP UTILITIES AND SERVICES:

- Electric: Salt River Project (SRP)
- Gas: Southwest Gas
- Water: City of Phoenix Water Services
- Internet/Cable/Phone: Cox Communications, CenturyLink, Google Fiber

OTHER ESSENTIAL SERVICES TO SETUP:

- U.S. Postal Service: Fill out a change of address
- Driver's License and Vehicle Registration: Arizona Department of Transportation (ADOT) – MVD
- Banking: Establish accounts with local branches or credit unions

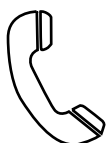
The Moving Timeline

MAKE YOUR TRANSITION SMOOTH AND STRESS-FREE



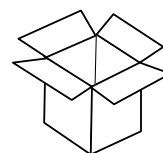
2 Months Out

Purge before packing, schedule the moving truck, finalize your moving date, and reserve a storage unit if needed



1 Month Out

Purchase moving supplies, contact services to cancel or transfer, start packing seldom-used items, and host a moving sale.



2 Weeks Out

Submit a postal change of address, ensure all repairs are completed, gather financial and legal documents, and keep packing.



After the Move

Unpack, organize, take inventory to ensure nothing is missing, confirm your new address with all services, and enjoy your new home!



Moving Day

Ensure movers know of any special instructions, complete a final clean and walk-through to ensure nothing is left behind, and enjoy your move!



1-7 Days Out

Continue packing, confirm the movers, prepare an essentials box, pack outdoor furniture, and ready suitcases for the first few days.



Vendor Recommendations

INSURANCE

STATE FARM – JIM DIPOLITO

(602) 265-4411

www.statefarm.com/agent/US/AZ/P

hoenix/Jim-Dipolito

jim@jimdipolito.com

HOME WARRANTY

AMERICAN HOME SHIELD

(888) 682-1043

www.ahs.com

info@ahs.com

CONTRACTOR

ACE HOME SERVICES

(602) 943-2000

www.acehomeaz.com

info@acehomeaz.com

ELECTRICIAN

TURN IT ON ELECTRIC

(602) 453-4288

www.turnitonelectric.com

info@turnitonelectric.com

MOVING COMPANY

MUSCULAR MOVING MEN & STORAGE

(602) 923-6400

muscularmovingmen.com

info@muscularmovingmen.com

FLOORING

EXPRESS FLOORING

(602) 864-3300

www.expressflooring.com

info@expressflooring.com

PLUMBER

BENJAMIN FRANKLIN PLUMBING

(602) 282-5007

www.benfranklinplumbing.com/phoenix

info@benfranklinplumbing.com

PEST CONTROL

BULWARK EXTERMINATING

(480) 969-7474

bulwarkpestcontrol.com/phoenix-az

info@bulwarkpest.com

LANDSCAPING

AZ LANDSCAPE CREATIONS

(480) 626-4220

azlandscapecreations.com

info@azlandscapecreations.com

APPLIANCE REPAIR

APPLIANCE WORKS

(480) 596-2222

applianceworksaz.com

service@applianceworksaz.com

CARPET CLEANING

PHOENIX CARPET REPAIR & CLEANING

(602) 688-4186

phoenixcarpetrepair.com

info@phoenixcarpetrepair.com

WINDOWS

KRASIVA WINDOWS AND DOORS

(602) 780-3312

krasivawindows.com

info@krasivawindows.com

HOME INSPECTOR

CHECKLIST INSPECTIONS

(480) 361-8120

checklistaz.com

info@checklistaz.com



THANK YOU !

We hope this guide has equipped you with valuable insights for your Phoenix relocation. As a seasoned team with passion and drive, we are excited for your next adventure and treasure the opportunity!

Scott Kiburz

ASSOCIATE BROKER



602.803.1236



scottkiburz@gmail.com

Eliza Kiburz Meath

YOUR LOCAL REALTOR®



602.803.9049



eliza@azlivingre.com

COMPASS