

Subject: NUDURA ICF --The future of Guam

To Ben Servino,

and

Families of Guam, Homeowners, Architects, Engineers, Developers, Contractors, Journeymen, Students, Investors, Distributors, Business Owners, Government Officials, Elders and Veterans

(Please forward to all)

Today is April 12, 2026. I wanted to thank you Ben Servino for talking the time to talk with me as you and your wife prepare along with 200,000 residents on the island of Guam. Tropical storm Sinlaku was elevated to a Category 3 Typhoon with potential winds of 120 mph hitting on Monday or Tuesday.

Brandon Aydlett from The Guam Daily Post said

“With that type of intensity storm, there’s gonna be a significant growing concern for non-concrete structures, poorly constructed structures of wood, tin, and just anything that’s really exposed and vulnerable to strong winds,”

Hello everyone,

My name is Mark Adams and I am the US Pacific Northwest NUDURA ICF (insulated concrete form) Technical Sales Representative. I have something to share with all the citizens of Guam. Something that will change your way of life and the way you and your family have to react to an article like the one above Brandon wrote on April 10th, 2026,. Or the announcement you heard over TV and radio from Governor Lou Leon Guerrero declaring Guam in a State of Emergency at 5:30pm an hour before night fall. How many of you are worried about your safety, your family, your home in situations like this? What if I told you there is a simple, cost effective, time saving, long term, energy efficient, multi beneficial solution when building your next home, business, hospital, school, church, multi-family and more. By building a NUDURA ICF structure.

Before I explain what a NUDURA ICF structure is. Let me show you this quick video to see how a NUDURA Home withstands a Category 5 Hurricane with 155 mph winds.

[Watch on](#)

I will be in Guam on Wednesday, April 29th - Monday, May 4th for product presentations and demonstrations. You can see the schedules and sign up at <https://guambuilt.com>. Any questions about classroom reservations please contact:

Kirsten Raye at 907 690 3311 (Alaska time zone) or support@streamak.com

For personalized presentations, meetings or demonstrations please contact

Ed Beddow at 907 252 3874 (Alaska Time Zone) or ededdow56@gmail.com

Mark Adams at 564 250 1910 (Pacific Std Time) or madams@tremcoinc.com

Let me tell you more...

NUDURA ICF (insulated concrete forms) are a stay-in-place blocks with each side containing an EPS (Expanded polystyrene) foam panel connected together with a hinged web. The form is 18" high and 8' long and covers 12 s/f of wall space along with premanufactured corners. Wall core sizes are available in 4", 6", 8", 10" and 12". The blocks are stacked, reinforced, and filled with concrete to form exterior/ or interior walls of a building.

NUDURA ICF construction is an alternative to conventionally formed concrete wall, standard wood or steel framing and concrete blocks (CMU's) Not only do NUDURA ICF walls offer robust structural integrity, but they also provide impressive energy efficiency and interior comfort. NUDURA ICF can be installed below grade for basements and foundations as well as above grade for multi-story buildings all the way to the roof.

The NUDURA DECK roof consists of 2' foam panels with a steel or wood ribbed system that can span up to 50 Ft. This system is designed to be installed with little to no waste to complete a quiet and energy efficient home, with lower energy cost.

NUDURA is able to be put together in the fraction of the time a stick build home goes up. Our forms have a patented hinge to allow them to fold down to maximize shipping and storage. Easy to install with only a few parts compared to hundreds if not thousand in a wood stick build.

This is just an introduction of NUDURA ICF . Below are some more details. Are basic knowledge classes are an average of 1 hr long. After the class you will understand the product, the accessories, how to use NUDURA, and the benefits.

Additional classes will be available for Architects, Engineers, and the construction field. These classes we will go into more detail for each trade. For more technical information on NUDURA go online to www.nudura.com for engineered specifications , rebar placement, Architectural details, BIM file drawings compatible with AutoCAD Revit. NUDURA warranties their product and offers extended warranties when other Tremco CPG products are used (more details later) With your commitment , NUDURA wants to train native and local contractors and will provide trainers to help start you out

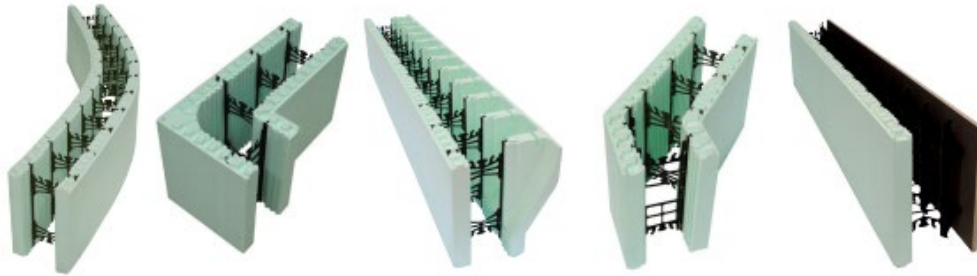
with multiple container orders (10+), larger builds or tract housing projects and provide additional support as needed.

Attached above are a couple of NUDURA brochures and product catalogue. Below are some highlights, benefits and more details on NUDURA and NUDURA DECK. For more information, please visit www.nudura.com. If you have any questions or would like more information prior to the classes, please email Mark Adams (contact info below) your questions , concerns and comments.

Sign up for classes at <https://guambuilt.com>



Over 50 years of building experience.



By using Nudura Insulated Concrete Forms to build your next structure you can ensure you are choosing the best building solution available today.

NUDURA® ICF SERIES

Insulated Concrete Forms (ICF) built for unmatched design flexibility and sustainability



Product Overview

Engineered for efficiency, the Nudura ICF Series combines formwork, framing, insulation, and a vapor barrier into one simple step. Built from high-density Expanded Polystyrene (EPS) foam and durable polypropylene plastic webs, these forms create a robust flat wall system when filled with reinforced concrete. This innovative approach simplifies installation, reduces on-site waste, and accelerates your project timelines.

Features & Benefits

- ✓ Superior insulation and energy efficiency reduces utility bills by up to 60%
- ✓ Offers significant sound reduction from external sources, ensuring a quieter indoor space
- ✓ Enhances building durability with up to four hours of fire resistance
- ✓ Built to withstand winds up to 250 mph (402 km/h) and resist impact from flying debris



Benefits of using NUDURA ICF

BENEFITS FOR EVERYONE

Insulated Concrete Forms (ICF)



HOMEOWNER



- Maximum energy efficiency - Can help improve energy efficiency of your home by up to **58%***
- Safety for your family - high fire resistance rating of **4+ hours** (Minimum 6" [152 mm] concrete core)
- Long-term value - greater durability and requires less maintenance and repairs over its lifetime compared to traditional builds
- **Eco-friendly**, product contains recycled materials
- Greater **home comfort & sound resistance** - even temperatures and reduced drafts and cold spots & acts as a sound barrier by dampening sound vibrations from unwanted outside noise
- Disaster Resilience - designed to withstand some of Mother Nature's worst with high impact resistance that withstands winds of up to **402kph (250mph)**
- 'Protects against rot, corrosion, mold, mildew, termites**', and rodents'

BUILDER/CONTRACTOR



- **DURAMAX Technology®** - Faster installation times, less waste and a reduced amount of seams - the industry's only 8 foot [2.43M] standard block allowing the placement of 12 square feet [1.11m²] of wall area in one building step
- **DURALOCK Technology®** - embedded web/ fastening strips that run the full 18 inch [457 mm] height of each and every form, ensuring the ICFs do not compress during concrete placement
- Nudura **Training Academy** - Industry leading installation training courses provide basic Nudura ICF installation skills
- **4-Way Reversible System** - patented foam interlock allows the form to be 4 way reversible - eliminates left and right corners which allow Nudura ICF Forms to be used in twice as many scenarios as non-reversible forms
- Authorized **Distributor Network** worldwide that can provide you with assistance from concept to completion of installation
- **Support** - Nudura aligns itself with the best companies in local geographic areas to provide extensive technical support and service

ARCHITECT/DESIGNER



- **Net-Zero** - achieve Net-Zero by using Nudura ICFs as one of your key design elements for the building envelop
- Design tools at your finger tips - find **BIM**, Revit, DWG and other files all in the resource center of nudura.com
- Continuing Education Programs - Nudura is a registered provider for **AIA learning units**
- **LEED** - specifying the Nudura Insulated Concrete Forms for green building can provide potential contributions to various credit categories
- Meet and exceed **IBC Energy Code** requirements for exterior walls with an effective "Continuous Insulation" value of R22+ with the standard Nudura Wall System

DISTRIBUTOR



- **DURAFOLD Technology®** - ships flat, allowing for 40% more product on a truck compared to other ICF Form products
- **3** manufacturing plants located in Quebec, Alberta and Georgia serving all areas of North America, as well as Europe
- **4** product series and various accessories to cover all of your building needs
- **Quality Assurance** - forms are manufactured in house to allow full control over the manufacturing process, ensuring our forms are manufactured to the highest standard

*As proven by third party testing conducted by CLEB Laboratories and the Insulating Concrete Forms Manufacturers Association (ICFMA)

** Based on employing preventol or membrane methods



GREEN BUILDING

- High performance up to **R-50** value* possible
- Building Code Compliant
- Contributes greatly to a high level of LEED points
- Can help improve the energy efficiency of your structure by up to **58%***
- Does not emit CFCs or HCFCs thereby improving indoor air quality
- Does not off-gas
- 4-Way Reversible system reduces on-site waste
- **100%** recyclable



DURABILITY AND SUPERIOR STRENGTH

- High fire resistance rating of **4+ hours** (Minimum 6" [152 mm] concrete core)
- Stable and permanent efficient performance
- Will not decompose or decay
- Protects against rot, corrosion, termites** and mold
- Durable concrete construction
- Withstands winds of up to **402kph (250mph)**
- Impact resistance
- Provides superior protection against hurricanes, tornadoes and seismic events
- Up to **30%** higher compressive strength



QUALITY OF LIFE

- High thermal mass - **No** thermal transfer or air leakage
- Dampens sound vibrations from unwanted outside noise
- No cavity walls for mold, mildew, or rodents
- Peace of mind during severe and inclement weather or seismic events
- **No** toxic or off-gassing materials



COST EFFICIENT

- Cut energy cost up to **58%*****
- Higher ROI
- Lower capacity HVAC system requirements
- Up to **25%** lower insurance cost****



CONSTRUCTION EFFICIENCY

- **25-50%** faster construction
- No special engineering needed
- Uses less skilled labor force
- Various finished can be installed directly on the ICF
- Easy to route wire and water pipes through ICF
- Cost savings of **23%** compared to traditional methods possible
- High modularity, versatility and flexibility in design
- Construction under severe weather conditions is easier with ICF vs. other systems
- Eliminates stripping, form cleaning, insulating and furring steps

* Based on thermal mass performance & 6" inserts

** Based on employing preventol or membrane methods

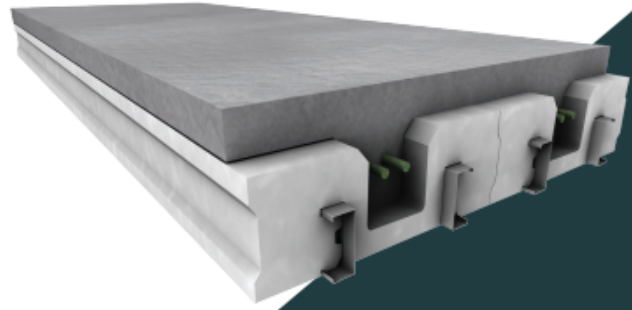
*** As proven by third party testing conducted by CLEB Laboratories and the Insulating Concrete Forms Manufacturers Association (ICFMA)

**** Based on concrete home quotes

This is NUDURA DECK and roofing.



Nudura Deck SRS



**Insulated Steel Rib System
for Elevated Concrete**

Product Overview

Transform your construction projects with Nudura Deck SRS, the advanced insulating formwork for elevated concrete floors, roofs and decks. Engineered for versatility, it offers customizable lengths and supports expansive clear spans of up to 50' (15.24 M), making it the ideal solution for both efficiency and performance.

Enjoy the peace and quiet of solid concrete construction without the weight and complexity. Nudura Deck provides a lightweight, versatile and sound-dampening alternative to traditional methods. It creates remarkably quiet, secure and energy-efficient structures, making it the premier choice for homes, commercial buildings and storm shelters.

Build stronger, quieter and more sustainable spaces with Nudura Deck SRS.



Features & Benefits Checklist

- ✓ **Quiet, Efficient Floors & Roofs:** Construct exceptionally quiet and comfortable concrete floors and roofs, perfect for pairing with energy-efficient in-floor heating systems.
- ✓ **Expanded Living Space:** Create economical, post-free living areas under garages for a comfortable, moisture-free space with limitless design options.
- ✓ **Versatile Porch Caps:** Convert the space under your front porch into a low-cost safe room or extra storage area.
- ✓ **Durable, Maintenance-Free Decks:** Build a sustainable outdoor living space that supports heavy loads like hot tubs and snow, without the worry of rot, mold or staining.

Nudura Deck | SRS (Steel Rib System)

Advantages



Storm Resistance

Nudura Deck's reinforced concrete system is FEMA-recognized as a protective shield against severe weather.



Sound Control

Nudura Deck provides exceptional sound isolation with an STC of 53, making spaces quieter while reducing labor costs and saving owners money.



R-Value

Nudura Deck's concrete structures, with R-Values of 26-50, offer superior insulation and outperform wood or steel in adapting to climate changes.



Strength

The bonded concrete assembly withstands nature's strongest forces and supports heavy loads like hot tubs and fully loaded pickup trucks.



Look forward to meeting everyone

Thank you,

Mark Adams

Technical Sales Representative
Pacific Northwest Region and Alaska
Tremco CPG Inc.

M. 564.250.1910

MAadams@tremcoinc.com

www.nudura.com



Part of Tremco Construction Products Group

Need building enclosure education?

We offer so many options!

This e-mail (including all attachments) may be confidential, has a professional character, may be attorney-client privileged and is intended solely for the use of the intended recipient(s). If you are not the intended recipient and you have received this e-mail in error then any use, dissemination, forwarding, printing or copying of this e-mail is strictly prohibited, may be unlawful and you should contact the sender by return e-mail and then delete all copies in your possession. Any views or opinions presented are solely those of the author and do not necessarily represent those of the individual or entity to whom or which it is addressed or from whom or which it is sent. This e-mail may form part of a legally binding agreement. E-mail messages may contain computer viruses or other defects, we have taken precautions to minimize the risk of transmitting software viruses, but we advise that you carry out your own checks on any attachments to this message. We make no warranties in relation to any loss or damage caused by software viruses or other defects.