

### #1 Stanwood I.O.O.F. Public Hall • 1902

The Floyd Norgaard Cultural Center is on the National Register of Historic Places. It was restored in 2003 by the Stanwood Area Historical Society to host music, arts, cultural and family events, as it once did in the early 1900s. [www.sahs-fncc.org](http://www.sahs-fncc.org)

### #2 Camano Lutheran Church • 1906

Established in 1890 in Utsalady. In 1895 services were held at the Livingston Bay school, which was located across the road. It was moved to this site and is now Pioneer Hall. Construction of this church began in 1904 and the dedication was July 9, 1906. Listed on the WA Heritage Register.

[www.camanolutheranchurch.org](http://www.camanolutheranchurch.org)

### #3 Camano Lutheran Cemetery • 1921

Camano Lutheran Church purchased this land on May 2, 1921 for \$125. Records of burials begin as early as 1909. Most Camano Island pioneer families are represented at this cemetery. All are welcome here to reflect on the lives of those who shared this island before us.

### #4 Kristoferson Farm • 1912

The barn was built in 1914 from Douglas Fir milled on site. Kristoferson Barn has been the hub of farm operations for the Kristoferson family for over 100 years. Listed on the National Register of Historic Places in 2012. [www.kristofersonfarm.com](http://www.kristofersonfarm.com)

### #5 Barnum Point

This unspoiled beach is as wild as it was a hundred years ago. Work is going on to make more and more of it available to the public.

### #6 South Camano Grange • 1930

South Camano Grange #930 was organized Jan. 18, 1930 by O.C. Wisner. It is a family-friendly organization that promotes family values. Service to the community is the backbone of the Grange.

### #7 Camano Island State Park • 1949

A community initiated and supported park. In 1949 ninety two acres of land was acquired for a park. The initial development was accomplished in one day by nearly 500 public spirited volunteers from Stanwood and Camano.

[www.parks.state.wa.us/484/Camano\\_Island](http://www.parks.state.wa.us/484/Camano_Island)

### #8 Cama Beach Historical State Park • 1934

Cama Beach a 1930s-era fishing resort complete with waterfront cedar cabins and bungalows. Muriel and Lee Risk operated Cama Beach Resort for 55 years. In 1990 the Risk daughters acted to turn the property into a state park. Listed on the National Register of Historic Places in 2001.

[www.parks.state.wa.us/483/Cama-Beach](http://www.parks.state.wa.us/483/Cama-Beach)

## Washington's Beautiful CAMANO ISLAND HISTORIC SITES

[HistoricSitesTour.com](http://HistoricSitesTour.com)

### #9 Camano City Schoolhouse • 1906

Built in 1906 this one room schoolhouse served students of the rapidly growing mill town of Camano City. It was used as a school until 1936. Then it served as a community hall, home to the Fire Department and Sparklers auxiliary. Sold in 2012 to the Camano Schoolhouse Foundation. Listed on the WA Heritage Register 2014.

[www.camanoschoolhouse.com](http://www.camanoschoolhouse.com)

### #10 American Legion Post 207 • 1949

The Camano Island American Legion was founded in 1949. According to members, they met in the South Camano Grange Hall for a time prior to purchasing the "old mattress factory" on the Camano City Road north of Camp Pleasant.

### #11 Utsalady Historic Vista Point

Ship spars were first cut here in 1853. A lumber mill was built in 1856, beginning production in 1857. The town boomed with Camano's first school. Lumber was exported in 1860. By 1893 sailing ships carried daily production of 74,000 bd/ft to world markets.

[www.islandcountywa.gov/parks & trails](http://www.islandcountywa.gov/parks%20and%20trails)

### #12 Utsalady Ladies Aid • 1908

Utsalady Ladies Aid was founded in 1908. It is the second oldest organization in Island County. The building was constructed in 1923 for \$566.73. It is a symbol of community spirit and unity for those living on Camano Island. Listed on the WA Heritage & National Registers of Historic Places since 1998.

[www.facebook.com/Utsalady-Ladies\\_Aid](http://www.facebook.com/Utsalady-Ladies_Aid)

### #13 Camano Pioneer Cemetery

Camano Island's early settlers and some Native Americans are buried here.

### #14 English Boom

The English Logging Co. logged forests east of Stanwood and Mount Vernon in the 1920's & 30's. Here they gathered logs into booms for towing to Puget Sound mills. Pilings are all that remain from the operation which closed in 1945.

## Washington's Beautiful CAMANO ISLAND HISTORIC SITES & MAP

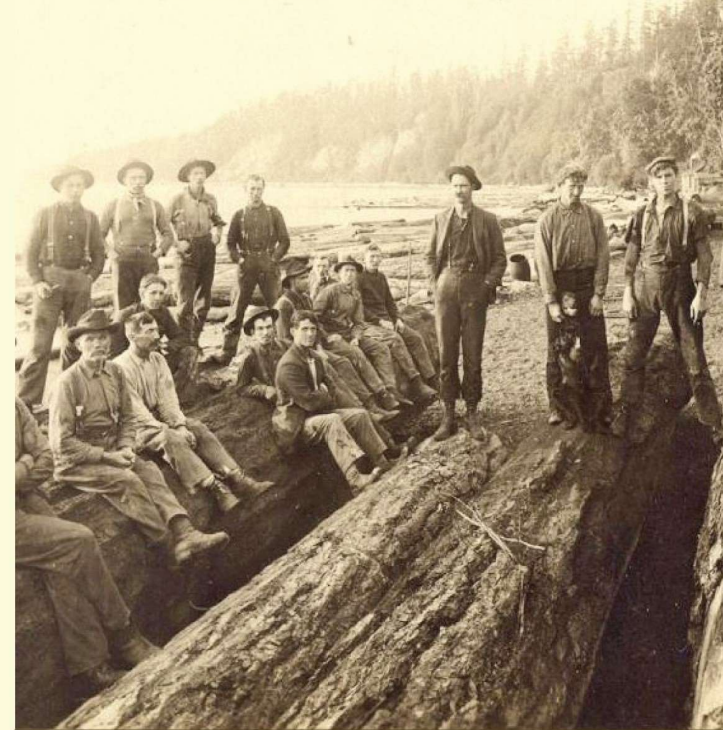


Photo Esary Camp #2 at Cama. Courtesy of Amaryliss Whitmarsh

