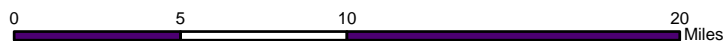
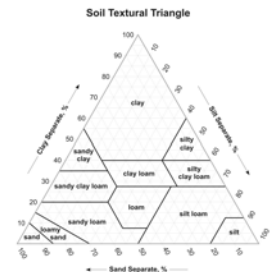
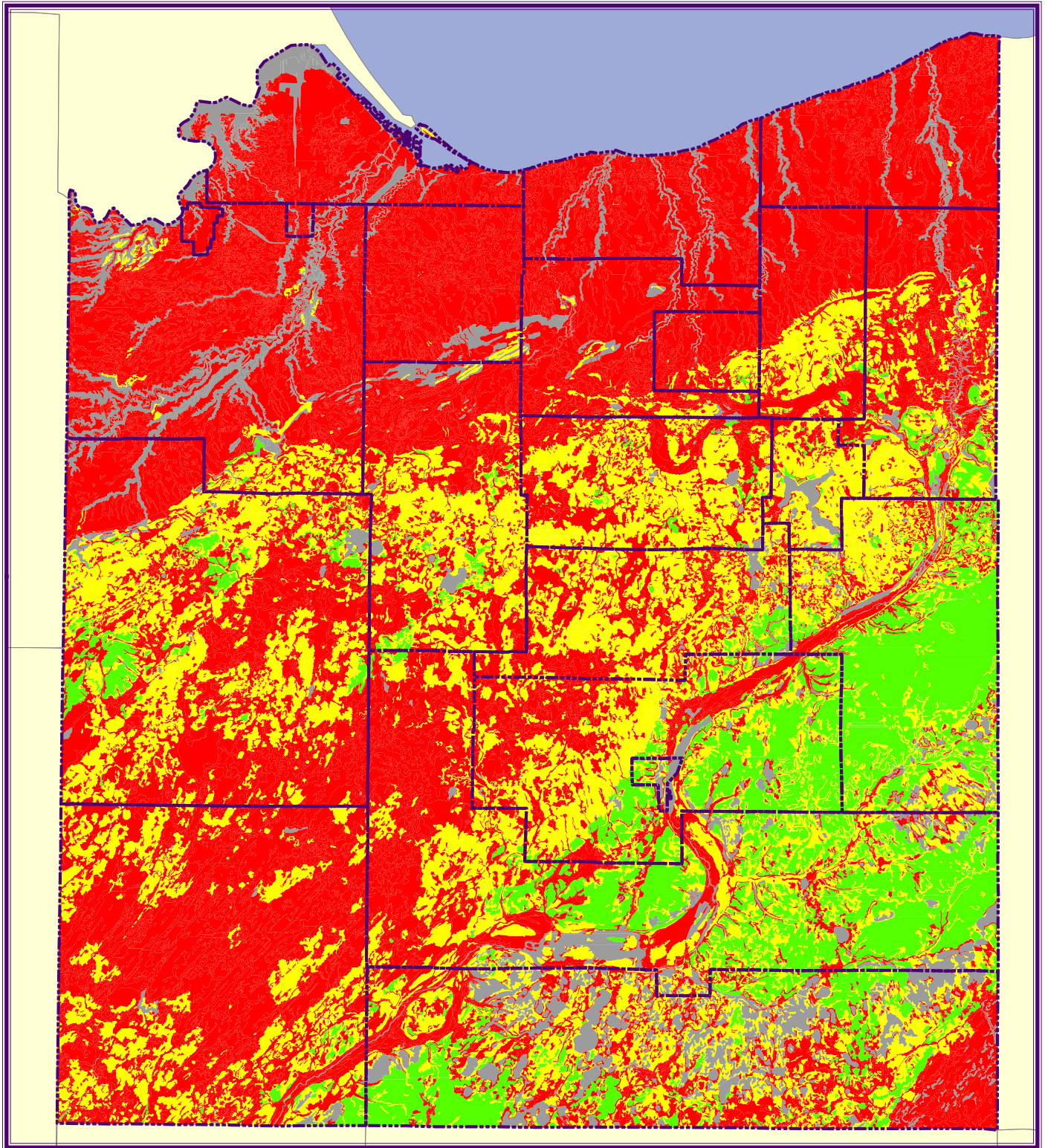


Surface Texture

- | | | |
|------------------------|------------------------|--|
| ● Channery silt loam | ● Mucky silt loam | ● Mucky peat |
| ● Silt loam | ● Sand | ● Cobbly mucky peat |
| ● Clay loam | ● Loamy sand | ● Peat |
| ● Sandy loam | ● Loamy fine sand | ● Stony muck |
| ● Fine sandy loam | ● Loamy very fine sand | ● Highly decomposed plant material |
| ● Very fine sandy loam | ● Cobbly loamy sand | ● Moderately decomposed plant material |
| ● Silty clay loam | ● Muck | ● Slightly decomposed plant material |

Soil texture data was derived from the NRCS SSURGO soil database. Soil texture refers to the relative proportion of sand, silt and clay size particles in a sample of soil. Soil scientists group soil textures into soil texture classes. A soil texture triangle is used to classify the texture class.





Soil Limitations for Dwellings with Basements

-  Not Rated
-  Not limited
-  Somewhat limited
-  Very limited

