

# Sew Enjoyable

## Easy Kimono Top



You will need :

2m fabric- a light cotton, linen, light denim. If you would like a challenge, then viscose or polyester.

A ruler

Chalk or other marking device

Scissors. Pins, Tape measure



First take your measurements.

Length from your shoulder (edge of neck) to where you want the Kimono to end- make sure the tape goes over your bust.		A
From shoulder as before to the tip of your bust		B
Around the fullest part of your bust		C
Around the fullest part of your hips		D

Take the measurement C add 6 inches) and divide by 4 =

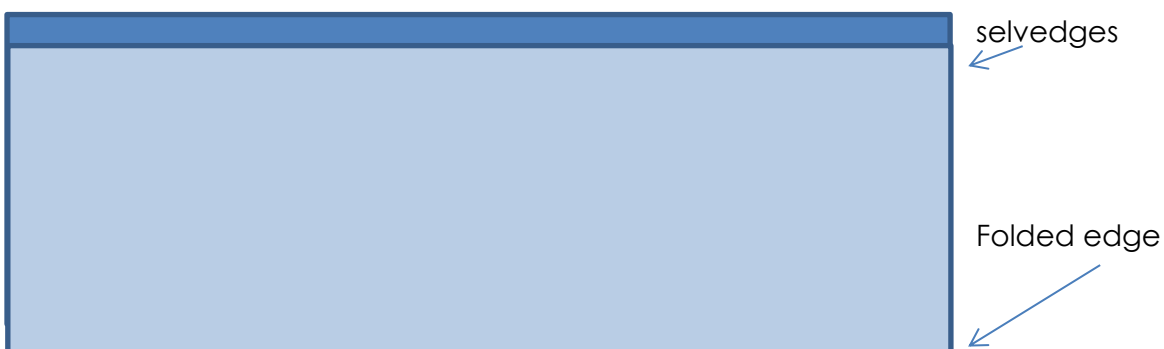
This is measurement E

Take the measurement D add 6 inches and divide by 4=

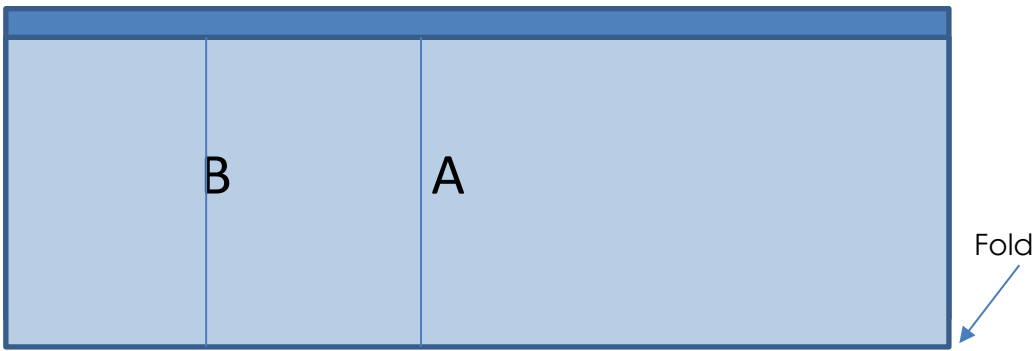
This is measurement F

Lay your fabric with the selvedge edges and the right sides together in a long strip.

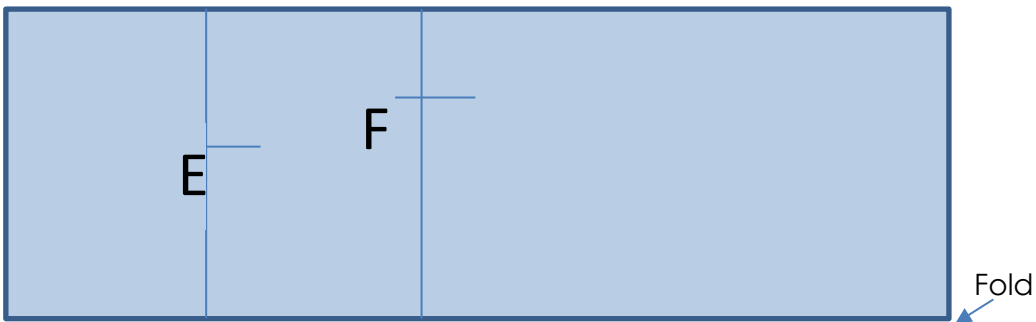
Fold your fabric in half length ways so you have the 2 selvedged edges together.



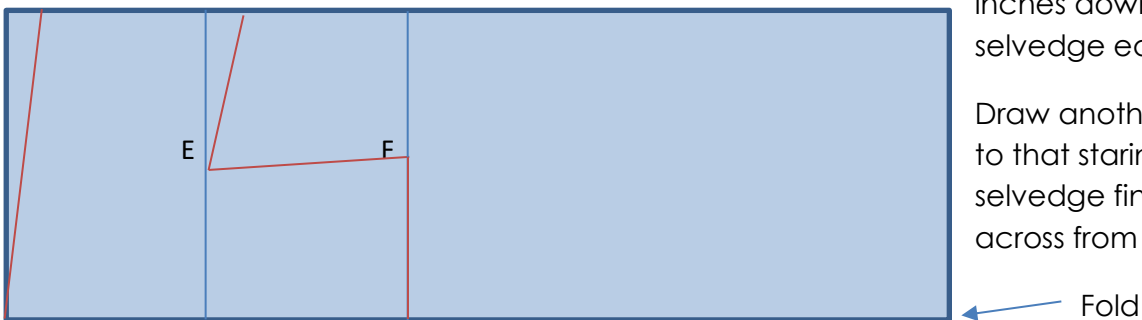
Mark measurement A and B along the folded edge and draw a line to the selvedged edges.



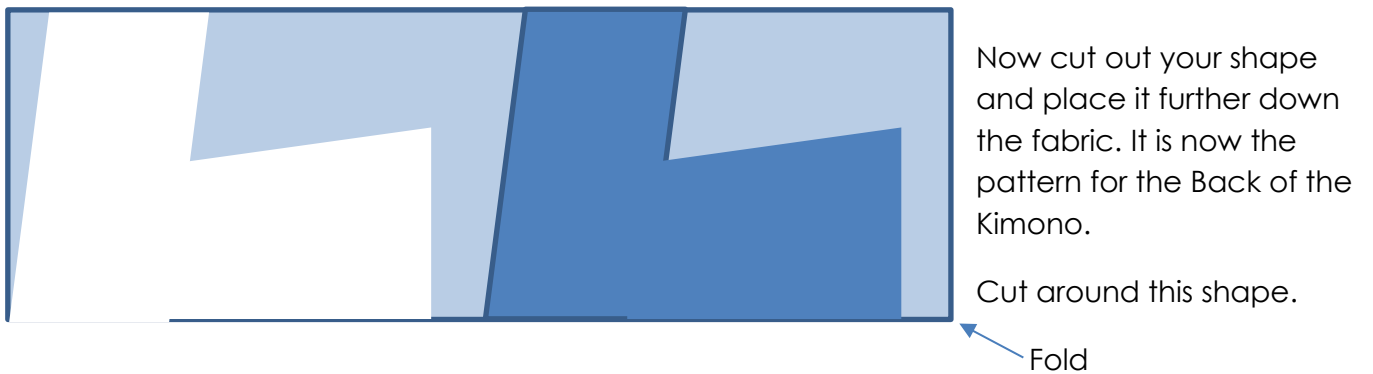
Now mark the measurement you have for E on line B starting at the folded edge and the measurement for F on line A.



Draw a line to join E to F. Then draw a line from the top folded edge to the selvedge ending 2 inches down at the selvedge edge.



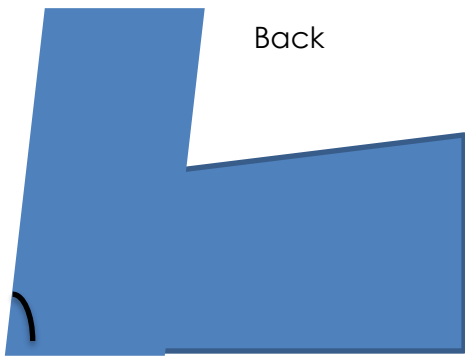
Draw another line parallel to that starting from E to the selvedge finishing 2 inches across from line B.



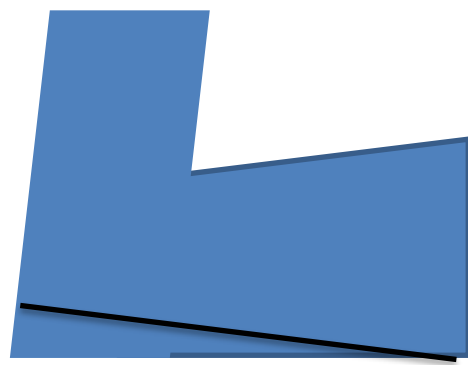
Now cut out your shape and place it further down the fabric. It is now the pattern for the Back of the Kimono.

Cut around this shape.

Now you have 2 sides cut out. One will be the front and the other will be the back



Back



Front

Fold

On the back piece, draw a curve starting about  $\frac{1}{2}$  inch from the top folded edge ending 3 inches away at the shoulder.

On the front piece, draw a line starting on the shoulder edge 3 inches from the fold and ending at the bottom of the piece. Now you have cut your front piece into 2.

Open up the back piece and place it with the good side up.

Take the 2 front pieces and place them with the **right** side facing the **right** side of the back piece so the shoulders and the side match up.



Pin along the 2 shoulders and up the sides and along the sleeves.

Sew these together with a 1cm seam allowance. Using the 10 line on your machine. Stitch length 2.5

When you have sewn them all then zig zag along the seams. Cut little notches out of the armpit being careful not to cut the stitching.

This will ensure the fabric will not bunch up when you turn it the right side out.

Press all the seams .

Now sew the hem.





Open out the Kimono and with the wrong side facing you turn the bottom edge in by 1cm and press. Do this along all the hem.

Then turn up 2cm and pin as shown.



Sew along the hem near the open edge, use your needleplate lines to keep you straight. Place the folded edge on the 15 line as a guide.

Do the same with the hems of the sleeves. Use your free-arm to sew in a circle.



Then repeat all around the neckline, but do both folds at 1cm.

It can get a bit tricky when it comes to the corner of your neckline opening but don't worry, it will work with a bit of convincing/heavy handed pressing and pinning/tactical aggression. Use a straight machine stitch to secure the edges down, sewing as close as you can to the fold then press.

## Alternative neckband

Cut 2 x 3 ½ inch wide rectangles of fabric from the left over fabric.

Sew them together and press the seam open. Fold in half lengthways and press. You should have a long strip that is long enough to go along the neck edge of the Kimono.



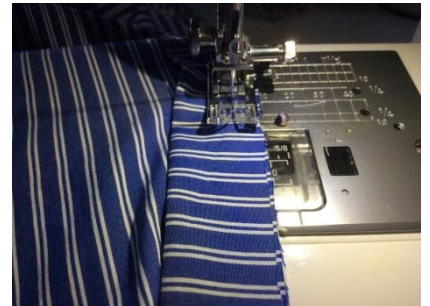
With the wrong side of the fabric on the outside fold in half and sew across the end.



Turn it out to the right side



Pin onto the front of the kimono. The raw edges should be against the raw edges of the neck and the folded part should be facing into the kimono. Machine near the raw edges with a 1cm seam allowance (10 line). Then Zig Zag all the raw edges to stop them fraying.



Now flip the band out so that the seam flips to the inside and press it down.

Top stitch all around the neckline on the Kimono –not the neck band , very close to the seam.

By doing this you are fixing it into place so it won't turn in.

If you like you could also finish the sleeves or the bottom hem like this. You could use a contrasting colour.