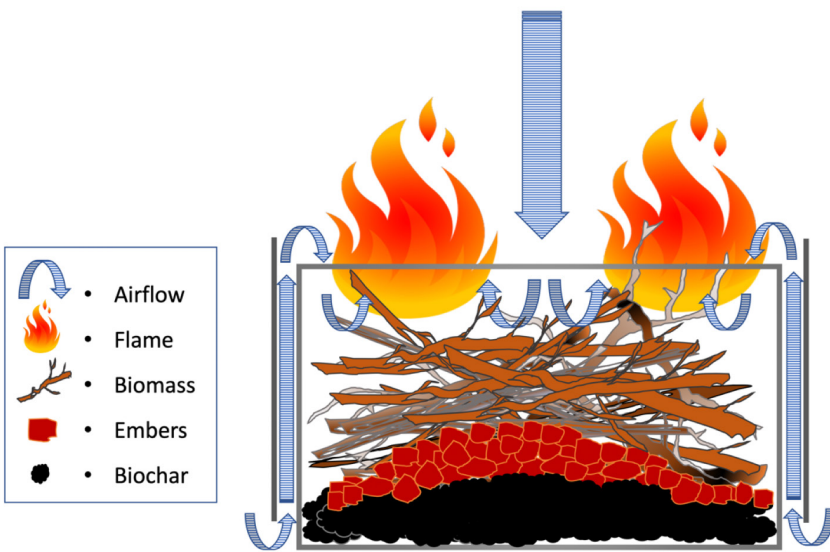


# Ring of Fire Kiln®

## from Wilson Biochar

### The Ring of Fire makes **Biochar**

The Ring of Fire Kiln® is a metal container for converting waste wood and brush into biochar, a valuable soil amendment. The kiln consists of an inner ring composed of six sheets of mild steel that are bolted together. An outer ring of lighter gauge steel bolts onto the brackets that hold the inner ring together. The purpose of the outer ring is to serve as a heat shield that holds in heat for better efficiency. Total volume of the kiln is 5.6 cubic yards.



#### How the Ring of Fire Biochar Kiln® works:

- The outer heat shield holds in heat for a faster burn
- Heat shield protects the operator from radiant heat
- Air moving through the annular gap pre-heats for more efficient combustion
- Air flow tends to suck smoke back into the kiln for a cleaner burn



#### Biochar expert and consultant

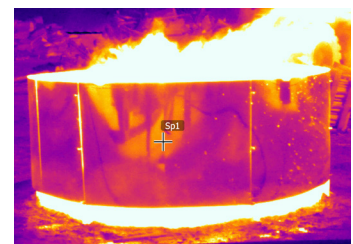
**Kelpie Wilson** is now offering the new and improved Ring of Fire Biochar Kiln for converting your waste wood into soil-building biochar.

#### The New Ring of Fire Kiln® features:

- Bigger capacity, better value  
1.8 times more volume
- Easier to ship, move and store
- Smoother field assembly

#### Still the same great function:

- Burns the smoke
- Converts biomass to biochar with 10-20% efficiency
- Faster and safer than an open burn pile
- Made in USA



~~\$2,400~~

List price

**\$2,200**

Introductory offer!

Order your Ring of Fire today!  
[www.WilsonBiochar.com](http://www.WilsonBiochar.com)



### Sequester Carbon in the Soil

- Easy to measure the volume of biochar in the kiln
- See [Wilsonbiochar.com](http://Wilsonbiochar.com) for information on how to calculate carbon sequestration and climate impact

### Reduce Smoke Emissions

The Ring of Fire is designed to pull smoke back into the kiln where it burns up.

### Ring of Fire Biochar Kiln® Specifications

Kiln diameter (with heat shield)	98 inches
Kiln height (with heat shield)	44 inches
Kiln total volume:	5.6 cubic yards
Kiln weight (fully assembled)	330 pounds
Number of kiln body sections	6
Weight of one kiln body section	37 pounds
Number of heat shield sections	6
Time to assemble in the field	15 minutes
Burn time to make 2 cubic yards biochar	4-5 hours
Time to quench and load finished biochar	1/2 hour
Number of workers needed	one to two

**The Ring of Fire Kiln** has been purchased and used by a wide variety of farms, small woodland owners, forestry contractors, fire safe councils, ecological restoration groups, universities and research institutions, and state and federal agencies.

### Our customers include:

- US Forest Service - Flathead National Forest
- Oregon Department of State Lands
- Wisconsin Department of Natural Resources
- Potter Valley Tribe
- California Conservation Corps
- Sonoma State University
- Santa Rosa Junior College - Shone Farm
- Bell Springs Fire Department
- VanDuzen/MadRiver Fire Safe Council
- Fire Ecology Network and Permaculture Institute of North America
- Lost Valley Education Center
- Quivira Coalition

Order your Ring of Fire today! [www.WilsonBiochar.com](http://www.WilsonBiochar.com)

