

Floating Ball Valves

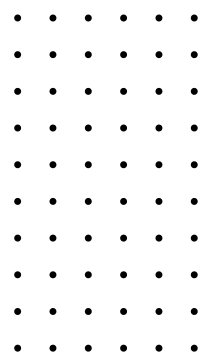
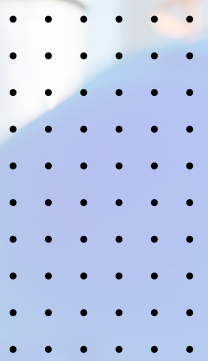
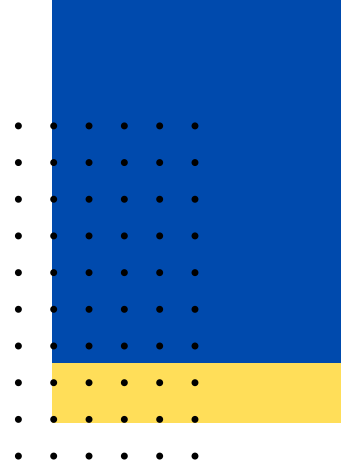




TABLE OF CONTENT



01. Company Overview

02. Design Feature

03. Product Range

04. One Piece Flange End Ball Valve

05. Two Piece Flange End Ball Valve

06. Three Piece Flange End Ball Valve

07. Three Piece Screwed End Ball Valve

08. One Piece Screwed End Ball Valve

About Us

At HNS Tech Industries, we specialize in providing high-quality flow-control solutions to meet the needs of various critical sectors such as oil & gas, power, petrochemicals, chemicals, fertilizers, and pharmaceuticals.



Our valve designs are created by an experienced team of experts who deeply understand industry-specific processes. We combine cutting-edge technology with rigorous manufacturing and quality assurance standards to transform these designs into high-performance products that our clients can trust.

At HNS Tech Industries, every phase of our manufacturing process follows the environment, health, and safety policy, ensuring that our products not only meet but exceed industry standards.



DESIGN FEATURES

Fire-Safe Feature:

HNS ball valves are equipped with a fire-safe design that includes secondary metal seats. In the event of a fire, if the soft seat material is completely burned off, the ball shifts to engage the downstream metal seat, ensuring a leak-tight seal to prevent further damage.

Cavity Pressure Relief Mechanism:

HNS ball valves include an automatic cavity pressure relief mechanism. This feature ensures that any increase in the temperature of the fluid trapped in the ball cavity does not cause dangerous pressure buildup.

Low Torque Design:

It's easy to operate HNS valves due to Low torque design.

Antistatic Feature:

When the ball rub against non-metallic seats, antistatic electricity can build inside valve which is a fire hazard, especially for flammable fluid pipelines. Our ball valves have inbuilt antistatic mechanisms that provide electrical continuity. Thus, greater safety when handling flammable material.

Mirror Finish Solid Stainless-Steel Ball:

HNS ball valves incorporate mirror-finished solid stainless-steel balls as a standard feature. This polished finish ensures bubble-tight sealing and reduces operating torque, enhancing efficiency and performance



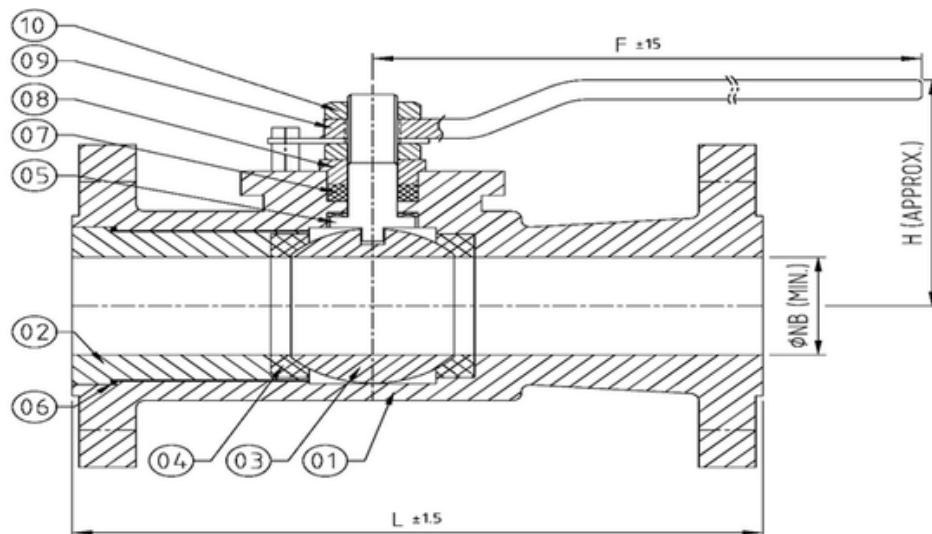
PRODUCT RANGE OF SOFT SEATED FLOATING BALL VALVE

HNS provides comprehensive range of soft seated floating ball valves for sizes 1/4" to 4" and ASME Classes from 150 to 600.

Type	Bore	Class	End Connections	1/2"	3/4"	1"	1-1/2"	2"	2-1/2"	3"	4"
Single Piece	Full /Reduce	150	Flanged	✓	✓	✓	✓	✓	✓	✓	✓
Single Piece	Full /Reduce	150	Screwed/Socket Weld	✓	✓	✓	✓	✓			
Two Piece	Full /Reduce	150	Flanged	✓	✓	✓	✓	✓	✓	✓	✓
Three Piece	Full /Reduce	150	Flanged	✓	✓	✓	✓	✓	✓	✓	✓
Three Piece	Full /Reduce	150	Screwed/Socket Weld	✓	✓	✓	✓	✓			

STANDARDS

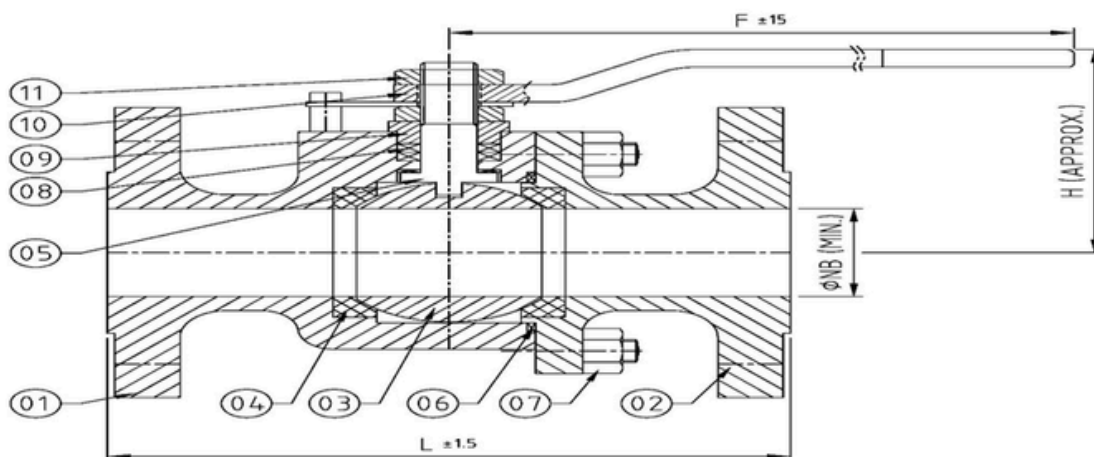
DESIGN :	ISO 17292/ASME B16.34/API6D
FACE TO FACE:	ASME B16.10
FLANGED DIMENSIONS:	ASME B16.5
PRESSURE TEST:	API 598/ISO 5208/BS 6755 Part1/IS 6157-1958
FIRE TEST:	API 607/ISO 10497



DIMENSION TABLE (MM)								
SIZE DN (NPS)	15 (1/2")	20 (3/4")	25 (1")	40 (1 1/2")	50 (2")	65 (2 1/2")	80 (3")	100 (4")
PORT (ØNB)	11	17	24	37	49	62	74	98
L	108	117	127	165	178	190	203	229
F	120	120	150	175	225	250	325	400
H	69	73	78	105	120	127	138	155

SR.NO.	DESCRIPTION	MATERIAL OF CONSTRUCTION		
01	BODY	WCB	CF8	CF8M
02	END CONNECTOR	WCB	CF8	CF8M
03	BALL	CF8/CF8M	CF8/CF8M	CF8M
04	SEAT	PTFE/RPTFE	PTFE/RPTFE	PTFE/RPTFE
05	STEM	SS 304/316	SS 304/316	SS 316
06	GASKET	GRAPHITE/PTFE/RPTFE	GRAPHITE/PTFE/RPTFE	GRAPHITE/PTFE/RPTFE
07	PACKING	GRAPHITE/PTFE/RPTFE	GRAPHITE/PTFE/RPTFE	GRAPHITE/PTFE/RPTFE
08	GLAND	SS 304/316	SS 304/316	SS 316
09	LEVER	CS	SS	SS
10	LEVER NUT	CS	SS	SS

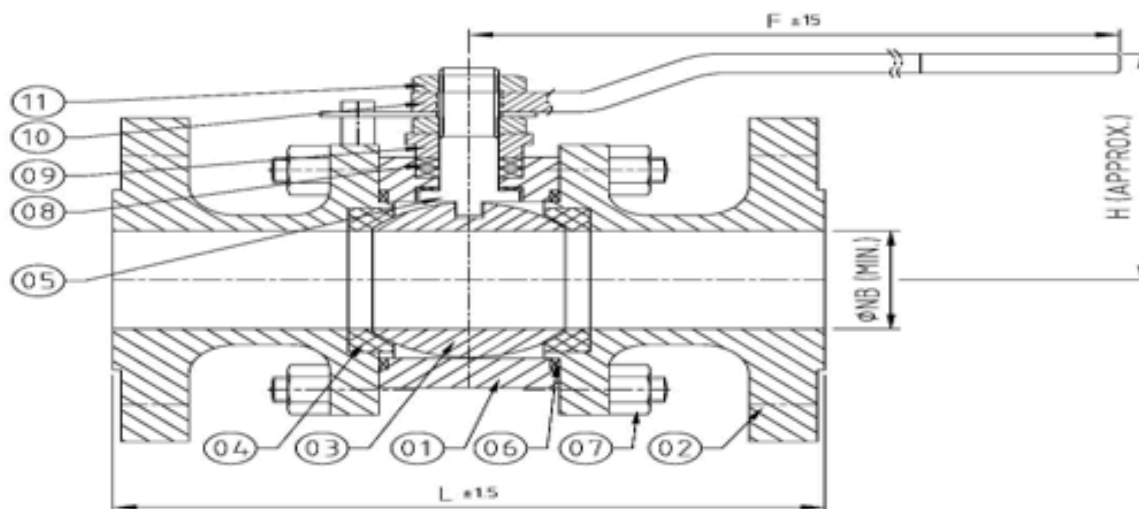
TWO PIECE FLANGE END BALL VALVE



DIMENSION TABLE (MM)								
SIZE DN (NPS)	15 (1/2")	20 (3/4")	25 (1")	40 (1 1/2")	50 (2")	65 (2 1/2")	80 (3")	100 (4")
PORT (ØNB)	11	17	24	37	49	62	74	98
L	108	117	127	165	178	190	203	229
F	120	120	150	175	225	250	325	400
H	69	73	78	105	120	127	138	155

SR.NO.	DESCRIPTION	MATERIAL OF CONSTRUCTION		
01	BODY	WCB	CF8	CF8M
02	END CONNECTOR	WCB	CF8	CF8M
03	BALL	CF8/CF8M	CF8/CF8M	CF8M
04	SEAT	PTFE/RPTFE	PTFE/RPTFE	PTFE/RPTFE
05	STEM	SS 304/316	SS 304/316	SS 316
06	GASKET	GRAPHITE/PTFE/RPTFE	GRAPHITE/PTFE/RPTFE	GRAPHITE/PTFE/RPTFE
07	PACKING	GRAPHITE/PTFE/RPTFE	GRAPHITE/PTFE/RPTFE	GRAPHITE/PTFE/RPTFE
08	GLAND	SS 304/316	SS 304/316	SS 316
09	LEVER	CS	SS	SS
10	LEVER NUT	CS	SS	SS

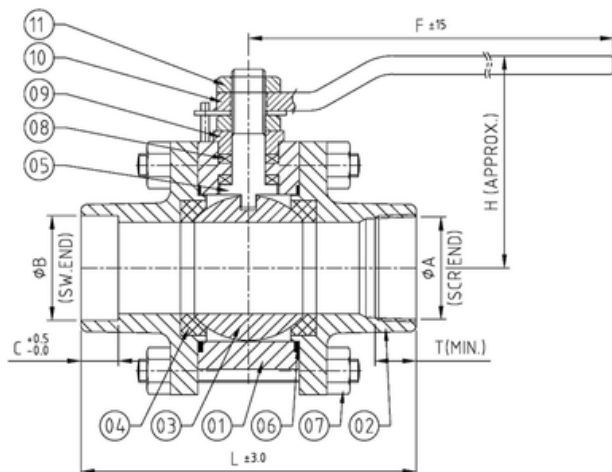
THREE PIECE FLANGE END BALL VALVE



DIMENSION TABLE (MM)								
SIZE DN (NPS)	15 (1/2")	20 (3/4")	25 (1")	40 (1 1/2")	50 (2")	65 (2 1/2")	80 (3")	100 (4")
PORT (ØNB)	11	17	24	37	49	62	74	98
L	108	117	127	165	178	190	203	229
F	120	120	150	175	225	250	325	400
H	69	73	78	105	120	127	138	155

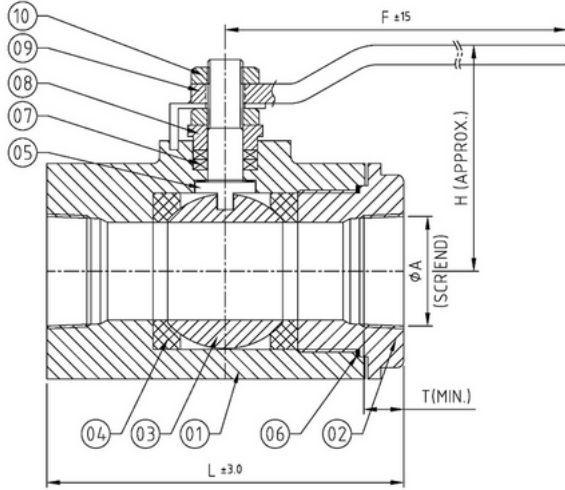
SR.NO.	DESCRIPTION	MATERIAL OF CONSTRUCTION		
01	BODY	WCB	CF8	CF8M
02	END CONNECTOR	WCB	CF8	CF8M
03	BALL	CF8/CF8M	CF8/CF8M	CF8M
04	SEAT	PTFE/RPTFE	PTFE/RPTFE	PTFE/RPTFE
05	STEM	SS 304/316	SS 304/316	SS 316
06	GASKET	GRAPHITE/PTFE/RPTFE	GRAPHITE/PTFE/RPTFE	GRAPHITE/PTFE/RPTFE
07	BOLTS/NUTS	B7/2H	B8/8	B8M/8M
08	PACKING	GRAPHITE/PTFE/RPTFE	GRAPHITE/PTFE/RPTFE	GRAPHITE/PTFE/RPTFE
09	GLAND	SS 304/316	SS 304/316	SS 316
10	LEVER	CS	SS	SS
11	LEVER NUT	CS	SS	SS

THREE PIECE SCREWED END BALL VALVE



DIMENSION TABLE (MM)					
SIZE DN (NPS)	15 (1/2")	20 (3/4")	25 (1")	40 (1 1/2")	50 (2")
ØA (SCR END)	1/2"	3/4"	1"	1 1/2"	2"
ØB (SW END)	21.8	27.2	33.9	48.8	61
C	13.6	13.9	17.3	18.4	19
T	9.5	12.5	12.5	12.5	16

SR.NO.	DESCRIPTION	MATERIAL OF CONSTRUCTION		
01	BODY	WCB	CF8	CF8M
02	END CONNECTOR	WCB	CF8	CF8M
03	BALL	CF8/CF8M	CF8/CF8M	CF8M
04	SEAT	PTFE/RPTFE	PTFE/RPTFE	PTFE/RPTFE
05	STEM	SS 304/316	SS 304/316	SS 316
06	GASKET	GRAPHITE/PTFE/RPTFE	GRAPHITE/PTFE/RPTFE	GRAPHITE/PTFE/RPTFE
07	BOLTS/NUTS	B7/2H	B8/8	B8M/8M
08	PACKING	GRAPHITE/PTFE/RPTFE	GRAPHITE/PTFE/RPTFE	GRAPHITE/PTFE/RPTFE
09	GLAND	SS 304/316	SS 304/316	SS 316
10	LEVER	CS	SS	SS
11	LEVER NUT	CS	SS	SS



DIMENSION TABLE (MM)					
SIZE DN (NPS)	15 (1/2")	20 (3/4")	25 (1")	40 (1 1/2")	50 (2")
ØA (SCR END)	1/2"	3/4"	1"	1 1/2"	2"
C	13.6	13.9	17.3	18.4	19
L	63	73	85	105	125
F	120	120	150	175	225
H	63	66	69	89	104

SR.NO.	DESCRIPTION	MATERIAL OF CONSTRUCTION		
01	BODY	WCB	CF8	CF8M
02	END CONNECTOR	WCB	CF8	CF8M
03	BALL	CF8/CF8M	CF8/CF8M	CF8M
04	SEAT	PTFE/RPTFE	PTFE/RPTFE	PTFE/RPTFE
05	STEM	SS 304/316	SS 304/316	SS 316
06	GASKET	GRAPHITE/PTFE/RPTFE	GRAPHITE/PTFE/RPTFE	GRAPHITE/PTFE/RPTFE
07	PACKING	GRAPHITE/PTFE/RPTFE	GRAPHITE/PTFE/RPTFE	GRAPHITE/PTFE/RPTFE
08	GLAND	SS 304/316	SS 304/316	SS 316
09	LEVER	CS	SS	SS
10	LEVER NUT	CS	SS	SS



HNS TECH-INDUSTRIES PVT. LTD.

217- GANGA COLLIDIUM-1, NEAR GANGA
DHAM CHOWK, BIBWEWADI
PUNE-411037.

E-mail: sales@hnsvalves.com