

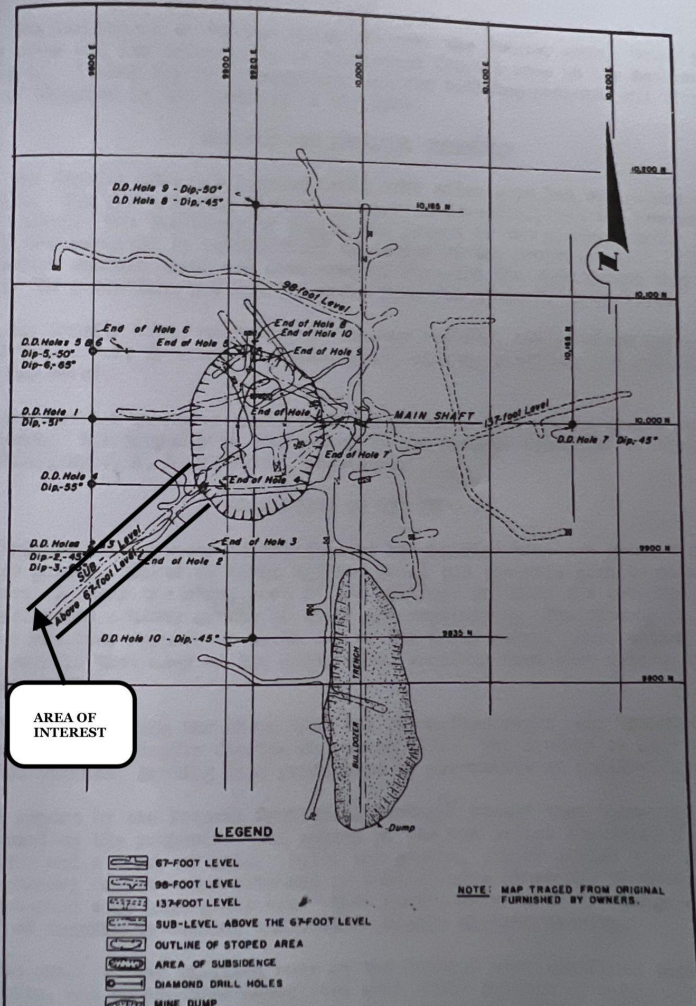


GPR TESTING RESULTS

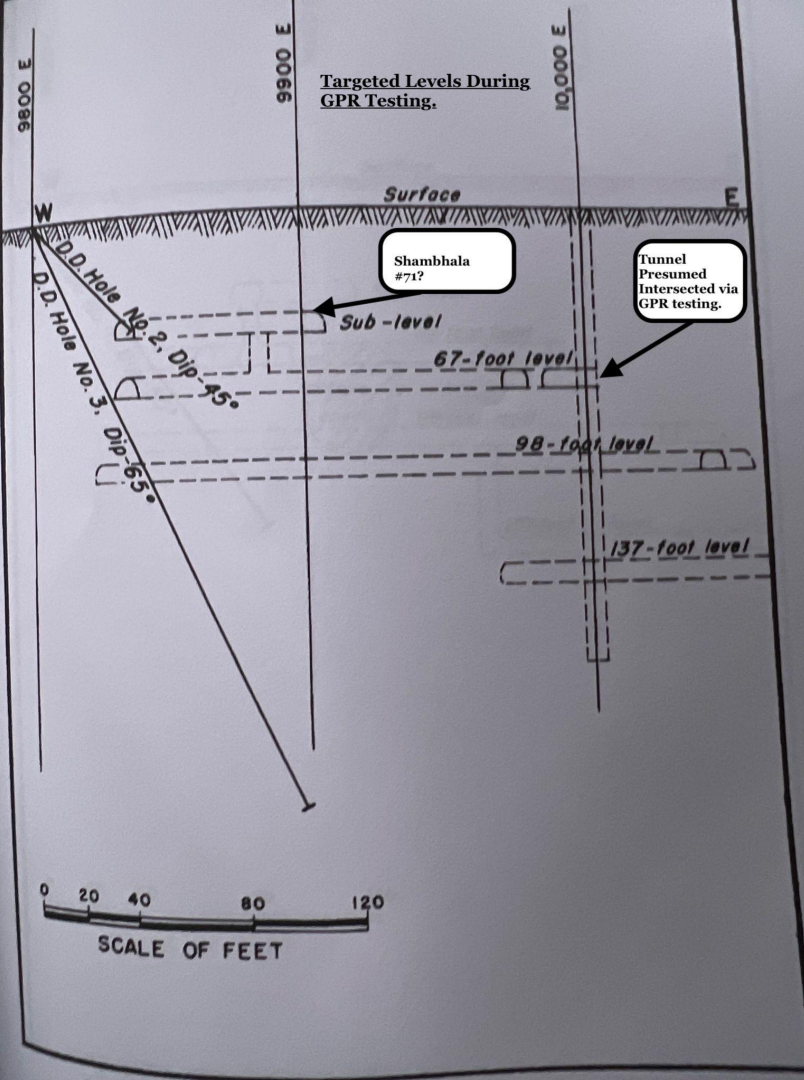
October 19, 2022

New Rambler Operation, Historical Map.

The GPR tests completed throughout the property were intended to target the presence of old underground workings of the original New Rambler Mine operation see : [1968 Geological Survey of Wyoming](#). The New Rambler Mine was developed in the only known important lode deposit in the district. The mine operated intermittently from about 1900 to August of 1918 when the mine buildings were destroyed by fire. Active mining never resumed at this site, and as a result very little information on these mines exists in geological literature. Nearly all of the old mine buildings, mine maps, reports, and records were lost to the fires.



Targeted Levels of the original New Rambler Operation.



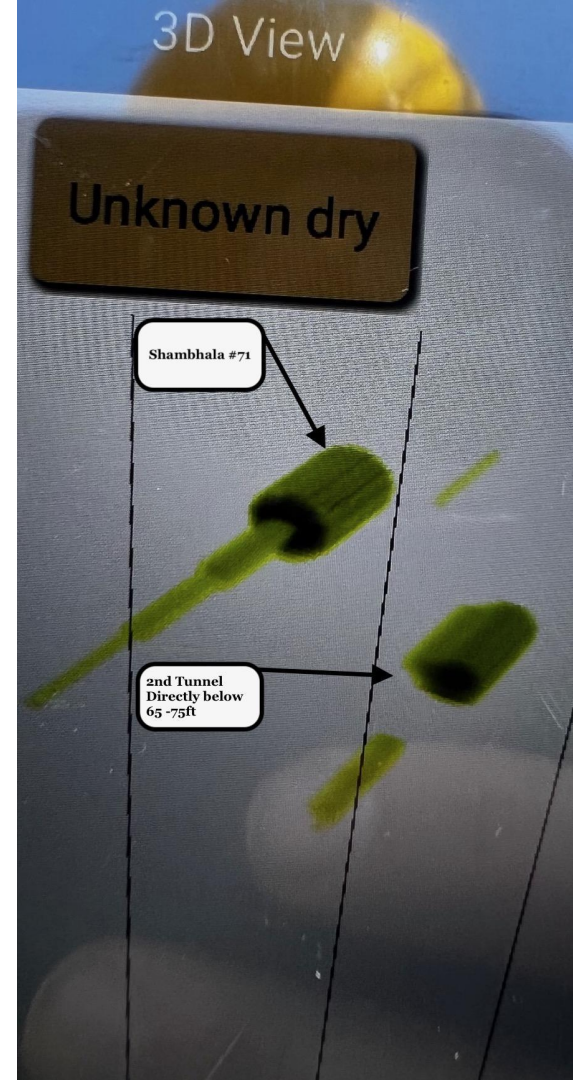
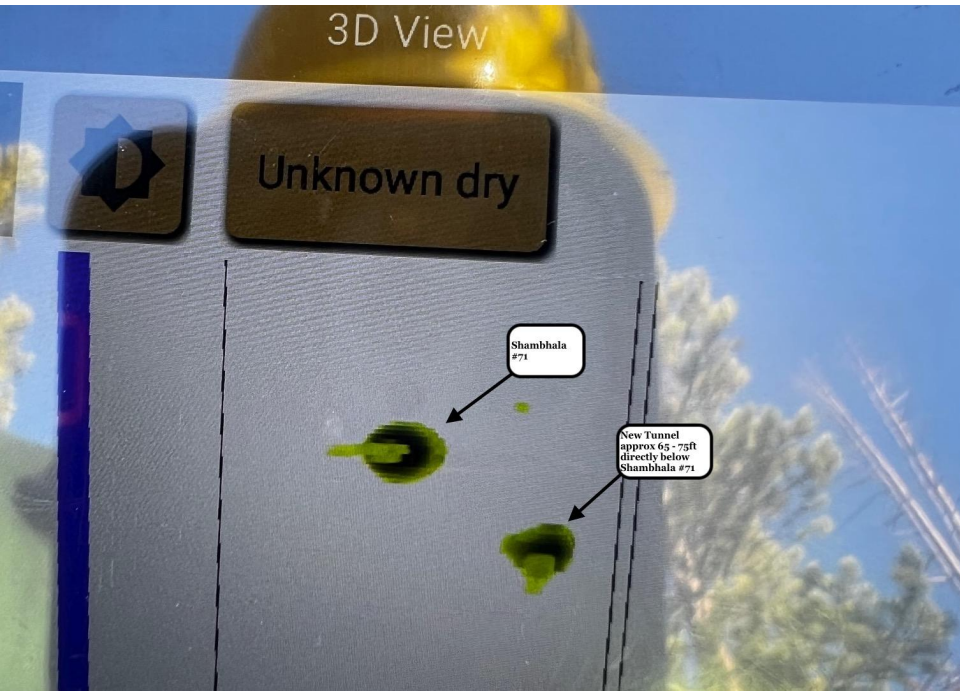
The GPR results received and identified by Buyer Group is a significant step towards the revival and restoration of this American History :

- Two New Underground tunnels identified and confirmed.
- Both Tunnels estimated to be at a depth of 67ft. Described as “the 67 foot level” in history. (See Attached Image)
- One tunnel runs directly underneath Shambhala #71’s existing tunnel.
- One tunnel runs perpendicular in front of Shambhala #71’s existing tunnel.

Testing Equipment : [Gepard GPR 3D](#)

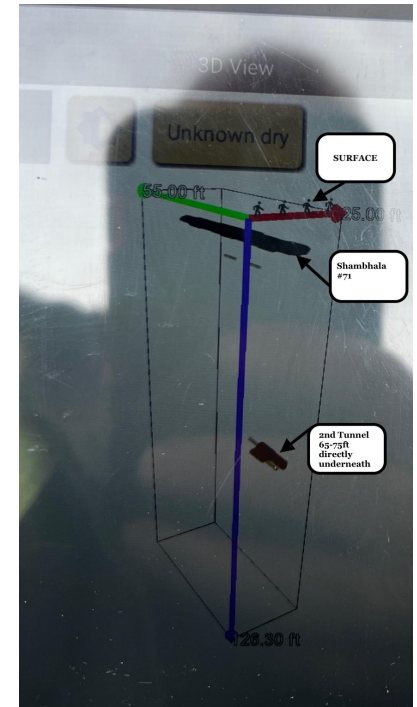
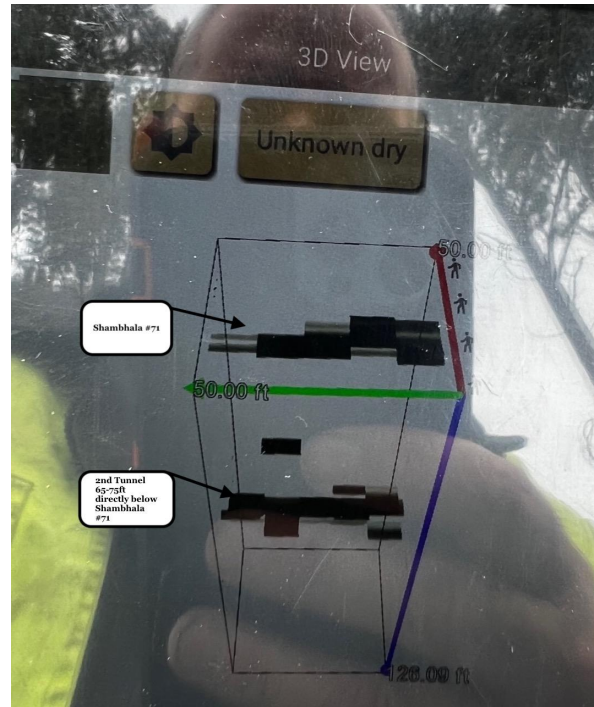
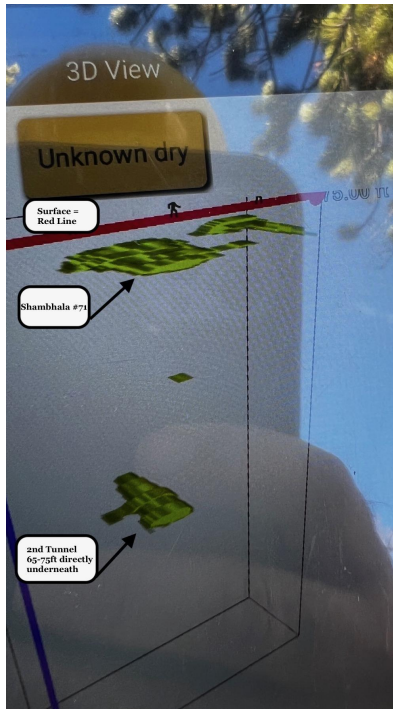


Tunnel running directly underneath Shambhala #71's existing tunnel (View 1)



Tunnel running directly underneath Shambhala

#71's existing tunnel (View 2)



Next Steps?

For the steps ahead Buyer Group will be exploring the necessary drill rig needed to reach a depth of 65 - 75ft. The goal being punching a 4” hole thru to the old workings below (the 67 foot level) and descending LED equipped cameras for further inspection and confirmation. If necessary, tracked and tethered bots with mounted GoPros can also be utilized to explore a few hundred feet in either direction from the drill hole. This will allow Buyer Group to map out the underground workings with the intent of then matching it up to the available historical maps.



MB-23 Rotary Drill with depth capacity of 50 - 75 feet.

Closing Comments :

On the GPR Results, Buyer Group Chief Executive Officer David A. Bryant commented: “Human eyes haven’t seen the inside of this mine since the fires of 1918! Together we can all be a part of witnessing American history being revived in real time. This is now the second time this season I have been amazed with testing results. First the XRF results and now this, we are thank-ful for the tremendous and consistent shareholder support that has made all of this possible.”

