



# MMOCC Newsletter – NOVEMBER 2024

*Mid Mo Old Car Club  
PO Box 1594,  
Jefferson City, MO 65102*

## 2024 MMOCC MONTHLY MEETINGS

Date	Location	Topic
11//2024	No meeting in November.	
12/19/2024	American Legion / 1423 Tanner Bridge Road / JCMO. 6pm.	Holiday party and rob your neighbor gift exchange. Meal provided by the Club. Bring gift for your gender.

### MID-MO OLD CAR CLUB

A big **THANK YOU** goes out to these businesses and individuals for sponsoring our 55th Annual Old Car Round Up and Show!

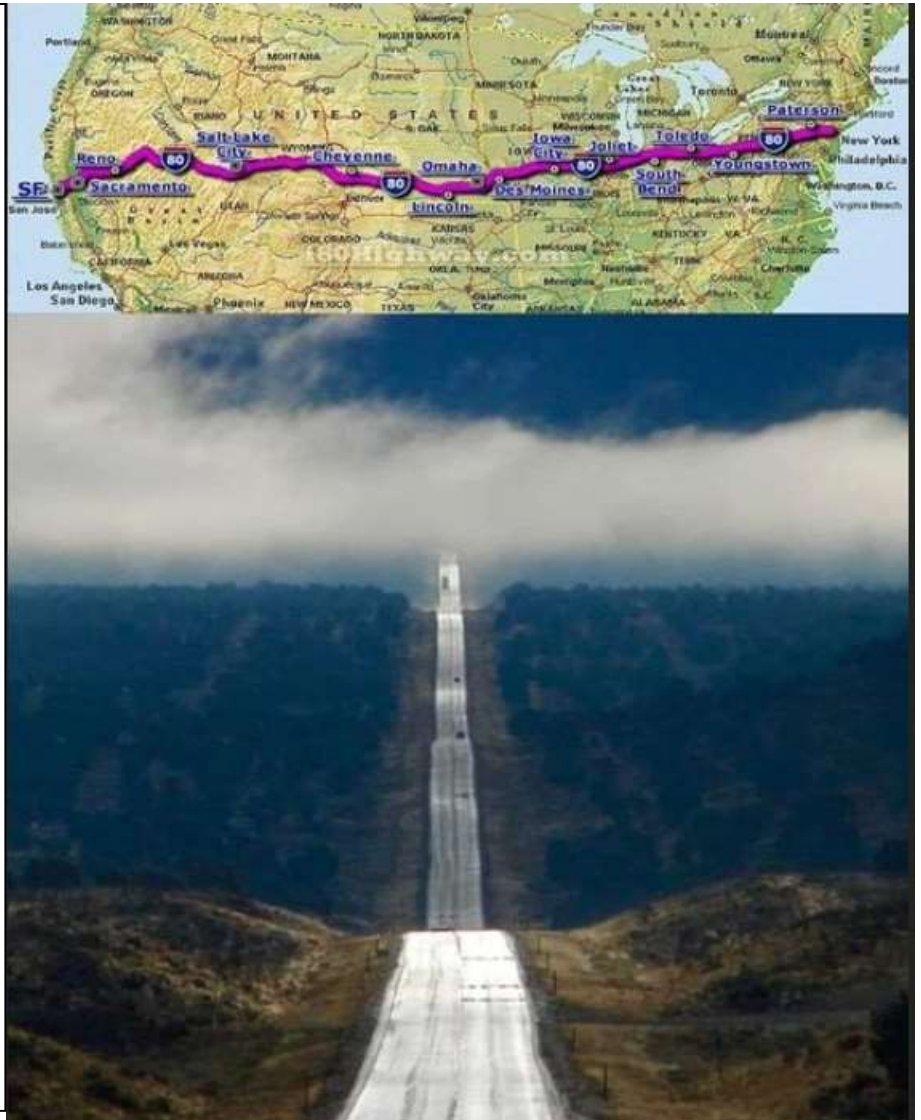
We encourage you to visit these businesses (or to personally thank the individuals) to show them your support in return!

Car Show Sponsors
Bandelier Mustang Connection
Capital Hauling Company
Central Bank
Cole County Upholstery
David Jaeger Insurance
Evers and Company CPAs
Farmers Bank of Lohman
Fechtel Beverage and Sales
Governor Motors
Jack Boswell
Jim Lewis Tire and Wheels
Jim Logan Audio Service
Joe Machens Capital City Ford
Millard Family Chapels
Moser's Food - Show Me Oil Co.
Rusty Drewing Toyota-Chevrolet-Buick-GMC
Sam Bushman for Presiding Commissioner
Show Me Health Solutions LLC
South Side Barber Shop
Warehouse Tire and Muffler
Xtreme Body and Paint

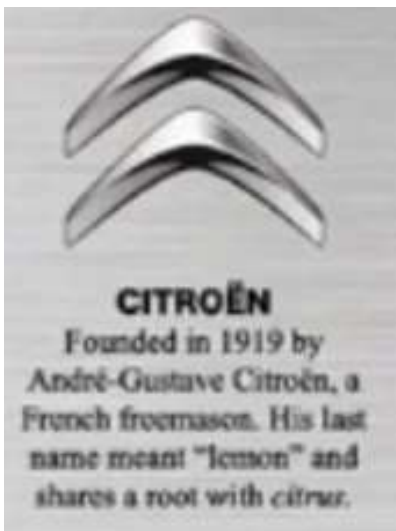
Scholarship Sponsors
Angela Laws
Billy and Janice Bonnot
Darrell Hake
Dennis and Linda Smith
Don and Becky Weber
Foster's Transmission and Service
Jim's Classics
Keith Pedigo
Kemna Collision Repair
Kevin Riley
Kirk Farmer
Larry Kolb
Larry and Vera Rhea
Lyle and Lori Rosburg
Mike Hall
Mike Raithel
Precision Machine, Inc.
Stan Fast
Todd Slanker
Wes Scott
Woodman Engineering Co.

Door Prize, Goody Bag, and Other Sponsors
Daisy Delight
Kelsey Tire
Kustum Signs, LLC
McDonalds
MoDOT
O'Reilly Auto Parts
RockAuto
Williams-Keepers LLC, CPAs & Consultants

Did you know that "the Highway to Heaven" Interstate Route 80 (I-80) is one of the major interstate highways in the United States, traversing the country from east to west. The part of Interstate 80 known as "the highway to heaven" is located in Wyoming, between the cities of Laramie and Cheyenne. This stretch of highway passes through the "Summit", a mountain pass in the Laramie Mountains, which is the highest point on I-80 at an altitude of approximately 8,640 feet (2,634 meters) above sea level. This section of highway is notable for its stunning scenery and for being challenging during the winter due to severe weather conditions.



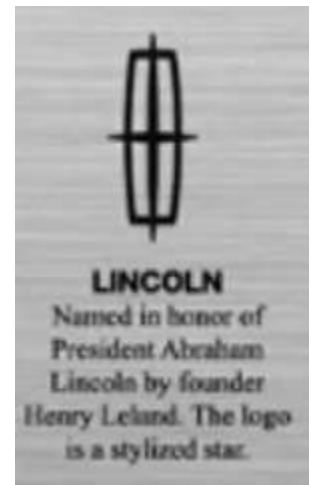
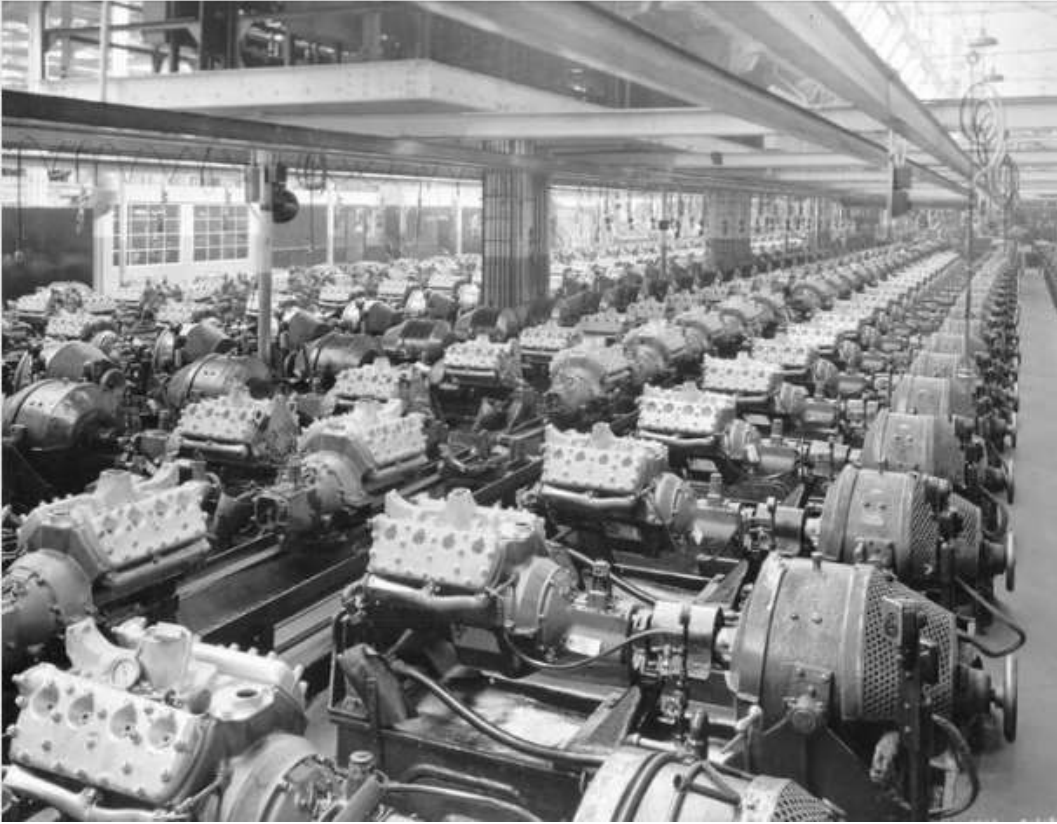
## Definition of CKD and CBU Cars



**CKD stands for Completely Knocked Down cars.** These are vehicles that are shipped in parts and assembled at the dealership or factory. Conversely, CBU stands for Completely Built Units which are vehicles that are shipped in one piece and do not need to be assembled.

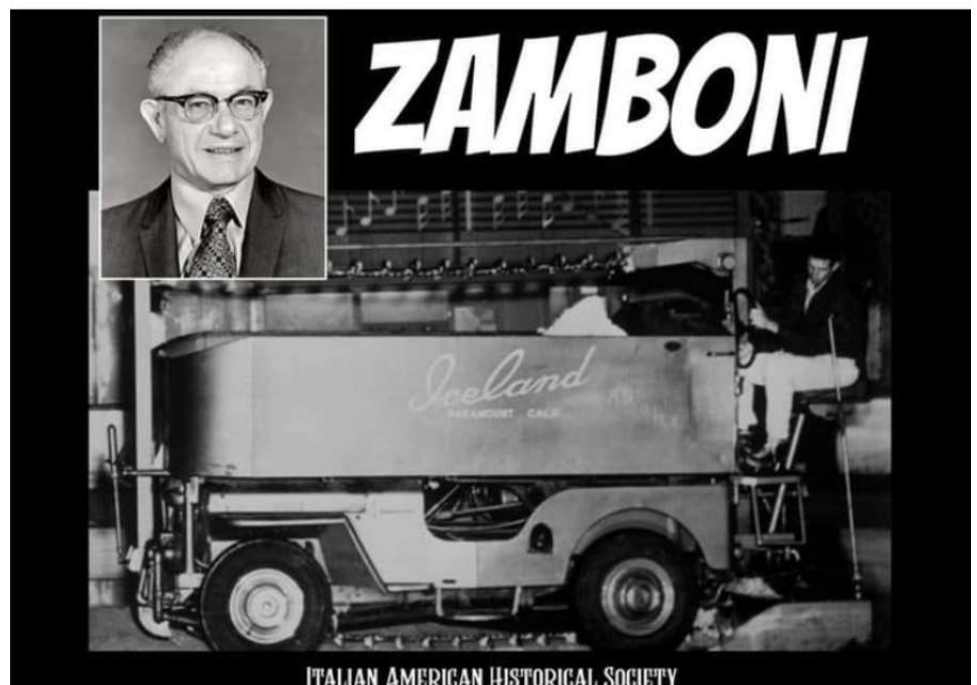


Ford V8 break-in procedure. An electric motor was used to spin the engine until the torque resistance fell to the proper level. No, the manufacturing tolerances were not what they are today.



Frank Zamboni was born in 1901, in Eureka, UT, to Italian immigrant parents. In 1920, the family moved to the harbor district of Los Angeles, CA, where Frank and his younger brother, Lawrence later opened an ice-making plant in nearby Paramount. By 1940, with household ownership of refrigerators and freezers on the rise, the Zamboni brothers decided to use their remaining refrigeration equipment to open Iceland, a skating rink in Paramount, which is today a charitable enterprise of the NHL's Los Angeles Kings, the "L.A. Kings Iceland in Paramount".

It was at the Iceland rink that Frank Zamboni created a machine that could resurface ice to a completely smooth and shimmering state. A task that used to take five men ninety minutes to perform could now be done by one man in just fifteen minutes. The machines are known today simply as Zambonis. It took nine years to develop the Zamboni and Frank's son, Richard has said that "One of the reasons he stuck with it was that everyone told him he was crazy." After seeing the machine, figure skating legend Sonja Henie ordered two, as did the Chicago Blackhawks of



## CARTER CARBURETOR (St. Louis)

Designed by Hall & Graf. Carter Carburetor Company Factory, 2840 North Spring Avenue built in 1915 Jeff Vanderlou, St. Louis, MO. Image of a pair of Carter AFB (Aluminum Four-Barrel) Carburetors on top of a 1970 Chrysler 426 Hemi.  
Demolished: 2015



## THE GM PLANT IN ST. LOUIS, CHEVROLET MOTOR DIVISION, 1946

General Motors Factory at 3809 Union Boulevard, viewing northwest along Natural Bridge in St. Louis after World War Two. On right are a Night Owl Sandwich System diner and the Pink Elephant Ice Cream Bar. Photograph by Joseph Hampel, with digital image from the Missouri Historical Society in St. Louis.





**CHEVROLET**

**America's Largest and Finest Low-Priced Car!**



**Yes, LARGEST...**  
and the facts speak for themselves

**Yes, FINEST...**  
and here are the plain-spoken reasons

It's **LONGEST** in the low-price field, a full 197 1/2 inches of spirited action and clean, sweeping lines. It's **HEAVIEST** in the low-price field, a staunch and solid 3140 pounds in the model illustrated. It has the **WIDEST TREAD** in the low-price field, a road-tuning 58 1/2 inches between centers of the rear wheels. Longer, heavier, with wider tread... that's the measure of Chevrolet's rock-solid value... big in looks, big in handling and riding ease, big in road-hugging performance. Why settle for less than a Chevrolet... when Chevrolet is the lowest priced line in the low-price field.

**FISHER BODY QUALITY**, renowned for solid and lasting goodness. **UNITIZED KNIFE-ACTION RIDE**, smooth and gliding. **VALVE-IN-HEAD ENGINE ECONOMY**, spirited performance at lowest cost. **PANORAMIC VISIBILITY**, with a big curved windshield and large window area. **JUMBO-DRUM BRAKES**, biggest in Chevrolet's field. **SAFETY-SIGHT INSTRUMENT PANEL**, with shielded instrument lights. **POWERLIZE AUTOMATIC TRANSMISSION**, billion-mile-proof, combined with 105-h.p. valve-in-head engine optional on 500 series models at extra cost.

**Good reasons why MORE PEOPLE BUY CHEVROLETS THAN ANY OTHER CAR!**

**Schanzmeyer Motors**  
Phone 47 Y      Meta, Mo.



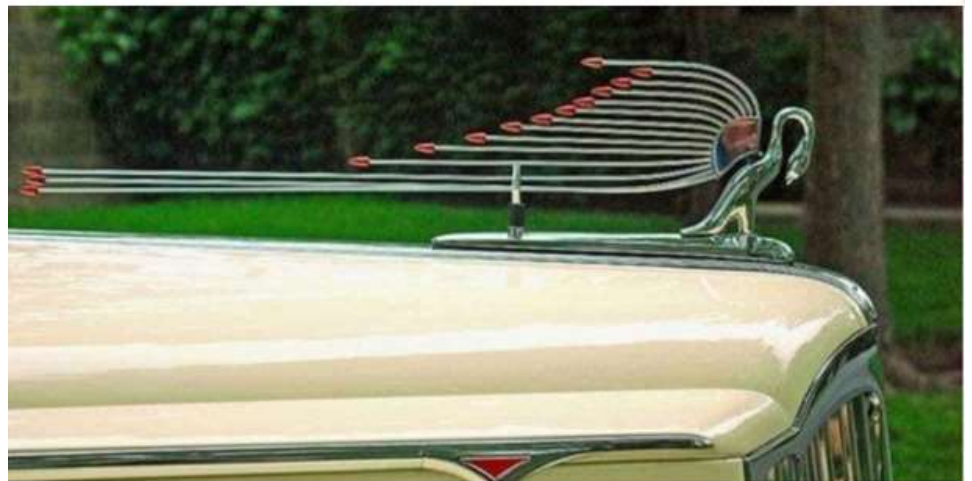
## 1951 Chevrolet Styleline Deluxe

Lyle Rosburg  
Member since 2005



Advertisement from Schanzmeyer  
Motors in Meta, MO

This is a Cormorant, the hood ornament for the 1930s Packards that doubled as the radio antenna, too.





## MMOCC SHIRTS:

We have T-shirts in gray and white, collared polo-type shirts, and a humorous T-shirt addition. If your shirt looks dingy, time to upgrade! Shirts available at future meetings and events. \$20 for collared shirts. \$15 for t-shirts. \$10 for hats. Contact Jim Martin at 573-864-4048.



Dual headlamps were a new feature for 1958 Buicks, giving the assembly line employees more to do to get them focused. Here at the factory in Flint, Mich. a worker uses a pair 22-inch lenses and photo-electric cells to get the heavily chromed new Buick on the beam.



## NEW 1956 CHEVROLET *Task-Force* TRUCKS

### SEDAN DELIVERY



### PICKUPS



### PANELS



### CARRYALL SUBURBANS



### STAKES



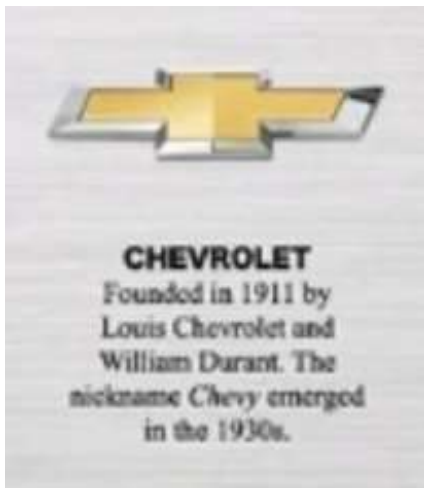
### FORWARD CONTROL CHASSIS



### CAB AND CHASSIS



### SCHOOL BUS CHASSIS



“Stepping back to 1936” with a fascinating look at 48 cars in an elevator parking garage in Downtown Chicago! This innovative approach to urban parking reflects the forward-thinking spirit of the era, as cities began adapting to the growing number of automobiles.

The sleek design of the cars and the architectural elegance of the garage showcase the blend of functionality and style that defined 1930s America. This moment captures the bustling energy of city life and the evolution of transportation in urban settings.

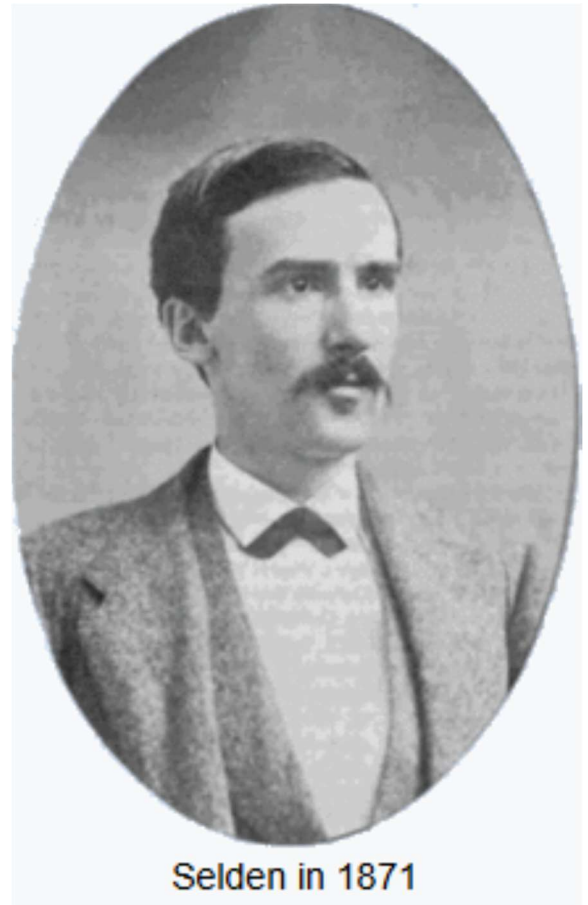


# GEORGE SELDEN

George Baldwin Selden (September 14, 1846 – January 17, 1922) was an American patent lawyer and inventor from New York who was granted a U.S. patent for an automobile in 1895.

## The Selden Road-Engine

In 1899 he sold his patent rights to William C. Whitney, who proposed manufacturing electric-powered taxicabs as the Electric Vehicle Company, EVC, for a royalty of US\$15 per car with a minimum annual payment of US\$5,000. Whitney and Selden then worked together to collect royalties from other budding automobile manufacturers. He was initially successful, negotiating a 0.75% royalty on all cars sold by the Association of Licensed Automobile Manufacturers. He began his own car company in Rochester under the name Selden Motor Vehicle Company.



Selden in 1871

However, Henry Ford, owner of the Ford Motor Company, founded in Detroit, Michigan, in 1903, and four other car makers resolved to contest the patent infringement suit filed by Selden and EVC. The legal fight lasted eight years, generating a case record of 14,000 pages. Ford's testimony included the comment, "It is perfectly safe to say that George Selden has never advanced the automobile industry in a single particular...and it would perhaps be further advanced than it is now if he had never been born."

The case was heavily publicized in the newspapers of the day, and ended in a victory for Selden. In his decision, the judge wrote that the patent covered any automobile propelled by an engine powered by gasoline vapor. Posting a bond of US\$350,000, Ford appealed, and on January 10, 1911, won his case based on an argument that the engine used in automobiles was not based on George Brayton's engine, the Brayton engine which Selden had improved, but on the Otto engine.

This stunning defeat, with only one year left to run on the patent, destroyed Selden's income stream. He focused production of his car company on trucks, renaming his company the Selden Truck Sales Corporation. It survived in that form until 1930 when it was purchased by the Bethlehem Motor Truck Corporation. Selden suffered a stroke in late 1921 and died aged 75 on January 17, 1922. He was buried in Mount Hope Cemetery in Rochester. It is estimated he received several hundred thousand dollars in royalties.



Actor Jackie Gleason's custom built 1969 Lincoln Continental Limousine.

This one-of-a-kind limousine was built by Carron and Company in Inkster, Michigan for a reported cost of \$65,000.



# Upcoming Events that MMOCC Plans to Attend

## A. NO November meeting.

### B. December Meeting / Holiday Party.

- Thursday, December 19, 2024. Arrive as early at 5pm. Meal about 6pm.
- American Legion off Tanner Bridge.
- Meal provided by the Club.
- Bring a rob-your-neighbor gift for your gender valued around \$25. Be creative!

### C. 2025 MMOCC Monthly Meetings.

- Fourth Thursday of each month, generally.
- Time, location, and topics to be determined.



#### Officers:

President Tim Petty (573-694-2977)  
Vice President Dennis Smith (573-680-2505)  
Secretary Lyle Rosburg (573-291-7159)  
Newsletter Editor Lyle Rosburg (573-291-7159)  
Treasurer Larry Rhea (573-606-9266)  
Historian Ron Bandelier (573-893-2553)  
2025 Car Show Chair Justin Colvin (573-694-6813)

NEEDED: President for 2025.

Mid-Mo Old Car Club  
PO Box 1594,  
Jefferson City, MO 65102

