



# MMOCC Newsletter –

## MAY 2020

*Mid Mo Old Car Club  
PO Box 1594,  
Jefferson City, MO 65102*

## BRIDGES

Merriam-Webster defines a BRIDGE as a:

- a. a structure carrying a pathway or roadway over a depression or obstacle.
- b. a time, place, or means of connection or transition.

We certainly benefit from the bridge in Jefferson City. The original bridge was funded by the Jefferson City Bridge and Transit Company, the predecessor the Jefferson City Area Chamber of Commerce.

First bridge over the Missouri River at Jefferson City



Now, with these odd Social Distancing times, we all have to BRIDGE the divide that separates us. That can be done with

email, Facebook, newsletters, Zoom video conference and “socially distant cruises”. It is different, but we can adapt.

One piece of bridge history we can still drive on are the Swinging Bridges of Miller County.

Originally planned for May 16, the weather forecast said Saturday, May 23 was better. Bring your old car, hand sanitizer, lunch, and lawn chair as we leave Blair Oaks High School at 9am to visit the last three remaining swinging bridges in Miller County. See “Upcoming Events” later in the newsletter for additional info and see the itinerary emailed last week. Hardcopies will be available at the start of the cruise, but you can just follow the crowd!



40 Cole County Illustrated Sketch Book and

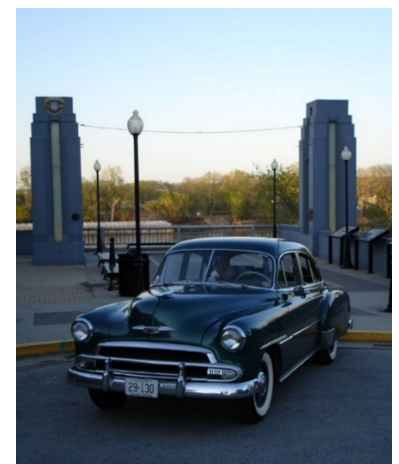
*The Jefferson City Bridge & Transit Co*  
Office: 228 Madison St.

<p><b>OFFICERS</b></p> <p>FRANK H. WISSENER, President and Manager          HENRY J. BUCKLEY, Vice President          CHAR. E. HERR, Secretary          HENRY C. GILBERTSON, Treasurer          J. J. MONAGHY, Superintendent          STE. BROOKER, 1918</p>	<p><b>BOARD OF DIRECTORS</b></p> <p>HENRY C. GILBERTSON, CHAR. E. HERR          H. S. FRIEDRICHSEN, HENRY J. BUCKLEY          WM. J. DEWARDE, JOSE P. BRIDGEMAN          WM. W. WOODRUFF, J. P. AMMELT          FRANK H. BUNGER, R. BRIDGEMAN          RICHARD J. GALEMETER</p>
---	---

For communication with the M., K. & T. and C. & A. Railroads leave orders as follows:

For Passengers and Baggage, M., K. & T., and Freight for M., K. & T. and C. & A. Railroads: Company's office, No. 228 Madison St.	For Passengers and Baggage C. & A. Railroad: At C. & A. Ticket Office, No. 102 West High St. (Merchants' Bank Building)
---	---

FOR SCHEDULE OF TOLL RATES APPLY TO COMPANY'S OFFICE



As cars have changed over the years, drivers, mechanics, and collectors have all had to adapt and BRIDGE the changes, but as we can see by or diverse Old Cars, there is something for everyone! That is why Old Cars are Cool!

*MMOCC President Lyle Rosburg  
573-291-7159 and lrosburg@hotmail.com*

Per Wikipedia: The original bridge was built in 1896 and had three spans and was downstream of the current bridge. It had a single column in the middle of the river that rotated 90° to allow boat traffic to pass (the rotation could disrupt traffic for 45 minutes). The bridge was torn down in 1958. The main span was 134.1 metres (440 ft). The diameter of the pivot pier was 6.7 metres (22 ft). The pillars at the south entrance to the bridge are still in place, now a part of Rotary Park, overlooking the river at the end of Bolivar Street.



Crossing the Missouri River "Draw Bridge" in Jefferson City, back in the day. US 54/63 took you to McCarty (the original 50/63/54) and to Madison St. (The original US 54 to Lake Ozark). Visit the pillars still standing on Bolivar Street. Also visit Das Steinhaus and see the dead end street ...that's where Madison (54) used to take you before the current highway cut through middle of it.



# STORIES

## Leonard Rutledge:

Our favorite ride is our iconic 1970 Volkswagen Bus. Our bus was purchased in Kansas City and later moved to Columbia where it served its first owner for 135,000 miles and over 36 years. The original owner referred to it as a "Deluxe" having a 3 x 4-foot sunroof (21 cranks to open), chrome around the belt line, bumper guards and AM/FM radio. The engine was rebuilt around 120,000 miles by the father of a famous race car driver. We purchased and had the bus restored in 2006. B&C in Freeburg was helpful with advice, parts and refreshing the original engine, transmission, front axle and brakes. Volkswagen Buses have been a part of our family since 1973, they were our daily drivers, we loved the versatility of being able to haul cargo or people. Now sometimes I feel like the farmer who retired his team of horses as we no longer depend upon our bus for transportation and only use it for special occasions. When we show our bus, we find everyone has a VW bus story, most of the stories concerned the lack of heat or power. I show them the ice scraper on the dash to use to scrape the frost off the inside of the windshield and a sign in the back window "You shouldn't have gotten behind a VW Bus". The Volkswagen bus turned 60 on October 6, 2007 and ceased production in Brazil in 2014.

### **Type 2251 VIN # 2202092585 Eng # B5140557 1600 CC Single Port 57 HP @ 4400 RPM**

This Bay Window Bus (nickname for a Volkswagen bus built from August 1968 to May 1979) was purchased by Ron and Madolyn Mason on January 13<sup>th</sup>, 1970 from

Lockwood Motors which was located in Kansas

City, Kansas. Later Ron moved his family and the bus to Columbia. The bus is a "deluxe" model with the chrome around the belt line, sunroof, bumper guards and an AM/FM radio. We have been told that the original engine was rebuilt by Carl M Edwards in Columbia (Carl Edwards's father)

and now has traveled over 135,000 miles. In September 2006 it was reluctantly sold to Leonard and Quinetta Rutledge. The bus was driven to Jefferson City, but due to

extensive rust damage was scheduled for a complete rebuild. It was driven to Moberly where the body was rebuilt and painted by Missouri Vocational Enterprise's vehicle restoration program. We were told this was the worst case of rust they had encountered. Parts and panels were obtained from multiple sources. Even though they look alike, in some cases a part will only fit one production year. Mike and Lori of B&C in Freeburg, MO were very helpful with advice, locating parts, and refreshing the original engine, transmission, front axle, and brakes. The original color and scheme were not followed. Leonard always wanted a yellow bus, so the bus



was painted yellow with the color scheme as a 1971 where the white top extends to the beltline instead of the drip rail. Leonard and Quinetta have owned and driven Volkswagen buses since 1973. We have owned a 1974, 1977, 1984, 1990, 1981, 1993 and now own a 1970 and 1982 Westfalia Camper.

Type 2 notes of interest;

This vehicle started on the production line 8-12-69 in Emden, Germany.

It was delivered to the Philadelphia-Baltimore area

The Type 2 is a 1 ton truck rated to carry 2000 lbs.

The Volkswagen Bus turned 60 on October 6, 2007 and ceased production in 2014

We have found everyone has a VW Bus story usually about a lack of "heat" and "power".

The Type 2 Bus was also manufactured in Brazil until 2014 with a flex-fuel, water cooled engine capable of running on pure ethanol!



### Leonard Rutledge's First Car:

When my father passed, this picture was found in his billfold. It was (my) first car. He also built a go cart with a Cushman 2- speed transmission.

## SHIRTS:

We have increased our MMOCC Shirt Inventory. We have T-shirts in gray and white, collared polo-type shirts, and a humorous T-shirt addition. If your shirt looks dingy, time to upgrade! Shirts available at future meetings and events.

## OSAGE RIVER "BRIDGE" HISTORY:



The original Osage River bridge is shown from Huber's bluff. Built in 1911-23, the bridge was replaced by a second span in 1950-60. The cathead towers were nearly useless at the time of their construction. River freight traffic was near its end in 1922, and it is said that few river steamers ever passed under the elevated center span.



Lock and Dam, Osage River, Jefferson City, Mo.

# Upcoming Events that MMOCC Plans to Attend

A. **Roaring 20s at the Governor's Mansion (was May 16) – CANCELED.**

B. **May Meeting (was May 28) – CANCELED as meeting rooms are not available in the Community.**

C. **Swinging Bridges Tour.**

- Saturday, May 23 (originally planned for May 16).
- Caravan leaves Blair Oaks High School at 9am.
- Arrive at Kemna Swinging Bridge in St. Elizabeth at 9:45am.
- Arrive at Swinging Bridges Road in Brumley at 11:30am.
- "Tailgate/Trunk" picnic lunch (bring your lunch, drinks, hand sanitizer, and chairs).
- Depart back to Jefferson City at 12:30pm.
- Back at home for a nap by 2:30pm.

D. **Capital Mall Cruise In.**

- 4pm to 8pm.
- May 30 / June 27 / July 25 / August 29 / September 26.

E. **Sheriff's Barbeque Car Display (was June 2) – CANCELED.**

F. **MMOCC Poker Chip Run.**

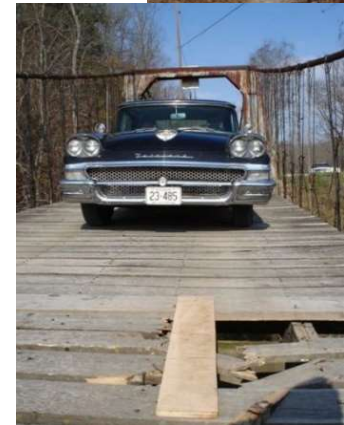
- Saturday, June 20 at 9am.
- Arrive Gerbes off Eastland at 9am. Caravan Departs at 9:30am.
- 35 mile total trip, taking about one hour.
- Returning for lunch at El Jimador off Eastland by Gerbes (same as the starting point). Ability to have lunch depends on Coronavirus limitations.

G. **THE GREAT RACE visits Rolla.**

- Tuesday, June 23 at noonish.
- The Great Race has a lunch stop in Rolla.
- Caravan from Gerbes near Eastland leaving at 10am.
- Check out the cars and talk to the drivers.
- In 2018, the Epples from Jefferson City hosted MMOCC at their hanger and taught us about The Great Race. They will participate again in 2020.
- <https://www.greatrace.com/route>

H. **June Meeting.**

- Thursday, June 25 at 6pm.
- Braun-Be-Que.
- Arrive as early as 4:30 with Meal at 6 and meeting to follow.
- Kenny Braun's Lake at 9404 Route B (south of the B and E intersection) 573 496 3639 or 573 821 2586.



**I. Sonic Summer Nights – MMOCC Caravan.**

- *Always the Third Saturday of the Summer Months.*
- July 18 caravan leaves Schultes at 3:30pm.
- Sonic in Versailles.

**J. July Meeting.**

- The Wes Scott Swap!
- Thursday, July 23 at 6pm.
- *(Moved to July in 2020 from August).*
- Wes and Betty Scott's – 7311 Old Bass Road / Eugene.
- Swapping starts at early at 4pm with meal at 5:30pm. Meeting at 6pm.

**K. Argyle Knights of Columbus Car Show.**

- Argyle, Missouri.
- Saturday, August 8 at 11am.

**L. Kelsey Tire – Vintage Tire/Cars.**

- Date to be determined.
- Caravan leaving Schultes at 8:30am arriving about 9:30am
- 1190 East Highway 54 / Camdenton.
- Tour until about noon.
- Lunch after at a location TBD.

**M. August Meeting.**

- Thursday, August 27 at 6pm.
- Location and topic to be determined.

**N. Truman VA and Vet Center Car Show.**

- Truman VA Medical Center, Columbia, Missouri.
- Saturday, September 19. 10am to 2pm.
- MMOCC caravan from the North Jefferson City Commuter Lot departing at 9am.

**O. Ozark Ham and Turkey Festival.**

- Downtown California, Missouri.
- Saturday, September 19. 9-4.
- MMOCC caravan from the Farmers Bank of Lohman in St. Martins departing at 8:30am.
- "Cars and More" Show (Cars, Tractors, etc.) and small-town Parade (optional).

**P. September Meeting.**

- Thursday, September 24 at 6pm.
- Car Show Details.
- Location to be determined. Might be Stan Fast's back yard.

**Q. Old Car Round Up and Show.**

- Saturday, September 26.
- In conjunction with JC Oktoberfest.



## R. October Meeting.

- Thursday, October 22 at 6pm.
- Car Show Recap.
- Location to be determined.

## S. Eugene PTO Car, Truck, and Bike Show.

- Cole R-V High School in Eugene.
- Saturday, November \_\_\_\_ 9am to 2pm. Registration ends 11am.
- \$15 pre-registration. \$20 day of.

## T. ETET (Eddie Tremain Ethanol Tour).

- Wednesday, November 11, 2020 (Veteran's Day). Sorry, they do not do weekend tours.
- Tour of POET Biorefining (Ethanol Plant) at 809 North Pine in Laddonia, Missouri. <https://poet.com/>
- Depart North Jefferson City Commuter Lot at 8:15am, arriving in Ladonna at 10ish for a 90 minute tour.
- Lunch at Hobo Bar and Grill at 106 Chestnut in Laddonia.
- Possible afternoon tour of Missouri Plant Science Center or Zenith Aircraft in Mexico, Missouri.

## U. NO November or December Meetings.

- Attend the Holiday Party and New Year's Day Cruise, instead.

## V. MMOCC Holiday Party 2020.

- Tuesday, December 1, 2020 at 6pm.
- American Legion / Tanner Bridge / JCMO.

## W. 2021 New Year's Day Cruise.

- Friday, January 1, 2021.
- Lunch and Garage Tours.
- Need YOUR GARAGE as a destination. Contact Dennis Smith.

## Officers:

President Lyle Rosburg  
Vice President Dennis Smith  
Secretary Vacant (it could be you!)  
Treasurer Tom Webb  
Historian Roger Hager  
Events Chair Ron Clark  
Car Show Chairs Tom and Karen Winters  
Immediate Past President Nathan Fuller



# PETTICOAT JUNCTION TV SHOW - HISTORY



The idea for Petticoat Junction came from Paul Henning's wife, Ruth. Paul Henning said, "The Shady Rest was based on a real hotel in Eldon, Missouri, run by my wife's grandmother... that's where the hotel and the train and the whole setting came from, from Ruth's reminiscences of visiting her grandma." [9] Ruth Henning told him stories of her childhood adventures at the Burris Hotel, which was owned by her grandparents in Eldon.[10] Once called the Rock Island Hotel, the Burris was located next to the now-derelict Rock Island Line railroad tracks. Ruth Henning's mother, Alice (Burris) Barth, also told her many stories about the hotel and about growing up in the small town of Eldon.[11] The stories of Ruth and her mother, Alice, became the basis of the show. Linda Kaye Henning said that her father, "wrote the series for Bea Benaderet." [12] Paul Henning thought the show would make an ideal starring vehicle for the veteran character actress. Since the 1930s, Benaderet had played second banana roles on radio and television to such personalities as Jack Benny, Lucille Ball, and George Burns and Gracie Allen. She was an uncredited voice actress for many Warner Bros. cartoons, and provided the voice of Betty Rubble on The Flintstones. She also played the semiregular character Cousin Pearl Bodine on season one of The Beverly Hillbillies. Henning felt that Benaderet had more than paid her dues and had earned the right to headline her own series. During preproduction, proposed titles for the show were Ozark Widow, Dern Tootin' , and Whistle Stop.

Mid Mo Old Car Club  
PO Box 1594,  
Jefferson City, MO 65102

