



# MMOCC Newsletter –

## JUNE 2025

*Mid Mo Old Car Club  
PO Box 1594,  
Jefferson City, MO 65102*

### PRESIDENT'S CORNER

A rugged guy walks into a tavern with a pair of jumper cables around his neck. The bouncer says "You can come in, but don't start anything."

This month's meeting is between Memorial Day and the 4th of July. I thought this would be a great time to thank all the veterans for their service to our country.

This month's meeting will be at The Timbers Assisted Living Community (at 239 Karen Drive in Holts Summit, east of 54, just south east of the Main Holts Summit exit / OO-AA.). I'm asking as many as possible to bring their classic cars to this one as most of these folks don't have the opportunity to see fine looking classic cars very often. I'll see you there!



### FROM 2024

<u>Gates</u>		<u>Table (8:00 am - 12:00 pm)</u>	
<u>Cedar Way and Broadway (7:00 am - 11:00 am)</u>		Billy Bonnot	573-619-2334
Stan Fast	573-635-6740	Justin Colvin	573-694-6813
Brent Scott	573-999-4120	Karen Winters	719-660-7168
		Tom Winters, Jr.	573-533-1294
<u>Broadway and Ashley (7:00 am - 11:00 am)</u>		<u>Door Prizes and Goody Bags (8:00 am - 12:00 pm)</u>	
Doug Stephens	573-632-2895	Wes Scott	573-694-9221
Gary Waggoner	573-338-1072	Tom Webb	573-259-1851
<u>Dunklin and Mulberry (7:00 am - 11:00 am)</u>		<u>50/50 and Quilt Drawing Sales (8:00 am - 2:00 pm)</u>	
Ron Clark	573-230-2780	Angela Laws (Quilt)	573-691-1418
Ricky Mendez	573-636-2277	Dan Mesey (50/50)	573-291-2351
<u>Dunklin at the Vendor Area (7:00 am - 11:00 am)</u>		<u>Pictures / Video (10:00 am - End)</u>	
Brocke Laws	573-645-1040	Kent Moreland	573-230-3738
<u>Parking Cars (7:00 am - 11:00 am)</u>		<u>Awards Table (2:30 pm - 3:30 pm)</u>	
Chris Reinke	573-821-9147	Tim Petty	573-694-2977
Larry Rhea	573-606-9266	Lyle Rosburg	573-291-7159
Tim Petty	573-694-2977		
<u>Judging (10:00 am - complete)</u>			
(A) - Paint / Finish	Frank Haselhorst / Steve Hall	573-508-8714 / 573-619-4317	
(B) - Body / Workmanship	Frank Haselhorst / Steve Hall	573-508-8714 / 573-619-4317	
(C) Wheels / Tires	Craig Haugen / Nathaniel Fuller	573-893-2049 /	
(D) - Undercarriage	Craig Haugen / Nathaniel Fuller	573-893-2049 /	
(E) - Top / Roof	Lyle Rosburg	573-291-7159	
(F) - Upholstery / Interior	Ed Hammond		
(G) - Lamps / Bright Work	Lyle Rosburg	573-291-7159	
(H) - Engine Compartment	Richard Heibredner	573-690-1826	
(I) - Accessories	Richard Heibredner	573-690-1826	
(J) - Overall Authenticity	Floyd Siebeneck / Dennis Smith	573-496-3531 /	
Clip Boards	Linda Tremain / Linda Bogg / Linda Smith		
Runners	Kora Colvin / Laura Moreland		

# SCHOLARSHIP INFO AND APP

We support interest in the automotive field!  
MMOCC Scholarship.

Eligibility:

Applicants must be a MMOCC member or be sponsored by a MMOCC member.  
Applicant must be enrolled in a technical school, community college, or four year college.

We would encourage those seeking a vocation in the automobile industry, or related, to apply. Awards will be based on academic performance. Career goals and other information to be provided on the application form.

Deadline: July 31 each year.

Applications to be received by July 31 of each year and will be awarded by the end of September each year, usually at the MMOCC Old Car Roundup / Car Show.

YOU ARE THE ADVERTISING COMMITTEE! Get the word out, handout flyers to grandkids, neighbors, etc.

## Mid Mo Old Car Club Scholarship Application

First Name \_\_\_\_\_ MI \_\_\_\_\_ Last Name \_\_\_\_\_

Address \_\_\_\_\_ City \_\_\_\_\_ State \_\_\_\_\_ Zip \_\_\_\_\_

Date of Birth \_\_\_\_\_ Phone Number \_\_\_\_\_

Name of MMOCC member that recommends you for this scholarship \_\_\_\_\_

How are you related to this member? \_\_\_\_\_

Name & location of school you plan to attend \_\_\_\_\_

Have you enrolled? \_\_\_\_\_ Major or course of study \_\_\_\_\_ Future occupation \_\_\_\_\_

Will you be a full time student? \_\_\_\_\_ If not, how many hours do you plan to take? \_\_\_\_\_ hours

High School GPA \_\_\_\_\_ ACT Composite Score \_\_\_\_\_  
(4 pt. scale)

**Write a paragraph about yourself to help the MMOCC Scholarship Committee know about your plans for the future and how you intend to pay for your education. Tell us about your interests, career goals and hobbies.**

*You may write on the back of this sheet or attach another sheet if you need more space.*

---

---

---

---

---

---

---

---

---

---

Signature of applicant \_\_\_\_\_ Date \_\_\_\_\_

*Please attach high school transcript if available.*

**Submit to the MMOCC Scholarship committee or mail to :**  
**Mid Mo Old Car Club P.O. Box 1594 Jefferson City, MO. 65102**  
*Must be submitted by July 31 rev 5/19*

The Mid Mo Old Car Club Scholarship Amount: \$1000.00

Eligibility: Applicants must be a MMOCC member or be sponsored by a MMOCC member. Applicant must be enrolled in a technical school, community college, or four year college. We would encourage those seeking a vocation in the automotive industry, or related, to apply. Awards will be based on academic performance. Career goals and other information provided on the application form.

Deadline: Applications must be received by July 31 of each year and will be awarded by the end of September of each year.

Applications may be obtained from club members, the scholarship committee or by writing to :

Mid Mo Old Car Club P.O. Box 1594 Jefferson City, MO. 65102

<https://midmoolldcar.club/scholarship>



# WAS IT A TEST?

Last month's newsletter included an article about using a 1939 Chevrolet to travel the Mississippi River. Sharp eyed readers noted the photo was a bad AI image. Thanks to MMOCC Member Donald Scott, the actual photo and caption is shown. (The published article might not be accurate, either.)

Can't believe everything you see on the internet!

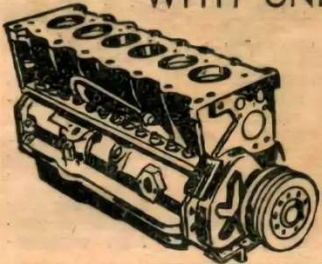


June 21 1955. Sam Gray, David Rutford and Fred Hallberg begin their cruise down the Mississippi river from Saint Paul Minnesota on a homemade raft. The raft was built of barrels and planks. Power for the propeller was provided by a 1939 Chevrolet they had paid \$ 15 for. the car ran 172,000 miles on it. The rear wheels of the car ran against another set of wheels which turned the propeller. The car's steering wheel turned the raft's rudder. In Saint Louis Missouri the men had a delay as the Chevy's valves needed to be ground. Outside of Memphis Tennessee a bearing on the propeller shaft burned out but the men were able to repair it with tools borrowed from a barge crew. The men ran low on food as they discovered a stowaway was eating their food. The stowaway was a rat. The men tried fishing for food but caught nothing the entire trip. Other problems encountered included mosquitoes, driftwood in the river and backwash from passing barges. On July 25 1955 the trio reached New Orleans. They planned to drive the Chevrolet back to Minnesota. Epilogue. The three men made it back to Saint Paul driving the Chevrolet in 49 hours. The car used five gallons of oil for the return drive.



## STOP!

**DON'T SWAP!**  
ADD THOUSANDS OF EXTRA  
MILES TO PRESENT CAR  
WITH ONE OF WARD'S



## REBUILT MOTORS

FULLY GUARANTEED

1941-56 DODGE - \$169.95 EXCHANGE  
WITH HEADS - STANDARD TRANSMISSION

1949-53 FORD - \$179.95 EXCHANGE  
V-8 - WITH HEADS

See "Spike" Hastings, "Bunky" Brittingham, John Gidden

## MONTGOMERY

## WARD & CO.

MAIN STREET

SALISBURY

**"SOME OF THE 77 ALL-NEW MODELS WE'VE  
INTRODUCED SINCE 1985,  
ALL RE-DESIGNED AND ENGINEERED  
TO DRAMATICALLY IMPROVE QUALITY!"**



**PUTTING QUALITY ON THE ROAD**

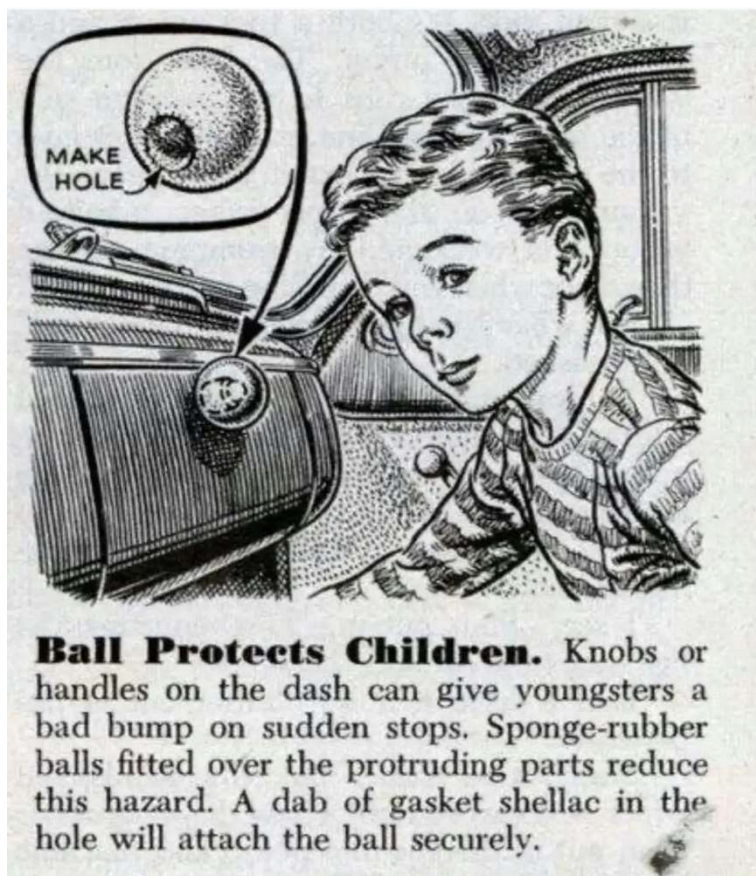




OFFICIAL CONVERSION CHART  
HOW TO INTERPRET  
ANTIQUE CAR ADS

IF IT SAYS:	IT REALLY MEANS:
Rare model.....	Nobody liked them when new either
Older restoration.....	Can't tell it's been restored
Needs engine work.....	It's been frozen for 30 years
Uses no oil.....	Just throws it out
No rust.....	Body and fenders missing
Rough.....	It's too bad to lie about
One owner.....	Never been able to sell
No time to complete.....	Can't find parts anywhere
Needs interior.....	Seats are gone
Rebuilt engine.....	Has new spark plugs
May run.....	But it never has
Low mileage.....	Third time around
Many new parts.....	Keeps breaking down
29 coats hand-rubbed paint.....	Needed that much to cover rust
Clean.....	It sat out in the rain yesterday
Best offer.....	About what I expect to get
Always driven slowly.....	Won't go any faster
Prize winner.....	Hard luck trophy 3 times in a row
Stored 25 years.....	Under a tree
Real show stopper.....	Orange with purple fenders
Easy restoration.....	Parts will come off in your hand
Ready to show.....	Just washed it
Top good.....	Only leaks when it rains
Good investment.....	Can't depreciate any more

On April 21, 1967, **General Motors** manufactured its 100 millionth car in the U.S., a **Chevrolet** Caprice Custom Coupe two-door hardtop that rolled off the assembly line in Janesville, Wisconsin. [#ThisDayInAutoHeritage](#)



In **1971**, the Nova was rebranded as other GM models:

<b>Chevy</b>	<b>Nova</b>
<b>Oldsmobile</b>	<b>Omega</b>
<b>Pontiac</b>	<b>Ventura</b>
<b>Buick</b>	<b>Apollo</b>

The initials of the model Names spelled **NOVA!**

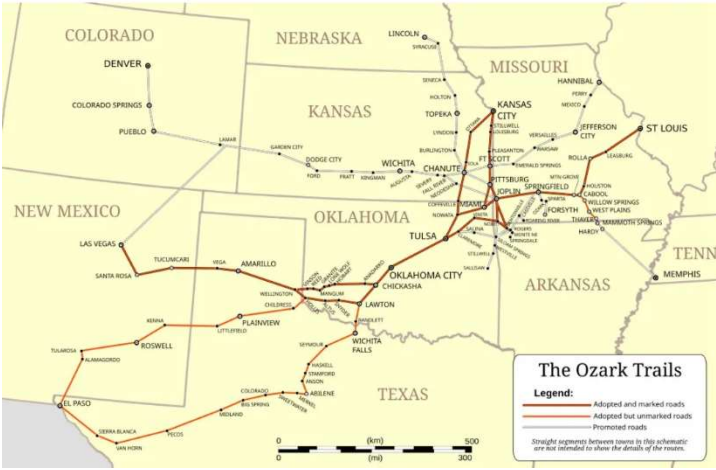




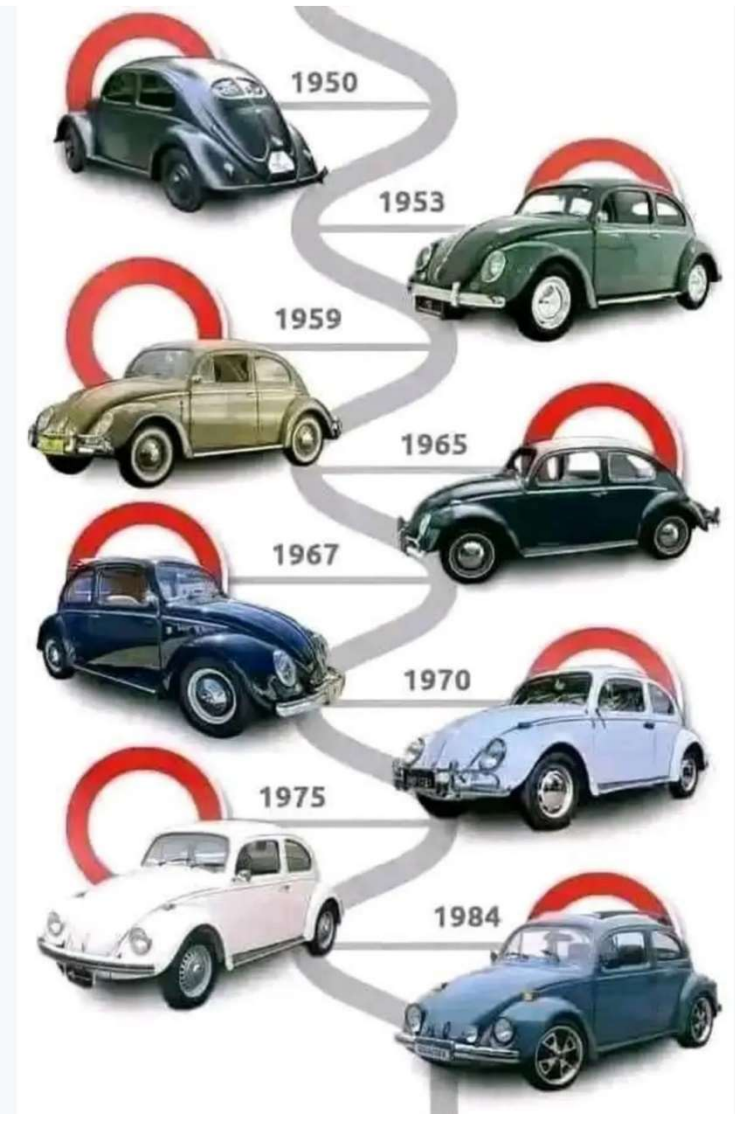
The Ozark Trail Highway was a short-lived but significant cross-country highway organized by the Ozark Trails Association, established in 1913. These roads comprised the primary highway system in the region until U.S. Highway 66 was built in the 1920s.

Take a ride on Ozark Trail Highway <https://www.legendsofamerica.com/ozark-trail-highway/>

[image: The Ozark Trails map, courtesy Wikipedia]



# Volkswagen Beetle 🔥🔥



## Goodbye Old Paint

Anti-EstablishMint  
Hulla Blue  
Original Cinnamon  
Freudian Gilt  
Thanks Vermillion

**FORD MAVERICK \$1995\***

When you make a maverick car, you paint it maverick colors. Bright, bold colors with names to match. (Who says economy has to be dull?) But Maverick gives you much more. You get a car that rivals the economy imports in price—and tops them in power, performance, and room.

Maverick's six lets loose 105 horses. You get to 70 mph (turbo speeds in a hurry. More good news: Maverick's gas mileage is what you might expect in an import.

Maverick is nimble in traffic. And you'll slip into parking places you've passed up for years. The wheelbase is 8" shorter than a '69 Falcon's. The turning circle (35.6 ft.) is even shorter than a VW's.

Inside: cheerful interiors and room for U.S.-sized people. The front seat gives you 9" more shoulder room than a VW's. In back, a real trunk (10.4 cu. ft.). No more going off half-packed!

Maverick is designed to be unusually easy to service. And there are over 6,000 easy-to-find Ford dealers to handle Maverick parts and service. So say farewell to old paint. Say goodbye to old-style driving. Say hello to Maverick, the first car of the 70's... at 1995 prices.

For each model of Ford Maverick, send \$1 to Maverick, P.O. Box 5287, Dearborn, Michigan 48111. Offer ends 7-31-80.

\*Manufacturer's suggested retail price for the car. Price does not include optional white sidewall tires, \$35.00; dealer preparation charges, \$ any; transportation charges, state and local taxes.



The Chicago–Kansas City Expressway, also known as Illinois Route 110 (IL 110) in Illinois and Route 110 in Missouri, is a highway connecting Chicago, Illinois, to Kansas City, Missouri. Established on May 27, 2010, the expressway was designed to provide a continuous route between these two major cities. [OBJ]

#### Route Overview:

- **Illinois:** The expressway begins in Chicago, following the Eisenhower Expressway (Interstate 290) westward from the Jane Byrne Interchange (Interstate 90/94/290) to the Ronald Reagan Memorial Tollway (Interstate 88). It then continues along I-88 into western Illinois before connecting with other interstates and highways. [OBJ]
- **Missouri:** In Missouri, the route starts in downtown Claycomo on I-35, heading northeast. In Cameron, it turns east on US 36, traversing the state via Chillicothe and Macon. East of Hannibal, the route continues east on I-72 through Hannibal and across the Mississippi River. [OBJ]

#### Designation and Signage:

The expressway is marked with the Route 110 designation and the “CKC” logo along its path in both Illinois and Missouri. [OBJ]

#### Criticisms and Observations:

Despite its establishment, the Chicago–Kansas City Expressway has faced criticism regarding its practicality and usage. Some argue that the route is functionally obsolete, as alternative paths, such as taking I-55 to I-72, are shorter and more direct between Chicago and Kansas City. Additionally, the expressway comprises various road types, including four-lane arterial routes with limited-access sections, which may not offer consistent high-speed travel throughout. [OBJ] [OBJ]

In summary, the Chicago–Kansas City Expressway serves as a designated route linking two major Midwestern cities, utilizing existing highways and interstates to create a continuous corridor. However, its effectiveness and efficiency compared to alternative routes remain subjects of discussion among travelers and transportation analysts.





# Upcoming Events that MMOCC Plans to Attend:

## A. Sonic Hot Summer Nights.

- Third Saturday of each month from May to September from 6-10
- Sonic in Versailles.

## B. June MMOCC Meeting.

- Thursday, June 26 at 6pm.
- Bring out your old car for Cruise In at **The Timbers Assisted Living** at 239 Karen Drive in Holts Summit, east of 54, just south east of the Main Holts Summit exit / OO-AA.
- Show off your car and chat with the residents.

## C. GOBMC British car show - Springfield MO

- June 27-28 <https://gobmccarshow.com/show-details-1>

## D. Missouri Moonshiners Street Rod Club 5<sup>th</sup> Annual Poker Run.

- Saturday, June 28. Registration at 10. Depart at 11. Done by 4.
- Register and depart Horton's Auto Sales (1008 E. Main in Linn). Final stop The Barn in Loose Creek. Additional stops in Rosebud, Owensville, and Westphalia.
- Organized by Tom Brandt (573-644-4478)

## E. Car Show at Taos Countryside Park.

- Saturday, June 28. 3pm-8pm. In Taos.
- No cost. Contact Tom Weiberg at 573-619-7043.

## F. Monthly Capital Mall (JC) Cruise In.

- Last Saturday of each month from April to September. 3-7pm.

## G. Capitol Cruise In (JC) East Capital at Madison.

- Last Saturday of each month from March to September. 5-9pm.

## H. Lohman Cruise In.

- Sunday, June 29 from 10:30am to 2pm in Lohman on Front Street "by the big tree".
- Bring a chair and cooler. Come and go as you please. Contact Lyle at 573-291-7159 with questions.
- Lions Club BBQ available at the Community Center from 10:30am until out.
- Fireworks at the Church at 9pm by Dennis and Laura Even.



### I. "Salute to America" Cruise In.

- West Capitol Avenue and north of the Capitol.
- Friday, July 4. 3-6pm. <https://www.salutetoamerica.org/>
- Help requested to park cars. No judging duties.
- Contact Larry Rhea (573-606-9266).



### J. Holts Summit Pizza Hut Old Car Cruise In.

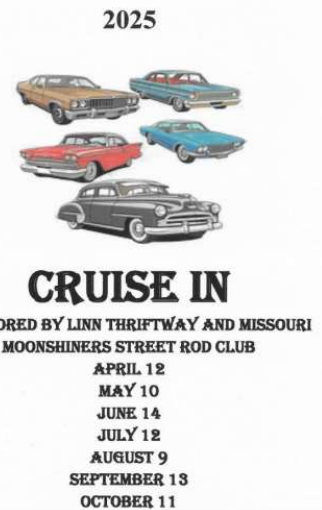
- First Saturday of each month from April to October. 4:30-8pm.

### K. Missouri Moonshiners Street Rod Club Cruise In.

- Second Saturday of each month from April to October. 5-8pm.
- Thriftway in Linn. Contact the Evens at 573-291-6209 if questions.

### L. MMOCC Evening Cruise.

- Thursday, July 10. Leaving at 7:30pm.
- Just a short cruise through the countryside when it is cooler.
- Gerbes East parking lot / 2101 Schotthill Woods Drive.
- A short 1 hour drive.
- End at Daisy Delight for ice cream (optional).
- Contact Larry Rhea (573-606-9266).



### M. July MMOCC Meeting / Trunk Swap.

- Thursday, July 24 with Swapping starting at 3. Meal about 5. Meeting about 6.
- Bandelier Mustang Connection. 102 Route T / JCMO. (NE of the intersection of Rt.T Bus.50) (Best access on Bus.50 across from Farmers Bank of Lohman).
- All the usual participants are, of course, invited, and guests are welcome.
- Probably just a hot dog roast or something simple.
- Bring lots of stuff to swap or sell (garden vegetables expected) and cash to buy.
- Plenty of parking. Bring chairs and your favorite beverages.

### N. Argyle K of C Car Show and BBQ.

- Saturday, August 9 at 11am.
- 513 Second Street in Argyle, MO.

### O. August MMOCC Meeting – BBQ at McClung Park.

- Thursday, August 28. McClung Park Indoor Pavilion (air conditioned). 931 McClung Park Drive / Jefferson City, MO.
- Arrive as early as 5. Meal at 5:30. Meeting at 6. Indoor BBQ. Bring a side to share and bring your own beverages. Pulled pork, plates, and utensils provided by the Club.
- Contact Connie Schaefer with questions at 573-690-5954.
- In September 2021, John Kelsey hosted MMOCC to view his closed car museum / collection in Camdenton. John died in September 2023. His collection was sold through Mecum Auctions. His





daughter, Ann Kelsey-Doughty, the President of Kelsey Tire and co-owner, will present about Kelsey Tire, its history, Good Year connections, and the auction process.

**P. Russellville Schools – Wheels for Meals.**

- Saturday, September 13 9am-2pm.
- Russellville High School / 13600 Route C.
- Fundraiser to pay off student lunch debt.
- \$20 entry fee. Pedal Car Class for \$5. Food trucks available.
- <https://www.facebook.com/events/1292651495179528/>

**Q. September MMOCC Meeting.**

- Thursday, September 25 at 6pm.
- HyVee-JC Community Room (upstairs). Room is available at 5pm, so get your meal and come upstairs and dine together.
- Topic: MMOCC Car Show on September 27.

**R. MMOCC Old Car Round Up and Show.**

- 56<sup>th</sup> annual.
- Saturday, September 27, 2025.
- In conjunction with JC Oktoberfest.

**S. October MMOCC Meeting.**

- Thursday, October 23 at 6pm. Location and topic TBD.

**T. Brother Bob Folk Fall Colors Tour (BBFFCT)**

- Saturday, October 25, arriving as early as 10am at the church parking lot in Folk (Osage County), leaving at 11am.
- Lunch at a surprise location.
- About two more hours after lunch, ending around Loose Creek.
- Travel as long as you would like and cut out early, if needed.
- Organized by Dennis and Laura Even. Questions? Contact Dennis at 573-455-2948 or Laura at 573-291-6209.

**U. NO November meeting.**

**V. December Meeting / Holiday Party.**

- Thursday, December 18, 2025. Arrive as early as 5pm. Meal about 6pm.
- American Legion off Tanner Bridge.
- Meal provided by the Club.
- Bring a rob-your-neighbor gift for your gender valued around \$25. Be creative!

**MMOCC SHIRTS:**

We have T-shirts in gray and white, collared polo-type shirts, and a humorous T-shirt addition. If your shirt looks dingy, time to upgrade! Shirts available at future meetings and events. \$20 for collared shirts. \$15 for t-shirts. \$10 for hats. Contact Norm Hicks at 573-632-9055.



**Officers:**

President Nathan Fuller (573-645-7088)

Vice President Doug Stephens (573-632-2895)

Secretary Lyle Rosburg (573-291-7159)

Newsletter Editor Lyle Rosburg (573-291-7159)

Treasurer Larry Rhea (573-606-9266)

Historians Mike and Connie Schaefer (573-645-7802)

2025 Car Show Chair – Nathan Fuller (573-645-7088)

*Mid Mo Old Car Club  
PO Box 1594,  
Jefferson City, MO 65102*

