

VOL. 1 ISSUE 1 · MAY 2023

LAKE LIFE

Official Newsletter of Emerald Lake Regional Park

Emerald Lake is located on the traditional lands of İyāhē Nakón maḳóce (Stoney), Očhéthi Šakówiŋ, Michif Piyii (Métis), and Cree. Treaty 6 Territory.



Welcome Back To Emerald!

BY CRISPI LORD

A big hearty welcome to our cabin owners, season campers, campers and day trippers!

Hello to you from me, your new park manager! I am so glad to be out in the wild, and am enjoying my time in the park already. In the offseason I run Wide Open Children's Theatre in Saskatoon and I am so glad to bring my skillset to the park. I look forward to meeting you all and getting to know you!

ELRP would like to thank Damen Van Meter for his hard work over the past two seasons and I have big shoes to step into. We wish him well on his future career as a pharmacist!



FIRE BAN

There is currently a fire ban in our community. Watch our social media for updates.

This issue:

Welcome Back to Emerald!

PAGE 01

Jumping in With Both Feet

PAGE 02

Life In The Wild

PAGE 03

Community Connections

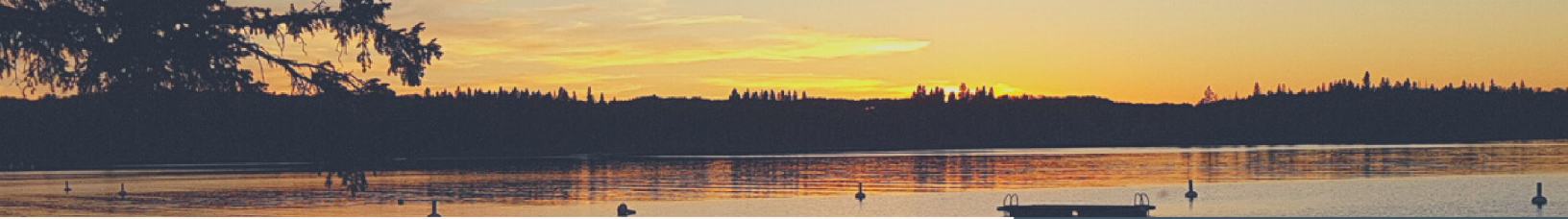
PAGE 04

Board and Hiring
Information

PAGE 04

Announcements, Events,
and Updates

PAGE 05



Jumping In with Both Feet

BY TODD BRANDT

31 volunteers did an awesome job on May 6 for our annual Golf Course Spring Clean-up. Special thanks from Judy and I for those who were able to participate. ALL of the jobs listed below were completed. The crew managed to drop 3 major poplar trees, which combined had 7 main trunks. With everyone's efforts all the branches etc. were moved to the burn pit or to the free wood pile beside the burn pit (help yourself!). In early June Neil will be removing the large trunks left behind with his Skid Steer and Grapple.

Next up is our Two-Green installation weekend on June 10 and 11. Details will follow closer to the date so I will try not to bug you for the next four weeks. Cheers and enjoy your spring-time at the Park – make sure you get out for some rounds of golf.” Everyone is welcome at volunteer days!



Important Dates 2023

- May 15: Opening Day at ELRP (Emerald Lake Regional Park)
- June 10-11: Golf Green Instalation Days
- July 1: Canada Day Celebrations
- July 8: AGM @10:00 a.m.Happy Homesteaders in Leask, SK
- August 5-7: EmFest - A celebration of park life!
- August 7-11: Swimming Lessons
- August 14: Photo Contest Deadline
- September 2: Staff & Board Season Wind Up

"There's only one way to tackle life, enjoy a day at the beach, and jump into a great lake; **HEADFIRST**"

VIOLA SHIPMAN

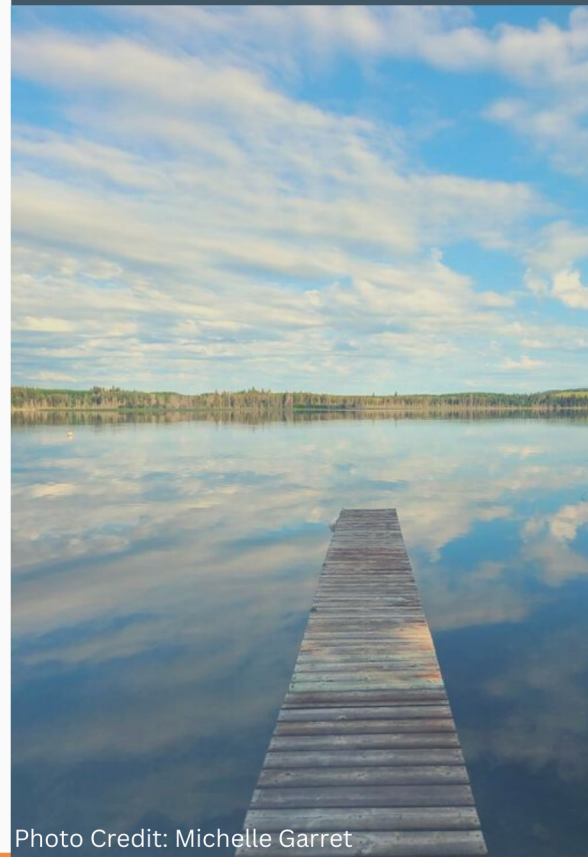


Photo Credit: Michelle Garret



Life In The Wild

Bear numbers continue to be high. All food and garbage needs to be in a bear-proof container – this means; cabin, camper, car or the newly updated bear proof dumpsters. There will no longer be garbage pickup at individual sites (including cabins, seasonals and campers). Bear proof garbage containers have been installed at both stores.

The lake is home to much of the wildlife we love. To keep the water clean and the wildlife safe only biodegradable/reefsafe sunscreens, lotions and bugsprays should be worn at the water.



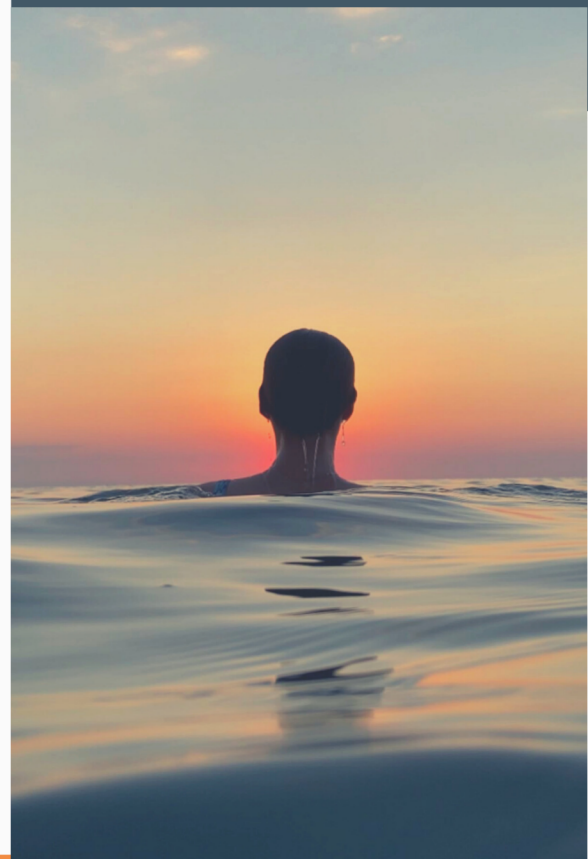
Emergency Preparedness

Our park is far enough that any emergency will involve a STARS visit. The park is arranging training to be ready for their arrival. That arrival takes time and we want to be able to help as much as possible.

We are creating an emergency text group that includes First Responders in the park. This group would be messaged in situations where a 911 call/STARS are involved. If you are a certified First Responder, Doctor, Nurse or other qualified individual and want to be included please email elrpmanager@outlook.com

"The best way of being kind to bears is not to be very close to them"

MARGARET ATWOOD



Community Connections

We would love to reach you with the latest happenings at Emerald and our social media is one of the best ways! If you don't do it yet we encourage you to check out Instagram. You can see pictures of the park and share your own with us! It's a great way to follow subjects that interest you as there are groups for everyone - even little communities like ours.

INSTAGRAM

emeraldakesk



FACEBOOK FB GROUP

emeraldakesk



A place to buy/sell, chat, share stories.



WEBSITE

Notices, policies, minutes & more



We Are Hiring:

ELRP is on the lookout for more store staff. Work in the park you love! Full and part time options available.

email for details

Don't want to work more than a few hours a week? Kids activity helpers are needed!

The Bottle Crew will also re-appear this season; volunteer to sort recycling and you can be rewarded with a treat!

Watch the bulletin board for details

Meet Our Dedicated Team:

Trevor Cross - Chair

Chris Crocket - Vice-chair

Joan Sanftleben

Lee Jaboeuf

Charles Smith

Brad Butler

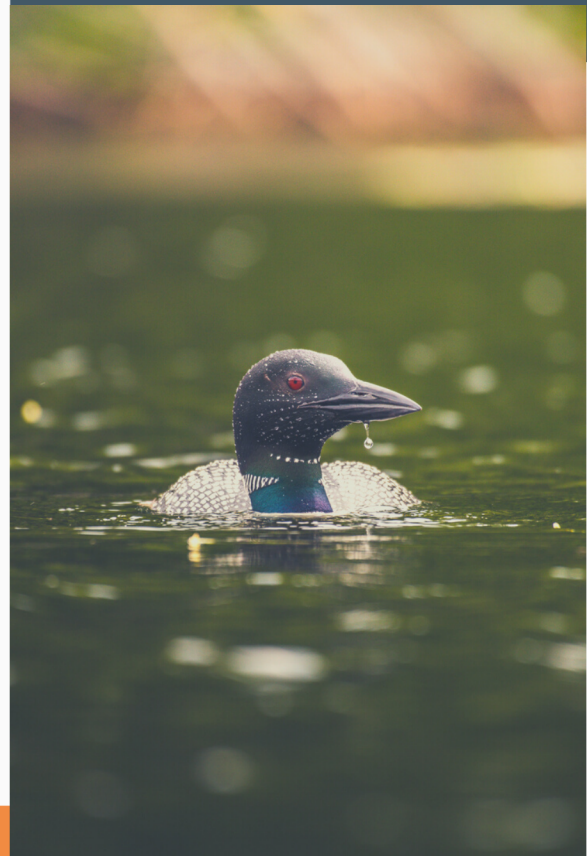
Secretary/Treasurer - Chelsey Watts

Park Manager - Crispi Lord

Thank you to the [Shell Lake Lions Club](#) for delivering our annual welcome packages to the park. These always have useful information on connecting with the greater community. If you see a Lion in the park be sure to thank them!

“Even a pebble cast in the middle of a lake creates ripples that eventually reach the shore.”

JEFFREY G. DUARTE





Sask Regional Parks Grant Update

The work we do around the park is supported by grants from Sask Regional Parks. Grants from last season included:

- Golf Course Grass Greens - Phase 3
- Outhouse Rejuvenation - Phase 1
- Campsite Upgrades - Phase 2

These projects were completed and we look forward to more updates this season:

- Zoning bylaws - Phase 2
- Golf course grass greens - Phase 4 - Final three holes
- Outhouse rejuvenation - Phase 2
- Campsite upgrades - Phase 3 - Finish remaining picnic tables and firepits

We would like to thank SRPA for the work they do to support us!



Season Passes

Seasonal passes and Seasonal Camping Agreement receipts will be available at the Main Concession as of May 15th with your park package.

Main/Gate Store Spring Hours are:

- Monday - Thursday 9am-5:30pm (closed 1pm-2pm)
- Friday - Sunday 9am to 9pm

Once again this season Sask Regional Parks has also made park passes available through the network of Saskatchewan Libraries! One week passes are available on a limited basis at your local branch.

“Of all the paths you take in life make some lead to the lake.”

UNKNOWN

