

## TRIP DETAILS

**INSIDE (IA)**  
\$6,830 dbl/\$8,375/sgl

**OCEANVIEW (OA)**  
\$7,150 dbl/\$9,020 sgl

**BALCONY (BA)**  
\$7,710 dbl/\$10,140 sgl

Reserve early. All cruise ship staterooms subject to availability at time of registration.

**Includes Premium Beverage Package, Ultimate Dining Package, Internet Package\*, and Shore Excursion Credit\***  
(\*excludes Inside Staterooms)

**Optional Travel Insurance:**  
based on tour price

\$6,001-\$7,000 - \$644  
\$7,001-\$8,000 - \$736  
\$8,001-\$9,000 - \$826  
\$9,001-\$10,000 - \$916  
\$10,001-\$11,000 - \$1,038

## BOOKING IS EASY!

Call 715-619-6064  
for reservations.

Payment requested within  
7 days of booking.

Make check payable to:  
On The Go Bus

Mail registration form  
with check to:  
PO Box 2,  
Elmwood, WI 54740

**A minimum \$500 deposit  
per person is required with  
your registration form.**

**FINAL PAYMENT IS DUE  
MARCH 1, 2024**

## EARLY BIRD SAVINGS

\$100 if paid in full by Nov. 1  
No other discounts apply

# Alaska Land & Cruise

July 11-22, 2024

Discover Alaska on this 12-day land and cruise tour aboard Norwegian Jewel. Arrive in Anchorage, the city that achieves the perfect blend of metropolitan and outdoor living, to begin your land tour. Make your way along the jaw droppingly beautiful Kenai Peninsula to Seward, Alaska. Here you will board the ship for some of Alaska's most scenic destinations. Watch for humpback whales, porpoise, and sea lions in the waters surrounding Icy Strait Point. Enjoy a traditional salmon bake in Juneau. Then cruise the Inside Passage to arrive in Vancouver.

## 12 DAYS. 6 PORTS. 1 AMAZING VACATION.

As the namesake of Norwegian's "Jewel Class" cruise ships, you can bet Norwegian Jewel has it all. As well as offering some of the largest suites at sea, there are staterooms to accommodate every style. When it comes to entertainment, this ship's filled with excitement: a large variety of world-class dining options, vibrant bars, nightclubs, and that's just the beginning. Come aboard and venture into the wild on an Alaska cruise.

### DAY 1: THURSDAY, JULY 11



### ANCHORAGE, AK

Today we will transfer to the airport for our flight to **Anchorage**, the largest city in Alaska. The city combines wild Alaska beauty, convenient urban comforts, mesmerizing outdoor spaces, and captivating arts and culture. Upon our arrival, we will make our way to the beautiful **Anchorage Hilton Hotel** (or similar). With the remainder of the day at your leisure, enjoy the beautiful views from your room of the neighboring Cook Inlet, the

Chugach Mountains, or the Anchorage cityscape.

### DAY 2: FRIDAY, JULY 12

(B,D)

### TALKEETNA, AK

We will board the renowned **Alaska Railroad** today for an exciting morning as we soak in some of the Last Frontier's most spectacular scenery along the rails from Anchorage to Talkeetna. Founded in 1914, the railroad has a mainline over 656 miles long! Onboard hosts will captivate us with their narration and point out the many landmarks visible through the dome railcar's large picture windows. A delicious breakfast will be enjoyed along the way. Upon our arrival in **Talkeetna**, free time will be available to browse the unique shops and enjoy the tasty lunch options. We'll then embark on an exciting **river journey that will take us deep into the Alaskan wilderness** as our guide shares stories about the wildlife, trappers, and Dena'ina Indians. The beautiful **Talkeetna Alaskan Lodge** (or similar) awaits us back in Talkeetna. After settling into our rooms, the group will gather for a delicious dinner at the hotel.



## Departs:

Colby • Cadott • Eau Claire

**Each U.S. citizen must have a passport valid through Oct. 22, 2024**

## Includes:

- Round-trip airfare & motorcoach
- 4 nights' hotel on land w/ 1 bag porter service
- 7-night cruise in stateroom category of choice
- 8 meals on land and all meals on board
- Taxes and gratuities for included services on land and cruise
- Professional tour manager
- Premium Beverage Package with gratuities (Includes drinks up to \$15 each)
- Ultimate Dining Package with gratuities (2 nights' dining in specialty restaurants)
- 250-Minute Internet Package (Per stateroom; excludes Inside)
- \$50 Shore Excursion Credit (Per stateroom, per port; excludes Inside)

## Not included in the price of this tour:

Meals other than those listed on the itinerary, beverages other than tea/coffee/water with included meals on land, onboard drinks over \$15 each, items of a personal nature/souvenirs, personal services on board such as spa or hair-styling, shore excursions, excursion driver/guide gratuities, phone calls and faxes from hotels/ship, travel protection plan, passport fees, visa fees (if applicable), fees related to any COVID-19 requirements for this destination, current baggage fees at the airport as assessed by the airline, and any service not listed in the above inclusions.

## DAY 3: SATURDAY, JULY 13



the stunning waterway called the Turnagain Arm. Watch for Dall sheep and beluga whales and enjoy the spectacular scenery as we journey south to the small mountain town of **Girdwood** to settle into our rooms at **Alyeska Resort** (or similar), the chateau-style hotel that is Alaska's premier resort destination. The afternoon is at your leisure. Tonight we will ride the **aerial tram to the top of Mt. Alyeska** to take in the panoramic views of mountains, hanging glaciers, streams, and forests. A lovely dinner will be enjoyed as a group at the lodge.

## DAY 4: SUNDAY, JULY 14

After breakfast at the resort this morning, we will make our way to the **Alaska Wildlife Conservation Center** to view wildlife up close. This non-profit sanctuary takes in injured and orphaned animals year-round and maintains over 200 acres of large, spacious habitats for the animals to feel at home and display their natural behavior. We may see brown bears cooling off in the water, a bull moose strutting, wood bison roaming the pastures, and much more! Up next is a river-rafting experience. Our **Kenai River scenic float trip** offers a wonderful introduction to the river, taking us along a scenic stretch in search of the wildlife that frequent the river and riverbanks including moose, eagles, Dall sheep, salmon, waterfowl, beaver, and bears. Our guide will navigate us through the Chugach National Forest and the Kenai National Wildlife Refuge and share stories about the Native inhabitants, the gold miners, the early settlers, and the forces of nature that shaped the Kenai River Valley. Then we are in for a real treat – a **delicious, Alaska-style, fresh-caught salmon lunch!** Our day will come to an end at the **Kenai Riverside Lodge** (or similar) in **Cooper Landing** with the remainder of the day at leisure.

## DAY 5: MONDAY, JULY 15



hand introduction to the Iditarod race; and hear stories of the challenges and successes of these mushers. There will be a chance to meet some of the new pups, and you may even get to hold one of them! Next we will board a deluxe marine vessel and **cruise deep into Kenai Fjords National Park**. Our guide will narrate the journey, pointing out the spectacular sights and sharing information on the area's history, its geology, and the wildlife that thrives in the icy waters and lush forests. We'll gaze in awe at towering glaciers and keep our eyes peeled for orca whales, humpback whales, Steller sea lions, harbor seals, puffins, eagles, and many species of seabirds. Lunch is included on board. Later we'll transfer to the pier to **board the beautiful Norwegian Jewel** and explore our home for the next seven nights.

(B,D)

## GIRDWOOD, AK

Our touring today will take us back south to Anchorage for a visit to the **Alaska Native Heritage Center** to explore Alaska's eleven major Native cultures and their traditions. The center features permanent collections as well as traditional Native dwellings that circle Lake Tiulana. We'll then set off on the **Seward Highway**, a National Scenic Byway widely hailed as one of the most scenic drives in Alaska. The first forty miles of the trip parallel

(B,L)

## COOPER LANDING, AK



(B,L,D)

## SEWARD, AK

Following breakfast we will make our way to the **Seavey "Iditaride" Complex**. Over the course of sixty years and four generations, the Seavey family has become known as the preeminent mushing family, winning eight Iditarod races. The family's motto, "take care of your dogs and they will take care of you," has certainly proven to be true. During our time at the kennel, we will visit their homestead; take a **two-mile, wheeled dog sled ride**; get a first-



**DAY 6: TUESDAY, JULY 16**

(B,L,D)

**HUBBARD GLACIER**

Get up close and personal with the gigantic **Hubbard Glacier**, North America's largest tidewater glacier. It is 1,350 square miles of blue ice and one of the most active glaciers in Alaska! Calving occurs nearly every day, an exciting experience that sends large chunks of ice crashing into the water below.

**DAY 7: WEDNESDAY, JULY 17**

(B,L,D)

**ICY STRAIT POINT, AK**

Venture "where the north wind doesn't blow." Known for this famous saying, **Icy Strait Point** is the ideal landing spot for adventurers seeking a new experience. Breathtaking and exciting, Icy Strait Point truly takes you where the wild things are. It's one of the few places in the world where wildlife outnumbers the human population. A trip here certainly satisfies your taste for adventure. While in port, optional excursions include experiencing a traditional Tlingit tribal performance and getting up close to humpback whales and brown bears in the wild. Work up a wilderness hunger and satisfy it with fresh Dungeness crab or take in Alaska's awe-inspiring landscapes by gondola, tram, ATV, kayak, or high-speed boat. Visit <https://www.ncl.com/shore-excursions> to see available shore excursions. You will need to log in or create an account in order to purchase any shore excursions.

**DAY 8: THURSDAY, JULY 18**

(B,L,D)

**JUNEAU, AK**

We are off to **Juneau**, which has been called "Alaska's peak experience," certainly due in part to its unparalleled glacier viewing from such places as Tracy Arm Fjord, the Juneau Icefields, and Glacier Bay National Park. Optional excursions in Juneau include kayaking up one of the area's many protected waterways, embarking on a whale-watching adventure, feasting on salmon, touring historic downtown, or trying one's hand at panning for gold. The majestic Mendenhall Glacier lies nearly twelve miles outside Juneau and can be experienced from both land and sea.

**DAY 9: FRIDAY, JULY 19**

(B,L,D)

**SKAGWAY, AK**

In a single year from 1896 to 1897, the remote town of **Skagway** along the Inside Passage grew from a few tents to a city of 20,000 gold seekers. Today, travelers come in search of other riches – to experience yesteryear along Skagway's charming boardwalk lined with buildings that replicate those Gold Rush days. Excursion options include a scenic ride on a vintage train to the summit of White Pass, a dog sledding adventure with the chance to cuddle husky puppies, or panning for gold like the prospectors in the Klondike Gold Rush. The scenery around Skagway is absolutely gorgeous, and there are so many ways to get out and soak it all in! For the more adventurous, hiking, glacier flightseeing, wilderness safaris, rafting, horseback riding, and ziplining are all great options to consider.

**DAY 10: SATURDAY, JULY 20**

(B,L,D)

**KETCHIKAN, AK**

Its Tlingit Indian name, Kach Khanna, means "spread wings of the eagle." Chances are you'll see one of these magnificent birds perched atop a Sitka tree. Thanks to its abundant rainfall, **Ketchikan** is surrounded by some of the world's most lush wilderness. An introduction to the rich culture of Southeast Alaska's Native Americans and a glimpse at their awe-inspiring totem poles is an experience worth considering. Other optional excursions include flightseeing, crab feasts, a lumberjack show, and salmon or halibut fishing. Plus, there's an opportunity to watch the fishing action aboard the *Aleutian Ballad* from *The Deadliest Catch*!

**DAY 11: SUNDAY, JULY 21**

(B,L,D)

**INSIDE PASSAGE**

Get ready for amazing views and wildlife like nowhere else as we sail through the islands of **Alaska's Inside Passage**.

**DAY 12: MONDAY, JULY 22**

(B)

**HOME**

Following breakfast we will disembark in Vancouver, BC, and transfer to the airport for our flight home.

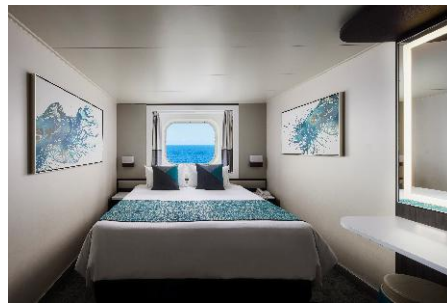




### Inside (IA)

Inside staterooms are the most affordable way to cruise. They include two lower beds that convert into a queen-size bed.

**Total Approx. Size:** 138-278 sq ft



### Oceanview with Picture Window (OA)

Expansive views make Oceanview staterooms the ideal place to unwind at sea. Kick back, relax, and enjoy an amazing view from the big picture window. Two lower beds convert into a queen-size bed.

**Total Approx. Size:** 138-161 sq ft



### Balcony (BA)

Balcony staterooms come with two lower beds that convert into a queen-size bed. Also includes a sitting area and floor-to-ceiling glass doors that open to a private balcony. Your private balcony lets you greet the day, enjoy fresh sea breezes, and soak in breathtaking sunsets!

**Total Approx. Size:** 200-289 sq ft  
**Balcony Size:** 38-54 sq ft

---

**Activity Level:** To participate you must be able to walk/stand for 3-4 hours at an easy pace in all weather conditions and regularly maneuver stairs, inclines, and uneven surfaces without assistance.

---

### CANCELLATION POLICY:

All cancellations after down payment is received will be subject to a \$200 per person cancellation fee. Any remaining payments made are fully refundable if cancellation is received prior to **March 1, 2024**. A 100% fee is charged if the cancellation occurs between **March 1, 2024**, and departure.

**On The Go Bus recommends all travelers purchase an optional travel protection plan from the provider of their choice.** For your convenience, Star Destinations offers a travel protection plan provided by Travel Insurance Services. Travel insurance may be purchased any time before or with final payment to On The Go Bus. If the reason for cancellation is due to a medical or other reason that is covered by Travel Protection, you may be eligible for reimbursement from your Travel Protection Plan provider.

**Please refer to all general OTGB "Policies and Whatnot" at OnTheGoBus.com**

To view state specific fraud warnings, visit: <https://www.travelexinsurance.com/company/fraud-warning>. Travel Insurance Services Inc. ("Travel Insurance") maintains an updated list of alerts and financial defaults on its website available at <https://www.travelexinsurance.com/customer-service/travel-alerts/travelsupplier>.

Visit <https://travelexinsurance.com/docs/ny-phn-covid-19-comp> to view a special notice for NY residents regarding coverage related to COVID-19. Travel Insurance Services, Inc. CA Agency License #0D10209. Travel Insurance is underwritten by Berkshire Hathaway Specialty Insurance Company; NAIC #22276. 716

---

Tour arranged and produced in partnership with Star Destinations.

### TERMS & CONDITIONS

For full tour terms and conditions, please visit [www.stardestinations.com/terms-on-the-go-bus-alaska](http://www.stardestinations.com/terms-on-the-go-bus-alaska)



# NORWEGIAN JEWEL®



Refurbished: 2022 • Built: 2005 • Gross Tonnage: 93,502 • Guests (Double Occupancy): 2,376 • Overall Length: 965 feet • Max Beam: 125 feet • Crew: 1,069

## SHIP HIGHLIGHTS



### The Haven By Norwegian®

The Haven is an exclusive enclave accessible by private keycard with our most luxurious and well-appointed accommodations.



### Mandara Spa®

Revive, refresh and recharge in a spa that is remarkable. Start with a hot-stone massage, one of over 50 specialty treatments offered by our well-trained massage therapists.



### Bliss Ultra Lounge

Cruise into the clubbing scene at Bliss. Dance to a different beat and feel the excitement as you walk through the lit tunnel to the illuminated bar. It's electric.

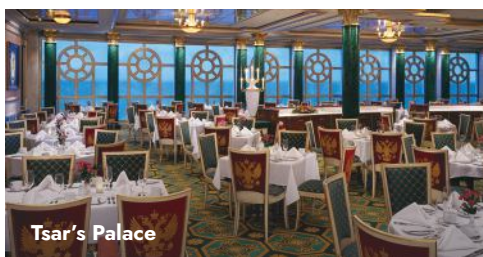
## COMPLIMENTARY DINING

### Azura

Experience a different culinary adventure with every visit to this Main Dining Room, offering a wide variety of cuisine, a menu that changes daily, Chef's Signature Dishes and carefully selected wine recommendations. Seating capacity 231

### Tsar's Palace

Balancing classic favorites with unique new dishes, dining at this Main Dining Room is a must. Offering guests an extensive menu of deliciously fresh flavors. Seating capacity 458



Tsar's Palace

### O'Sheehan's Neighborhood Bar & Grill

Casual dining to suit every taste, from salads to burgers to daily dinner specials like prime rib — open 24/7. Seating capacity 196

### Garden Café

Whatever you're craving, chances are you'll find it at the Garden Café. This complimentary, indoor buffet-style restaurant serves up breakfast, lunch and dinner — and the floor-to-ceiling windows provide picturesque ocean views. Seating capacity 406

### The Great Outdoors

This spacious outdoor buffet offers outstanding ocean views and has all your favorites, from burgers and fries to chicken, all made to order. Seating capacity 206

### Topsiders Bar & Grill

Enjoy your favorites at Topsiders where made-to-order favorites are grilled just the way you like. Seating capacity 216

### Chin Chin

Enjoy an Asian fusion menu featuring freshly prepared noodles, delicious wok-fried dishes, authentic soups and more. Seating capacity 80



Chin Chin

## SPECIALTY DINING & TREATS

### Cagney's Steakhouse

An authentic American steakhouse where choice cuts of Angus Beef® are perfectly prepared. Seating capacity 106

### La Cucina

Buona sera! Enjoy the freshest ingredients and dine on classics from Italy like osso buco or seafood fettuccine. Seating capacity 92

### Teppanyaki

Sit at a lively shared table as a skillful chef perfectly prepares Japanese hibachi shrimp, steak, chicken and fried rice on a large steel grill. Seating capacity 32

### Moderno Churrascaria

A Brazilian steakhouse boasting an impressive salad bar, cured meats and cheeses. Be sure to save room for skewers of slow-roasted meats carved tableside by our pasadores. Seating capacity 76

### Le Bistro

French cuisine at its finest. Surround yourself in classic décor and plates of rich cuisine such as escargot, bouillabaisse and coq au vin. Seating capacity 106

### Sushi

If you're in the mood for sushi, pull up a stool at this contemporary sushi, sashimi and yakitori bar for traditional Japanese bites. Seating capacity 10

### Atrium Café & Bar with The Bake Shop Treats

A morning and late-night favorite place to relax, enjoy your coffee with a treat from The Bake Shop, grab a beer, sip a glass of wine or your favorite drink amid the hustle and bustle of the Atrium.

## ENTERTAINMENT / BARS & LOUNGES

### Rock You Tonight

Take a walk on the wild side in tonight's production of Rock You Tonight! The high-energy grooves of our Jewel Production Cast combines with the rocking sounds of the Norwegian Jewel Showband to bring you an athletic explosion of dance that leaps off the stage to rock icons Queen, Journey, and The Who.

### Velvet

Ready to "Turn the Beat Around"? Then slip behind the red velvet rope to relive the music and glamour of the sexy disco era. Showcasing a stellar array of circus acrobatics, Velvet will have you off your seat with excitement singing along with fabulous disco divas, and boogying to groovy hits like "Enough is Enough" and "Last Dance."

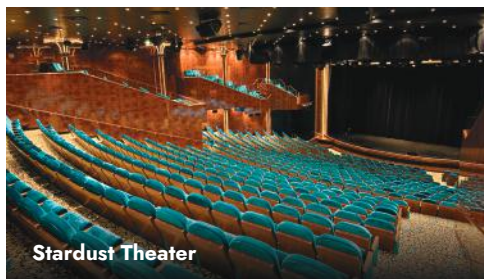
### Deal or No Deal

Just like the popular television game show, *Deal or No Deal*, contestants along with the audience try to beat the banker for exciting prizes.

### Stardust Theater

You're invited for an evening of laughter and entertainment in the Stardust Theater. Seating capacity 996

*Seating capacities subject to change.*



Stardust Theater

### Atrium Cafe & Bar

You'll love the people-watching at this great casual hangout located in the beautiful Atrium. Seating capacity 59

### O'Sheehan's Neighborhood Bar & Grill

Try a few of the many beers on tap, catch a game on the two-story TV screen or play some billiards or darts. Seating capacity 196.



O'Sheehan's Neighborhood Bar & Grill

### Bliss Ultra Lounge

Cruise into the clubbing scene at Bliss. Dance to a different beat and feel the excitement as you walk through the lit tunnel to the illuminated bar. It's electric. Seating capacity 85

### Magnum's Champagne & Wine Bar

Sip your favorite champagne and wine in this upscale lounge. Seating capacity 68

### Sugarcane Mojito Bar

Savor a delicious handcrafted mojito freshly muddled just the way you like. Seating capacity 16

### Shaker's Martini & Cocktail Bar

Happy hour comes shaken or stirred at this classic martini bar with a twist. Join the martini crowd for a cosmopolitan ambience. Seating capacity 45

### Topsiders Bar & Grill

A full-service bar located at the Oasis Pool, perfect for working on your tan while sipping your favorite drink. Seating capacity 216

### Malting's Beer & Whiskey Bar

With a unique variety of international spirits and an impressive list of imported and domestic beers, you can sip your way around the world. Seating capacity 42

### The Great Outdoors Bar

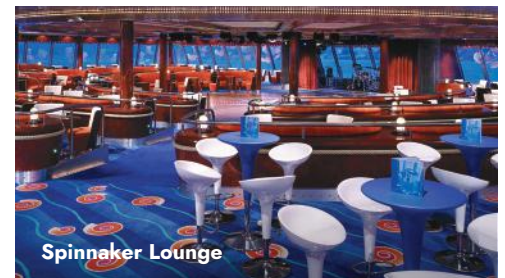
Sip on a refreshing beer at this bustling open-air buffet.



The Great Outdoors Bar

### Spinnaker Lounge

Meet up with friends for cocktails or step onto the dance floor at this popular bar and lounge. Seating capacity 291



Spinnaker Lounge

### Sake Bar

Enjoy this full-service bar offering premium sake and imported beer.

## ACTIVITIES FOR KIDS

### Splash Academy

Kids will have a blast at our complimentary youth program, where they can enjoy creative play, themed activities, sports and more. Supervised Group Sitting\* is available on port days or in the evening.

*\*Nominal fee applies.*

### Video Arcade

Stop by and capture a few aliens, win a car race, play pinball and fly a jet fighter. Let your imagination run wild at the Video Arcade.

### Kids' Pool

They'll splash. They'll splash. Kids will have the best of times at the Kids' Pool.



# ALASKA LAND & CRUISE - REGISTRATION FORM



For further information or questions, please contact:

Tour arranged by Star Destinations

**On The Go Bus**  
(715) 619-6064 or [janet@onthegobus.com](mailto:janet@onthegobus.com)  
[www.OnTheGoBus.com](http://www.OnTheGoBus.com)

**July 11-22, 2024** (One form required for **each** traveler)

## PASSENGER INFORMATION (Please PRINT)

(Name **MUST** be written **EXACTLY** as it appears on your passport)

First Name: \_\_\_\_\_

Middle Name(s): \_\_\_\_\_

Last Name(s): \_\_\_\_\_

Preferred Name: \_\_\_\_\_ Gender (circle one): M F

Address: \_\_\_\_\_

City: \_\_\_\_\_ State: \_\_\_\_\_ Zip: \_\_\_\_\_

Preferred Phone: \_\_\_\_\_

Email: \_\_\_\_\_

Passport #: \_\_\_\_\_

Passport Expiration Date: \_\_\_\_ / \_\_\_\_ / \_\_\_\_  
month / day / year

Date of Birth: \_\_\_\_ / \_\_\_\_ / \_\_\_\_  
month / day / year

Dietary Needs: \_\_\_\_\_

Additional Special Requests/Needs: \_\_\_\_\_

Emergency Contact: \_\_\_\_\_

Relationship: \_\_\_\_\_

Emergency Contact's Phone: \_\_\_\_\_

Is there a special occasion you would like to recognize on tour? \_\_\_\_\_

Do you need wheelchair assistance at the airport? \_\_\_\_\_

Sleeping Preference (circle one): Two Beds One Bed

Roommate name (if applicable): \_\_\_\_\_

Frequent Flyer #s (if applicable): \_\_\_\_\_

KTN # (if applicable): \_\_\_\_\_

Global Entry # (if applicable): \_\_\_\_\_

## PAYMENT INFORMATION

**A minimum \$500 deposit per person is required with your registration form. (\$200 is non-refundable)**

**FINAL PAYMENT IS DUE: MARCH 1, 2024**

### Booking is easy!

Call 715-619-6064 to reserve seat(s). Payment requested within 7 days of booking.

Make check payable to: **On The Go Bus**  
Mail to: **PO Box 2, Elmwood, WI 54740**

**If applicable:** For all international travel, please include a copy of your passport with your registration/payment.

Please choose a stateroom:	Trip cost per person	
	Double	Single
<b>Inside (IA)</b> (138-278 sq ft)*	<input type="checkbox"/> \$6,830	<input type="checkbox"/> \$8,375
<b>Oceanview (OA)</b> (138-161 sq ft)*	<input type="checkbox"/> \$7,150	<input type="checkbox"/> \$9,020
<b>Balcony (BA)</b> (200-289 sq ft)*	<input type="checkbox"/> \$7,710	<input type="checkbox"/> \$10,140

\*Reserve early. All cruise ship staterooms subject to availability at time of registration.

## TRAVEL PROTECTION PLAN

TOTAL TOUR COST	TRAVEL PROTECTION PLAN COST (per person)
\$6,001-\$7,000	\$644
\$7,001-\$8,000	\$736
\$8,001-\$9,000	\$826
\$9,001-\$10,000	\$916
\$10,001-\$11,000	\$1,038

**On The Go Bus RECOMMENDS all travelers purchase a Travel Protection Plan. For your convenience, Star Destinations offers a Travel Protection Plan provided by Travellex Insurance Services.**

- ☐ **Yes, I would like to purchase the offered plan.**  
(see pricing above)  
(Payment may be sent with your deposit or with final payment to On The Go Bus)
- ☐ **No, I decline the offered plan.**

To view state specific fraud warnings, visit: <https://www.travellexinsurance.com/company/fraud-warning>. Travellex Insurance Services Inc. ("Travellex Insurance") maintains an updated list of alerts and financial defaults on its website available at <https://www.travellexinsurance.com/customer-service/travel-alerts/travel-supplier>.

Visit <https://travellexinsurance.com/docs/ny-phn-covid-19-comp> to view a special notice for NY residents regarding coverage related to COVID-19. Travellex Insurance Services, Inc. CA Agency License #0D10209. Travel Insurance is underwritten by Berkshire Hathaway Specialty Insurance Company; NAIC #22276. 716

**\* Travel Protection Plan may be purchased any time before or with final payment to On The Go Bus \***

PLEASE TURN OVER FOR SIGNATURE

# ALASKA LAND & CRUISE - REGISTRATION FORM

**DOCUMENTATION:** Each U.S. citizen must have a valid passport through **October 22, 2024, to participate**. If you don't have a passport, call our office and we'll tell you how to apply for one. Holders of non-U.S. passports have different entry requirements. Please NOTE: Due to airline security measures, your passport name must match your airline ticket name and your tour reservation name or you may be denied aircraft boarding.

**OPTIONAL TRAVEL PROTECTION PLAN:** On The Go Bus recommends that you purchase a Travel Protection Plan to help protect you and your travel investment against the unexpected so you can relax and enjoy your trip. Participants may purchase this coverage from the provider of your choice. For your convenience, Star Destinations offers a Travel Protection Plan, 360° Group Premier provided by Travelex Insurance Services, that helps provide coverage for trip cancellation/interruption, trip delay, baggage loss, theft or damage, medical expense and emergency evacuation coverage, and more. For more information, please see the product flyer included with this brochure. If you would like to purchase the offered plan, please check the applicable box on the registration form. Please Note: The plan cannot be purchased after final payment. To view/download the Policy, which provides the full coverage terms and details, including limitations and exclusions, go to: <https://policy.travelexinsurance.com/GPB-0521>. To view state specific fraud warnings, visit: <https://www.travelexinsurance.com/company/fraud-warning>. The purchase of this product is not required in order to purchase any other travel product or service. Your travel retailer might not be licensed to sell travel insurance and will only be able to provide general information about the product. An unlicensed travel retailer may not answer questions about the terms and conditions of the insurance offered and may not evaluate the adequacy of your existing insurance coverage. The products being offered provide insurance coverage that only applies during your covered trip. You may have insurance coverage from other sources that provide similar benefits but may be subject to different restrictions depending upon the coverage. You may wish to compare the terms of the travel policy offered through Travelex with any existing life, health, home, and automobile insurance policies you may have. If you have questions about your coverage under your existing insurance policies, contact your insurer or insurance agent or broker. Travelex Insurance Services, Inc. CA Agency License #0D10209. Travel Insurance is offered on behalf of and under the direction of Travelex Insurance Services. Travel Insurance is underwritten by Berkshire Hathaway Specialty Insurance Company; NAIC #22276. 7D4

**CANCELLATION:** All cancellations after down payment is received will be subject to a \$200 per person cancellation fee. Any remaining payments made are fully refundable if cancellation is received prior to February 1, 2024. A 100% fee is charged if the cancellation occurs between February 1, 2024, and departure. If the reason for cancellation is due to a medical or other reason that is covered by Travel Protection, you may be eligible for reimbursement from your Travel Protection Plan provider.

**TRAVELERS WITH SPECIAL NEEDS:** You must advise Star Destinations, Inc. (SDI) at the time of registration of any disability requiring special attention. SDI will make reasonable efforts to accommodate the special needs of travelers. The Americans with Disabilities Act is applicable only in the U.S., and accommodations outside the U.S. may be more limited. Travelers requiring assistance are required to be accompanied by a companion who is capable of, and totally responsible for, providing the assistance. Neither SDI personnel nor its suppliers may lift or physically assist with travelers' special needs including, but not limited to, walking, dining, or other routine activities. Travelers thinking they may need assistance should call SDI to determine what accommodations may reasonably be provided. Arrangements at an additional cost are the financial responsibility of the traveler.

**TERMS & CONDITIONS:** Star Destinations, Inc. (SDI) acts as an agent for suppliers such as airlines, hotels or activities to provide you with the travel services and accommodations. Although great care is taken in choosing suppliers, we are unable to control them and therefore cannot be held responsible or liable for their acts or omissions. Should a contracted supplier be unable to perform required services, SDI reserves the right to substitute advertised services with similar services. SDI is not responsible for any claims, losses, damages, costs or expenses arising out of injury, accident or death, damage, loss, trip delay or delay of baggage, or other inconvenience resulting from mechanical breakdowns, fire, theft, civil disturbances, government actions, weather, and other factors beyond our control. In the case of a pandemic or worldwide disturbance that interrupts or cancels your planned tour, SDI will do everything possible to retrieve any refundable components of your tour but cannot be held responsible for any non-refundable portions of the tour. In addition, SDI reserves the right to vary the tour price advertised or printed to cover any increase in air fare, volatile fuel prices, government taxes and charges, exchange rate fluctuations, or other tour-related tariffs or newly announced travel costs. In the current travel environment, pricing may be increased due to unexpected requirements for health and safety of tour members. Due to infectious diseases, including COVID-19, destination areas may implement restrictions and requirements that may add additional costs beyond our control. Be aware that any public interaction carries a risk of exposure to infectious diseases. Travelers assume personal risk upon tour registration, and SDI cannot be held responsible in the event of infectious disease exposure. If you request a variation or change to your booking, SDI may choose to accept or reject that request. If accepted, you are responsible for any fees associated with it. If the minimum number of passengers required to operate the tour is not met, SDI reserves the right to cancel the tour.

It is the sole discretion of SDI to refuse transport to any passenger, or require any passenger to leave the tour, if it is reasonably believed that the passenger (1) is dangerous to others or to himself or herself; (2) is engaged in, or is threatening to engage in behavior that may adversely affect the safety, security, enjoyment, or well-being of other passengers, including behavior that is disruptive, verbally or physically abusive, obnoxious, harassing, or obscene; or (3) has failed or refused to follow SDI's rules and procedures or the instructions of its representatives. In the event a passenger is removed, such passenger may be left at any location without any liability to SDI or its representatives. SDI shall not be required to refund any portion of the price paid by any passenger who is removed, nor shall SDI be responsible for any further expenses incurred by the passenger. SDI shall be entitled to recover from the passenger any costs or expenses incurred by SDI or its representatives in the removal of the passenger or the exercise or enforcement of this clause.

By registering for this tour and signing below, **you acknowledge that On The Go Bus reserves the right to refuse transport at any time to any passenger who does not meet the activity level requirements listed.** Neither On The Go Bus nor Star Destinations will be required to refund any portion of the price paid by any passenger who is removed in enforcement of this clause.

## Activity Level: Moderate

In order to participate in this tour, **you must:**

- Be able to walk/stand 3-4 hours at a time at a moderate pace in all weather conditions
- Be able to regularly maneuver stairs, inclines, and uneven surfaces without assistance

Signature: \_\_\_\_\_

Date: \_\_\_\_\_

Please initial to indicate you have read/agree to the terms and conditions: \_\_\_\_\_

Have you cruised with NCL in the past? ☐ YES ☐ NO

If yes, please include your Latitudes Rewards number (if known): \_\_\_\_\_





#### PLAN BENEFITS & BONUS COVERAGES

Benefits	Coverage <sup>1</sup>
Trip Cancellation	100% of trip cost (\$20,000 limit)
Trip Interruption	150% of trip cost (\$30,000 limit)
Trip Delay <sup>8</sup>	\$1,000 (\$250/day)
Sporting Equipment Delay	\$200
Missed Connection	\$1,000
Baggage & Personal Effects	\$1,500
Baggage Delay	\$250
Emergency Medical & Dental Expenses	\$50,000 (\$500 dental sublimit)
Emergency Evacuation & Repatriation	\$250,000
Accidental Death & Dismemberment <sup>5</sup>	\$10,000
Travel Assistance & Concierge Services <sup>7</sup>	Included

#### BONUS COVERAGES

If plan is purchased at or before final trip payment.

• Pre-existing Medical Condition Exclusion Waiver	Included
• Financial Default Coverage	Included

## 360° GROUP PREMIER

### TRAVEL PROTECTION

The 360° Group Premier plan provides maximum travel protection for all ages at competitive group rates. Enjoy benefits like trip cancellation & interruption, emergency medical and 24/7 travel assistance & concierge services.

#### PLAN HIGHLIGHTS

- Primary coverage, no deductibles
- Pre-existing medical condition exclusion waiver<sup>3</sup>
- Trip cancellation/interruption benefit includes:
  - Sickness, injury or death<sup>4</sup>
  - Inclement weather
  - Financial default<sup>3</sup> & labor strikes
  - Business reasons
  - Terrorist incident
- 3 hour missed connection benefit
- 5 hour trip delay benefit
- 12 hour baggage delay benefit
- Fast online claims<sup>6</sup>

#### PLAN RATES

Trip Cost	Age 25+
\$0 <sup>2</sup>	\$43
\$1 - \$500	\$80
\$501 - \$1,000	\$116
\$1,001 - \$1,500	\$160
\$1,501 - \$2,000	\$207
\$2,001 - \$3,000	\$280
\$3,001 - \$4,000	\$370
\$4,001 - \$5,000	\$464
\$5,001 - \$6,000	\$552
\$6,001 - \$7,000	\$644
\$7,001 - \$8,000	\$736
\$8,001 - \$9,000	\$826
\$9,001 - \$10,000	\$916
\$10,001 - \$11,000	\$1,038
\$11,001 - \$12,000	\$1,135
\$12,001 - \$13,000	\$1,232
\$13,001 - \$14,000	\$1,329
\$14,001 - \$15,000	\$1,426
\$15,001 - \$16,000	\$1,524
\$16,001 - \$17,000	\$1,623
\$17,001 - \$18,000	\$1,721
\$18,001 - \$19,000	\$1,819
\$19,001 - \$20,000	\$1,918

Rates are per traveler and subject to change. Contact the agency for rates under 25 years of age.

<sup>1</sup> All coverages per insured up to limits listed. Coverage, rates and maximum trip length may vary by state. Please see your policy for details or call 888.574.7026. <sup>2</sup> Includes \$1,000 in Trip Interruption - Return Air only. Coverage for Trip Interruption and Trip Interruption - Return Air Only cannot be combined. <sup>3</sup> Coverage when plan is purchased at or before final trip payment. <sup>4</sup> Of you, a Traveling Companion, Family Member or Business Partner. <sup>5</sup> Not available for NH residents. <sup>6</sup> Based on industry average. Fastest payment on approved claims is based on 'electronic payment' of claim. <sup>7</sup> Provided by the designated provider as listed in the Policy. <sup>8</sup> \$200/day for IL residents 09.21

## TRAVEL ASSISTANCE SERVICES<sup>7</sup>

Includes a wide range of services before and during trips through a 24/7 toll free number.

### MEDICAL SERVICES INCLUDE:

- Medical Assistance
- Medical Consultation & Monitoring
- Medical Evacuation
- Emergency Medical Payments
- Prescription Assistance
- Dependent Transportation & Family Visits
- Repatriation of Remains

### ASSISTANCE SERVICES INCLUDE:

- 24 Hour Legal Assistance
- Message Services
- Language Interpretation Services
- Emergency Cash Transfer
- Pre-Trip Travel Services
- Travel Document & Ticket Replacement
- Concierge Services
- Business Services

### PRE-EXISTING CONDITION EXCLUSION WAIVER

Pre-existing medical conditions are eligible for coverage when:

- Plan is purchased at or before final trip payment
- Full trip cost is insured
- The traveler is medically able to travel at the time of plan purchase

A pre-existing condition is an Injury, Sickness or other condition (excluding any condition from which death ensues) of an Insured, Traveling Companion, Business Partner or Family Member within the 60 day period immediately preceding and including the Insured's coverage effective date.

This exclusion also applies to those not traveling.

This plan does not cover any loss caused by or resulting from: intentionally self-inflicted Injury, suicide, or attempted suicide of the Insured, Family Member, Traveling Companion or Business Partner while sane or insane; Normal Pregnancy or Childbirth, other than Unforeseen Complications of Pregnancy, of the Insured, a Traveling Companion or a Family Member; participation in professional athletic events; motor sport, or motor racing, including training or practice for the same; mountain climbing that requires the use of equipment such as; pick-axes, anchors, bolts, crampons, carabineers, and lead or top-rope anchoring or other specialized equipment; operating or learning to operate any aircraft, as student, pilot, or crew; air travel on any air-supported device, other than a regularly scheduled airline or air charter; war (whether declared or not) or act of war, participation in a civil disorder, riot, insurrection or unrest; any unlawful acts committed by the Insured; Mental, Nervous or Psychological Disorder; if the Insured's tickets do not contain specific travel dates (open tickets); being under the influence of drugs or narcotics, unless administered upon the advice of a Physician or intoxication above the legal limit; any Loss that occurs at a time when this coverage is not in effect; traveling solely or substantially for the purpose of securing medical treatment; any Trip taken outside the advice of a Physician; Pre-Existing Medical Conditions of an Insured, Traveling Companion, Business Partner or Family Member (within a 60 day period immediately preceding coverage effective date). The following exclusions also apply to the Medical Expense Benefit: routine physical examinations; mental health care; replacement of hearing aids, eye glasses, contact lenses, sunglasses; routine dental care; any service provided by the Insured, a Family Member, or Traveling Companion; alcohol or substance abuse or treatment for the same; Experimental or Investigative treatment or procedures; care or treatment which is not Medically Necessary, except for related reconstructive surgery resulting from trauma, infection or disease; coverage for Trips less than 100 miles from the Insured's Primary Residence (also applies to the Emergency Evacuation Benefit). The following exclusions also apply to Accidental Death and Dismemberment: Benefits will not be provided for the following: loss caused by or resulting directly or indirectly from Sickness or disease of any kind; stroke or cerebrovascular accident or event; cardiovascular accident or event; myocardial infarction or heart attack; coronary thrombosis; aneurysm. Please refer to your policy for a complete list of plan exclusions and limitations. The purchase of this product is not required in order to purchase any other travel product or service. Your travel retailer might not be licensed to sell travel insurance and will only be able to provide general information about the product. An unlicensed travel retailer may not answer questions about the terms and conditions of the insurance offered and may not evaluate the adequacy of your existing insurance coverage. The products being offered provide insurance coverage that only applies during your covered trip. You may have insurance coverage from other sources that provide similar benefits but may be subject to different restrictions depending upon the coverage. You may wish to compare the terms of the travel policy offered through Travellex with any existing life, health, home and automobile insurance policies you may have. If you have questions about your coverage under your existing insurance policies, contact your insurer or insurance agent or broker. The product descriptions provided here are only brief summaries and may be changed without notice. The full coverage terms and details, including limitations and exclusions, are contained in the insurance policy. If you have questions about coverage available under our plans, please review the policy or contact Travellex Insurance Services Inc. Toll Free 888.574.7026 Email: [customersolutions@travellexinsurance.com](mailto:customersolutions@travellexinsurance.com). Any inquiry regarding claims may be directed to [travellex.claims@bhspecialty.com](mailto:travellex.claims@bhspecialty.com); 855.205.6054. To view state specific fraud warnings, visit [travellexinsurance.com/company/fraud-warning](http://travellexinsurance.com/company/fraud-warning). Consumers in California may also contact: California Department of Insurance Hotline 800.927.4357 or 213.897.8921. Travellex Insurance Services, Inc. CA Agency License #0D10209. Consumers in Maryland may contact: Maryland Insurance Administration 800.492.6116 or 410.468.2340. Travel Insurance is underwritten by Berkshire Hathaway Specialty Insurance Company; NAIC #22276 under Policy Form series (all states except as otherwise noted) PG-TA-IPL-USE. In KS, MA, MN, MO, MT, OR, VA, and VT Policy Form series PG-TA-IPL-NV. In CA Policy Form # PG-TA-IPL-USEIM and PG-TA-IPL-CAEAH, CO Policy Form # PG-TA-IPL-COEAH and PG-TA-IPL-COEIM, IL Policy Form # PG-TA-IPL-ILE, IN Policy Form # PG-TA-IPL-INEAH and PG-TA-IPL-NVIM, MD Policy Form # PG-TA-IPL-MDE, NH Policy Form # PG-TA-IPL-NHE, NY Policy Form # PG-TA-IPL-NVIM and PG-TA-IPL-NVAH-NY, PA Policy Form # PG-TA-IPL-USEIM and PG-TA-IPL-NVAH-PA, TX Policy Form # PG-TA-IPL-TXEAH and PG-TA-IPL-TXEIM, UT Policy Form # PG-TA-IPL-UTE, WA Policy Form # PG-TA-IPL-NVIM and PG-TA-IPL-WAEAH. SDH 09.21



For plan questions call Travellex at 888.574.7026 or  
Contact your Travel Professional to Enroll:  
Plan # GPB-0521

### VIEW PLAN DETAILS

View your policy: [policy.travellexinsurance.com/GPB-0521](http://policy.travellexinsurance.com/GPB-0521)



**Travellex Insurance Location Number: 15-0153**

**PO Box 456 / 1903 N US Hwy 71 / Carroll, IA 51401**

**Office 800-284-4440 or 712-792-9793**

**[www.stardestinations.com](http://www.stardestinations.com)**



**Dream. Explore.  
Travel On.**