

SYMBOL					CODE					BOTANICAL / COMMON NAME					CONT		QTY		SYMBOL					CODE					BOTANICAL / COMMON NAME					SPACING		QTY	
TREES																	GROUND COVERS																				
		GB	Ginkgo biloba 'Magyar' / Magyar Maidenhair Tree	2" B&B	5			BP	Bio Plugs / Bio Retention Plug Mix	2' O.C.	5,267 sf																										
		HV	Hamamelis virginiana / Common Witch Hazel	1.5" B&B	9			ST	Gertens MN Pollinator Seed Mix	10 pls lbs / acre	9,306 sf																										
		MI	Malus ioensis / Prairie Crabapple	1.5" B&B	3			MA	Matrix Mix 1	-	602 sf																										
		MX	Malus x 'Snowdrift' / Snowdrift Crabapple	1.5" B&B	4			MB	Matrix Mix 2	-	540 sf																										
		QA	Quercus alba / White Oak	2" B&B	3			MC	Matrix Mix 3	-	352 sf																										
		TC	Tilia cordata 'Greenspire' / Greenspire Littleleaf Linden	2" B&B	6			TS	Turf Seed - Bio Swale	-	2,513 sf																										
								TB	Turf Sod Bluegrass / Kentucky Bluegrass	-	39,224 sf																										
								TS2	Turf Sod Shade Master / Shade Tolerant Blend	-	21,408 sf																										
SHRUBS																	SHEET LIST:																				
		AF	Agastache foeniculum / Blue Giant Hyssop	#1 Cont.	22			1.	L-0 COVER SHEET																												
		AT	Asclepias tuberosa / Butterfly Milkweed	#1 Cont.	34			2.	L-1 SEEDING PLAN																												
		BA	Baptisia australis / Blue Wild Indigo	#1 Cont.	24			3.	L-2 TREE PLAN																												
		EP	Echinacea purpurea / Coneflower	#1 Cont.	8			4.	PLAN - MATCH LINE A																												
		HM	Helianthus maximiliani / Maximilian Sunflower	#1 Cont.	57			5.	PLAN - MATCH LINE B																												
		NX	Nepeta x faassenii / Catmint	#1 Cont.	117			6.	ENLARGEMENT PLAN - SENSORY GARDEN																												
		PO	Physocarpus opulifolius 'Dart's Gold' / Dart's Gold Ninebark	#1 Cont.	19			7.	DETAILS																												
		SB	Stachys byzantina / Lamb's Ear	#1 Cont.	76			GENERAL NOTES																													
		SN	Symphotrichum novae-angliae / New England Aster	#1 Cont.	22			1.	LANDSCAPE CONTRACTOR SHALL INSPECT THE SITE AND BECOME FAMILIAR WITH EXISTING CONDITIONS RELATING TO THE NATURE AND SCOPE OF WORK																												
		VL	Viburnum lentago / Nannyberry	#1 Cont.	24			2.	LANDSCAPE CONTRACTOR SHALL VERIFY PLAN LAYOUT AND BRING TO THE ATTENTION OF THE LANDSCAPE ARCHITECT DISCREPANCIES WHICH MAY COMPROMISE THE DESIGN OR INTENT OF THE LAYOUT																												
								3.	LANDSCAPE CONTRACTOR SHALL ASSURE COMPLIANCE WITH APPLICABLE CODES AND REGULATIONS GOVERNING THE WORK AND MATERIALS SUPPLIED																												
								4.	LANDSCAPE CONTRACTOR SHALL PROTECT EXISTING ROADS, CURBS/ GUTTERS. TREES, LAWNS AND SITE ELEMENTS DURING CONSTRUCTION OPERATIONS. DAMAGE TO SAME SHALL BE REPAIRED AT NO COST TO OWNER.																												
								5.	LANDSCAPE CONTRACTOR SHALL VERIFY ALIGNMENT AND LOCATION OF UNDERGROUND AND ABOVE GRADE UTILITIES AND PROVIDE NECESSARY PROTECTION BEFORE CONSTRUCTION BEGINS (MIN. 10' CLEARANCE)																												
								6.	LANDSCAPE CONTRACTOR SHALL COORDINATE THE PHASES OF CONSTRUCTION AND PLANTING INSTALLATION WITH OTHER CONTRACTORS WORKING ON SITE.																												
								7.	LANDSCAPE CONTRACTOR SHALL REVIEW THE SITE FOR DISCREPANCIES IN SITE CONDITIONS WHICH MIGHT NEGATIVELY AFFECT PLANT ESTABLISHMENT, SURVIVAL, OR WARRANTY. UNDESIRABLE SITE CONDITIONS SHALL BE BROUGHT TO THE ATTENTION OF THE LANDSCAPE ARCHITECT PRIOR TO BEGINNING OF WORK.																												
								8.	LANDSCAPE CONTRACTOR IS RESPONSIBLE FOR ONGOING MAINTENANCE OF NEWLY INSTALLED MATERIALS UNTIL TIME OF SUBSTANTIAL COMPLETION.																												
GRASSES																																					
		BB	Bouteloua gracilis 'Blonde Ambition' / Blonde Ambition Blue Grama	#1 Cont.	42																																
		CP	Carex pensylvanica / Pennsylvania Sedge	#1 Cont.	8																																
		HM2	Hakonechloa macra 'Aureola' / Golden Variegated Forest Grass	#1 Cont.	66																																
		PV	Panicum virgatum 'Heavy Metal' / Heavy Metal Switch Grass	#1 Cont.	43																																
		SS	Schizachyrium scoparium 'Blaze' / Blaze Little Bluestem	#1 Cont.	99																																

General Notes

J.B
Initials

1
Revision/Issue

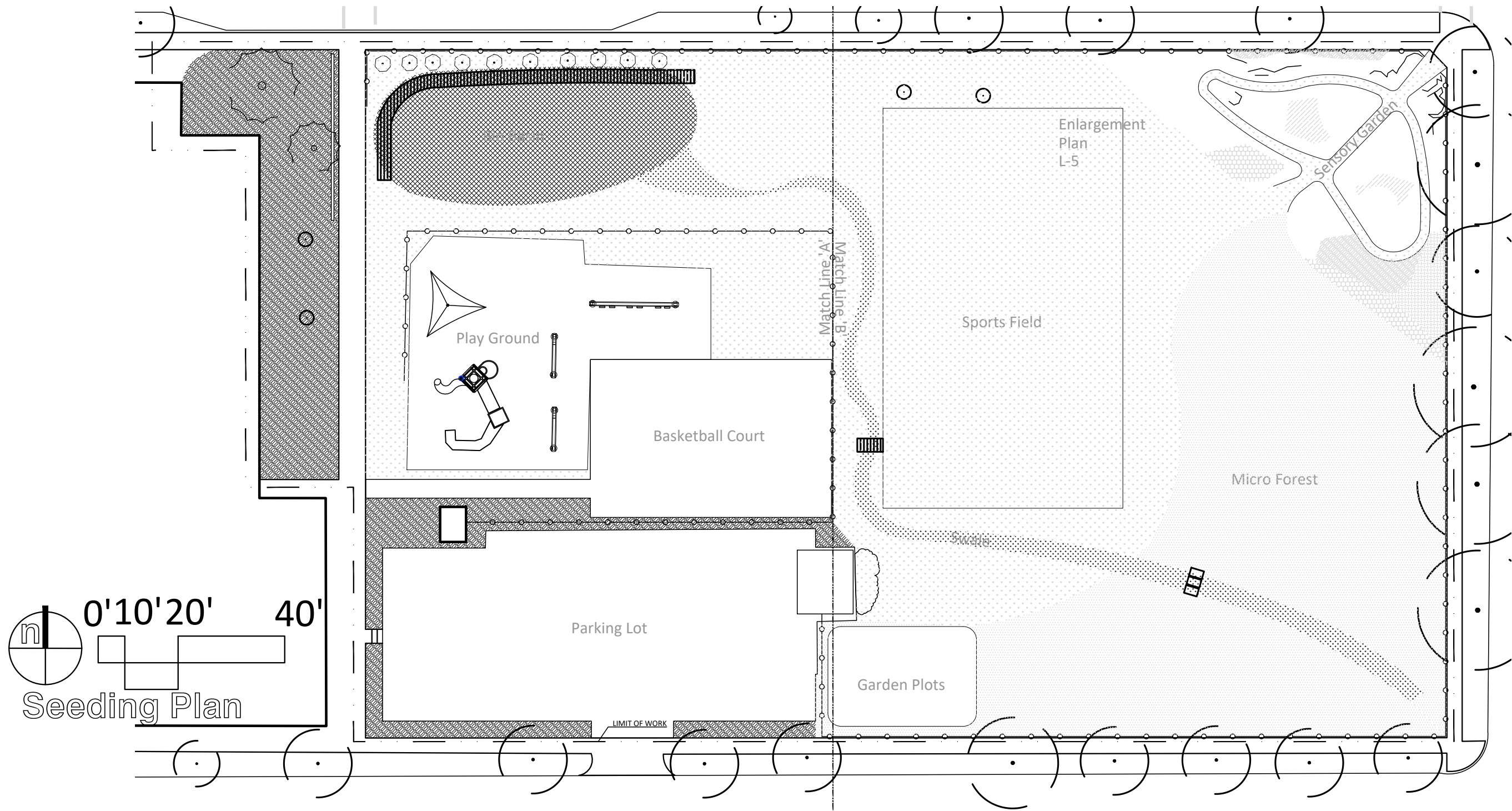
12.11.
Date

Project Name and Address

12.11.24
Date

L-0

Sheet No.



SEEDING NOTES:

1. NATIVE SEED MIX ESTABLISHMENT - YEAR 1
- 1.1. MOW ENTIRE AREA 2-4 TIMES DEPENDING ON DATE OF PLANTING; NO MORE THAN 40-DAY INTERVALS BETWEEN MOWING; CUT ENTIRE AREA USING SYCTHE OR LINE TRIMMER. CUTTING HEIGHT SHOULD BE BETWEEN 5"-8". FOR AREAS WITH AGGRESSIVE WEED GROWTH, HAND PULL WEEDS.
- 1.2. NO FERTILIZERS SHALL BE USED.
2. NATIVE SEED MIX ESTABLISHMENT - YEAR 2
- 2.1. MOW ENTIRE AREA ONCE BETWEEN MID- JUNE AND MID-AUGUST DEPENDING ON HEIGHT AND DENSITY OF WEED COVER. CUT ENTIRE AREA USING SCYTHE OR LINE TRIMMER. CUTTING HEIGHT SHOULD BE BETWEEN 5"-8". FOR AREAS WITH AGGRESSIVE WEED GROWTH, HAND PULL WEEDS.
- 2.2. NO FERTILIZERS SHALL BE USE.
3. SUBSEQUENT YEARS
- 3.1. SPOT TREAT/ HAND PULL WEEDS AS NEED
- 3.2. MOW AREA ONCE PER YEAR IN LATE NOVEMBER OR EARLY MAY. RAKE OUT CUT MATERIAL.

SYMBOL	CODE	BOTANICAL / COMMON NAME	SPACING	QTY
GROUND COVERS				
	BP	Bio Plugs / Bio Retention Plug Mix	2' O.C.	5,267 sf
	ST	Gertens MN Pollinator Seed Mix	10 pls lbs / acre	9,306 sf
	MA	Matrix Mix 1	-	602 sf
	MB	Matrix Mix 2	-	540 sf
	MC	Matrix Mix 3	-	352 sf
	TS	Turf Seed - Bio Swale	-	2,513 sf
	TB	Turf Sod Bluegrass / Kentucky Bluegrass	-	39,224 sf
	TS2	Turf Sod Shade Master / Shade Tolerant Blend	-	21,408 sf

General Notes

J.B	1	12.11
Initials	Revision/Issue	Date

Maxfield
Elementary
School
St. Paul, MN

Project Name and Address

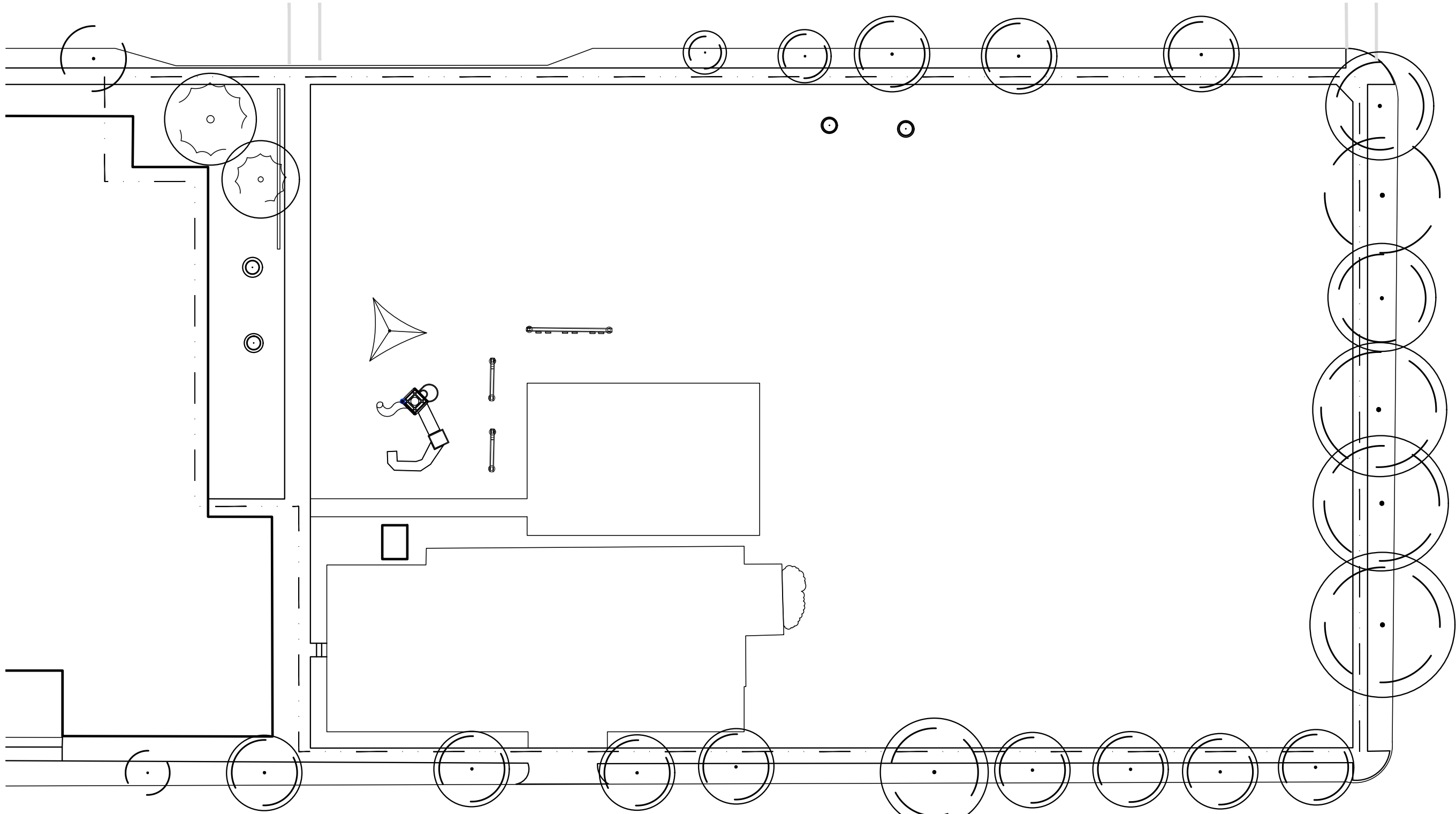
SEEDING
PLAN

L-1

12.11.24
Date

1" = 40'

Scale Sheet No.



- NOTES:
- 1. BEFORE ANY GRADING, DEMOLITION, OR OTHER DISTURBANCES, TREE PROTECTION FENCING MUST BE INSTALLED PER PLAN AND INSPECTED BY ARBORIST OR URBAN FORESTER.
 - 9. EXISTING TREES TO REMAIN, UPON DIRECTION OF LANDSCAPE ARCHITECT, SHALL BE PRUNED TO REMOVE DEAD WOOD, DAMAGED, AND RUBBING BRANCHES BY ARBORIST, OR URBAN FORESTER.
 - 10. PLANTS SHALL NOT BE BOUND WITH ROPE OR WIRE AT ANY TIME, AS TO AVOID DAMAGE TO BARK AND BRANCHES.
 - 11. ALL DISTURBED AREAS SHALL BE TREATED WITH 4" TOP SOIL OR COMPOST AND SEEDED OR SODDED TO PREVENT EROSION.
 - 12. SEE L-6 FOR TREE PROTECTION DETAIL (DETAIL NO. 1)

n

0'10'20'40'

Tree Protection Plan








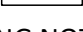
General Notes

J.B	1	12.11
Initials	Revision/Issue	Date

Maxfield
Elementary
School
St. Paul, MN

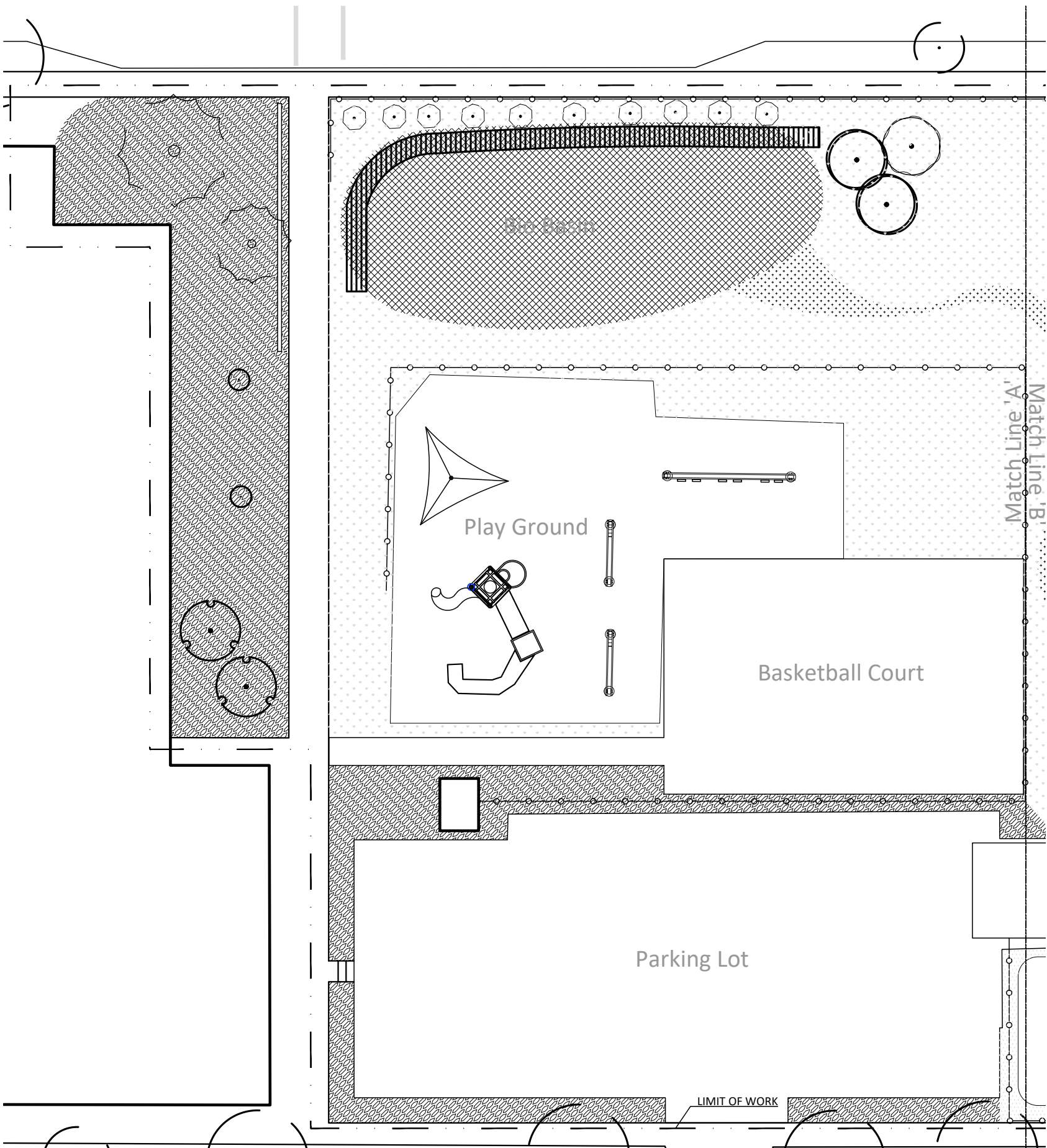
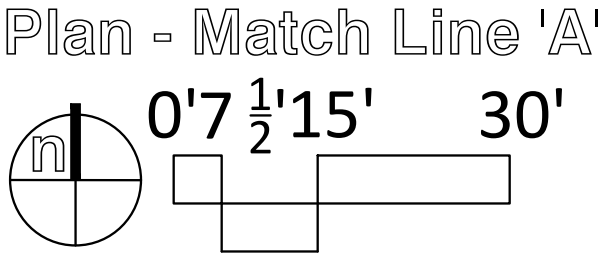
Project Name and Address

12.11.24	TREE PROTECTION PLAN
Date	
1" = 40'	L-2
Scale	Sheet No.

SYMBOL	CODE	BOTANICAL / COMMON NAME	CONT	QTY
TREES				
	HV	Hamamelis virginiana / Common Witch Hazel	1.5" B&B	2
	MI	Malus ioensis / Prairie Crabapple	1.5" B&B	1
	MX	Malus x 'Snowdrift' / Snowdrift Crabapple	1.5" B&B	2
SHRUBS				
	VL	Viburnum lentago / Nannyberry	#1 Cont.	10
SYMBOL	CODE	BOTANICAL / COMMON NAME	SPACING	QTY
GROUND COVERS				
	BP	Bio Plugs / Bio Retention Plug Mix	24" o.c.	5,267 sf
	ST	Seed Mix seed Gertens MN Pollinator Seed Mix		8,566 sf
	TB	Turf Sod Bluegrass / Kentucky Bluegrass		11,088 sf
	TS2	Turf Sod Shade Master / Shade Tolerant Blend		271 sf

PLANTING NOTES:

- NO PLANTS WILL BE INSTALLED UNTIL FINAL GRADING AND CONSTRUCTION HAS BEEN COMPLETED IN IMMEDIATE AREA.
- PLANT SYMBOLS ON PLAN DRAWING TAKE PRECEDENT IF DISCREPANCIES IN QUANTITIES EXISTS. SPECIFICATIONS AND DETAILS TAKE PRECEDENTS OVER NOTES.



General Notes

J.B	1	12.11
Initials	Revision/Issue	Date

Maxfield
Elementary
School
St. Paul, MN

Project Name and Address






PLAN
MATCH- A

L-3

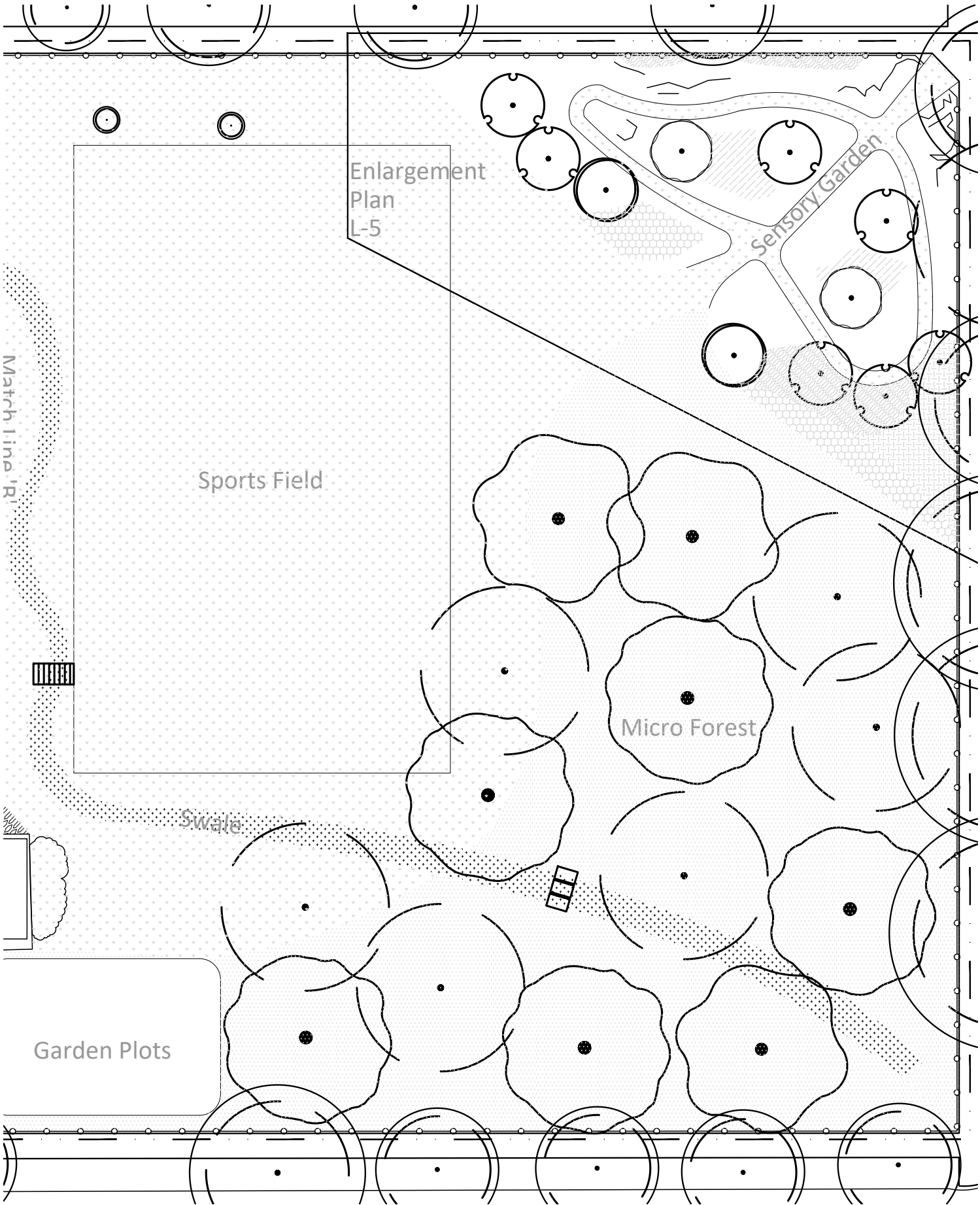
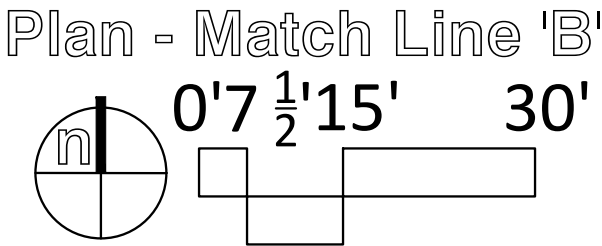
12.11.24
Date

1" = 30'
Scale

Sheet No.

<u>SYMBOL</u>	<u>CODE</u>	<u>BOTANICAL / COMMON NAME</u>	<u>CONT</u>	<u>QTY</u>
TREES				
	GB	Ginkgo biloba 'Magyar' / Magyar Maidenhair Tree	2" B&B	5
	QA	Quercus alba / White Oak	2" B&B	3
	TC	Tilia cordata 'Greenspire' / Greenspire Littleleaf Linden	2" B&B	6
<u>SYMBOL</u>	<u>CODE</u>	<u>BOTANICAL / COMMON NAME</u>	<u>SPACING</u>	<u>QTY</u>
GROUND COVERS				
	TS	Turf Seed - Bio Swale		2,513 sf
	TS2	Turf Sod Shade Master / Shade Tolerant Blend		21,137 sf

- PLANTING NOTES:
- NO PLANTS WILL BE INSTALLED UNTIL FINAL GRADING AND CONSTRUCTION HAS BEEN COMPLETED IN IMMEDIATE AREA.
 - PLANT SYMBOLS ON PLAN DRAWING TAKE PRECEDENT IF DISCREPANCIES IN QUANTITIES EXISTS. SPECIFICATIONS AND DETAILS TAKE PRECEDENTS OVER NOTES.
 - PLANTINGS AND SEEDING INSIDE "ENLARGEMENT PLAN" - L5 NOT INCLUDED IN SCHEDULE; SEE L5 FOR ENLARGEMENT PLAN AND PLANTING SCHEDULE



General Notes

J.B	1	12.11
Initials	Revision/Issue	Date

Maxfield
Elementary
School
St. Paul, MN

Project Name and Address











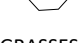



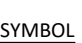

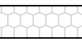
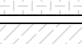





PLAN
MATCH -B

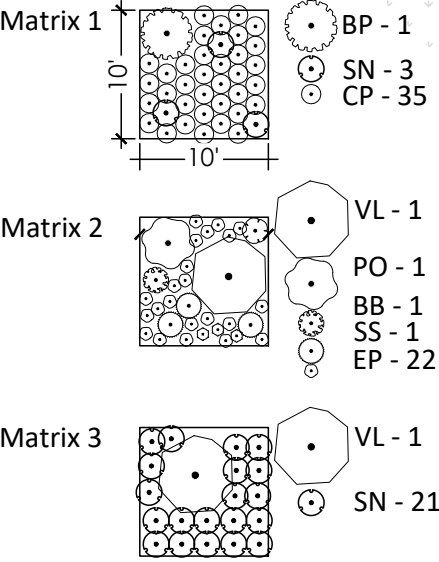
L-4

12.11.24
Date

1" = 30'
Scale

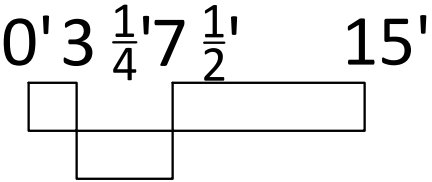
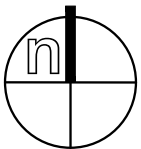
Sheet No.

SYMBOL	CODE	BOTANICAL / COMMON NAME	CONT	QTY
TREES				
	HV	Hamamelis virginiana / Common Witch Hazel	1.5" B&B	7
	MI	Malus ioensis / Prairie Crabapple	1.5" B&B	2
	MX	Malus x 'Snowdrift' / Snowdrift Crabapple	1.5" B&B	2
SHRUBS				
	AF	Agastache foeniculum / Blue Giant Hyssop	#1 Cont.	22
	AT	Asclepias tuberosa / Butterfly Milkweed	#1 Cont.	34
	BA	Baptisia australis / Blue Wild Indigo	#1 Cont.	24
	EP	Echinacea purpurea / Coneflower	#1 Cont.	8
	HM	Helianthus maximiliani / Maximilian Sunflower	#1 Cont.	57
	NX	Nepeta x faassenii / Catmint	#1 Cont.	117
	PO	Physocarpus opulifolius 'Dart's Gold' / Dart's Gold Ninebark	#1 Cont.	19
	SB	Stachys byzantina / Lamb's Ear	#1 Cont.	76
	SN	Symphotrichum novae-angliae / New England Aster	#1 Cont.	22
	VL	Viburnum lentago / Nannyberry	#1 Cont.	14
GRASSES				
	BB	Bouteloua gracilis 'Blonde Ambition' / Blonde Ambition Blue Grama	#1 Cont.	42
	CP	Carex pensylvanica / Pennsylvania Sedge	#1 Cont.	8
	HM2	Hakonechloa macra 'Aureola' / Golden Variegated Forest Grass	#1 Cont.	66
	PV	Panicum virgatum 'Heavy Metal' / Heavy Metal Switch Grass	#1 Cont.	43
	SS	Schizachyrium scoparium 'Blaze' / Blaze Little Bluestem	#1 Cont.	99
SYMBOL	CODE	BOTANICAL / COMMON NAME	SPACING	QTY
GROUND COVERS				
	ST	Gertens MN Pollinator Seed Mix		740 sf
	MA	Matrix Mix 1		602 sf
	MB	Matrix Mix 2		540 sf
	MC	Matrix Mix 3		352 sf
	TB	Turf Sod Bluegrass / Kentucky Bluegrass		28,136 sf



- PLANTING NOTES:
- NO PLANTS WILL BE INSTALLED UNTIL FINAL GRADING AND CONSTRUCTION HAS BEEN COMPLETED IN IMMEDIATE AREA.
 - PLANT SYMBOLS ON PLAN DRAWING TAKE PRECEDENT IF DISCREPANCIES IN QUANTITIES EXISTS. SPECIFICATIONS AND DETAILS TAKE PRECEDENTS OVER NOTES.
 - SEEDED AREAS WITH 'GERTENS MN POLLINATOR SEED MIX' REQUIRE A SPECIAL ESTABLISHMENT PERIOD. SEE SEEDING PLAN FOR SPECIFICS.

Sensory Garden
Enlargement



General Notes

J.B Initials	1 Revision/Issue	12.11 Date
-----------------	---------------------	---------------

Maxfield
Elementary
School
St. Paul, MN

Project Name and Address

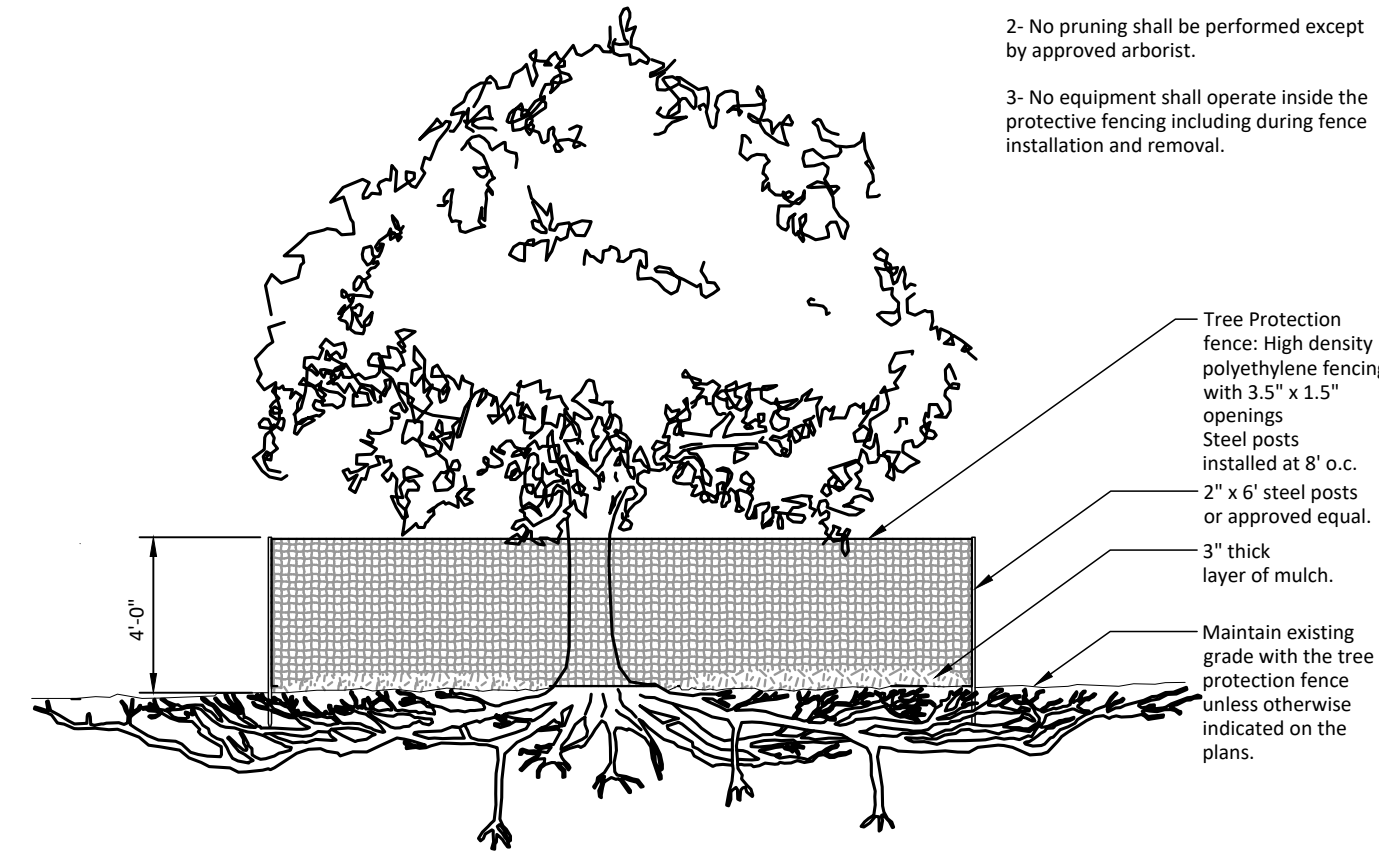
ENLARGEMENT
PLAN

12.11.24
Date

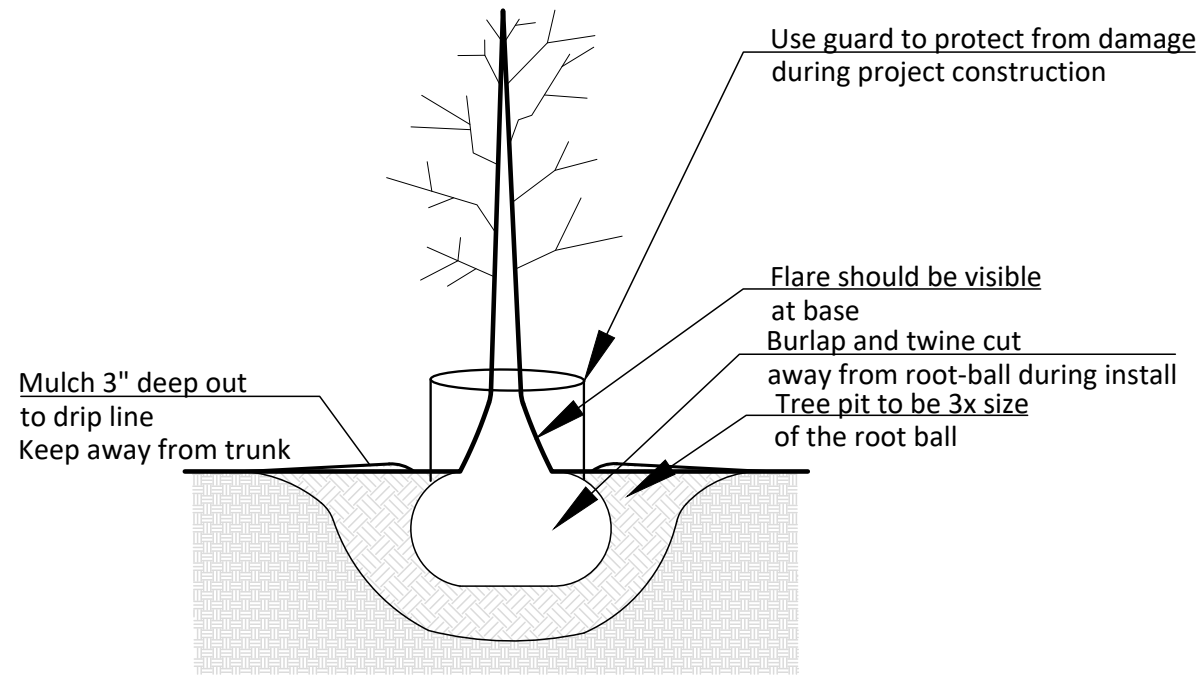
1" = 15'
Scale

Sheet No.

L-5

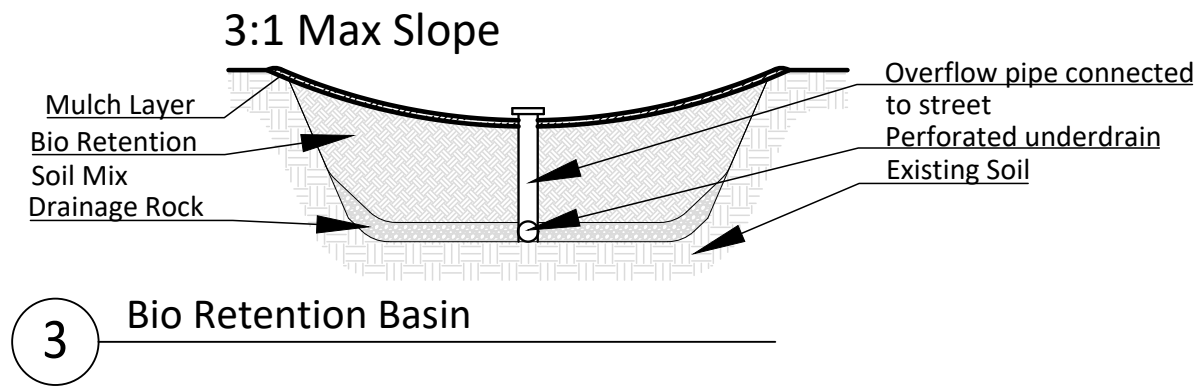


1 TREE PROTECTION



2 TREE PLANTING

- Notes:
- 1- If there is no existing irrigation, see specifications for watering requirements.
 - 2- No pruning shall be performed except by approved arborist.
 - 3- No equipment shall operate inside the protective fencing including during fence installation and removal.



3 Bio Retention Basin

General Notes		
J.B Initials	1 Revision/Issue	12.11 Date
Maxfield Elementary School St. Paul, MN		
Project Name and Address		
	DETAILS	
12.11.24 Date	L-6	
Scale	Sheet No.	