

Northcentral Technical College

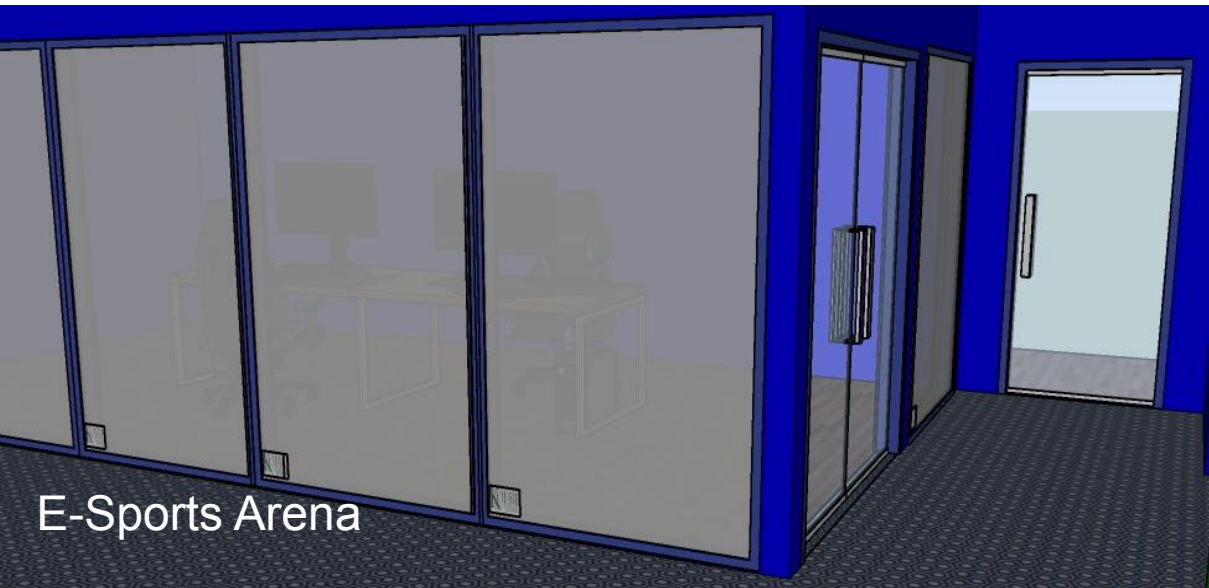
Phillips Technology Hub



Lane Schultz, Samantha Marsh-Johnson, Joey Bean

Wants & Needs

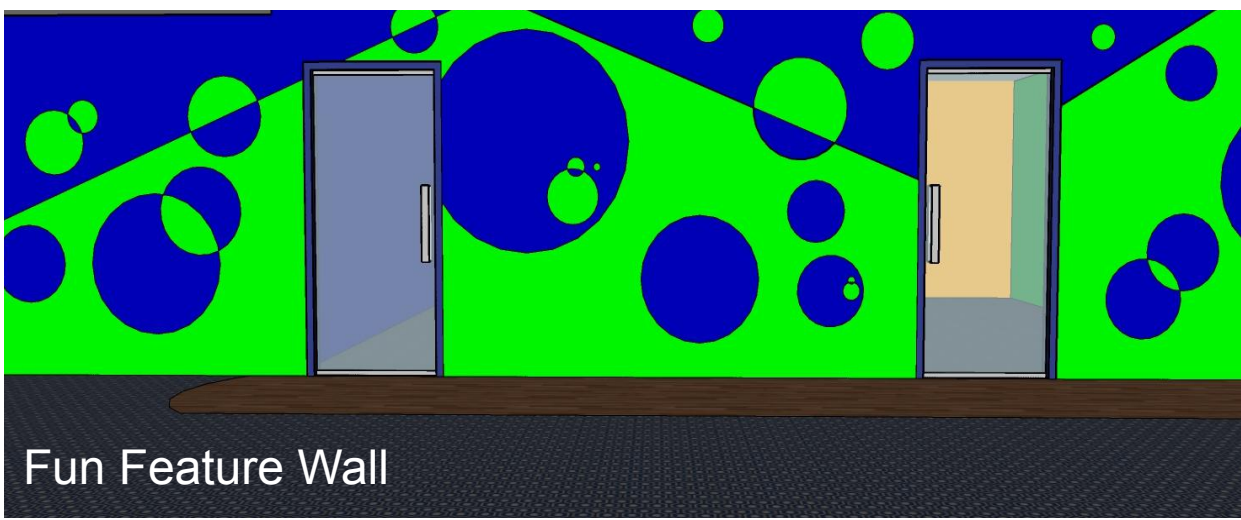
- Open Space with Technology
- Spaces for Group Work
- Study Spaces
- Private Office Spaces
- Conference Rooms
- Quiet Environments
- E-Sports spectator area
- Flexibility and Moving Furniture
- Help Desk
- Fax/Scanning/Printing Services
- Laptop/MIFI Checkout
- Outdoor Charging Area
- Quality internet access available to community in outdoor area



E-Sports Arena



Cyber Cafe



Fun Feature Wall

Design Features

- Main Entrance is a glass double door featuring windows on either side
- New outdoor area - featuring comfortable seating, internet access, and charging ports
- Windows added to the E-Sports arena for spectator
- Open floor plan for Cyber Cafe area
- Fun feature wall
- Colorful pallet for walls and flooring

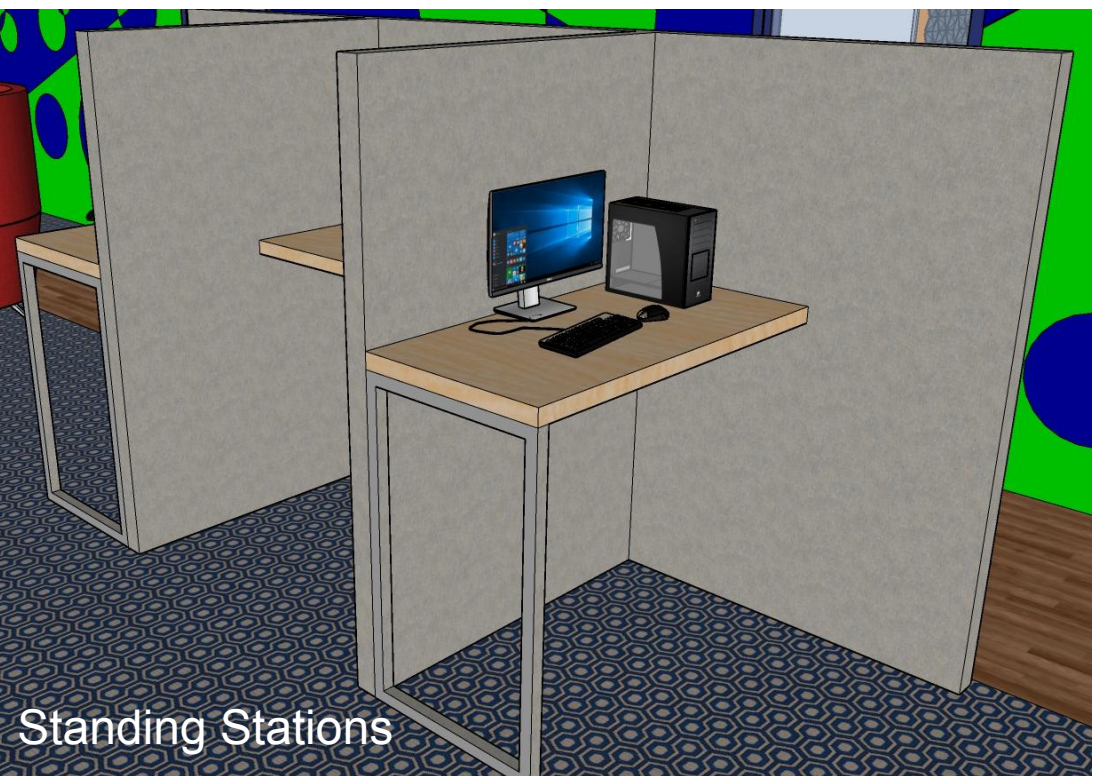
Special Features

Variety of work stations in Cyber Cafe area

- Standing stations
- BYOD stations
- Quiet BYOD Pods
- Traditional work stations

Flex Lab/CPC/ARC/Large Conference room

- Conference Table
- Dry Erase Table
- Room divider screen
- Moveable dry erase board



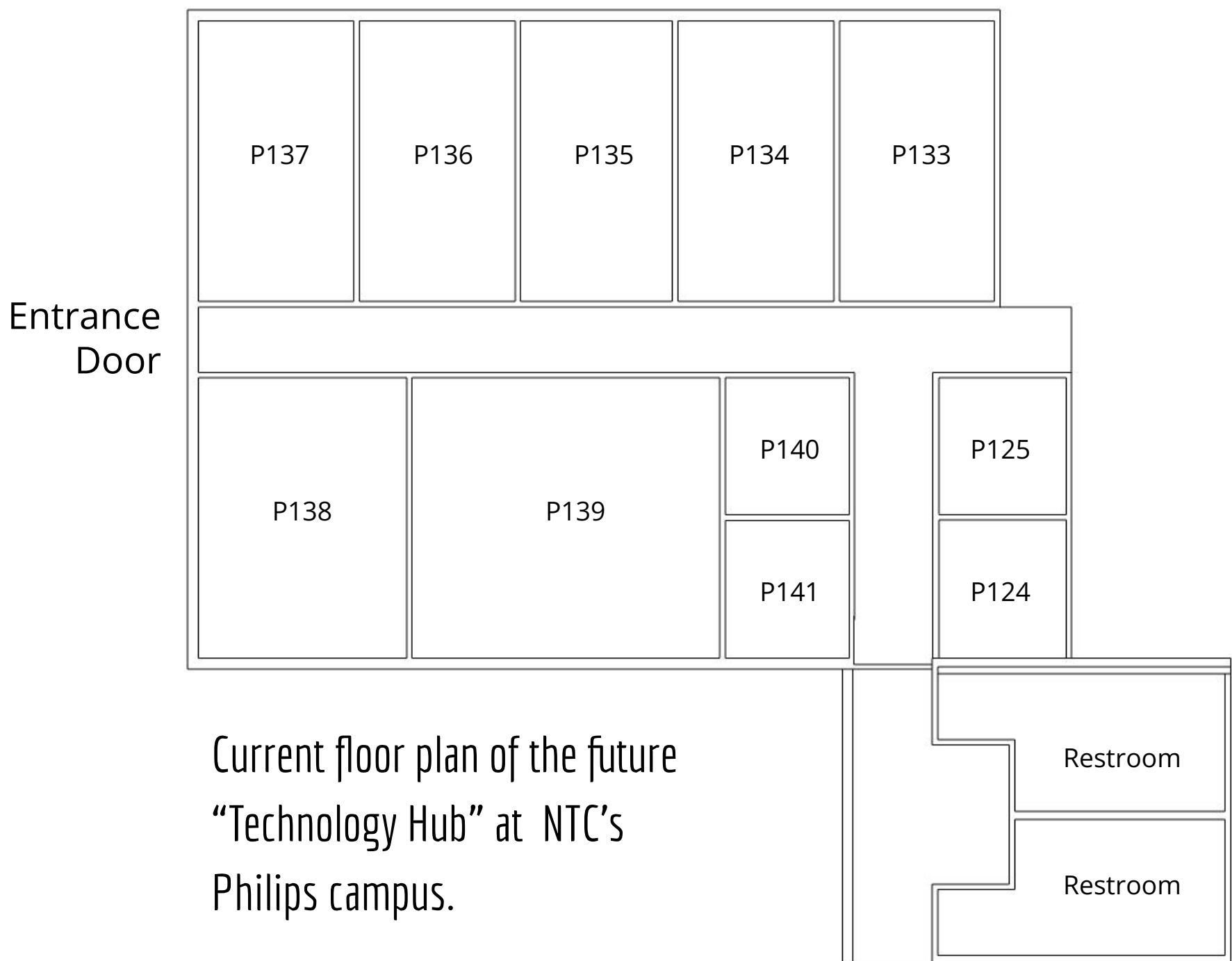
Standing Stations



Vending

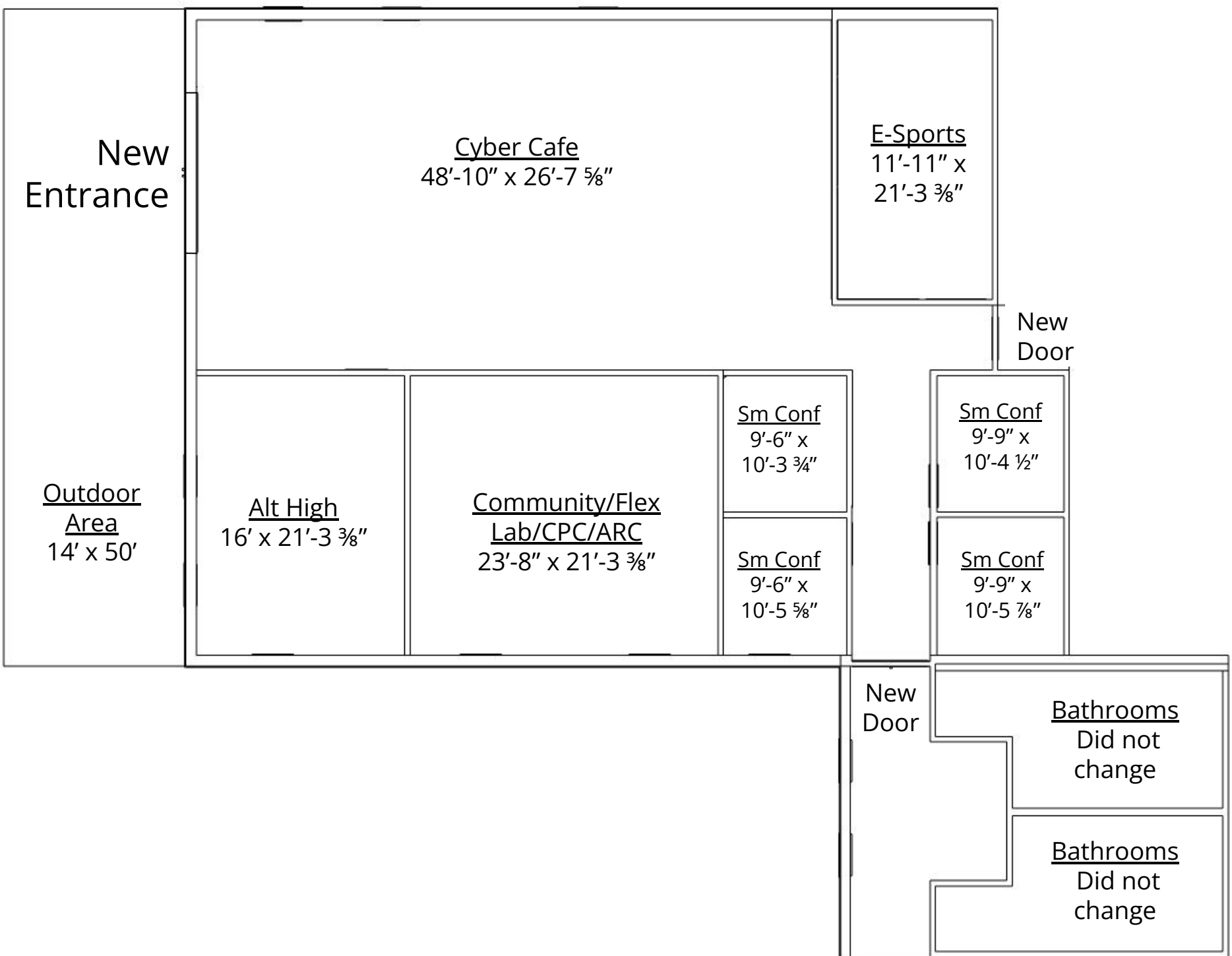


Floor Plan - Before



Current floor plan of the future "Technology Hub" at NTC's Philips campus.

Floor Plan - After



- Removed interior walls for rooms P134, P135, P136, & P137.
- Moved entrance door and increased the size
- Added doors in hallways leading to other parts of the building