

E-PRO FOR EDUCATION

End to End Solution for Managing Applicants During Recruitment and Students During Program Enrollment



A modern solution to attract, engage and communicate better with your students at the different points of the student lifecycle.

E- Pro for Education enables you to keep your stakeholder's information up-to-date by facilitating and tracking every interaction you have with them across different platforms, no matter where they are in the world.



Why E-Pro for Education?

- Increase admission and retention rates
- Better communication with the students
- Reduce cost
- Improve quality of your services
- Increase productivity

Benefits for staff

- Optimized daily activities for better productivity
- Automated and paperless business processes for improved efficiency
- Improved collaboration and communication process

Shorten recruitment cycles

Benefits for management

- Better insights on students demands
- Increased operational efficiency
- Faster and Smarter decisions

Free up staff to focus on other tasks

Benefits for students

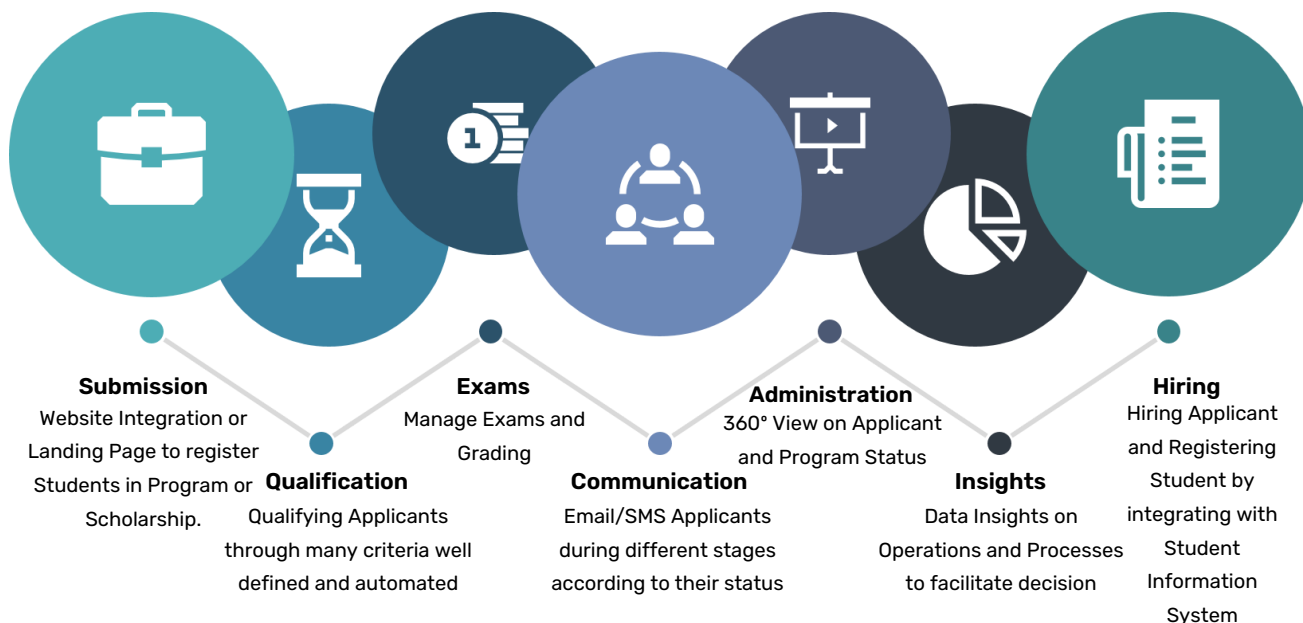
- Improved student journey
- Personalized experience and contextual content
- Enhanced communication with the academic institution

Increase student satisfaction

Our Promise to you: Best integrated solution will be delivered in short time with seamless adoption and smooth rollout

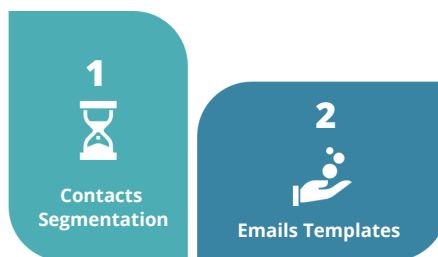
E-Pro for education is a cost-effective solution that will enhance your conversion rate and increase your admission efficiency. We'll work with you to achieve your business and academic goals.

Student Recruitment Cycle



Email Marketing

Define all your contacts details as Applicants, Students, Donors, Alumni, Instructor, Employer,... Classify your contacts into different Segments dynamically based on Query to easily communicate with them.



Design all your Email Templates with drag and drop features to include any Component such as Image, Video, Text, Link,... Templates can be for Newsletters, Events, Announcements,...

Keep track of the way your contacts react to your various marketing initiatives and provides detailed analytical views to help you understand your impact and learn what works best.

Design the Student Journey by linking Email Template, Landing Page with Contact Segment and monitor the Contact Interactions of reading email, opening link within email, Forwarding email, Not read, and to perform certain activities based on that such as Create Lead, Resend Email, Update Contact Info,...

Event Planning

Attendee Passes
Managing Attendee Passes to grant access to specific sessions or tracks

Venue Management
Tracking buildings, rooms, and room layouts

Sponsorship
Tracking sponsors and their sponsorships for each event.

Sessions & Speakers
Define Session, Session Track and Speaker per Event



Event Website
Self-service attendee registration. Important details about all published events, including event name, venue, passes, session schedule, and speakers.

Our Offer : 1.Consultancy & Implementation for our Solution 2.We guarantee ROI in short time 3.Suits your need with a reasonable budget 4.Meets your Objectives & Expectations