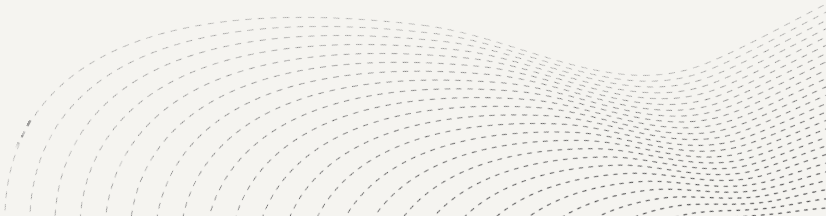


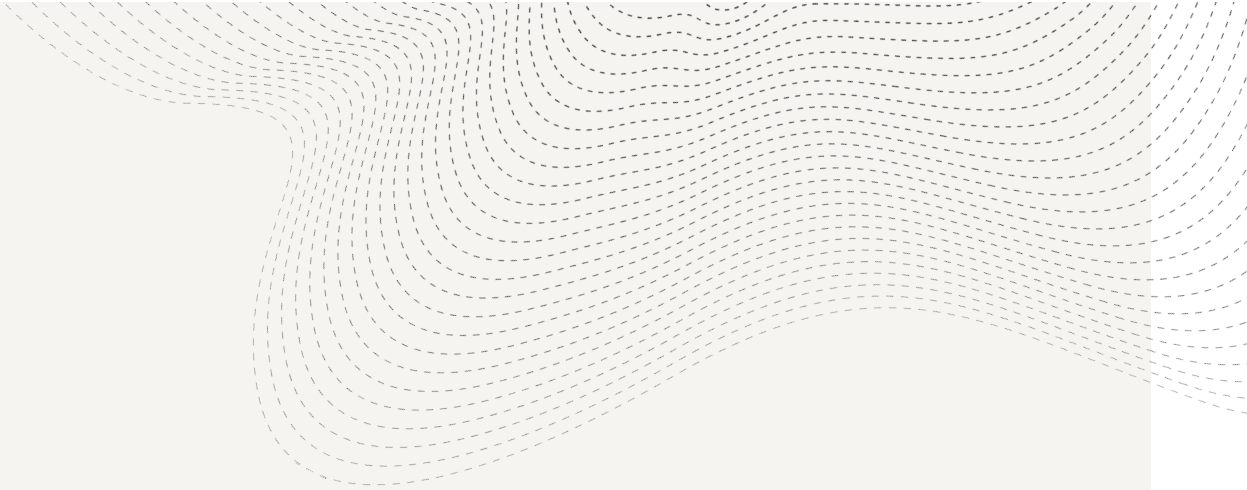


OŪMÄEM

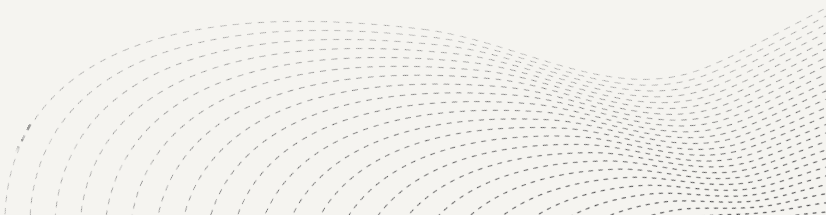
BY ANAS ALOMAIM

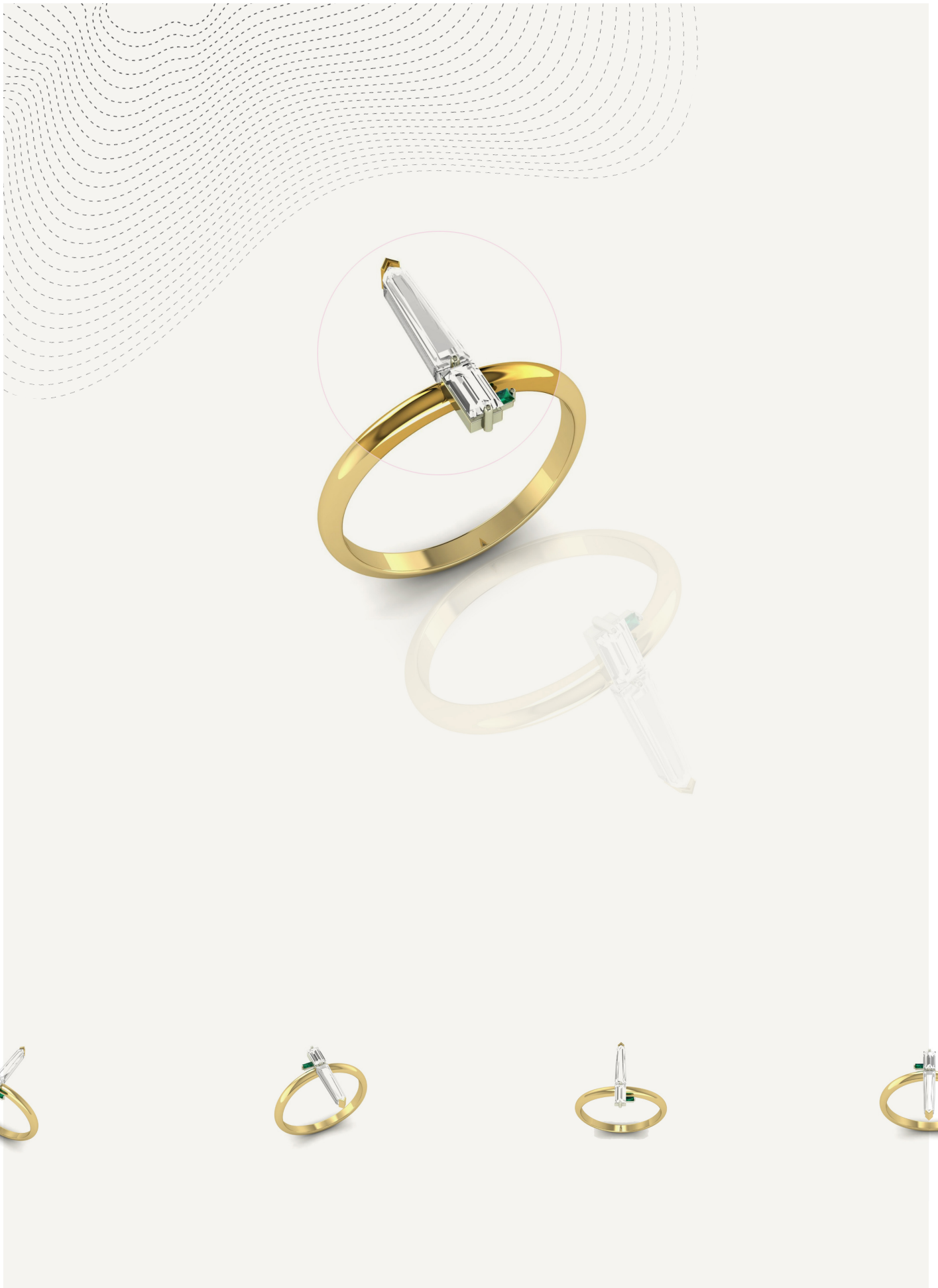
C O R E





OŪMÄEM'S CORE collection is inspired by the geology of planet Earth, it highlights the importance of time in the process of minerals creation and the prominence of earthly resources. The designs of this collection focus on yellow gold, tapered baguettes and green emeralds. Planet Earth has three layers, Crust, Mantle, and Core. The Yellow gold signifies the high temperatures of Earth's Core layer, the tapered baguettes refer to the Mantle layer, and the lush emerald green reflects the Crust layer. All diamonds of this collection are repurposed diamonds from previous jewelry pieces, highlighting the environmental message behind this collection. The CORE collection is incomplete due to the 2020 pandemic.





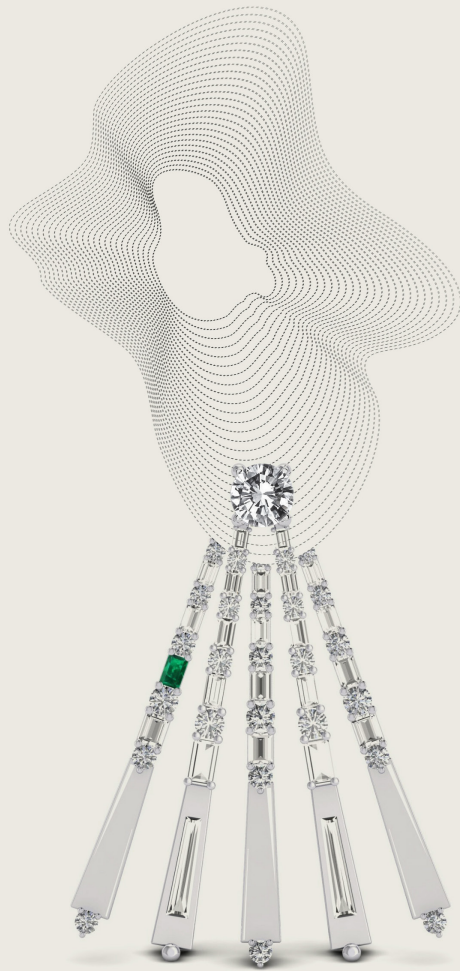
OBELISQUE RING



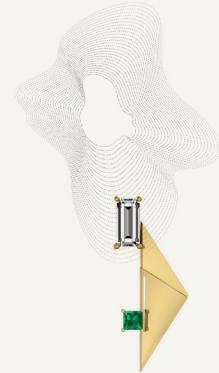
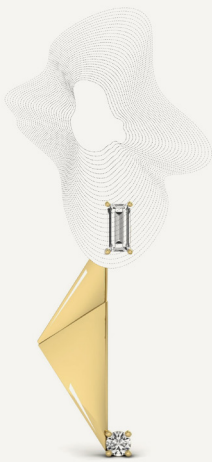
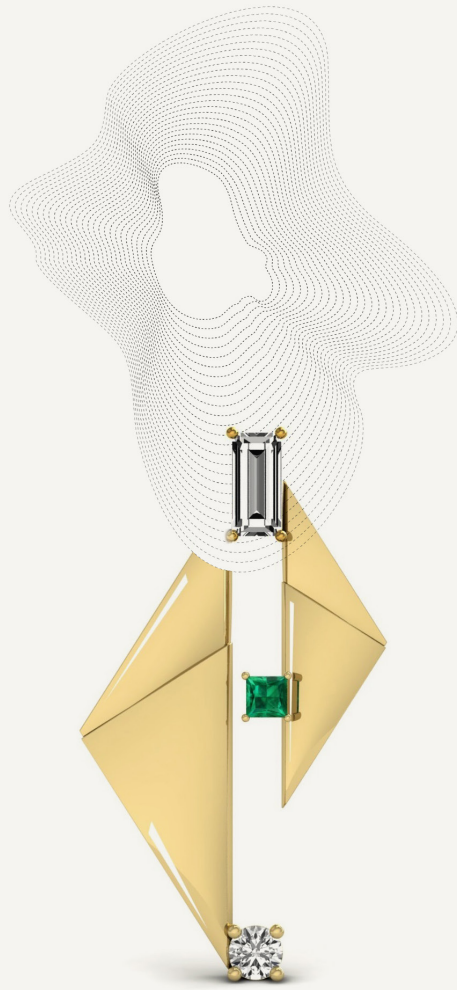
ISOMORPH RING



ROTUNDA RING



FOLD EARRING



CUSP EARRING



Obelisque | Rotunda | Gist | Rift