



# Pewaukee Area Historical Society

Clark House Museum  
206 East Wisconsin Avenue  
Pewaukee, Wisconsin 53072

**2022 Museum Hours:**  
May 29 through October 30  
Sundays 1-4 pm  
June 1 through August 31  
Wednesdays 7-9 pm

Email: [info@pewaukeehistory.org](mailto:info@pewaukeehistory.org)  
Website: [www.pewaukeehistory.org](http://www.pewaukeehistory.org)  
[www.facebook.com/pewaukeehistory](https://www.facebook.com/pewaukeehistory)  
262-691-0233

Spring, 2022

## Upcoming Events

Mark your Calendars!

Apr. 27-Spring Mtg.  
7:00 pm  
Steele Exhibit Bldg.

May 26-Community  
Night 7:00 pm  
(hosted by Pewaukee H.S.  
History students)

June 12 - Show Us  
Your Collection

July 10 - Ice Cream  
Social

Sept. 11 - Harvest Fest

Oct. 6-8-Rummage Sale

Oct. 26 - Fall Mtg.

Dec. 3 - Tree Lighting

## Welcome Spring!!

The Clark House will be open soon (May 29<sup>th</sup>) for free tours, our annual events are all on our schedule and we're looking forward to a great year. Hope to see you!



## PAHS Spring Meeting April 27<sup>th</sup> at 7:00 pm Steele Exhibit Building

by Jeff Phillips

Following a brief business meeting, our guest speaker will be Robert Brown, speaking on his Civil War Museum in Delafield.



Brown retired in 2016 and decided to rent a Delafield office space to spread out his Civil War collection of maps and books from his visits to more than 50 Civil War battlefields around the United States over the past 12 years.

Plan on attending to meet some friends you haven't seen for awhile and learn about our history. Bring a friend and enjoy refreshments.

## Community Night Returns! May 26<sup>th</sup> at 7:00 pm Steele Exhibit Building

by Aaron Yuskis

Pewaukee H.S. History Teacher

On Thursday, May 26 at 7:00 pm students from Pewaukee High School's Advanced US History class will be organizing a Community Night to be held in the Steele Exhibit Bldg. The theme of the evening will be the *Space Race*. Born in the context of the Cold War, space travel changed American culture and still captivates the imagination of Americans with the international Space Station and talk of a future mission to Mars.

Please join us for some prepared presentations and be ready to share your memories as we hope to make this an interactive evening.

Invite a friend to join you, everyone is welcome!



## Congratulations Carole!

Carole Brinkman was awarded the PAHS 2021 Volunteer of the Year award at PAHS Annual Meeting on January 26, 2022. She accepted the award from Jeff Phillips and Cliff Muehlenberg.



## Financial Report

by Tom Brick, Treasurer

During 2021, we spent over \$10,000 on long overdue repairs and painting on the exterior of our 175 year old Clark House. Rotted boards were replaced, windows and edges were caulked and the entire exterior has been painted.

Because our normal summer and fall events resumed in 2021, our revenue increased about \$5,000 from the previous year.

The net affect was a loss of about (-\$1,900) for the 2021 year.

## Keep The Home Fires Burning . . .

by Tom Brick

At the Clark House, we like to talk about the ages of our buildings and our artifacts, the older the better. We have been in the Clark House for almost 30 years and, of course, so has our furnace. With furnaces, older is not better, and ours needs replacing. We have setup a "Furnace Replacement Fund" to help pay for a new furnace. Any donations would be very much appreciated and can be sent to PAHS at 206 E. Wisconsin Ave., Pewaukee, WI 53072.

## Show Us Your Collection June 12<sup>th</sup> Noon-4:00 pm

by Cliff Muehlenberg

Almost everyone collects something. I bet if you think long enough, you might realize that you too have a collection. Would you like to share it with someone? If so, you can be part of PAHS 7<sup>th</sup> Show Us Your Collection event. If you'd rather just see what others collect, you can come to the Steele Exhibit Bldg. on June 12<sup>th</sup> to check out the displays.

We already have some col-

lectors lined up but we have space for more. Setup is at 11:00 am with visitors arriving starting at noon. If you want to display your collection leave a message or send an email (*contact info on page 1*). There is no charge for PAHS members, but non-members will be asked for a \$10 table fee.

Attend to see what people collect or share yours with others. It's a great way to spend a Sunday afternoon.

## Baseball Memories

by Dick Hoffmann

Recently, the Boston (oops, wrong), Milwaukee (oops, wrong), Atlanta Braves (yes) won the World Series. Watching them, brought to mind two things 1) an autographed ball of the 1961 Milwaukee Braves team that I recently unearthed in my "stuff", and 2) my two summers as a teenager (1960 and 1961) working in the office for the Braves. Those two things are related since, because of my job, I had the opportunity to pick up that baseball.

Note: Apparently, there are no Watts-type families from Pewaukee who had sons make it to the major leagues. The Baseball Almanac lists 253 players from Wisconsin who are or have played in the major leagues. Alas, none were born in Pewaukee.

Back to the autographed baseball. I can vouch for its age since it has the name of Warren Giles (who was National League President from 1951 - 1969) printed on it. Given that such baseballs were not in general circulation, it definitely is an official National League Baseball.

However, what makes this particular baseball really special is that it has the signatures of four Baseball Hall of Famers; Joe Torre, Warren Spahn, Eddie Mathews, and Hank Aaron. I've never had it appraised or even searched the internet for similar items, but if the signatures are "real", it certainly would be a valuable piece of baseball memorabilia, for some people anyway.

So why do I say "if" the signatures are "real"? Well, from my experiences visiting the Braves clubhouse, there were situations where some players would pay clubhouse kids or other staff to sign for them. Unfortunately, I do not know the status with my baseball. Perhaps a professional appraiser can answer that question.

TO BE DETERMINED

Perhaps, at the next "Show Us Your Collection" event, I'll bring it along with several other autographed baseballs that I collected at the time.

Not insignificantly, that summer job I referred to above was one unbelievable experience for someone who had never been out of the state except on a train to Washington DC with his 8<sup>th</sup> grade graduation class. In those two years, I traveled with the team to San Francisco, Los Angeles, Saint Louis, Boston, Pittsburgh, and Philadelphia. All first class as you might imagine, after all it was the big leagues! Lots of memories and stories that could fill this newsletter. Maybe some pieces in the future. . . .

Best Wishes to the 2022 Brewers!!

## “And in this corner ...”

by Cliff Muehlenberg

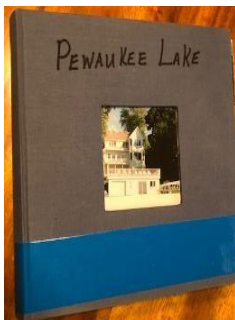
### Read a Good Book lately?

Recently, we had an *unfinished* book given to the historical society. What it needs may be you!

Sherri Mowery Perrigo has compiled a book called, *Boat Houses of Pewaukee Lake*. Some have information about them, the owner, former owners, date built, etc. Others have little or no information other than the picture.

There are many boat houses in the book and if it weren't so late, I'd count them. So, you are invited to stop by and see if yours is there and fill in whatever information you know.

Then as the book is completed it will become more valuable to everyone. And some of the “secrets” of Pewaukee



Lake won't be secrets anymore.

Volunteers are at the Clark House Museum every Wednesday from 1pm to 4pm even in the winter. (We're *always* making history!) Or if you'd prefer, send a pic of your boat house (we need the pic to locate the boat house where we don't have the owner's name.)

If you'd rather do it online, send the pic and information to: [info@pewaukeehistory.org](mailto:info@pewaukeehistory.org).

Remember we'll need the picture to connect the info to the boat house.

Thank you from Sherri and all the Pewaukee historians.

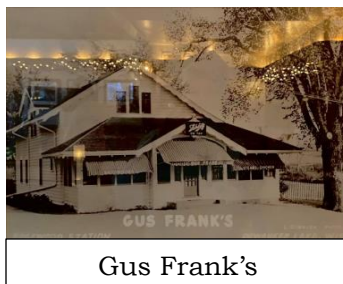
Stop in and learn something about Pewaukee's boat houses.

## The History of Michael's House of Prime

by Jeff Phillips

Pewaukee area residents were treated to a history of the restaurant Michael's House of Prime earlier this year. Also known as Elm Tavern, Gus Frank's, Duke's House of Prime and others.

It started back in 1920, when William, Anna, Henry and Josephine Schmidt, along with William Lehmann took title to the property, which at the time was called Edgewood Station. In 1926, William Lehmann commissioned Herbst & Kuenzel architects to design what would be called Elm Tavern.



Gus Frank's

William Lehmann died in 1934. Linda Lehmann died in 1936 and the property was sold to Gustav and Ella M. Frank.

Shortly after, Waukesha Beach closed not because of the depression but because of World War II. Gus and his two other partners sold the land to Koeppe Realty who developed Beach Park Circle.

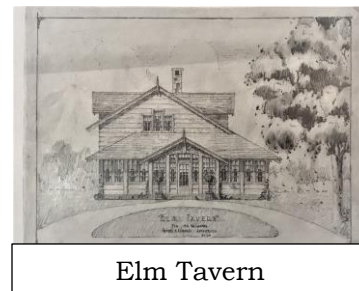
Gus and Ella changed the name of the tavern to Gus Frank's House of Prime.

The business did well because it was supported by the Pewaukee Yacht Club and many others around Waukesha County. Gus Frank's was open every day except Christmas, Easter

and Thanksgiving. Gus's brother Bill was the manager at the Knickerbocker in Milwaukee so the family was somewhat involved with running eating establishments.

Once acquiring the restaurant, Gus used to specialize in inexpensive food and expensive cocktails. I remember him taking a block of ice and tapping it with a maul and a flat blade and he would break off perfect ice cubes. It was amazing! Another thing I remember is the meat hanging in the basement cellar. He would scrape the meat periodically. Another thing was that the steak knives were always very sharp as he stated people associated a good cut of meat if it was easy to cut.

The place went thru some changes one of which was the circle bar, it used to be an L shape which meant Gus had to continually walk from one side to the other. Gus never served tap beer as it took too long to pour the beer, instead he used strictly bottles as you could open bottles three times faster than pour a beer.



Elm Tavern

Gus Frank sold the place several times. The first time to a neighbor growing up who lived on Pewaukee Lake. Milo Esser bought the place and ran it only for a year or so, then Gus got it back. A second person bought it (Donald & Ann Bush) although that

(continued on the next page)

*(Michael's House of Prime continued)*

didn't last long. In the late 1950's, it was named Coffeheads, after a WTMJ radio personality. Then Duke and Blonde (Duane & Evelyn Mitchell) purchased the place in 1971. He purchased the place with the understanding that Gus would work as the bartender for at least two years.

It was a smart move as people came to talk with Gus and Duke and Blonde were the perfect people with the right attitude and personality. Everyone who met them liked them and once again people gravitated to eat there and not at Elsie's across the street.



Gus Frank 1935

Gus worked into his early 70's and Ella into her mid 60's.

Duke entered into a land contract with Raymond & Dorthy Anderson in 1977. In 2000, it was sold to Debora Griepentrog and Judy Lynn Spalsbury. The last owners, Rick and David Buckley took over in 2016. They continued the legacy of great food in a great place. Unfortunately, fire destroyed the building in 2020. Over 90 years of small supper club history leaves a memory for many Pewaukee residents. Thanks to Rick & David Buckley, Tom Frank (grandson of Gus and Ella) and many other family, former workers, and patrons who made this story possible.

## **NEWSLETTER**

### **CONTACT INFORMATION**

Be part of the next PAHS newsletter by submitting an article or other event information to

**Karen Merz – email:**

**info@pewaukeehistory.org**

**Questions? Call Karen at 262-695-0600**

**Deadline for the next newsletter is**

**May 15, 2022**

## **“Like” us on FACEBOOK**

And be the first to hear about PAHS news and events!

**www.facebook.com/pewaukeehistory**

## **BUSINESS MEMBERS**

**Amer. Legion Post 71-Main St., Pwk.**

**Anton's Salon & MSpa-(262)646-9888**

**Bubba's Frozen Custard-(262)695-8189**

**Casa Tequila Restaurant-Pewaukee  
(262)796-6966**

**Century Fence Co. - (262)547-3331**

**Chiropractic & Wellness on**

**Pewaukee Lake – (262)695-0022**

**Chris Lueth – American Family Ins.  
(262) 695-1981**

**First Assoc. Insurance/James Kloth –  
(414)840-2150**

**Five O'Clock Club – (262)691-9960**

**Ken Weber Truck Serv.-(262)691-0333**

**North Shore Bank – (262)691-5740**

**Small World Children's Dentistry – Pwk  
(262)780-9996**

**Waterstone Bank-Pwk - 262)696-7100**

These businesses are partnering with us to show their support to the PAHS. Please remember them when you need their services. Let's keep our Pewaukee businesses in Pewaukee and keep growing our business community!



PAHS receives a 1% rebate on your store receipts from the Sentry store in Delafield. Receipts must be less than 6 months old and can be left in the dresser drawer marked “Sentry receipts” on the screen porch of the Clark House. Thanks for remembering!

**Have you read a  
good brick lately?**

**If not,  
it may be because  
your name's not on it.**

**Still only 50 bucks.**

**Note:** If you have an old family recipe or just one you want to share, please submit it. It would be interesting if you have some background for the recipe to share also.

*From the Kitchen of  
Jim Willis*

**Whole Wheat Banana Bread**

Preheat oven to 350°

- 1-1/4 cups all purpose flour
- 1/2 cup whole wheat flour
- 1 teaspoon baking soda
- 1/4 teaspoon salt
- 1/2 cup sugar
- 1/4 cup vegetable oil
- 1 egg
- 1 cup mashed ripe bananas (about 2 med)
- 1 teaspoon vanilla extract

Combine first 4 ingredients in a small bowl Stir well and set aside.

Mix sugar and oil in a medium bowl (mix until very well blended). Add egg and mix until light and lemon colored.

With mixer running at low speed, add flour mixture alternately with bananas. Blend well after each addition.

Stir in vanilla.

Pour into loaf pan coated with cooking spray (about 3/4 full).

Bake at 350° for 45 minutes or until a pick inserted in center comes out clean.

Cool for 15 minutes in pan, then remove and continue cooling on a wire rack.

(Add nuts if desired during mixing).

**“Mop-heads” clean Steele Exhibit Building floor**

by Cliff Muehlenberg

No no, not the Beatles, our very own “mop-heads”, Dick Rosenberger, Dick Hoffmann, Tom Brick, Jeff Phillips, Duane Bewer and Cliff Muehlenberg.

Leaving no dust kittle unturned, the floor looks like new again. Washed and waxed. Thank you, Mop-heads!



**WELCOME NEW MEMBERS**

Annual Memberships

Lisa Heise

Keith & Nancy Jones

Tessie Tennyson

New Business Member

Waterstone Bank-Pwk / Cassandra Robel

Thank you for your memberships!

**Recent Acquisitions**

by George Strieter

The following donations have been received and will be displayed as space permits.

\**Robert Eifert* – Framed picture of Robert and his brother Russell swimming in Pewaukee Lake with Waukesha Beach in the background.

\**Donald & Blanche Schoenhaar* – Picture painted by Edmont Monte Sheldon of ice boating on Pewaukee Lake in 1954.

\**Brent & Carol Wilder* – Waukesha Beach Pennant and Waukesha Beach postcards.

Thank you for your donations!

**In Memory . . . .**

Helen Miller  
5/31/1931 – 2/16/2022

Helen was a long time annual member and supporter of PAHS.

You are missed!



**NO EXPERIENCE NEEDED**



**MEET NEW PEOPLE – HAVE FUN!**

**Pewaukee Area Historical Society**

**2021 Board of Directors**

President: Jeff Phillips

Vice President: Jim Tredwell

Secretary: Carole Brinkman

Treasurer: Tom Brick

Directors: Dick Hoffmann

Alexandra Lerch-Gaggl

Kathy Losiniecki

Cliff Muehlenberg

Penny Williams

The Society is a nonprofit organization, **501(c)(3)**, dependent upon private funding for capital improvements and ongoing operations. **All gifts are tax deductible to the extent allowed by law.**

Newsletter editor: Karen Merz  
[info@pewaukeehistory.org](mailto:info@pewaukeehistory.org)

**The Clark House**, once a stagecoach inn, is now a museum operated by the Pewaukee Area Historical Society. It is located at the corner of Prospect Avenue and East Wisconsin Avenue in the Village of Pewaukee. There is no admission fee. Donations are accepted.

**The Pewaukee Area Historical Society** (PAHS) is a non-profit, charitable, educational organization founded to research, collect and preserve the history of the Pewaukee area. PAHS invites anyone who has an interest in the history of the Pewaukee area, its people and the community, to become a member.

2022 Museum Hours:

May 29–October 30, Sundays 1-4 pm

June 2–August 31, Wed. 7-9 pm

Or anytime by appointment

Call (262) 691-0233 or

Email [info@pewaukeehistory.org](mailto:info@pewaukeehistory.org)

Pewaukee Area Historical Society  
206 E. Wisconsin Avenue  
Pewaukee, Wisconsin 53072  
Address Service Requested