

Pivot.City Lite Paper: Agentic Entrepreneur Support System (AESS)

Issue: Vertical integration of artificial intelligence in entrepreneur support within internal and external ecosystems. (AI-Empowered Entrepreneur Support)

Audience: Accelerators, Entrepreneurs, Entrepreneur Educators, Ecosystem Developers, Economic Developers, Entrepreneur Resource Providers, Small Business Development Organizations, and Vendor Development Professionals.

Underlying Challenges: Traditional entrepreneur resource providers have been challenged for decades with limited resource mobilization and outdated or static market insights. This position generally forces generic advice because of a lack of automation and interoperability. While there are higher level resources in some ecosystems, that offer more sophistication and interoperability, most entrepreneur ecosystem assets across the country are driven by management effort and enterprise capability. Those factors will continue to limit where effective entrepreneur education and development takes place until we advance the infrastructure and architecture of entrepreneur ecosystems, especially in rural and urban markets.

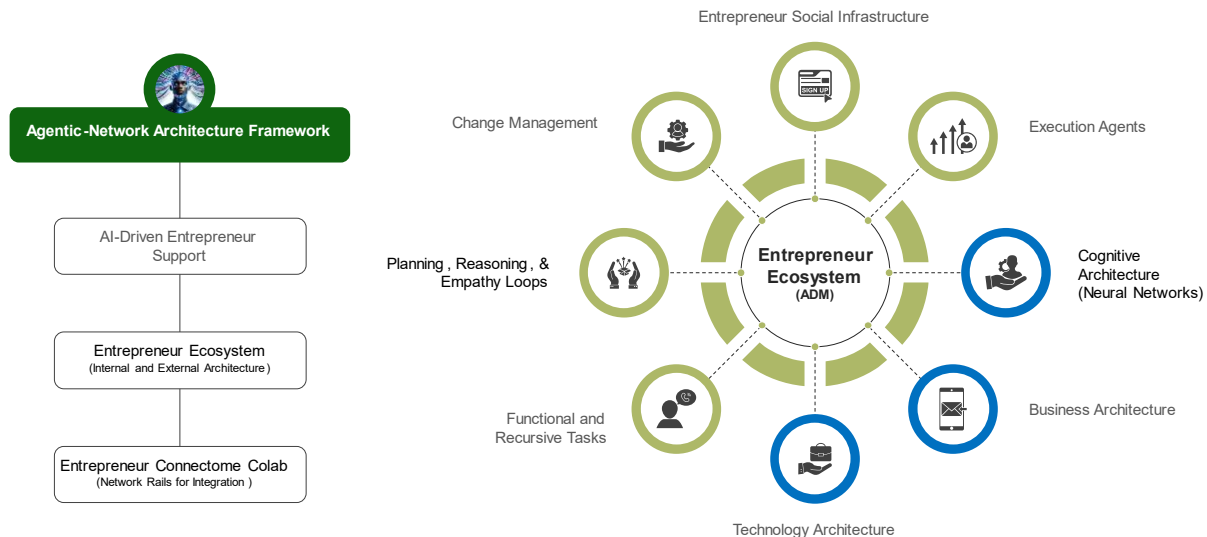
Entrepreneurial Frameworks Impacted:

- Enterprise Architecture, Business Architecture, & Entrepreneur Ecosystem Architecture
- Entrepreneur Social Infrastructure → Entrepreneur Ecosystem → Connectome → AESS
- Agentic-Network Architecture Rails: Cognition, Business, and Technology

Concept: The Agentic Entrepreneur Support System (AESS), an evolution of entrepreneur ecosystems, is an AI-driven entrepreneur support methodology and architecture (Robinson, 2024); it is designed to expand enterprise capabilities. The framework, influenced by TOGAF, enables enterprises to leverage a range of artificial intelligence assets to improve management capability towards interoperability and sophistication. The AESS is comprised of a three-element architectural framework with eight components individualized to an entrepreneur ecosystem asset. The system is catalyzed by the interaction and purpose of execution agents engaged with entrepreneur support. The AESS addresses some of the existing limitations at the provider level (accelerator, bank, economic development, vendor certification, etc.) and enhance capabilities at the ecosystem level across multiple dimensions.

Applications: PreAccelerator/Accelerator Activities, Vendor Development Activities, and Opportunity Validation (Education) have had AI/Agentic AI agent collaborations applied to their processes in Jacksonville, FL since 2022.

Agentic Entrepreneur Support System



A community's existing entrepreneur social infrastructure serves as the foundation of its emergent Agentic-Network Architecture and Architectural Development Methods (ADM). The constructs of the architectural framework are infrastructure maturity, resource mobilization, and ecosystem layers to ensure effective vertical integrations.

- The core concepts of entrepreneur support within an ecosystem guide entrepreneur interaction, entrepreneur purpose, and agentic-network formation.
- The framework principles can be used by small, medium, and large firms that engage with ventures as well as municipalities, government departments, and non-profit organizations that may certify them for procurement opportunities.
- Influenced by TOGAF, the framework is designed as a form of business architecture where firms can leverage the vertical integration of artificial intelligence to efficiently scale entrepreneur support throughout an ecosystem.
- Three categories of human oversight: AI-Assisted, AI-Empowered, and AI-Enabled.
- The fundamental components of architecture (above) include Execution Agents (Human Agents, AI-Agents, Paired Agents, and Agentic-AI), Planning and Reasoning Loops, and Tasks (Ques, Recursive, Functional, and Learning Paths).
- The ADM (method) enables communities to configure entrepreneur support assets and catalyze entrepreneur interactions through execution frameworks, hybrid intelligence ecosystems, network architecture, and vertical integration.
- The Agentic-Network Architecture taxonomy emphasizes a **framework** and **method (ADM)** moderated by a **three-rail system** for effective vertical integration & interoperability throughout an entrepreneur ecosystem.

Inquiries: carlton.robinson@gmail.com or <https://www.linkedin.com/in/doccllr/>