

## Be Part of the Solution!

### Common Sense Precautions:

- Do not burn within 50 feet of any structure.
- Do not burn near landfills.
- Do not burn near streams or sinkholes.
- Do not burn near utility lines.
- Do not burn on windy days.

### Alternatives to Open Burning:

#### Reduce, Reuse, and Recycle

- Donate old clothes, shoes, books, appliances, electronics, furniture and toys to charity.

- Carry a coffee mug with you instead of disposable cups.

- Bring your own cloth bag to the store.

- Many counties in Kentucky have a community recycling center that accepts some or all of these:

Newspaper	Aluminum
Plastics #1 - #7	Steel
Cardboard	Glass

#### Compost

- Leaves and grass clippings can be turned into compost for your garden or houseplants.

- Tie four wood pallets together to make a simple compost bin.

#### Landfill

- Items that cannot be reused or recycled should be taken to a landfill or solid waste transfer station. Many counties have one day a month FREE of charge.

Contact your local solid waste coordinator for more information or visit [bit.ly/KYWasteManagement](http://bit.ly/KYWasteManagement) for a county-by-county listing of recycling centers.

## Report Illegal Burning: 502-782-6592

Or contact one of these regional offices:

### Air Quality REGIONAL OFFICES

Ashland	(606) 929-5285
Bowling Green	(270) 746-7475
Florence	(859) 525-4923
Frankfort	(502) 564-3358
Hazard	(606) 435-6022
London	(606) 330-2080
Owensboro	(270) 687-7304
Paducah	(270) 898-8468

### OTHER CONTACTS

#### 24-hour Environmental Emergency: (800) 928-2380

Louisville Metro APCD	(502) 574-6000
Division of Forestry	(502) 564-4496
Fire Marshal's Office	(502) 573-0382
Kentucky Fire Commission	(800) 782-6823
Division of Waste Mgmt.	(502) 564-6716
Dept. of Fish & Wildlife	(800) 858-1549



Division for Air Quality  
300 Sower Blvd., 2nd Floor  
Frankfort, KY 40601

Phone: (502) 564-3999  
Fax: (502) 564-4245  
E-mail: [burnlaw@ky.gov](mailto:burnlaw@ky.gov)

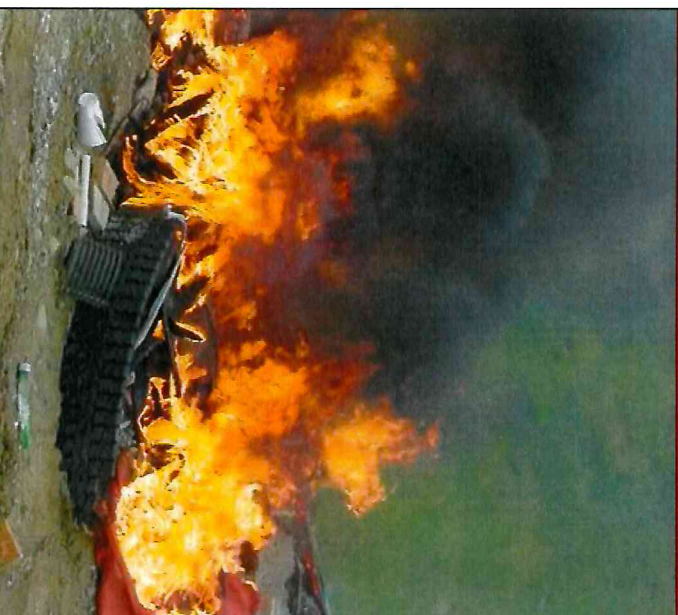
The Kentucky Energy and Environment Cabinet does not discriminate on the basis of race, color, national origin, sex, age, religion or disability, sexual orientation, gender identity, ancestry or veteran status, and provides, on request reasonable accommodations including auxiliary aids and services necessary to afford an individual with a disability an equal opportunity to participate in all services, programs and activities. To request materials in an alternative format, contact the Division. Hearing-and-speech-impaired persons can contact the agency by using the Kentucky Relay Service, a toll-free telecommunication device for the deaf (TTY). For voice to TTY, call 1-800-648-6057. For TTY to voice, call 1-800-648-6056.

Printed on recycled paper with state funds.

Revised 8/21

# Open Burning?

## Learn BEFORE You Burn!



**ILLEGAL OPEN BURNING LIKE THIS COULD  
RESULT IN FINES OF UP TO \$25,000!**

Report Illegal Burning: 502-782-6592  
[burnlaw@ky.gov](mailto:burnlaw@ky.gov)

Kentucky Division for Air Quality  
[sec.ky.gov/Environmental-Protection/Air](http://sec.ky.gov/Environmental-Protection/Air)



# ILLEGAL OPEN BURNING

## Home & Farm

Animal Bedding  
Hay  
Muck Piles (manure/hay)

Grass Clippings  
Agricultural Plastic  
Barns, trailers

## Construction

Asbestos Materials  
Construction Debris  
Renovation Debris  
Shingles

Buildings  
Demolition Debris  
Drywall

## Household Garbage

Animal or Vegetable Matter  
Plastic  
Coated paper products

Cans  
Glass

## Wood Materials

Fence Posts  
Sawdust  
Wood Mulch  
Painted, Stained, or Pressure-Treated Wood  
All wood building materials

Pallets  
Wood Chips  
Wood Shavings

## Miscellaneous

Chemical Containers  
Insulation  
Carpeting  
Tires  
Waste from Industries, Businesses, Schools, Churches, and Farms

Coated Wire  
Furniture  
Rubber  
Used Oil

## Report Illegal Burning

Illegal open burning is harmful to human health and to the environment. Report suspected cases of illegal burning by calling the open burning complaints and information line:

**502-782-6592**

## Learn Before You Burn

Open burning is outdoor burning, with no chimney or pollution controls. According to KY Title 401 KAR 63.005, some open burning is legal, with restrictions. But **most materials are actually illegal to burn outdoors**. The Division for Air Quality can impose **finest of up to \$25,000** per day per violation of the law. It pays to learn before you burn!

## Serious Health Risks

Today's trash is different than our grandparents' trash. Plastics, chemicals, and other synthetic materials are common in the stuff we throw away. Burning this trash releases high levels of toxic pollutants such as dioxins, lead, and mercury. Children, the elderly, and people with heart and lung problems are especially sensitive to smoke from open burning.



## What are Dioxins?

Even the most common household trash produces **dioxins** when burned. Dioxins are dangerous at extremely low levels and have been linked to cancer and other serious health problems. The EPA has shown that open burning of household garbage is the nation's largest source of non-industrial dioxin emissions.

Dioxins from open burning end up in our water and soil. They accumulate in animal tissue and enter our food supply, especially when we consume meat and dairy products.

# LEGAL OPEN BURNING

(except where prohibited by local ordinance)

## Agriculture

Plant Beds  
Tobacco Curing

## Land Management (Onsite Only)

Storm Debris (tree limbs) \*  
Natural Growth from Land Clearing \*  
Natural Land Management \*

## Construction Site Warning Fires

Contained in 55 gallon drum (maximum)  
Clean lumber only  
Only when air temperature is below 50°

## Miscellaneous

Camp Fires (cured/seasoned wood)  
Ceremonial Bonfires  
Cooking  
Uncoated Household Paper & Cardboard Products \*

\* Except in current or former non-attainment counties during ozone season; see below.

## ADDITIONAL RESTRICTIONS

- **Fire Emergencies:** ALL open burning is prohibited when a fire emergency is declared.
- **Fire Hazard Season:** From Oct. 1 - Dec. 15 and from Feb. 15 - Apr. 30, burning within 150 feet of any woodland area is allowed only between 6 PM & 6 AM.
- **Non-Attainment Counties:** From May-Sept., open burning is further restricted in the following counties: Boone, Boyd, Bullitt, Campbell, Jefferson, Kenton, Lawrence, & Oldham. These counties are or were previously designated "non-attainment" for ozone and/or particulate matter because their pollution levels exceeded those permitted by the federal Clean Air Act.

Protect your children's health. Be a good neighbor. Follow the law. Do not burn illegally!