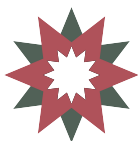




COMPLETION





Gingerbread House Day

Gingerbread houses became popular in Europe after Hansel and Gretel made the idea of an edible house famous.

Sweet and playful, a gingerbread house can also symbolize something deeper — that a home is more than walls.

During the holidays, people gather, cook, decorate, and tell stories.

The “house” becomes a symbol of togetherness.



What must a place have to truly feel like “home”?

QUESTION





MEMORY





Memory & Peace

Some dates stay in history not because they are joyful — but because they changed the world.

November 11 marks the end of World War I in 1918.

On this day, many countries pause to remember.

Memory is not about reliving the past — it is about understanding it.

Stories passed down through generations can help us see what conflict costs and why peace matters.



What lesson from your parents or grandparents should not be forgotten?

QUESTION





REFLECTION





The Power of the Unseen

Today mixes three very different celebrations:
Stage Management Day
World Porridge Day
National Handbag Day

At first glance, they seem unrelated.

But they share one idea: The things that hold life together are often unseen.

A stage manager keeps a performance running.

A simple bowl of porridge fuels the day.

A handbag carries what we need.



Where does your potato come from before it reaches your plate?

QUESTION





HARVEST





Teddy Bear & Share Your Care Day

A teddy bear is one of the most recognizable comfort objects in the world.

Share Your Care Day reminds us that comfort can be given.

These days were created to remind us that comfort matters, especially for children in hospitals, shelters, or difficult situations. It's about sending warmth to someone who needs it most.

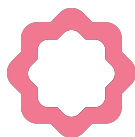


QUESTION





TRANSITION



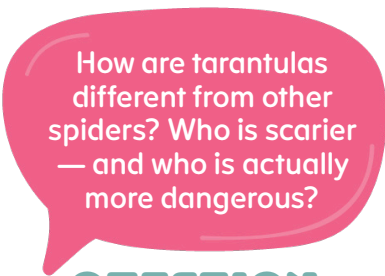


Tarantula Appreciation Day

Tarantulas may look scary, but they are calm, slow-moving spiders that rarely bite and prefer to avoid people.

They grow by molting — shedding their outer skeleton as they get bigger. After molting, they are soft and fragile for a short time.

Most tarantulas are harmless to humans and help control insect populations.



QUESTION





INTENSITY





Star Festival

Today Japan celebrates Tanabata — the Star Festival.

The tradition is inspired by two bright summer stars Vega and Altair that appear on opposite sides of the Milky Way. Vega is about 25 light-years away from Earth, and Altair is about 16 light-years away.

The Milky Way between them is our **galaxy** a vast system of billions of stars, gas, and dust.



How do we measure the distance to a star? Can we see the light of a star that no longer exists?

QUESTION





CONNECTION





Yo-Yo Day

Today we celebrate the yo-yo a simple toy that goes down... and comes back up.

But why doesn't it just fall and stay there?

A yo-yo works because of gravity, tension, and spin. When you throw it down, the string unwinds and the yo-yo spins at the bottom. The spinning motion stores energy, allowing it to climb back up the string.



Could a yo-yo work underwater, on a moving train, or on the Moon? Why or why not?

QUESTION





BLOOM





National Cartoonist Day

Cartoonists compress complex ideas into simple drawings.

With just a few lines, they can show something funny, surprising, or important.

Our brains understand pictures very quickly. When artists exaggerate faces or actions, it helps us notice what matters most.

Sometimes one cartoon can start a big conversation.



What do The Simpsons, Bluey and Magic School Bus have in common?

QUESTION





GROWTH



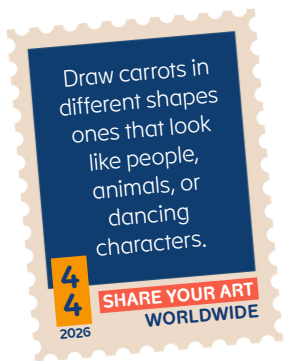


International Carrot Day

Today we celebrate the carrot a simple vegetable we eat almost every day.

Carrots contain **beta-carotene** — a natural pigment our body turns into **vitamin A**, which **supports healthy vision**.

Carrots were once purple, white, and yellow. Carrots also don't always grow straight. Sometimes they twist, split, and form funny shapes!



What would the world be like if everything grew the same shape and color?

QUESTION





MOVEMENT





World Wildlife Day

There are millions of species on Earth — insects, birds, fish, mammals. But why so many?

Wouldn't fewer be simpler?

Biodiversity means the variety of living things in an **ecosystem** (forest, pond, garden). When many species live together, they support each other —through food chains, pollination, and balance.



What might happen if BEES disappeared?
What if the WOLVES disappeared?

QUESTION





RETURN





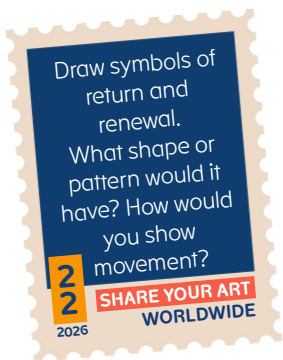
Imbolc & Groundhog Day

Long before modern calendars, people noticed that early February felt different.

In Celtic lands, this midpoint was called **Imbolc** a seasonal marker of change.

Farmers observed that sheep began giving milk again, a sign that spring was coming.

Later, in Europe and North America, people watched animals — like hedgehogs, badgers, or groundhogs — to “check” if winter would last.



How do people turn careful observations of nature into symbols — and sometimes into predictions?

QUESTION



JANUARY

1

1

BEGINNING

0



New Year & Hour of Peace

Invites people to pause at the beginning of the year.

Time does not have edges.

A year is part of a continuous orbit.

But attention can shift in a single moment.

An Hour of Peace is not a cosmic event — it is a decision to notice, to slow down, to assign meaning to a point in time.

Beginnings exist because we recognize them.

Peace begins in the pause.



Why do humans give so much importance to beginnings?

QUESTION

