



Step-by-Step Instructions:

In many winter traditions, light is a symbol of warmth, hope, and welcome.

Lanterns were placed in windows and homes to guide travelers, protect the household, and remind people that light always returns — even in the darkest season.

On this special day, we invite you to create your own Christmas paper lantern — a gentle, meaningful craft filled with quiet glow and care.

This is more than a decoration — it's a small beacon of light, story, and togetherness ✨💡



Characters in the Nativity Scene



The Star of Bethlehem

In the Christian story, this bright star is called the **Star of Bethlehem**. It represents **guidance and direction** — a sign that helps people find their way and reminds them to follow hope and kindness.









Angels

In Christianity, **angels** are messengers.

They bring important news and symbolize **peace, joy, and good will**.

Materials

-  Printed lantern template
-  Printed nativity scene file
-  Thick paper (the large sturdy paper sold at Dollarama or craft stores)
-  Scissors
-  Glue
-  LED tea light (battery-powered)

1–2) Preparing the Template

Print the lantern template and the nativity scene file.

Carefully cut out all parts marked in red on the template.

3–4) Building the Lantern Sides

Using one large sheet of thick paper, assemble the lantern with four sides:

- Cut window openings in three sides
- Leave one side solid, without an opening

5) Adding the Scene

Glue the printed nativity scene to the inside of the lantern, positioning it behind the cut-out windows so the image is visible through the openings.

6) Assembling the Lantern

Fold along the marked lines and glue the top sides together to form the lantern shape.

7–8) Light and Glow

Cut out the bottom part and fold along the crease lines.

Place an LED candle inside and carefully insert it

In this scene, they announce that something special has happened.

The Stable (Shelter)

The stable is a simple shelter where the family stays.

It shows an important idea in Christianity: **important things don't need to be fancy.**

Warmth, care, and love matter more than wealth.

Baby Jesus (Jesus Christ)

The baby is **Jesus**, also called **Christ**.

For Christians, he represents **love, hope, forgiveness, and new beginnings.**

Even for non-religious learners, he can be understood as a symbol of **light and kindness entering the world.**

Mary

Mary is Jesus's mother.

She represents **care, gentleness, courage, and trust** — the quiet strength of looking after someone small and vulnerable.

Joseph

Joseph is Mary's husband and Jesus's guardian.

He symbolizes **protection, responsibility, and support**, showing how caring for others is an important role.

The Shepherds

into the lantern.

✨ A Moment of Light

Turn on the candle and enjoy the soft glow.
Your Christmas lantern is ready — a quiet light for winter evenings, stories, and shared moments ✨

☀️ What This Scene Teaches

For Christians, this scene celebrates the **birth of Jesus**. For everyone, it tells a universal winter story about:

- light in dark times
- caring for one another
- kindness, generosity, and hope
- finding meaning in simple moments

The **shepherds** are people who take care of sheep.

In the Christian story, they are among the first visitors.

They represent **ordinary people**, kindness, humility, and being open to wonder.

🐪 The Wise Men (Magi / Three Kings)

The travelers are called the **Wise Men**, or **Magi**.

They come from far away, guided by the star, bringing gifts.

They symbolize **wisdom, learning, curiosity, and generosity across cultures**.

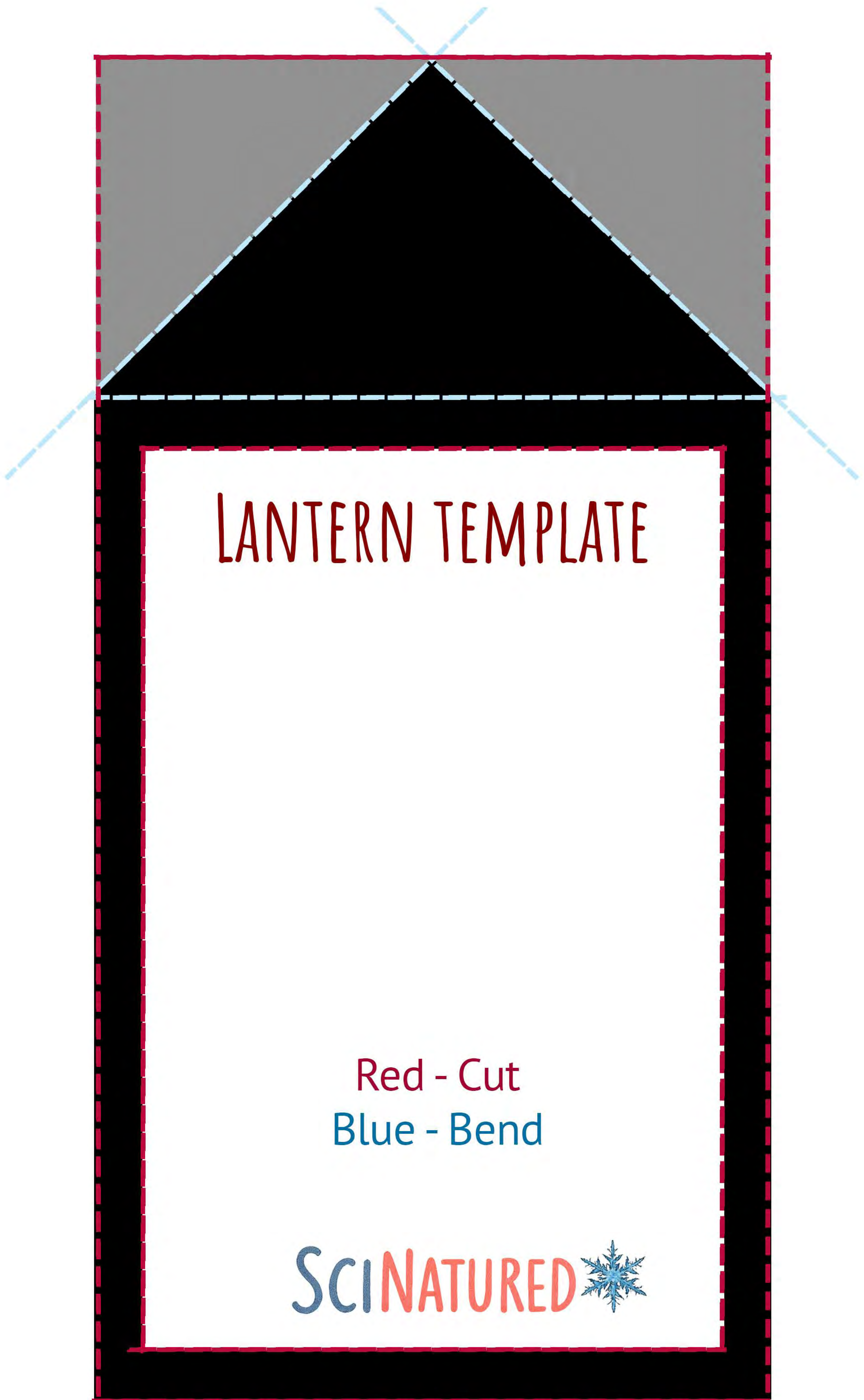
🐎🐑 The Animals

The animals share the space peacefully with people.

They represent **nature, calm, and harmony**, reminding us that humans and animals belong to the same world.



SCINATURED ❄️



LANTERN TEMPLATE

Red - Cut
Blue - Bend

SCINATURED ❄️

LANTERN - BOTTOM PART

