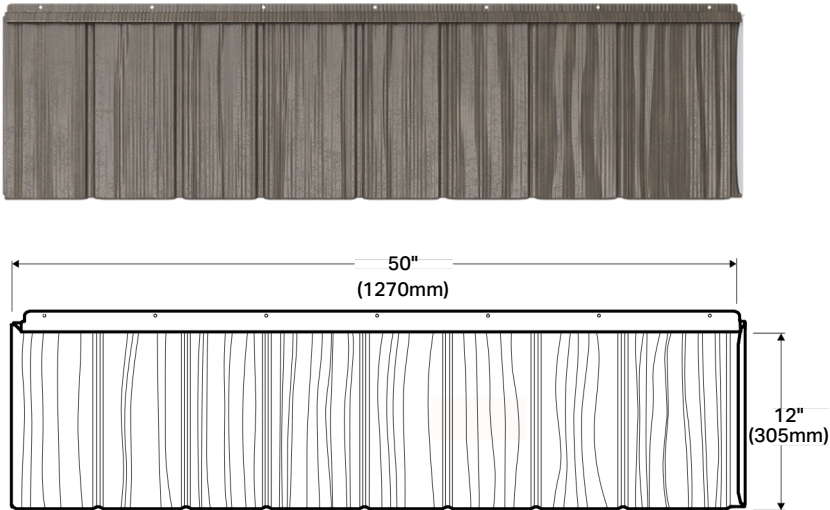
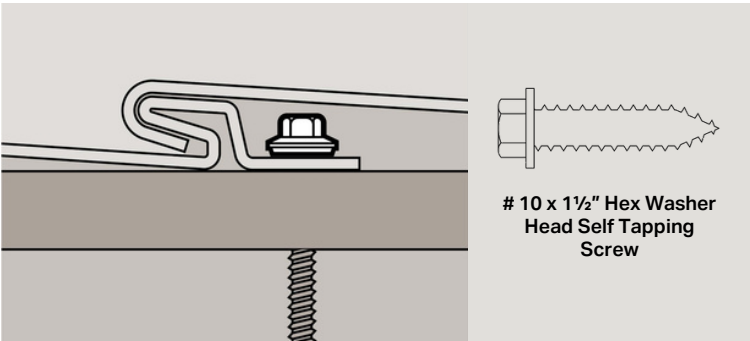


Shake 50"

Metal Roof Shingles



Hidden Fastening System



**Product Description**

True Nature's Cedar Creek Shake shingles provide all the aesthetic benefit of a shake roof without the degradation. Quadra-Loc technology securely locks the shingle on all four sides, ensuring exceptional water-tightness and nearly eliminating uplift caused by high winds and heavy rains. Additionally, the deep keyways channel water away from the roof effectively.

- Principal Characteristics**
- Certified to CCMC, Florida Building Code, and Texas Department of Insurance
  - Suitable for traditional or modern homes, new construction, or re-roof projects
  - Quick installation with pre-drilled fastening holes
  - Ridge caps have the same imprint for a seamless finish
  - The True Nature trim system is formed from the same steel coil as our shingles, ensuring a perfect color match

Dimensions	
Fastening System	Hidden fasteners
Application	Roof
Covered Width	50" (1270mm)
Profile Depth	0.5" (8.19mm)
Minimum Slope	3:12

Available Gauges	Weight LB/PC*
Gauge 26GA (Non Standard)	1.12
28GA	3.36

\*Weight - LB per piece may differ. Please contact your sales representative for further assistance.

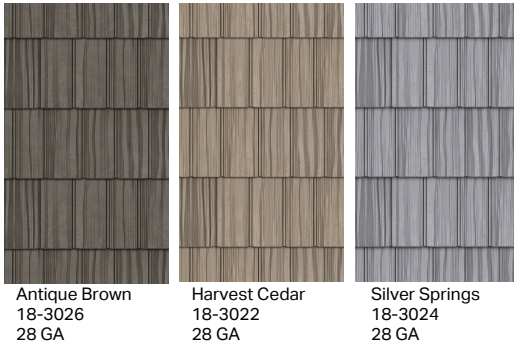
Packaging Details	
Package Size	15'11" x 3'14" (4.85m x 1.27m)
Unit of Product per Package	12 Shakes

Lead Time	
Standard Regional	1 week
Non-Standard	Upon customer request

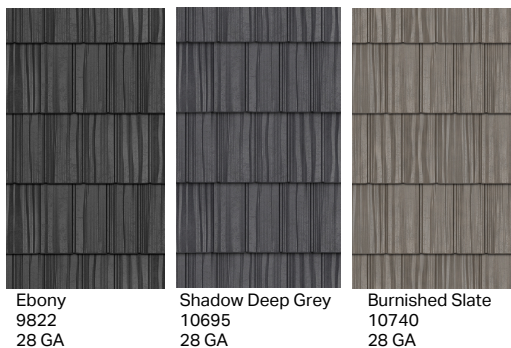
### Shake 50"

### Metal Roof Shingles

#### Expressence – Architectural Print Series



#### Signature Matte – SMP Coated Metal



#### Colour Availability



Please scan the QR code or [click here](#) to confirm colour availability for Cedar Creek Shake by region.

#### Warranty

[True Nature](#)  
[Weather XL](#)  
[Expressence](#)



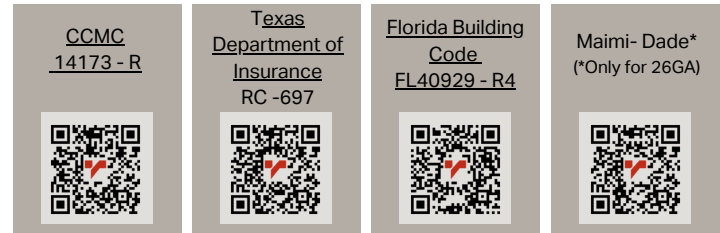
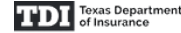
#### Engineering & Environmental Documents

[CSSBI EPD](#)  
[XCarb EPD](#)

#### Approved Substrates / Design Information

This product is designed for exclusive use on plywood with a minimum thickness of 0.5 inches or OSB board with a minimum thickness of 0.625 inches. For detailed, project-specific information, please contact your sales representative.

#### Certifications



#### Testing Data

Fire Resistance (Canada)		
Test Type	Test Standard	Result
FIRE: Non-Combustibility	ULC S135	Pass
FIRE: External Fire Exposure	ULC S107	Pass

CCMC (Canada) - for 28 GA, PVDF finish		
Test Type	Test Standard	Result
Wind Uplift	TG section 8.1.1.4	Pass
Dynamic Pressure Water Infiltration	AAMA 501.1	Pass
Salt Spray	ASTM B117	Pass
Accelerated Weathering	ASTM G155	Pass
Impact Resistance	TG Section 8.1.2.1	Pass
Traffic Load	ASTM E661	Pass
Material Specification	ASTM A792	Pass
Material Abrasion	ASTM D968	Pass
Material - Coating Quality	TG Table 8.1.1.7	Pass
Material - Dry Firm Hardness	ASTM D3363	Pass
Material Flexibility	ASTM D522	Pass
Material - Total dry film Thickness	ASTM D7091	Pass
Material - Total Thickness	TG Table 8.1.1.7	Pass

TAS, ASTM (United States) - For 28 GA		
Test Type	Test Standard	Result
Wind Driven Rain	TAS 100	Pass
Fire	ASTM E108	Pass
Salt Spray	ASTM B117	Pass
Accelerated Weathering	ASTM G155	Pass
Material Properties	ASTM A792	Pass

Wind Uplift Test		
Test Standard	Gauge and Finish	Result
(non-HVHZ) - UL 897, UL 580	28 & 26 GA	Pass
(HVHZ) - TAS 125	26 GA	Pass

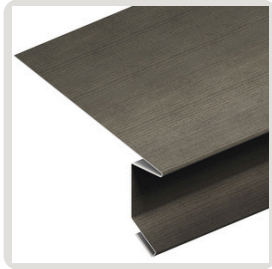


Shake 50"

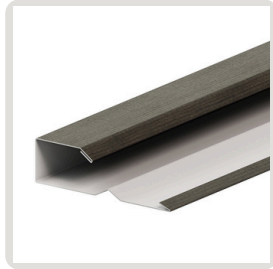
Metal Roof Shingles

## Matching Trim System

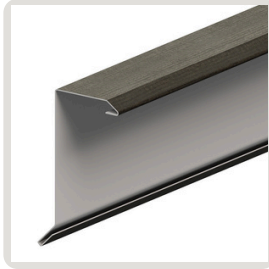
Shown in Antique Brown



Eave  
TN-01



Inner Gable  
TN-02



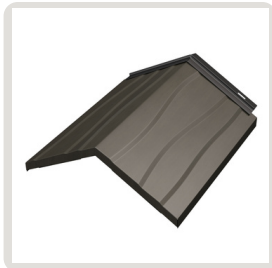
Outer Gable  
TN-03



Transition  
TN-04



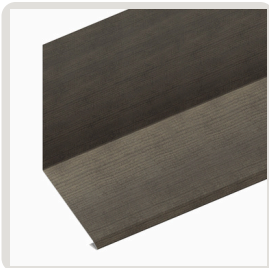
Valley  
TN-05



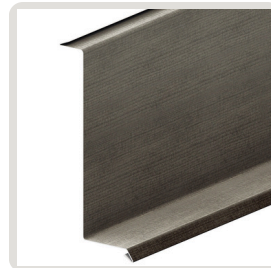
Ridge / Hip Cap  
SHAKECAP/  
SLATECAP



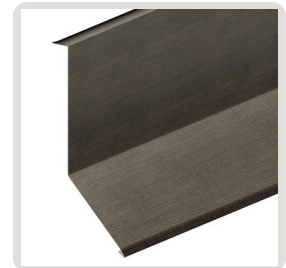
Side Wall  
TN-13



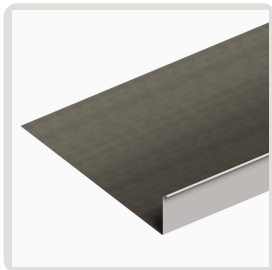
End Wall  
TN-08



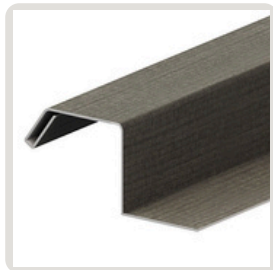
Side Wall Masonry  
TN-14



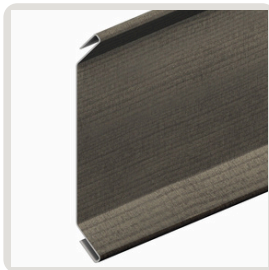
End Wall Masonry  
TN-12



High End Chimney  
TN-10



Z-Flashing  
TN-06



Reglet  
TN-09

Cedar Creek Shake, Shadow Deep Grey



Cedar Creek Shake, Antique Brown



Vicwest Inc. reserves the right to amend product specifications without prior notice. Product specification, thicknesses and colours shown in this document should not be taken as being available in all regions, and reference should be made to Vicwest's colour chart, or advice should be sought from Vicwest's Customer Service Department. Recommendations for the uses described herein should be verified for suitability and compliance with actual requirements of any local building codes, applicable laws and regulations.

Colours shown in this document are representative only. Final colour selection should be made from actual colour samples which are available through our Sample Store. To ensure you are viewing the most recent and accurate product information, please scan the QR code or [click here](#).

vicwest-true-nature-shake-data-sheet-en-ca-us  
MKG-DS-EN-V1

[vicwest.com](http://vicwest.com)

VWTNCCS3ENS