



REFLEX

Reflex Overview

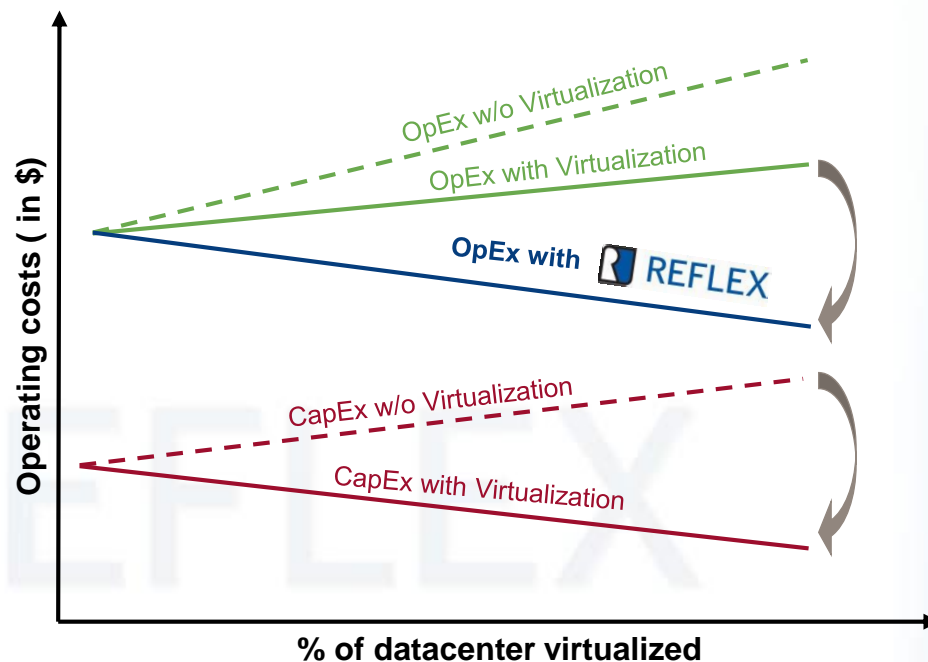
October 4, 2010

Reflex Virtual Infrastructure Management Benefits



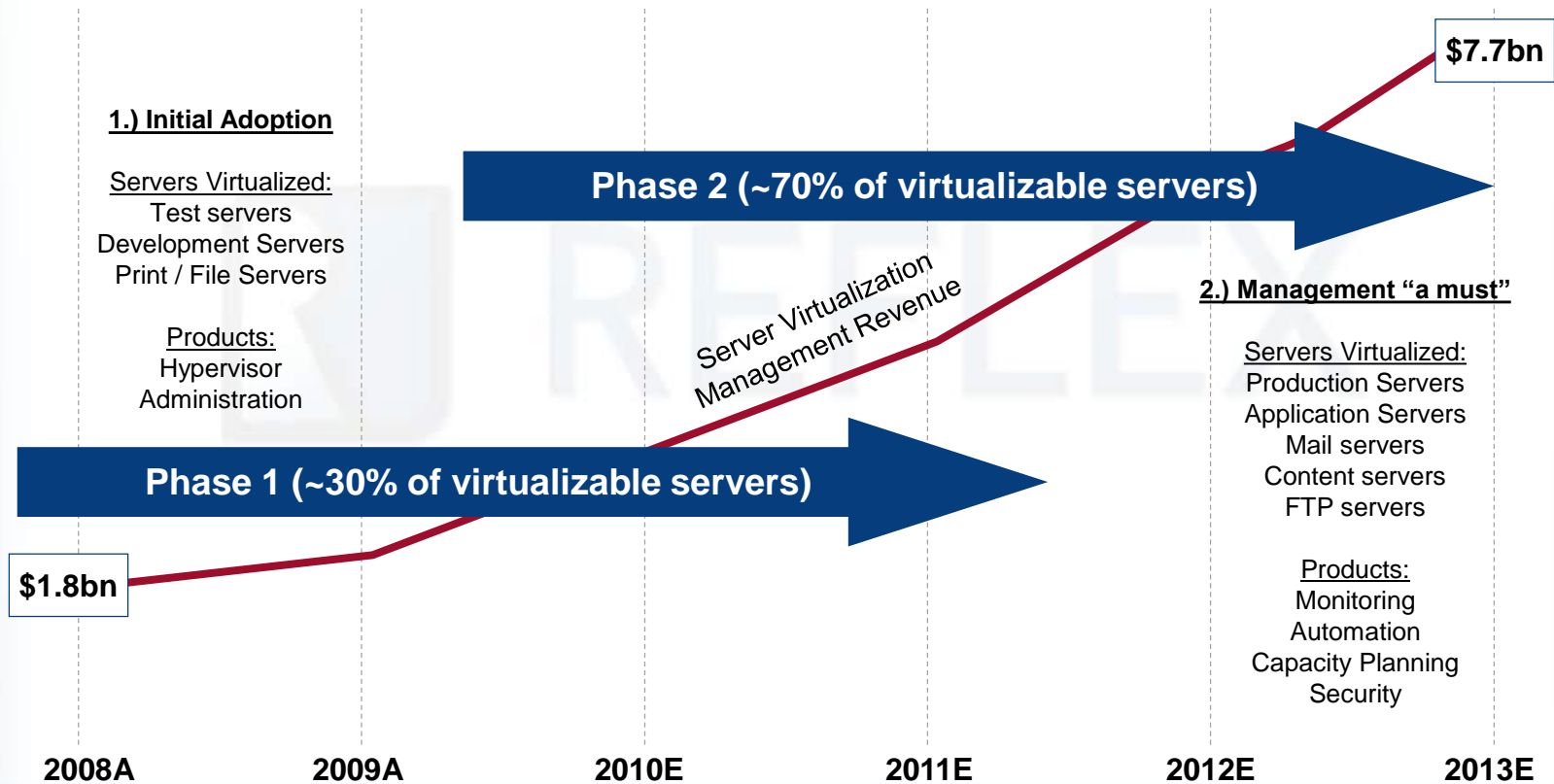
Organizations benefit from reduced costs and increased efficiency through policy automation

- With VMC and its related applications, enterprises can automate the management of critical policies both within their own data centers and also seamlessly extend those policies into cloud computing environments
- The adoption of virtual machines in enterprise environments as well as in public and private clouds can be accelerated
- Reflex minimizes FTE per server costs from industry average of 1 FTE per 20 physical servers to 1 FTE per 500 virtual servers



Since the largest line item on a typical IT budget is people, use of Reflex technology results in significantly more savings than from server consolidation alone.

- Witnessing migration from Phase I to Phase II as increased virtualization adoption leads to enhanced virtualization management needs
- During Phase I, vendors solved client problems with virtualization adoption, Phase II addresses the problems associated with managing the newly adopted virtualized environments
- As end users are moving more towards Phase II, vendors with more comprehensive product offering will be set at an advantage
- According to The 451 Group, among the most requested management tools and those with highest revenue growth will be monitoring, automation and security

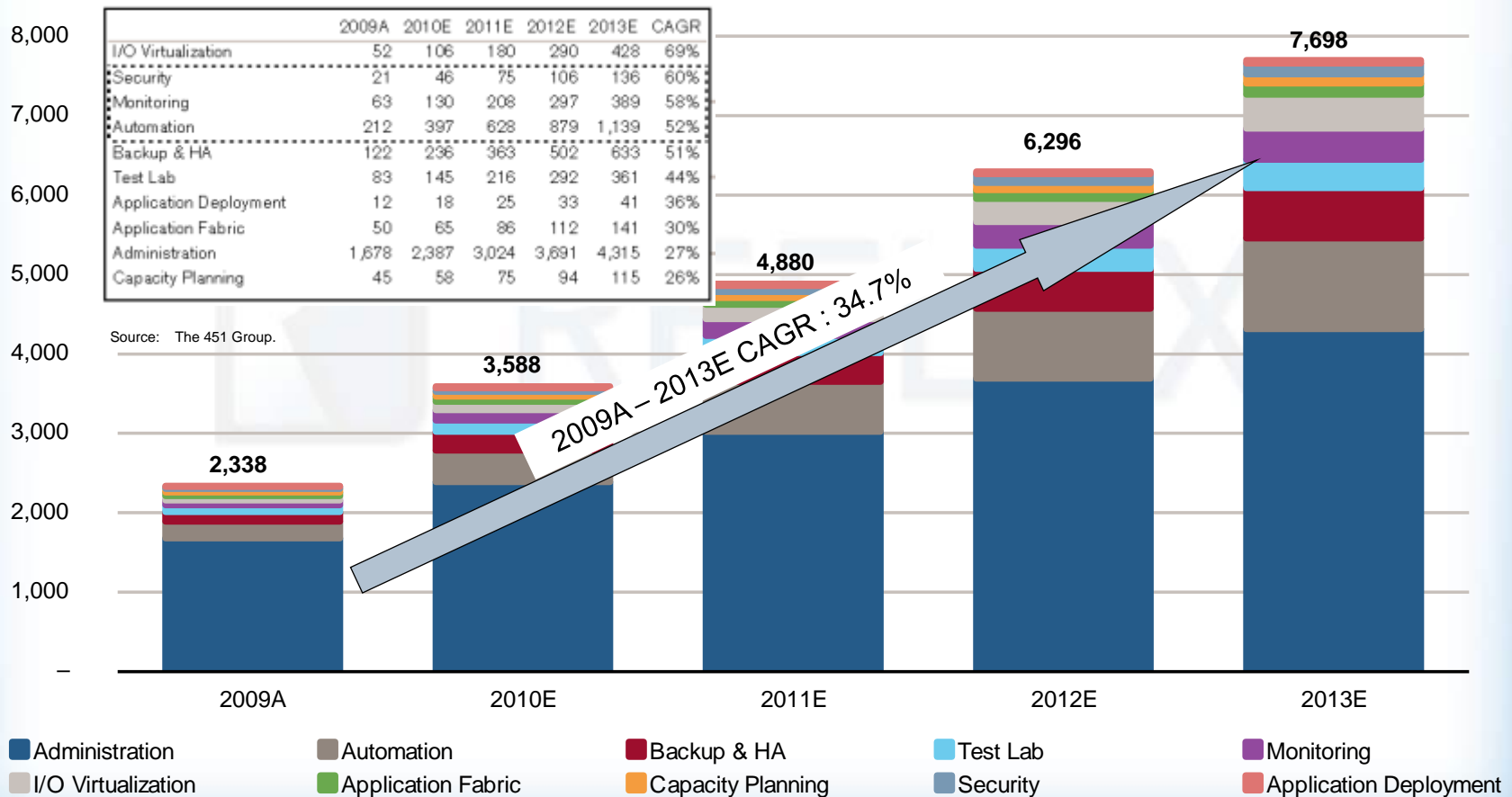


Source: The 451 Group.

Server Virtualization Management Market

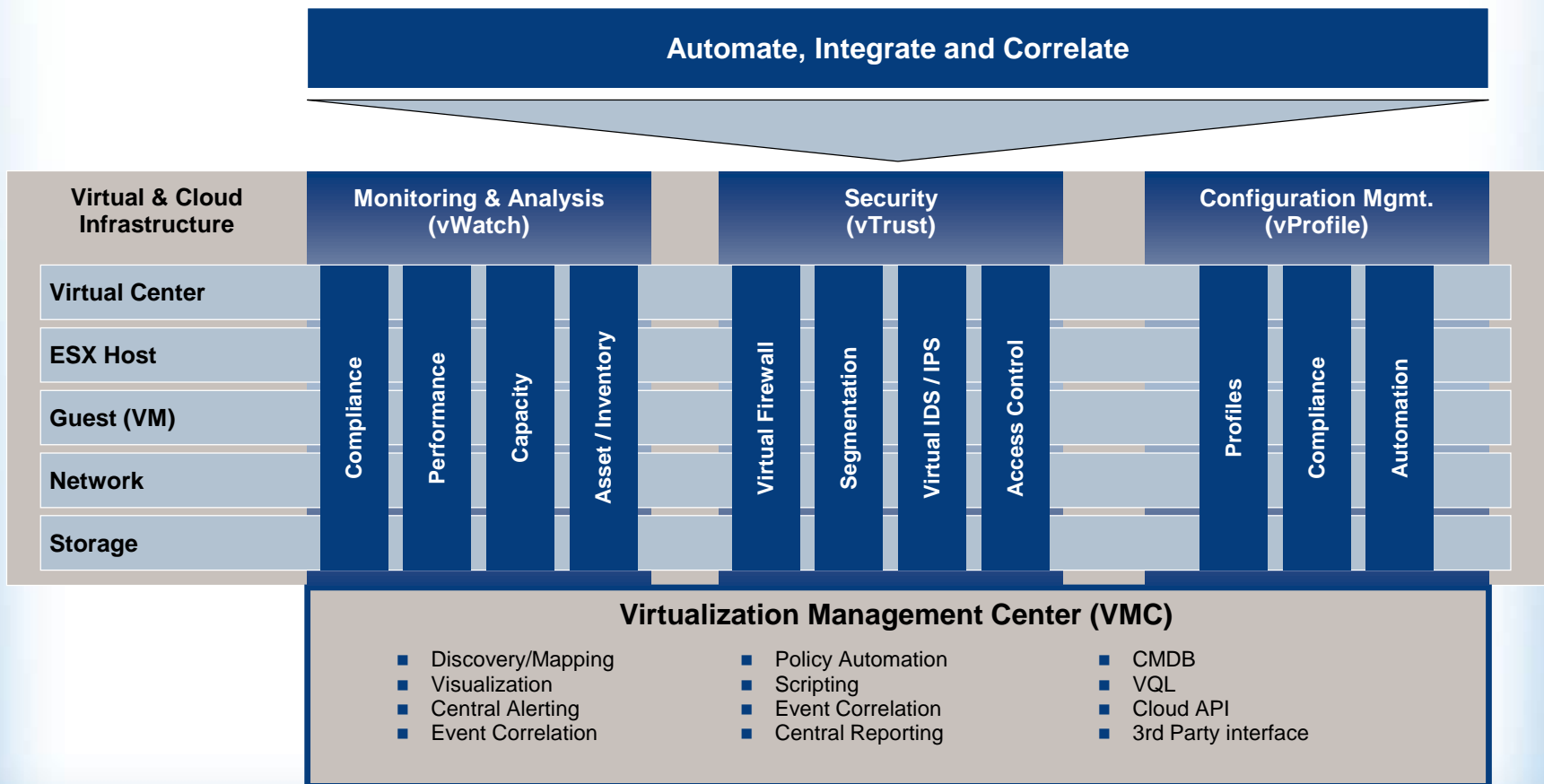


- Virtualization Management is the largest component of revenue in the broader Virtualization Market (valued \$4.3bn in 2010)
 - Accounts for 83% of total revenues in 2010; will increase as virtualization management plays an increasingly dominant role vs. virtualization infrastructure (hypervisor)
- Within the virtualization management market, **Security, Monitoring and Automation** are among the fastest growing sub-segments
 - 2009–2013 CAGRs of 60%, 58% and 52% respectively.
 - Comprise key functionality for the measurement, monitoring, automation and security of workflow within virtualized environments



Source: The 451 Group.

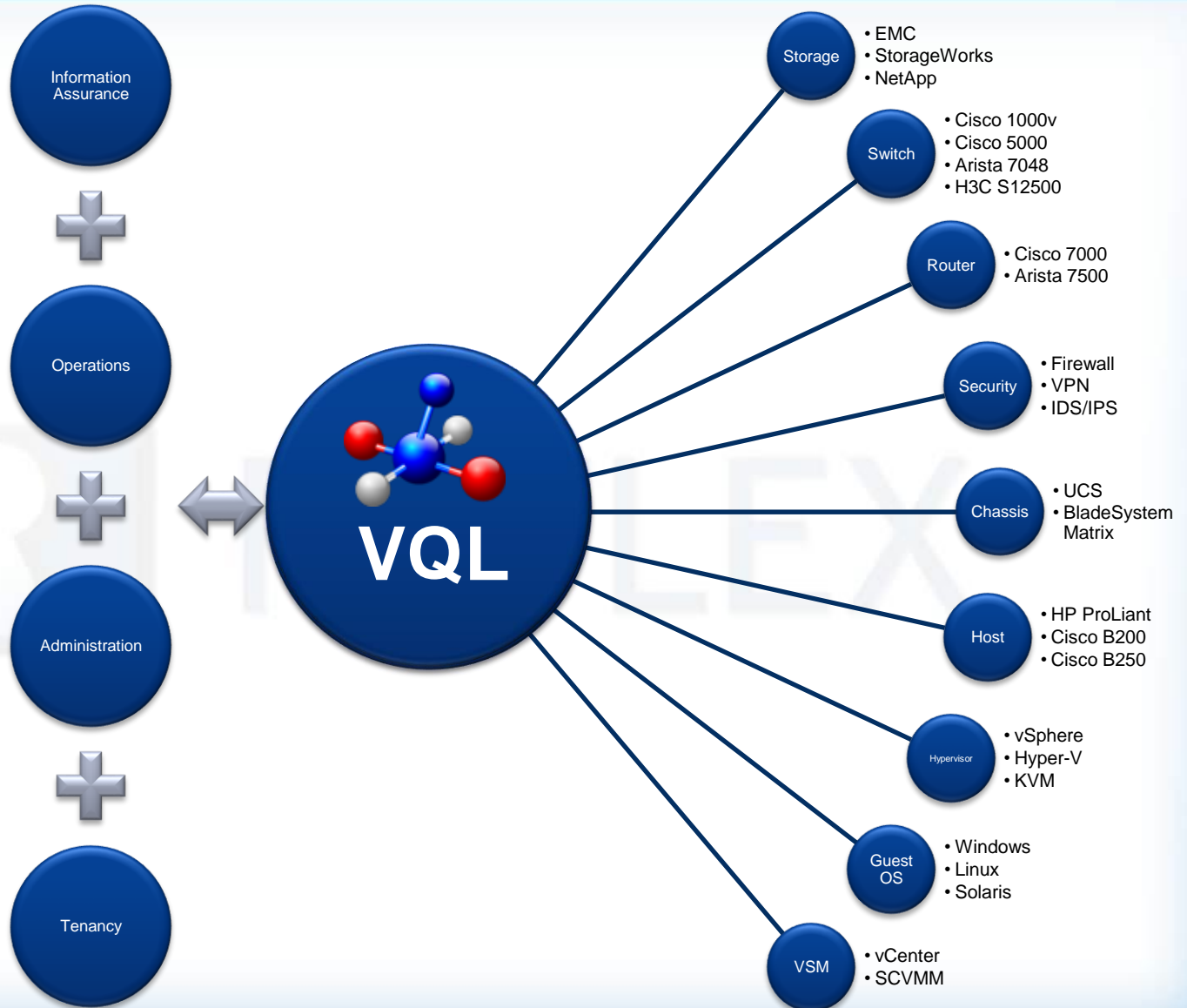
- Reflex's Virtualization platform provides a comprehensive management and automated policy automation platform for managing virtual , private cloud, or public cloud infrastructures
- Provides horizontal (across management disciplines) and vertical (across the virtual "stack") integration and policy enforcement
- Enables security, configuration management, monitoring, compliance, and policy automation through a single pane of glass



- Designed to provide customers with the essential management capabilities needed to effectively:
 - manage and secure the complex, dynamic virtual environment
 - capitalize on the existing virtualization investment
 - reduce cost through efficient management
 - minimize downtime
 - maintain a reliable virtualized infrastructure running critical business applications



Reflex is innovative in its approach to integrating security, compliance and management of the virtual environment by providing visibility, correlation, and control through a single pane of glass



- Fully integrated component of the Reflex VMC platform
- Monitoring and analysis module which provides a comprehensive overview of the state of the virtual environment at any given time
- Through real-time and historical visual reporting, configuration change monitoring, and extensive correlation, vWatch provides administrators with the visibility they need
- The ability to visualize both the virtual and underlying hardware infrastructure has become mission critical for IT administrators

Functionalities:

Virtual Flow Data

Historical tracking

Physical-to-Virtual

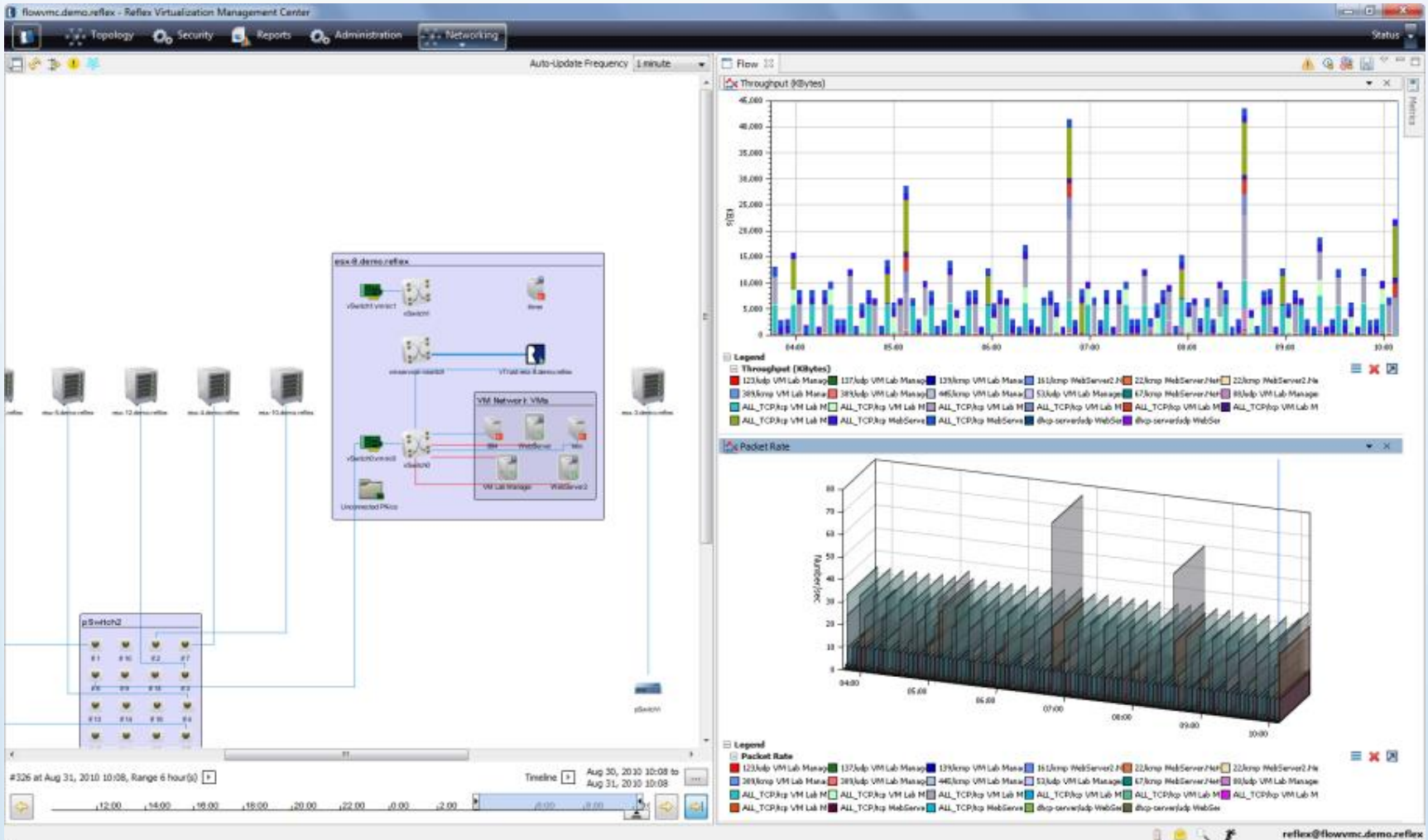
Configuration

Compliance

Root-cause Analysis



vWatch is a lean, agentless solution, making it fast to deploy and simple to integrate into any data center environment



Prior to the introduction of vTrust, virtualization administrators did not have at their disposal a unified tool by which to properly segment their virtual environment.

- Fully integrated component of the Reflex VMC platform
 - Designed to be integrated directly with the VMWare VMsafe platform technology
- Provides dynamic policy enforcement for virtual environments deployed locally and in external cloud environments
- Operating at the hypervisor kernel level, vTrust leverages the tightly integrated VMsafe component of VMware vSphere™ 4
- Facilitates adaptive, extensible policies that allow administrators to address complex business, information security and compliance requirements within the virtual environment

Functionalities:

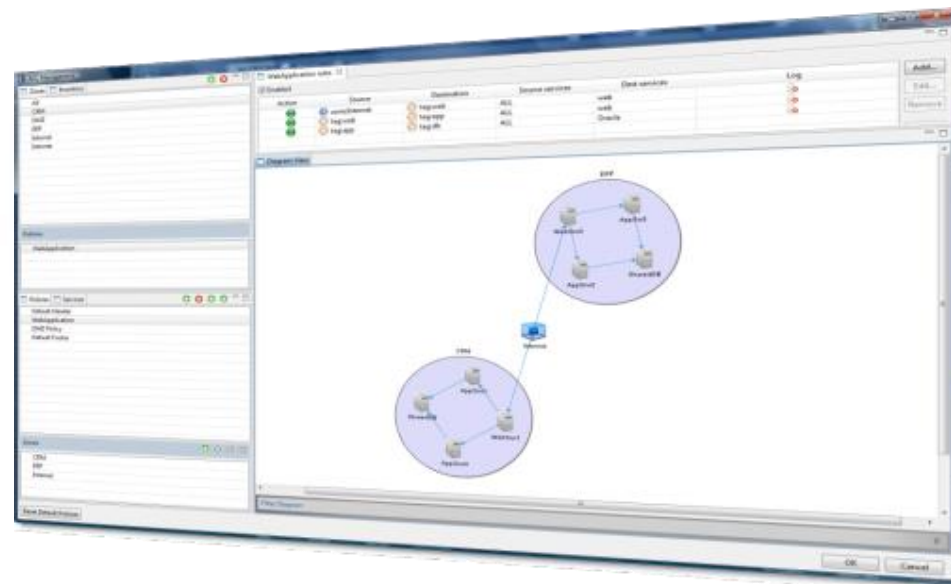
Dynamic Policy Enforcement and Management

Policy Extends into the Cloud

Virtual Segmentation

Virtual Quarantine

Virtual Networking Policies



Prior to the introduction of vTrust, virtualization administrators did not have at their disposal a unified tool by which to properly segment their virtual environment.

- vProfile provides an API that enables service providers and enterprises to provision and manage security and compliance without the dependency on expensive external hardware
- vProfile configuration management is the only solution on the market today that provides 'difference visualization', and plots VM configuration changes according to a graphical, easy to understand "heatmap" interface

Functionalities:

Apply Baseline Profile Configuration

Heatmap and Customized Pivot Tables

Ad-Hoc and Scheduled Remediation

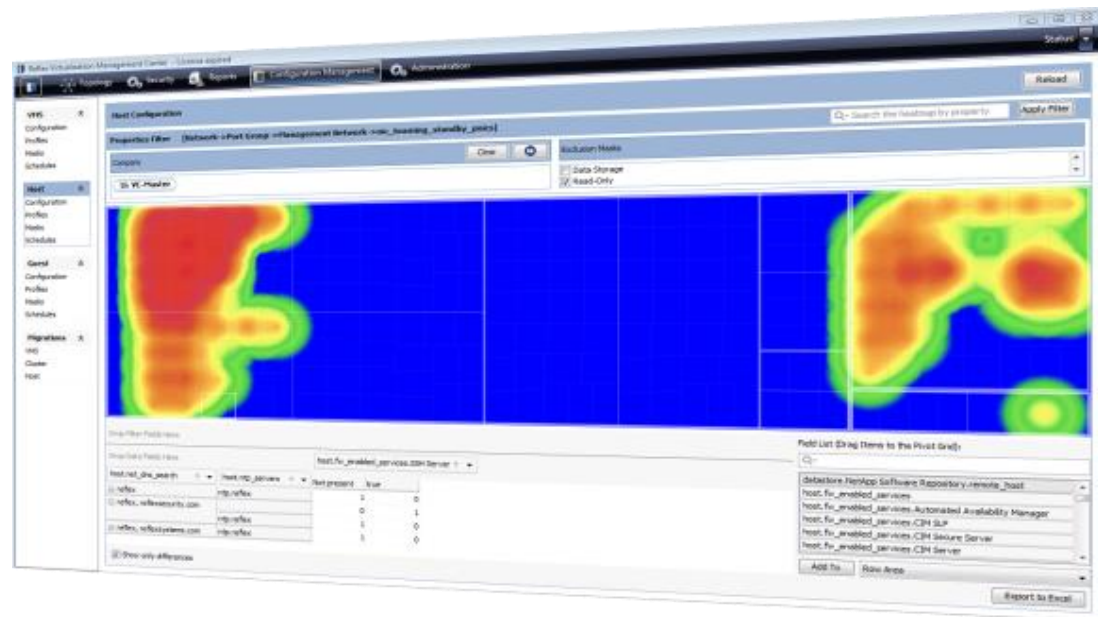
VQL Configuration Queries

Tiered Configuration Profiles

Historical Profile Definition

Batch Modification

IP Pool Allocation



Provides customers with the ability to combine management and security functionality, and manage all tasks through a single pane of glass.

Expanded Configuration Management



The screenshot displays the REFLEX Virtualization Management Center interface. The main window is titled "confvmc.demo.reflex - Reflex Virtualization Management Center". The interface is divided into several sections:

- Left Sidebar:** Contains navigation menus for VMS, Host, Guest, Network, Chassis, and Migrations, each with sub-options for Configuration, Profiles, Masks, Schedules, and Defaults.
- Network Profiles:** A list of profiles including Arista7148S, Nexus1000V (highlighted), Nexus7030, and Nexus5010. Below this is a section for VQL Bindings and All Switches.
- Profile Properties (Nexus1000V):** A detailed view of the selected profile's configuration, organized into expandable sections:

Type	Delta
Authentication Manager	
Auth Manager	
Datacenter TACACS+ Group	
Authentication Manager Error Reporting Enabled	<input checked="" type="checkbox"/>
Authentication Manager HS-CHAP Enabled	<input checked="" type="checkbox"/>
Authentication Manager Name	Auth Manager
Authentication Manager TACACS+ Enabled	<input checked="" type="checkbox"/>
Authentication Manager TACACS+ Shared Key	86573r==
Authentication Manager TACACS+ Shared Key Type	encrypted
License	
Nexus License	
Port Profile	
Uplink Port Profile	***
User Port Profile	***
Profile Properties	
BPDU Filtering Enabled	<input checked="" type="checkbox"/>
BPDU Guard Enabled	<input checked="" type="checkbox"/>
Loop Guard Enabled	<input checked="" type="checkbox"/>
Primary Switch Manager IP	172.16.9.131
Rapid PVST+ Enabled	<input checked="" type="checkbox"/>
Secondary Switch Manager IP	172.16.9.132
Switch Max Ports	512
Switch Name	n3lv
Switch SMTP From Address	nk1v-reporting@reflexsystems.com
Switch SMTP Port	25
Switch SMTP Reply To Address	net-admin@reflexsystems.com
Switch SMTP Server	172.16.8.1
VLAN	
Hardware Group VLAN	
Human Resources VLAN	
BPDU Filtering Enabled	<input checked="" type="checkbox"/>
BPDU Guard Enabled	<input checked="" type="checkbox"/>
IGMP Snooping Enabled	<input checked="" type="checkbox"/>
IGMP Snooping Explicit Tracking	<input checked="" type="checkbox"/>
IGMP Snooping Fast Leave	<input checked="" type="checkbox"/>
IGMP Snooping Last Member Query Interval Seconds	15
IGMP Snooping Report Suppression Enabled	<input checked="" type="checkbox"/>
Loop Guard Enabled	<input checked="" type="checkbox"/>
Rapid PVST+ Enabled	<input checked="" type="checkbox"/>
Traffic Control Enabled	<input checked="" type="checkbox"/>
Traffic Control Threshold Percentage	70
VLAN Descriptive Name	Human Resources VLAN
VLAN ID	300
VLAN Operational Mode	enabled

The bottom right corner of the interface shows the user email address: reflex@confvmc.demo.reflex.

Competitive Landscape



	Monitoring	Capacity Planning	Security & Configuration Compliance	Security (segmentation, FW, IDP, Access control)	Host, Network, and VM Configuration Management	Single, cross-domain Management Database	Cross-Domain Management Language	Web Services API for Cloud Portal Integration	At least 100 Customers with more than 10 six figure deals
REFLEX	●	●	●	●	●	●	●	●	●
VMware vShield	○	○	◐	◐	○	○	○	●	●
CISCO / VSG	○	○	○	◐	○	○	○	?	○
IBM / VSSD	○	○	○	◐	○	○	○	○	●
Btera	○	●	○	○	○	○	○	●	?
ALTOR Virtualize Securely™	○	○	◐	◐	◐	○	○	●	○
HyTrust Trusted Security for Virtual Infrastructure	○	○	◐	◐	◐	○	○	○	○
VEEAM	●	◐	○	○	◐	○	○	○	●
ManageIQ™	●	◐	◐	○	◐	○	○	●	●
QUEST SOFTWARE	●	◐	◐	○	◐	○	○	○	●

- The competitive advantage which Reflex provides has been validated by blue chip customers including premier government entities, academic institutions, and corporations.

Government, Education, & Healthcare



DEFENSE INTELLIGENCE AGENCY
COMMITTED TO EXCELLENCE IN DEFENSE OF THE NATION



GEORGIA DEPARTMENT OF LABOR



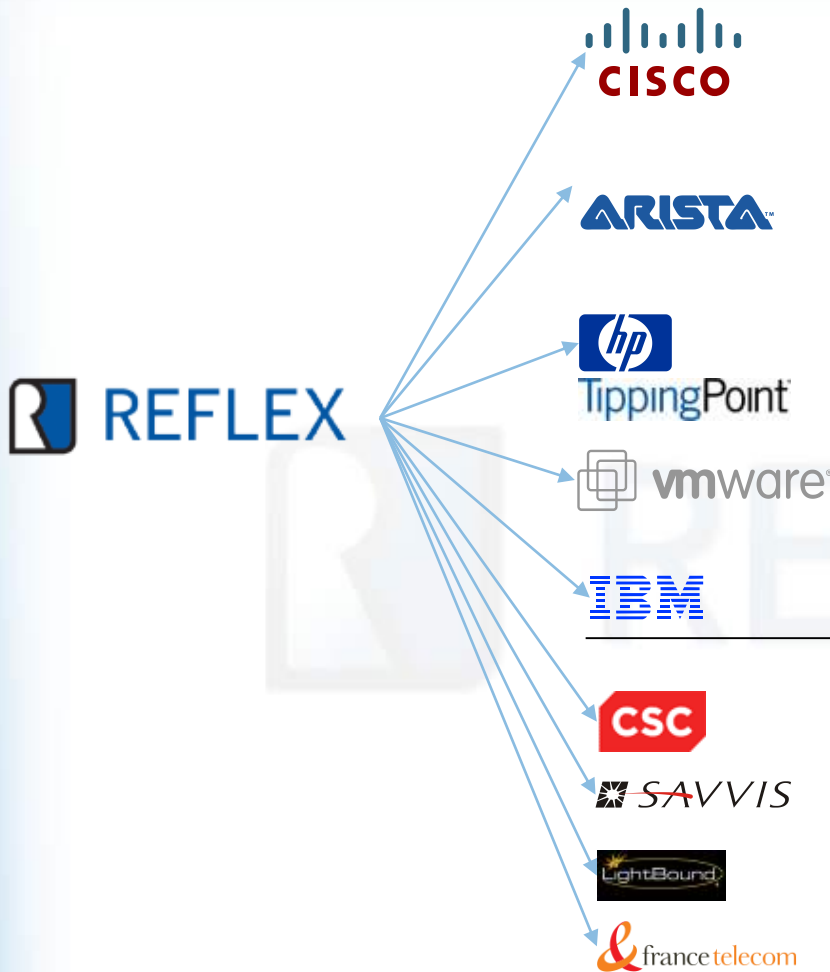
The University of Georgia

Financial Services



Industry





INFRASTRUCTURE PROVIDERS:

Cisco Advanced Services

- Cloud services offering leverages Reflex technology (Cloud Reference Architecture)
- Cisco and Reflex also provide a solution that combines Cisco Nexus 1000V Series Switches and Reflex VMC to address the challenges of securing and managing the next generation of virtualized data centers
- UCS management

Arista VM Tracer & Reflex VMC

- Integration with physical networking infrastructure to manage configuration and compliance
- Holistic management and integration of networks with VMs
- API-based integration for switch configuration management

TippingPoint vController - OEM and reseller of Reflex vTrust

- Provides redirection of VM traffic to physical IPS device
- License key adds Reflex feature set
- Existing Reflex can upgrade and add vController
- Future Plans to provide virtual IPS

vmware

- Technology Alliance Partner and a certified VMsafe vendor.
- Reflex code runs side-by-side with VMware's code in the kernel of the hypervisor. Reflex is also one of a limited number of 3rd party vendors with access to VMware's community source code.

- In progress for integration into the Tivoli Service Request Manager

SERVICE (CLOUD) PROVIDERS:

- Providing key infrastructure components of CSC "Trusted Cloud" Initiative
- Federal reseller and systems integrator

- Project Spirit: providing key infrastructure components of Savvis Symphony, Savvis's next generation secure public cloud offering

- Service (Cloud) Provider

- Service (Cloud) Provider

Ability to access and leverage other virtual infrastructure market participants contributes to the Company's unique positioning

- Over 80 new opportunities representing nearly \$5M in pipeline for Q4 2010

