



# **SOUTHWEST RANCH & FARM SALES PRESENTS**



**230 +/- Acre Claude Ranch**

**\$3,250 per acre**

**Oklahoma Hunting Ranch**

Information in this brochure is from sources deemed reliable, but no warranty or representation is made as to the accuracy by the seller or its agents. The seller and its agents expressly disclaim any liability for errors, omissions or changes regarding any information provided for this sale.

# Property Description

**Acres:** 230 +/- Acres.

**Price:** \$3,250 per acre.

**Terms:** No owner financing.

**Location:** Velma, OK, Stephens County. County Road access.

**Comments:** Beautiful mix of grass, timber and 30 acres of tillable land. Water well and electric accessible.

**Improvements:** Hay barn.

**Water:** 9 acre flood control lake and pond.

**Terrain:** Rolling hills with many creeks.

**Fences:** Good barbed wire fences with interior fence that divides the property.

**Grasses:** Bermuda, Bluestem, and Native grasses.

**Game:** Excellent hunting for Whitetail deer, wild turkey, wild hogs, and predators.

When buying property, offered by Southwest Ranch & Farm Sales, the buyer's agent, if applicable, must be identified on first contact and must be present at initial showing of the property in order to participate in real estate commission. If this condition is not met, fee participation, if any, will be at sole discretion of Southwest Ranch & Farm Sales.

**For more information on this Oklahoma Hunting Land please call Scott Johnston at (405) 249-8241.**



### TEMPERATURE

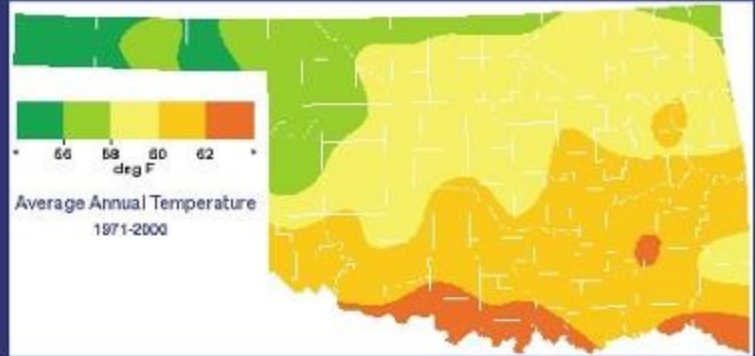
Average Annual: 63 degrees  
Average Maximum: 75 degrees  
Average Minimum: 50 degrees  
Highest: 114 degrees  
(Marlow, August 11, 1936)  
Lowest: -14 degrees  
(Marlow, January 4, 1947)  
Days of 90 Degrees or Higher: 92  
Days of 20 Degrees or Lower: 15

### PRECIPITATION

Average Annual: 35.59 inches  
Days With Precipitation: 68  
Wettest Year: 59.69 inches in 1908  
Driest Year: 16.31 inches in 1939  
Greatest Daily Rainfall: 9.85 inches  
(Duncan, May 19, 1955)

### OTHER FACTS

Average Wind Speed: 10 mph  
Sunshine: 55- 80%  
Average Humidity: 67%  
Thunderstorm Days: 51  
Hail Events: 5 per year  
Tornadoes (1950-2003): 51



### WINTER WEATHER

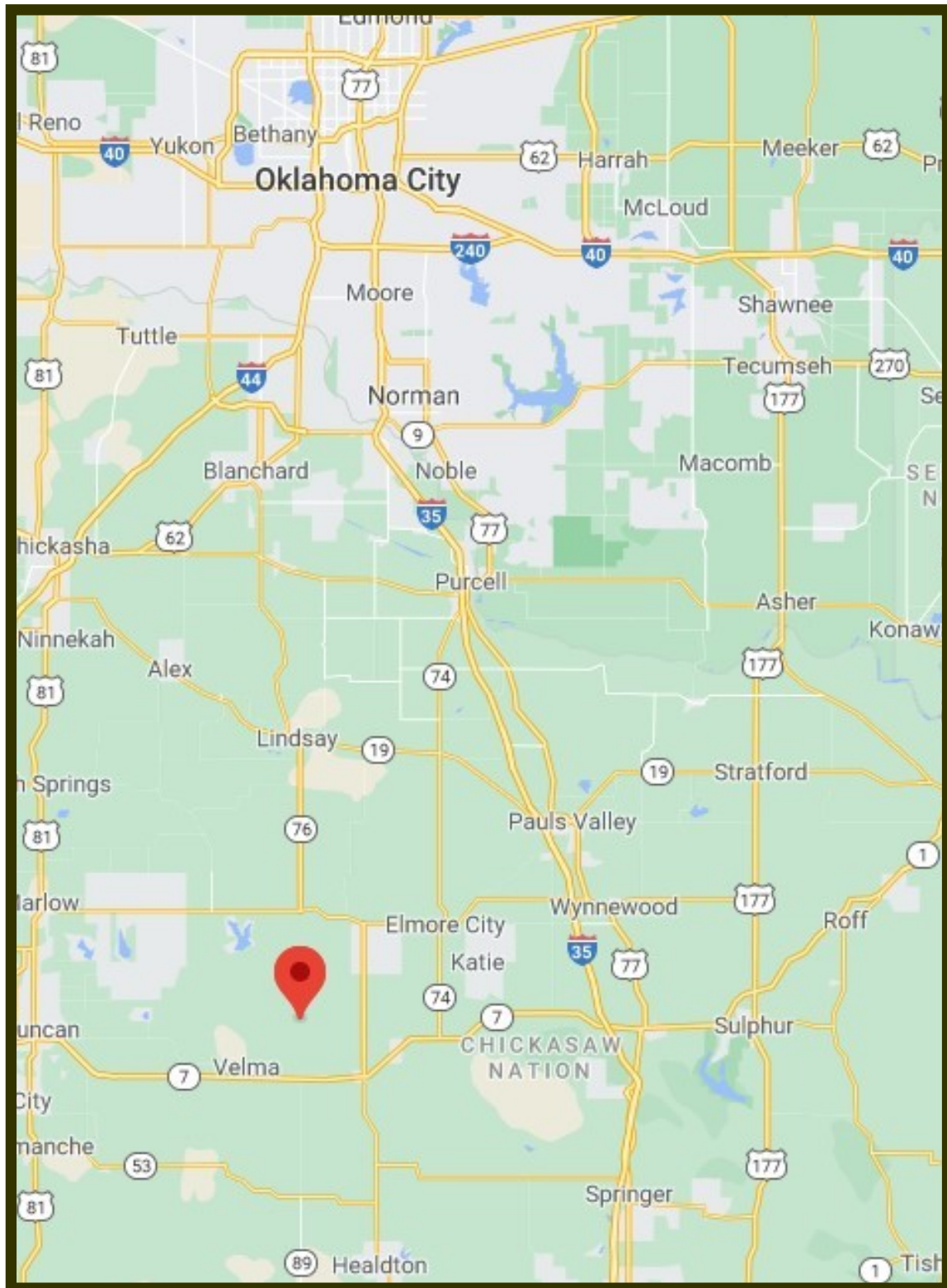
Average Annual Snowfall: 4.4 inches  
Days with snow on ground: 3  
Greatest Seasonal Snowfall: 29.1 inches (1967-1968)  
Greatest Daily Snowfall: 12.0 inches  
(Comanche, January 9, 1977)  
Last Freeze in Spring: April 1  
First Freeze in Autumn: November 4  
Growing Season: 218 Days



# Stephens County Climate Summary



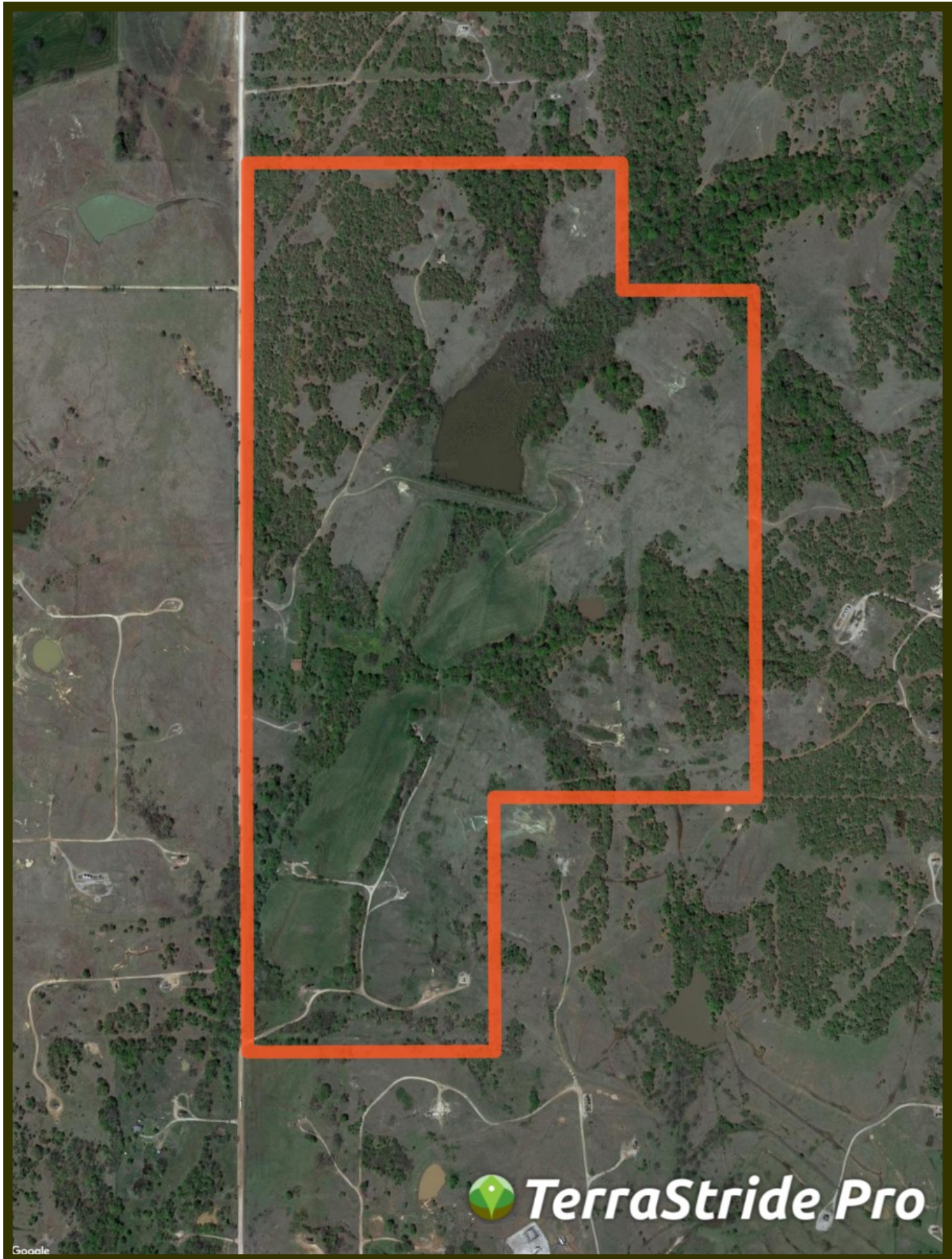
# 230 +/- Acre Claude Ranch Location Map



34.5107, -97.6157

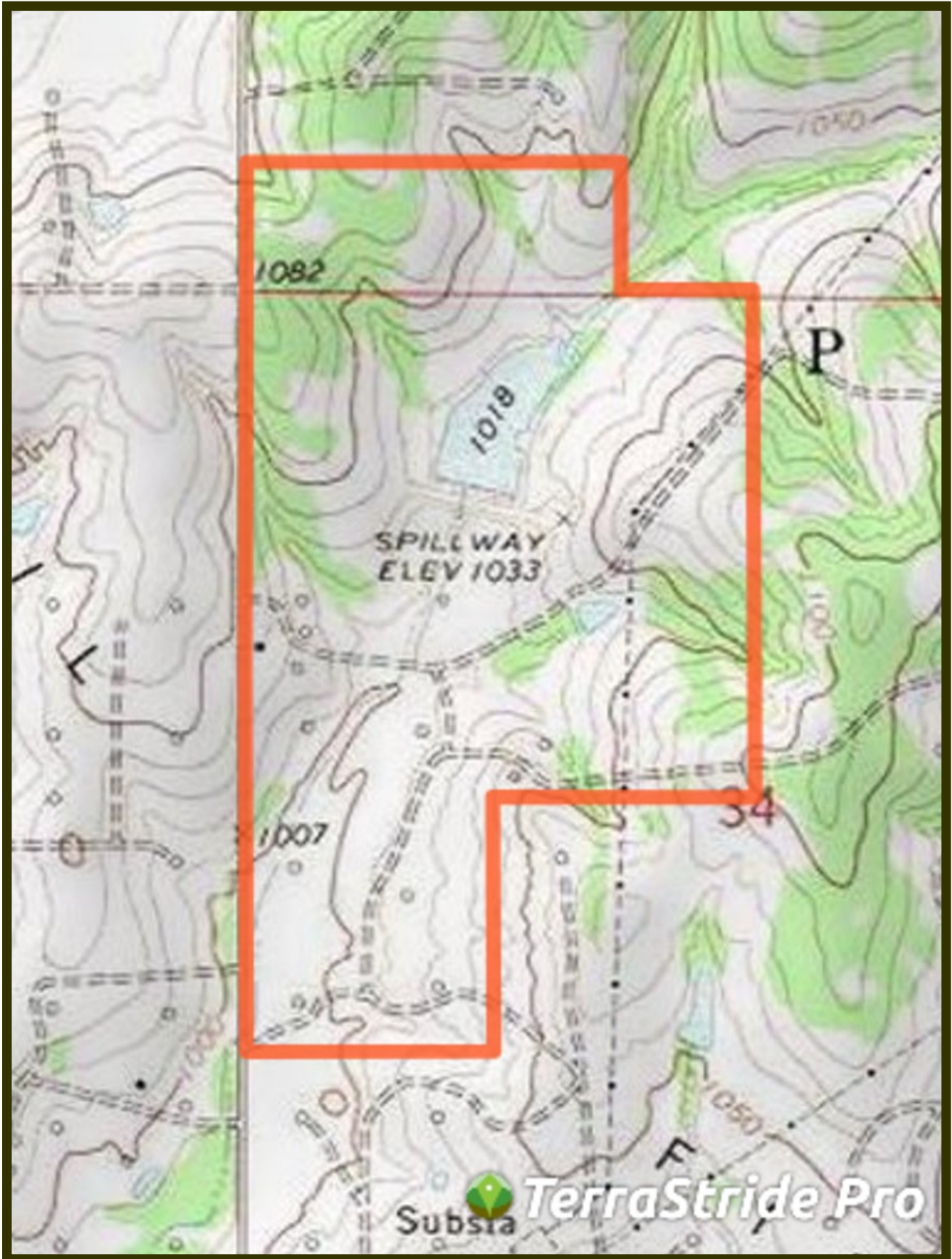


# 230 +/- Acre Claude Ranch Aerial Map





# 230 +/- Acre Claude Ranch Topo Map













# *Ranch and Farm Sales with a Difference*

**Southwest Ranch & Farm Sales; Your Experts in Ranch Real Estate**



**Jim Long** grew up in Mt. Vernon, Texas and has lived in East Texas all his life. After graduating from The University of Texas in Austin, he and his wife, Sara, moved to McKinney and have lived there ever since.

Jim began selling real estate in 2000 and received his Texas broker license in 2004 and his Oklahoma broker's license in 2005. He grew up in a family that raised cattle and continues to raise cattle himself.

The dynamics of land have changed drastically in the last 10 years, especially the value. Staying abreast of the market is crucial in our business and we make every effort to be the most knowledgeable company out there.

Jim Long is a licensed Real Estate Broker with the **Oklahoma Real Estate Commission** and **Texas Real Estate Commission**.



**Scott Johnston** is a native of Oklahoma where he has lived his entire life. He currently lives in Velma, Oklahoma with his wife Christi Johnston. Scott's passion for hunting and fishing led him to guiding hunters for the past 25 years. Scott is knowledgeable on the features you want for your hunting land, farm or cattle ranch. Give Scott a call if you are looking to buy or sell property in Central or Southwest Oklahoma.

Scott Johnston is a licensed Real Estate Sales Associate with the **Oklahoma Real Estate Commission**.

***Cattle Ranches, Farm Land, Hunting Properties, and Recreational Properties, 1031 Exchanges.***

***Call us at (972) 542-8511  
or check out our website at [www.swranchsales.com](http://www.swranchsales.com)***