

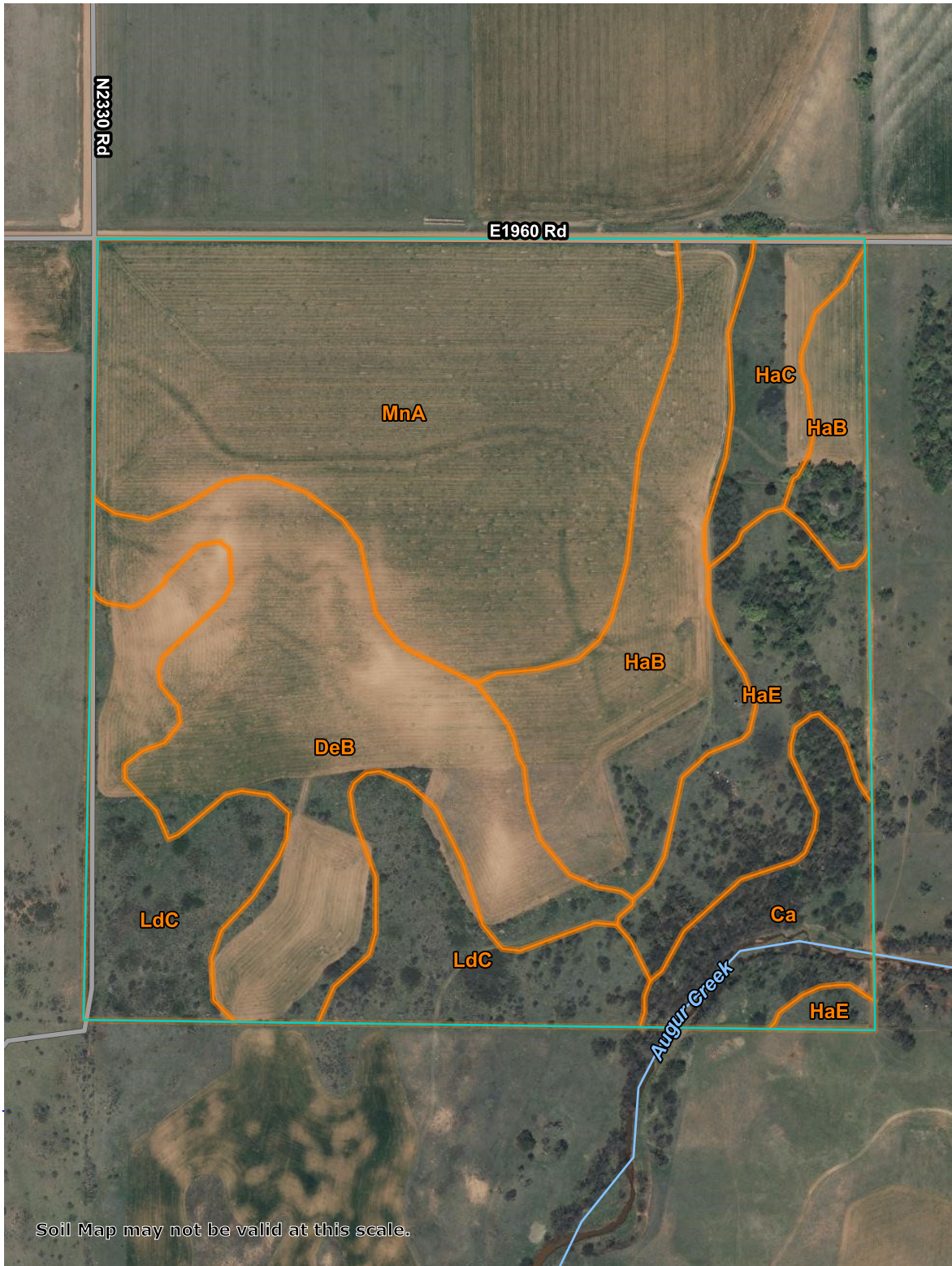
Soil Map—Tillman County, Oklahoma  
(159.31 Acre Hargis West)

98° 49' 10" W

98° 48' 32" W

34° 10' 35" N

34° 10' 35" N



34° 9' 53" N

34° 9' 53" N

98° 49' 10" W

98° 48' 32" W



Map Scale: 1:6,290 if printed on A portrait (8.5" x 11") sheet.

0 50 100 200 300 Meters

0 300 600 1200 1800 Feet

Map projection: Web Mercator Corner coordinates: WGS84



Natural Resources  
Conservation Service

Web Soil Survey  
National Cooperative Soil Survey

8/15/2022  
Page 1 of 3

## Map Unit Legend

Map Unit Symbol	Map Unit Name	Acres in AOI	Percent of AOI
Ca	Clairemont silty clay loam, 0 to 1 percent slopes, channeled, frequently flooded	9.3	5.9%
DeB	Devol loamy sand, 0 to 3 percent slopes	32.4	20.4%
HaB	Hardeman fine sandy loam, 1 to 3 percent slopes, cool	23.5	14.8%
HaC	Hardeman fine sandy loam, 3 to 5 percent slopes, cool	6.4	4.0%
HaE	Hardeman-Likes-Fortyone complex, 5 to 20 percent slopes	14.2	8.9%
LdC	Jester loamy fine sand, 3 to 8 percent slopes	24.3	15.2%
MnA	Minco very fine sandy loam, 0 to 1 percent slopes	49.0	30.8%
<b>Totals for Area of Interest</b>		<b>159.1</b>	<b>100.0%</b>