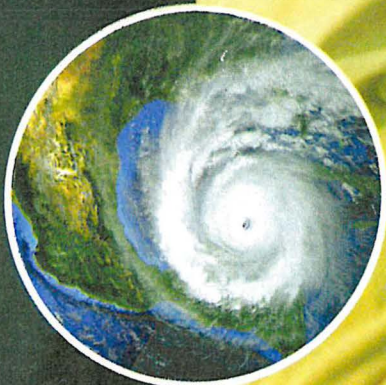


# 2021 OFFICIAL BRAZORIA COUNTY DISASTER GUIDE



HURRICANE



RISING WATER



CHEMICAL RELEASE



## ARE YOU PREPARED?



# BRAZORIA COUNTY PREPARED

*Citizens of Brazoria County,*

*As we look back over the last few years, we can see the importance of preparedness, no matter the emergency. Although we can not predict what major disaster event may come our way, we can try our best to be prepared. I encourage everyone to review and update your family emergency plan and have an emergency supply kit ready to go. Most importantly, stay informed with reliable sources that can help you make informed decisions for you and your family. Remembering to have a plan, make a kit, and stay informed could save your life and the lives of your loved ones.*

*Look through this guide and keep it handy. It is one of those reliable sources of information that can help you know what to do when a disaster occurs. If you or a loved one will need transportation to safety during an emergency event, register NOW for S T E A R (State of Texas Emergency Assistance Registry) by dialing 2-1-1. You are not obligated, but you are prepared if transportation is needed.*

*Be Prepared and Stay Safe Brazoria County!*



L.M. "Matt" Sebesta, Jr.  
Brazoria County Judge



## BRAZORIA COUNTY Official Communication and Information

Sign-up for the eNotification System  
<https://bit.ly/3wtFZFJ>



[tinyurl.com/BrazoriaCo](https://tinyurl.com/BrazoriaCo)



@BrazoriaCounty



@BrazoriaCounty



Brazoria County



[pio@brazoria-county.com](mailto:pio@brazoria-county.com)



[brazoriacountytx.gov](http://brazoriacountytx.gov)

24 Hour Emergency Event Hotline Numbers:

979-864-1064

979-388-1064

281-756-1064



Download "Ready Brazoria County"  
on the App Store or Google Play





## Download the Ready Brazoria County App Today!

### HELPING TO KEEP YOUR LOVED ONES SAFE

When it comes to an emergency situation, having a plan can help protect you and your loved ones. That is why Brazoria County has developed a mobile app that helps its citizens properly prepare and stay informed during and after a disaster. You will be able to create your family emergency plan. In addition, you will receive the latest updates and necessary information on evacuation routes, shelters, available emergency services and much more, should a disaster strike.

Find peace of mind by ensuring that you and your family are properly prepared. Download the Ready Brazoria County Preparedness App and get the tool and all the information you need in one easy-to-use app.

### Key Features:

Receive latest alerts and emergency notifications from Brazoria County

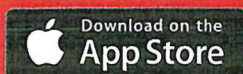
Find out about the nearest emergency shelters and special services in your area

Make your own preparedness plan

A library of resources on your phone



The app is free and is available on App Store or Google Play today!



## 2021 DISASTER GUIDE TABLE OF CONTENTS

### GETTING PREPARED

- 2 Prepare Your Home
- 2 Prepare Your Vehicle
- 3 Family Disaster Check List
- 4 Marine and Businesses Prep.
- 5 Prepare for a Flood

### IF YOU HAVE YOUR OWN TRANSPORTATION

- 6 Evacuation Plans
- 7 Evacuation Zones
- 8 Evacuating Pets
- 8 Evacuating Livestock
- 9 Emergency Shelters

### IF YOU NEED A RIDE OUT OF TOWN

- 10 STEAR Registry (2-1-1)
- 11 Evacuation HUBS in Brazoria County

### ALL HAZARD INFORMATION

- 12 Severe Weather
- 12 Flooding
- 13 After a Hazardous Materials Incident
- 14 Downed Power Lines
- 14 Rip Currents
- 14 Heat Safety

### VOLUNTEER OPPORTUNITIES

- 15 Skywarn
- 15 Volunteer Opportunities

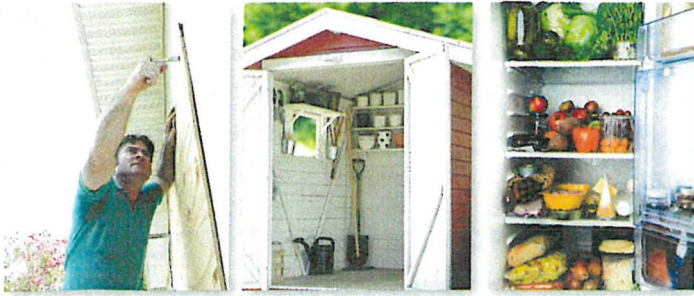
### RETURNING HOME

- 16 Returning Home



# GETTING PREPARED

## Prepare Your Home



- **Buy flood insurance.**
- There is a 30 day waiting period before newly purchased flood insurance goes into effect.
- Install commercial shutters or prepare 5/8 inch plywood panels for your windows.
- Reinforce garage doors so that they are able to withstand high winds. Garage doors are frequently the first feature in a home to fail.
- Trim all dead wood, weak, and overhanging branches from trees as they could damage your or your neighbor's property.

### Before you leave

- Move outside items to safety, such as patio furniture, plants, and grills.
- Put valuable documents in waterproof containers and take them with you when you evacuate.
- Turn off electricity at the main circuit breaker or fuse box.
- Turn off gas at the appliances.
- Remove perishable items from your refrigerator and freezer.
- Make a final walk-through inspection before closing the door.
- Close all interior doors in your home.



### Brazoria County eNotification System

Sign-up to receive emails on upcoming events, projects, road closures, emergency communications, etc. Stay informed!  
<https://bit.ly/3wtFZFJ>



## Prepare Your Vehicle

- Fill up with fuel before you leave town. It's smart to keep your tank at least half full during the entire hurricane season.
- Check your vehicle's fluid levels and ensure there is adequate coolant in the radiator.
- Check your tire pressure.
- Ensure you have a jack, a lug wrench, and know where they are in the vehicle.
- Carry enough water and non-perishable food for you and your passengers in case you become stranded.
- Have a working flashlight and extra batteries.
- If you are stranded, stay with your vehicle and use emergency flashers. Tie a white cloth on the antenna or door handle and raise the hood.
- Motorists should fill their tanks before evacuating.
- TxDOT works with the private sector to assure fuel availability on designated evacuation routes only.
- TxDOT courtesy vehicles will be patrolling designated evacuation routes for those stranded.



### If you're traveling with children be sure to pack items to help keep them entertained

- Reading materials, puzzle, games, coloring books, and electronics with extra chargers and batteries.
- Fun road games like Highway BINGO and I Spy. Go online to find lists and ideas.
- Low sugar snacks and sugar free drinks.
- A change of clothes.





# GETTING PREPARED

## Family Disaster Checklist

### Essentials

- ☐ Cell phone and charger
- ☐ This guide
- ☐ Battery-operated radio
- ☐ Flashlight
- ☐ Extra Batteries
- ☐ Cash
- ☐ Map of the area

### Baby Needs

- ☐ Formula, diapers, bottles, medication and powdered milk.

### Medical Needs

- ☐ Insulin
- ☐ Prescription drugs in original containers
- ☐ Heart and high blood pressure needs
- ☐ Denture needs
- ☐ Extra eye glasses
- ☐ Contact lenses and supplies
- ☐ Doctor's phone numbers

### Clothing & Bedding

- ☐ Plastic garbage bags, ties
- ☐ Sunglasses
- ☐ Raingear
- ☐ Sturdy shoes or work boots
- ☐ Blankets or sleeping bags
- ☐ Complete change of clothing and footwear per person

### Cooking Preparation

- ☐ Mess kits or paper cups, plates and plastic utensils
- ☐ Non-electric can opener, utility knife
- ☐ Barbecue for outdoor use only with charcoal and lighter, or sterno stove
- ☐ Pot or pan
- ☐ Manual can opener
- ☐ Barbecue utensils and cooking utensils

### Entertainment

- ☐ Games & books

### Safety

- ☐ First Aid Kit (one for your home and one for each car)
- ☐ Fire Extinguisher
- ☐ Whistle
- ☐ Compass

### Food

- ☐ Minimum 7-day supply of nonperishable food that requires no refrigeration or preparation, and little or no water
- ☐ Dry cereal
- ☐ Peanut butter
- ☐ Canned fruits
- ☐ Canned vegetables
- ☐ Canned juice
- ☐ Ready-to-eat canned meats
- ☐ Ready-to-eat soups (not concentrated)
- ☐ Quick energy snacks
- ☐ Graham crackers

### Important documents

- ☐ Important telephone numbers
- ☐ Record of bank account numbers
- ☐ Family records (birth, marriage, death certificates)
- ☐ Inventory of household valuables with digital pictures and video
- ☐ Copy of will, insurance policies
- ☐ Records of credit card account numbers and companies
- ☐ Copy of passport, social security cards, and immunization records
- ☐ Current Utility Bills

### Pet Needs

- ☐ Food, leash, collar/ harness, carrier, non-tip food and water containers

### Water

- ☐ 7 gallons per person, minimum, in a food-grade, plastic container
- ☐ Additional water for sanitation

### Sanitation

- ☐ Disinfectant
- ☐ Household chlorine bleach
- ☐ Soap, liquid detergent
- ☐ Toiletpaper, towelettes, paper towels
- ☐ Personal hygiene items
- ☐ Cloth towels (at least 3)
- ☐ Feminine supplies
- ☐ Plastic bucket with tight lid
- ☐ Plastic garbage bags, ties (for personal sanitation use)
- ☐ Hand Sanitizer

### Supplies

- ☐ Insect Repellent
- ☐ Sunscreen
- ☐ Aluminum Foil
- ☐ Paper, Pencil
- ☐ Plastic sheeting and tarp
- ☐ Medicine dropper
- ☐ Needles, thread
- ☐ Matches in a waterproof container
- ☐ Plastic storage containers
- ☐ Ziplock bags

### Tools

- ☐ Assorted nails, wood screws
- ☐ Pliers, screwdriver, hammer
- ☐ Paper, Pencil
- ☐ Heavy rope
- ☐ Tape, duct tape and plumber's tape or strap iron
- ☐ Patch kit and can of seal-in-air for tires
- ☐ Shut off wrench to turn off household gas & water

### You may include

- ☐ Family photos, jewelry and select irreplaceable personal items.
- ☐ An external Hard Drive





## Protecting Your Boat Marine Prep

- Check your marina contract for policies and procedures for hurricanes.
- Check with the manufacturer for proper ways to secure your boat during a storm.
- Consider moving arrangements well in advance of an approaching storm.
- Trailerable boats should be removed from the water and securely stored at least 48-hours before a hurricane is expected to make landfall.
- Purchase necessary hurricane materials such as additional mooring lines, crew anchors, fenders, fender boards, chafing gear, and anchors.
- Safe storm moorings should consist of good condition ropes of sufficient diameter and length, with at least three or four substantial anchor points.
- Do not moor parallel to bank. Receding tides often capsize boats in this type of mooring.

## Business & Employee Preparation

- Identify and protect vital records. Backup and store key files off site.
- Protect electronic equipment from possible water damage.
- Have extra cash and blank checks in case extra money is needed after the storm.
- Identify a safe room for employees who must remain in the building.
- Develop a 24-hour emergency contact list with phone numbers for employees to check in and receive company information.
- Establish a temporary location for business operations in case your facility is damaged.
- Give employees enough time to secure their homes and families.
- Consider paying employees before they leave to prepare their homes.

## What to do if you live in a flood-prone area:

- Buy **flood** insurance.
- Determine if you live behind a levee, find out who owns the levee near you, and do your part to promote levee safety.
- Visualize the impact if your levee is over-topped or breached and your neighborhood is flooded.
- Develop an emergency action plan to follow in case of flooding.
- Take advance precautions to reduce potential flood damage.
- Support funding initiatives for levee improvement projects.





## GETTING PREPARED

# How to prepare for a flood

## Be informed

- Know if you are located in a flood-prone area and your flood risk.
- Stay informed through local media, trusted social media sites, the Ready Brazoria County App, city and/or county websites.

## If you have pets or livestock

- Consider precautionary evacuation of your animals. Waiting until the last minute could be fatal for them and dangerous for you.
- Move livestock to higher ground.
- Don't leave companion animals behind if you evacuate your home. Tying up animals can cause the animal to suffer unnecessarily and be vulnerable to the elements and possible drowning.
- Prepare an animal emergency kit. The kit should include food, bowl, leash, crate, bed, toys and any medication your animal may need.



- Anchor your fuel tanks. Unanchored tanks can float, rupture, and release fuel.
- Turn off your electricity at the breaker box and unplug sensitive equipment, such as computers, *TV's*, etc. before evacuating your home.

## Protect your home

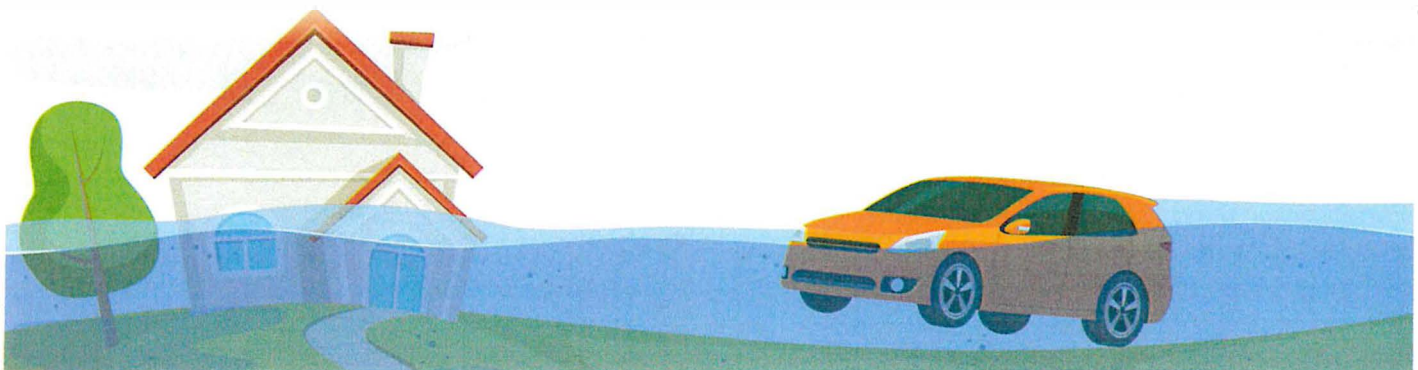
- Clear gutters and drains. Keep gutter and drainage systems clear to carry water away from your home.
- Catalog possessions. Using a digital camcorder or camera, create a home inventory for insurance. Store digital files on a USB drive and take it with you during an evacuation event.
- Raise furniture and move expensive items to a safe location. Take irreplaceable items such as photographs and important documents with you if asked to evacuate.

## Be prepared to evacuate

- If Mandatory Evacuation is issued by officials, leave the area for your safety and the safety of your family. REMEMBER, take your animals with you.
- For your safety, you will not be able to re-Enter an evacuated area until area is deemed safe to return by local officials.

## Turn around don't drown

- Do not drive into or go near flooded streets or areas.
- Do not go around safety barriers or barricades.





# IF YOU HAVE YOUR OWN TRANSPORTATION

## Evacuation Plans

### *How do I know when to evacuate?*

**Don't wait! It is NOT safe to wait. Plan to leave early.** Mandatory evacuation orders will come from your local officials. Evacuations will be based on zip codes. Please be prepared to leave immediately. See pages 19-21 for specific information pertaining to your city's communication of recommended evacuations.

### *Should I evacuate?*

Do not wait until a mandatory evacuation is issued. Monitor conditions and leave whenever you can. Hurricanes and disasters can be extremely unpredictable and can become much more dangerous in a matter of hours.

### *Where should I go?*

You may evacuate to any city you choose. Brazoria County residents who need shelter should go to Belton, Texas. If you do not have hotel reservations or family you can stay with, you may evacuate to the public shelters. **See map on page 10.**



### *What route should I take?*

There are no mandatory routes you must take when evacuating from your city. In fact, there are several different routes you may take. When weather is good, take your family on an outing to check routes and become familiar with roadways and fuel locations.

The State has designated evacuation routes: SH-36, SH-288, SH-6, I-45, SH-290, HWY-59. If you choose to take an alternate route, essential services such as food, fuel, etc. are not guaranteed. Depending on the strength of the storm, contra-flow lanes might be open on SH-45, I-10, and SH-290 thirty-six (36) hours prior to the arrival of gale force winds. Plan your evacuation routes carefully (having more than one route planned), realizing that contra-flow lanes have priority over all other routes.



### *When evacuating you should:*

- Coordinate your departure with the people who will be traveling with you.
- Notify an out-of-area person of your evacuation plans.
- Make arrangements for your pets.
- Pack your disaster supply kit into your vehicle.
- Secure your home.
- Double check your evacuation route and leave.

### *Should I carry food and drinks in my car?*

Yes! Stopping for food or drinks during a large scale evacuation may significantly delay you in getting to your destination. Some restaurants and stores along hurricane routes may be closed and those that are open are likely to be very crowded. Additionally, once you leave the evacuation route to purchase food or drinks, it may be difficult to re-enter the flow of traffic.

### *What can I do to help others?*

Check on friends, neighbors and assist them if you can to make sure they can evacuate. If you cannot, help them get in touch with the local emergency management office.



### *I don't want to evacuate!*

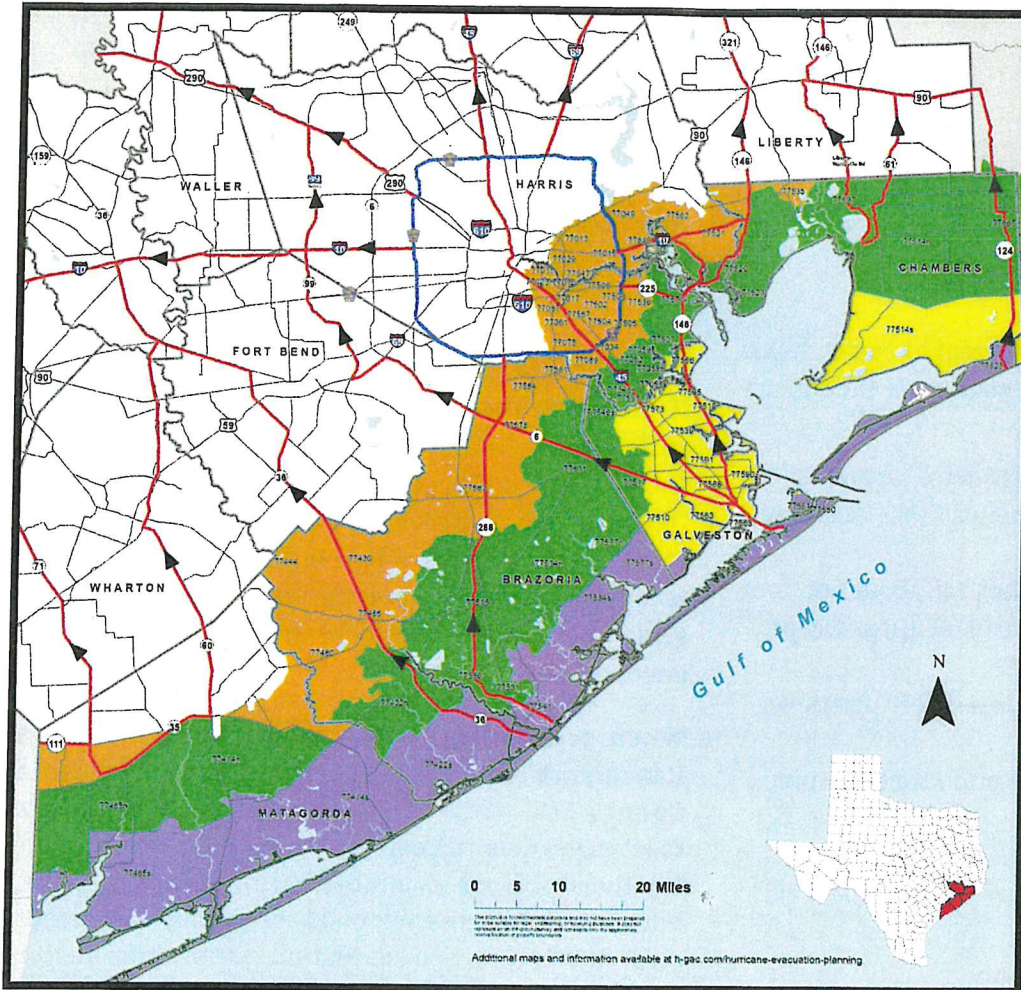
Should you choose to stay there will be **NO SHELTERS** in Brazoria County. There will be **NO SERVICES** available to you (sewer, water, electricity, etc). Hospitals will close, ambulances will not run, and police and fire cannot respond until the storm passes.



IF YOU HAVE YOUR OWN TRANSPORTATION

# Know your evacuation zone

Mandatory evacuations will be based on zip codes. Be prepared to leave immediately after your zip code is called.



Check COUNTY road conditions online

[tinyurl.com/s4s6pdsu](https://tinyurl.com/s4s6pdsu)



Check STATE road conditions online

[drivetexas.org](https://drivetexas.org)

1-800-452-9292

## Brazoria, Chambers, Galveston, Harris, and Matagorda Hurricane Evacuation Zip-Zones Coastal, A, B, C

### Route Designation

- Evacuation Corridors
- Evacuation Connections
- Other Roads
- County Boundary

ZIP ZONE COASTAL				
77414s	77422s	77465s	77534s	77541
77550	77551	77554	77563	77577s
77623				
ZIP ZONE A				
77058s	77510	77514s	77518	77539
77563	77565	77568	77573	77586
77590	77591			
ZIP ZONE B				
77058n	77059	77062	77414n	77422n
77465n	77507	77511	77514n	77515
77517	77520	77523	77531	77534n
77546n	77546s	77560	77566	77571
77577n	77597	77598	77665	
ZIP ZONE C				
77011	77012	77013	77015	77017
77023	77029	77034	77049	77061
77075	77087	77089	77430	77444
77480	77486	77502	77503	77504
77505	77506	77521	77530	77535
77536	77547	77562	77578	77581
77583	77584	77587		

Some zip codes are split into north (n) and south (s) for evacuation purposes.



Revision Date: March 19, 2021  
Expiration Date: December 31, 2021  
Map Created by:  
Houston-Galveston Area Council



# IF YOU HAVE YOUR OWN TRANSPORTATION

## Evacuating Pets



*All food and medication must be provided by owner.* If you have questions, please contact your local emergency manager (pages 18–20).

- As a general rule, pets will be sheltered separately with the exception of service animals that must stay with their owners.
- If you are evacuating to a hotel, ask about pet policies that might exist. Not all facilities accept animals.
- All animals must be housed in a sturdy plastic or metal cage.
- All food/medication must be provided by owner.

### *Important pet supplies:*

- ☐ Medications
- ☐ Food and water
- ☐ Non-tip food and water containers
- ☐ Leash/collar, harness, and carrier
- ☐ Records of vaccinations
- ☐ Hand sanitizer
- ☐ Waste disposal bags
- ☐ Training pads
- ☐ Towel or blanket



## Evacuating Livestock



## Where to Go?

If you have friends or family who have a place to board your livestock, that is your best option. Public shelters are temporary, lasting maybe a few days. Dripping Springs Ranch Park and Event Center, located at 1042 Event Center Drive in Dripping Springs, can accommodate cattle, horses, and sheep, swine and goats, high value livestock—horses, show animals, youth animal projects, etc.

When evacuating livestock to Dripping Springs Ranch Park and Event Center, contact the Brazoria County EOC (979) 864-1064 before leaving home to let Hayes County know you're coming. Other shelters for livestock are available throughout the state, but contact information on those sites isn't released until shortly before an evacuation. As this information is received, call the Brazoria County Emergency Management EOC at (979) 864-1064. Evacuation shelters provide only shelter and water. Feed and hay are the owner's responsibility. Evacuation shelters require all equine to have current vaccinations and Coggins test paperwork.

## **Brazoria County Livestock Guide:**

**Contact the Brazoria County  
AgriLife Extension Office at  
979-864-1566**



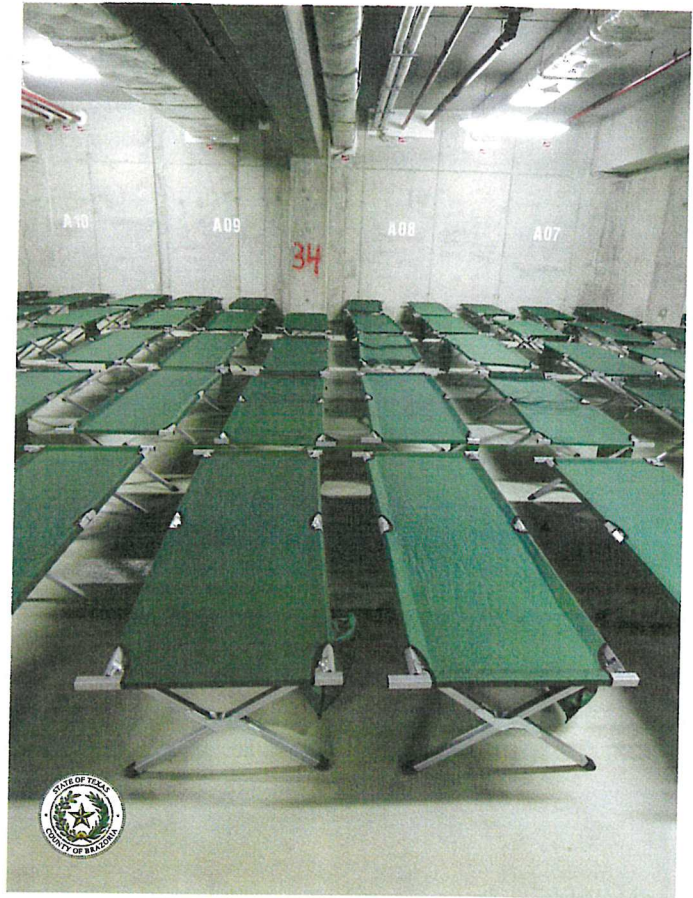
# IF YOU HAVE YOUR OWN TRANSPORTATION

## What to Expect in an Emergency Shelter

When disasters occur, the county or state may provide a safe refuge in temporary emergency shelters. These shelters can be located in schools, churches, office buildings or other facilities. General population shelters are stocked with basic need essentials, such as food, water, and a warm place to sleep. Keep in mind, a shelter will not be able to provide the same level of comforts of home or a hotel. Shelters can be noisy, crowded, boring, short-staffed, and provide very little privacy. If you are able, staying with friends or relatives is a better choice.

Items to Bring to an Emergency Shelter:

- Bring identification
- Important /insurance papers
- Bring blankets/sleeping bags, pillows
- Bring baby supplies – food, diapers, formula, medication, etc.
- Bring cards/games/books to pass the hours
- Flashlights with extra batteries
- Cell phone and charger
- Important phone numbers, i.e. family members, doctor, etc.
- Prescription and emergency medication in original containers
- Medical equipment, i.e. oxygen/wheelchair
- Extra clothing
- Specialty snacks and juices for dietary needs
- Hygiene supplies
- Shower Shoes
- Basic snacks
- Folding chairs
- Other comfort items as needed
- Pets ONLY in carriers
- Pet leashes, food bowls
- Pet health records
- No alcohol, or illegal drugs are allowed in public shelters



***Don't forget your animals supplies and necessities!***



Photo provided by ASPCA



IF YOU NEED A RIDE OUT OF TOWN



# S.T.E.A.R. REGISTRY

State of Texas Emergency Assistance Registry

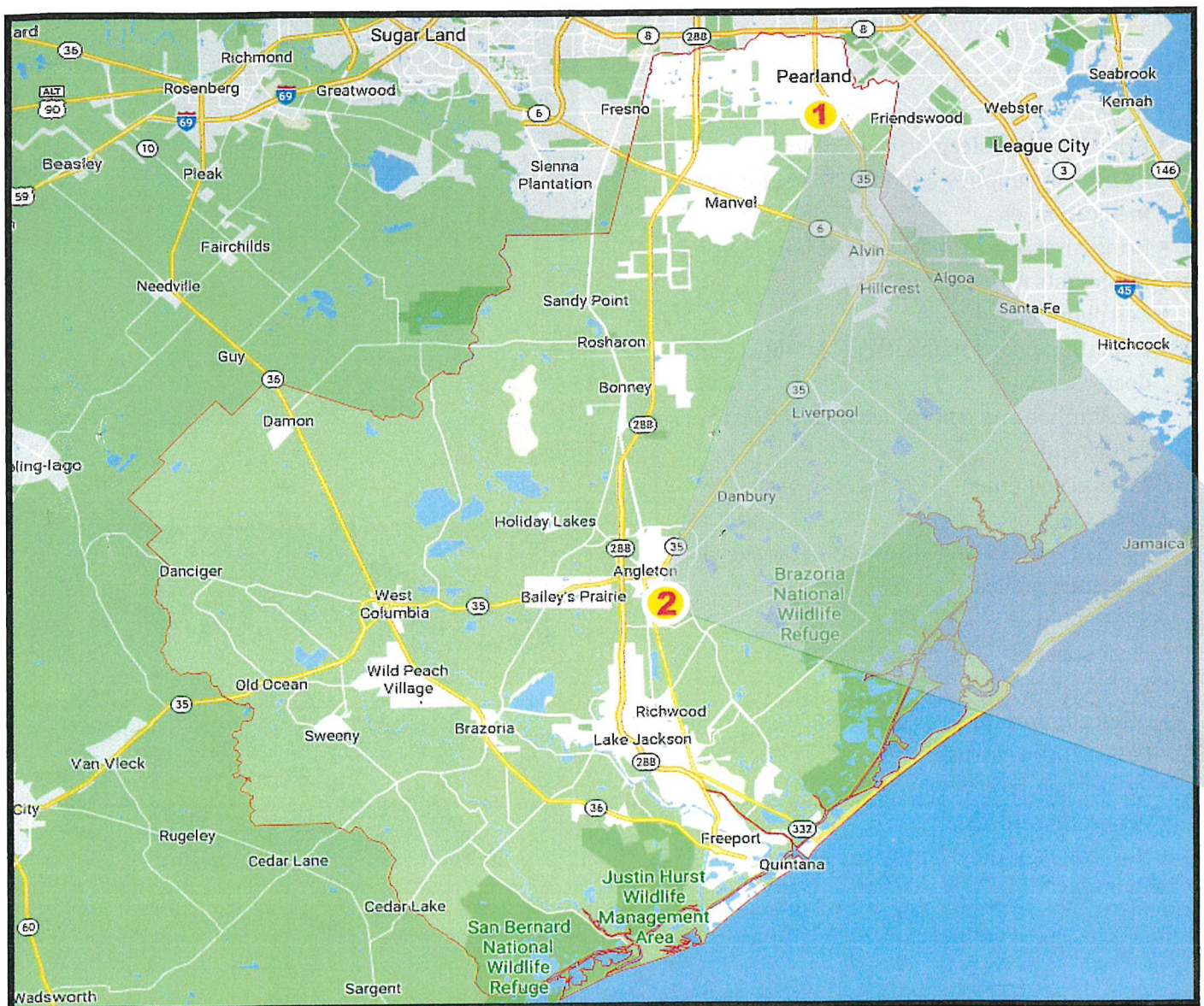
*If you need a ride to safety, during any emergency register with STEAR today!*

This service is for people who cannot drive themselves and have no other transportation during an emergency event.

Please register by dialing 2-1-1 or visit:  
<http://stear.tdem.texas.gov>



**REGISTER  
NOW!**





# IF YOU NEED A RIDE OUT OF TOWN

## Evacuation HUBS in Brazoria County



### What is a HUB?

A HUB is a meeting location for residents who need public transportation during an evacuation. Residents will be checked in and bused to an evacuation shelter.

### HUB Locations

**1 PEARLAND**  
Recreation Center  
4141 Bailey Road  
Pearland, TX

**2 ANGLETON**  
Fairgrounds  
901 S Downing Rd  
Angleton, TX

If you need  
assistance getting  
to one of these  
HUBS, contact  
your emergency  
coordinator.

"See Pages 18-20"

### What should I bring with me?

- Medications for at least 10 days.
- Driver's license or state issued picture ID.
- Sleeping pads or air mattresses.
- Blankets or a sleeping bag for each person.
- Robe & shower shoes with toiletries.
- Books, cards, games and QUIET toys for children.
- Snacks
- Five days worth of clothing
- No more than two pieces of luggage and one carry-on bag per person.
- **NO Alcoholic beverages, or illegal drugs are allowed in HUBs or on buses.**

### Will my pet ride with me?

- HUB Coordinators have final say over all pet transports.
- As a general rule, pets will be transported with the owner. However, if a situation dictates, they may be transported in a separate vehicle.

### Public transportation and animal evacuations

- Only non-aggressive household pets will be permitted. No reptiles or farm animals.
- Up to two pets per household will be allowed on the bus. If you feel you **MUST** take more than two pets, please contact your city's local emergency manager **BEFORE** an evacuation is called.
- All animals **MUST** be transported and housed in a sturdy plastic or metal cage/transport device. No cardboard or partly enclosed devices will be allowed.
- Animals must remain secured in the travel device at **ALL TIMES** while on the bus and at the HUB.
- Pets must have current rabies shot records.
- Owners are responsible for supplying food and water for their animals.
- We are not liable for any losses or injuries to your animals while being evacuated.



# ALL HAZARD INFORMATION

## Severe Weather

### Thunderstorms

A thunderstorm is contains lightning caused by unstable atmospheric conditions. Thunderstorms may occur by themselves, in clusters, or in lines. So, it is possible for several thunderstorms to affect one location in the course of a few hours.

Severe thunderstorms can bring heavy rains, strong winds, hail, lightning, and tornadoes. To protect yourself in a severe thunderstorm, get inside a sturdy building away from windows and stay tuned to a battery-operated radio for weather information.

### Know the Difference

Warning	Weather hazard is occurring, imminent or likely. Poses a threat to life/property. <b>Take Protective Action.</b>
Watch	Risk of weather hazard in the near future. Could pose a threat to life/property. <b>Have a Plan of Action.</b>
Advisory	Weather hazard is occurring, imminent, or likely. Could cause significant inconvenience. <b>Use Caution.</b>

## Lightning

### Do's and Don'ts

#### Do

Go Inside When You Hear Thunder or See Lightning!

Find a Sturdy House, Building, Car With A Hard-Top Roof

Stay Indoors For at Least 30 Minutes After You Last Hear Thunder



#### Don't

Retreat to Dugouts, Sheds, Pavilions, Picnic Shelters or Other Small Structures

Use or Touch Electronics, Outlets, or Corded Phones

Go Under or Near Tall Trees, Swim or Be Near Water, Be Near Metal Objects or Windows



[weather.gov/lightning](http://weather.gov/lightning)

## Flooding

Floods are the most common natural disaster in the United States. Failing to evacuate flooded areas or entering flood waters can lead to injury or death. If you are under a flood warning:

- Find safe shelter right away
- Do not walk, swim or drive through flood waters—Turn Around, Don't Drown!
- Six inches of moving water can knock you down, and one foot of moving water can sweep your vehicle away
- Stay off bridges over fast-moving water

Depending on the type of flooding:

- Evacuate if told to do so
- Move to higher ground or a higher floor
- Stay where you are



Visit [www.ready.gov/floods](http://www.ready.gov/floods) for more information.



# ALL HAZARD INFORMATION

## After a Hazardous Materials Incident

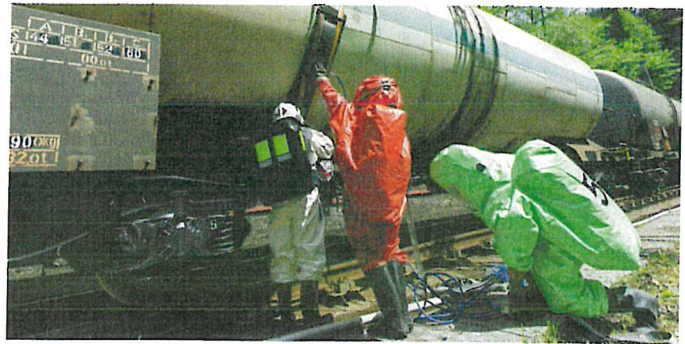
Hazardous materials can include flammable and combustible substances, poisons, and radioactive or explosive materials. Emergencies can happen at any time where you live, work or play. You are at risk when hazardous materials are released in harmful amounts.

If you are within an area where hazardous materials are released, move to a safe location immediately, preferably upwind from the release, and notify emergency personnel.

During a hazardous material emergency

- Act quickly and move to a safe area upwind if possible
- Notify emergency personnel about the hazardous material
- Follow specific instructions from local authorities or emergency personnel

If you are within the release area and asked to shelter in place, follow specific instructions from local authorities and emergency personnel. You might be

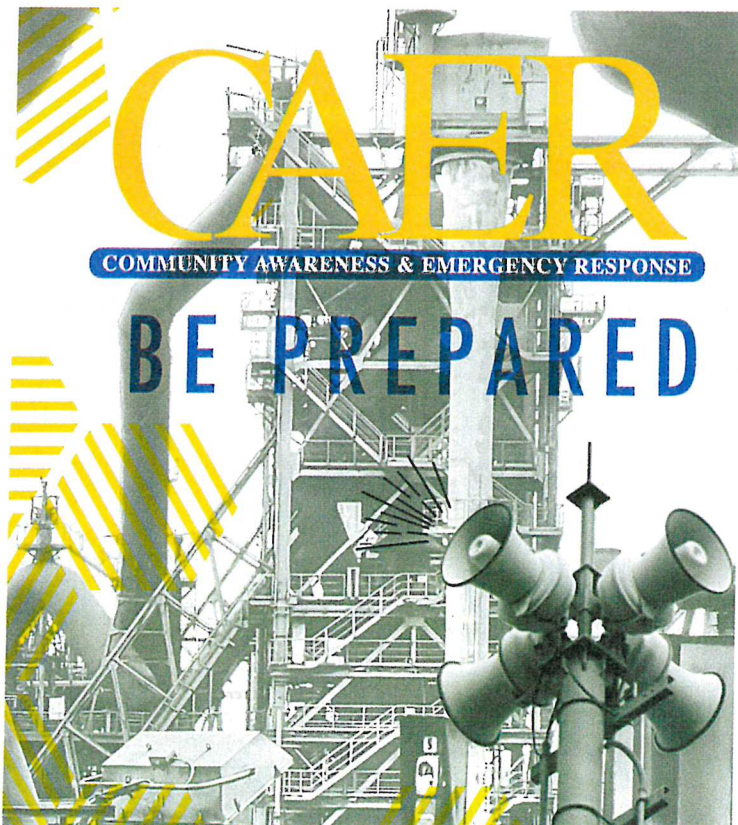


instructed to do the following:

- Go inside your home, vehicle or building
- Close all windows and doors
- Turn off furnace, cooking appliances and air conditioners

Remember:

- Act quickly
- Notify emergency personnel
- Follow all specific safety instructions



## FAST FACTS

Brazosport CAER was the first industrial alert program of its kind in the nation.

The CAER ALERT SYSTEM consists of 15 strategically placed sirens in the Brazosport area that are tested each Monday at 12:10 pm for 45 seconds.

CAER sirens can be heard for a one-mile radius. They stand 50-feet high and are radio controlled.

CAER operates a 24-hour telephone alert system called CodeRED Mobile Alert. This system is geo-aware and sends alerts to registered phones in affected areas in the event of an industrial emergency. Download the app or go to [brazosportcaer.com](http://brazosportcaer.com) to register.

The community can call 979-238-CAER(2237) with questions.



@BPORTCAER

[www.BRAZOSPORTCAER.com](http://www.BRAZOSPORTCAER.com)

979.238.CAER (2237)



# HAZARD INFORMATION

## Downed Power Lines

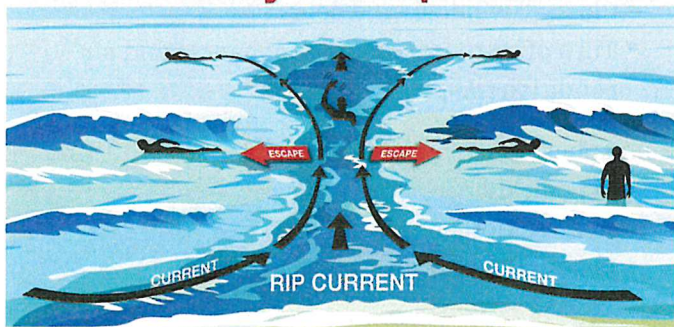
Always assume that a fallen power line is live, and follow these guidelines:

- Call 9-1-1 immediately to report a fallen power line
  - Avoid touching the downed line with your hand or an object, such as a stick, broom or pole
  - Avoid driving over a fallen power line
  - Keep children and pets away from fallen electric lines
- Avoid touching anything, such as a car, object or equipment, or anyone who is in contact with a fallen power line



## RIP CURRENTS

Know your options



Rip currents are powerful currents of water moving away from shore. They can sweep even the strongest swimmer away from shore. If at all possible, swim near a lifeguard.

### IF CAUGHT IN A RIP CURRENT

- ◆ Relax, rip currents don't pull you under.
- ◆ Don't swim against the current.
- ◆ Swim out of the current, then to shore.
- ◆ If you can't escape, float or tread water.
- ◆ If you need help, yell or wave for assistance.

### SAFETY

- ◆ Know how to swim.
- ◆ Never swim alone.
- ◆ If in doubt, don't go out.
- ◆ Swim near a lifeguard.

More information about rip currents can be found at the following websites:

[weather.gov/safety/ripcurrent/](http://weather.gov/safety/ripcurrent/)  
[usla.org](http://usla.org)



## Practice HEAT SAFETY Wherever You Are

Heat related deaths are preventable. Protect yourself and others from the impacts of heat waves.



### Job Sites

Stay hydrated and take breaks in the shade as often as possible.



### Indoors

Check up on the elderly, sick and those without AC.



### Vehicles

Never leave kids or pets unattended -  
LOOK before you LOCK



### Outdoors

Limit strenuous outdoor activities, find shade, and stay hydrated.



[weather.gov/heat](http://weather.gov/heat)



# VOLUNTEER OPPORTUNITIES

## AMATEUR RADIO



When your family's lives may be at risk...  
What communication system do YOU want to have?

### Amateur Radio Emergency Service

Make friends and enjoy the challenge!

- Get your Ham Radio License
- Practice with on-the-air "nets" or networks
- Participate in public events
- Volunteer and help others!
- Communication for disaster preparedness
- Getting the message through for your friends and your family

Website: [www.brazoriacountyares.org](http://www.brazoriacountyares.org)  
Contact: [info@brazoriacountyares.org](mailto:info@brazoriacountyares.org)



## HOW CAN I HELP?

### BRAZORIA COUNTY CITIZEN CORPS NEEDS YOU!

In large emergencies, first responders can be quickly overwhelmed. Citizens on scene may need to take action to help save lives.

Citizen Corps will train you to prepare yourself, your family, and your neighbors for disasters.

The Brazoria County Citizen Corps has several key missions:

- Initial Neighborhood Response
- Staff Evacuation Hubs for an evacuation
- Help staff Emergency Management Call Center
- Staff shelters during disasters
- And MUCH MORE!

### ALL TRAINING IS FREE!

Positions for everyone! Great for groups and organizations! Sign up today!



See our calendar at:  
[www.homelandpreparedness.org](http://www.homelandpreparedness.org)  
or contact Homeland Preparedness Project at:  
[info@homelandpreparedness.org](mailto:info@homelandpreparedness.org)  
Or call 281-844-3653.

## Storm Spotter Program

If you are interested in volunteering and/or supporting Salvation Army, Freeport Corps give them a call at (979) 233-5420, or drop by at 1618 N. Avenue J, Freeport, TX



The National Weather Service issues forecasts and warnings for the protection of life and property. Severe weather reports from weather spotters are critical for the issuance of accurate and timely warnings and thus contribute to public safety. Each year the NWS offers numerous weather spotter training sessions. Spotters are trained at how to report hazards such as hail, damaging winds, funnel clouds, tornadoes and flooding and how to identify cloud formations that indicate severe thunderstorms. The training is free, runs about two hours and is great for anyone who is interested in weather and wants to provide information directly to the National Weather Service. For more information on this program and to register for a course in your area visit [www.weather.gov/SKYWARN](http://www.weather.gov/SKYWARN).





# RETURNING HOME



## Safety Tips for Your Return

Just as you had a plan to evacuate, you will want to be prepared to return home after officials give the all clear.

- Find out if it is safe to enter your community or neighborhood. Follow advice of local authorities.
- Check city and/or county websites.
- Reliable social media sites. Ex. Brazoria County FB and/or Twitter [tinyurl.com/BrazoriaCo](https://twitter.com/BrazoriaCo).
- Have cash with you. ATM's may not work and stores may not be able to accept credit or debit cards.
- Bring supplies such as flashlights, batteries, bottled water and nonperishable foods in case utilities are out.
- Create back-up communication plans with family and

friends in case you are unable to call from affected area.

- Plan for delays when traveling. Bring extra food, water, pillows, blankets and other items. Keep the fuel tank of your vehicle as full as possible.
- Carry a road map to help you route.
- Understand that recovery takes time. Focus on the positive and have patience.
- If possible, leave children and pets with a relative or friend. If not, keep them away from hazards and floodwater.
- Beware of rodents, snakes, insects and other animals that may be on your property or in your home.

## Items to bring when returning home

- |  |   |
|--|---|
| <input type="checkbox"/> Government-issued photo ID and proof of address | <input type="checkbox"/> Long sleeved shirts, long pants, sturdy waterproof boots and work gloves |
| <input type="checkbox"/> Important phone numbers                         | <input type="checkbox"/> Flashlight, portable radio and extra batteries                           |
| <input type="checkbox"/> Bottled water and non-perishable foods          | <input type="checkbox"/> Cameras for photos of damage for insurance claims                        |
| <input type="checkbox"/> First aid kits                                  | <input type="checkbox"/> Tarp(s) to cover roof damage and control leaks                           |
| <input type="checkbox"/> Cleanser/hand cleaning gel for personal use     |   |
| <input type="checkbox"/> Hygiene products and toilet paper               |   |
| <input type="checkbox"/> Insect repellent and sunscreen                  |   |

## WELL WATER TESTING AFTER A FLOOD

Water wells that received flood water may be contaminated with bacteria, which can make you sick. Sources of bacteria may include a septic system and fecal matter from wildlife and domestic animals. Additionally, chemical contaminants can enter a well making the water unsafe to drink.

Well water can be tested at the Brazoria County Water Lab located at 409 East Orange, Angleton, Texas 77515. Water sample must be collected in a container from the lab.

## Generator Safety

When power has not been restored many people turn to generators for temporary power. Before using a portable generator know the risks to insure safe and proper use.

- Never attach a generator directly to the electrical system of a structure (home, RV trailer, etc.) unless a qualified electrician has properly installed the generator with a transfer switch.
- Always plug electrical appliances directly into the generator using the manufacturer's supplied cords or extension cords that are grounded (3-pronged).
- Inspect the cords to make sure they are fully intact and not damaged.
- Do not overload a generator.
- Make sure a generator is properly grounded.
- Keep a generator dry.



## RETURNING HOME

# What to do after a flood

Returning home after a flood can be dangerous and difficult. Use caution when entering a disaster area, and be ready to deal with the conditions at hand.

- Return home only when authorities say it is safe.
- Be aware of areas where floodwaters have receded and watch out for debris, snakes, fire ants, alligators, etc. Flood waters often erode roads and walkways.
- Do not wade through flood waters.
- Do not attempt to drive through areas that are still flooded.
- Avoid standing water as it may be electrically charged from underground or downed power lines.
- Photograph damage to your property for insurance purposes.



[www.ready.gov/floods](http://www.ready.gov/floods)

## Separating Your Debris

Debris should be placed curbside, without blocking the roadway or storm drains.

### NO PICKUP ZONE

Any debris placed from the sidewalk toward your property will not be picked up.



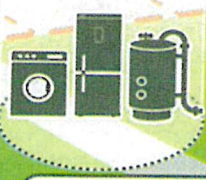
**Normal Household Trash**  
Normal household trash and bagged debris of any kind will not be picked up with disaster debris. You should continue to follow your normal garbage removal schedule.



**VEGETATIVE DEBRIS**  
• Leaves (do not put in bags)  
• Logs  
• Plants  
• Tree branches



**CONSTRUCTION & DEMOLITION DEBRIS**  
• Building materials  
• Carpet  
• Drywall  
• Furniture  
• Lumber  
• Mattresses  
• Plumbing



**APPLIANCES & WHITE GOODS**  
• Air conditioners  
• Dishwashers  
• Freezers  
• Refrigerators  
• Stoves  
• Washers, dryers  
• Water heaters



**ELECTRONICS**  
• Computers  
• Radios  
• Stereos  
• Televisions  
• Other devices with a cord



**HOUSEHOLD HAZARDOUS WASTE**  
• Cleaning supplies  
• Batteries  
• Lawn chemicals  
• Oils  
• Oil-based paints and stains  
• Pesticides

### DEBRIS SEPARATION

Separate debris into the six categories shown below.

#### DO NOT STACK OR LEAN

Placing debris near or on trees, poles, or other structures makes removal difficult. This includes fire hydrants and meters.

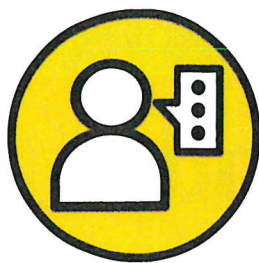
#### UNSURE WHERE TO PLACE DEBRIS?

If you don't have a sidewalk, ditch, or utility line in front of your house, place debris at the edge of your property before the curb.



For more information: [brazoriacountytexas.gov](http://brazoriacountytexas.gov)





## COMMUNICATION INFORMATION

If your city is not listed, use the County numbers.



[tinyurl.com/BrazoriaCo](https://tinyurl.com/BrazoriaCo)



@BrazoriaCounty



@BrazoriaCounty



Brazoria County



[brazoriacountytexas.gov](http://brazoriacountytexas.gov)



Search for "Ready Brazoria County" on the App Store or Google Play

### Brazoria County



Emergency Management  
pio@brazoria-county.com

24 Hour Hotline . . . . . 979-864-1064  
979-388-1064  
281-756-1064

[www.brazoriacountytexas.gov](http://www.brazoriacountytexas.gov)

### Angleton



Emergency Manager . . . . . 979-849-2383  
City Hall . . . . . 979-849-4364  
City Manager's Office . . . . . 979-849-4364  
Mayor's Office . . . . . 979-849-4364  
Fire . . . . . 979-849-1265

[www.angleton.tx.us](http://www.angleton.tx.us)

### CAER



979-238-CAER (2237)

[www.brazosportcaer.com](http://www.brazosportcaer.com)

### Bailey's Prairie

Emergency Manager . . . . . 979-849-0134  
Mayor . . . . . 979-849-0134  
Village Hall . . . . . 979-849-0134

[www.baileysprairie.org](http://www.baileysprairie.org)

### United Way of Brazoria County



979-849-9402

[www.uwbc.org](http://www.uwbc.org)

### Bonney

Emergency Manager/Mayor . . . . . 281-595-2269  
City Hall . . . . . 281-595-2269

[www.bonneytexas.gov](http://www.bonneytexas.gov)

### Salvation Army



1-979-233-5420

### Alvin

Emergency Manager . . . . . 281-388-4363  
City Hall . . . . . 281-388-4200  
Public Works . . . . . 281-388-4325  
City Manager's Office . . . . . 281-388-4230  
Mayor's Office . . . . . 281-388-4275  
Cable Access Channel . . . . . Channel 16  
RADIO . . . . . KACC 89.7 FM

[www.alvin-tx.gov](http://www.alvin-tx.gov)

### Brazoria



Emergency Manager . . . . . 979-798-2489  
City Hall . . . . . 979-798-2489  
City Manager . . . . . 979-798-2489  
24 hr. Emergency Info. Line . . . . . 979-798-9131

[www.cityofbrazoria.org](http://www.cityofbrazoria.org)

### Brookside Village

Emergency Management . . . . . 281-485-3048  
Police Chief . . . . . 281-485-4844  
Mayor . . . . . 281-485-3048  
City Hall . . . . . 281-485-3048

[www.brooksidevillage-tx.org](http://www.brooksidevillage-tx.org)



## Clute



Emergency Management . . . . . 979-265-9653  
Police Department 24 Hr Info . . . . . 979-265-6194  
Clute City Hall . . . . . 979-265-2541  
City Manager. . . . . 979-265-2541

[www.ci.clute.tx.us](http://www.ci.clute.tx.us)

## Danbury

Emergency Manager . . . . . 979-264-9482  
Mayor . . . . . 979-264-9482  
City Secretary . . . . . 979-922-1551 x5  
City Hall/Police Dept. . . . . 979-922-1551  
Utility Dept. . . . . 979-549-3129  
Fire Department . . . . . 979-922-1176  
Police Dispatch . . . . . 979-964-2392

## Freeport



Emergency Manager . . . . . 979-233-2111  
Information Message . . . . . 979-233-KNOW  
City Hall. . . . . 979-233-3526  
Police . . . . . 979-239-1211

[www.freeport.tx.us](http://www.freeport.tx.us)

## Hillcrest



Emergency Management . . . . . 832-602-9958  
Monday - Friday 8 AM - 5 PM. . . . . 281-756-0577  
City Office Not Open Following An Emergency  
Mayor . . . . . 281-748-7149  
City Marshal . . . . . 832-221-5961

## Holiday Lakes



Mon Wed Thurs & Fri 1 - 5 PM, Tues 1 - 7 PM  
Mayor . . . . . 979.849.1136  
Police Chief. . . . . 979-849-3163  
City Secretary . . . . . 979-849-1136

[www.holidaylakestexas.com](http://www.holidaylakestexas.com)

## Iowa Colony



Emergency Manager . . . . . 281-369-3444  
City Hall. . . . . 281-369-2471  
Mayor . . . . . 281-369-2471  
City Secretary . . . . . 281-369-2471  
Police Chief. . . . . 281-369-3444

[www.cityofiowacolony.com](http://www.cityofiowacolony.com)

## Jones Creek



Marshal/Emergency Mgr. . . . . 979-292-6393  
Mayor . . . . . 979-233-2700  
Fire Chief . . . . . 979-201-3594  
City Admin. . . . . 979-233-2700  
Marshal's Dept . . . . . 979-233-3091  
City Hall. . . . . 979-233-1826

[www.villageofjonescreektxas.com](http://www.villageofjonescreektxas.com)

## Lake Jackson



Emergency Manager . . . . . 979-415-2500  
City Hall . . . . . 979-415-2400  
Police Department . . . . . 979-415-2700  
Cable Access Channel . . . . . Channel 16

[www.lakejackson-tx.gov](http://www.lakejackson-tx.gov)

## Liverpool



Emergency Manager . . . . . 281-581-2342  
Mayor . . . . . 281-581-2342  
City Secretary . . . . . 281-581-2342  
Police Chief. . . . . 281-581-2233

[www.cityofliverpooltexas.com](http://www.cityofliverpooltexas.com)

## Manvel



Mayor . . . . . 281-489-0630  
City Manager/EMC . . . . . 281-489-0630  
Police Chief . . . . . 281-489-1212  
Fire Marshal/Deputy EMC . . . . . 281-489-0630  
Fire Chief . . . . . 281-692-0279  
EMS Director. . . . . 281-489-6144

[www.cityofmanvel.com](http://www.cityofmanvel.com)

## Oyster Creek



Emergency Manager . . . . . 979-233-8481  
Police Department . . . . . 979-233-8481  
City Administrator . . . . . 979-233-0243  
Mayor/City Hall . . . . . 979-233-0243  
Fire Department . . . . . 979-233-8481

[www.cityofoystercreek.org](http://www.cityofoystercreek.org)



Sign-up for the  
eNotification System  
<https://bit.ly/3wtFZFJ>





## Pearland



Emergency Manager . . . . . 281-997-4648  
City Hall . . . . . 281-652-1600  
Mayor's Office . . . . . 281-652-1654  
City Manager . . . . . 281-652-1663  
Police Department . . . . . 281-997-4100  
Cable Access Channel . . . . . Channel 16/99 UVerse  
www.pearlandtx.gov

## Quintana

Mon. - Fri. 8 AM- 4:30 PM . . . . . 979-233-0848  
Mayor . . . . . 979-233-4609  
Emergency Manager . . . . . 979-373-7255  
Water Emergency . . . . . 979-233-4281  
www.quintanatx.org

## Richwood



Mayor . . . . . 979-265-2082  
City Manager . . . . . 979-265-2082  
Emergency Manager . . . . . 979-265-8157  
City Hall . . . . . 979-265-2082  
www.richwoodtx.gov

## Surfside

Police Chief . . . . . 979-233-1531 ext 109  
Emergency Coordinator . . . . . 979-239-1151  
City Hall . . . . . 979-233-1531  
Fire Department . . . . . 979-233-5926  
www.surfsidetx.org

## Sweeny



Emergency Manager . . . . . 979-482-4617  
City Manager/Asst. EMC . . . . . 979-548-3321  
EOC (Only open during Emergency Situations) . . . . .  
. . . . . 979-548-4541  
Information Line . . . . . 979-548-3330  
After Hours . . . . . 979-548-3111  
www.sweenytx.gov

## West Columbia



Emergency Manager . . . . . 979-345-5121  
City Mgr./Emergency Mgr. . . . . 979-345-3123  
City Hall . . . . . 979-345-3123  
EOC . . . . . 979-345-1900  
Police Department . . . . . 979-345-5121  
CEMS Director . . . . . 979-345-2390  
Fire Chief . . . . . 979-345-3416  
www.westcolumbiatx.org

## Other Useful Numbers

### School Districts and Colleges

Alvin ISD . . . . . 281-388-1130  
www.alvinisd.net  
Angleton ISD . . . . . 979-864-8000  
www.angletonisd.net  
Brazosport ISD . . . . . 979-730-7000  
www.brazosportisd.net  
Columbia-Brazoria ISD . . . . . 979-799-1700  
www.cbisd.com  
Damon ISD . . . . . 979-742-3457  
www.damonisd.net  
Danbury ISD . . . . . 979-922-1218  
www.danburyisd.org  
Pearland ISD . . . . . 281-485-3203  
www.pearlandisd.org  
Sweeny ISD . . . . . 979-491-8000  
www.sweenyisd.org  
Alvin Community College . . . . . 281-756-3500  
www.alvincollege.edu  
Brazosport College . . . . . 979-230-3000  
www.brazosport.edu  
U of H - Pearland Campus . . . . . 281-212-1700  
www.uhcl.edu/pearland

### Hospitals

UTMB Health Angleton Campus . . . . . 979-849-7721  
132 E. Hospital Drive Angleton, TX 77515  
CHI St. Luke's Brazosport Medical Ctr. . . . . 979-297-4411  
100 Medical Drive Lake Jackson, TX 77566  
Sweeny Community Hospital . . . . . 979-548-3311  
305 N. McKinney St Sweeny, TX 77480  
Memorial Hermann Pearland . . . . . 713-413-5000  
16100 South Freeway Pearland, TX 77584  
Pearland Medical Center . . . . . 713-770-7000  
11100 Shadow Creek Parkway Pearland, TX 77584





# NOTES



## ATLANTIC HURRICANE NAMES FOR 2021

Ana  
Bill  
Claudette  
Danny  
Elsa  
Fred

Grace  
Henri  
Ida  
Julian  
Kate  
Larry

Mindy  
Nicholas  
Odette  
Peter  
Rose  
Sam

Teresa  
Victor  
Wanda

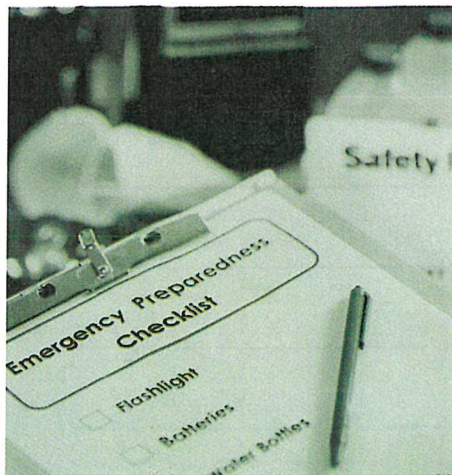


NON-PROFIT  
ORGANIZATION  
U.S. POSTAGE PAID  
ANGLETON, TX  
PERMIT NO. 38

\*\*\*\*\*ECRWSEDDM\*\*\*\*

Local Postal Customer

# BRAZORIA COUNTY



# HURRICANE PREPAREDNESS VIDEOS

# COMING IN JUNE



The 2021  
Hurricane and Disaster  
Preparedness EXPO  
is **CANCELED** due to  
Novel Coronavirus

*The EXPO is scheduled to return in 2022*