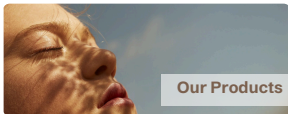




LUDITA

UNLEASH YOUR GLOW

TABLE OF CONTENTS



WOMEN ENTREPRENEURSHIP & INNOVATION

LUDITA is a women-led brand offering innovative solutions that address multiple skincare needs with a single product.

NATURAL & SUSTAINABLE

We prioritize herbal and natural ingredients in our products, avoiding artificial dyes and perfumes. Our production is sustainable and made locally in Turkey.

GLOBAL VISION & LOCAL EXPERTISE

We stay updated on global trends and continuously develop innovative products to reveal the natural beauty of our users.



LUDITA

CERTIFIED PRODUCTS AND PRODUCE

CPNP (COSMETIC PRODUCTS NOTIFICATION PORTAL)

The CPNP is a system used for the introduction and monitoring of cosmetic products in the European Union. This portal enables cosmetic product manufacturers or distributors to provide information about their products and report this information to the authorities.

ISO AND GMP (GOOD MANUFACTURING PRACTISE) CERTIFIED!

GMP certification ensures that cosmetic products are consistently produced and controlled to the quality standards appropriate for their intended use



WE BELIEVE IN NATURE

BEAUTY COMES FROM THE ESSENCE OF THE NATURE

IN OUR PRODUCTS;

WE DO NOT USE PARABENS, ARTIFICIAL DYES,
PERFUMES, OR HARMFUL CHEMICALS, AND WE
ADOPT THE PRINCIPLE OF FAIR PRODUCTION.



HERBAL
INGREDIENT



DERMATOLOGICALLY
TESTED

HERBAL EXTRACTS

Dermatologically tested; special formulas with rich plant extracts. Some of the herbal ingredients we frequently use in our products;



Centella Asiatica



Glycyrrhiza Glabra



Zingiber Officinale



Arnica Montana



Hibiscus



Oryza Sativa



Camellia Sinensis



Chamomilla Recutita



Salix Alba



Salvia Sclarea



Aloe Barbadensis



Hamamelis



Panax Ginseng



Beta Vulgaris



Ginkgo biloba



Allantoin



Tasmanian Lanceolata



Daucus Carota



Vitis Vinifera



Betula Alba



Verbena Officinalis



Persea Gratissima



Melaleuca Alternifolia



Pyrus Malus Fruit

CONCENTRATED HYALURONIC ACID SERUM

Intensively moisturises the skin. Helps our skin look firmer and fuller. Provides a vibrant and bright appearance to your skin.



BENEFITS

INTENSE HYDRATION, ANTI-INFLAMMATORY & ANTIOXIDANT PROTECTION, IMPROVES SKIN TEXTURE AND SMOOTHNESS, REDUCES THE APPEARANCE OF FINE LINES

HOW TO USE

SUITABLE FOR FACE AND NECK. USE MORNING AND NIGHT FOR BEST RESULTS.

INGREDIENTS

Aqua, Sodium Hyaluronate, Inulin, Butylene Glycol, Panthenol, Glycerin, Sodium PCA, Sodium Hyaluronate Crosspolymer, Salvia Sclarea Extract, Coleus Forskohlii Root Extract, Chamomilla Recutita Flower Extract, Cucumis Sativus Fruit Extract, PEG-12 Dimethicone, Phenoxyethanol, Hydrolyzed Sodium Hyaluronate, Polysorbate 20, Xanthan Gum, Carbomer, Triethanolamine, Tetrasodium EDTA, Sodium Benzoate, Allantoin, Chlorphenesin.



Chamomilla Recutita

BRIGHTENING VITAMIN C SERUM

It prevents the formation of wrinkles and blemishes, regulates the skin tone and makes the skin look more radiant and vibrant. With its antioxidant effect, it provides protection against external factors that the skin is exposed to throughout the day.



BENEFITS

BRIGHTENING EFFECT, DEEP HYDRATION, ANTIOXIDANT PROTECTION, GENTLE & CLEAN FORMULA

HOW TO USE

SUITABLE FOR FACE AND NECK. USE MORNING AND NIGHT FOR BEST RESULTS. APPLY MOISTURIZER AND SPF IF USED IN THE MORNING.

INGREDIENTS

Aqua, Sodium Ascorbyl Phosphate, Salix Alba Bark Water, Pyrus Malus Fruit Water, Butylene Glycol, Glycerin, Sodium Hyaluronate, Sodium PCA, Thioctic Acid, Camellia Sinensis Leaf Extract, Glycyrrhiza Glabra Root Extract, Phenoxyethanol, Polysorbate 20, Xanthan Gum, Carbomer, Triethanolamine, Tetrasodium EDTA, Sodium Benzoate, Chlorphenesin.



Camellia Sinensis



Salix Alba

COMPLEX NIGHT SERUM

It helps to moisturise the skin, reduce the appearance of wrinkles and give a smooth appearance. Provides a firmer and fuller appearance to your skin.



BENEFITS

DEEP HYDRATION, BRIGHTENING
EFFECT, SOOTHING & CALMING
FIRMING & ANTI-AGING
ANTIOXIDANT PROTECTION

HOW TO USE

SUITABLE FOR FACE AND NECK.
USE MORNING AND NIGHT FOR
BEST RESULTS. APPLY
MOISTURIZER AND SPF IF USED IN
THE MORNING.

INGREDIENTS

Aqua, Sodium Hyaluronate, Niacinamide, Butylene Glycol, Panthenol, Glycerin, Centella Asiatica Leaf Extract, Ginkgo Biloba Leaf Extract, Arnica Montana Flower Extract, Verbena Officinalis Flower Extract, Betula Alba Leaf Extract, Hydrolyzed Algin, Lecithin, Alpha-Arbutin, Phenoxyethanol, Polysorbate 20, Xanthan Gum, Caffeine, Tocopherol, Biotin, Hydrolyzed Collagen, Carbomer, Triethanolamine, Tetrasodium EDTA, Sodium Benzoate, Chlorphenesin, Hexapeptide-8 HCl.



Centella Asiatica



Arnica Montana

INTENSIVE PORE-MINIMIZING AND OIL CONTROL SERUM

Thanks to its Niacinamide and Zinc PCA content, it helps to tighten the pores and reduce the porous appearance of the skin. Glycolic, Lactic and Salicylic acid content is effective in giving the skin a smoother appearance.



Salix Alba

Salix Alba

BENEFITS

EXFOLIATES & RENEWS, BRIGHTENS SKIN TONE, DEEP HYDRATION, OIL CONTROL & CLARIFYING, SOOTHES & BALANCES

HOW TO USE

SUITABLE FOR FACE AND NECK. USE ONCE OR TWICE DAILY. START WITH LESS FREQUENT USE IF YOU HAVE SENSITIVE SKIN. APPLY MOISTURIZER AND SPF IF USED IN THE MORNING.

INGREDIENTS

Aqua, Salix Alba Bark Water, Niacinamide, Glycerin, Butylene Glycol, Sodium PCA, Isopropyl Alcohol, Glycolic Acid, Zinc PCA, Lactic Acid, Salicylic Acid, Sodium Hyaluronate, Phenoxyethanol, Polysorbate 20, Xanthan Gum, Carbomer, Triethanolamine, Tetrasodium EDTA, Sodium Benzoate, Chlorphen- esin.



Salix Alba

EXFOLIATING FACE PEELING SERUM

Helps to equalise skin tone. Its AHA, BHA and rich plant extracts provide a more vivid, soft and smooth appearance. While renewing the skin, it helps to equalise the skin tone.



BENEFITS

GENTLE EXFOLIATION, BRIGHTER & EVEN SKIN TONE, DEEP HYDRATION, ANTIOXIDANT PROTECTION

HOW TO USE

AFTER YOU APPLY, LEAVE IT ON FOR 10 MINUTES, THEN RINSE WITH WATER.

USE 2-3 TIMES PER WEEK AT NIGHT. GRADUALLY INCREASE FREQUENCY AS SKIN TOLERATES.

INGREDIENTS

Aqua, Glycolic Acid, Lactic Acid, Citric Acid, Tartaric Acid, Malic Acid, Salicylic Acid, Panthenol, Glycerin, Tasmannia Lanceolata Fruit Extract, Pyrus Malus Fruit Extract, Daucus Carota Sativa Root Extract, Vitis Vinifera Leaf Extract, Citrus Medica Fruit Juice Extract, Beta Vulgaris Extract, Sodium Hyaluronate, Hydroxyethylcellulose, Polysorbate 20, Phenoxyethanol, Sodium Hydroxide, Tetrasodium EDTA, Ethylhexylglycerin, Sodium Benzoate, Potassium Sorbate, Allantoin, Urea.



Tasmannia Lanceolata



Pyrus Malus

REGENERATIVE AND PORE-MINIMIZING TONER

AHA and BHA group acids help cleanse and regenerate the skin.

It helps to reduce the appearance of dark spots and prevent the formation of blackheads.



BENEFITS

GENTLE EXFOLIATION, BRIGHTER & EVEN SKIN TONE, OIL CONTROL & CLARIFYING

HOW TO USE

SUITABLE FOR USE ON FACE - AVOIDING THE EYE AREA, NECK & DÉCOLLETÉ, BACK, AND LEGS, AS WELL AS OTHER BODY AREAS. USE 2-3 TIMES PER WEEK AT NIGHT. AVOID SUN EXPOSURE AFTER APPLICATION.

INGREDIENTS

Aqua, Salix Alba Bark Water, Isopropyl Alcohol, Glycolic Acid, Lactic Acid, Salicylic Acid, Citric Acid, Tartaric Acid, Malic Acid, Glycerin, Pyrus Malus Fruit Extract, Vitis Vinifera Leaf Extract, Aloe Barbadensis Leaf Juice, Zinc PCA, Chamomilla Recutita Flower Extract, Sodium Ascorbyl Phosphate, Phenoxyethanol, Panthenol, Allantoin, Polysorbate 80, Ethylhexylglycerin, Melaleuca Alternifolia Leaf Extract, Sodium Hyaluronate, Urea, Tetrasodium EDTA, Sodium Benzoate, Potassium Sorbate, Calcium Hydroxide.



Pyrus Malus



Aloe Barbadensis

REJUVENATING RETINOL (VIT A) SERUM

It is recommended for use in skin problems such as colour irregularities, aging and loss of elasticity.

It helps to prevent the formation of wrinkles on the skin and to remove existing wrinkles.



BENEFITS

DEEP HYDRATION, BRIGHTENING & EVEN SKIN TONE, ANTI-AGING & FIRMING, NOURISHING & REPAIRING, SOFT & SMOOTH TEXTURE

HOW TO USE

USE ONCE DAILY AT NIGHT. INTRODUCE GRADUALLY IF NEW TO RETINOL. AVOID DIRECT SUN EXPOSURE.

INGREDIENTS

Aqua, Niacinamide, Caprylic/Capric Triglyceride, Cetearyl Alcohol, Stearic Acid, Glyceryl Stearate, Dimethicone, Glycerin, PEG-40 Stearate, Sodium Hyaluronate, Sodium Hyaluronate Crosspolymer, Hydrolyzed Sodium Hyaluronate, Squalane, Cyclopentasiloxane, Zingiber Officinale Root Oil, Ceramide NP, Ceramide AP, Ceramide EOP, Lecithin, Silica, Phenoxethanol, Carbomer, Retinol, Pentylene Glycol, Xanthan gum, Butyrospermum Parkii Butter, Triethanolamine, Citric Acid, Ethylhexylglycerin.



Zingiber Officinale

PEPTIDE COMPLEX SERUM

Perfectly nourishes the skin, protects against environmental stress by helping to rebuild the skin.

It helps to moisturise, reduce the appearance of wrinkles and give a smooth appearance.



BENEFITS

FIRMING & ANTI-AGING, NOURISHING & STRENGTHENING, DEEP HYDRATION, BRIGHTENING & EVEN SKIN TONE, SKIN REPAIR & SOOTHING

HOW TO USE

SUITABLE FOR FACE AND NECK. USE MORNING AND NIGHT FOR BEST RESULTS.

INGREDIENTS

Aqua, Sodium Hyaluronate, Panthenol, Glycerin, Niacinamide, Collagen, Centella Asiatica Leaf Extract, Aloe Barbadensis Leaf Extract, Butylene Glycol, Heptapeptide-45, Phenoxyethanol, Polysorbate 20, Carbomer, Triethanolamine, Citric Acid, Xanthan gum, Sodium Hyaluronate Crosspolymer, Hydrolyzed Sodium Hyaluronate, Palmitoyl Oligopeptide, Acetyl Glutamine, sh-Oligopeptide-1, sh-Oligopeptide-2, sh-Polypeptide-1, sh-Polypeptide-9, sh-Polypeptide-11, Ethylhexylglycerin, Alanine, Lysine, Arginine.



Centella Asiatica



Aloe Barbadensis

BARRIER & SOOTHING SUPPORT SERUM (VIT B12)

Our Soothing & Barrier Support Serum is our first formulation specifically designed to protect, soothe, and hydrate your skin while keeping your skin barrier healthy. The B12 vitamin, hyaluronic acid, amino acids, vitamins, and botanical extracts in its composition help strengthen the skin barrier. It moisturizes the skin, providing a vibrant and radiant appearance.



BENEFITS

SOOTHING & CALMING
STRENGTHENING & REPAIRING
NOURISHING & SKIN BARRIER
SUPPORT, DEEP HYDRATION

HOW TO USE

SUITABLE FOR FACE AND NECK.
USE MORNING AND NIGHT FOR
BEST RESULTS.

INGREDIENTS

Aqua, Niacinamide, Panthenol, Butylene Glycol, Sodium Hyaluronate, Ceramide NP, Centella Asiatica Leaf Extract, Camellia Sinensis Leaf Extract, Hibiscus Sabdariffa Flower Extract, Beta Vulgaris Root Powder, PEG-7 Glyceryl Cocoate, Sodium PCA, Phenoxyethanol, Alanine, Arginine, Cysteine, Glycine, Histidine, Isoleucine, Leucine, Lysine, Methionine, Phenylalanine, Proline, Serine, Threonine, Tyrosine, Valine, 1,2-Hexanediol, Hydrolyzed Hyaluronic Acid, Hyaluronic Acid, Sodium Acetylated Hyaluronate, PEG-9 Diglycidyl Ether/Sodium Hyaluronate Crosspolymer, Hydroxypropyltrimonium Hyaluronate, Hydrolyzed Sodium Hyaluronate, Potassium Hyaluronate, Ethylhexylglycerin, Cyanocobalamin.



Camellia Sinensis



Beta Vulgaris



Centella Asiatica

ANTI-BLEMISH, HIGH PROTECTION DAILY FACE SUN CREAM

Water-resistant, broad-spectrum ultra UVA and UVB sunscreen; formulated with UV filters to protect the skin from the unwanted effects of the sun and rays that cause premature aging and has a moisturising and softening effect.



BENEFITS

BROAD-SPECTRUM SUN PROTECTION, DEEP HYDRATION & EVEN SKIN TONE, SOOTHING & SKIN BARRIER SUPPORT, ANTIOXIDANT & ANTI-AGING CARE

HOW TO USE

USE DAILY AS THE FINAL STEP IN YOUR SKINCARE ROUTINE. CAN BE USED UNDER MAKEUP OR ALONE.

INGREDIENTS

Aqua, Caprylic/Capric Triglyceride, Ethylhexyl Methoxycinnamate, C12-15 Alkyl Benzoate, Butyl Methoxydibenzoylmethane, Glycerin, Cyclopentasiloxane, PEG-100 Stearate, Niacinamide, Sodium Hyaluronate, Propylene Glycol, Panthenol, Octocrylene, Olea Europaea Fruit Oil, Avena Sativa Meal Extract, Prunus Amygdalus Dulcis Seed Extract, Pyrus Malus Fruit Extract, Centella Asiatica Leaf Extract, Glycyrrhiza Glabra Root Extract, Cinchona Succirubra Bark Extract, Butyrospermum Parkii Butter, Phenoxylethanol, Dimethicone, Xylitylglucoside, Anhydroxylitol, Xylitol, Allantoin, Tocopheryl Acetate, Ethylhexylglycerin, Hexapeptide-48 HCL, Disodium EDTA.



Centella Asiatica



Avena Sativa

ANTI-AGING BAKUCHIOL + HIBISCUS SERUM (RETINOL ALTERNATIVE)

Helps to balance skin tone inequalities and restore the elasticity and moisture lost by the skin over time. Supports the reduction of wrinkle appearance.

Suitable for sensitive skin and pregnant.

It is an alternative for skins that cannot use retinol.



BENEFITS

ANTI-AGING & FIRMING,
BRIGHTENING & EVEN SKIN TONE,
DEEP HYDRATION & MOISTURE
RETENTION, SOOTHING & SKIN
BARRIER SUPPORT
ANTIOXIDANT & NOURISHING CARE

HOW TO USE

SUITABLE FOR FACE AND NECK.
USE MORNING AND NIGHT FOR
BEST RESULTS.

INGREDIENTS

Aqua, Oryza Sativa Bran Water, Niacinamide, Glycerin, Butylene Glycol, Sodium Hyaluronate, Hibiscus Sabdariffa Flower Extract, Bakuchiol, Glycyrrhiza Glabra Root Extract, Persea Gratissima Oil, Persea Gratissima Fruit Extract, Oryza Sativa Bran Oil, Camellia Sinenis Leaf Extract, Inositol, Taurine, Betaine, Citrus Aurantium Tachibana Peel Extract, Passiflora Sulfuriflora Root Extract, Hydrolyzed Collagen, Phenoxylethanol, Hydroxyethylcellulose, Beta-Alanine, Polysorbate 20, Ethylhexylglycerin, Tetrasodium EDTA, Sodium Benzoate.



Hibiscus



Oryza Sativa

ANTI-BLEMISH PURIFYING CLEANSING GEL

Deeply cleanses dirt and oil that clogs the pores on the skin and causes acne and blackheads. Helps prevent the formation of blemishes on the skin thanks to active ingredients and plant extracts effective on blemished skin



BENEFITS

EFFECTIVE CLEANSING, BRIGHTENING & EVEN SKIN TONE, HYDRATION & MOISTURE BALANCE, SOOTHING & CALMING CARE, ANTIOXIDANT & SKIN BARRIER SUPPORT

HOW TO USE

USE MORNING AND NIGHT FOR BEST RESULTS. AVOID DIRECT CONTACT WITH EYES.

INGREDIENTS

Aqua, Lauryl Glucoside, Coco-Glucoside, Sodium Cocoyl Isethionate, Disodium Cocoamphodiacetate, Cocamidopropyl Betaine, Sodium Lauryl Glucose Carboxylate, Glycerin, Niacinamide, Glycolic Acid, Hamamelis Virginiana Leaf Extract, Hibiscus Sabdariffa Flower Extract, Centella Asiatica Leaf Extract, Arnica Montana Flower Extract, Chamomilla Recutita Flower Extract, Cucumis Sativus Fruit Extract, Aloe Barbadensis Leaf Extract, Glycyrrhiza Glabra (licorice) Stem Extract, Cinchona Succirubra Bark Extract, Propolis Extract, Hydrolyzed Algae Extract, Cystoseira Tamariscifolia Extract, Pancreaticum Maritimum Extract, Larix sibirica Wood Extract, Panthenol, Allantoin, Sodium Hyaluronate, Citric Acid, Phenoxethanol, Bisabolol, Tetrasodium EDTA, Ethylhexylglycerin.



Hibiscus



Centella Asiatica

GENTLE CLEANSING GEL

Deeply cleanses dirt and oil that clogs the pores on the skin. Thanks to its active ingredients and plant extracts, it helps to remove dead cells from the skin. It gives the skin a fresher, cleaner and healthier appearance.



BENEFITS

GENTLE & EFFECTIVE CLEANSING, MOISTURE BALANCE, SOOTHING & SKIN BARRIER SUPPORT, NOURISHING & REVITALIZING CARE

HOW TO USE

USE MORNING AND NIGHT FOR BEST RESULTS. AVOID DIRECT CONTACT WITH EYES.

INGREDIENTS

Aqua, Centella Asiatica Leaf Water, Lauryl Glucoside, Coco-Glucoside, Sodium Cocoyl Isethionate, Disodium Cocoamphodiacetate, Cocamidopropyl Betaine, Sodium Lauryl Glucose Carboxylate, Glycerin, Niacinamide, Allantoin, Panthenol, Sodium Hyaluronate, Sodium Hyaluronate Crosspolymer, Hydrolyzed Sodium Hyaluronate, Centella Asiatica Leaf Extract, Camellia Sinensis Leaf Extract, Krameria Triandra Root Extract, Crithmum Maritimum Extract, Hydrolyzed Algin, Hydrolyzed Glycosaminoglycans, Salicornia Herbacea Extract, Silica, Panax Ginseng Root Extract, Panax Ginseng Seed Oil, Phenoxyethanol, Tetrasodium EDTA, PEG-40 Hydrogenated Castor Oil, Madecassoside, Polysorbate 20, Ethylhexylglycerin.



Centella Asiatica



Camellia Sinensis

VITAMIN A-E-K SERUM

This skincare serum, containing Vitamins A, E, and D, offers a formulation with moisturizing, soothing, anti-aging, rejuvenating, and antioxidant effects for the skin. Retinol and hyaluronic acid focus on anti-aging and skin renewal effects, while ingredients like olive oil, soybean oil, and palm oil nourish and hydrate the skin. Additionally, Vitamin E and K2 strengthen the skin's defense system. It can enhance skin elasticity and reduce the appearance of fine lines and wrinkles. It is highly suitable for dry, normal, and mature skin types.



BENEFITS

ANTI-AGING & WRINKLE REDUCTION
DEEP HYDRATION, EVEN SKIN TONE &
BRIGHTENING, ANTIOXIDANT & SKIN
PROTECTION, FIRMING & ELASTICITY
BOOST

HOW TO USE

USE IN THE EVENING. START WITH
2-3 TIMES A WEEK AND
GRADUALLY INCREASE. AVOID
DIRECT SUNLIGHT & ALWAYS
WEAR SPF.

INGREDIENTS

Aqua, Caprylic/Capric Triglyceride, PEG-40
Hydrogenated Castor Oil, Olea Europaea Fruit
Oil, Glycine Soja (Soybean) Oil, Elaeis Guineensis
(Palm) Oil, Sodium Hyaluronate, Phenoxyethanol,
Retinol, Tocopherol, Menaquinone-7, Carbomer,
Pentylene Glycol, Triethanolamine,
Ethylhexylglycerin, Citric Acid.



Olea Europaea Fruit Oil



Castor Oil

GLOW BOOST CLEANSER TONER

This facial cleansing toner not only removes dirt and oil from the skin but also nourishes, moisturizes, soothes, and gives radiance.

Additionally, it enhances skin health with ingredients that have anti-aging, antioxidant, rejuvenating, and anti-inflammatory effects.

Ingredients like Vitamin C and niacin help even out the skin tone, while aloe vera, green tea extract, and chamomile extract soothe the skin. Retinol and hyaluronic acid support skin cell renewal and may reduce the appearance of fine lines. This toner has a formulation that is suitable for all skin types, keeping the skin moisturized, soothed, and healthy. It can be used before or after the facial cleansing gel.



BENEFITS

GENTLE & NON-DRYING CLEANSING
BRIGHTENING & EVEN SKIN TONE,
SOOTHING & CALMING EFFECT, SKIN
BARRIER SUPPORT & NOURISHMENT

HOW TO USE

USE DAILY, MORNING AND NIGHT.
SUITABLE FOR ALL SKIN TYPES.

INGREDIENTS

Aqua, Decyl Glucoside, Sodium Cocoyl Amino Acids, Glycerin, Pentylene Glycol, Potassium Azoxyl Diglycinate, Polyglyceryl-6 Caprylate/Caprate, Alpha-Glucan Oligosaccharide, Lecithin, Panthenol, Alcohol, Glycyrrhiza Glabra Root Extract, Allantoin, Propylene Glycol, Polyglyceryl-4 Laurate/Sebacate, Sodium Hydroxide, 4-Butylresorcinol, Sodium Chloride, Polysorbate 20, Ascorbyl Glucoside, Pantolactone, Sodium Cholate, Disodium EDTA, Phenoxylethanol, Aloe Barbadensis Leaf Juice, Betula Alba Leaf Extract, Chamomilla Recutita Extract, Equisetum Arvense Extract, Urtica Dioica Extract, Humulus Lupulus Extract, Arctium Lappa Root Extract, Salvia Officinalis Leaf Extract, Camellia Sinensis Extract, Lawsonia Inermis Extract, Panicum Millaceum Seed Extract, Niacin, Biotin, Citric Acid, Ethylhexylglycerin, Disodium Cocoamphodiacetate, Sodium Benzoate, Potassium Sorbate



Glycyrrhiza Glabra



Aloe Barbadensis

NOURISHING HAIR CARE MILK

The special formula ensures easy detangling of your hair while providing daily heat protection, keeping your hair shiny and healthy.

The delightful coconut scent can be used not only for care but also as an impressive hair perfume.

Developed with nature's gentle touch, this spray is ideal for elevating your hair care ritual to the next level.

Discover it now and enjoy the privilege of exceptional hair care!



BENEFITS

NOURISHES & STRENGTHENS
HAIR, HYDRATES & SOFTENS
STRANDS, HELPS REDUCE FRIZZ &
STATIC, ENHANCES NATURAL SHINE

HOW TO USE

SHAKE WELL BEFORE USE. SPRAY
EVENLY ONTO DAMP OR DRY HAIR,
FOCUSING ON MID-LENGTHS AND
ENDS. DO NOT RINSE. STYLE AS
DESIRED. SUITABLE FOR DAILY USE.

INGREDIENTS

Aqua, Cocos Nucifera Fruit Juice, Prunus
Amygdalus Dulcis Oil, Prunus Amygdalus Dulcis
Fruit Extract, Avena Sativa Kernel Extract,
Glycerol Stearate, PEG-100 Stearate, Cetearyl
Alcohol, C12-15 Alkane, Polyquaternium-6,
Vanilla Planifolia Fruit Extract, Cassia Senna Leaf
Extract, Salvia Officinalis Extract, Urtica Dioica
Extract, Camellia Sinensis Leaf Extract, Aesculus
Hippocastanum Extract, Senecio Serrulata Fruit
Extract, Propylene Glycol, Panthenol,
Niacinamide, Pyridoxine HCL, Phenoxethanol,
Zea Mays Starch, Polyglyceryl-4 Caprate,
Xanthan Gum, Tocopherol, Gluconolactone,
Calcium Gluconate, Biotin, Cetrimonium
Chloride, Polysorbate-20, Parfum,
Ethylhexylglycerin, Sodium Benzoate,
Potassium Sorbate.



Oat Milk



Almond Milk



Coconut Milk

Contact Us

 +90 541 154 15 44

 info@ludita.com.tr

 Maslak Mah. Taşyoncası Sk. Maslak 1453
T4-A / 73 SARIYER /ISTANBUL

 [luditaofficial](#)