



EDUCATIONAL
TOURS



EF STEM

STEM Discovery: London

From code breaking and criminal investigations to the cryptic creation of Stonehenge, London is a prime spot for problem solvers and inquiring minds. Your job on this tour? Ask a lot of questions.

Let STEM be your guide during your exploration of London. Learn about the role math can play in the world of code cracking. Practice your sleuthing skills during a CSI-inspired forensics workshop. And plant your feet on two different hemispheres at the Royal Observatory in Greenwich, with the English capital as your backdrop.

Explore a world built on STEM

Science, Technology, Engineering, and Math shape communities across the globe. Our STEM-focused tours showcase the value of diverse ways of thinking and building, while also highlighting the powerful universality of STEM subjects. At EF, we've spent over 50 years witnessing the power of educational travel, and we know how it can transform STEM learners. Each STEM tour challenges travelers to think critically, and helps students develop innovative solutions to global problems.

Discover the home of Greenwich Mean Time and stand on the historic Prime Meridian at the Royal Observatory.



What to expect on a STEM tour

EXPERIENTIAL LEARNING

Apply STEM principles by participating in project-based learning that goes well beyond theory.

INNOVATIVE LOCATIONS

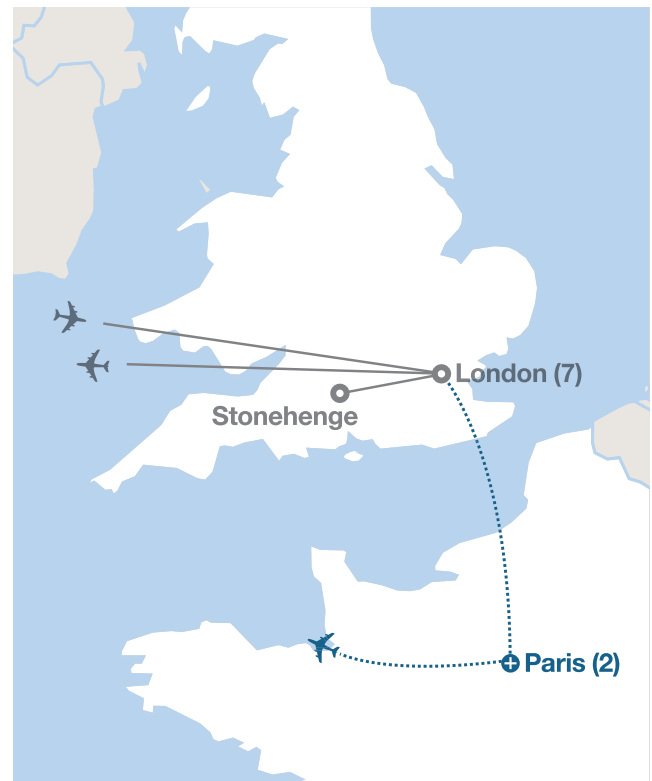
Tour exciting international destinations that host some of the world's most advanced laboratories, universities, and companies, or are simply perfect global "classrooms" to study analytical issues of the day in real life.

INDUSTRY EXPERTS

Collaborate and learn with scientists, engineers, researchers, and other STEM practitioners in the field.

YOUR EXPERIENCE INCLUDES

Full-time Tour Director; sightseeing tours; entrance fees for a roundtrip Thames River cruise, Science Museum, forensics workshop, London Eye, Stonehenge, Tower of London, theater show, Bletchley Park, National Museum of Computing, computer science and coding workshop, Royal Observatory; round-trip flights; 7 overnight stays in hotels (9 with extension); breakfast and dinner daily



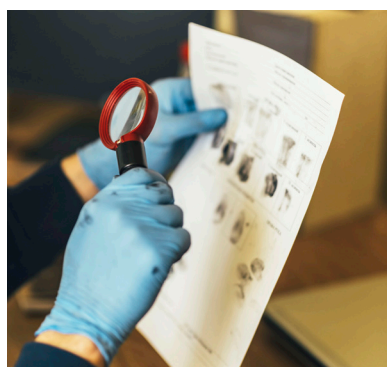
“I love when my students see the benefits of their discovery and creation—I think it is important for them to see others in that career.”

Victoria O., Science Department Chair



^

Take in views of Big Ben, London's world-famous clock, on a guided tour.



<

Become a detective for a day during an interactive forensics workshop.

Days 1–2: Fly to England

Fly overnight to London and meet your Tour Director at the airport. Then get acquainted with this spectacular city aboard a river cruise on the Thames.

Day 3: London

See St. Paul's Cathedral, Big Ben, and Buckingham Palace on an expert-led tour of England's capital. In the afternoon, visit a science museum.

Day 4: London

Today, channel the spirit of CSI while you explore forensic science. Learn criminal investigation skills—such as fingerprint analysis and crime scene assessment—during an interactive workshop. Then get your questions answered by local forensics experts. Tonight, follow in the footsteps of London's famous 19th-century serial killer, Jack the Ripper, on a walking tour.

Day 5: Stonehenge | London

Stonehenge's origin is an unsolved mystery. Your morning activity lets you create your own version of the famous circle as you learn about the challenges involved in moving and arranging the heavy stones. Then see the prehistoric landmark for yourself.

Day 6: London

Visit the Tower of London, a medieval castle and former prison, to hear the stories behind its stone facade. Then ride the London Eye, a large Ferris wheel along the river Thames that offers panoramic views of the city. Explore the city on your own before attending a theater performance.

Day 7: London

Visit Bletchley Park and the National Museum of Computing to learn about the role math can play in the world of secrets and spies, and how it affected the outcome of WWII. Then, apply your knowledge during an interactive computer science workshop.

Day 8: London

Enjoy a visit to the Royal Observatory in Greenwich and stand between hemispheres on the prime meridian line. Then, enjoy time to relax or explore more of London.

Days 9–11: Return home or add extension

Depart for home on Day 9 or extend your trip to Paris. On a guided tour, see the Place de la Concorde, the Arc de Triomphe, and the Eiffel Tower. Then, explore art from around the world at the Louvre.

The world leader in international education

For over 50 years, EF has been working toward one global mission: Opening the World Through Education. Your teacher has partnered with EF because of our unmatched worldwide presence, our focus on affordability, and our commitment to providing experiences that teach critical thinking, problem solving, collaboration, and global competence.

AFFORDABILITY

We always offer the guaranteed lowest prices so more students have the opportunity to travel and experience the world.

INSIGHT

We believe in experiential learning at the most important sites. Your Tour Director is with you at every step, providing their own perspective and local tips.

SAFETY

We're committed to your safety. With 500 schools and offices in over 50 countries, EF staff can react quickly and in person wherever you travel.

THE EASIEST WAYS TO ENROLL TODAY

Enroll online

eftours.com/enroll

Enroll by phone

800-665-5364

Mail your enrollment form

EF Educational Tours
Two Education Circle
Cambridge, MA 02141