



## Women Supporting Women



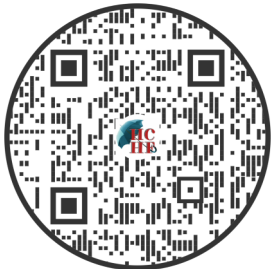
*Our mission is to be a group of caring individuals dedicated to the prevention and early detection of cancer in our community by facilitating and coordinating cancer-related programs, education, and fundraising activities.*

**Phone: 928 453 8190**

**Fax: 928 453 8236**

***Visit our website for more  
Services and Support!***

***[havasucommunityhealthfoundation.org](http://havasucommunityhealthfoundation.org)***



a program under the umbrella of

**HC Havasu Community  
HF Health Foundation**

A 501c3 public charity Tax I.D. 20-1839858

Shambles Village  
2126 McCulloch Blvd. N # 14  
Lake Havasu City, AZ 86403  
Phone 928-453-8190



**Havasu  
Community  
Health  
Foundation**

**QUESTIONS  
YOU MIGHT  
BE ASKING  
YOURSELF**



**Cancer Association of Havasu**

## What are screening tests?

These test are used to find a problem before you have a symptom.

### 3D vs. 2D mammograms

3D mammography appears to lower the chance of being called back after screening for follow-up testing. It also appears to find more breast cancers, and several studies have shown it can be helpful in women with more dense breasts.

It should be noted that 3D mammograms often cost more than 2D mammograms, and this added cost may not be covered by insurance. If you are going through the Cancer Association at the Havasu Community Health Foundation, there will be no additional cost for the 3D.

## What is a Breast Ultrasound?

Breast ultrasound uses sound waves and their echoes to make computer pictures of the inside of the breast. It can show certain breast changes, like fluid-filled cysts, that can be harder to see on mammograms.

## Who should get a Breast MRI?

Women who are at high risk for breast cancer based on certain factors.

If you have a lifetime risk of breast cancer—20% to 25% or greater, according to risk assessment tools that are based mainly on family history.

National Cancer Institute Risk Assessment Tool

<https://bcrisktool.cancer.gov>

MRI should be in addition to, not instead of, a screening mammogram.

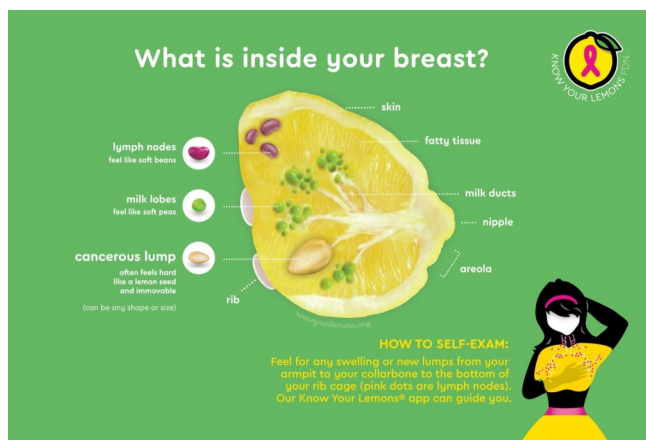
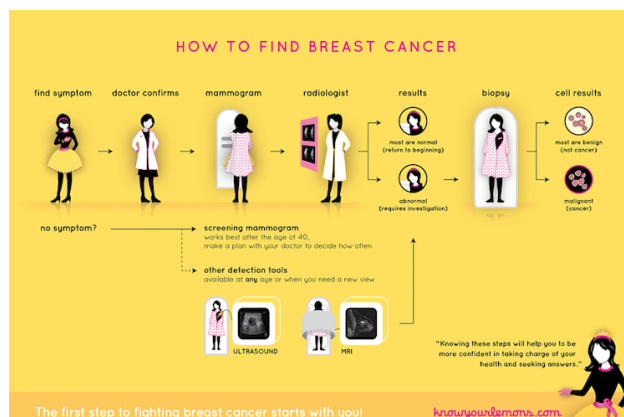
**Is funding available to me, if I don't have insurance or if my deductible is unreasonably high?**

**Yes,** The Cancer Association will pay for your 2D or 3D mammogram or Ultrasound. You will contribute only \$40 for each screening. The Cancer Association will pay for your screening through fundraisers that are held here in Lake Havasu.

Come by the Havasu Community Health Foundation with your Doctor's Order for any one of the three screenings and we will help you.

We are located at 2126 McCulloch Blvd. N. #14,  
Lake Havasu City, AZ 86403

**Thank You to "Know Your Lemons"**



## ◆ General Cancer

*support group*

*First Wednesday of the month  
2:30 PM*

## ◆ Bosom Buddies

*support group for breast cancer  
Second Wednesday of the month  
1:30 PM*

**"Support groups give you overwhelming validation that others have felt the way you now feel and survived."**

**There's No Place Like Hope**

## What we do...

### ◆ Low-Cost Screenings:

- ◆ CA-125
- ◆ PSA
- ◆ Mammograms
- ◆ Diagnostic Mammograms
- ◆ Breast Ultrasounds
- ◆ Low Dose Lung CT
- ◆ Oral Cancer Screening
- ◆ Colon Prep Kits

- ◆ Wigs, Hats, and Scarves provided to cancer patients
- ◆ Cancer Survivor support groups
- ◆ Hydrotherapy
- ◆ Individualized Counseling upon request and by appointment