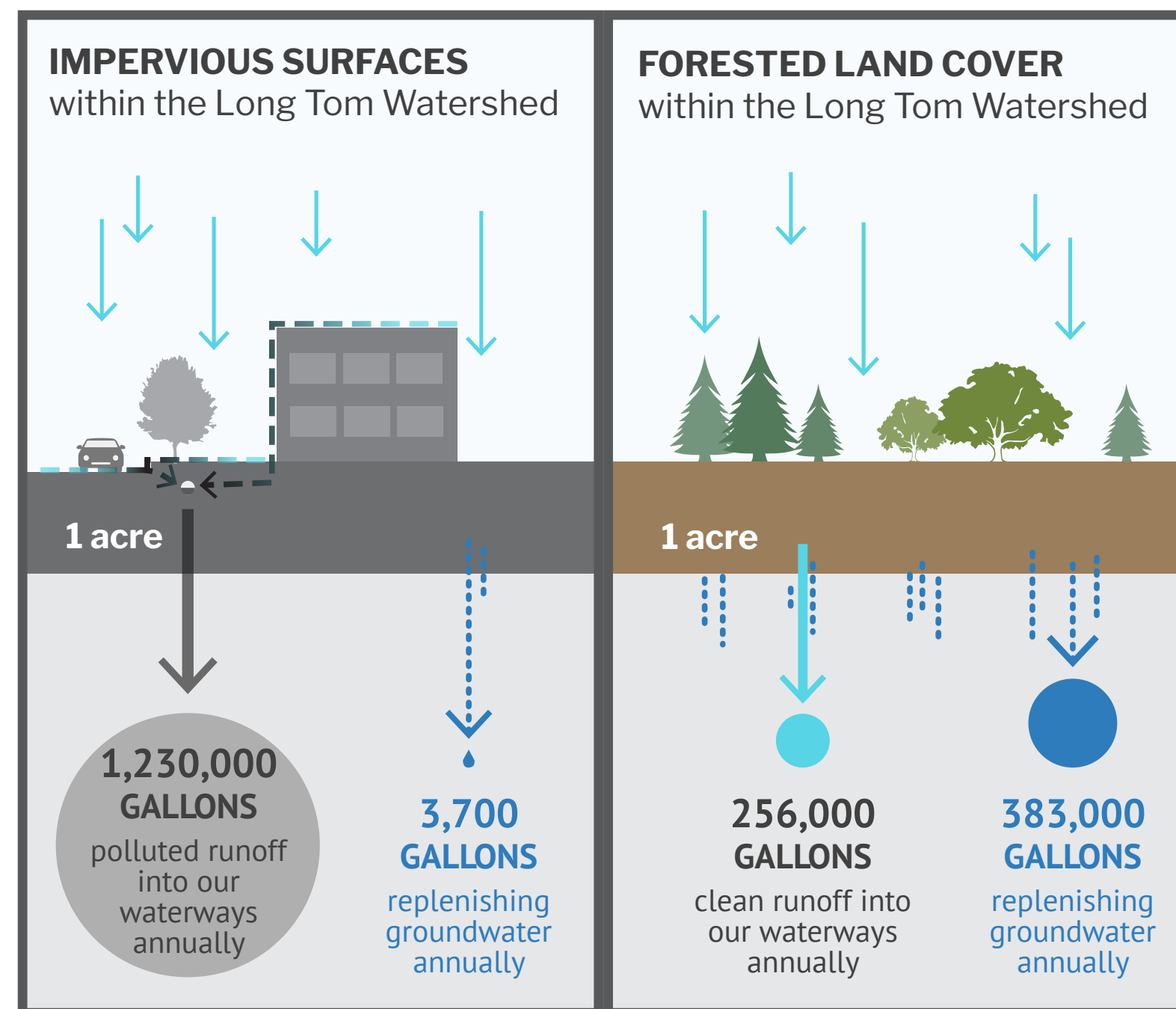


# How does this garden improve watershed health?

## URBAN AREAS IMPACT WATERWAYS

Our stormwater enters Amazon Creek or the Willamette River untreated—unless there's a rain garden



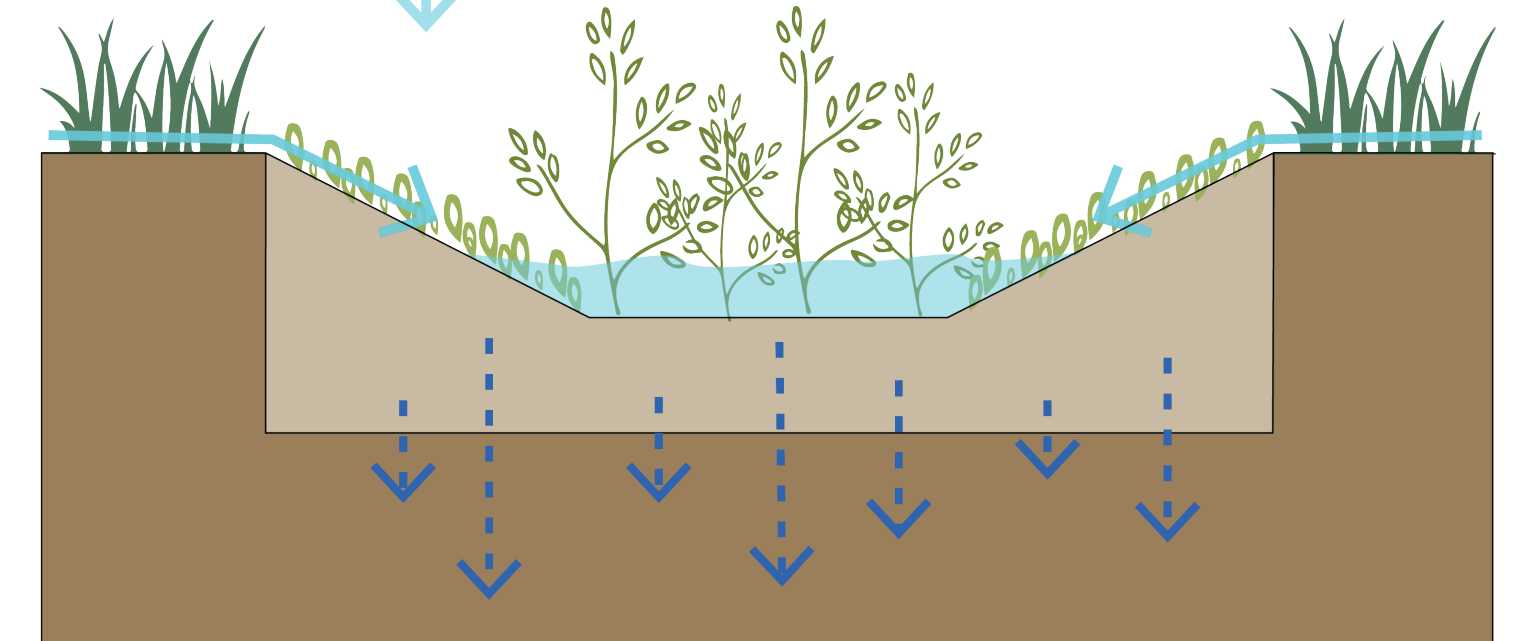
## IMPERVIOUS SURFACES:

- Concentrate pollutants
- Speed the rate of runoff
- Increase in-stream erosion
- Block rainfall from replenishing groundwater
- Increase temperature and volume of runoff

*Rain gardens are key to improving water quality*

## THIS RAIN GARDEN:

- Captures rainfall, surface runoff, and roof water
- Holds stormwater, providing flood resiliency
- Uses porous soils and specific plants to remove pollutants
- Provides pollinator and wildlife habitat
- Allows groundwater recharge



## What do rain gardens look like?



This business voluntarily chose to install a rain garden!



Learn more at:  
[Longtom.org](http://Longtom.org)  
[Happyrivers.org](http://Happyrivers.org)