

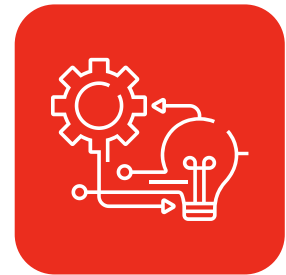


THE ECHO FRAMEWORK™



EYE FOR BUSINESS

The ECHO Framework™, by Eye For Business, provides a structured methodology for prompt engineering that aligns with established academic principles for effective AI interaction design. By systematically defining Expertise, Context, How-to instructions and Output specifications, the framework delivers measurably superior results compared to unstructured AI model queries—particularly for SMEs and mid-caps requiring business intelligence, compliance analysis and audit-ready documentation from Large Language Models including Co-Pilot, Perplexity, Anthropic, OpenAI and Google Gemini.



Expertise

Define role

Clearly specify the AI's role, subject matter expertise, relevant data sources, industry standards and regulatory frameworks to establish authoritative, contextually appropriate analysis parameters.

EXAMPLE: You are an [industry boundary] compliance analyst using [regulatory standard] and [data source] for audit-grade insights.

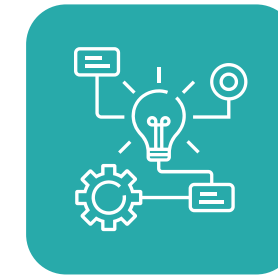


Context

Define situation

Clarify the business-focused background, regulatory or data limitations, timing constraints, geographical scope and specific industry circumstances to establish relevant analytical boundaries and operational parameters.

EXAMPLE: Analyse [specific business scenario] within [regulatory environment] considering [time constraint] and [geographical scope] limitations.



How

Define method

Establish step-by-step analytical procedures, including at least one controversial compliance angle, all benchmarked against accepted industry standards to ensure systematic, evidence-backed methodology for decision-grade outputs.

EXAMPLE: Apply [framework] methodology with [compliance consideration] benchmarked to [industry standard] for analysis.



Output

Define format

Specify strict formatting requirements, length parameters, UK English conventions, company and key concept emphasis through bold text, plus audit-trail documentation and citation standards for verification purposes.

EXAMPLE: Deliver [length specification] report in [format] in [UK English] and with audit-trail and [citation standard] references.