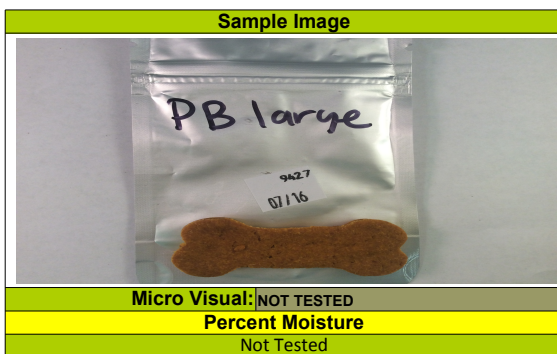
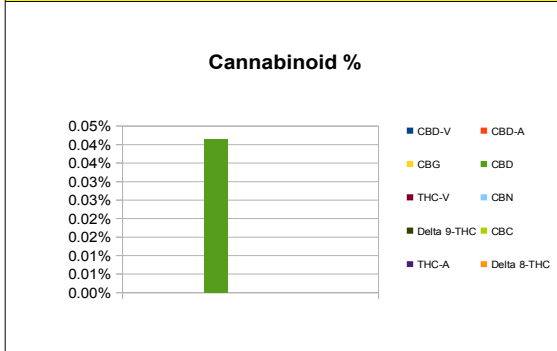
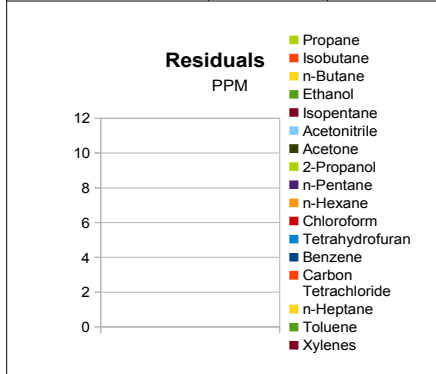


| Sample Information | | |
|------------------------|--------------------|------|
| Sample Identification | PB Large Dog treat | |
| Laboratory Number | 2018009427 | |
| Batch Number | NA | |
| Matrix | Medible | |
| Analyzed Date | 07/16/18 | |
| Extraction Date | 07/16/18 | |
| Cannabinoid (HPLC) | % | mg/g |
| Compound | | |
| CBD-V | 0.00% | 0.00 |
| CBD-A | 0.00% | 0.00 |
| CBG | 0.00% | 0.00 |
| CBD | 0.04% | 0.41 |
| THC-V | 0.00% | 0.00 |
| CBN | 0.00% | 0.00 |
| Delta 9-THC | 0.00% | 0.00 |
| CBC | 0.00% | 0.00 |
| THC-A | 0.00% | 0.00 |
| Delta 8-THC | 0.00% | 0.00 |
| Cannabinoids Total | | |
| Max Active THC | 0.00% | 0.00 |
| Max Active CBD | 0.04% | 0.41 |
| T. Active Cannabinoids | 0.04% | 0.41 |
| Total Cannabinoids | 0.04% | 0.41 |
| Max Active Ratios | | |
| NA :1 CBD to THC | | |
| 0.0 :1 THC to CBD | | |



| RS (GCMS-HS) Compound | PPM | RL |
|-----------------------|-----|------|
| Propane | NT | 5.0 |
| Isobutane | NT | 5.0 |
| n-Butane | NT | 5.0 |
| Ethanol | NT | 5.0 |
| Isopentane | NT | 5.0 |
| Acetonitrile | NT | 5.0 |
| Acetone | NT | 50.0 |
| 2-Propanol | NT | 5.0 |
| n-Pentane | NT | 5.0 |
| n-Hexane | NT | 5.0 |
| Chloroform | NT | 5.0 |
| Tetrahydrofuran | NT | 5.0 |
| Benzene | NT | 5.0 |
| Carbon Tetrachloride | NT | 5.0 |
| n-Heptane | NT | 5.0 |
| Toluene | NT | 5.0 |
| Xylenes | NT | 10.0 |



| | |
|--|------|
| g/medible | 6.25 |
| mg THC/medible | 0 |
| mg CBD/medible | 2.59 |
| (mg) total cannabinoids/medible | 2.59 |

| Metals Compound | PPM | RL |
|-----------------|-----|-------|
| Lead | NT | 0.010 |
| Arsenic | NT | 0.010 |
| Cadmium | NT | 0.010 |
| Mercury | NT | 0.001 |



RL=Reporting Limit
NA=Not Applicable
NT=Not Tested

| Terpene (GC-MS) Compound | % | mg/g |
|--------------------------------|----|------|
| alpha-Pinene | NT | NT |
| Camphene | NT | NT |
| Sabinene | NT | NT |
| beta-Myrcene | NT | NT |
| Beta-Pinene | NT | NT |
| p-mentha-1-5-diene | NT | NT |
| (1S)-(+)-3-Carene | NT | NT |
| Alpha-Terpinene | NT | NT |
| Ocimene Isomer 1 | NT | NT |
| (R)-(+)-Limonene | NT | NT |
| Ocimene Isomer2 | NT | NT |
| Eucalyptol (1,8-Cineole) | NT | NT |
| gamma-Terpinene | NT | NT |
| Sabinene Hydrate | NT | NT |
| Terpinolene | NT | NT |
| Linalool | NT | NT |
| (+)-Fenchone and L(-)-Fenchone | NT | NT |
| 1R)-Endo-(+)-Fenchyl | NT | NT |
| (-)-Isopulegol | NT | NT |
| Camphor | NT | NT |
| Isoborneol | NT | NT |
| Hexahydrothymol | NT | NT |
| (+)-Borneol and (-) Borneol | NT | NT |
| alpha-Terpineol | NT | NT |
| gamma-Terpineol | NT | NT |
| Nerol | NT | NT |
| Geraniol | NT | NT |
| (+) -Pulegone | NT | NT |
| Geranyl Acetate | NT | NT |
| alpha-Cedrene | NT | NT |
| trans-Caryophyllene | NT | NT |
| alpha-Humulene | NT | NT |
| Valencene | NT | NT |
| cis-Nerolidol | NT | NT |
| trans-Nerolidol | NT | NT |
| Guaiol | NT | NT |
| (-)-Caryophyllene Oxide | NT | NT |
| (+)-Cedrol | NT | NT |
| (-)-alpha-Bisabolol | NT | NT |
| Total Terpenes | NT | NT |

