

# Logic Puzzles Challenge

#1



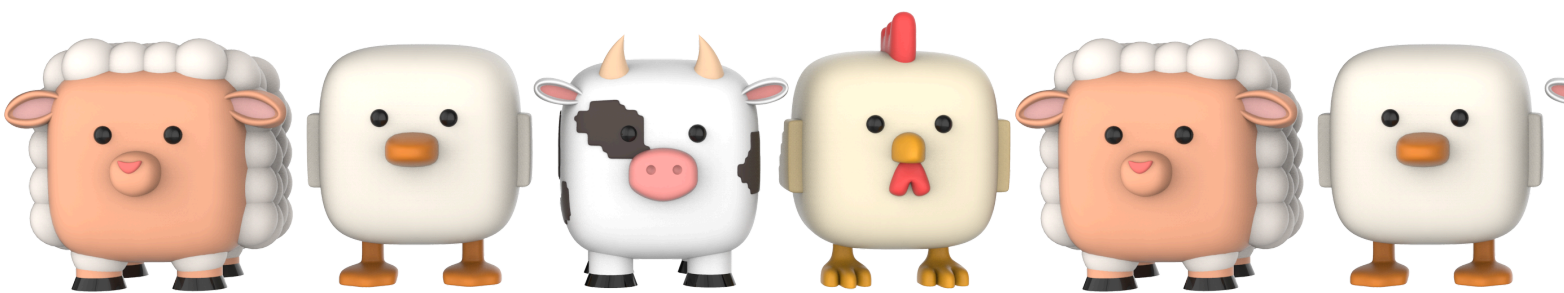
# The Farm Animal Puzzle

Puzzle: On Farmer John's farm, he has four types of animals: cows, chickens, ducks, and sheep. Each type of animal is kept in a different pen, and each pen is a different colour: red, blue, green, and yellow.

Here are some clues to help you figure out which animal is in which coloured pen:

1. The cows are not in the red pen.
2. The chickens are in the pen next to the green pen.
3. The ducks are in the blue pen.
4. The yellow pen is next to the pen with the cows.
5. The green pen is not next to the red pen.

Can you figure out which animal is in each coloured pen?



# The Farm Animal Puzzle



**Solution:**

Let's break down the clues:

1. The cows are not in the red pen.
2. The chickens are in the pen next to the green pen.
3. The ducks are in the blue pen.
4. The yellow pen is next to the pen with the cows.
5. The green pen is not next to the red pen.

Based on these clues, we can deduce:

1. Ducks are in the blue pen (clue 3).
2. Cows are not in the red pen and the yellow pen is next to the cows' pen (clues 1 and 4).
3. Since the green pen is not next to the red pen (clue 5), the green pen must be next to the yellow pen or the blue pen. But since ducks are already in the blue pen, the green pen must be next to the yellow pen.
4. The chickens are in the pen next to the green pen (clue 2), and since the green pen must be next to the yellow pen, chickens cannot be in the yellow pen, so they must be in the pen next to the green pen.
5. Now, since the yellow pen is next to the cows' pen and the green pen is also next to the yellow pen, the only place for the cows is the green pen.

So, the solution is:

- Cows are in the green pen.
- Chickens are in the yellow pen.
- Ducks are in the blue pen.
- Sheep are in the red pen.

Final Placement:

- Red Pen: Sheep
- Blue Pen: Ducks
- Green Pen: Cows
- Yellow Pen: Chickens

