




YOUR STAIR & RAILING CO.

FABRICATED RAILING DESIGNS



We offer complete custom iron fabrication services. We specialize in custom interior and exterior stair railing, wine room doors, and courtyard & entry gates. From old world elegance to sleek modern designs, our custom iron fabrication division can handle your project from start to finish.



YOUR STAIR & RAILING CO.

**Infill Options:** Choose your ideal design style.  
Infill is the distinguishing feature of the stair or railing and should be selected first.

**Style Options:** Choose your interior design style

OLD WORLD  
TRADITIONAL  
CRAFTSMAN  
TRANSITIONAL  
CONTEMPORARY  
MODERN  
INDUSTRIAL

**Specification Options:** Choose details

INFILL BAR AND TUBE STOCK  
RAIL PROFILE  
POST PROFILE AND CONFIGURATION  
FINISHES

**Checklist:** Finalize all options

Ready for estimation once all options are indicated and field take-off or architectural drawings have been provided.

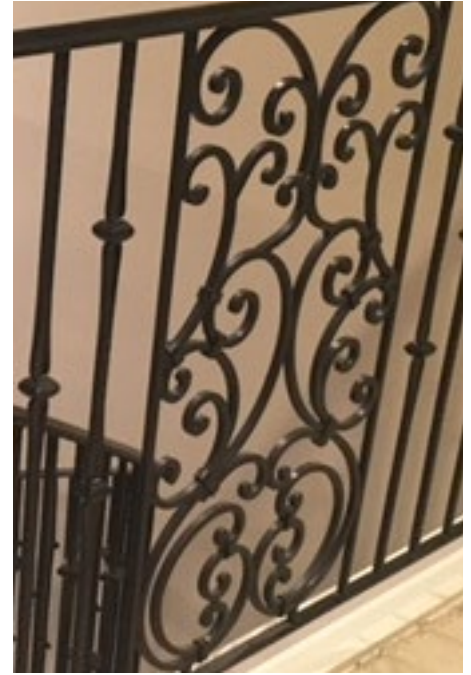
# INFILL OPTIONS



**BALUSTERS**



**BALUSTERS w/SCROLLS**



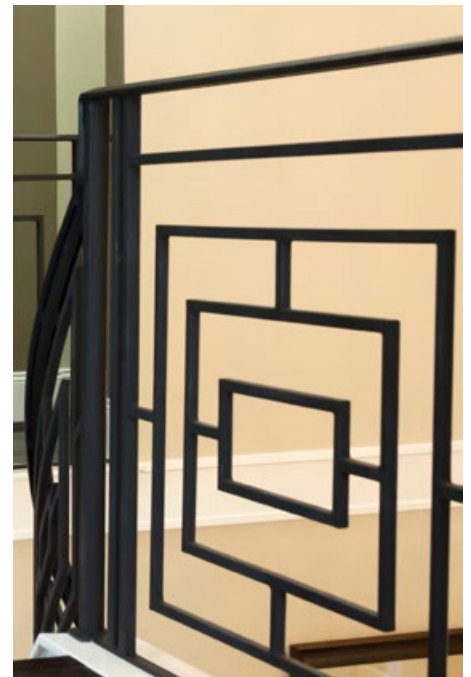
**BALUSTERS w/PANELS**



**PANELS**



**HORIZONTAL BAR**



**GEOMETRIC**



**SCROLLING**



**CABLE-HORIZONTAL**



**CABLE-VERTICAL**



**WIRE MESH**



**SCREEN**



**FLAME CUT**

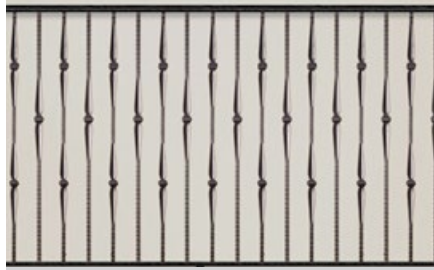
# OLD WORLD OPTIONS

LEVEL 1

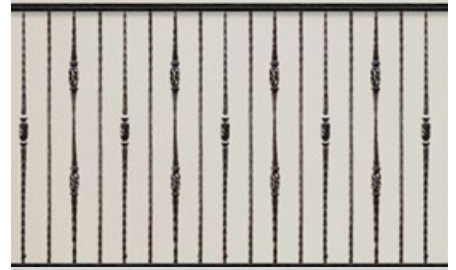
LEVEL 1 Default Options: 2-1/4" MCR handrail, Square ends, 1-1/2" Sq. posts, 1" flat stringer, Satin Black finish



**OLD WORLD 1A**  
9/16" Tuscan hammered plain bar  
HF2.9.20



**OLD WORLD 1B**  
9/16" Gothic plain hammered bar/  
knuckles HF16.5.2 , HF16.1.8



**OLD WORLD 1C**  
9/16" Tuscan Round forged bar/  
knuckle HF2.9.12, HF2.9.13, HF2.9.20

LEVEL 2

LEVEL 2 Default Options: 2-1/4" MCR handrail, Square ends, 1-1/2" Sq. posts, 1" flat stringer, Satin Black finish



**OLD WORLD 2A**  
1/2" Versatile Plain bar/knuckle w/ scrolls  
HF16.1.25, HF16.1.35



**OLD WORLD 2B**  
9/16" Tuscan hammered bar/knuckles  
w/ scrolls HF2.9.8, HF2.9.4



**OLD WORLD 2C**  
9/16" Tuscan Round forged plain bar/  
knuckles w/ scrolls HF2.1.9, HF2.1.8,  
HF2.1.11

LEVEL 3

LEVEL 3 Default Options: 2-1/4" MCR handrail, Square ends, 1-1/2" Sq. posts, 1" flat stringer, Satin Black finish



**OLD WORLD 3A**  
9/16" Gothic hammered plain bar/  
knuckle w/ Tuscan Panels HF16.5.2, HF16.1.8



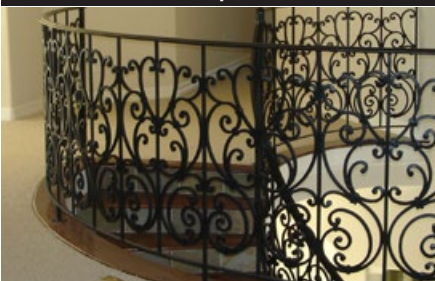
**OLD WORLD 3B**  
5/8" Monte Carlo rd. balusters w/  
Rebecca panels



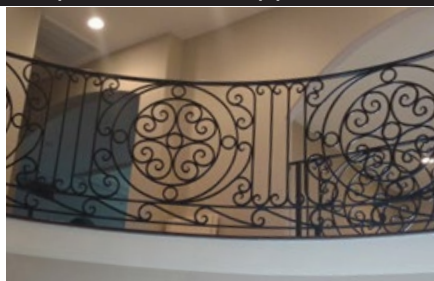
**OLD WORLD 3C**  
1/2" Square Seville Panels HFSE,C,D

LEVEL 4

LEVEL 4 Default Options: 2-1/4" MCR handrail, Square ends, 1-1/2" Sq. posts, 1" flat stringer, Satin Black finish



**OLD WORLD 4A**  
1/2" Tuscany square bar scrolling



**OLD WORLD 4B**  
1/2" square bar scrolling

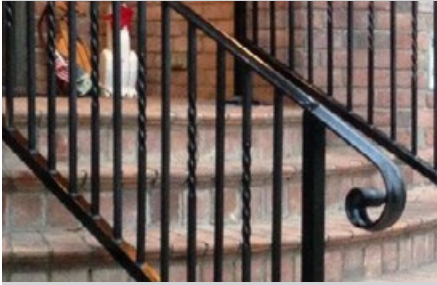


**OLD WORLD 4C**  
1/2" square bar scrolling

# TRADITIONAL OPTIONS

LEVEL 1 Default Options: 2-1/4" MCR handrail, Square ends, 1-1/2" Sq. posts, 1" flat stringer, Satin Black finish

LEVEL 1



**TRADITIONAL 1A**  
1/2" plain square HF16.2.1 bar w/twists  
HF16.1.1



**TRADITIONAL 1B**  
1/2" plain square bar w/ twists & baskets.  
HF16.1.3, HF16.1.4, HF16.1.21



**TRADITIONAL 1C**  
1/2" Versatile plain square bar w/knuckles.  
HF16.2.1, HF16.1.34, HF16.1.35

LEVEL 2 Default Options: 2-1/4" MCR handrail, Square ends, 1-1/2" Sq. posts, 1" flat stringer, Satin Black finish

LEVEL 2



**TRADITIONAL 2A**  
1/2" Plain square bar w/ ribbons  
HF16.1.10, HF16.1.6



**TRADITIONAL 2B**  
9/16" Round bar w/ feathers  
HF16.2.2, HF16.1.17



**TRADITIONAL 2C**  
9/16" Round bar w/ spooned knuckles  
HF2.8.18, HF2.11.4, HF2.11.16

LEVEL 3 Default Options: 2-1/4" MCR handrail, Square ends, 1-1/2" Sq. posts, 1" flat stringer, Satin Black finish

LEVEL 3



**TRADITIONAL 3A**  
1/2" Versatile plain square bar/baskets  
w/ subrail c-scrolls HF16.2.1, HF16.1.3



**TRADITIONAL 3B**  
1/2" Versatile plain square bar/knuckle  
w/ subrail s-scrolls HF16.1.35



**TRADITIONAL 3C**  
1/2" plain square bar/knuckle  
w/ subrail custom scrolls

LEVEL 4 Default Options: 2-1/4" MCR handrail, Square ends, 1-1/2" Sq. posts, 1" flat stringer, Satin Black finish

LEVEL 4



**TRADITIONAL 4A**  
9/16" Gothic square hammered bar  
scrolling HF16.1.8, HF16.5.2, 3/4" flat bar  
scrolls



**TRADITIONAL 4B**  
1/2" square bar scrolling



**TRADITIONAL 4C**  
1/2" square bar scrolling

# CRAFTSMAN OPTIONS

LEVEL 1 Default Options: 1"x 2" rectangular handrail, square end, 1-1/2" square posts, 1" flat stringer, Satin Black finish

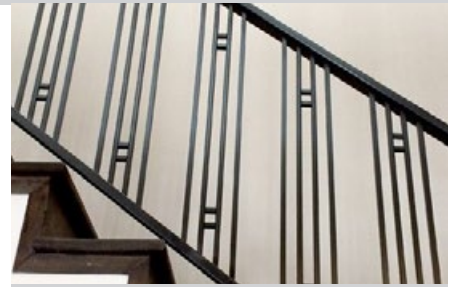
LEVEL 1



**CRAFTSMAN 1A**  
1" plain square tube



**CRAFTSMAN 1B**  
1" plain square tube



**CRAFTSMAN 1C**  
1/2" plain square double bar Aalto HF16.6.1

LEVEL 2 Default Options: 1"x 2" rectangular handrail, square end, 1-1/2" square posts, 1" flat stringer, Satin Black finish

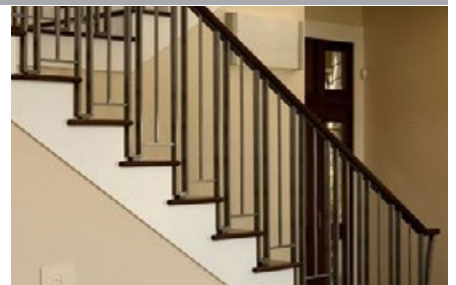
LEVEL 2



**CRAFTSMAN 2A**  
1/2" plain square bar with Aalto Circle panels



**CRAFTSMAN 2B**  
1/2" plain square bar with Aalto Rectangle panels



**CRAFTSMAN 2C**  
Grouped bars-triplets-quads - 1" and 1/2" square tube

LEVEL 3 Default Options: 1"x 2" rectangular handrail, square end, 1-1/2" square posts, 1" flat stringer, Satin Black finish

LEVEL 3



**CRAFTSMAN 3A**  
Geometric panels - 1" square tube



**CRAFTSMAN 3B**  
Geometric panels w/ subrail infill - 1/2" square tube



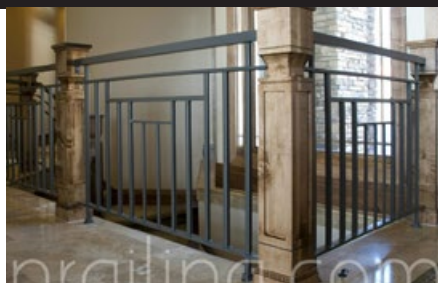
**CRAFTSMAN 3C**  
Geometric panels w/ subrail infill - 1/2" and 3/4" square tube

LEVEL 4 Default Options: 1"x 2" rectangular handrail, square end, 1-1/2" square posts, 1" flat stringer, Satin Black finish

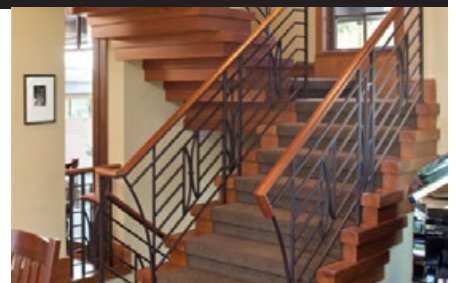
LEVEL 4



**CRAFTSMAN 4A**  
Geometric panels w/ subrail -bottom sub rail - 1" square tube w/ glass



**CRAFTSMAN 4B**  
Geometric panels w/ subrail -bottom sub rail - 3/4" square tube



**CRAFTSMAN 4C**  
Geometric panels w/ subrail -bottom sub rail - 1" square tube w/ 3/4" flat bar



# TRANSITIONAL OPTIONS

LEVEL 1 Default Options: 1"x 2" rectangular handrail, square end, 1-1/2" square posts, 1" flat stringer, Satin Black finish

LEVEL 1



**TRANSITIONAL 1A**  
1/2" plain square bar



**TRANSITIONAL 1B**  
5/8" plain round bars



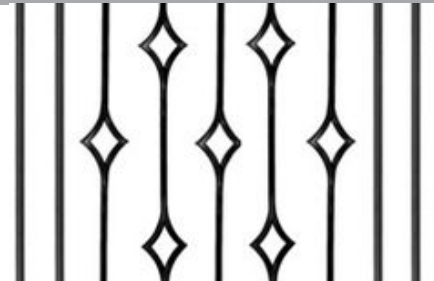
**TRANSITIONAL 1C**  
single knuckles and 1/2" plain bar  
HF16.1.34, HF16.2.1

LEVEL 2 Default Options: 1"x 2" rectangular handrail, square end, 1-1/2" square posts, 1" flat stringer, Satin Black finish

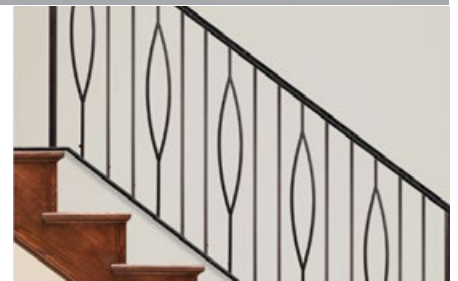
LEVEL 2



**TRANSITIONAL 2A**  
1/2" plain square bar with Aalto circles  
HF16.2.1, HF16.1.30, HF16.1.31



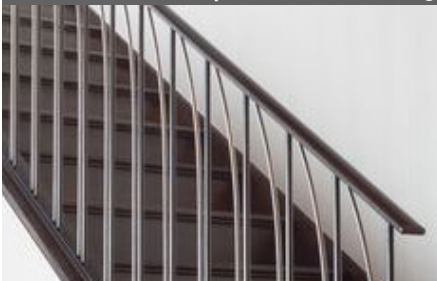
**TRANSITIONAL 2B**  
1/2" plain square bar with Aalto diamonds  
HF16.2.1, HF16.6.8, HF16.6.9



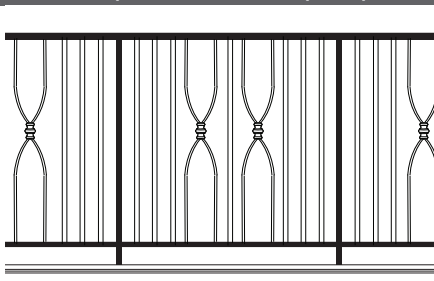
**TRANSITIONAL 2C**  
1/2" plain square bar with Aalto marquises  
HF16.2.1, HF16.6.7

LEVEL 3 Default Options: 1"x 2" rectangular handrail, square end, 1-1/2" square posts, 1" flat stringer, Satin Black finish

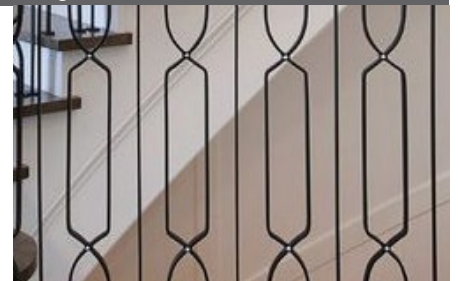
LEVEL 3



**TRANSITIONAL 3A**  
1/2" Plain square bar with geometric single shape



**TRANSITIONAL 3B**  
1/2" Plain square bar with geometric single shape



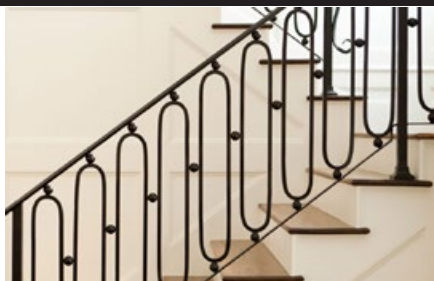
**TRANSITIONAL 3C**  
Plain bar with geometric single shape--  
subrail - 1/2" flat bar

LEVEL 4 Default Options: 1"x 2" rectangular handrail, square end, 1-1/2" square posts, 1" flat stringer, Satin Black finish

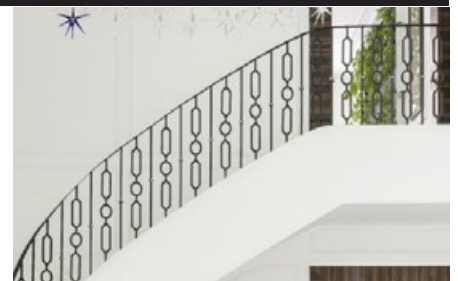
LEVEL 4



**TRANSITIONAL 4A**  
1/2" Plain square bar with concentric geometric single shape



**TRANSITIONAL 4B**  
1/2" Plain square bar with concentric geometric single shape and 1" flat subrail



**TRANSITIONAL 4C**  
1/2" Plain square bar with geometric single shape

# CONTEMPORARY OPTIONS

LEVEL 1 Default Options: 1"x 2" rectangular handrail, square end, 1-1/2" square posts, 1" flat stringer, Satin Black finish

LEVEL 1



**CONTEMPORARY 1A**  
1/2" Plain square bar triplet



**CONTEMPORARY 1B**  
1/2" Versatile plain square bar HF16.2.1, HF2.10.1



**CONTEMPORARY 1C**  
5/8" Plain round bar w/ spheres HF16.8.12, HF16.8.13

LEVEL 2 Default Options: 1"x 2" rectangular handrail, square end, 1-1/2" square posts, 1" flat stringer, Satin Black finish

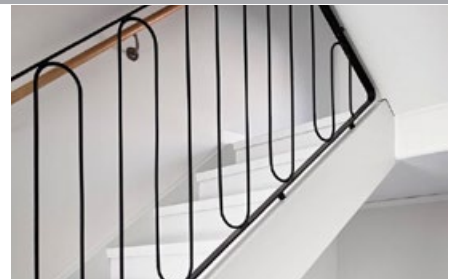
LEVEL 2



**CONTEMPORARY 2A**  
1/2" Plain square bar with simple geometric shape



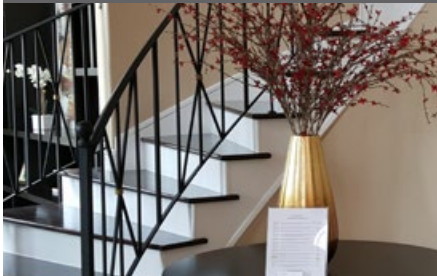
**CONTEMPORARY 2B**  
plain bar with simple Aalto round shapes HF16.2.1, HF16.6.2



**CONTEMPORARY 2C**  
Simple shapes-repeating-no plain bar - 3/8" round solid bar

LEVEL 3 Default Options: 1"x 2" rectangular handrail, square end, 1-1/2" square posts, 1" flat stringer, Satin Black finish

LEVEL 3



**CONTEMPORARY 3A**  
1" and 1/2" plain square bar with X shape



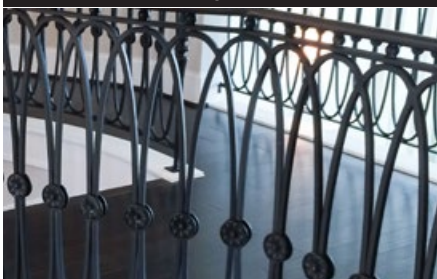
**CONTEMPORARY 3B**  
random geometric shapes - 1/2" square solid bar



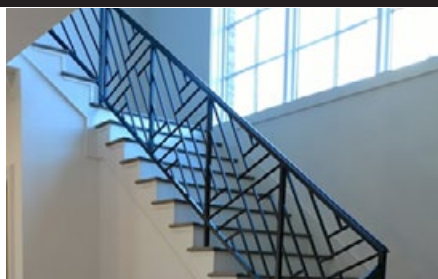
**CONTEMPORARY 3C**  
1/2" plain square bar - wavy

LEVEL 4 Default Options: 1"x 2" rectangular handrail, square end, 1-1/2" square posts, 1" flat stringer, Satin Black finish

LEVEL 4



**CONTEMPORARY 4A**  
1/2" plain square bar, concentric



**CONTEMPORARY 4B**  
1/2" plain square bar "cross hatch pattern"



**CONTEMPORARY 4C**  
1/2" plain square bar with "string" pattern

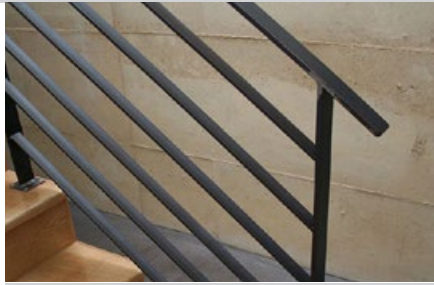
# MODERN OPTIONS

LEVEL 1 Default Options: 1" x 2" rectangular handrail, waterfall end, 1-1/2" square posts, 1" flat stringer, Satin Black finish

LEVEL 1



**MODERN 1A**  
1"x2" rectangle posts w/ 1/2" round bar



**MODERN 1B**  
1-1/2" square posts w/ 1" flat bar



**MODERN 1C**  
Vertical infill all 1" square tube

LEVEL 2 Default Options: 1" x 2" rectangular handrail, waterfall end, 1-1/2" square posts, 1" flat stringer, Satin Black finish

LEVEL 2



**MODERN 2A**  
Aalto Rectangles HF16.6.3



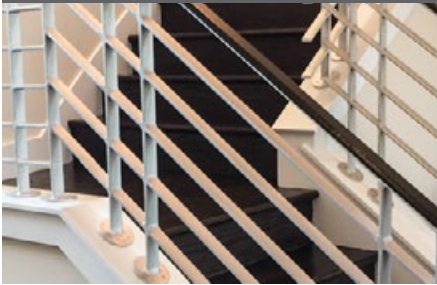
**MODERN 2B**  
1-1/2" square tube frame w/  
Red Oak wood slat infill



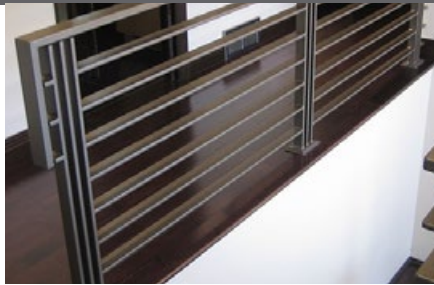
**MODERN 2C**  
1/2" Versatile plain square bar HF16.2.1  
and Aalto HF16.6.1

LEVEL 3 Default Options: 1" x 2" rectangular handrail, waterfall end, 1-1/2" square posts, 1" flat stringer, Satin Black finish

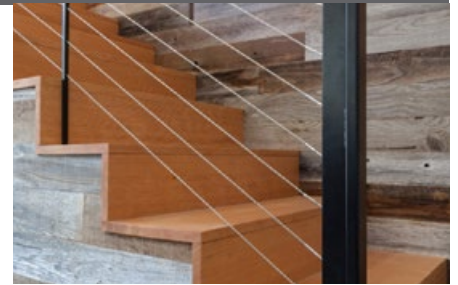
LEVEL 3



**MODERN 3A**  
1/4" x 2" Flat bar with double posts



**MODERN 3B**  
3/8" x 2" Flat bar with triple posts



**MODERN 3C**  
1" x 2" rectangular tube w/ 1/8" cable

LEVEL 4 Default Options: 1" x 2" rectangular handrail, waterfall end, 1-1/2" square posts, 1" flat stringer, Satin Black finish

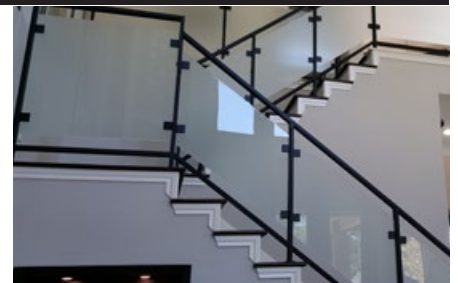
LEVEL 4



**MODERN 4A**  
3/4" square tube, geometric



**MODERN 4B**  
1/2" square tubing geometric panels



**MODERN 4C**  
3/8" glass infill w/ 1" x 2" rectangular  
tube

# INDUSTRIAL OPTIONS

LEVEL 1 Default Options: 1" x 2" rectangular handrail, square end, 2" square posts, 1" x 2" rectangular stringer, Satin Black finish

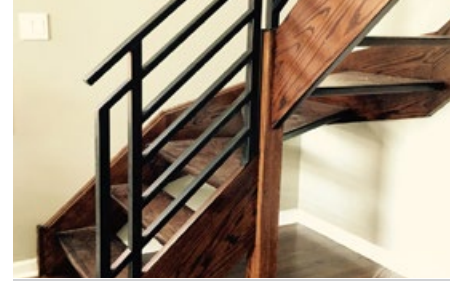
LEVEL 1



**INDUSTRIAL 1A**  
1-1/2" square tube posts, 3/4" square tube infill and 1" flat bar stringer



**INDUSTRIAL 1B**  
3/4" flat bar rail brackets and 1/2" square tube infill



**INDUSTRIAL 1C**  
1-1/2" square tube vertical and 1/2" x 1" tube horizontal

LEVEL 2 Default Options: 1" x 2" rectangular handrail, square end, 2" square posts, 1" x 2" rectangular stringer, Satin Black finish

LEVEL 2



**INDUSTRIAL 2A**  
Perforated mesh panel



**INDUSTRIAL 2B**  
Woven wire mesh



**INDUSTRIAL 2C**  
Perforated sheet stock

LEVEL 3 Default Options: 1" x 2" rectangular handrail, square end, 2" square posts, 1" x 2" rectangular stringer, Satin Black finish

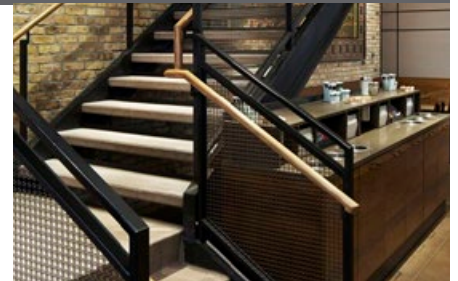
LEVEL 3



**INDUSTRIAL 3A**  
Woven wire mesh panels



**INDUSTRIAL 3B**  
Welded wire panels



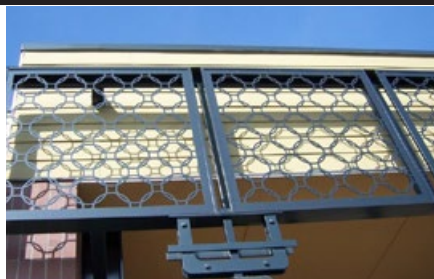
**INDUSTRIAL 3C**  
Woven wire mesh panels

LEVEL 4 Default Options: 1" x 2" rectangular handrail, square end, 2" square posts, 1" x 2" rectangular stringer, Satin Black finish

LEVEL 4



**INDUSTRIAL 4A**  
Flame cut 10 gauge sheet



**INDUSTRIAL 4B**  
Flame cut 10 gauge sheet



**INDUSTRIAL 4C**  
Flame cut 3/8" plate



# INFILL OPTIONS

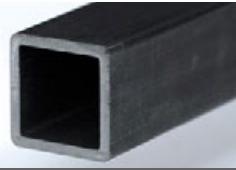
BAR STOCK



**FLAT BAR** - 1" X 1/4"  
**FLAT BAR** - 1-1/2" X 3/8"



**SQUARE BAR** - 1/2" X 1/2"  
**SQUARE BAR** - 9/16" X 9/16"  
**SQUARE BAR** - 5/8" X 5/8"



**SQUARE TUBE** - 5/8" X 5/8"  
**SQUARE TUBE** - 3/4" X 3/4"  
**SQUARE TUBE** - 1" X 1"  
**SQUARE TUBE** - 1-1/4" X 1-1/4"



**ROUND BAR** - 1/2" O.D.  
**ROUND BAR** - 9/16" O.D.  
**ROUND BAR** - 5/8" O.D.

BAR STOCK



**ROUND FORGED**



**SQUARE HAMMERED**



**SQUARE EDGE HAMMERED**



**SQUARE FACE HAMMERED**



**SQUARE RUSTIC HAMMERED**

Size

STAINLESS CABLE

AISI 316



**SS CABLE** - 1/8"

AISI 316



**SS CABLE** - 4 mm

GLASS



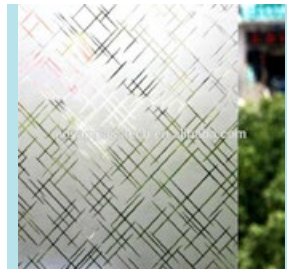
**CLEAR** - 1/4" Thickness  
**CLEAR** - 3/8" Thickness  
**CLEAR** - 1/2" Thickness



**OPAQUE** - 1/4" Thickness  
**OPAQUE** - 3/8" Thickness  
**OPAQUE** - 1/2" Thickness



**TEXTURED** - 1/4" Thickness  
**TEXTURED** - 3/8" Thickness  
**TEXTURED** - 1/2" Thickness

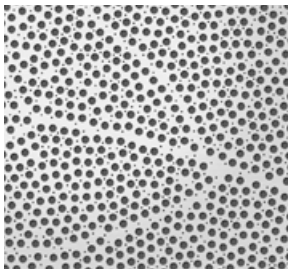


**ETCHED** - 1/4" Thickness  
**ETCHED** - 3/8" Thickness  
**ETCHED** - 1/2" Thickness

PANEL



**WOVEN WIRE**



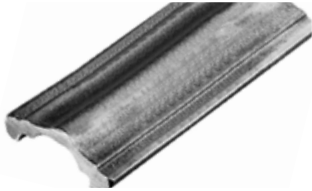
**PERFORATED** - 2-3/8" X 1/2"



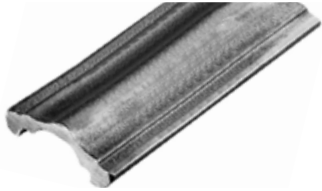
**LASER CUT** - 2-3/8" X 1/2"

# RAIL OPTIONS

TOP RAIL



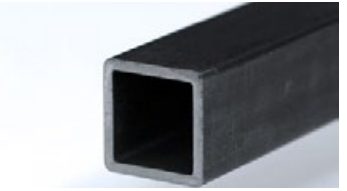
**MCR 1** - 2-3/8" X 1/2"  
LEVEL 1



**MCR 2** - 2-1/2" X 5/8"  
LEVEL 1



**FLAT BAR** - 1-1/2" X 1/2"  
**FLAT BAR** - 2" X 3/8"  
LEVEL 1



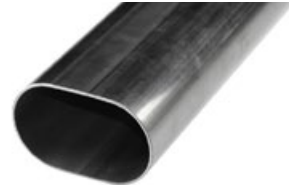
**SQUARE** - 1-1/2" X -1-1/2"  
**SQUARE** - 2" X 2"  
LEVEL 1



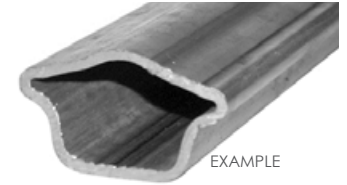
**FLAT TUBE** - 2-3/8" X 3/4"  
**FLAT TUBE** - 2-1/2" X 1"  
LEVEL 1



**ROUND** - 1-9/16" O.D.  
**ROUND** - 2" O.D.  
LEVEL 2



**OVAL** - 2-1/2" X 1-1/2"  
LEVEL 2



**SPECIAL**  
LEVEL 2/3/4



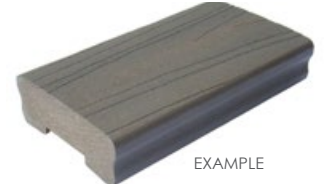
**6084** - 2-5/8" X 1-5/8"  
**SPECIES**  
LEVEL 3



**6002** - 2-3/4" x 1-5/8" - **6060** - 2" x 1"  
**SPECIES**  
LEVEL 3



**SPECIAL**  
LEVEL 3

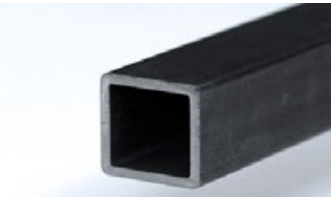


**SPECIAL**  
LEVEL 3/4

SUBRAIL - STRINGER



**FLAT BAR** - 1-1/2" X 1/2"  
**FLAT BAR** - 2" X 3/8"  
LEVEL 3



**SQUARE** - 1-1/2" X -1-1/2"  
**SQUARE** - 2" X 2"  
LEVEL 3



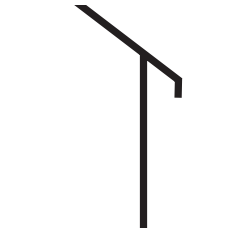
**FLAT TUBE** - 2-3/8" X 3/4"  
**FLAT TUBE** - 2-1/2" X 1"  
LEVEL 3



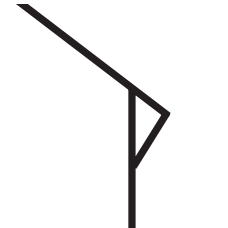
**POST TO POST**  
LEVEL 1



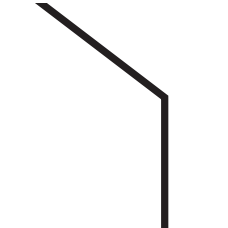
**END**  
LEVEL 1



**END TAB**  
LEVEL 1



**BACK INTO POST**  
LEVEL 1



**WATERFALL**  
LEVEL 1

START



**LAMB'S TONGUE 1**  
Height: 6-1/2"  
LEVEL 2



**LAMB'S TONGUE 2**  
Height: 10"  
LEVEL 2



**LAMB'S TONGUE 2**  
Height: 18"  
LEVEL 3/4



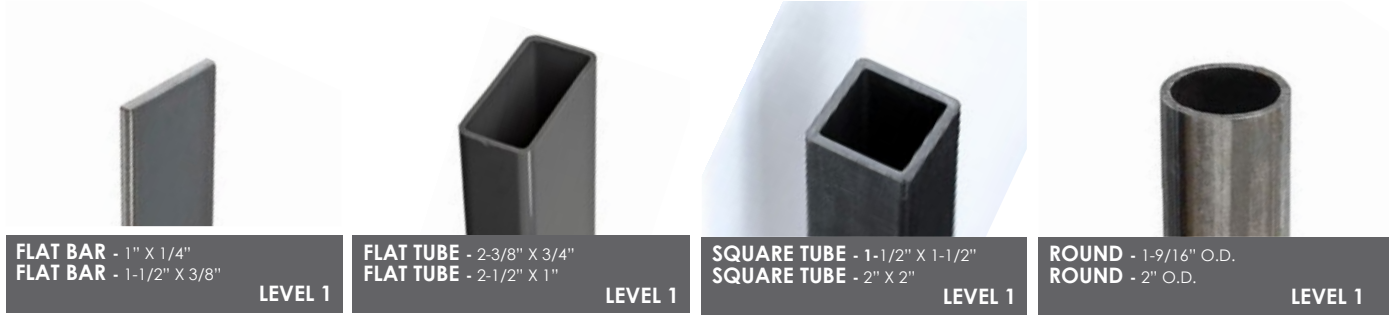
**CURL**  
LEVEL 3/4



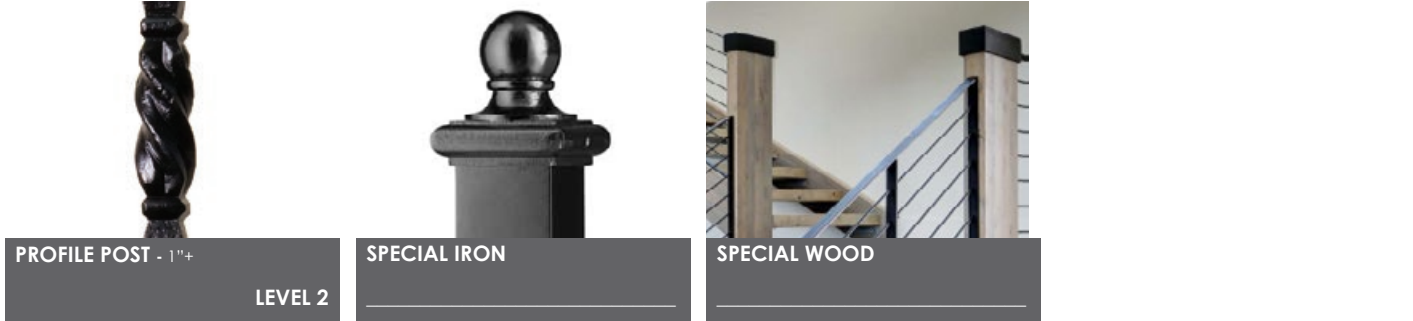
**VOLUTE**  
Width: 10-1/2"  
LEVEL 3/4

# POST OPTIONS

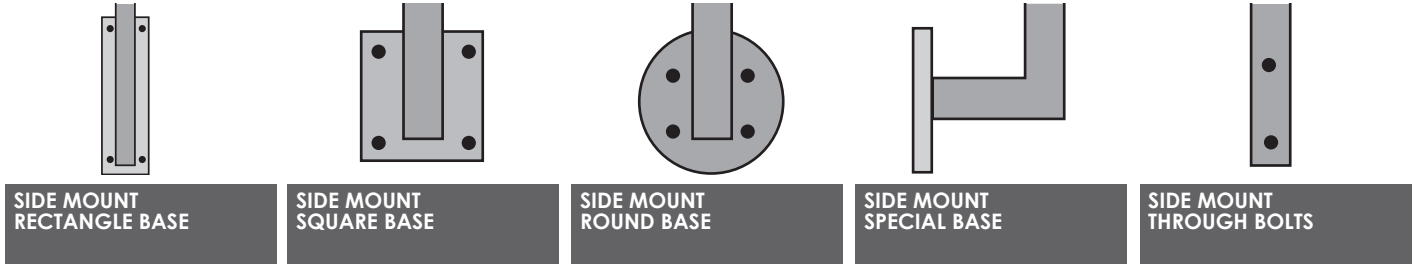
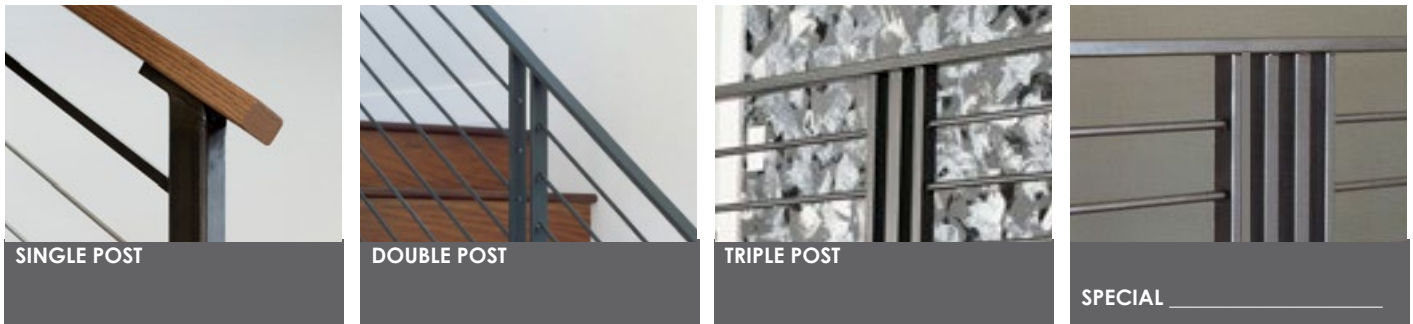
TYPE



CONFIGURATION



MOUNT/BASERAIL SUPPORT





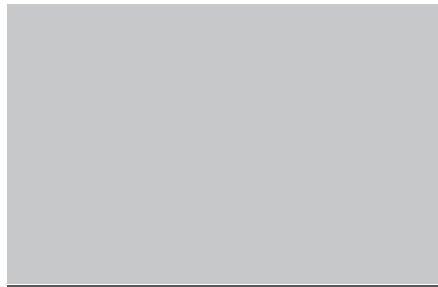
# FINISH OPTIONS



**BASE**

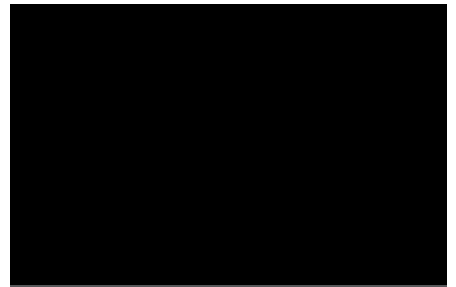
**RAW IRON**

Raw unfinished iron, must be primed, painted or powder coated for exterior



**PRIMED**

Automotive grade primer for interior/ exterior use. Must be painted



**INTERIOR PAINT**

Primer plus professional spray application



**INTERIOR FAUX PAINT**

Professional brushed or rubbed application



**INTERIOR POWDER COATING**

Ideal for maximum durability

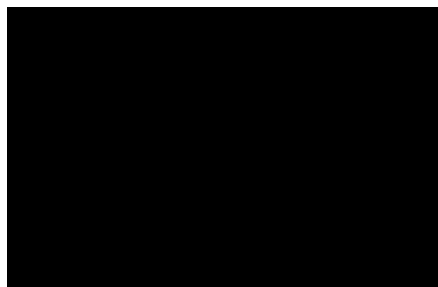


**INTERIOR POWDER COATING W/ FAUX PAINT**



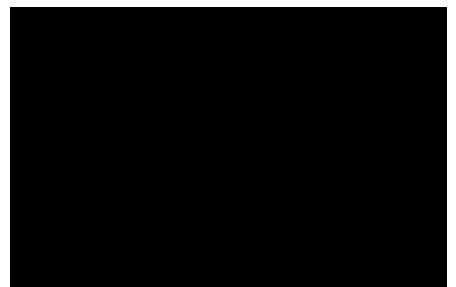
**EXTERIOR PAINT**

Primer plus professional spray application for exterior durability.



**EXTERIOR POWDER COATING**

Ideal for maximum durability



**CUSTOM FINISH:**

# CHECKLIST FORM

## Selection:

Notes:

INFILL	Bar stock	Cable	Glass	Panels
	Flat Bar 3/8" x 2"	1/8" 1x19	1/2" Clear	Woven
	Flat Bar 1/2" x 2-1/2"	1/4" 1x19	1/2" Opaque	1/2" Opaque
	Square Bar 1/2"	4mm 1x19	1/2" Textured	1/2" Textured
	Square Bar 9/16"		1/2" Etched	1/2" Etched
	Square Bar 5/8"			Special:
	Square Bar 3/4"			
	Square Bar 1"			
	Square Bar 1-1/4"			

RAIL	Top Rail	Rail Start	Subrail	Stringer
	MCR 1	Post to Post	Flat Bar 1	Flat Bar 1
	MCR 2	End	Flat Bar 2	Flat Bar 2
	Flat Bar 1	Tab	Flat Tube 1	Flat Tube 1
	Flat Bar 2	Quarter turn	Flat Tube 2	Flat Tube 2
	Flat Tube 1	Into Post	Square 1-1/4"	Square 1-1/4"
	Flat Tube 2	Waterfall	Square Bar 1-1/2"	Square Bar 1-1/2"
	Square 1-1/4"	Lambs T 1		
	Square Bar 1-1/2"	Lambs T 2		
	Round 1-1/2"	Lambs T 3		
	Oval	Curl 1		
	Special	Curl 2		
	Wood 1"x2"	Volute 1		
	Wood 6002			
	Wood 6084			
	Wood Special:			

POST	Type	Configuration	Supports	Mount	Base
	Flat Bar 1	Single	N/A	Top	Square
	Flat Bar 2	Double	Flat stem	Side	Rectangle
	Flat Tube 1	Triple	Square stem	Core	Round
	Flat Tube 2	Quad	Round Stem	Riser	Through Bolts
	Square Tube 1-1/2"	Special:			Special:
	Square Tube 2"				
	Round 1-9/16"				
	Round 1-9/16"				
	Special:				
	Wood:				

FINISHES	Paint	PC	Faux	Ext. Paint	Ext. PC
	Satin Black	Satin Black	ORB	Satin Black	Satin Black
	Ash Grey	Other:	ORC	Ash Grey	Ash Grey
	White		AN	White	White
			VB	Other:	Other:
			Other:		





YOUR STAIR & RAILING CO.

HOUSTON	P 281.209.0000	F 281.209.0067
AUSTIN	P 512.973.8373	F 512.973.9919
SAN ANTONIO	P 210.521.4808	F 210.521.7618
DALLAS	P 817.701.2006	F 817.701.2020

16684 Air Center Blvd. **Houston**, TX 77032  
8606 Wall St. Suite 200 **Austin**, TX 78754  
2520 N Great Southwest Pkwy.  
Suite 104 **Grand Prairie**, TX 75050

PARTS SALES - INSTALLATION - REMODEL  
CUSTOM IRON FABRICATION - CUSTOM WOOD COMPONENTS  
STAINLESS STEEL SYSTEMS - GLASS SYSTEMS - FLOATING SYSTEMS

VISIT OUR RETAIL STORE & SHOWROOM TODAY

[www.ironwoodusa.com](http://www.ironwoodusa.com)